

Pages 1 through 339 redacted for the following reasons:

-----

S. 12

S. 12 , 15

## **Considerations**

### **COST**

- C.1 Proximity to Courts to be served by OCC (exclusive of Carbon Footprint)
- C.2 Likelihood to Achieve 360 cells within Current Estimate
- C.3 Cost of Land Purchase/Lease
- C.4 Cost of Building (exclusive of site development costs)
- C.5 Impact on Annual Operating Costs (excluding cost of land)
- C.6 Site Development Costs and Restraints (need for special foundations, construction, drainage, relocations, and demolitions)
- C.7 Off-Site Development Costs (eg. road expansions, bridges, walkways, service line extensions)

### **ENVIRONMENTAL**

- E.1 Not in ALR
- E.2 Environmental Implications (Minimal Negative Impact on air, land, water conditions, including noise and light pollution)
- E.3 Not Within Environmentally Sensitive Area
- E.4 Green Building Opportunities and Ability to Achieve LEED Gold
- E.5 Carbon Footprint (Traffic Impact, Travel Distances for Staff, Services)

### **SCHEDULE**

- S.1 Schedule Impact (Exclusive of Time to Zone and Purchase; e.g. Site remediation, demolition, permits, and legal challenges)
- S.2 Timeliness of Zoning
- S.3 Timeliness of Purchase/Lease

## PROVINCIAL IMPLICATIONS

- P.1 Probable positive outcome of First Nations Strength of Claim Analysis
- P.2 Consistent with Capital Asset Management Plan

## MUNICIPAL IMPLICATIONS

- M.1 Likelihood of Appropriate Zoning including consideration for public acceptance
- M.2 Community Impact - Proximity to Schools/Education Facilities, Daycare Centres & Residential Areas
- M.3 Consistent with Community Plan (Municipal benefit)
- M.4 Financial Benefit to Municipality (grants/grants in lieu)
- M.5 Compatibility with Neighbours (Architectural, Functional)

## TECHNICAL

- T.1 Minimum Size - (Building footprint, public and staff parking)
- T.2 Site Configuration (including buildable area, ability to expand, allows flexible design)
- T.3 Geotechnical (including floodplains, soil bearing, drainage, terrain/slope conditions)
- T.4 Services to Site (power, water, septic, vehicular access, telephone/radio reception)
- T.5 Ability to Achieve Facility Design Criteria

## OPERATIONAL

- O.1 Availability of Secondary Access (highway closure, natural disaster, etc)
- O.2 Ability to Achieve Threat Perimeter Buffer
- O.3 Access to Major Arterial (Access for Staff and Services)
- O.4 Proximity to Emergency Services
- O.5 Availability of Professional Staff (Psych, Dental, Doctor, Nurse)

## Okanagan Correctional Centre

### Staffing Opportunities During Construction

#### Direct Jobs

- Approximately 500 jobs created during construction
- Based on BC Statistics for projects of this size
- To be provided through the private partner

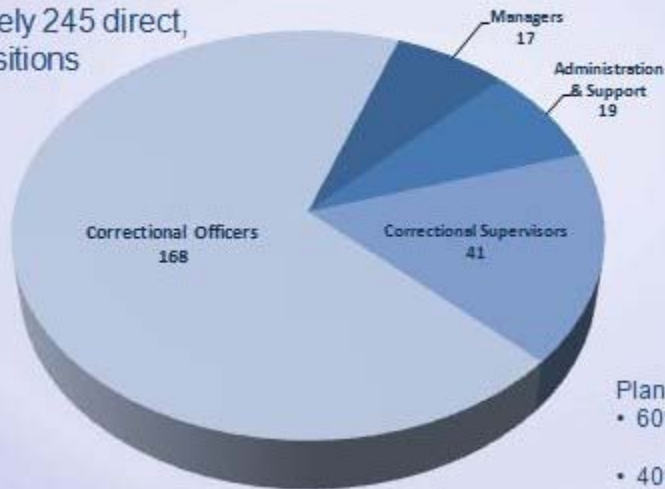
#### Examples

- general labour
- concrete
- electrical
- framing
- steel fabrication
- welding
- excavation
- masonry
- plumbing/pipe-fitting
- plumbing/pipe-fitting
- drywall
- flooring
- glazing
- millwork
- tile setting
- Insulation
- HVAC/ductwork
- roofing

## Okanagan Correctional Centre

### Estimated Staffing Opportunities - Corrections

Approximately 245 direct,  
full-time positions



Planning assumption:  
• 60% transferred from existing  
correctional centres  
• 40% new hires

## Okanagan Correctional Centre

### Estimated Staffing Opportunities - Contracted amounts subject to confirmation

60 to 65 contracted  
service provider positions



| Contractor Position Type                | Approx. Hourly Wage (excl. benefits) |
|---|--------------------------------------|
| Registered Nurse                        | \$35-37                              |
| Licensed Practical Nurse                | \$25-27                              |
| Pharmacy Technician                     | \$23-25                              |
| Medical Office Assistant/ Records Clerk | \$22-24                              |
| Food Services Cook                      | \$16-18                              |
| Food Services Helper                    | \$13-14                              |

Planning assumption: positions sourced primarily from within the region