

Ideal Cement Company
Limited

P.O. Box 160
Nanaimo British Columbia V0N 3K0
604 689-7627

APR 9 1987

IDEAL

April 7, 1987

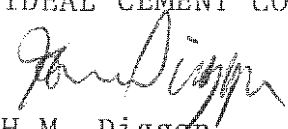
J.C. Errington, P.Ag.
Senior Reclamation Inspector
Ministry of Energy, Mines &
Petroleum Resources
Parliament Buildings,
Victoria, B.C. V8V 1X4

Dear Sir;

RE: ANNUAL REPORT OF RECLAMATION
PERMIT NO. 66
IDEAL CEMENT COMPANY LTD.
TEXADA ISLAND

Please find enclosed report in connection with Ideal Cement
Company Ltd. area covered by Permit No. 66.

Yours truly,
IDEAL CEMENT COMPANY LTD.


H.M. Diggon
Operations Manager

IDEAL CEMENT COMPANY LTD.

ANNUAL RECLAMATION REPORT

FOR

1986

AND

PROPOSED PROGRAMME FOR

1987

PERMIT NO. 66

APRIL 7, 1987

1.0 INTRODUCTION:

No underground work has been done on the permit area since our last report, however work was started on a limestone area to test a new customer. Waste material from the limestone operation covered by permit #15 is being crushed or shipped directly using existing facilities. The shore shiploading facilities are not currently being utilized.

2.0 MINING PROGRAM:

2.1 The limestone being quarried is a crystallized portion of the middle-lower member of the Triassic Marble Bay formation.

2.2 A 1 hectare area of immature natural re-growth was cleared and piled in preparation for burning. Five - eighty foot deep percussion holes were drilled to test quality. Approximately 100 cubic metres of overburden and limestone mixture was dozed into a stockpile for future use.

2.3 It is anticipated that approximately two hectares will be cleared in 1987 assuming customer acceptance of the product. 8,853 tonnes were shipped in 1986.

3.0 RECLAMATION PROGRAM:

The area is active. There is no reclamation department on site.

4.0 FUTURE RECLAMATION PROGRAM:

Stockpiling of overburden suitable for future reclamation will continue.

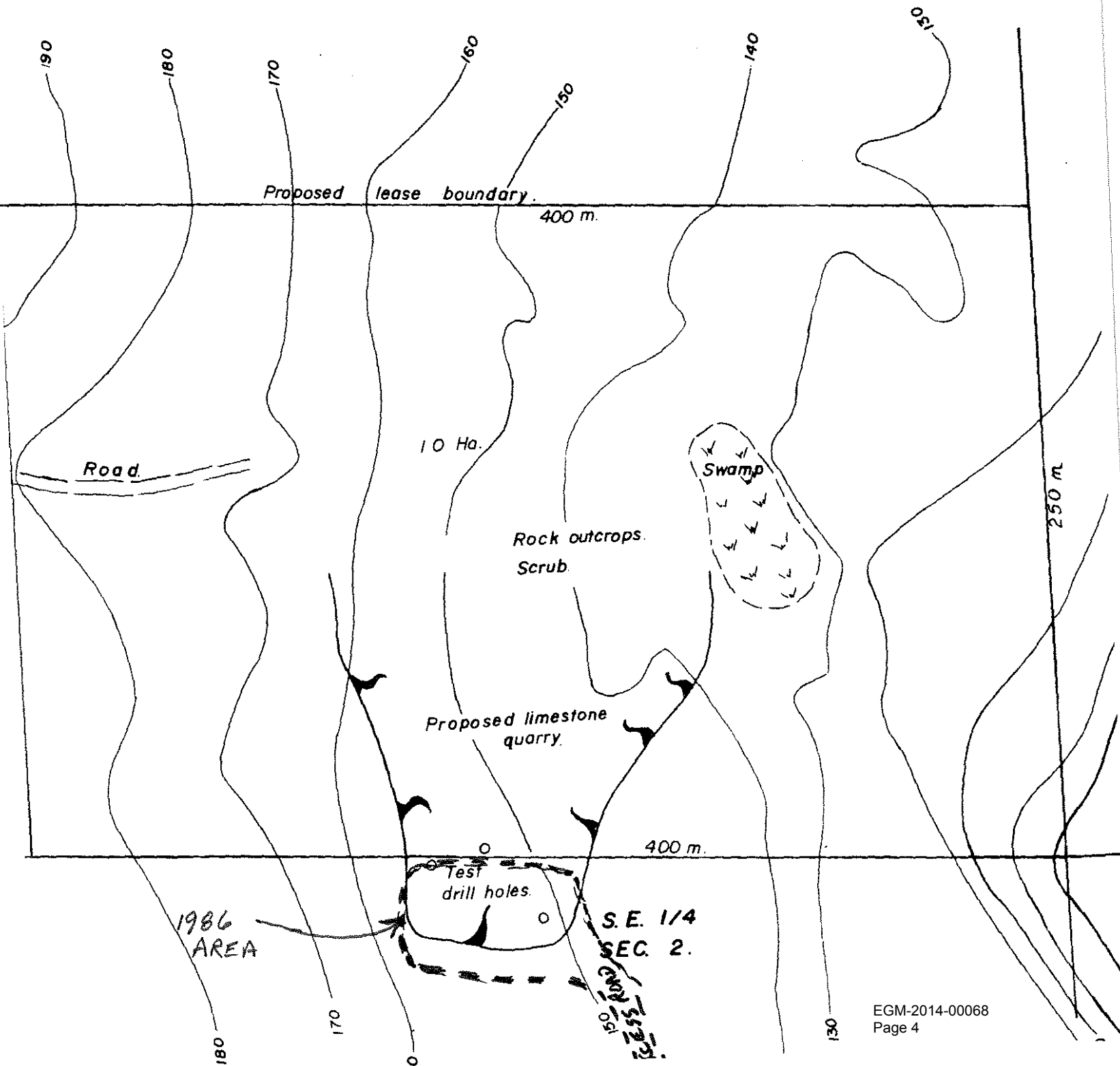
PLAN () PROPOSED QUARRY DEVELOPMENT
TO ACCOMPANY AN APPLICATION FOR A LEASE
OVER PART OF THE N.E. 1/4 SEC. 2. T.1.D.

SCALE = 1 : 2000



THIS PLAN LIES WITHIN THE POWELL RIVER REGIONAL DISTRICT.

N.E. 1/4 SEC. 2.



SUMMARY OF AREAS DISTURBED AND RECLAIMED TO DECEMBER 31, 1986

DISTURBANCE	MINING		RECLAMATION						
	AREA DISTURBED (ha)		AREA RECONTOURED (ha)		AREA SEEDED/PLANTED (ha)		AREA FERTILIZED (ha)		Area where vegetation has been established for one or more years. (ha)
	1986	TOTAL*	1986	TOTAL*	1986	TOTAL*	1986	TOTAL*	TOTAL
ROADS	2.1	2.1							
ADMINISTRATION									
PLANT SITE									
PIT AREA	.4	.4							
WASTE DUMPS									
TAILINGS PONDS									
STOCKPILES									
OTHER									
TOTAL									

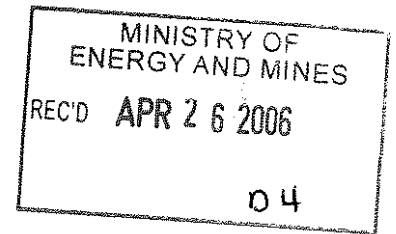
*Total up to December 31, 1986

OBJECTION OF ANTICIPATED MINING AND RECLAMATION

[illegible]

Texada
Quarrying Ltd.

Box 160
Van Anda, B.C. V0N 3K0
Ph: (604) 486-7627 Fx: (604) 486-7280



March 21, 2006

Ministry of Energy and Mines and Petroleum Resources
7th Floor - 1675 Douglas St.
PO Box 9320 Stn Prov Govt
Victoria, BC V8W 9N3

Attention: Diane Howe
Inspector of Mines, Reclamation

Dear Ms. Howe,

Re: Annual Reclamation Report – M-66

Please find herein for your review and approval the Annual Reclamation Report for Permit M-66.

We trust that this Plan is satisfactory. Should you have any questions, please do not hesitate to contact me.

Sincerely,
Texada Quarrying Ltd.

A handwritten signature in cursive script, appearing to read "Harold M. Diggon".

Harold M. Diggon
Manager

Attach.



Annual Reclamation Report for 2005

Company Name: Texada Quarrying Ltd.
Name of Property: Texada Aggregate Operation
Mines Act Permit Number: M-66
Date: January 3, 2006

ANNUAL RECLAMATION REPORT FOR 2005

TEXADA QUARRYING LTD.

TABLE OF CONTENTS

1.0	Introduction	1
2.0	Quarrying Program	1
2.1	Surface Development to Date	1
2.2	Surface Development for 2005	1
2.3	Surface Development for Next Five Years	2
3.0	Environmental Protection and Reclamation Program.....	2
3.1	Environmental Protection Program	2
3.2	Reclamation Program	2
4.0	Future Reclamation Programs	2
5.0	Reclamation Liability Cost Estimates.....	2

1.0 Introduction

The long-term reclamation objective is to provide one or more land use capabilities that will support land uses similar to, but not necessarily the same as, the land uses in existence before quarrying activities were commenced. Land use capabilities under consideration could include associated and or other industrial activity over a period of hundreds of years. It is important to recognize that a Closure Plan was filed in 1977 and subsequently approved by the Ministry of Mines.

A Five Year Mine Plan for Permit M-66 has been submitted.

2.0 Quarrying Program

2.1 Surface Development to Date

The quarry and its required operating areas have disturbed approximately 10 ha (approx. 25 acres) as of December 31, 2005. See **Appendix A1 and A2** for details.

- Material for the quarry is recycled from the old dumps from the open pit mine, augmented by drilling and blasting the solid rock material underneath the dump.
- The quarry has been developed in a series of benches, resulting in a terraced landscape. After blasting, the material is loaded on quarry trucks using front end loaders for transport to the aggregate crushing plant.
- The main quarry and operating areas do not intercept any defined watercourses on Texada Island.

2.2 Surface Development for 2005

Up to and including 2005, 2 ha (approx. 5 acres) were recycled for use in quarry activities and operations. Total quarry production during 2005 resulted in

approximately 200,000 tonnes of aggregate product for sale and shipment. See **Appendix A1 and A2** for details.

2.3 Surface Development for Next Five Years

Anticipated expansion of the quarry over the next five years, based on current rates of production, should require developing of approximately 5 ha (approx. 12.5 acres). Quarry expansion should continue at about 1 ha (approx. 2.5 acres) per year given current markets and operating conditions. See. **Appendix A1 and A2** for details.

3.0 Environmental Protection and Reclamation Program

3.1 Environmental Protection Program

TQL is conducting a water sampling and monitoring program for Permit M-66. The ARD & Sediment Control Annual Report for Permit M-66 was submitted to the BC Ministry of Energy and Mines in December of 2005.

3.2 Reclamation Program

TQL has submitted a Five Year Mine Plan for Permit M-66 for review and approval by BC Ministry of Energy and Mines. TQL is in the process of commissioning an aerial photograph for the site.

4.0 Future Reclamation Programs

Based on the dynamic nature of the operation, progressive reclamation strategies are not appropriate for this site. The quarry and all areas associated with its operations remain active and are projected to remain active for hundreds of years. As a result, the reclamation program is general in nature and is focused on an industrial next use.

5.0 Reclamation Liability Cost Estimates

See Appendix B for total estimate of outstanding reclamation liabilities.

SUMMARY OF AREAS DISTURBED AND RECLAIMED TO DECEMBER 31, 2005 (Appendix A1)

COMPANY: Texada Quarrying Ltd.

PERMIT NO. M-66

DISTURBANCE	MINING		RECLAMATION								
	AREA DISTURBED (ha)		AREA RECONTOURED (ha)		AREA SEEDED/PLANTED (ha)		AREA FERTILIZED (ha)		AREA REVEGETATED* (ha)		LAND USE OBJECTIVE**
	2005	TOTAL***	2005	TOTAL***	2005	TOTAL***	2005	TOTAL***	2005	TOTAL***	
WASTE DUMPS	n/a	n/a	0	0	0	0	0	0	0	0	n/a
TAILINGS PONDS	n/a	n/a	0	0	0	0	0	0	0	0	n/a
PLANT SITE	0	0	0	0	0	0	0	0	0	0	
ROADS	0	0	0	0	0	0	0	0	0	0	
ADMINISTRATION	0	0	0	0	0	0	0	0	0	0	
PIT AREAS	10.0	10.0	0	0	0	0	0	0	0	0	
STOCKPILES	0	0	0	0	0	0	0	0	0	0	
LINEAR (pipelines, powerlines, etc.)	0	0	0	0	0	0	0	0	0	0	
OTHER	0	0	0	0	0	0	0	0	0	0	n/a
TOTAL	10.0	10.0	0	0	0	0	0	0	0	0	

* In order for an area to be recorded as “revegetated” it must have supported vegetation that will lead to the designated land use objective for at least one year.

** Specify land use. Options include: forestry, grazing, wildlife habitat, recreation, agricultural, industrial, residential, and other.

*** Total up to December 31, 2005.

FIVE YEAR PROJECTION OF ANTICIPATED MINING AND RECLAMATION (Appendix A2)

COMPANY: Texada Quarrying Ltd

PERMIT NO.: M-66

	MINING						RECLAMATION																	
	AREA DISTURBED (ha)						AREA RECONTOURED (ha)						AREA SEEDED/PLANTED (ha)						AREA FERTILIZED (ha)					
YEAR	2006	07	08	09	10	Total	06	07	08	09	10	Total	06	07	08	09	10	Total	06	07	08	09	10	Total
WASTE DUMPS	n/a	n/a	n/a	n/a	n/a	n/a	n/a	n/a	n/a	n/a	n/a	n/a	n/a	n/a	n/a	n/a	n/a	n/a	n/a	n/a	n/a	n/a	n/a	n/a
TAILINGS PONDS	n/a	n/a	n/a	n/a	n/a	n/a	n/a	n/a	n/a	n/a	n/a	n/a	n/a	n/a	n/a	n/a	n/a	n/a	n/a	n/a	n/a	n/a	n/a	n/a
PLANT SITE	0	0	0	0	0	0	0	0	0	0	0	0	0	0	0	0	0	0	0	0	0	0	0	0
ROADS	0	0	0	0	0	0	0	0	0	0	0	0	0	0	0	0	0	0	0	0	0	0	0	0
ADMINISTRATION	0	0	0	0	0	0	0	0	0	0	0	0	0	0	0	0	0	0	0	0	0	0	0	0
PIT AREAS	11	1	1	1	1	15	0	0	0	0	0	0	0	0	0	0	0	0	0	0	0	0	0	0
STOCKPILES	0	0	0	0	0	0	0	0	0	0	0	0	0	0	0	0	0	0	0	0	0	0	0	0
LINEAR (pipelines, powerlines, etc.)	0	0	0	0	0	0	0	0	0	0	0	0	0	0	0	0	0	0	0	0	0	0	0	0
OTHER	0	0	0	0	0	0	0	0	0	0	0	0	0	0	0	0	0	0	0	0	0	0	0	0
TOTAL	11	1	1	1	1	15	0	0	0	0	0	0	0	0	0	0	0	0	0	0	0	0	0	0

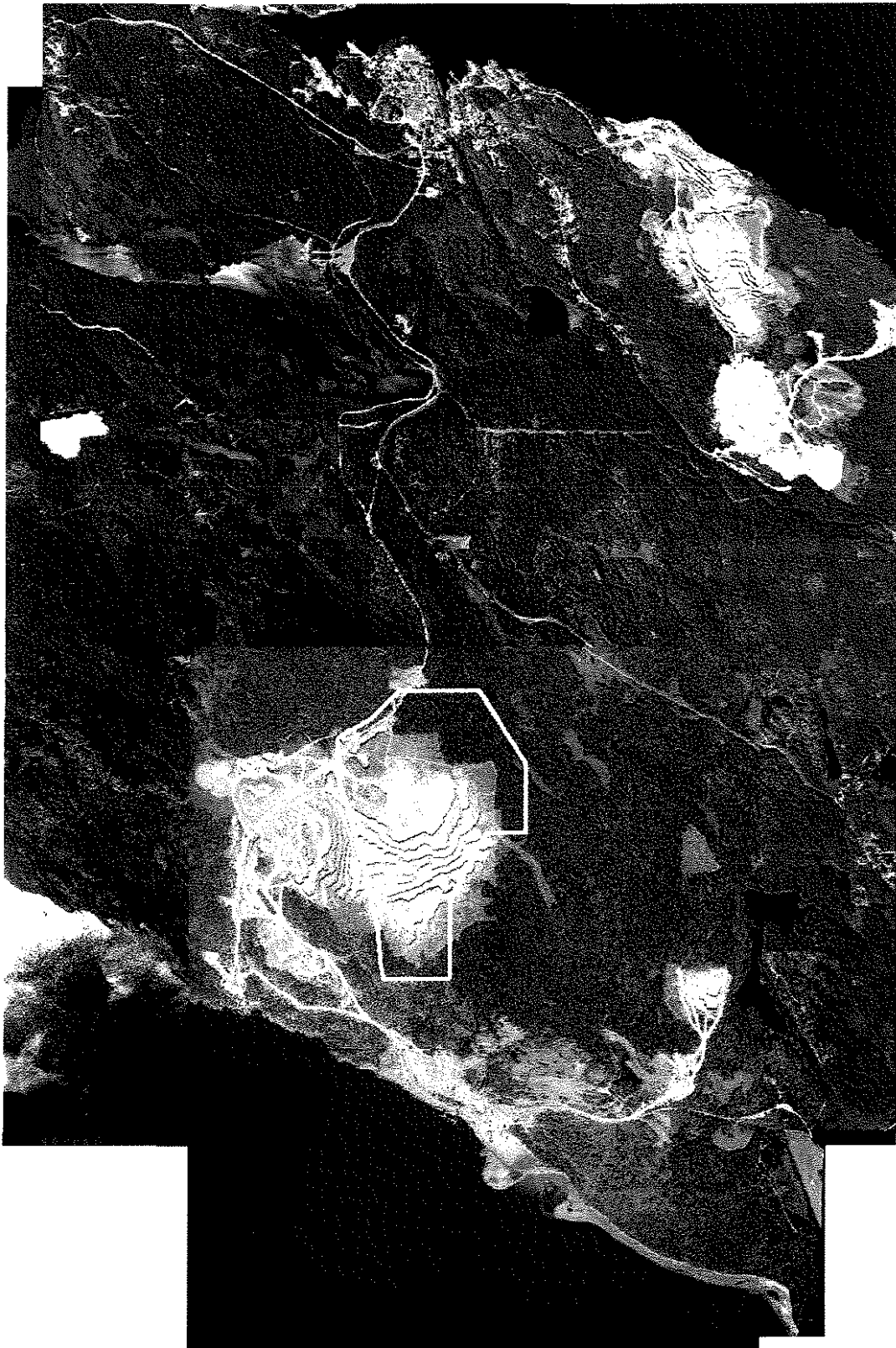
5yr Projection

Appendix B

Project Name:	TQL Texada Aggregate Operation
Permit #:	M-66
Costing Year:	2005

Mine Activity Category	AREA (ha)				RECLAMATION PRESCRIPTION			Total Cost
	Total Disturbed	Perm. Disturb.	Current Reclaimed	To be Reclaimed	Site Preparation	Revegetation	Maintenance	
AREA DISTURBANCE	10	10	0	10				
Dump Face Resloping								
Resloping	10	10	0	10	\$22,000	\$11,000	\$6,000	\$39,000
Master 1				0	\$0	\$0	\$0	\$0
Master 2				0	\$0	\$0	\$0	\$0
Master 3				0	\$0	\$0	\$0	\$0
Master 4				0	\$0	\$0	\$0	\$0
Master 5				0	\$0	\$0	\$0	\$0
Master 6				0	\$0	\$0	\$0	\$0
Master 7				0	\$0	\$0	\$0	\$0
Master 8				0	\$0	\$0	\$0	\$0
Master 9				0	\$0	\$0	\$0	\$0
Master 10				0	\$0	\$0	\$0	\$0
Master 11				0	\$0	\$0	\$0	\$0
Master 12				0	\$0	\$0	\$0	\$0
Master 13				0	\$0	\$0	\$0	\$0
Master 14				0	\$0	\$0	\$0	\$0
TOTAL	10.00	10.00	0.00	10.00	\$22,000	\$11,000	\$6,000	\$39,000
LUMP SUM ITEMS								
ARD Capital Costs								\$0
Mill Building								\$0
Admin. Building								\$0
Mill								\$0
Silos								\$0

Structures	\$0
Power line	\$0
Conveyor	\$0
Stockpiles	\$0
Sealing of Openings	\$0
Hauling--Surface Materials	\$0
Optional Item 1	\$0
Optional Item 2	\$0
Optional Item 3	\$0
Optional Item 4	\$0
Optional Item 5	\$0
Optional Item 6	\$0
Optional Item 7	\$0
POST CLOSURE COSTS	\$0
Present Value	\$0
TOTAL	\$39,000




N



0 0.5 1

CONFIDENTIAL - FOR LAFARGE USE ONLY

 LAFARGE NORTH AMERICA	
Lafarge Surface Tenures Texada Island, BC	
DATE: 2014-06-07 BY: FMA LOWE CHECK: BOWEN REVISION: 3 SCALE: 1:25,000	Projection: UTM Zone 12N Datum: NAD 83
Drawing: TEX-16	

EGM-2014-00068
Page 16

April 15, 2008

Ministry of Energy and Mines and Petroleum Resources
7th Floor - 1675 Douglas St.
PO Box 9320 Stn Prov Govt
Victoria, BC V8W 9N3

Attention: Diane Howe
Senior Reclamation Scientist

Dear Ms. Howe,

Re: Annual Reclamation Report – M-66

Please find herein for your review and approval the Annual Reclamation Report for Permit M-66.

We trust that this Plan is satisfactory. Should you have any questions, please do not hesitate to contact me.

Sincerely,
Texada Quarrying Ltd.



Rolly Thorpe, P.Eng
Quarry Development Manager

Attach.



Annual Reclamation Report for 2006 and 2007

Company Name: Texada Quarrying Ltd.
Name of Property: Texada Aggregate Operation
Mines Act Permit Number: M-66
Date: April 15, 2008

ANNUAL RECLAMATION REPORT FOR 2006 AND 2007 TEXADA QUARRYING LTD.

TABLE OF CONTENTS

1.0	Introduction.....	1
2.0	Quarrying Program.....	1
2.1	Surface Development to Date	1
2.2	Surface Development for 2006 and 2007.....	1
2.3	Surface Development for Next Five Years	2
3.0	Environmental Protection and Reclamation Program.....	2
3.1	Environmental Protection Program	2
3.2	Reclamation Program	2
4.0	Future Reclamation Programs	2
5.0	Reclamation Liability Cost Estimates	2

1.0 Introduction

The long-term reclamation objective is to provide one or more land use capabilities that will support land uses similar to, but not necessarily the same as, the land uses in existence before quarrying activities were commenced. Land use capabilities under consideration could include associated and/or other industrial activity over a period of hundreds of years. It is important to recognize that a Closure Plan was filed in 1977 and subsequently approved by the Ministry of Mines.

2.0 Quarrying Program

2.1 Surface Development to Date

The quarry and its required operating areas have disturbed approximately 12 ha (approx. 30 acres) as of December 31, 2007. See Table 1 for details.

- Material for the quarry is recycled from the old dumps from the open pit mine, augmented by drilling and blasting the solid rock material underneath the dump.
- The quarry has been developed in a series of benches, resulting in a terraced landscape. After blasting, the material is loaded on quarry trucks using front end loaders for transport to the aggregate crushing plant.
- The main quarry and operating areas do not intercept any defined watercourses on Texada Island.

2.2 Surface Development for 2006 and 2007

Up to and including 2007, 2 ha (approx. 5 acres) were recycled for use in quarry activities and operations. Total quarry production during 2007 resulted in approximately 1,469,587 tonnes of aggregate product for sale and shipment. See Table 1 for details.

2.3 Surface Development for Next Five Years

Anticipated expansion of the quarry over the next five years, based on current rates of production, should require developing of approximately 5 ha (approx. 12.5 acres). Quarry expansion should continue at about 1 ha (approx. 2.5 acres) per year given current markets and operating conditions. See Table 4 for details.

3.0 Environmental Protection and Reclamation Program

3.1 Environmental Protection Program

TQL is conducting a water sampling and monitoring program for Permit M-66. ARD control works manage the surface runoff. Monitoring wells were installed to test the ground water for metal concentration. The ARD control works are in compliance with conditions of Permit M-66.

3.2 Reclamation Program

TQL has submitted a Five Year Mine Plan for Permit M-66 for review and approval by BC Ministry of Energy and Mines in 2006.

4.0 Future Reclamation Programs

Based on the dynamic nature of the operation, progressive reclamation strategies are not appropriate for this site. The quarry and all areas associated with its operations remain active and are projected to remain active for hundreds of years. As a result, the reclamation program is general in nature and is focused on an industrial next use.

5.0 Reclamation Liability Cost Estimates

See Appendix A for total estimate of outstanding reclamation liabilities.

TABLE 1

SUMMARY OF AREAS DISTURBED AND RECLAIMED TO DECEMBER 31, 2007

COMPANY: Texada Quarrying Ltd. PERMIT NO. M-66

DISTURBANCE	MINING		RECLAMATION								LAND USE OBJECTIVE**
	AREA DISTURBED (ha)		AREA RECONTOURED (ha)		AREA SEEDED/PLANTED (ha)		AREA FERTILIZED (ha)		AREA REVEGETATED* (ha)		
	2007	TOTAL***	2007	TOTAL***	2007	TOTAL***	2007	TOTAL***	2007	TOTAL***	
WASTE DUMPS	0	0	0	0	0	0	0	0	0	0	
TAILINGS PONDS	0	0	0	0	0	0	0	0	0	0	
PLANT SITE	0	0	0	0	0	0	0	0	0	0	
ROADS	0	0	0	0	0	0	0	0	0	0	
ADMINISTRATION	0	0	0	0	0	0	0	0	0	0	
PIT AREAS	12.0	12.0	0	0	0	0	0	0	0	0	
STOCKPILES	0	0	0	0	0	0	0	0	0	0	
LINEAR (pipelines, powerlines, etc.)	0	0	0	0	0	0	0	0	0	0	
OTHER	0	0	0	0	0	0	0	0	0	0	
TOTAL	12.0	12.0	0	0	0	0	0	0	0	0	

* In order for an area to be recorded as “revegetated” it must have supported vegetation that will lead to the designated land use objective for at least one year.

** Specify land use. Options include: forestry, grazing, wildlife habitat, recreation, agricultural, industrial, residential, and other.

*** Total up to December 31, 2007.

TABLE 4
FIVE YEAR PROJECTION OF ANTICIPATED MINING AND RECLAMATION

COMPANY: Texada Quarrying Ltd. **PERMIT NO.:** M-66

	MINING						RECLAMATION																	
	AREA DISTURBED (ha)						AREA RECONTOURED (ha)						AREA SEEDED/PLANTED (ha)						AREA FERTILIZED (ha)					
YEAR	2008	09	10	11	12	Total	2008	09	10	11	12	Total	2008	09	10	11	12	Total	2008	09	10	11	12	Total
WASTE DUMPS	n/a	n/a	n/a	n/a	n/a	n/a	n/a	n/a	n/a	n/a	n/a	n/a	n/a	n/a	n/a	n/a	n/a	n/a	n/a	n/a	n/a	n/a	n/a	n/a
TAILINGS PONDS	n/a	n/a	n/a	n/a	n/a	n/a	n/a	n/a	n/a	n/a	n/a	n/a	n/a	n/a	n/a	n/a	n/a	n/a	n/a	n/a	n/a	n/a	n/a	n/a
PLANT SITE	0	0	0	0	0	0	0	0	0	0	0	0	0	0	0	0	0	0	0	0	0	0	0	0
ROADS	0	0	0	0	0	0	0	0	0	0	0	0	0	0	0	0	0	0	0	0	0	0	0	0
ADMINISTRATION	0	0	0	0	0	0	0	0	0	0	0	0	0	0	0	0	0	0	0	0	0	0	0	0
PIT AREAS	13	1	1	1	1	17	0	0	0	0	0	0	0	0	0	0	0	0	0	0	0	0	0	0
STOCKPILES	0	0	0	0	0	0	0	0	0	0	0	0	0	0	0	0	0	0	0	0	0	0	0	0
LINEAR (pipelines, powerlines, etc.)	0	0	0	0	0	0	0	0	0	0	0	0	0	0	0	0	0	0	0	0	0	0	0	0
OTHER	0	0	0	0	0	0	0	0	0	0	0	0	0	0	0	0	0	0	0	0	0	0	0	0
TOTAL	13	1	1	1	1	17	0	0	0	0	0	0	0	0	0	0	0	0	0	0	0	0	0	0

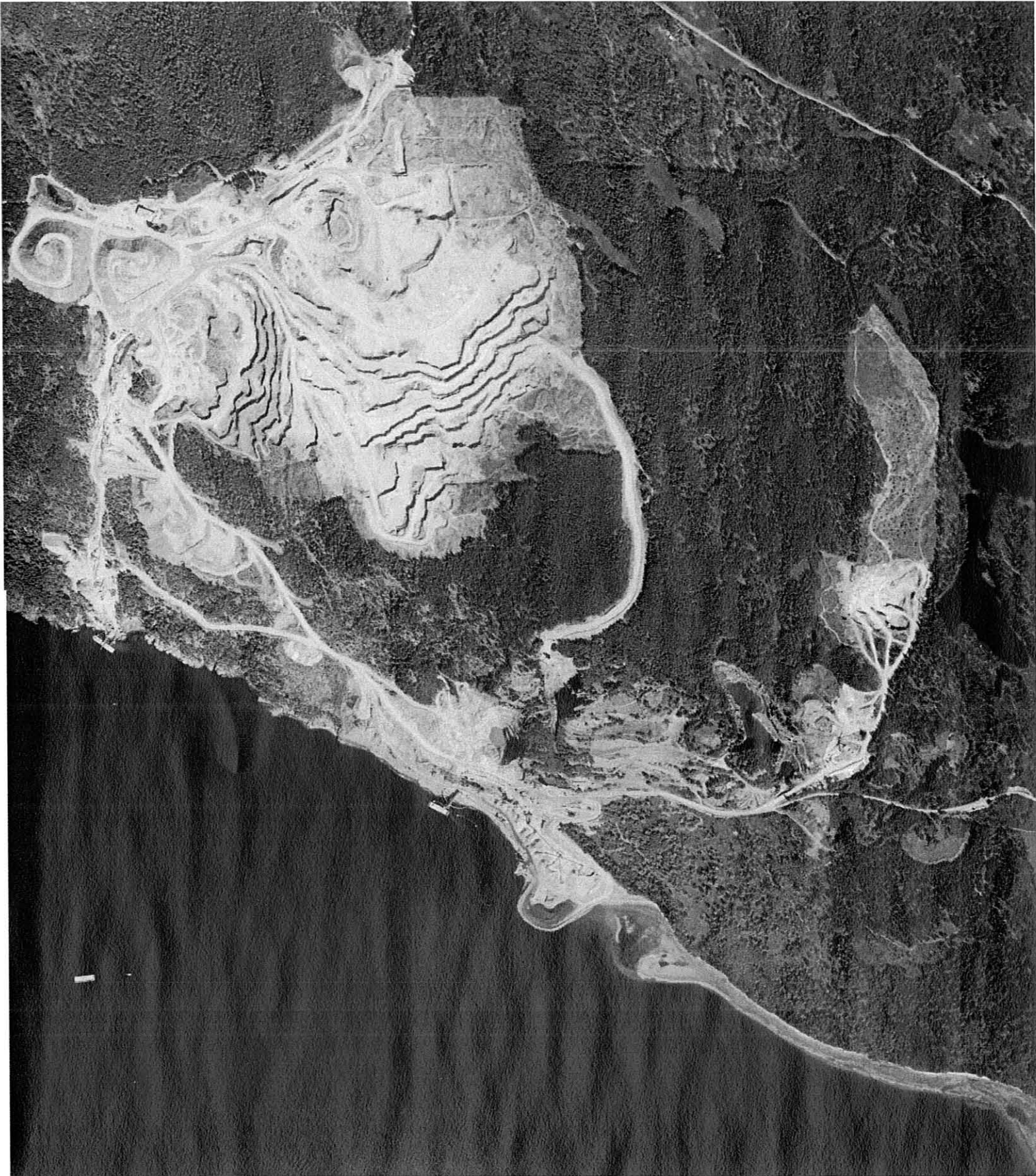
SUMMARY

Version 3.5.1
Appendix A

15-Apr-08
5:18 PM

Project Name:	Texada Quarrying Ltd.
Permit #:	M-66
Costing Year:	2006 & 2007

Mine Activity Category	AREA (ha)				RECLAMATION PRESCRIPTION			Total Cost
	Total Disturbed	Perm. Disturb.	Current Reclaimed	To be Reclaimed	Site Preparation	Revegetation	Maintenance	
AREA DISTURBANCE	12	12	0	12				
Dump Face Resloping								
Resloped	12	12	0	12	\$26,400	\$13,200	\$7,200	\$46,800
Master 1				0	\$0	\$0	\$0	\$0
Master 2				0	\$0	\$0	\$0	\$0
Master 3				0	\$0	\$0	\$0	\$0
Master 4				0	\$0	\$0	\$0	\$0
Master 5				0	\$0	\$0	\$0	\$0
Master 6				0	\$0	\$0	\$0	\$0
Master 7				0	\$0	\$0	\$0	\$0
Master 8				0	\$0	\$0	\$0	\$0
Master 9				0	\$0	\$0	\$0	\$0
Master 10				0	\$0	\$0	\$0	\$0
Master 11				0	\$0	\$0	\$0	\$0
Master 12				0	\$0	\$0	\$0	\$0
Master 13				0	\$0	\$0	\$0	\$0
Master 14				0	\$0	\$0	\$0	\$0
TOTAL	12.00	12.00	0.00	12.00	\$26,400	\$13,200	\$7,200	\$46,800
LUMP SUM ITEMS								
ARD Capital Costs								\$0
Mill Building								\$0
Admin. Building								\$0
Mill								\$0
Silos								\$0
Structures								\$0
Power line								\$0
Conveyor								\$0
Stockpiles								\$0
Sealing of Openings								\$0
Hauling--Surface Materials								\$0
Optional Item 1								\$0
Optional Item 2								\$0
Optional Item 3								\$0
Optional Item 4								\$0
Optional Item 5								\$0
Optional Item 6								\$0
Optional Item 7								\$0
POST CLOSURE COSTS								\$0
Present Value								\$0
TOTAL								\$46,800



Texada
Quarrying Ltd.

Box 160
Van Anda, B.C. V0N 3K0
Ph: (604) 486-7627 Fax: (604) 486-7280

March 26, 2009

Ministry of Energy and Mines and Petroleum Resources
7th Floor - 1675 Douglas St.
PO Box 9320 Stn Prov Govt
Victoria, BC V8W 9N3

Attention: Diane Howe
Senior Reclamation Scientist

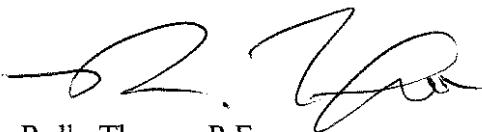
Dear Ms. Howe,

Re: Annual Reclamation Report – Q-15

Please find herein for your review and approval the Annual Reclamation Report for Permit Q-15.

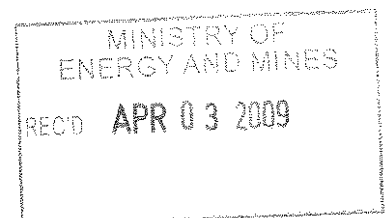
We trust that this Report is satisfactory. Should you have any questions, please do not hesitate to contact me.

Sincerely,
Texada Quarrying Ltd.



Rolly Thorpe, P.Eng
Quarry Development Manager

Attach.





Annual Reclamation Report for 2008

Company Name: Texada Quarrying Ltd.
Name of Property: Texada Island Limestone & Rock Products Quarry
Mines Act Permit Number: Q-15
Date: March 26, 2009

ANNUAL RECLAMATION REPORT FOR 2008

TEXADA QUARRYING LTD.

TABLE OF CONTENTS

1.0	Introduction.....	1
2.0	Quarrying Program.....	1
2.1	Surface Development to Date	1
2.2	Surface Development for 2008	2
2.3	Surface Development for Next Five Years	2
3.0	Environmental Protection and Reclamation Program.....	3
3.1	Environmental Protection Program	3
3.2	Reclamation Program	3
4.0	Future Reclamation Programs	3
5.0	Reclamation Liability Cost Estimates	3

1.0 Introduction

Given the long term sustainability of this site, a typical reclamation model is difficult to apply. The quarry and all areas associated with its operation remain active and are projected to remain active for hundreds of years. As a result, the reclamation program is general in nature. A long-term objective is to provide for a wide range of industrial uses over a period of hundreds of years.

2.0 Quarrying Program

2.1 Surface Development to Date

The quarry and its operating areas have disturbed approximately 265 ha (approx. 655 acres) as of December 31, 2008. See **Table 1** for details.

- The quarry and operating areas are situated within a massive limestone deposit. The limestone deposit is cut primarily by vertical or near-vertical dioritic dyke intrusions and sits conformably on a volcanic base. Starting at sea level, the south end of the deposit dips at -12° to the north. The average surface elevation in the active quarry area is about 230 metres (750 feet) above sea level. Overburden cover in the permit area is minimal.
- The quarry has been developed in a series of benches, resulting in a terraced landscape. Drilling and blasting is the primary technique employed in the quarry for removing limestone. New areas in the quarry are cleared by harvesting the merchantable trees and small amounts of

overburden are salvaged and stockpiled before drilling and blasting.

After blasting, the broken limestone is loaded on quarry trucks using front end loaders for direct haul to the main crushing plant.

- The main quarry and operating areas do not intercept any defined watercourses on Texada Island. Sediment control works manage the surface runoff captured or interrupted by surface disturbances in the main quarry and its operating areas.

2.2 Surface Development for 2008

During 2008, an additional 10 ha (approx. 25 acres) were cleared for use in quarry activities and operations. Total quarry production during 2008 resulted in 4,536,000 tonnes of limestone product for sale and shipment. See **Table 1** for details.

2.3 Surface Development for Next Five Years

Anticipated expansion of the quarry over the next five years, based on current rates of production, should require the clearing and opening of approximately 25 ha (approx. 62 acres). In 2009, expansion is estimated to be 5 ha (approx. 12.5 acres). For the following 4 years (2010 to 2014), quarry expansion is expected to continue at about 5 ha (approx. 12.5 acres) per year given current markets and operating conditions. See **Table 4** for details.

3.0 Environmental Protection and Reclamation Program

3.1 Environmental Protection Program

TQL is conducting a water sampling and monitoring program for Permit Q-15. Sediment control works manage the surface runoff captured or interrupted by surface disturbances in the main quarry and its operating areas. Discharges from the control works are in compliance with conditions of Permit Q-15.

3.2 Reclamation Program

The main quarry and all operating areas remain active. Available overburden matter is salvaged and stockpiled at this time in designated locations for future reclamation.

4.0 Future Reclamation Programs

Based on the dynamic nature of the operation, progressive reclamation strategies are not appropriate for this site. The quarry and all areas associated with its operations remain active and are projected to remain active for hundreds of years. As a result, the reclamation program is general in nature and is focused on an industrial next use.

5.0 Reclamation Liability Cost Estimates

See Appendix A for total estimate of outstanding reclamation liabilities.

TABLE 1

SUMMARY OF AREAS DISTURBED AND RECLAIMED TO DECEMBER 31, 2008

COMPANY: Texada Quarrying PERMIT NO. Q-15

DISTURBANCE	MINING		RECLAMATION								LAND USE OBJECTIVE**
	AREA DISTURBED (ha)		AREA RECONTOURED (ha)		AREA SEEDED/PLANTED (ha)		AREA FERTILIZED (ha)		AREA REVEGETATED* (ha)		
	2008	TOTAL***	2008	TOTAL***	2008	TOTAL***	2008	TOTAL***	2008	TOTAL***	
WASTE DUMPS	n/a	n/a	n/a	n/a	n/a	n/a	n/a	n/a	n/a	n/a	
TAILINGS PONDS	n/a	n/a	n/a	n/a	n/a	n/a	n/a	n/a	n/a	n/a	
PLANT SITE	0	5.0	0	0	0	0	0	0	0	0	
ROADS	0	7.5	0	0	0	0	0	0	0	0	
ADMINISTRATION	0	1.0	0	0	0	0	0	0	0	0	
PIT	10.0	238.5	0	0	0	0	0	0	0	0	
STOCKPILES	0	10.0	0	0	0	0	0	0	0	0	
LINEAR	0	3.0	0	0	0	0	0	0	0	0	
OTHER	0	0	0	0	0	0	0	0	0	0	
TOTAL	10.0	265.0	0	0	0	0	0	0	0	0	

EXEMPT ie pit high walls	0	ha
-----------------------------	---	----

* In order for an area to be recorded as "revegetated" it must have supported vegetation that will lead to the designated land use objective for at least one year.

** Specify land use. Options include: forestry, grazing, wildlife habitat, recreation, agricultural, industrial, residential, and other.

*** Total up to December 31, 2008.

TABLE 4
FIVE-YEAR PROJECTION OF ANTICIPATED MINING AND RECLAMATION

COMPANY: Texada Quarrying **PERMIT NO.:** Q-15

	MINING						RECLAMATION																	
	AREA DISTURBED (ha)						AREA RECONTOURED (ha)						AREA SEEDED/PLANTED (ha)						AREA FERTILIZED (ha)					
YEAR	2009	10	11	12	13	Total	2009	10	11	12	13	Total	2009	10	11	12	13	Total	2009	10	11	12	13	Total
WASTE DUMPS	n/a	n/a	n/a	n/a	n/a	n/a	n/a	n/a	n/a	n/a	n/a	n/a	n/a	n/a	n/a	n/a	n/a	n/a	n/a	n/a	n/a	n/a	n/a	n/a
TAILINGS PONDS	n/a	n/a	n/a	n/a	n/a	n/a	n/a	n/a	n/a	n/a	n/a	n/a	n/a	n/a	n/a	n/a	n/a	n/a	n/a	n/a	n/a	n/a	n/a	n/a
PLANT SITE	5	0	0	0	0	5	0	0	0	0	0	0	0	0	0	0	0	0	0	0	0	0	0	0
ROADS	7.5	0	0	0	0	7.5	0	0	0	0	0	0	0	0	0	0	0	0	0	0	0	0	0	0
ADMINISTRATION	1	0	0	0	0	1	0	0	0	0	0	0	0	0	0	0	0	0	0	0	0	0	0	0
PIT AREAS	243.5	5	5	5	5	263.5	0	0	0	0	0	0	0	0	0	0	0	0	0	0	0	0	0	0
STOCKPILES	10	0	0	0	0	10	0	0	0	0	0	0	0	0	0	0	0	0	0	0	0	0	0	0
LINEAR (pipelines, powerlines, etc.)	3	0	0	0	0	3	0	0	0	0	0	0	0	0	0	0	0	0	0	0	0	0	0	0
OTHER	0	0	0	0	0	0	0	0	0	0	0	0	0	0	0	0	0	0	0	0	0	0	0	0
EXEMPT (ie Pit high walls)	0	0	0	0	0	0	0	0	0	0	0	0	0	0	0	0	0	0	0	0	0	0	0	0
TOTAL	270	0	0	0	0	290	0	0	0	0	0	0	0	0	0	0	0	0	0	0	0	0	0	0

SUMMARY

Version 3.5.1
Appendix A

30-Mar-09
12:02 PM

Project Name:	Texada Quarrying - Texada Island Limestone and Aggregate Quarry
Permit #:	Q-15
Costing Year:	2008

Mine Activity Category	AREA (ha)				RECLAMATION PRESCRIPTION			Total Cost
	Total Disturbed	Perm. Disturb.	Current Reclaimed	To be Reclaimed	Site Preparation	Revegetation	Maintenance	
AREA DISTURBANCE	265	265	0	265				
Dump Face Resloping								
Resloped	265	265	0	265	\$600,300	\$300,100	\$163,700	\$1,064,100
Master 1				0	\$0	\$0	\$0	\$0
Master 2				0	\$0	\$0	\$0	\$0
Master 3				0	\$0	\$0	\$0	\$0
Master 4				0	\$0	\$0	\$0	\$0
Master 5				0	\$0	\$0	\$0	\$0
Master 6				0	\$0	\$0	\$0	\$0
Master 7				0	\$0	\$0	\$0	\$0
Master 8				0	\$0	\$0	\$0	\$0
Master 9				0	\$0	\$0	\$0	\$0
Master 10				0	\$0	\$0	\$0	\$0
Master 11				0	\$0	\$0	\$0	\$0
Master 12				0	\$0	\$0	\$0	\$0
Master 13				0	\$0	\$0	\$0	\$0
Master 14				0	\$0	\$0	\$0	\$0
TOTAL	265.00	265.00	0.00	265.00	\$600,300	\$300,100	\$163,700	\$1,064,100
LUMP SUM ITEMS								
ARD Capital Costs								\$0
Mill Building								\$0
Admin. Building								\$160,500
Mill								\$0
Silos								\$0
Structures								\$802,500
Power line								\$107,000
Conveyor								\$428,000
Stockpiles								\$240,800
Sealing of Openings								\$0
Hauling--Surface Materials								\$454,800
Optional Item 1								\$0
Optional Item 2								\$0
Optional Item 3								\$0
Optional Item 4								\$0
Optional Item 5								\$0
Optional Item 6								\$0
Optional Item 7								\$0
POST CLOSURE COSTS								\$0
Present Value								\$0
TOTAL								\$3,257,700