

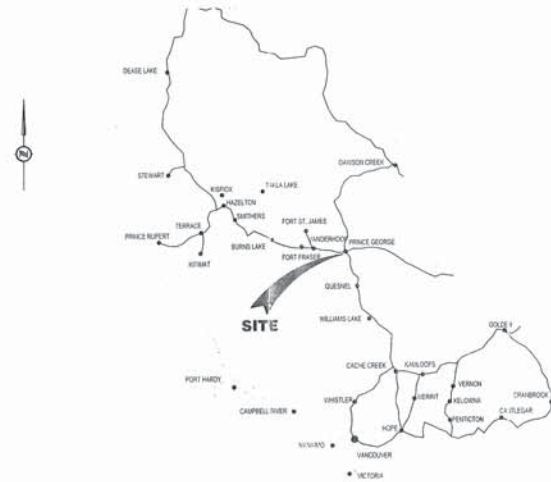
# NORTHSIDE DEVELOPMENTS LTD.

**DRAWING INDEX**

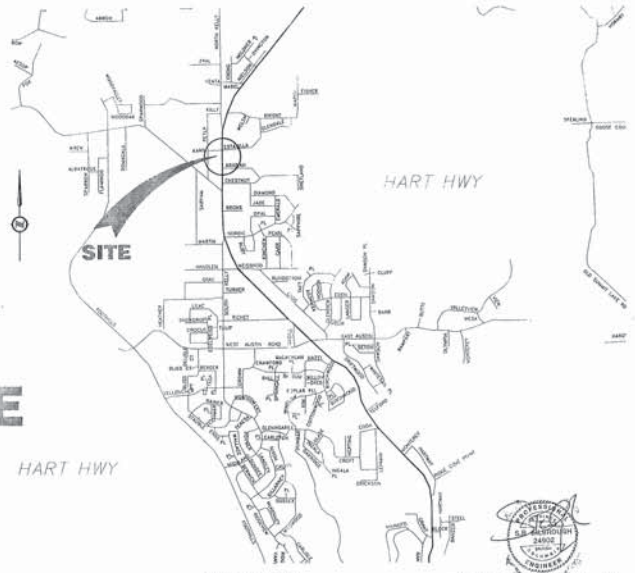
DRAWING No	DRAWING TITLE
001	SITE PLAN & TYPICAL SECTION
002	GEOMETRICS & SPOT ELEVATIONS

## HIGHWAY 97/ESTAVILLA RD.

## INTERSECTION UPGRADING NORTHBOUND DECELERATION LANE

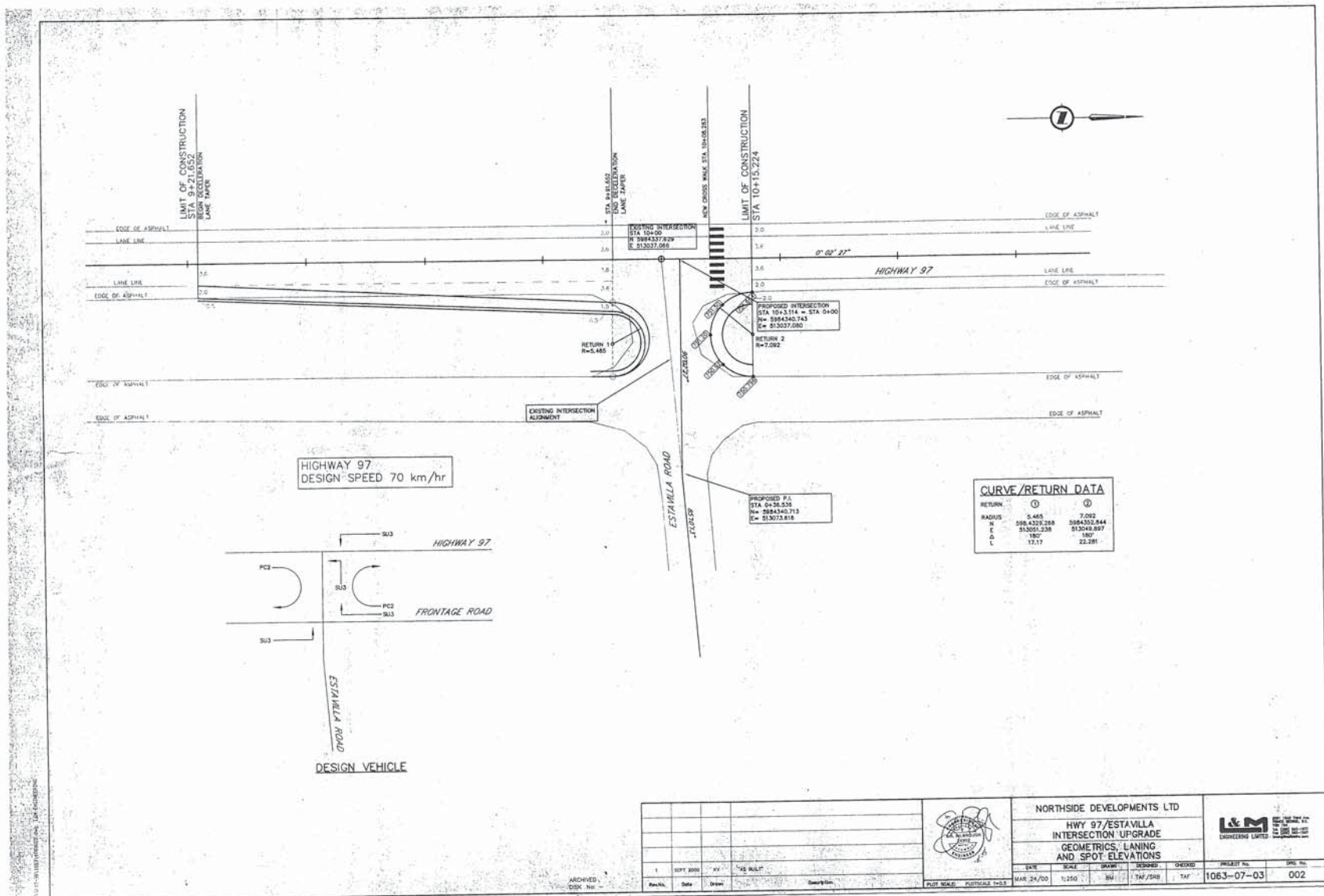


LOCATION PLAN



KEY PLAN

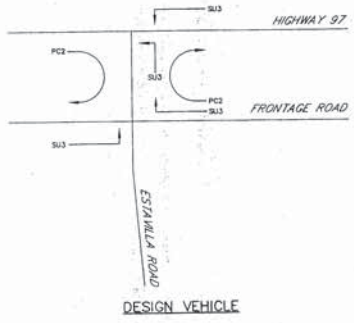
  
 "AS BUILT"  
 PROJECT No 1063-07-03  
 DATE: SEPT 2000



HIGHWAY 97  
DESIGN SPEED 70 km/hr

CURVE/RETURN DATA		
RETURN	①	②
RADIUS	5.465	7.092
N	588.429.288	588.432.844
E	51305.138	51304.887
S	180°	180°
L	17.17	22.281

PROPOSED P.I.  
STA 9+38.559  
CL ELEV = 513073.816

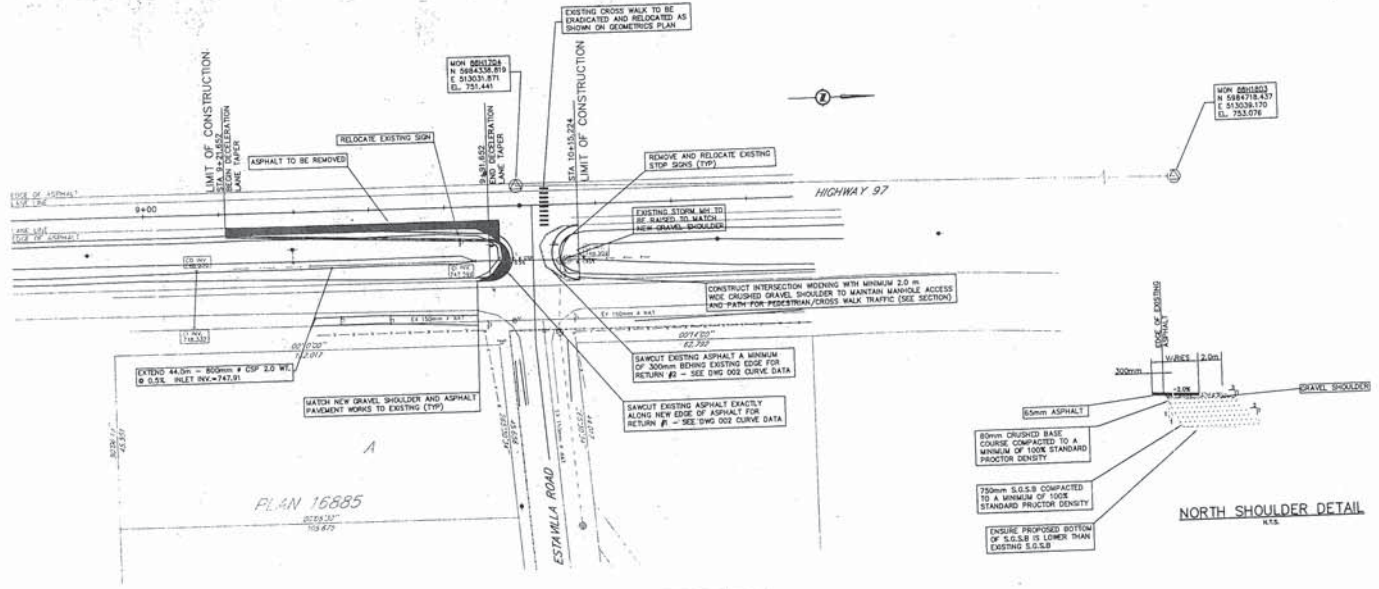


Rev. No.	Date	Drawn	Description
1	SEPT 2000	AV	AS BUILT

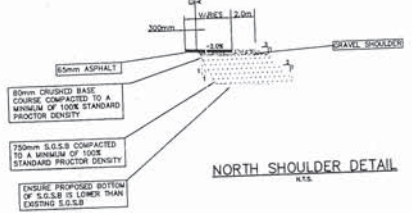


NORTHSIDE DEVELOPMENTS LTD  
HWY 97/ESTAVILLA INTERSECTION UPGRADE  
GEOMETRICS, LANING AND SPOT ELEVATIONS

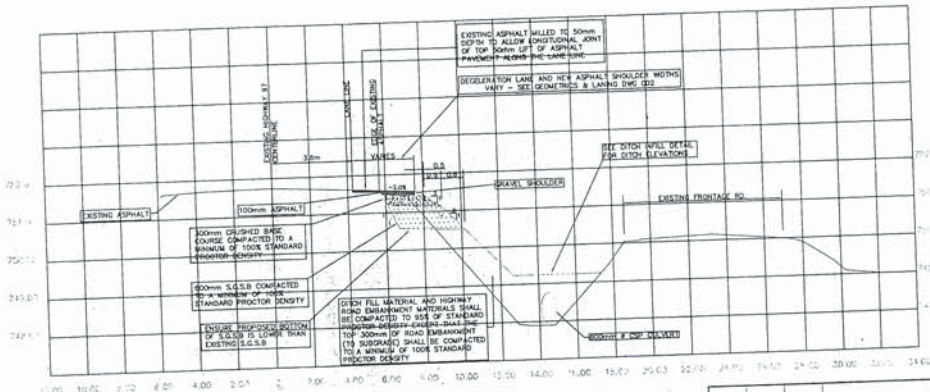
DATE	SCALE	DRWN	CHECKED	PROJECT NO.	SHEET NO.
MAR 24/00	1:250	SM	TAF/JSB	1063-07-03	002



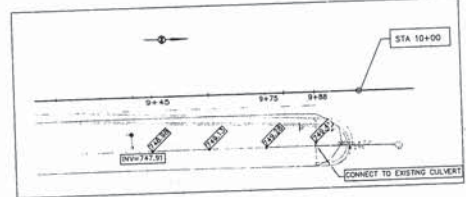
PLAN 16885



NORTH SHOULDER DETAIL



TYPICAL SECTION (STA 9+70)



DITCH INFILL DETAIL

FOR GEOMETRICS & LANNING SEE DWG 002  
FOR SPOT ELEVATIONS SEE DWG 002

		NORTHSIDE DEVELOPMENTS LTD.					
		HWY 97/ESTAVILLA INTERSECTION UPGRADE					
SITE PLAN		DATE	SCALE	DRAWN	CHECKED	PROJECT NO.	DWG NO.
		MAR 24/00	1:500	SM	SM	1063-07-03	001
REV	DATE	BY	DESCRIPTION				
1	SEPT 2000	RV	"AS BUILT"				
2	MAY 25, 01	SM	PEDESTRIAN ACCESS/SHOULDER SHOWN AS PER CITY/AVY REVIEW COMMENTS				