

Stewart, Ashley EMNG:EX

From: Coleman.MLA, Rich [Rich.Coleman.MLA@leg.bc.ca]
Sent: Friday, April 12, 2013 3:06 PM
To: Minister, EMH EMH:EX
Subject: FW: Port Metro Vancouver Land Use Plan - Phase 3
Attachments: 2013-04-09 Ltr to Hon. R Coleman, MLA Fort Langley-Aldergrove fr R Silvester re LUP Phase 3.pdf

From: Radloff, Nancy [mailto:Nancy.Radloff@portmetrovanancouver.com]
Sent: April-12-13 2:59 PM
To: Coleman.MLA, Rich
Subject: Port Metro Vancouver Land Use Plan - Phase 3

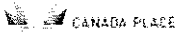
Dear Minister,

On behalf of Robin Silvester, President and Chief Executive Officer at Port Metro Vancouver, please find enclosed our letter regarding Port Metro Vancouver Land Use Plan - Phase 3.

Many thanks,

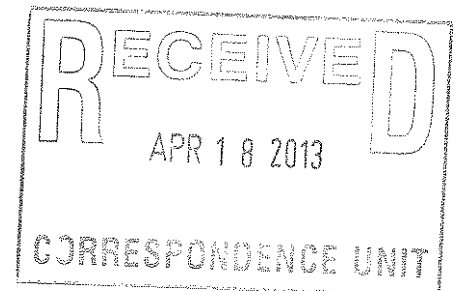
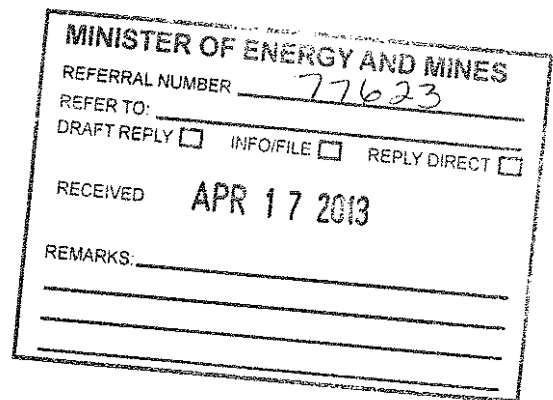
NANCY RADLOFF

Senior Executive Assistant to the President and Chair



PORT METRO VANCOUVER
100 The Pointe, 999 Canada Place
Vancouver, BC Canada V6C 3T4
direct: 604.665.9017
main: 604.665.9000 fax: 604.665.9020
portmetrovanancouver.com | canadaplace.ca

*Port Metro Vancouver and Canada Place Corporation integrated on December 1, 2012.
Canada Place, an inspiring national landmark, welcomes you to Canada's Pacific Gateway.*





PORT METRO
vancouver

April 9, 2013

The Honourable Rich Coleman
Minister of Energy and Mines
MLA Fort Langley-Aldergrove

Dear Minister Coleman:

Thank you for your past participation in Port Metro Vancouver's (PMV) Land Use Plan update process. We greatly appreciate your organization's contribution in the development of PMV's Land Use Plan. I would like to extend an invitation to you to participate in Phase 3 of the process throughout the Spring and Fall of 2013, which is intended to produce the draft plan.

Background

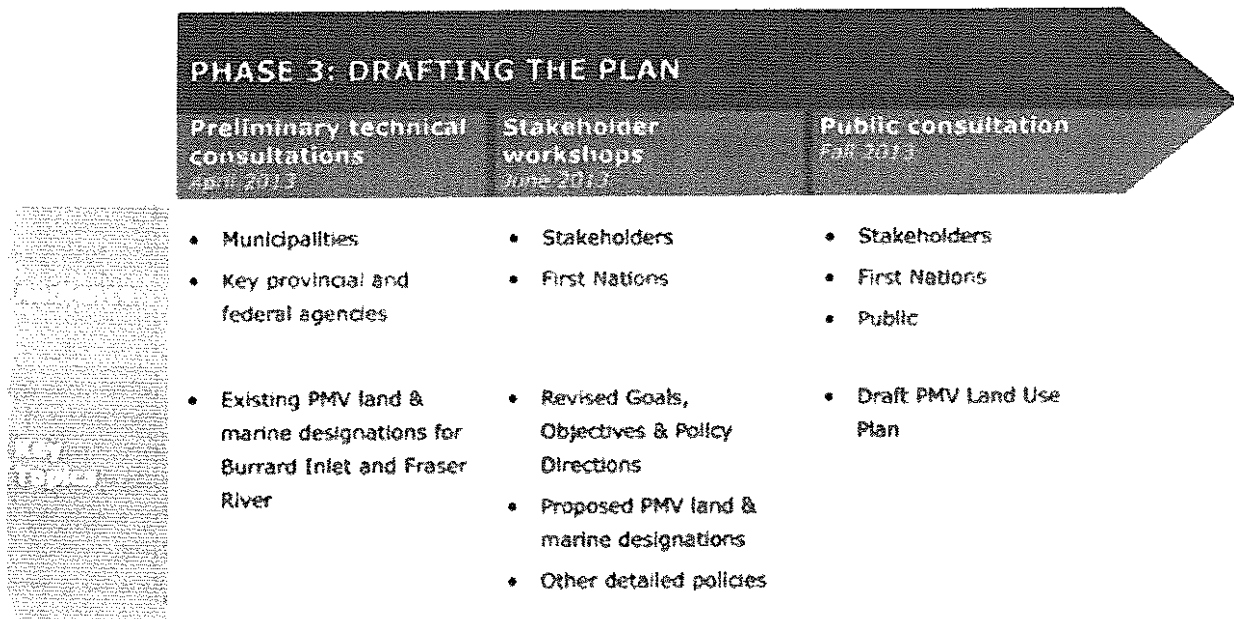
The Canada Marine Act requires every Canadian port authority to have a land use plan that contains objectives and policies for the physical development of the property it manages. Our current Land Use Plan is a compilation of three separate plans from each of the region's former port authorities that amalgamated in 2008 to form Port Metro Vancouver. In 2012, we began the process to update the Land Use Plan by seeking input from stakeholders and the community to identify major issues and priorities, which were then combined in the second phase with further research into best practices to develop draft goals, objectives and policy directions.

Phase 3

We are now launching Phase 3 of the Land Use Plan consultation, which will focus on developing a draft plan using the technical work and consultation activities conducted in earlier phases. In order to provide many opportunities for input, there will be stakeholder and public consultation in three distinct parts, each focusing on key core concepts that will form the main body of the draft Land Use Plan.

By consulting early, and at key points throughout the Spring of 2013, we hope to provide interested stakeholders, First Nations and the public with meaningful opportunities to provide input into the development of the draft Land Use Plan to be produced by November of 2013.

The Honourable Rich Coleman
MLA Fort Langley-Aldergrove
LUP Phase 3 Launch
Page 2



If you require additional information or have questions, please contact Greg Yeomans, Manager of Planning, at (604) 665-9384 or email at greg.yeomans@portmetrovanancouver.com.

Thank you for your ongoing involvement in Port Metro Vancouver's Land Use Plan process, and we look forward to your organization's participation and comments.

Yours truly,

PORT METRO VANCOUVER

Robin Silvester
President and Chief Executive Officer

Centre of Excellence for Marine Transportation of Oil and LNG Commodities

**Proposal to Establish a Centre of Excellence for
Marine Transportation of Oil and LNG
Commodities in British Columbia**

May 18, 2013

Proposal to Establish a Centre of Excellence for Marine Transportation of Oil and LNG Commodities in British Columbia

Introduction

Marine transportation of oil and LNG commodities is poised to increase significantly in British Columbia in the coming years. To enable sound development decisions and effective ongoing management, all parties require access to the best possible information regarding environmental risks and capacity to mitigate and manage these risks. This document outlines a proposal to establish a centre of excellence to identify and deliver the highest standards and global best practices for the safe and sustainable marine transportation of oil and LNG commodities on Canada's Pacific Coast.

Core Issue

Industry, government and Port Metro Vancouver have identified a need for a central collaborative body to become the leading source of information on best practice marine transportation of oil and LNG commodities on Canada's Pacific Coast. There is currently no coordinated group within Canada or on the West Coast which performs this role. Combining resources to facilitate research and development in this area would help to improve the overall knowledge base on best practices for the shipment of oil and LNG commodities, and oil spill preparedness and response, and assist Canada in becoming a leader in the safe and sustainable marine transportation of bulk liquids.

There is also an opportunity to enable more productive conversations among interested parties and stakeholders regarding oil and LNG transportation and spill preparedness in the Vancouver Gateway. The current public conversation, particularly with respect to the transport of heavy oil, is characterized by "dueling science"; parties accuse one another of manipulating facts and selecting evidence in order to support predetermined conclusions. While there will always be a need to debate aspirations and values, the proposed centre can help ensure that this conversation is based on a greater shared understanding of risks, mitigation measures, current practices and potential new initiatives for future growth in this sector, which is important to Canadian prosperity and international trade.

Proposal

It is proposed that a Centre of Excellence for safe and sustainable marine transportation of oil and LNG commodities be established. This Centre will build on existing activities and fundamental principles, as well as best practices established internationally, to assist Canada in becoming a leader in this area.

The Centre of Excellence will:

- Identify and co-ordinate research and development of shipment of oil and LNG commodities and provide a forum for the development of industry leading best practices and for dialogue with stakeholders and communities.
- Serve as the definitive and trusted source for information, communications, education and awareness on safe handling of oil and LNG, storage, marine transportation, and spill prevention, preparedness and operational and financial response
- Provide a structured framework for monitoring the environmental and social effects (positive and negative) of shipment of oil and LNG commodities, and develop a common methodology on how spill risks will be assessed.

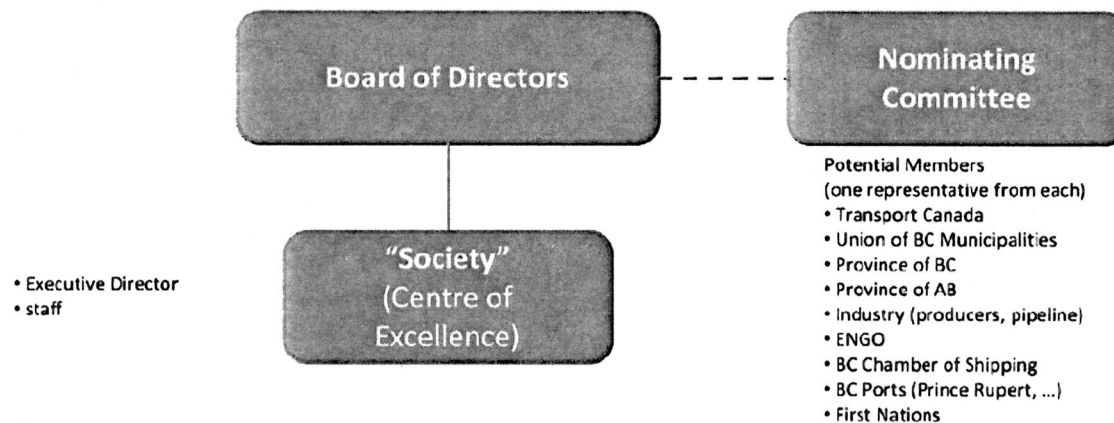
Mandate

The proposed mandate of the Centre of Excellence is:

- To be the leading independent source of information on best practices for shipping Canada's oil and LNG commodities on Canada's Pacific Coast.
- To promote and facilitate research and regulatory frameworks that deliver the highest standards in the safe and sustainable shipment of Canada's oil and LNG commodities.

Governance Structure

The Board of Directors of the Centre of Excellence initially comprises of seven positions. For each of the six Board positions, the Nominating Committee recommends two candidates and the PMV Board will appoint one. The seventh position is a PMV staff member directly appointed by the PMV Board.



The detailed governance framework for the establishment of the Centre of Excellence is still under development. The proposal is that the Centre of Excellence is established as a registered independent non-profit organization, governed by a board of directors drawn from community and First Nations leaders as well as academia and industry

The funding model for the proposed Centre of Excellence is also under development but early engagement indicates that the energy industry, Federal Government and Provincial Government of Alberta, will provide the initial funding through lump sum contributions, consistent with a governance model that maintains the independence and credibility of the Centre. The centre will be supported by an Executive Director and two staff initially, and will have links to research facilities.