

Evergreen Line Rapid Transit Project

Project Board

AGENDA

CONFIDENTIAL

Subject:	Regular Project Board meeting	Project Meeting #20
Date:	July 24, 2014	
Time:	3:00 p.m. – 5:00 p.m.	
Location:	s15	

AGENDA

Item	Board Requirement	Lead	Time
20.1. Call to Order and Approval of Agenda	Decision	K. Richter	3:00
20.2 Approval of Minutes from February 13, 2014	Decision	K. Richter	3:05
Project Status Updates			
20.3 Director's Project Update	Information	A. Farrell	3:10
20.4 Financial Update	Information	A. Farrell	3:40
New Business			
20.5 Performance Measurement Framework	Information	A. Farrell	4:00
20.6 Future Meetings	Information	A. Farrell	4:30
20.7 Adjournment		K. Richter	5:00

Evergreen Line Rapid Transit Project

Meeting Number #20

July 24, 2014

Project Board Members Present:

Grant Main - Regrets
Fred Cummings (teleconference)
Ian Jarvis (teleconference)
Kevin Richter

Project Board Support:

Amanda Farrell
David Beckley
David Chang
John Eastman
Raymond Louie
Stu Jackes
James Harvey
Jon Buckle
Dave Stewart
Kate Sloan – Note Taker

19.1 Call to Order and Approval of Agenda – K. Richter

The meeting was called to order at 3:05p.m. The meeting was chaired by K. Richter.

The agenda was approved as circulated.

19.2 Approval of Minutes from February 13, 2014 – K. Richter

The minutes of the February 13, 2014 ELRT Project Board meeting were approved as circulated.

Action Item Review:

- No actions were reviewed at this time.

Project Status Updates

19.3 Director's Project Update– A. Farrell

A. Farrell distributed a Project Board Update presentation to supplement the Quarterly Progress Report and Project Status dashboard that was circulated in the meeting materials.

A. Farrell provided an overview of the document highlighting the following:

- Properties: The property files are 97% complete. The contractor has all properties needed for construction. The remaining properties are related to parking and are close to being resolved. TransLink and Province are working together on the SRW review.
- Federal Funding: The committee continues to meet regularly. The next meeting is August 6th which will include a tour of the construction site. Project has submitted a draft of the annual report. The audit is in process and expected to be done by end of July.
- First Nations: EGRT have met their contractual commitments to provide opportunities.

Evergreen Line Rapid Transit Project

- Environmental: Main work areas around creeks are well under way.
-

s17

- Communications: EGRT continues to provide the community with construction bulletins advising residents of upcoming construction activities. In June, there was an issue with the guideway launching truss and the Project dealt with related media questions. At the north portal, Project worked with residents feeling and hearing the TBM operations. Staff worked directly with residents to communicate tunnel construction activities. In early July, a truck delivering a guideway segment rolled on-route; the guideway segment was replaced. In July, there was a SkyTrain operation shutdown and was linked to the Evergreen Line construction in the media. Discussions on a possible 50% complete event in the fall are on-going.

R. Louie provided an overview of design and construction highlighting the following:

- Design: All of the station designs are complete and construction is underway. The Project meets weekly with TransLink and EGRT to discuss any changes. The guideway design is complete. The systems design is approximately 80% complete. The Project meets regularly with TransLink and BCRTC to deal with issues.
- Construction: All sites along the alignment are under construction. Segment casting is progressing ahead of schedule with more than 685 of 1005 guideway segments completed and more than 7,096 of 10,384 tunnel liner segments cast.
- Tunnel: In early June, the tunnel boring machine re-commenced with the stage 2 worksite. TBM has been slower than anticipated due variable ground conditions requiring TBM maintenance and changing cutter head tools. To date, there are approximately 134 rings completed out of 1298. During the TBM maintenance, an air pocket was formed underground at the front of the TBM. The contractor located and filled the air pocket.
- Guideway truss: The launching truss is currently at three intersections south of Cameron. The guideway is 64% complete along Clarke/North Road and is anticipated to be completed by September. EGRT has extended hours of work along North Road. Once the truss reaches Loughheed Station, it will move to Coquitlam. The Project will work with WCE to minimize issues at the Coquitlam Station.
- South portal: The guideway slab and retaining walls are complete. The rail welding will commence in early August. Bored tunnel construction may continue into 2015. Project is monitoring the tunnel progress closely.
- At grade guideway construction: The soil mixing is complete in Port Moody. EGRT is pouring guideway slab between Reichhold and Port Moody overpass. Timber piling 56% complete and the MSE wall construction has commenced. Timber piling progress has been slower than anticipated.

Evergreen Line Rapid Transit Project

- Aberdeen special structure: The cranes are on-site to lift the guideway I-beams.
- Pinetree special structure: The steel box girders have been erected. The steel piling is complete except for at Loughheed due to utilities.
- Douglas special structure: The precast box girders have been installed.
- Loughheed town centre: The construction is well-advanced at this station. The escalators are being installed. Crews are working on the roof structure. The special trackwork has been installed.
- Burquitlam: This station is 19% complete. The steel work will commence soon.
- Coquitlam Central: All guideway spans are installed. This station is 11% complete.
- Lincoln: Construction has commenced.
- Lafarge Lake Douglas: Station construction is progressing well.
- LIM rail production: 740 panels have been completed. Project has observed good quality control of fabrication.
- Vehicles: The final design is complete. The first train delivery is scheduled for August 2015.
- Concurrent works: This work includes station plazas and landscaping. The Project is currently incorporating final comments and reviewing the interface scope with EGRT at stations.
- Public art: Coquitlam completed a RFP process and has selected art items that will go to council in mid-September. A briefing note will be provided.

Action

Briefing Note will be provided to board members once finalised.

19.4 Financial Update – A. Farrell

A. Farrell distributed the financial summary to supplement the Quarterly Progress Report that was circulated in the meeting materials.

A. Farrell provided an overview of the document highlighting the following:

- Overall, the Project remains on-budget. s17

s17

- s17
- Generally, the Project tracking is moving forward as forecasted.
- s17

New Business

Evergreen Line Rapid Transit Project

19.5 Performance Measurement Framework – A. Farrell

A. Farrell distributed a draft Performance Measurement Plan and provided an overview of the document highlighting the following:

- Incorporated comments from TransLink and MoT.
- Considered complete.
- Challenge is to start measuring and implementing.
- Metrics are readily available on residential and commercial development. Project has asked municipalities for this information and they have indicated they are able to meet all the requirements. The information is forthcoming from Coquitlam and Port Moody. Burnaby not as relevant.
- Metrics from TransLink are available through the systems that TransLink have in-place. The most important is the Trip Information (% of change in vehicle kilometres travelled). Take part in future studies that TransLink has established.
- Modest effort in terms of future research.
- Will approve at board and send document to TransLink via letter.

19.6 Future Meetings – A. Farrell

The next quarterly meeting is tentatively scheduled for late October. The quarterly report will be compiled at the end of September.

Action

Next meeting date to be confirmed by the Project Office.

19.7 Adjournment – K. Richter

The meeting was adjourned at 3:53pm.

EVERGREEN LINE



Evergreen
LINE
Fast, Frequent, Convenient

Evergreen Line Project

Project Board Update CONFIDENTIAL

Presented by:
Amanda Farrell

July 2014



Canada

TRANS LINK



1. General

- Property
- Funding Partners
- Communications and Community Relations
- First Nations
- Environmental
- Risks



Canada



2. Primary Contract

- Work On-Site
 - All guideway sites under construction
 - All Station sites under construction
 - More than 3,363 of 6,019 timber piles installed
- Casting
 - More than 685 of 1005 guideway segments completed
 - More than 7,096 of 10,384 tunnel liner segments cast
- Tunnel Boring Machine (near Critical Path)
 - Boring re-commenced in June 2014
- Section 425 – Timber Piling (near Critical Path)
 - More than 3,363 of 6,019 timber piles installed

•

s17



3. Primary Contract –Design

Station Design Progress

Station	Design Progress
Lougheed Town Centre Station	100% Complete
Burquitlam Station	
Moody Centre Station	
Inlet Centre Station	
Lafarge Lake – Douglas Station	
Coquitlam Central Station	
Lincoln Station	



4. Primary Contract –Design

Guideway Design Progress

Guideway Segment	Design Progress
Segment 1 – Lougheed to Tunnel	100% Complete
Segment 2 – Tunnel	100% Complete
Segment 3 – Port Moody	100 % Complete
Segment 4 – CPR Crossing / Cut	100% Complete
Segment 5 – Pinetree Way	100% Complete

Systems Design Progress

- 80% Complete



Canada

TRANS LINK



Evergreen
LINE
Fast, Frequent, Convenient

5. Primary Contract cont'd

North Road Elevated guideway construction



Canada

TRANS LINK



Evergreen
LINE
Fast, Frequent, Convenient

6. Primary Contract cont'd

South Portal guideway construction



Canada
TRANS LINK



Evergreen
LINE
Fast, Frequent, Convenient

7. Primary Contract cont'd

Bored Tunnel construction



Canada

TRANS LINK



Evergreen
LINE
Fast, Frequent, Convenient

8. Primary Contract cont'd

At-Grade guideway construction



Fast, Frequent, Convenient

9. Primary Contract cont'd

Timber Piling construction



Canada

TRANS LINK



Evergreen
LINE
Fast, Frequent, Convenient

10. Primary Contract cont'd

Aberdeen Special Structure guideway construction



Canada

TRANS LINK



Fast, Frequent, Convenient

11. Primary Contract cont'd

Pinetree Special Structure guideway construction



Canada

TRANS LINK



Evergreen
LINE
Fast, Frequent, Convenient

12. Primary Contract cont'd

Douglas Special Structure guideway construction



Fast, Frequent, Convenient

13. Primary Contract cont'd

Lougheed Town Centre Station construction



Canada

TRANS LINK



Fast, Frequent, Convenient

14. Primary Contract cont'd

Burquitlam Station construction



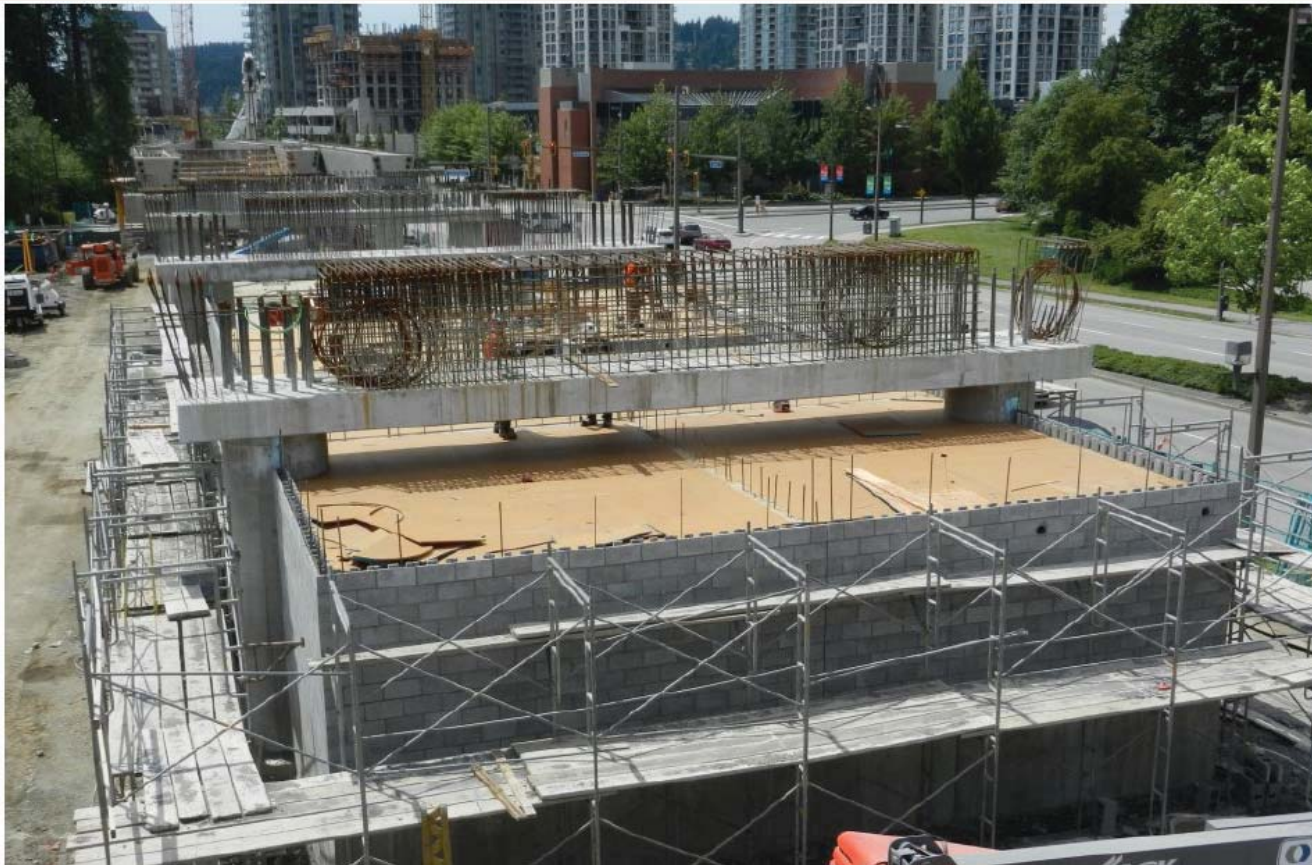
15. Primary Contract cont'd

Coquitlam Station construction



16. Primary Contract cont'd

Lafarge Lake-Douglas Station construction



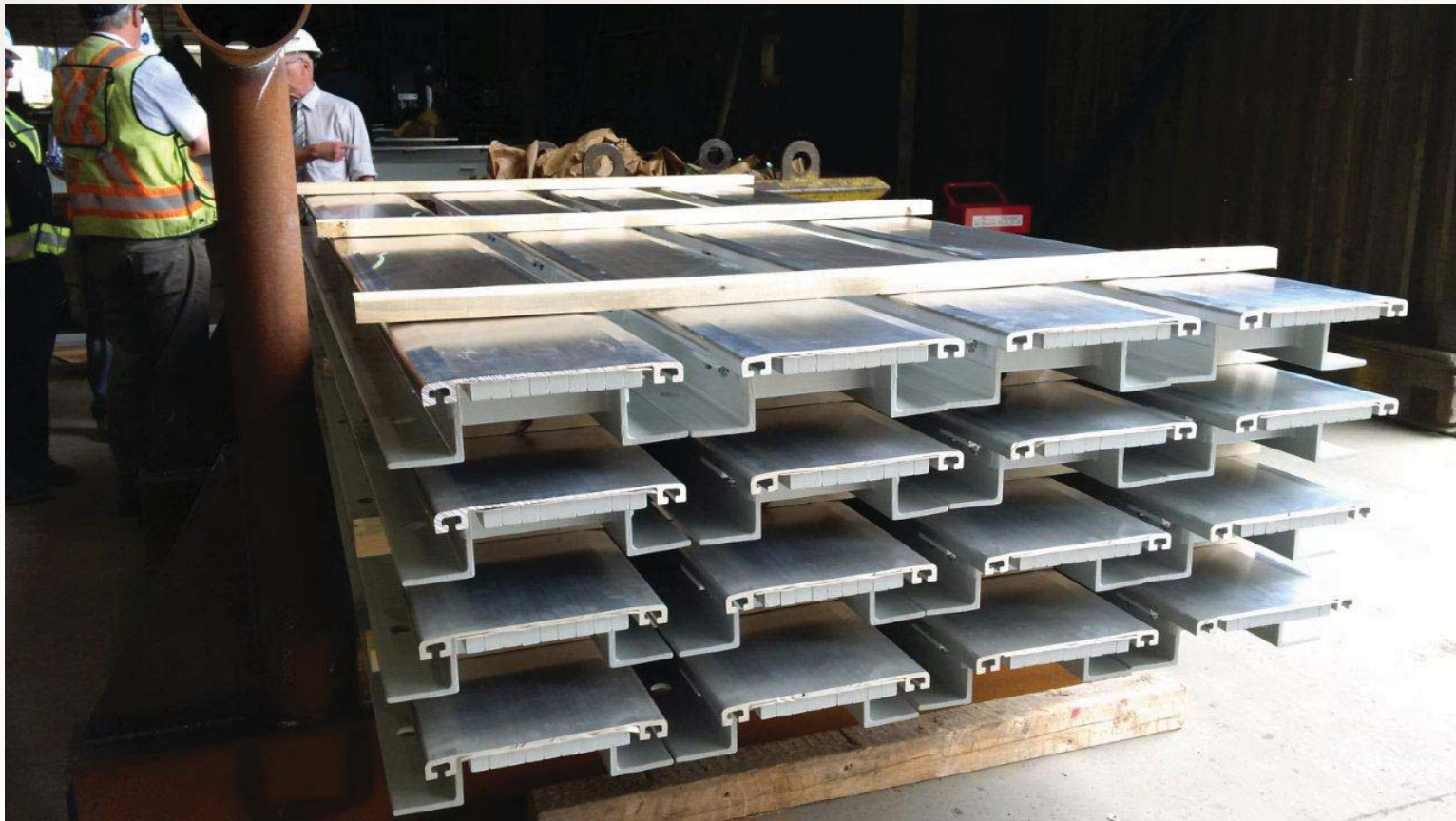
Canada



Evergreen
LINE
Fast, Frequent, Convenient

17. Primary Contract cont'd

LIM Rail Production



Canada

TRANS LINK




Evergreen
LINE
Fast, Frequent, Convenient

18. Primary Contract cont'd

All Station Sites under construction

- Lougheed Town Centre
- Burquitlam
- Moody Centre
- Inlet Centre
- Coquitlam
- Lincoln
- Lafarge Lake-Douglas



Canada

TRANS LINK




Fast, Frequent, Convenient

19. Vehicles

- 28 new vehicles
 - Final design complete
 - Assembly of first vehicle in June 2014
 - First train delivery August 2015



Canada



20. Concurrent Works

- Concurrent Works
 - Station Plazas
 - Transit Integration (Bus Loops, park and ride, PPUDO, Bike)
 - South Portal
 - Landscaping Plan
 - Public Art



21. Project Budget and Financial Update

- Budget - \$1,431 million

-

\$17

-

\$17

- Cashflow analysis



Canada

TRANS LINK



Evergreen
LINE
Fast, Frequent, Convenient

22. Performance Measurement Plan (PMP)

- Framework for evaluating if project objectives have been met
- Links Project Business Case to actual performance
- Based on results oriented data
- Allows for assessment of changes over time
- Aligned with Capital Asset Management Framework (CAMF)



Canada

TRANS LINK



Evergreen
LINE
Fast, Frequent, Convenient

23. Performance Measurement Plan, cont'd.

Process to develop PMP:

- Started with project goals and objectives
- Selected objectives that had measureable outcomes
- Consulted with stakeholders (TransLink, Municipalities, Transit Branch)
- Short listed to 4 – 5 key representative measures



Canada

TRANS LINK



Evergreen
LINE
Fast, Frequent, Convenient

24. Performance Measurement Plan, cont'd.

The Measures:

Goal	Objective	Performance Measure
<ul style="list-style-type: none"> • Increase Transportation Choice 	Increase people moving capacity in North East Sector	Actual vs. forecast average daily ridership for Evergreen Line.
<ul style="list-style-type: none"> • Increase Transportation Choice 	Reduction in automobile use	Percent of change in Vehicle Kilometres Travelled (VKT)
<ul style="list-style-type: none"> • Increase Transportation Choice 	Reduction in Green House Gasses	Derived “tonnes” from VKT
<ul style="list-style-type: none"> • Increase Transportation Choice 	Ensure Evergreen speed and reliability	Percentage on time performance
<ul style="list-style-type: none"> • Support Growth Management 	Growth in residential, retail and office development around stations	Increase in floor area within 800m of stations



25. Performance Measurement Plan

Next steps:

- Finalise baseline measures
- Assign responsibilities for data collection, methodologies and frequencies
- Ensure governance and reporting responsibilities are understood and confirmed



Canada

TRANS LINK




Fast, Frequent, Convenient