

Proposal to
the Government of British Columbia:

Phase II Capital Funding for the BC SPCA
Facilities Development & Services Plan

BCSPCA
SPEAKING FOR ANIMALS

THE BRITISH COLUMBIA SOCIETY FOR THE PREVENTION OF CRUELTY TO ANIMALS

August 15, 2016

INDEX

SECTION 1.0	EXECUTIVE SUMMARY
SECTION 2.0	INTRODUCTION
2.1	About the BC SPCA
2.2	Programs and Services
2.3	Statistics at a Glance
2.4	A Commitment to Transparency and Accountability
2.5	Growth and Financial Stability
SECTION 3.0	THE BC SPCA FACILITIES DEVELOPMENT AND SERVICES PLAN
3.1	The Cost of Constructing Community Animal Centres and BC SPCA Expertise in the Area
3.2	Phased Approach to Implementing the FDSP
3.3	Financial Commitment to the Project by the BC SPCA
3.4	Financial Commitment of the Government of British Columbia and Funding Request for Phase Two
3.5	The Case for Support for Further Funding by the Government of British Columbia
3.6	Media Interest and Publicity of Initial Government Funding
SECTION 4.0	PHASE ONE PROJECTS (COMPLETED OR IN PROGRESS)
4.1	Nanaimo
4.2	Surrey
4.3	Kelowna
4.4	Kamloops
4.5	Castlegar
4.6	Dawson Creek
SECTION 5.0	PHASE TWO PROJECTS (PROVINCIAL GOVERNMENT FUNDING REQUESTED)
5.1	Vancouver
5.2	Prince George
5.3	Fraser Valley
SECTION 6.0	PHASE THREE PROJECTS (PROVINCIAL GOVERNMENT FUNDING NOT SOUGHT AT THIS TIME)
6.1	Salmon Arm
6.2	Kelowna
6.3	Nanaimo
6.4	Surrey
6.5	Campbell River
6.6	Cowichan
SECTION 7.0	THANK YOU TO THE GOVERNMENT OF BRITISH COLUMBIA
SECTION 8.0	APPENDICES
Appendix A:	Audited Financial Statements of the BC SPCA for Period Ending December 31, 2015
Appendix B:	BC SPCA Facilities Summary

Section 1.0 - Executive Summary

The British Columbia Society for the Prevention of Cruelty to Animals (the “BC SPCA” or the “Society”) is a not-for-profit charitable organization dedicated to protecting and enhancing the quality of life for domestic, farm and wild animals in British Columbia.

Supported by more than 80,000 British Columbians, BC SPCA Special Constables investigate in excess of 10,000 complaints of animals in distress each year under the *Prevention of Cruelty to Animals Act* (PCAA). The recent puppy mill seizures in Langley emphasize the critical role that the BC SPCA plays in communities across the province and the value that British Columbians place in the work of the BC SPCA.

The BC SPCA operates forty-one facilities across the province. A review of facilities undertaken in 2013¹ identified an urgent need to replace nine facilities and to make improvements in three others. This review resulted in the adoption of a Facilities Development and Services Plan (FDSP), which seeks to replace or improve twelve facilities over eight years at a cost of \$53.9 million.

The first phase of the FDSP (2014 to April 2017) covers facility replacement or redevelopment at six facilities (Nanaimo; Kelowna; Surrey; Kamloops; Castlegar; and Dawson Creek) at a total projected cost of \$15.9 million. The Government of British Columbia has very generously provided \$5 million in capital funding for phase one of the FDSP. Through additional support from local governments, foundations and private donors, the BC SPCA will have secured the remaining \$10.9 million required to complete these projects. Phase one projects include:

- Construction of a new Nanaimo Community Animal Centre at a cost of \$3.56 million. The project was completed with an allocation of \$1.3 million in provincial government funding;
- Construction of a large animal recovery and adoption barn in Kelowna at a total cost of \$259k, completed with \$100k of provincial government funding allocated to the project;
- Construction of a large animal recovery and adoption barn, cat seizure facility, education and adoption centre in Surrey at a cost of \$2.6 million. \$400k in provincial government funding was allocated to complete this project;
- Construction in early 2017 of a new Kamloops and District Community Animal Centre and Spay Neuter Clinic to replace existing facilities at a projected cost of \$4.75 million, with \$1.5 million of provincial government funding provisionally allocated to the project;
- Construction slated for spring 2017 of a new West Kootenay Community Animal Centre in Castlegar to replace the Trail animal shelter at a projected cost of \$1.95 million, with \$900k of provincial government funding allocated to this project; and
- Construction slated for spring 2017 of a new South Peace Community Animal Centre in Dawson Creek to replace the existing animal shelter at a total projected cost of \$2.85 million, with \$800k in provincial government funding tentatively allocated to the project.

¹ Updated for 2016 submission to Government of British Columbia

The Society has now begun detailed preparations for phase two of the FDSP, which covers a four-year period from 2017 to 2020 and involves replacement of its three largest and busiest facilities - Vancouver, the Fraser Valley and Prince George - at a total projected cost of \$30 million. The projects include:

- Construction of a new 40,000 square foot flagship BC SPCA Campus in Vancouver, comprising Community Animal Centre, Veterinary Hospital and Provincial Office to replace the existing 57-year-old facility at a projected cost of \$20.5 million;
- Construction of a 7,500 square foot Prince George Community Animal Centre and 2,500 square foot large animal recovery barn to replace the existing animal shelter at a total projected cost of \$4.2 million; and
- Construction of an 8,000 square foot Fraser Valley Community Animal Centre and 2,500 square foot Spay Neuter Clinic to replace the facilities located in Abbotsford and Chilliwack at a total projected cost of \$5.25 million.

Over the past two years, the BC SPCA has been able to leverage the \$5 million in provincial government support with the assistance of local government and its own donors. As such, the Society is confident that over the course of the next three years it can raise two-thirds² of the cost (\$20 million) of phase two projects through a combination of additional financial support from other levels of government, existing reserves, capital campaign fundraising, and mortgage financing, if necessary.

Accordingly, the BC SPCA respectfully requests capital funding of \$10 million from the Government of British Columbia as part of the 2017 provincial budget to support completion of phase two projects in the time period outlined above.

A second round of capital funding by the province for the FDSP will not only have lasting benefit for the welfare of animals, but also for the province of British Columbia. Benefits include job creation through construction projects and additional permanent employment positions at new facilities, safer communities, violence prevention programs for youth and an improved ability to assist animal owners in emergency situations such as fires, earthquakes and floods.

A third phase of the FDSP is planned for the period 2020 to 2022 and will seek to replace existing facilities in Salmon Arm and Campbell River; upgrade the existing Cowichan facility; and complete the second stage of construction in Nanaimo, Surrey and Kelowna at a total projected cost of \$8 million. The BC SPCA is not seeking provincial government funding for phase three at this time.

The BC SPCA remains committed to working closely with the Government of British Columbia to address animal welfare concerns across the province and wishes to place on record its profound thanks to the Government for its support and commitment to the FDSP.

A comprehensive funding proposal is attached for consideration by the Government of British Columbia. We thank you in advance for your consideration and look forward to hearing from you.

Questions and/or clarifications can be directed to the Chief Executive Officer, Craig Daniell, at cdaniell@spca.bc.ca or at 604.647.1322.

² 2014 phase I submission requested 50% funding from government.

Section 2.0 - Introduction

2.1 About the BC SPCA

The British Columbia Society for the Prevention of Cruelty to Animals (hereinafter referred to as the “BC SPCA” or the “Society”) is a not-for-profit charitable organization dedicated to protecting and enhancing the quality of life for domestic, farm and wild animals in British Columbia (Registered Charity number BN 11881 9036 RR0001).

The Society enforces the provincial *Prevention of Cruelty to Animals Act* (PCAA) and is the only animal welfare organization in British Columbia with the authority to enforce laws relating to animal cruelty and to prepare cases for the prosecution of individuals who inflict suffering on animals.

Through its forty-one locations across the province, the BC SPCA provides a wide range of services and programs that assist tens of thousands of animals in distress each year.

While the BC SPCA’s primary mandate is to enforce animal cruelty legislation and to ensure that companion, farm and wild animals are treated humanely, the Society also works closely with government and social agencies to help create safe, livable and healthy communities.

Activities include:

- **The Violence Link.** BC SPCA Special Provincial Constables regularly cross-report cases of animal abuse to social service agencies in situations where women and children may also be at risk of domestic violence;
- **Compassionate Boarding.** SPCA branches across B.C. provide thousands of dollars’ worth of free, temporary care for pets of women and families fleeing abusive domestic situations. Many of these individuals report that they would be reluctant to leave abusive situations if options were not available for their pets;
- **Development of School Curricula.** The Society’s humane education staff works closely with teachers across the province to nurture young British Columbians. The BC SPCA has developed a number of curriculum units and education resources, in use across B.C., which support empathy development and compassion;
- **Youth Programs.** BC SPCA educators and branch staff also offer community-based workshops, school clubs, a year-round Kids Club and summer camps for thousands of youth which promote compassion, empathy and messages about anti-bullying and responsible citizenship;
- **Policy Development and Community Safety.** BC SPCA experts serve as key advisors to municipalities and First Nations on bylaws that ensure safe, humane communities. Through direct consultation and the Society’s package of Model Animal Control Bylaws, the BC SPCA helps municipalities and First Nations address a variety of community animal management issues, including dangerous dogs, animal control and pound operations, urban wildlife management, exotic animals, animal licensing and pet overpopulation;

- **Outreach Programs.** The BC SPCA liaises with social service agencies and provides a range of programs to support low-income residents, including pet food banks, free vet clinics for disadvantaged pet guardians, low-cost and free spay/neuter services, and emergency support; and,
- **Animal Welfare Expertise.** The BC SPCA maintains a close association with the University of British Columbia's Animal Welfare Program and other academic institutions in North America to ensure that our staff is able to bring the latest and most comprehensive knowledge of animal welfare to B.C. communities. Our staff includes internationally recognized animal welfare experts on a range of issues impacting B.C. communities, such as human-wildlife conflicts, dangerous exotic animals, oil spill safety, farm animal codes of practice and transport regulations, models to reduce pet overpopulation, collaboration with community organizations and other key issues impacting public health and safety.

2.2 Programs and Services

The BC SPCA provides a wide range of services and programs that benefit both animals and people across British Columbia, including:

- Enforcement of animal cruelty laws through investigations into cases of animal cruelty and neglect;
- Sheltering and adoption of homeless, surrendered and abandoned animals;
- Through its recently established BC Pet Registry, reuniting lost pets with their families;
- Compassionate boarding for individuals in crises, including temporary free boarding of animals owned by women fleeing domestic violence;
- Subsidized and discounted spay neuter and veterinary services for lower income pet owners and families to reduce the overpopulation of companion animals across B.C.;
- Outreach programs for disadvantaged pet guardians, including pet food banks and free monthly vet clinics in communities such as Vancouver's Downtown Eastside;
- Programs for youth, including school programs, summer camps and the BC SPCA Kids Club, teaching empathy development and responsible care of animals;
- Meaningful volunteer opportunities to more than 4,000 community volunteers across the province;
- Cruelty prevention and education programs for adults;
- Emergency medical treatment and after-hours rescue for injured animals;
- Policy and enforcement expertise on animal cruelty legislation, municipal animal control bylaws, dangerous dogs, exotic animal ownership, standards of care for farm animals and dog breeders, and other key issues;

- Protection and programs for farm animals, including the SPCA Certified farm certification and labelling program, to ensure high standards of animal welfare by producers of meat, poultry, eggs and cheese;
- Wildlife rescue, rehabilitation and public education;
- Original research in animal welfare and animal behaviour science; and
- Advice to British Columbians on wildlife related and animal cruelty related questions through its provincial call centre.



2.3 Statistics at a Glance

The BC SPCA employs 551 staff members (full-time, part-time, seasonal and auxiliary) and engages approximately 4,000 volunteers throughout the province. In the past ten years alone, the BC SPCA has created approximately 180 new full and part time jobs across British Columbia, and was recognized as one of BC's Top 20 Dream Employers in 2014 and 2015 by Miles Employment, Vision Critical and the Vancouver Board of Trade.

Our staff includes 31 full-time and another four auxiliary Special Provincial Constables, who are trained and authorized to investigate complaints of animal cruelty and neglect.

DIRECT CARE FOR ANIMALS	2015	2014	2013
Total number of animals assisted across B.C. (including community outreach programs)	43,249	42,244	41,691
Injured, abused, homeless and surrendered animals cared for in BC SPCA branches	27,187	25,942	24,636
Lost pets reunited with their guardians	3,949	3,829	3,742
Animals adopted into loving homes	15,811	15,335	14,259
Animals transported through BC SPCA Drive for Lives program	4,994	4,739	3,285
Injured and orphaned wildlife rescued at Wild ARC, the BC SPCA wildlife rehabilitation centre in Metchosin	2,937	2,508	2,298

CALLS TO PROVINCIAL CALL CENTRE	2015	2014
Total calls	25,923	21,746
Reports of animal cruelty	49%	52%
Assistance with wildlife issues	25%	27%
General enquiries	21%	21%
Pet Registry enquiries	5%	N/A

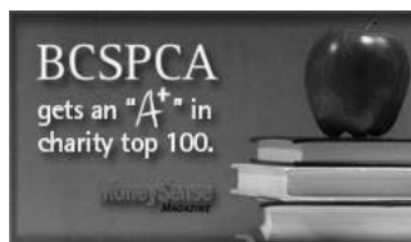
CRUELTY INVESTIGATIONS ACTIVITIES	2015	2014	2013
Number of animal cruelty complaints investigated	10,205	8,848	7,839
Animals removed from their owners	1,110	1,276	1,340
Number of warrants executed under the Criminal Code of Canada, the Prevention of Cruelty to Animals Act or the Offense Act	148	160	102
Charges of animal cruelty and neglect submitted to Crown Counsel	53	53	23

ONLINE SITES	2015	2014	2013
Website visitors (spca.bc.ca)	4,277,286	2,910,409	2,544,235
Facebook fans	59,535	41,211	21,405
Twitter followers	21,287	16,814	12,163
Live Kitty Cam views	49,200	62,000	57,000
Anim@ls e-newsletter subscribers	88,535	82,928	84,029

2.4 A Commitment to Transparency and Accountability

Consistent with its Guiding Principles, the BC SPCA is committed to upholding the highest standards of transparency and accountability across the organization. The BC SPCA is currently the only SPCA in Canada and one of a small number of charities in British Columbia that has received accreditation by the Imagine Canada Standards Program, designed to help charities demonstrate excellence and strengthen public confidence in Canada's charitable and non-profit sector.

In addition, the BC SPCA has consistently received an "A" rating or better from MoneySense magazine in its annual rating of Canada's 100 top charities. Moreover, Charity Intelligence³ chose the BC SPCA as one of its top charities in 2012 and 2014.



The BC SPCA is in good standing with WorkSafeBC and is committed to ensuring there is a healthy and safe working and learning environment at our worksites. The Society is committed to:

- The maintenance of a safe and healthy environment for all staff, volunteers, and the general public as a priority;
- Meeting or exceeding current health and safety regulations or legislation; and,

³ <http://www.charityintelligence.ca/top-picks-2012>

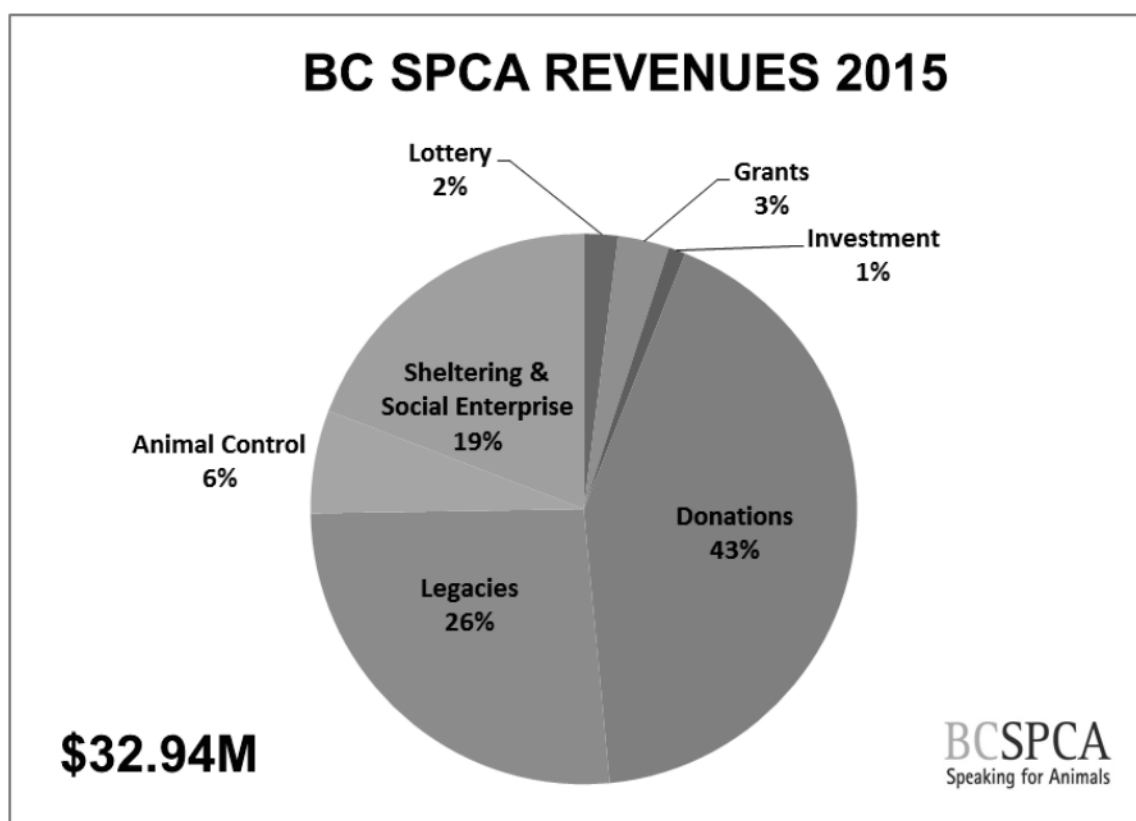
- Implementing up-to-date health and safety practices and being vigilant in researching new health and safety practices to maintain a leadership role within our community.

The Society also publishes its audited financial statements, annual report, annual charitable tax return, list of Directors, Constitution and Bylaws and other governance documents on its website.

2.5 Growth and Financial Stability

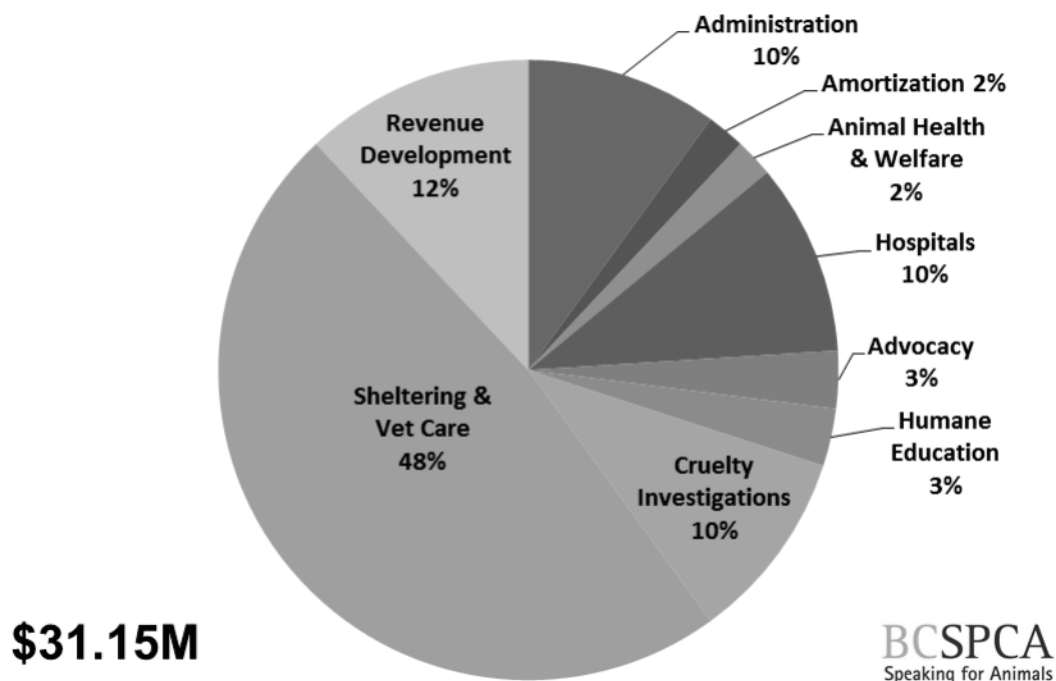
The annual operating budget of the BC SPCA is currently \$33 million and has been growing by approximately 4% - 5% each year.

The BC SPCA is reliant on public donations to support its annual operating budget. Public donations from approximately 80,000 supporters, foundations and corporations account for approximately 70% of annual revenue, while fee-for-service contracts and animal related services account for the remaining 30% of revenue. In 2015, the Government of British Columbia provided \$5 million of capital funding to support facility replacement across the province.



59% of all BC SPCA expenditures are directed to the operation of its various animal shelters and veterinary clinics. Cruelty investigations accounts for almost 10% of expenditures, while prevention activities such as humane education and animal welfare initiatives account for approximately 8% of expenditures. Administration costs are 10%, amortization 2% and revenue development costs account for approximately 12% each year.

BC SPCA PROGRAM EXPENDITURES 2015



The BC SPCA works to a balanced budget each year. The Society annually calculates anticipated revenue for the upcoming year and then ensures all expenditures meet such targets. Thanks to our generous supporters, the Society has consistently reported an operating surplus in each of the past 10 years, with the exception of one year. The operating deficit of \$149K in 2011 was as a direct result of the Whistler-area sled dog investigation, one of the largest animal cruelty investigations in Canada. In some years, operating surpluses have been larger than projected as a result of the sale of assets and/or unexpected receipt of larger legacy gifts. These surpluses have been earmarked for future capital purposes.

This excellent financial performance over the past decade was achieved at the same time as the Society's annual operating expenses grew from \$19.5 million in 2005 to \$31 million in 2015 as a result of expanded programming. The growth in operating expenses was matched by a similar growth in revenue due largely to the increase in donor support from the community.

As at December 31, 2015 the BC SPCA reported total assets of \$51.9 million, of which almost \$14.5 million was classified as property, buildings and equipment. This asset base has consistently grown since 2003 when total assets were reported at \$16.1 million. The growth in assets is due in part to the construction of a number of new community animal centres throughout the province, including new community animal centres in Nanaimo and the addition of large animal recovery and adoption centres in Kelowna and Surrey.

Attached as Appendix "A" are the audited financial statements of the BC SPCA for period ending December 31, 2015.

Section 3.0 - The BC SPCA Facilities Development and Services Plan (FDSP)

The BC SPCA currently operates 41 facilities across the province of British Columbia. A complete list of such facilities is attached as Appendix "B". As highlighted in Appendix B, a significant number of BC SPCA facilities are old with many requiring urgent replacement. By way of example, Vancouver, the largest and busiest animal care facility in the province, is 57 years in age.

In 2013, the Society initiated a comprehensive core review of its facilities, leading the Board of Directors to approve a Facilities Development and Services Plan (FDSP) which provided approval, in principle, for the Society to undertake a total of ten new capital projects over an eight-year period to 2022.

The projects included:

- On central Vancouver Island (Nanaimo), construction of an approximately 7,500 square foot Community Animal Centre⁴ and a 3,000 square foot large animal seizure and adoption barn built in two phases to replace the existing facility at a projected total cost of \$3.81 million;
- In the West Kootenay, construction of a 4,300 square foot Community Animal Centre to serve the West Kootenay and Boundary region at a projected total cost of \$1.95 million;
- In Surrey, construction in stages of a large animal seizure barn, educational facility, adoption centre, cat intake and seizure facility, and controlled alien species holding facility at an amended projected total cost of \$3.7 million⁵;
- In Vancouver construction of a 40,000 square foot Community Animal Centre, Veterinary Hospital and Provincial Office to replace the existing facilities at a projected total cost of \$20.5 million⁶;
- In the Thompson region (Kamloops), construction of an approximately 10,000 square foot Community Animal Centre and spay neuter clinic at a projected total cost of \$4.75 million;
- In North Cariboo (Prince George), construction of an approximately 7,500 square foot Community Animal Centre and large animal seizure and adoption barn at a total cost of \$4.2 million⁷;

⁴ **Community Animal Centre:** A large BC SPCA facility that acts as the focus for all animal events in the community, not only through admission and adoption of animals, but also through provision of community animal services such as dog training, public forums, etc. Community animal centers have a multipurpose room that allows such services to be provided.

⁵ 2014 projected cost \$6.4 million

⁶ Note: Project scope amended due to critical need to include replacement of BC SPCA Provincial Office in scope of work

⁷ 2014 initial projection was \$6.1 million

- In the Fraser Valley, construction of a 10,000 square foot Community Animal Centre and 3,000 square foot Spay Neuter Clinic to replace the existing Abbotsford and Chilliwack shelters at a total projected cost of \$5.25 million⁸;
- In the Shuswap (Salmon Arm), construction of a 4,000 square foot Community Animal Centre at a projected total cost of \$2.6 million;
- In Kelowna, construction of a large animal seizure and adoption barn, companion animal centre expansion and upgrades, and addition of a wildlife centre at a projected total cost of \$1.5 million⁹;
- In the Peace region (Dawson Creek), construction of an approximately 4,500 square foot Community Animal Centre at a projected total cost of \$2.85 million.

A follow-up review of facilities undertaken in 2015 identified the need to include two additional facilities to the Plan, namely those in Campbell River and Cowichan. At the time of the original 2013 review, the facility in Campbell River was not considered due to it being owned by the municipal government, while in Cowichan, the need for structural repairs and enhancements was not identified. The revised Plan now identifies the need for an approximately 3,500 square foot community animal centre in Campbell River at a projected total cost of \$1.95 million and structural repairs and enhancements to the facility in Cowichan at a projected total cost of \$600k.

Total anticipated cost of implementing the Facilities Development and Services Plan is projected at \$53.9¹⁰ million.

A detailed analysis and status report of each facility is included later in this report.

3.1 The Cost of Constructing Community Animal Centres and BC SPCA Expertise in the Area

As mentioned above, the projected cost of constructing these facilities has been calculated at \$53.9 million, based on an average \$450 per square footage cost. The \$450 per square foot includes both hard (construction) and soft (architectural, engineering, landscaping, equipment, etc.) costs and is based on actual costs incurred in constructing the three most recent capital projects undertaken by the BC SPCA, namely the Powell River Community Animal Centre in 2013, the Maple Ridge Community Animal Centre in 2010, and the recently completed Nanaimo and District Community Animal Centre.

The \$450 per square foot cost for construction results in animal centres that fully meet the highest level of animal health and welfare, meet high environmental and efficiency standards and lead to long term operational savings. Such facilities include:

⁸ 2014 projected cost was \$7 million

⁹ 2014 initial projection was \$2.3 million

¹⁰ 2014 projected cost was \$50.2 million

- A ventilation system that permits a minimum 10 full air exchanges per hour;
- Impermeable flooring and walls in animal areas;
- Full spectrum lighting in animal isolation rooms;
- A design that promotes proper sanitation;
- Noise abatement measures throughout the building;
- The installation of energy efficiencies throughout the building;
- Facilities that allow for separation between different species of animals;
- Access to covered outside area for all animals;
- A friendly welcoming environment for members of the public; and
- Multi-purpose rooms that promote a wide range of educational initiatives.

Having completed a number of such projects on time and on budget in the past few years, the BC SPCA has not only developed significant technical expertise in-house but has also built strong associations with the architectural and construction industry and secured significant in-kind donations, making it confident that there would be no cost over runs on such projects.

3.2 Phased Approach to Implementing the FDSP

To successfully implement the largest capital project undertaken in the history of the BC SPCA, the FDSP has been phased over three periods to 2022. In addition, some projects have also been phased over the eight-year period. The first phase, initiated in 2014 and scheduled for completion in 2017, will see a total of six projects undertaken across British Columbia at a projected cost of \$16.0 million.

The first phase of the FDSP (2014 to April 2017) covers facility replacement or upgrades at six facilities (Nanaimo; Kelowna; Surrey; Kamloops; Castlegar; and Dawson Creek) at a total projected cost of \$15.9 million. The Government of British Columbia has very generously provided \$5 million in capital funding for phase one of the FDSP. Through additional support from local governments, foundations and private donors, the BC SPCA will have secured the remaining \$10.9 million required to complete these projects. Projects include:

- Construction of a new Nanaimo and District Community Animal Centre at a total cost of \$3.56 million. The project was completed with an allocation of \$1.3 million in provincial government funding;
- Construction of a large animal recovery and adoption barn in Kelowna at a total cost of \$259k, with \$100k of provincial government funding allocated to complete the project;

- Construction of a large animal recovery and adoption barn, cat seizure facility and education and adoption centre in Surrey at a total cost of \$2.6 million. \$400k in provincial government funding was allocated to complete this project;
- Construction slated for early 2017 of a new Kamloops and District Community Animal Centre and Spay Neuter Clinic to replace existing facilities at a projected cost of \$4.75 million with \$1.5 million of provincial government funding provisionally allocated to the project;
- Construction slated for the spring of 2017 of a new West Kootenay Community Animal Centre in Castlegar to replace the Trail animal shelter at a projected cost of \$1.95 million, with \$900k of provincial government funding allocated to this project; and
- Construction slated for the fall of 2016 of a new South Peace Community Animal Centre to replace the existing animal shelter at a total projected cost of \$2.85 million, with \$900k in provincial government funding tentatively allocated to the project.

Phase two of the FDSP, planning for which is already underway, covers the four-year period from 2017 to 2020 and involves replacement of its three largest and busiest facilities - Vancouver, the Fraser Valley and Prince George - at a total projected cost of \$30 million. The projects include:

- Construction of a new flagship BC SPCA Campus in Vancouver, comprising Community Animal Centre, Veterinary Hospital and Provincial Office to replace the existing 57 year old facility at a total projected cost of \$20.5 million (assumes replacement at existing location);
- Construction of a new Prince George Community Animal Centre to replace the existing animal shelter at a total projected cost of \$4.2 million; and
- Construction of a new Fraser Valley Community Animal Centre to replace the facilities located in Abbotsford and Chilliwack at a total projected cost of \$5.25 million.

The third phase of the Plan, slated for 2019 to 2022, will seek to replace the existing facilities in Salmon Arm and Campbell River and complete the second stage of construction in Nanaimo, Surrey and Kelowna at a total projected cost of \$8 million. Project details include:

- Construction of a new Shuswap Community Animal Centre to replace the existing animal shelter at a total projected cost of \$2.6 million;
- Construction of a new Campbell River Community Animal Centre to replace the existing animal adoption centre at a total projected cost of \$1.95 million;
- Construction of a large animal recovery and adoption barn in Nanaimo at a projected cost of \$250k;
- Facility upgrades to the Kelowna Community Animal Centre at a projected cost of \$1.5 million;

- Facility upgrades in Surrey to temporarily house seized controlled alien species at a projected cost of \$1.1 million; and
- Facility upgrades to the Cowichan animal shelter at a projected cost of \$600k.

Phase 1: 2014 - 2017 Total Capital Costs: \$15.9M BC SPCA contribution: \$10.1M Government of British Columbia contribution: \$5.0M Local government contribution¹¹: \$0.8M			
Location	Completion	Projected Cost (\$M)	Provincial Government Funding (\$M)
Nanaimo (phase 1)	2016	\$3.56	\$1.3
Surrey (phase 1)	2016	\$2.6	\$0.4
West Kootenay	2017	\$1.9	\$0.9
Kelowna (phase 1)	2015	\$0.25	\$0.1
Kamloops	2017	\$4.75	\$1.5
Dawson Creek	2017	\$2.85	\$0.8
Phase 2: 2017-2020 Total Projected Capital Costs: \$30 million (BC SPCA Fundraising: \$20M + Request of Provincial Government: \$10.0M)			
Location	Estimated Completion Date	Projected Cost	
Vancouver	2019	\$20.5 million ¹²	
North Cariboo Region (Prince George)	2020	\$4.2 million	
Fraser Valley	2020	\$5.25 million	

¹¹ Estimated contribution

¹² Assumes redevelopment on current SPCA site

Phase 3: 2019-2022 Total Capital Costs: \$8M (BC SPCA Fundraising: \$5.1M + Request of Provincial Government: \$2.9M)		
Location	Estimated Completion Date	Projected Cost
Nanaimo (phase 2)	2019	\$0.25 million
Shuswap (Salmon Arm)	2021	\$2.6 million
Kelowna	2019	\$1.5 million
Surrey	2019	\$1.1 million
Campbell River	2021	\$1.95 million
Cowichan	2021	\$0.6 million
The total projected cost of the Facilities Development and Services Plan is \$53.9 million.		

3.3 Financial Commitment to the Project by the BC SPCA

With a successful track record of completing capital projects, the Society is confident that, subject to a continued partnership with the Government of British Columbia, it can successfully execute all three phases of the Plan on time and on budget, ensuring the continuation and expansion of animal services as well as a number of other significant benefits for communities, including job creation through construction projects and additional permanent employment positions at these newly constructed facilities.

The BC SPCA is fully committed to raising two-thirds of the total cost of this project (\$35.9 million) through a combination of existing funding designated for capital purposes, capital campaign fundraising, local government contributions and through mortgage financing if necessary.

3.4 Financial Commitment of the Government of British Columbia and Funding Request for Phase Two

The Government of British Columbia has already very generously contributed \$5 million in capital funding for phase one of the FDSP, which has allowed the Society to move forward with six projects identified in the Plan.

The \$5 million in Provincial Government capital funding has been allocated as follows:

Nanaimo	\$1.3 million
Kelowna	\$0.1 million
Surrey	\$0.4 million
Kamloops	\$1.5 million
Dawson Creek	\$0.8 million
Castlegar	\$0.9 million

The BC SPCA respectfully requests funding of \$10 million from the Government of British Columbia as part of the 2017 budget to complete phase two of the Plan.

The BC SPCA would be pleased to explore different opportunities to recognize the contributions of the Government of British Columbia in supporting the Facilities Development and Services Plan.

Without support from the provincial government, the BC SPCA and its donors will not be able to complete its Plan within the time period allocated. This in turn will dramatically and adversely impact the future of other facilities that are not included in the Plan and force a re-evaluation of the number of facilities that the Society is able to operate. In all likelihood, the BC SPCA will be forced to reduce the number of facilities it operates across the province, leading to a reduction in services and job loss in some communities.

To enable the BC SPCA to fully complete the FDSP, a final request for capital support in the amount of \$2.9 million will be made to the provincial government in fiscal 2019 to enable the BC SPCA to fully complete the FDSP, which will bring the total request of the provincial government to \$17.9 million¹³.

3.5 The Case for Support for Further Funding by the Government of British Columbia

Capital funding by the Province for the Facilities Development and Services Plan will not only have lasting benefit for the welfare of animals, but also for the Province of British Columbia and its citizens.

Upon completion, the Plan will:

- Have created numerous temporary construction jobs all across the province over the next seven years¹⁴;

¹³ 2014 submission to Government was for funding of \$25.2 million

¹⁴ A total of 113 contractors and sub-contractors were engaged on the recently completed Nanaimo and District Community Animal Centre

- Create approximately 34 additional permanent full-time and part-time animal care positions across the province¹⁵;
- Create modern, appropriately sized community animal centres for companion animals at numerous locations across the province, which in turn will allow an increase in animal adoptions at the centres and the transfer of homeless and unwanted animals from smaller rural communities to larger urban facilities;
- Reduce the number of unwanted animals in communities through the provision of spay neuter services at high volume sterilization clinics in some communities;
- Establish four large animal seizure barns at central locations across the province for the temporary housing of livestock and horses seized as a result of an animal cruelty investigation;
- Provide for the temporary housing of livestock and other large animals during floods, fires and other emergencies;
- Allow for the creation of a number of temporary triage centres for injured wildlife en route to licensed wildlife rehabilitation centres;
- Allow some facilities to act as a depository of equipment and supplies for professional oiled response that could be used in the event of an oil spill across the province;
- Provide for the temporary housing of Controlled Alien Species seized by conservation officers across the province;
- Demonstrate support for animal welfare for the entire province of British Columbia;
- Increase humane education training for youth across the province, resulting in empathy skills that promote learning, self-esteem and the prevention of violence, such as bullying, animal cruelty and family violence;
- Contribute to safe, humane, liveable communities through BC SPCA collaboration and cross-reporting with other law enforcement authorities, social service agencies and health care providers on issues including family violence, mental health and criminal activity;
- Increase compassionate services for women fleeing domestic violence. Studies in Calgary and Ontario show that more than 50% of women delay leaving an abusive relationship out of concern for their pets, who are also often victims of family violence. BC SPCA branches across the province will open their doors to assist these women by providing temporary free pet boarding/kennelling services, collaborating with women's shelters to provide pet care and helping women find new homes for animals they can no longer keep;

¹⁵ Assumes an increase of 20% in staffing at redeveloped facilities as based on actual staffing increases that occurred in Penticton; Maple Ridge and Powell River

- Create more opportunities for volunteerism and skills training through summer student and internship placements in communities across B.C. The BC SPCA also provides work experience opportunities and volunteer roles that benefit seniors, at-risk youth and persons with disabilities and mental health issues; and
- Increase services for low-income pet guardians seeking veterinary care for their pets, such as free or low-cost spay and neuter surgeries, vaccinations and emergency care.

3.6 Media Interest and Publicity of Initial Government Funding

The initial round of funding has provided great opportunities to engage with the media. We have tracked 36 news stories in print, radio, TV and online that specifically reference the \$5 million in funding received in the 2015 Provincial budget. The Society has celebrated five events related to the FDSP which have garnered approximately seven media stories each: the initial announcement of provincial government funding; the ground-breaking and grand opening of a new Adoption & Recovery Barn in Kelowna, which were attended by the Minister of Agriculture; and the ground-breaking and grand opening of a new Community Animal Centre in Nanaimo, which were attended by the Minister of Social Development and Social Innovation. In addition to traditional media hits, we have also had approximately 5068 likes, shares and comments on our Provincial BC SPCA Facebook page specifically related to government funding posts from our supporter base:



Through platforms like Facebook, Twitter and Instagram we are able to highlight the work our organization has been able to achieve due to the funding provided by the government. As well, we have given special recognition to the government on webpages specific to capital campaigns for FDSP projects. Government representatives have been invited to participate in our related events including speaking, breaking ground and ribbon cuttings. Signage and inclusion in printed event material has been made recognizing support at all FDSP events. Permanent signage recognizing support has been installed at FDSP facilities. We have also utilized more traditional mediums to inform our supporters of the impact of those government dollars. Our biannual magazine called *AnimalSense* is distributed to 60,000 supporters across BC twice a year, and has featured several stories about the use of government funds in the construction of our new facilities. We also circulate a monthly e-newsletter with a distribution list of 80,000, which keeps our supporters up to date with the BC SPCA's progress and programs. Lastly, we have recognized government support in our Impact Report, which is tailored to our monthly donors and major donors.

Section 4.0 - Phase One Projects (Completed or in Progress)

4.1 Nanaimo (Phase One Completed)

A new 7,500 square foot Community Animal Centre located at 154 Westwood Road in Nanaimo was officially opened to the public by Michelle Stillwell, Minister of Social Development and Social Innovation, on June 17, 2016.

The new Centre, which complies with the Canadian Standards of Care in Animal Shelters¹⁶, was built at a total cost of \$3.56 million.

\$1.3 million of provincial government funding was allocated to this particular project. In addition to waiving development costs of \$369k, the City of Nanaimo contributed \$150k to the capital project.

The new Nanaimo and District Community Animal Centre incorporates modern animal welfare designs such as:

- Shared dog "apartments" to encourage natural movement and socialization;
- Communal indoor-outdoor areas for cats to encourage play;
- Designated areas for temperament and behaviour assessments; and
- Isolation rooms for sick and injured animals.

It also features state-of-the-art heating, air conditioning, and ventilation systems, lighting, noise, and odour control and the most suitable finished surfaces that are easy to clean.

This facility - one that meets the needs of the animals and creates a welcoming place for potential adopters - will make a tremendous impact on how quickly animals find their new families. More adoptions and a shorter length of stay means less stress for the animals and an increase in the amount of animals that the organization will be able to take in and care for.

The new centre will be a hub for transferring neglected and abused animals from other parts of Vancouver Island and beyond between BC SPCA shelters. This network is critical to ensuring animals have the greatest chance for adoption and access to specialized care if required. It will also be a centralized location for housing animals rescued by our cruelty investigators.

The role of the Nanaimo & District Community Animal Centre will go far beyond animal protection and sheltering, offering assistance to the most vulnerable of our citizens as well.

Programs at our new facility include:

- **Assisting victims of domestic violence.** In conjunction with Haven Society, we provide shelter to the beloved pets of people victimized by domestic abuse and who have had to

¹⁶ <http://www.sheltervet.org/about/shelter-standards/>

leave their homes. The service enables these women to concentrate on their recovery without worrying about the safety of their pet.

- **Help for at risk youths and adults.** We partner with The John Howard Society of Canada and their restorative justice program to offer volunteer opportunities to at risk youth and adults, giving them alternatives to custodial sentences.
- **Compassionate boarding.** We offer complimentary emergency boarding to Nanaimo residents who find themselves experiencing a personal or health crisis. We work closely with Social Services and the Ministry of Children and Family Development to offer solutions to help support pet guardians and families during difficult times.
- **SNIP Program.** Free and discounted spay neuter assistance is offered to low-income Nanaimo cat guardians. Made possible with the generous support of “Marjorie’s Fund” and The City of Nanaimo, the Spay/Neuter Initiative Program (SNIP) fixes hundreds of cats annually, fighting the pet overpopulation crisis and preventing the future suffering of unwanted animals. With the support of local veterinarians, the Nanaimo SPCA also offers discounted services to low-income dog guardians.
- **Special volunteer opportunities.** We offer volunteer opportunities to residents of Edgewood recovery and treatment centre, helping recovering addicts to begin to build and structure a life which supports their return to wellness.
- **Community resource.** Offering space for BC SPCA children’s camps, classes, training, education, meetings, and other community uses.



Minister Stilwell and Craig Daniell at the ground-breaking of the new BC SPCA Nanaimo Community Animal Centre on September 1, 2015



New BC SPCA Nanaimo Community Animal Centre on May 11, 2016

4.2 Surrey (Phase One Completed)

The fast pace of population growth, coupled with its urban and rural characteristics, makes Surrey one of the largest and busiest branches in the BC SPCA network. Over the past five years, the request for BC SPCA services and number of animal cruelty complaints involving both companion and farm animals in the Surrey and Fraser Valley region has consistently grown and the Society has not had the capacity to meet this need.

In response, the BC SPCA purchased a 5.5-acre parcel of land on 168th Street in the Cloverdale area of Surrey in 2011 for the purpose of expanding the wide range of animal related services it provides to the community. A ten-year capital plan was subsequently developed for the property with a particular emphasis placed on the housing of seized animals and the expansion of humane education initiatives.

Phase one of the plan, which was completed in early 2016, included:

- Construction of a ten stall multi-purpose large animal recovery and adoption barn to temporarily house large animals seized as a result of a cruelty investigation. The multi-purpose nature of the facility means that it can be easily adapted to also house smaller species of farm animals;
- Construction of two large outdoor paddocks and loafing sheds to allow for large seized animals to receive the exercise and rehabilitation needed to fully recover from distress;
- Facilities to temporarily house small flocks of seized fowl and ducks;

- Construction of a cat intake facility with indoor and outdoor access, built to the Canadian Standards of Care in Animal Shelters, that can temporarily house as many as 70 cats seized as a result of an animal cruelty investigation;
- Construction of a multi-purpose education room enabling the Society to dramatically expand its educational programming for youth and introduce educational programming for adults;
- Construction of an adoption centre for companion animals; and
- Development of an off-leash dog park that will support much needed obedience training programs to be initiated from the facility

Now completed, the Cloverdale facility can:

- Serve as the primary companion and large animal seizure facility in the Lower Mainland and Fraser Valley region;
- Allow for longer term housing and rehabilitation of injured and abused large animals, thereby avoiding the necessity of costlier private boarding facilities;
- Have the capacity to serve as a storage area for wildlife equipment and supplies necessary for professional oiled wildlife responders to attend oil spills in the region;
- Assist the BC SPCA's Drive for Lives program, allowing larger numbers of companion animals to be transferred from rural to urban communities where they have a better opportunity for adoption;
- Allow for the dramatic expansion of youth education programming in the region;
- Act as a staging area for the temporary housing of companion animals and livestock during emergencies; and
- Provide greater opportunities for the adoption of companion animals into the Surrey community.

Phase one of the projected has been completed at a total cost of \$2.6 million, with \$400k of provincial government funding allocated to this project. The cost breakdown is as follows:

Land acquisition	\$ 1.5 million
Large Animal Recovery & Adoption Barn	\$ 0.5 million
Adoption centre and education centre	\$ 0.3 million
Cat intake and seizure facility	\$ 0.3 million



Minister Letnick with Special Provincial Constables at Surrey large animal recovery and adoption barn



Surrey Cat Intake Facility

4.3 Kelowna (Phase One Completed)

On October 14, 2015 Minister of Agriculture, Norm Letnick, officially opened the BC SPCA's new Recovery & Adoption Barn in Kelowna, which will temporarily house horses and farm animals rescued from abusive or neglectful situations in the Okanagan region. The new 2,500-square-foot facility, located adjacent to the existing BC SPCA Kelowna shelter at 3785 Casorso Road, includes six indoor-outdoor stalls, a tack room and hay storage area.

The new barn in Kelowna, built at a cost of \$259k and with a financial contribution of \$100k from the Government of British Columbia, is the second of four BC SPCA large animal barns that are planned across the province (Surrey, Nanaimo and Prince George being the other locations).

The new facility was urgently needed to provide temporary housing for injured and abused farm animals in the region. Farm animals represent a significant focus of the BC SPCA's rescue and advocacy work. Last year we took 117 horses and 143 cattle into care through cruelty investigations and spent in excess of \$200k for boarding, hauling and other costs associated with their care. Having a facility where the Society can care for these animals itself will make a tremendous difference in terms of cost efficiencies and in the direct care provided.



Minister Letnick participating in the ribbon cutting ceremony at the BC SPCA Recovery & Adoption Barn on October 14, 2015



BC SPCA Kelowna Recovery and Adoption Barn

4.4 Kamloops (In Progress)

The BC SPCA Kamloops branch currently operates an animal shelter at 1211 8th street in Kamloops and a leasehold high volume spay neuter clinic at 391A Tranquille Road in Kamloops.

The animal shelter is 29 years old, is 4,000 square feet in size and is in relatively poor condition. The facility was not originally constructed as an animal shelter, making it difficult to prevent the spread of disease and provide good animal welfare. Moreover, there is a lack of appropriate isolation facilities, which has resulted in fairly regular disease outbreaks in the shelter such as ringworm. The facility is also too small to house the large number of animals received on an annual basis.

In December 2015, the Society purchased a 2.2-acre parcel of land at 2815 Tranquille Road, immediately adjacent to the Kamloops airport, for the purpose of constructing a community animal centre and spay neuter clinic to replace the existing facilities. The City of Kamloops has subsequently approved a rezoning of the property to allow for the said construction.

An architectural firm has been retained to provide architectural and engineering services for the facility, which is projected to be approximately 10,000 square feet in size (7,500 for a community animal centre and 2,500 for a spay new clinic) at a total projected cost of \$4.75 million.

The Society has allocated \$1.5 million of the provincial government funding for the Kamloops project. A public capital campaign is already underway with approximately 90% of funding already secured. If required, the Society will draw from its unrestricted reserves to cover any shortfall.

Survey, geotechnical and storm-water studies have been completed. A ground-breaking ceremony is planned for the fall of 2016 with actual construction commencing shortly thereafter. Once the new facility is complete in late 2017, the existing Kamloops shelter and Spay Neuter Clinic will be closed.

Once completed, the new facility will:

- Allow for a much needed expansion of animal care and welfare services throughout the Thompson region;
- Allow for the expansion of youth education programming, such as summer camp programs, with an emphasis on empathy development and responsible animal care;
- With additional support, become a temporary staging area for companion animals and livestock during emergencies;
- Create opportunities for the Society to offer much sought after programs such as obedience training and pet first aid courses in the region;
- Allow for greater partnerships between the BC SPCA and women's shelters in the region, allowing women fleeing domestic violence to house their animals at the Centre; and
- Significantly expand the number of volunteer opportunities at the Centre.



Concept of new Kamloops & District Community Animal Centre

4.5 Castlegar (In Progress)

The Trail and District branch is located at 7700 Highway 3B in Trail and serves the communities of Grand Forks, Rossland, Castlegar, Montrose, Fruitvale and Trail.

The current building, which is 33 years old and 2,800 square feet in size, is in extremely poor condition and must be replaced as it fails to meet animal welfare standards prescribed by the ASV guidelines and is unacceptable from a human health and safety perspective.

In the summer of 2015, the BC SPCA reached an agreement with the City of Castlegar whereby the City would donate a 1.05-acre parcel of land located at the intersection of Highway 3 and 3A to the BC SPCA, subject to the BC SPCA constructing a community animal centre on the said

property. The Society is currently working with the City to secure title to the project before commencing construction.

In the interim, an architectural firm has been retained to provide architectural and engineering services for the facility, which is projected to be approximately 4,370 square foot community animal centre at a total projected cost of \$1.95 million (includes value of property donation).

A ground-breaking ceremony is planned for the fall of 2016, with actual construction commencing in early 2017 and a project completion date before the end of 2017. Once the new facility is complete, the facility in Trail will be closed.

The Society has allocated \$0.9 million of the provincial government funding for the Castlegar project. A public capital campaign will be launched in the summer, although approximately 80% of funding is already secured. If required, the Society will draw from its unrestricted reserves or borrow to cover any shortfall in capital funding.

Once constructed, the new facility will:

- Serve as the primary companion animal seizure centre for the region;
- Provide temporary shelter for companion animals in distress throughout the region;
- Act as a transfer hub for the entire Kootenay region, allowing large numbers of adoptable animals to be transferred from areas with smaller populations to areas with larger populations, thereby significantly reducing the threat of euthanasia of adoptable animals; and
- Permit the introduction of much needed and requested youth humane education programming in the region.



Current BC SPCA Trail Regional Branch



Aerial photograph depicting land for proposed Castlegar facility

4.6 Dawson Creek (In Progress)

The South Peace branch of the BC SPCA is located at 637 114th street in Dawson Creek and serves the communities of Dawson Creek, Peace Coupe, Tumbler Ridge, Chetwynd, Gwillam, and Ground Birch.

The current facility, which is 38 years old and 1,560 square feet in size, is in poor condition, too small and must be replaced as it fails to meet animal welfare standards prescribed by the Canadian Standards of Care in Animal Shelters and is unacceptable from a human health and safety perspective.

In the summer of 2015, the BC SPCA reached agreement with the City of Dawson Creek whereby the City would donate an approximately 5-acre parcel of land located at 11418 Third Street to the BC SPCA, subject to the BC SPCA constructing a community animal centre on the said property. The Society is currently working with the City to secure title to the project before commencing construction, although geotechnical work has been completed.

In the interim, an architectural firm has been retained to provide architectural and engineering services for the facility, which is projected to be an approximately 5,000 square foot community animal centre at a total projected cost of \$2.85 million (includes value of property donation).

A ground-breaking ceremony is planned for the fall of 2016, with actual construction commencing in early 2017 and a project completion date by the end of 2017. Once the new facility is complete, the existing facility in Dawson Creek will be closed, with proceeds of the sale being directed to the building fund.

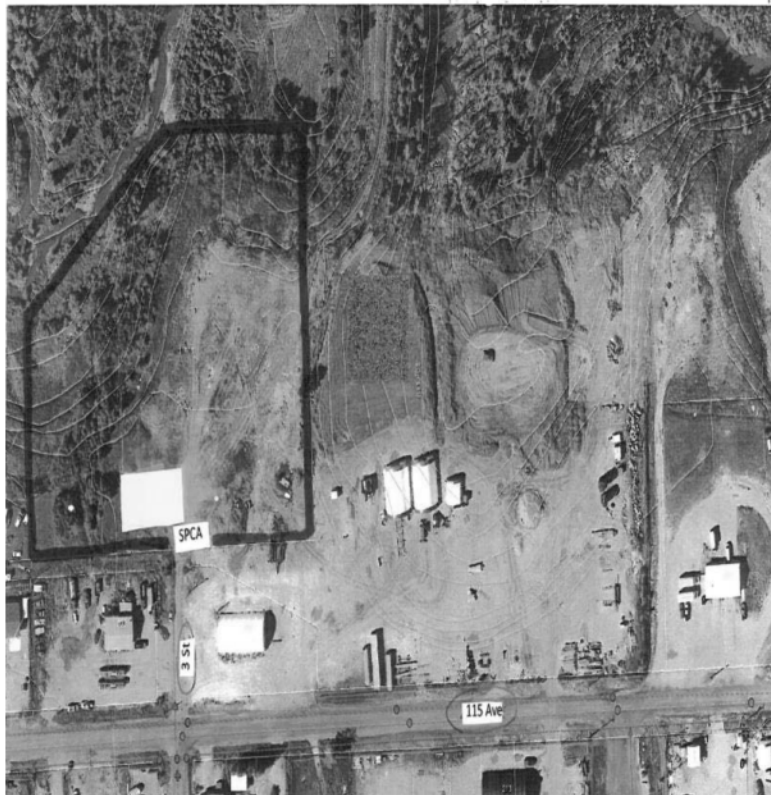
The Society has allocated \$0.8 million of the provincial government funding for the Dawson Creek project. A public capital campaign will be launched in the late summer, although approximately 90% of funding is already secured. If required, the Society will draw from its unrestricted reserves to cover any shortfall in capital funding.

Once completed, the new facility will:

- Provide animal control services to the South Peace region;
- Serve as the primary companion seizure centre for the region;
- Provide temporary shelter for companion animals in distress throughout the region;
- Act as a transfer hub for the Peace region, allowing adoptable animals to be transferred from the region to areas with larger populations, thereby significantly reducing the threat of euthanasia of adoptable animals; and
- Permit the introduction of much needed and requested youth humane education programming in the region.



Current BC SPCA South Peace Branch



Aerial photograph of surveyed land for proposed new facility in Dawson Creek

Section 5.0 - Phase Two Projects (Provincial Government Funding Request)

5.1 Vancouver

The new flagship BC SPCA Campus in Vancouver will be a complex comprised of the Community Animal Centre, Veterinary Hospital and Provincial Office. The Society's Vancouver shelter and Veterinary Hospital are located at 1205 East 7th Avenue in Vancouver, immediately adjacent to the Society's Provincial Office, which is located at 1245 East 7th Avenue in Vancouver.

The BC SPCA has full title to both the 1205 and 1245 East 7th properties. Both the shelter building (57 years old) and the Hospital building (40 years old) are in poor condition and not large or modern enough to meet the needs of the community in Metro Vancouver. Because of their age and size, neither facility can provide a full range of services to the public and accordingly need to be replaced. The Provincial Office building is 37 years old and in adequate condition, but is too small to accommodate the number of services provided from the facility, including cruelty investigations; education initiatives; animal health and welfare; wildlife and farm programs, in addition to the overall management and administration services it provides.

The Vancouver facility houses the highest number of animals on an annual basis in the province and is often the go-to animal facility to care for companion animals seized as a result of a cruelty

investigation, such as the Langley “puppy-mill” investigation in early 2016. Vancouver-based BC SPCA special constables respond to more than 600 cruelty calls each year, necessitating the regular seizure and rescue of a large number of animals. This large call volume reinforces the need for such a facility.

The Vancouver Hospital is a full-service public veterinary hospital that, amongst other things, provides a full range of reduced cost or free veterinary services to low income pet guardians, including residents of the Downtown Eastside and the many feral cat groups in the region. The growth in population in the city itself and in the region as a whole is placing tremendous pressure on both the hospital and the shelter and because of the facilities’ age and conditions, the Society has reached a physical capacity and cannot accommodate new clients seeking reduced cost or free services.

Due to their age and condition, coupled with the fact that all three facilities do not have the physical space requirements to meet existing needs of the community and the province, it is imperative that the Society replace the shelter, hospital and provincial office. This project was originally identified as the having the single greatest priority in the FDSP but, due to cost, complexity of the project and wanting to also move forward elsewhere in the province, the Vancouver redevelopment project was deferred to phase two of the Plan. While the Society has made great progress with the projects in phase one, the challenges faced in Vancouver continue to grow and cannot be postponed any longer.

A recent needs assessment undertaken by the BC SPCA identified the need for an approximately 40,000 square foot facility consisting of a 17,500 square foot community animal centre; a 7,500 square foot full-service veterinary hospital; and a 15,000 square foot provincial office, at a projected construction cost of \$20.5 million (excludes land acquisition). As the flagship of the BC SPCA, this new facility would include features found at other new constructed community animal centres such as shared dog apartments, indoor/outdoor access for cats and multi-purpose rooms for youth education and obedience training, but would also include many of the latest innovations in animal welfare which would allow the new Hospital to become a teaching facility accredited with the various veterinary colleges across Canada; the animal centre to significantly strengthen recently developed partnerships with post-secondary academic institutions such as UBC, SFU and UVic; and allow its provincial office to expand services in critical areas that it simply has no capacity to do currently. A 40,000 square foot Vancouver facility would be similar in size to facilities recently completed in Edmonton, Ottawa and Winnipeg.

The greatest challenge that continues to be faced by the BC SPCA with this particular project is securing the appropriately sized, zoned and priced property on which to build the new facility. Three construction options have been considered, including redevelopment at the current location; a retrofit of an existing structure elsewhere in Vancouver; and acquisition of land and subsequent construction of a new facility on the property. All three options remain under active consideration, although each has its strengths and disadvantages. The option most under consideration and used for the purposes of this report is redevelopment of the 1205 East 7th Avenue property.

A redevelopment of property at 1205 East 7th Avenue has a number of significant benefits, including an excellent location; appropriate size and current zoning; proximity to public transport; and a neighbourhood that is already familiar with the work of the BC SPCA. The drawback of pursuing a redevelopment on the existing site includes the significant challenge of temporarily

relocating the animal shelter and hospital during the construction period. The BC SPCA is currently investigating the possibility of pursuing a phased approach to the construction that will allow one of either the Hospital or animal shelter to remain open during the first phase of construction and then subsequently move into the new facility, thereby avoiding relocation for one of the services.

Funding a project of this nature provides numerous obstacles for the BC SPCA. As a provincial organization that provides services across British Columbia, the Society is continuously mindful that it cannot concentrate or be perceived to be concentrating the majority of its resources to Vancouver. That said, the BC SPCA has been preparing for this project for some time and is confident that, with a second investment from the Government of British Columbia, it will secure the necessary funding to successfully complete this very ambitious but greatly needed project.

The anticipated \$20.5 million funding for the project includes:

- disposition of the 1245 East 7th Avenue property (current provincial office) with proceeds of sale, estimated at \$5 million, directed to the project;
- \$3 million in current reserves specifically designated to the project;
- \$2.5 million lead gift confirmed from a Vancouver-based philanthropist;
- \$2.5 million in existing unrestricted reserves that will be allocated to the project by way of resolution of the Board of Directors;
- \$2.5 million BC SPCA capital campaign undertaken once 85% of funding is secured quietly from major donors, which would include requests for local government support for project; and
- **\$5 million contribution from the Government of British Columbia.**

It is possible that the local governments may wish to amalgamate their services with those of the BC SPCA in a new facility. While this will increase the square footage of the building, any additional costs will be the responsibility of the local government. At the same time, such an arrangement may result in savings for both the BC SPCA and the local government as duplicate services are eliminated and costs are shared.

In terms of timing for the project, preliminary design work will continue throughout 2016 and early 2017. In the event that the Government of British Columbia agrees to support this project as part of its 2017/18 budget, a public announcement can be made in March 2017, with a ground-breaking ceremony planned for the end of 2017, and construction commencing in 2018 with completion of the project during 2019.

Once completed, the new facility will:

- Be a beacon for animal welfare in our province and house the thought-leadership for the BC SPCA's work in companion animal welfare, farm animal welfare, wild animal welfare as well as humane education and cruelty investigations;
- Serve as the primary facility for the surrender, sheltering and adoption of companion animals in the Lower Mainland;

- Provide expanded opportunities to house companion animal seized as a result of an animal cruelty investigation;
- Act as a primary end-point in the transfer of companion animals from rural communities with large animal populations to large urban communities where they can be adopted, thereby avoiding the need for euthanasia of adoptable companion animals;
- Provide extended behaviour training support for companion animals throughout the region;
- Provide expanded youth education programming, such as summer camp programs, with an emphasis on empathy development and responsible animal care;
- Create opportunities for the Society to offer the public programs such as obedience training and pet first aid courses;
- Allow for greater partnerships between the BC SPCA and women's shelters in the region, allowing women fleeing domestic violence to temporarily house their animals at the Centre;
- Allow expanded and specialized veterinary services to be provided from the new hospital, including increased services to low-income pet guardians living in the downtown Eastside of Vancouver;
- Allow for the expansion of outreach programs such as Charlie's Food Bank in the downtown Eastside;
- Allow for increased partnerships with post-secondary academic institutions in the area of veterinary medicine and animal welfare;
- Allow for the expansion of provincial services, including pet identification through the BC Pet Registry and the development of wildlife removal standards; and
- Significantly expand the number of volunteer opportunities at the Centre.



Current BC SPCA Vancouver Branch



Dog at the BC SPCA Vancouver Branch

5.2 Prince George

The North Cariboo branch of the BC SPCA is situated at 4011 Lansdowne Road in Prince George and serves the communities of Prince George, Hixon, and McLeod Lake. The BC SPCA also operates a high volume spay neuter clinic in Prince George at 1909 Queensway in Prince George that performs in excess of 2,500 sterilizations annually.

The BC SPCA has full title to the spay neuter clinic, but title to both land and building that house the animal shelter vests with the City of Prince George and occupation by the BC SPCA is subject to continuation of the City's animal control contract. The facility is 4,966 square feet and although in fair condition it was not built to adequately house cats and has no facilities to house larger animals. There are also no facilities to house large seized animals.

The North Cariboo facility is the fifth busiest animal shelter in terms of annual animal intake. However, it is important to note that a large portion of such animals come in through the animal control contract.

It is imperative that the Society have a physical presence in Prince George. With its central location and gateway to the northern area of the province, the facility plays a crucial role in the transfer program and in the area of cruelty investigations. In addition, despite the opening of the spay neuter clinic, Prince George still has a high population of unwanted animals.

The fact that occupation of the current facility is tied to the animal control contract poses significant challenges for the Society. Loss of the contract means an automatic loss of a physical sheltering presence in Prince George, which is an unacceptable situation for the Society. The lease does not contain an option to purchase and in any event the facility is too small to house the current number of animals and is not designed to properly house cats.

Any facility in Prince George would need to incorporate sufficient space to house seized animals and animals that are to be part of the transfer program. As much as possible, retail opportunities must be explored to generate additional operational funding. Since the spay neuter clinic is self-

sustaining and owned by the Society, we are not anticipating the need to construct a replacement facility at the same time as the new community animal centre.

Working with the City of Prince George and the Ministry of Forests, Lands and Natural Resource Operations, a 2.91-acre property located at the corner of Foothills Boulevard and 18th Avenue on the western edge of Prince George has been identified as the future home for the BC SPCA in Prince George. The City of Prince George has recently rezoned the property to allow for construction of a BC SPCA facility, which will now allow for the conclusion of a Crown lease on the said property.

At this time, the City of Prince George does not wish to participate in a joint venture with the Society and as such the BC SPCA is working on the assumption that animal control services will not be provided from the new facility. As a result, the approximate anticipated size of a new Prince George facility would be approximately 11,000 square feet, which would consist of the following:

- A 7,500 square foot community animal centre with facilities for seized companion animals; and
- A 2,500 square foot large animal seizure barn.

The anticipated total cost of this project is expected to be \$4.2 million.

In terms of timeline, property acquisition should occur before the end of 2016, which would be followed by approximately two years of planning and design. Construction would commence likely in the summer of 2019 and with completing taking place in 2020.

The anticipated \$4.2 million funding for the project includes:

- \$1.0 million in existing unrestricted reserves that will be allocated to the project by way of resolution of the Board of Directors;

- \$ 0.75 million BC SPCA capital campaign undertaken once 80% of funding secured, which would include requests for local government support for project; and
- **\$2.5 million contribution from the Government of British Columbia.**

Once completed, the new facility will:

- Serve as the primary companion and large animal seizure centre for the Cariboo region;
- Allow for a much needed expansion of animal care and welfare services throughout the Cariboo region;
- Allow for the expansion of youth education programming, such as summer camp programs, with an emphasis on empathy development and responsible animal care;
- Create opportunities for the Society to offer much sought after programs such as obedience training and pet first aid courses in the region;
- Allow for greater partnerships between the BC SPCA and women's shelters in the region, allowing women fleeing domestic violence to house their animals at the Centre; and
- Significantly expand the number of volunteer opportunities at the Centre.



BC SPCA North Cariboo District Branch



BC SPCA Prince George Spay Neuter Clinic

5.3 Fraser Valley

The BC SPCA operates two branches in the Fraser Valley. The Abbotsford branch is located at 34312 Industrial Way in Abbotsford and serves the Langley, Abbotsford and Mission areas, while the Chilliwack branch, located at 6797 Hopedale Road in Chilliwack, provides services to Chilliwack and surrounding areas and acts as the primary animal protection and transfer centre for the BC SPCA in the Lower Mainland and Fraser Valley.

The Society has title to both the land and buildings in Abbotsford and Chilliwack. The Abbotsford facility is 27 years old and is in fair condition having been renovated 12 years ago. The Chilliwack facility is 54 years old and despite undergoing small periodic renovations is in poor condition.

Considering the rapid population growth in the Fraser Valley and combined animal intake numbers which place the region in the top three busiest facilities in the province, there is no doubt that the Society requires a physical presence in the Fraser Valley.

Both facilities have come to the end of their lifecycle; however, it is not necessary to replace both facilities. Given the close proximity of the two communities, it makes both good business and animal welfare sense to construct one larger Fraser Valley facility to replace both Abbotsford and Chilliwack. Such a facility would be able to handle animal populations in both communities.

The Society has initiated discussions with the City of Abbotsford and the City of Chilliwack to identify an appropriately sized and zoned parcel of land that could serve as a future home of the Fraser Valley branch. The Society will be working to secure the land by way of donation from one of the cities.

Once an appropriately sized and zoned parcel of land has been acquired, the BC SPCA intends to construct an approximately 8,000 square foot Community Animal Centre and small surgical spay neuter suite to replace the existing facilities in Abbotsford and Chilliwack at a total projected cost of \$5.25 million.

The anticipated \$5.25 million funding for the project includes:

- Disposition of the current Abbotsford and Chilliwack properties, with proceeds of sale, estimated at \$1.0 million, directed to the project;
- \$1.0 million donation of land by either City of Abbotsford or Chilliwack (estimated);
- \$ 0.75 million BC SPCA capital campaign undertaken once 80% of funding is secured, which would include requests for local government support for project; and
- **\$2.5 million contribution from the Government of British Columbia.**

Once completed, the new facility will:

- Allow for a much needed expansion of animal care and welfare services in the Fraser Valley;
- Provide additional facilities to house seized companion animals in the region;
- Provide expanded spay neuter services to the animals of low-income British Columbians;
- Allow for the expansion of youth education programming, such as summer camp programs, with an emphasis on empathy development;
- Create opportunities for the Society to offer much sought after programs such as obedience training and pet first aid courses in the region;

- Allow for greater partnerships between the BC SPCA and women's shelters in the region, allowing women fleeing domestic violence to house their animals at the Centre;
- Significantly expand the number of volunteers opportunities at the Centre; and
- Result in the creation of 15 temporary construction jobs and an additional 5 permanent full time and part time positions at the new Centre.



BC SPCA Chilliwack Branch



BC SPCA Abbotsford Branch

Section 6.0 - Phase Three Projects: (Provincial Government Funding Not Sought at This Time)

6.1 Salmon Arm

The Shuswap branch of the BC SPCA is located at 5850 Auto Road SE in the industrial sector of Salmon Arm. The branch provides a wide range of animal related services to the Shuswap region.

The current facility is an approximately 3,400 square foot metal frame building that is 27 years old. It is in poor condition and lacks appropriate isolation facilities for both dogs and cats. The BC SPCA has full title to both lands and buildings.

The BC SPCA intends to construct a 4,000 square foot Community Animal Centre in Salmon Arm to serve the Shuswap region at a projected cost of \$2.6 million.

Although the branch is at the midpoint in terms of the number of animals it cares for each year, it is important to note that the branch does not perform animal control and is the only animal shelter in the community. There is also a significant cat overpopulation problem in the community. The poor state of the current facility, coupled with the number of unwanted animals,

necessitate the need for a new facility. A new facility in Salmon Arm would also ease the burden on the facility in Vernon.

In terms of timeline, land acquisition will be initiated in 2017, with discussions planned with the City of Salmon Arm over a possible donation of land. Detailed planning would commence in 2019, with a goal of completing construction in 2021.

Once completed, the new facility will:

- Allow for a much needed expansion of animal care and welfare services in the Shuswap;
- Provide additional facilities to house seized companion animals in the region;
- Allow for the expansion of youth education programming, such as summer camp programs, with an emphasis on empathy development;
- Create opportunities for the Society to offer much sought after programs such as obedience training and pet first aid courses in the region;
- Allow for greater partnerships between the BC SPCA and women's shelters in the region, allowing women fleeing domestic violence to house their animals at the Centre; and
- Significantly expand the number of volunteer opportunities at the Centre.

Projected cost of new facility:

The cost of constructing the new facility is projected to be \$2.6 million, comprised as follows:

Land acquisition costs:	\$ 750,000 (estimated)
Community Animal Centre:	\$ 1,800,000



BC SPCA Shuswap Branch

6.2 Kelowna (Phase Two)

The Kelowna branch of the BC SPCA is located at 3785 Casorso Road in Kelowna. The communities served include Kelowna, West Kelowna, Fintry, Lake Country, Rutland, Joe Rich, Okanagan Mission, and Peachland.

Three buildings are located on the property:

- An approximately 5,000 square foot animal shelter in good condition as a result of regular upgrades;
- A 3,600 square foot multi-purpose education room was constructed in 2012 to meet the growing demand for youth humane education programs in the Kelowna area, as well as to give the BC SPCA the ability to provide programs such as basic obedience training for guardians of newly adopted animals; and
- A 2,300 square foot Recovery and Adoption Barn built in 2015 as part of phase one of the FDSP.

The greater Kelowna area is currently facing two significant animal welfare challenges:

- There are currently no facilities to provide temporary care and rehabilitation to injured native wildlife, with the result that injured wildlife are being left to suffer and die unnecessary or alternatively are taken into care by well-meaning but untrained individuals, contrary to the Wildlife Act; and

- There is still a significant companion animal over-population crisis in the region and the current capacity of the community animal centre in Kelowna is insufficient to meet the number of animals that need to be admitted to the facility.

To overcome these problems, the BC SPCA proposes to expand the existing facilities by an additional 3,500 square feet. The expansion would allow for the construction of a triage centre for injured wildlife and additional kennels and rooms to appropriately house the number of companion animals that are being presented at the shelter.

The total cost of undertaking the expansion is projected at \$1.5 million.

Once completed, the expanded facility will:

- Establish a triage centre and rehabilitation centre for injured wildlife, so that they can be stabilized for 24-48 hours prior to transportation to an accredited wildlife centre, be humanely euthanized if in critical distress, or rehabilitated and released in accordance with the Wildlife Act;
- Provide much needed additional capacity to house seized companion animals from the Okanagan region;
- Provide additional capacity for the BC SPCA to further expand its partnership with local government in the animal services area, including through additional adoption capacity; and
- Allow for greater partnerships between the BC SPCA and women's shelters in the region, allowing women fleeing domestic violence to house their animals at the Centre.

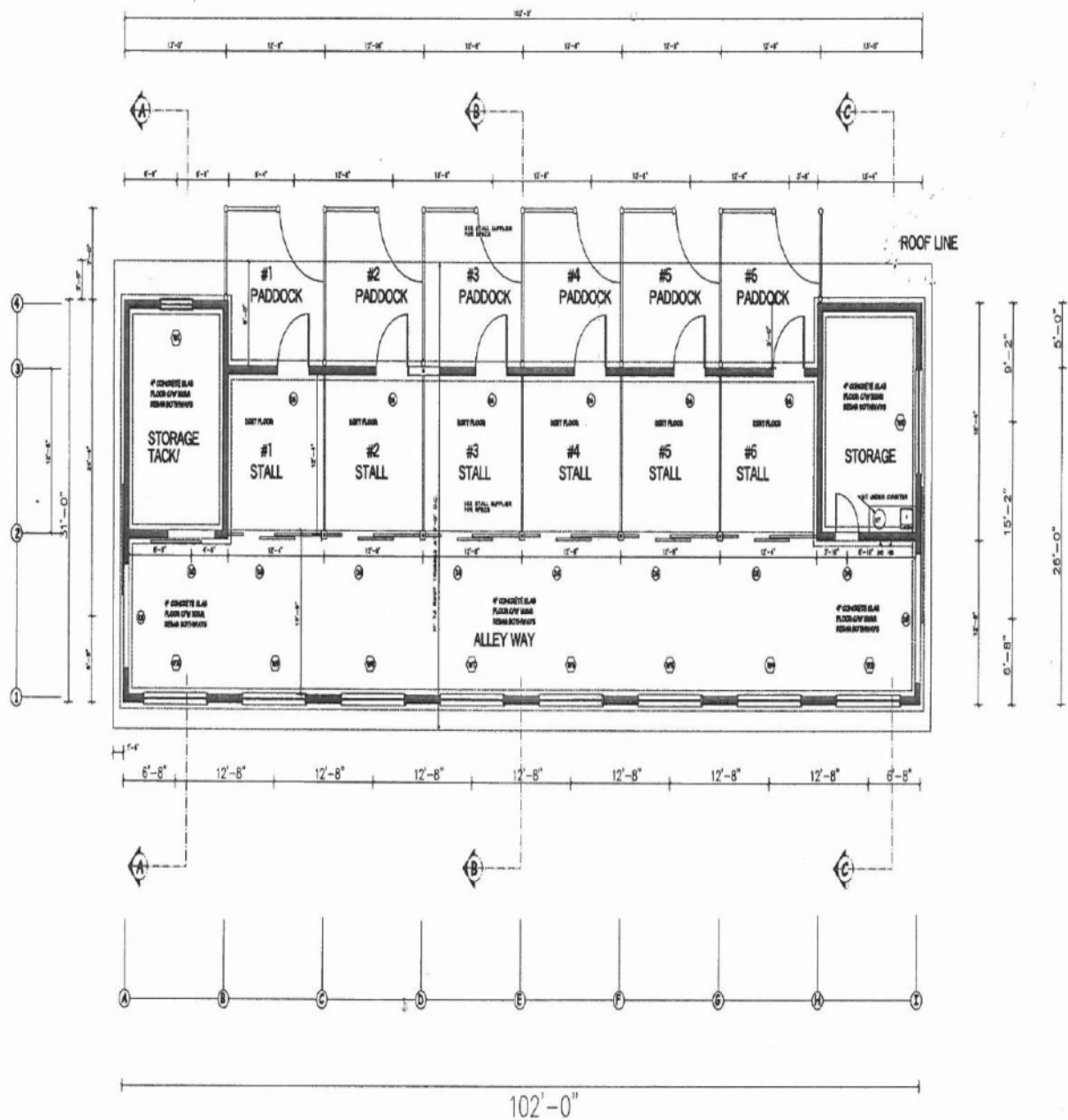
6.3 Nanaimo (Phase Two)

A new 7,500 square foot community animal centre for the Nanaimo and District branch was officially opened by Minister Michelle Stillwell on June 17, 2016. The new facility is located on 11.3 acres at 154 Westwood Road in Nanaimo.

A second phase is planned for the new Nanaimo Centre, namely the construction of a 2,300 square foot six stall multi-purpose large animal recovery and adoption barn and outdoor paddocks in 2019/20. The barn will be located immediately adjacent to the new community animal centre and will temporarily house large animals seized throughout Vancouver Island as a result of a cruelty investigation.

Once completed, the Society will have constructed four recovery and adoption barns, one in each of its operational regions, and will then have the capacity to temporarily house a majority of large animals seized as a result of an animal cruelty investigation.

The cost of constructing the barn is projected at \$250k.



Conceptual sketch of the Nanaimo horse barn

6.4 Surrey (Phase Two)

Phase one of the BC SPCA's Surrey facility, located at 16748 50th Avenue in Surrey, included construction of a large animal recovery and adoption barn and paddocks; cat intake facility; multi-purpose humane education room and adoption centre.

A second phase is planned for the existing Surrey facility in 2020 that will include construction of an approximately 2,500 square foot purpose built facility that will allow for:

- The temporary housing of controlled alien species;
- Additional multi-purpose space to accommodate anticipated growth in youth education activities; and
- Facilities to store oil spill response equipment and animal handling equipment required for emergency response, including flooding and forest fires.

BC SPCA Special Provincial Constables and Conservation Officers are regularly called out to investigate the living conditions of a variety of controlled alien species (CAS). Currently, there are no facilities at all to temporarily house these animals, with the result that many are housed at veterinary offices across the province. A purpose built facility to house CAS animals is urgently required. The facility in Surrey is sufficiently large enough to accommodate this need.

Likewise, there are currently significant challenges to the storing of oil spill response equipment needed to rehabilitate wildlife as a result of an oil spill. Such equipment is currently stored on private property, which presents challenges to professional oiled wildlife responders wishing to access the equipment at very short notice. The facility in Surrey is sufficiently large enough to accommodate this need.

Education of youth and adults will continue to be one of the core priorities for the Society in the years ahead. Accordingly, it is important that the Society have the facilities available in Surrey to meet this growing need. A second multi-purpose education room will be required within the next five years.

The projected cost to complete phase two is \$1.1 million.

6.5 Campbell River

The Campbell River branch of the BC SPCA is located at 891 13th Avenue in Campbell River. The facility is a store-front adoption centre that is leased by the BC SPCA. The facility is in good condition, but at 1,868 square feet, is simply too small to meet the animal welfare needs of Campbell River and surrounding communities.

The BC SPCA would like to replace its store-front adoption centre with an approximately 3,600 square foot Community Animal Centre that can provide a full range of animal welfare services to the community including:

- Facilities to house seized companion animals;
- Educational programs for youth and adults;
- Facilities that will allow residents to surrender companion animals to the BC SPCA;

- Acting as a staging point to transfer animals from communities' north of Campbell River to Nanaimo and Victoria; and
- Allowing for compassionate boarding of animals for individuals fleeing domestic violence.

The City of Campbell River has already indicated its willingness to support the BC SPCA with this initiative. Although nothing has been finalized, the City has expressed openness to a donation of land for a new facility.

Once completed, the new facility will:

- Allow for a much needed expansion of animal care and welfare services in the Campbell River area;
- Provide additional facilities to house seized companion animals in the region;
- Allow for the expansion of youth education programming, such as summer camp programs, with an emphasis on empathy development;
- Create opportunities for the Society to offer much sought after programs such as obedience training and pet first aid courses in the region;
- Allow for greater partnerships between the BC SPCA and women's shelters in the region, allowing women fleeing domestic violence to house their animals at the Centre; and
- Significantly expand the number of volunteer opportunities at the Centre.

The projected cost of constructing the new facility is projected to be \$1.95 million, comprised as follows:

Land acquisition costs:	\$ 350,000 (estimated, with possible donation)
Construction costs:	\$ 1,600,000



BC SPCA Campbell River Community Animal Centre

6.6 Cowichan

The Cowichan branch of the BC SPCA is located at 7550 Bell McKinnon Road in Duncan and serves communities throughout the Cowichan Valley. The facility is approximately 5,900 square feet in size, 19 years old and in fair condition. The BC SPCA has title to both the land and buildings.

Because of its more rural location, the branch is not as busy as other branches across Vancouver Island. This has allowed the branch to accept and rehabilitate more dogs with behaviour challenges than other branches across Vancouver Island. As a result, the branch has developed expertise in this area.

Recognizing that an increasing number of dogs entering BC SPCA shelters require behaviour remediation and may require additional time in our facilities, the BC SPCA wishes to undertake a significant renovation project at its Cowichan facility that will bring the facility up to the Canadian Standards of Care in Animal Shelters and allow it to become a centre of excellence for the remediation of such dogs. This will also require the facility to be enlarged from its current footprint.

Renovations will also include a multi-purpose education room that will permit the Society to expand its youth education programming throughout the Cowichan Valley.

Once completed, the new facility will:

- Create opportunities for the Society to offer much needed behaviour remediation programs for BC SPCA animals entering the system, thereby resulting in an increasing number of adoptions, as well as programs such as obedience training;
- Provide additional facilities to house seized companion animals in the Cowichan region;
- Allow for the expansion of youth education programming, such as summer camp programs, with an emphasis on empathy development;
- Allow for greater partnerships between the BC SPCA and women's shelters in the region, allowing women fleeing domestic violence to house their animals at the Centre; and
- Significantly expand the number of volunteer opportunities at the Centre.

The cost of completing the renovation is projected to be \$600k.



BC SPCA Cowichan & District

Section 7.0 - Thank You to the Government of British Columbia

The BC SPCA wishes to thank the Government of British Columbia for its support of the Facilities Development and Services Plan and for its consideration of this proposal to continue our successful partnership.

From: [Sturko, Derek AGRI:EX](#)
To: [Hrycuik, Lorie AGRI:EX](#)
Cc: [Knudsen, Mark ENV:EX](#); [Driedger, Emily AGRI:EX](#); [Hodson, Georgina AGRI:EX](#); [Phelps, Blair GCPE:EX](#); [Fair, Susan P AGRI:EX](#); [Mack, James AGRI:EX](#); [Scott, Melissa AGRI:EX](#)
Subject: Re: SPCA
Date: Wednesday, January 25, 2017 3:18:08 PM

Thanks

Derek Sturko
Sent from my iPhone

On Jan 25, 2017, at 3:14 PM, Hrycuik, Lorie AGRI:EX <Lorie.Hrycuik@gov.bc.ca> wrote:

Derek,
s.13

Let me know if you have any questions.
Lorie

From: Sturko, Derek AGRI:EX
Sent: Tuesday, January 24, 2017 3:40 PM
To: Knudsen, Mark AGRI:EX; Driedger, Emily AGRI:EX; Hodson, Georgina AGRI:EX; Hrycuik, Lorie AGRI:EX
Cc: Phelps, Blair GCPE:EX; Fair, Susan P AGRI:EX
Subject: RE: SPCA

Lorie – over to you.

Derek Sturko
Deputy Minister
BC Ministry of Agriculture
(250) 356-1800

From: Knudsen, Mark AGRI:EX
Sent: Tuesday, January 24, 2017 3:39 PM
To: Driedger, Emily AGRI:EX; Hodson, Georgina AGRI:EX
Cc: Sturko, Derek AGRI:EX; Phelps, Blair GCPE:EX; Fair, Susan P AGRI:EX
Subject: RE: SPCA

Hi all,
s.13

From: Driedger, Emily AGRI:EX
Sent: Tuesday, January 24, 2017 2:08 PM
To: Knudsen, Mark AGRI:EX; Hodson, Georgina AGRI:EX
Cc: Sturko, Derek AGRI:EX; Phelps, Blair GCPE:EX
Subject: RE: SPCA

I have just confirmed with his office, Minister is to call Craig at 3:45ish today

From: Knudsen, Mark AGRI:EX
Sent: Tuesday, January 24, 2017 2:03 PM

To: Driedger, Emily AGRI:EX; Hodson, Georgina AGRI:EX

Cc: Sturko, Derek AGRI:EX; Phelps, Blair GCPE:EX

Subject: RE: SPCA

Thanks – ps by Jeff, I mean Craig of course. Not sure where Jeff came from.

From: Driedger, Emily AGRI:EX

Sent: Tuesday, January 24, 2017 1:47 PM

To: Knudsen, Mark AGRI:EX; Hodson, Georgina AGRI:EX

Cc: Sturko, Derek AGRI:EX; Phelps, Blair GCPE:EX

Subject: RE: SPCA

Okay I will reach out and let you guys know what they say, please pass along the speaking points when completed.

Thanks!

Emily Driedger

Administrative Coordinator

Office of the Honourable Norm Letnick

Minister of Agriculture

Ph: 250.387.6651

From: Knudsen, Mark AGRI:EX

Sent: Tuesday, January 24, 2017 1:42 PM

To: Hodson, Georgina AGRI:EX

Cc: Sturko, Derek AGRI:EX; Phelps, Blair GCPE:EX; Driedger, Emily AGRI:EX

Subject: SPCA

Hi Georgina,

We'll set up a call for MNL to contact Jeff Daniels. If no concerns, I'll ask Emily to set up a call for about 3:45 today, depending on availability.
s.13

Blair – MNL is looking forward to seeing the EP and we'll make it work. I'd suggest next Tuesday afternoon would be best for MNL's schedule calendar.

Thanks!

Mark Knudsen

Chief of Staff to the Hon. Norm Letnick

Minister of Agriculture

Ph: 250.387.1023 | E: Mark.Knudsen@gov.bc.ca

From: [Viney, Ursula E AGRI:EX](#)
To: [Hrycuik, Lorie AGRI:EX](#)
Subject: RE: SPCA funding transfer
Date: Wednesday, January 25, 2017 10:18:21 AM

Hi Lorie, s.22

Please send me the list after your call. Thanks.

Cheers,

Ursula

From: Hrycuik, Lorie AGRI:EX
Sent: Wednesday, January 25, 2017 10:13 AM
To: Viney, Ursula E AGRI:EX
Subject: FW: SPCA funding transfer
Hi Ursula,

I am speaking with Craig from BCSPCA today to identify the specific projects that will be funded through the \$5 million. We are speaking at 12:45. Do you want to be on the call to listen? Or I can send you the list that is identified?

Lorie

From: Mack, James AGRI:EX
Sent: Friday, January 20, 2017 9:36 AM
To: Viney, Ursula E AGRI:EX; Boden, Wanda CSNR:EX; Boyd, Wes CSNR:EX
Cc: Hrycuik, Lorie AGRI:EX; Scott, Melissa AGRI:EX
Subject: RE: SPCA funding transfer
Important follow up – please do not communicate with SPCA until they're notified officially.

From: Mack, James AGRI:EX
Sent: Friday, January 20, 2017 9:29 AM
To: Viney, Ursula E AGRI:EX; Boden, Wanda CSNR:EX; Boyd, Wes CSNR:EX
Cc: Hrycuik, Lorie AGRI:EX; Scott, Melissa AGRI:EX
Subject: SPCA funding transfer

Ursula,

Did you/PAHB lead the \$5M year-end transfer to SPCA previously?

If so, can you do another \$5M this year as well?. If so, please work with CSNR on this. We just got word that we have the approval on the capital funding.

James Mack

Assistant Deputy Minister

Agriculture Science and Policy, Ministry of Agriculture

Phone: 250-356-1821

james.mack@gov.bc.ca

From: [Phelps, Blair GCPE:EX](#)
To: ["Craig Daniell"; Hrycuik, Lorie AGRI:EX](#)
Cc: [Geoff Urton; Melinda Mennie](#)
Subject: RE: Funding
Date: Wednesday, January 25, 2017 4:09:50 PM

Hi Criag and company,

Thanks for this.

I will reach out tomorrow morning once I have a firmer commitment regarding timing and logistics.

Blair

-----Original Message-----

From: Craig Daniell [<mailto:cdaniell@spca.bc.ca>]
Sent: Wednesday, January 25, 2017 4:08 PM
To: Hrycuik, Lorie AGRI:EX
Cc: Phelps, Blair GCPE:EX; Geoff Urton; Melinda Mennie
Subject: RE: Funding

Hi Lorie and Blair:

Thank you for your email.

We will work around the Government's schedule, so Tuesday morning or afternoon is no problem.

I have copied Geoff Urton and Melinda Mennie on this response so that they can help coordinate logistics and help with any additional details. (They understand the need for strict confidence)

In terms of messaging, we are more than happy with the Government indicating that the funding is to support new capital facilities in Vancouver and Prince George.

We can get a quote to you by tomorrow and can send off a separate write up on both Vancouver and Prince George.

Regards,

Craig

-----Original Message-----

From: Hrycuik, Lorie AGRI:EX [<mailto:Lorie.Hrycuik@gov.bc.ca>]
Sent: January-25-17 3:12 PM
To: Craig Daniell <cdaniell@spca.bc.ca>
Cc: Phelps, Blair GCPE:EX <Blair.Phelps@gov.bc.ca>
Subject: RE: Funding

Craig,

I had a quick conversation on our discussion at 12:45 with Blair from GCPE. I confirmed with him that we discussed the \$5 M dollars would be directed to Vancouver and Prince George. An event on Tuesday afternoon would work at the Vancouver shelter. It may be in the morning, so if you can keep this open. I know Blair is looking for a quote from you, so have included him in the email to connect the two of you.

Finally, some details of what the new shelter in Vancouver would be including square footage, or new location, etc. will be helpful in developing the media release. As I mentioned, if you are swamped right now, Blair can work with Geoff is easier to have this organized.

Lorie

Lorie Hrycuik
Ministry of Agriculture
250-356-8299

-----Original Message-----

From: Craig Daniell [<mailto:cdaniell@spca.bc.ca>]
Sent: Wednesday, January 25, 2017 9:02 AM
To: Hrycuik, Lorie AGRI:EX
Subject: RE: Funding

Hi Lorie,
Thanks for your note.
12:45 is perfect.
Just let me know what number I should call you at.
Regards,
Craig

-----Original Message-----

From: Hrycuik, Lorie AGRI:EX [<mailto:Lorie.Hrycuik@gov.bc.ca>]
Sent: January-24-17 6:33 PM
To: Craig Daniell <cdaniell@spca.bc.ca>
Subject: Funding

Hi Craig. I understand the Minister called you today to discuss funding. I would like to follow up on to discuss details with you and the potential event planning. **s.13** Wondering if we could speak right before the 1 pm call? Say 1245? Should not take longer than 15 minutes. Lorie

Sent from my BlackBerry 10 smartphone on the TELUS network.

From: [Phelps, Blair GCPE:EX](#)
To: [Hrycuik, Lorie AGRI:EX](#)
Subject: Re: Materials
Date: Saturday, January 28, 2017 12:45:25 PM

Do you think you will be able to review today?

Sent from my Samsung Galaxy smartphone.

----- Original message -----

From: "Phelps, Blair GCPE:EX"
Date: 2017-01-28 9:46 AM (GMT-08:00)
To: Geoff Urton , Melinda Mennie
Cc: "Hrycuik, Lorie AGRI:EX"
Subject: Materials

Morning,

Please find an updated package of materials for your review. Hoping you can confirm or correct the details about your facilities.

In the package there is the province-wide release, Prince George release, and form releases for Nanaimo, Kamloops, Kelowna, Cariboo and the Lower Mainland, that MLAs/Ministers may wish to issue to profile how the previous \$5 million has benefited their communities.

Thanks!

Blair

Sent from my Samsung Galaxy smartphone.

From: [Craig Daniell](#)
To: [Hryciuk, Lorie AGRI:EX](#); [Phelps, Blair GCPE:EX](#)
Cc: [Lorie Chortyk](#); [Melinda Mennie](#); [Geoff Urton](#)
Subject: quote and information on Vancouver and Prince George
Date: Thursday, January 26, 2017 4:35:08 PM

Hi Lorie and Blair:

Further to our discussions yesterday, I am including a draft quote for your consideration as well as some basic information on the two projects that the provincial government funding will support:

Quote:

"We are extremely grateful to the Government of British Columbia for their ongoing support of homeless, abused and vulnerable animals," said Craig Daniell, chief executive officer of the BC SPCA. "This \$5 million contribution provides a valuable launch as we move forward with community fundraising for second phase of our capital building plan, which will include new community animal centres in Vancouver and Prince George. The government has contributed a total of \$10 million since 2015 towards our \$53.8 million Facilities Development & Services Plan to replace or refurbish aging SPCA shelters, which has enabled us to carry out work in eight B.C. communities to date."

Vancouver:

The new flagship BC SPCA Campus in Vancouver will be a multi-purpose facility comprised of:

- Community Animal Centre for the rehabilitation and adoption of animals in distress;
- Full service Veterinary Hospital
- Education Centre; and
- Provincial Office.

The current Vancouver animal shelter houses the highest number of animals on an annual basis in the province and is often the go-to animal facility to care for companion animals seized as a result of a cruelty

investigation, such as the Langley "puppy-mill" investigation in early 2016.

The Vancouver Hospital is a full-service public veterinary hospital that, amongst other things, provides a full range of reduced cost or free veterinary services to low income pet guardians, including residents of the Downtown Eastside and the many feral cat groups in the region.

The Provincial Office is home to critical programs such as cruelty investigations; humane education; wildlife services; farm animal welfare; animal transfer program, as well as its administrative and fundraising divisions.

Due to their age and condition, coupled with the fact that all three facilities do not have the physical space requirements to meet existing needs of the community and the province, it is imperative that the Society replace the shelter, hospital and provincial office.

A recent needs assessment undertaken by the BC SPCA identified the need for an approximately 43,000 square foot facility consisting of:

- 17,500 square foot community animal centre;
- 7,500 square foot full-service veterinary hospital; and
- 18,000 square foot provincial office and education centre,

Projected construction cost for the new facility is projected at \$21 million (excludes land acquisition).

As the flagship of the BC SPCA, this new facility would include features found at other new constructed community animal centres such as shared dog apartments, indoor/outdoor access for cats and multi-purpose rooms for youth education and obedience training, but would also include

many of the latest innovations in animal welfare, which would for instance allow the new Hospital to become a teaching facility accredited with the various veterinary colleges across Canada; the animal centre to significantly strengthen recently developed partnerships with post-secondary academic institutions such as UBC, SFU and UVic; and allow its provincial office to expand services in critical areas that it simply has no capacity to do currently.

Once completed, the new facility will:

- Be a beacon for animal welfare in our province and house the thought-leadership for the BC SPCA's work in companion animal welfare, farm animal welfare, wild animal welfare as well as humane education and cruelty investigations;
- Serve as the primary facility for the surrender, sheltering and adoption of companion animals in the Lower Mainland;
- Provide expanded opportunities to house companion animal seized as a result of an animal cruelty investigation;
- Act as a primary end-point in the transfer of companion animals from rural communities with large animal populations to large urban communities where they can be adopted, thereby avoiding the need for euthanasia of adoptable companion animals;
- Provide extended behaviour training support for companion animals throughout the region;
- Provide expanded youth education programming, such as summer camp programs, with an emphasis on empathy development and responsible animal care;
- Create opportunities for the Society to offer the public programs such as obedience training and pet first aid courses;
- Allow for greater partnerships between the BC SPCA and women's shelters in the region, allowing women fleeing domestic violence to temporarily house their animals at the Centre;
- Allow expanded and specialized veterinary services to be provided from the new hospital, including increased services to low-income pet guardians living in the downtown Eastside of Vancouver;
- Allow for the expansion of outreach programs such as Charlie's Food Bank in the downtown Eastside;
- Allow for increased partnerships with post-secondary academic institutions in the area of veterinary medicine and animal welfare;
- Allow for the expansion of provincial services, including pet identification through the BC Pet Registry and the development of wildlife removal standards; and
- Significantly expand the number of volunteer opportunities at the Centre.

Note: The greatest challenge that continues to be faced by the BC SPCA with this particular project is securing the appropriately sized, zoned and priced property on which to build the new facility. Three construction options have been considered, including redevelopment at the current location; a retrofit of an existing structure elsewhere in Vancouver; and acquisition of land and subsequent construction of a new facility on the property. All three options remain under active consideration, although each has its strengths and disadvantages. The favoured option is redevelopment of the 1205 East 7th Avenue property.

Prince George:

The approximate anticipated size of a new Prince George facility would be approximately 11,000 square feet, which would consist of the following:

- A 7,500 square foot community animal centre with facilities for seized companion animals; and
- A 2,500 square foot large animal seizure barn.

The anticipated total cost of this project is expected to be \$4.2 million.

Working with the City of Prince George and the Ministry of Forests, Lands and Natural Resource Operations, a 2.91-acre property located at the corner of Foothills Boulevard and 18th Avenue on the western edge of Prince George has been identified as the potential future home for the BC SPCA in Prince George. Work to secure title to the property is underway.

Once completed, the new facility will:

- Serve as the primary companion and large animal seizure centre for the Cariboo region;
- Allow for a much needed expansion of animal care and welfare services throughout the Cariboo region;
- Allow for the expansion of youth education programming, such as summer camp programs, with an emphasis on empathy development and responsible animal care;
- Create opportunities for the Society to offer much sought after programs such as obedience training and pet first aid courses in the region;
- Allow for greater partnerships between the BC SPCA and women's shelters in the region, allowing women fleeing domestic violence to house their animals at the Centre; and
- Significantly expand the number of volunteer opportunities at the Centre.

Let me know if you require any additional information.

Regards,

Craig Daniell

Chief Executive Officer

BCSPCA

1245 East 7th Avenue

Vancouver BC V5T 1R1

Tel: 604.681.7271

Fax: 604.681.7022



OUR MISSION: To protect and enhance the quality of life for domestic, farm and wild animals in British Columbia.

The BC SPCA is a not-for-profit charitable organization reliant on donations from the public.
Charitable Tax # BN 11881 9036 RR0001

This message and any attachments or links are for the sole use of the intended recipient(s) and may contain privileged and confidential information. Any unauthorized review, use, disclosure or distribution is prohibited. If you are not the intended recipient, please notify us immediately and destroy the original message. Thank you.

NEWS RELEASE

For Immediate Release
[release number]
[Date]

Ministry of Agriculture

\$5 million to improve SPCA facilities for B.C.'s animals in need

Kamloops – Today the B.C. Government announced an additional \$5 million for the BC SPCA to support their eight-year Facilities Development and Service Plan to replace or renovate aging shelters.

The B.C. government recognizes and values the important work of the BC SPCA and its contributions to the welfare of animals. Today's funding builds on the \$5 million announced in Balanced Budget 2015 to support the first phase of their Facilities Plan, and supports our commitment to working with the BC SPCA to address animal welfare issues across the province.

The first phase funding is supporting the recently unveiled plans for a new community animal centre in Kamloops to help address the overwhelming pet population in the area. The new 9,700 square foot spay/neuter clinic will incorporate modern designs to ensure the highest levels of health and welfare for animals, including 14 shared 'apartments' for dogs to encourage natural movement and socialization, five large cat rooms, designated areas for temperament and behaviour assessments and specialized isolation areas for sick and injured animals.

The BC SPCA's mission is to protect and enhance the quality of life for domestic, farm and wild animals in B.C. The not-for-profit organization has been serving animals in need for more than 120 years, offering a wide range of outreach, education and advocacy programs to promote the welfare of animals.

The BC Government is making record investments in modern, safe infrastructure projects across the province. These investments are possible because of our strong fiscal plan – and through each, we are Building a Strong BC – together.

Quotes:

MLA

Craig Daniel, chief executive officer, BC SPCA –

"We are extremely grateful to the Government of British Columbia for their ongoing support of homeless, abused and vulnerable animals. This \$5 million contribution provides a valuable launch as we move forward with community fundraising for second phase of our capital building plan, which will include new community animal centres in Vancouver and Prince George. The government has contributed a total of \$10 million since 2015 towards our \$53.8 million Facilities Development & Services Plan to replace or refurbish aging SPCA shelters, which has enabled us to carry out work in eight B.C. communities to date."

Learn More:

Link to BC SPCA NR

<http://www.sPCA.bc.ca/>

Media Contacts:

Jill Milne

Government Communications and Public Engagement

Ministry of Agriculture

778 676-4460

Craig Daniels

BC SPCA

604 681-7271

NEWS RELEASE

For Immediate Release
[release number]
[Date]

Ministry of Agriculture

\$5 million to improve SPCA facilities for B.C.'s animals in need

Cariboo – Today the B.C. Government announced an additional \$5 million for the BC SPCA to support their eight-year Facilities Development and Service Plan to replace or renovate aging shelters.

The B.C. government recognizes and values the important work of the BC SPCA and its contributions to the welfare of animals. Today's funding builds on the \$5 million announced in Balanced Budget 2015 to support the first phase of their Facilities Plan, and supports our commitment to working with the BC SPCA to address animal welfare issues across the province.

The new funding commitment will support the expansion of the Prince George facility to include a community animal centre for seized pets and a barn for larger seized animals. The 11,000 square foot expansion of the facility will allow for a much needed increase in animal care and welfare services and support the Cariboo region as the primary pet and large animal seizure centre.

The BC SPCA's mission is to protect and enhance the quality of life for domestic, farm and wild animals in B.C. The not-for-profit organization has been serving animals in need for more than 120 years, offering a wide range of outreach, education and advocacy programs to promote the welfare of animals.

The BC Government is making record investments in modern, safe infrastructure projects across the province. These investments are possible because of our strong fiscal plan – and through each, we are Building a Strong BC – together.

Quotes:

MLA – Oakes

MLA - Barnett

Craig Daniel, chief executive officer, BC SPCA –

"We are extremely grateful to the Government of British Columbia for their ongoing support of homeless, abused and vulnerable animals. This \$5 million contribution provides a valuable launch as we move forward with community fundraising for second phase of our capital building plan, which will include new community animal centres in Vancouver and Prince George. The government has contributed a total of \$10 million since 2015 towards our \$53.8 million Facilities Development & Services Plan to replace or refurbish aging SPCA shelters, which has enabled us to carry out work in eight B.C. communities to date."

Learn More:

Link to BC SPCA NR

<http://www.sPCA.bc.ca/>

Media Contacts:

Jill Milne

Government Communications and Public Engagement

Ministry of Agriculture

778 676-4460

Craig Daniels

BC SPCA

604 681-7271

From: [Phelps, Blair GCPE:EX](#)
To: [Geoff Urton](#); [Melinda Mennie](#)
Cc: [Hryciuk, Lorie AGRI:EX](#)
Subject: Materials
Date: Saturday, January 28, 2017 9:46:19 AM
Attachments: [NR - SPCA Kamloops.docx](#)
[NR - SPCA Lower Mainland.docx](#)
[NR - SPCA PG.DOCX](#)
[NR - SPCA Nanaimo.docx](#)
[NR - SPCA.DOCX](#)
[NR - SPCA Kelowna.docx](#)
[NR - SPCA Cariboo.docx](#)

Morning,

Please find an updated package of materials for your review. Hoping you can confirm or correct the details about your facilities.

In the package there is the province-wide release, Prince George release, and form releases for Nanaimo, Kamloops, Kelowna, Cariboo and the Lower Mainland, that MLAs/Ministers may wish to issue to profile how the previous \$5 million has benefited their communities.

Thanks!

Blair

Sent from my Samsung Galaxy smartphone.

From: [Fair, Susan P AGRI:EX](#)
To: [Hryciuk, Lorie AGRI:EX](#)
Subject: BCSPCA document
Date: Tuesday, January 24, 2017 1:43:08 PM
Attachments: [16 08 26 2016 Government Funding Proposal Final.pdf](#)

Hi Lorie, Derek asked me to forward this BCSPCA document to you. He said this is not public knowledge so we need to keep it confidential.

Thanks.

Susan

Susan Fair
Sr. Executive Assistant
Deputy Minister's Office
Ministry of Agriculture
250-356-1800

From: [Viney, Ursula E AGRI:EX](#)
To: [Mack, James AGRI:EX](#); [Boden, Wanda CSNR:EX](#); [Boyd, Wes CSNR:EX](#)
Cc: [Hrycuik, Lorie AGRI:EX](#); [Scott, Melissa AGRI:EX](#)
Subject: Re: SPCA funding transfer
Date: Friday, January 20, 2017 10:01:48 AM

Hi all, yes I was the lead on the \$5M last time. I'll prepare another contract for signature.
Thanks.

From: Mack, James AGRI:EX
Sent: January-20-17 9:28 AM
To: Viney, Ursula E AGRI:EX; Boden, Wanda CSNR:EX; Boyd, Wes CSNR:EX
Cc: Hrycuik, Lorie AGRI:EX; Scott, Melissa AGRI:EX
Subject: SPCA funding transfer

Ursula,

Did you/PAHB lead the \$5M year-end transfer to SPCA previously?

If so, can you do another \$5M this year as well?. If so, please work with CSNR on this. We just got word that we have the approval on the capital funding.

James Mack

Assistant Deputy Minister

Agriculture Science and Policy, Ministry of Agriculture

Phone: 250-356-1821

james.mack@gov.bc.ca

From: [Melinda Mennie](#)
To: [Phelps, Blair GCPE:EX](#); [Craig Daniell](#); [Hrycuik, Lorie AGRI:EX](#)
Cc: [Geoff Urton](#)
Subject: Re: Funding
Date: Wednesday, January 25, 2017 4:24:00 PM

Thanks Blair,

I look forward to hearing more and s.22

All the best,
Melinda

From: Phelps, Blair GCPE:EX
Sent: Wednesday, January 25, 2017 4:09:48 PM
To: Craig Daniell; Hrycuik, Lorie AGRI:EX
Cc: Geoff Urton; Melinda Mennie
Subject: RE: Funding
Hi Criag and company,

Thanks for this.

I will reach out tomorrow morning once I have a firmer commitment regarding timing and logistics.

Blair

-----Original Message-----

From: Craig Daniell [<mailto:cdaniell@spca.bc.ca>]
Sent: Wednesday, January 25, 2017 4:08 PM
To: Hrycuik, Lorie AGRI:EX
Cc: Phelps, Blair GCPE:EX; Geoff Urton; Melinda Mennie
Subject: RE: Funding

Hi Lorie and Blair:

Thank you for your email.

We will work around the Government's schedule, so Tuesday morning or afternoon is no problem.

I have copied Geoff Urton and Melinda Mennie on this response so that they can help coordinate logistics and help with any additional details. (They understand the need for strict confidence)

In terms of messaging, we are more than happy with the Government indicating that the funding is to support new capital facilities in Vancouver and Prince George.

We can get a quote to you by tomorrow and can send off a separate write up on both Vancouver and Prince George.

Regards,

Craig

-----Original Message-----

From: Hrycuik, Lorie AGRI:EX [<mailto:Lorie.Hrycuik@gov.bc.ca>]

Sent: January-25-17 3:12 PM
To: Craig Daniell
Cc: Phelps, Blair GCPE:EX
Subject: RE: Funding

Craig,

I had a quick conversation on our discussion at 12:45 with Blair from GCPE. I confirmed with him that we discussed the \$5 M dollars would be directed to Vancouver and Prince George. An event on Tuesday afternoon would work at the Vancouver shelter. It may be in the morning, so if you can keep this open. I know Blair is looking for a quote from you, so have included him in the email to connect the two of you.

Finally, some details of what the new shelter in Vancouver would be including square footage, or new location, etc. will be helpful in developing the media release. As I mentioned, if you are swamped right now, Blair can work with Geoff is easier to have this organized.

Lorie

Lorie Hrycuik
Ministry of Agriculture
250-356-8299

-----Original Message-----

From: Craig Daniell [<mailto:cdaniell@spca.bc.ca>]
Sent: Wednesday, January 25, 2017 9:02 AM
To: Hrycuik, Lorie AGRI:EX
Subject: RE: Funding

Hi Lorie,
Thanks for your note.
12:45 is perfect.
Just let me know what number I should call you at.
Regards,
Craig

-----Original Message-----

From: Hrycuik, Lorie AGRI:EX [<mailto:Lorie.Hrycuik@gov.bc.ca>]
Sent: January-24-17 6:33 PM
To: Craig Daniell
Subject: Funding

Hi Craig, I understand the Minister called you today to discuss funding. I would like to follow up on to discuss details with you and the potential event planning. **s.13** Wondering if we could speak right before the 1 pm call? Say 1245? Should not take longer than 15 minutes. Lorie

Sent from my BlackBerry 10 smartphone on the TELUS network.

From: [Phelps, Blair GCPE:EX](#)
To: [Hrycuik, Lorie AGRI:EX](#)
Subject: RE: bc spca
Date: Wednesday, January 25, 2017 11:08:08 AM

Nice!

From: Hrycuik, Lorie AGRI:EX
Sent: Wednesday, January 25, 2017 11:08 AM
To: Phelps, Blair GCPE:EX
Subject: RE: bc spca

I have a call with Craig at 1245 so will have the list shortly after Blair. Will also have a potential location and will also request a quote

From: Phelps, Blair GCPE:EX
Sent: Wednesday, January 25, 2017 11:05 AM
To: Hrycuik, Lorie AGRI:EX
Subject: bc spca

When will you have the list of capital projects the \$5 million will help fund?

Page 70 to/à Page 72

Withheld pursuant to/removed as

s.13

NEWS RELEASE

For Immediate Release
[release number]
[Date]

Ministry of Agriculture

\$5 million to improve SPCA facilities for B.C.'s animals in need

PRINCE GEORGE – The expansion of the Prince George BC SPCA facility is one project that will benefit from an additional \$5 million from the Province of British Columbia.

The new funding commitment will support the expansion of the Prince George facility to include a community animal centre for seized pets and a barn for larger seized animals. The 11,000 square foot expansion of the facility will allow for a much needed increase in animal care and welfare services and support the Cariboo region as the primary pet and large animal seizure centre.

The centre will also expand youth education programming and create opportunities for the SPCA to offer sought after programs like obedience training and pet first aid. This contributes to the recently announced 30-year Crown land lease, which helps make the new facility possible.

The B.C. government recognizes and values the important work of the BC SPCA and its contributions to the welfare of animals. Today's funding builds on the \$5 million announced in Balanced Budget 2015 to support the first phase of their Facilities Plan, and supports our commitment to working with the BC SPCA to address animal welfare issues across the province.

The first phase funding supported a large animal seizure facility which opened in Kelowna in March 2015, and last June, a new state-of-the-art SPCA facility opened its doors in Nanaimo. Recently, plans were unveiled for a new community animal centre in Kamloops to help address the overwhelming pet population in the area.

The BC SPCA's mission is to protect and enhance the quality of life for domestic, farm and wild animals in B.C. The not-for-profit organization has been serving animals in need for more than 120 years, caring for neglected, abused and homeless animals and offering a wide range of outreach, education and advocacy programs to promote the welfare of animals.

The BC Government is making record investments in modern, safe infrastructure projects across the province. These investments are possible because of our strong fiscal plan – and through each, we are Building a Strong BC – together.

Quotes:

Shirley Bond, Prince George-Valemount MLA –

"Animals are defenceless creatures, so it's up to us to help them when they need it. This expanded facility brings hope that we will be able to help animal that needs treatment or a roof over their head. Prince George is on the forefront of giving domestic, farm and wild animals the care they deserve."

Mike Morris, Prince George-Mackenzie MLA –

“This funding is a contribution to the BC SPCA’s eight-year Facilities Development and Service Plan that has committed to replacing or renovating 10 facilities in B.C. communities.

Craig Daniel, chief executive officer, BC SPCA –

“We are extremely grateful to the Government of British Columbia for their ongoing support of homeless, abused and vulnerable animals. This \$5 million contribution provides a valuable launch as we move forward with community fundraising for second phase of our capital building plan, which will include new community animal centres in Vancouver and Prince George. The government has contributed a total of \$10 million since 2015 towards our \$53.8 million Facilities Development & Services Plan to replace or refurbish aging SPCA shelters, which has enabled us to carry out work in eight B.C. communities to date.”

Learn More:

Link to BC SPCA NR

<http://www.sPCA.bc.ca/>

Media Contacts:

Jill Milne
Government Communications and Public Engagement
Ministry of Agriculture
778 676-4460

Craig Daniels
BC SPCA
604 681-7271

NEWS RELEASE

For Immediate Release
[release number]
[Date]

Ministry of Agriculture

\$5 million to improve SPCA facilities for B.C.'s animals in need

Nanaimo – Today the B.C. Government announced an additional \$5 million for the BC SPCA to support their eight-year Facilities Development and Service Plan to replace or renovate aging shelters.

The B.C. government recognizes and values the important work of the BC SPCA and its contributions to the welfare of animals. Today's funding builds on the \$5 million announced in Balanced Budget 2015 to support the first phase of their Facilities Plan, and supports our commitment to working with the BC SPCA to address animal welfare issues across the province.

The first phase funding supported a new state-of-the-art SPCA facility which recently opened its doors in Nanaimo. The new \$3.4 million, 7,460 square foot building incorporates modern design to ensure the highest levels of health and welfare for animals, including shared 'apartments' for dogs to encourage natural movement and socialization, communal indoor-outdoor areas for cats, designated areas for temperament and behaviour assessments and socialized isolation areas for sick and injured animals.

The BC SPCA's mission is to protect and enhance the quality of life for domestic, farm and wild animals in B.C. The not-for-profit organization has been serving animals in need for more than 120 years, offering a wide range of outreach, education and advocacy programs to promote the welfare of animals.

The BC Government is making record investments in modern, safe infrastructure projects across the province. These investments are possible because of our strong fiscal plan – and through each, we are Building a Strong BC – together.

Quotes:

MLA

Craig Daniel, chief executive officer, BC SPCA –

"We are extremely grateful to the Government of British Columbia for their ongoing support of homeless, abused and vulnerable animals. This \$5 million contribution provides a valuable launch as we move forward with community fundraising for second phase of our capital building plan, which will include new community animal centres in Vancouver and Prince George. The government has contributed a total of \$10 million since 2015 towards our \$53.8 million Facilities Development & Services Plan to replace or refurbish aging SPCA shelters, which has enabled us to carry out work in eight B.C. communities to date."

Learn More:

Link to BC SPCA NR

<http://www.sPCA.bc.ca/>

Media Contacts:

Jill Milne

Government Communications and Public Engagement

Ministry of Agriculture

778 676-4460

Craig Daniels

BC SPCA

604 681-7271

NEWS RELEASE

For Immediate Release
[release number]
[Date]

Ministry of Agriculture

\$5 million to improve SPCA facilities for B.C.'s animals in need

Lower Mainland – Today the B.C. Government announced an additional \$5 million for the BC SPCA to support their eight-year Facilities Development and Service Plan to replace or renovate aging shelters.

The B.C. government recognizes and values the important work of the BC SPCA and its contributions to the welfare of animals. Today's funding builds on the \$5 million announced in Balanced Budget 2015 to support the first phase of their Facilities Plan, and supports our commitment to working with the BC SPCA to address animal welfare issues across the province.

The first phase funding supported a large animal adoption and recovery barn, as well as a specialized facility for seized cats in Surrey, which played a critical role in the BC SPCA's ability to act quickly in a number of large-scale investigations carried out last year.

The new 43,000 square foot flagship campus in Vancouver will include a Community Animal Centre, full service veterinary hospital, education centre and serve as the BC SPCA's provincial office. This will increase their capacity to serve as the Lower Mainland's primary hub for surrendered animals, those in need of shelter, and for companion animals that are looking for their forever homes.

The BC SPCA's mission is to protect and enhance the quality of life for domestic, farm and wild animals in B.C. The not-for-profit organization has been serving animals in need for more than 120 years, offering a wide range of outreach, education and advocacy programs to promote the welfare of animals.

The BC Government is making record investments in modern, safe infrastructure projects across the province. These investments are possible because of our strong fiscal plan – and through each, we are Building a Strong BC – together.

Quotes:

MLA

Craig Daniel, chief executive officer, BC SPCA –

"We are extremely grateful to the Government of British Columbia for their ongoing support of homeless, abused and vulnerable animals. This \$5 million contribution provides a valuable launch as we move forward with community fundraising for second phase of our capital building plan, which will include new community animal centres in Vancouver and Prince George. The government has contributed a total of \$10 million since 2015 towards our \$53.8

million Facilities Development & Services Plan to replace or refurbish aging SPCA shelters, which has enabled us to carry out work in eight B.C. communities to date.”

Learn More:

Link to BC SPCA NR

<http://www.sPCA.bc.ca/>

Media Contacts:

Jill Milne

Government Communications and Public Engagement

Ministry of Agriculture

778 676-4460

Craig Daniels

BC SPCA

604 681-7271

NEWS RELEASE

For Immediate Release
[release number]
[Date]

Ministry of Agriculture

\$5 million to improve SPCA facilities for B.C.'s animals in need

Kelowna – Today the B.C. Government announced an additional \$5 million for the BC SPCA to support their eight-year Facilities Development and Service Plan to replace or renovate aging shelters.

The B.C. government recognizes and values the important work of the BC SPCA and its contributions to the welfare of animals. Today's funding builds on the \$5 million announced in Balanced Budget 2015 to support the first phase of their Facilities Plan, and supports our commitment to working with the BC SPCA to address animal welfare issues across the province.

The first phase funding supported a large animal seizure facility which opened in Kelowna in March 2015. The new 2,500-square-foot Recovery & Adoption Barn will temporarily house horses and farm animals rescued from abusive or neglectful situations in the Okanagan region. The facility includes six indoor-outdoor stalls, a tack room and hay storage area.

The BC Government is making record investments in modern, safe infrastructure projects across the province. These investments are possible because of our strong fiscal plan – and through each, we are Building a Strong BC – together.

Quotes:

MLA

Craig Daniel, chief executive officer, BC SPCA –

"We are extremely grateful to the Government of British Columbia for their ongoing support of homeless, abused and vulnerable animals. This \$5 million contribution provides a valuable launch as we move forward with community fundraising for second phase of our capital building plan, which will include new community animal centres in Vancouver and Prince George. The government has contributed a total of \$10 million since 2015 towards our \$53.8 million Facilities Development & Services Plan to replace or refurbish aging SPCA shelters, which has enabled us to carry out work in eight B.C. communities to date."

Learn More:

Link to BC SPCA NR

<http://www.sPCA.bc.ca/>

Media Contacts:
Jill Milne

Government Communications and Public Engagement
Ministry of Agriculture
778 676-4460

Craig Daniels
BC SPCA
604 681-7271



Meeting Date: January 31, 2017

Confidential

Honourable Norm Letnick
Minister of Agriculture
Room 325 Parliament Buildings
Victoria, BC V8V 1X4

Dear Colleague:


Re: Year-end Funding Approval

Your ministry may access 2016/17 Contingencies, after exhausting its base budget, for up to the noted amount in order to fund the following initiative, as a STOB 77 grant:

Recipient / Purpose	Amount (\$ millions)
Society for the Prevention of Cruelty to Animals (SPCA) – Contribution for the Construction of New Facilities	5.0

Note that this approval is subject to your ministry staff ensuring that a report back on results achieved is provided by the SPCA.

Sincerely,


Michael de Jong, Q.C.
Chair

cc: Derek Sturko
Deputy Minister
Ministry of Agriculture

Wes Boyd
Assistant Deputy Minister and Executive Financial Officer
Ministry of Agriculture

Ministry of
Finance

Treasury Board

Mailing Address
PO Box 9489 Stn Prov Govt
Victoria BC V8V 9V8

Location Address:
1st Floor – 617 Government St
Victoria BC

Fair, Susan P AGRI:EX

From: Hrycuik, Lorie AGRI:EX
Sent: Wednesday, January 25, 2017 3:14 PM
To: Sturko, Derek AGRI:EX; Knudsen, Mark AGRI:EX; Driedger, Emily AGRI:EX; Hodson, Georgina AGRI:EX
Cc: Phelps, Blair GCPE:EX; Fair, Susan P AGRI:EX; Mack, James AGRI:EX; Scott, Melissa AGRI:EX
Subject: RE: SPCA

Derek.
s.13

Let me know if you have any questions.

Lorie

From: Sturko, Derek AGRI:EX
Sent: Tuesday, January 24, 2017 3:40 PM
To: Knudsen, Mark AGRI:EX; Driedger, Emily AGRI:EX; Hodson, Georgina AGRI:EX; Hrycuik, Lorie AGRI:EX
Cc: Phelps, Blair GCPE:EX; Fair, Susan P AGRI:EX
Subject: RE: SPCA

Lorie – over to you.

Derek Sturko
Deputy Minister
BC Ministry of Agriculture
(250) 356-1800

From: Knudsen, Mark AGRI:EX
Sent: Tuesday, January 24, 2017 3:39 PM
To: Driedger, Emily AGRI:EX; Hodson, Georgina AGRI:EX
Cc: Sturko, Derek AGRI:EX; Phelps, Blair GCPE:EX; Fair, Susan P AGRI:EX
Subject: RE: SPCA

Hi all,

s.13

From: Driedger, Emily AGRI:EX
Sent: Tuesday, January 24, 2017 2:08 PM
To: Knudsen, Mark AGRI:EX; Hodson, Georgina AGRI:EX
Cc: Sturko, Derek AGRI:EX; Phelps, Blair GCPE:EX
Subject: RE: SPCA

I have just confirmed with his office, Minister is to call Craig at 3:45ish today

From: Knudsen, Mark AGRI:EX
Sent: Tuesday, January 24, 2017 2:03 PM
To: Driedger, Emily AGRI:EX; Hodson, Georgina AGRI:EX
Cc: Sturko, Derek AGRI:EX; Phelps, Blair GCPE:EX
Subject: RE: SPCA

Thanks – ps by Jeff, I mean Craig of course. Not sure where Jeff came from.

From: Driedger, Emily AGRI:EX
Sent: Tuesday, January 24, 2017 1:47 PM
To: Knudsen, Mark AGRI:EX; Hodson, Georgina AGRI:EX
Cc: Sturko, Derek AGRI:EX; Phelps, Blair GCPE:EX
Subject: RE: SPCA

Okay I will reach out and let you guys know what they say, please pass along the speaking points when completed.

Thanks!

Emily Driedger
Administrative Coordinator
Office of the Honourable Norm Letnick
Minister of Agriculture
Ph: 250.387.6651

From: Knudsen, Mark AGRI:EX
Sent: Tuesday, January 24, 2017 1:42 PM
To: Hodson, Georgina AGRI:EX
Cc: Sturko, Derek AGRI:EX; Phelps, Blair GCPE:EX; Driedger, Emily AGRI:EX
Subject: SPCA

Hi Georgina,

We'll set up a call for MNL to contact Jeff Daniels. If no concerns, I'll ask Emily to set up a call for about 3:45 today, depending on availability.

s.13

Blair – MNL is looking forward to seeing the EP and we'll make it work. I'd suggest next Tuesday afternoon would be best for MNL's schedule calendar.

Thanks!

Mark Knudsen
Chief of Staff to the Hon. Norm Letnick
Minister of Agriculture
Ph: 250.387.1023 | E: Mark.Knudsen@gov.bc.ca

**Proposal to
the Government of British Columbia:**

**Phase II Capital Funding for the BC SPCA
Facilities Development & Services Plan**

BCSPCA
SPEAKING FOR ANIMALS

THE BRITISH COLUMBIA SOCIETY FOR THE PREVENTION OF CRUELTY TO ANIMALS

August 15, 2016

INDEX

SECTION 1.0	EXECUTIVE SUMMARY
SECTION 2.0	INTRODUCTION
2.1	About the BC SPCA
2.2	Programs and Services
2.3	Statistics at a Glance
2.4	A Commitment to Transparency and Accountability
2.5	Growth and Financial Stability
SECTION 3.0	THE BC SPCA FACILITIES DEVELOPMENT AND SERVICES PLAN
3.1	The Cost of Constructing Community Animal Centres and BC SPCA Expertise in the Area
3.2	Phased Approach to Implementing the FDSP
3.3	Financial Commitment to the Project by the BC SPCA
3.4	Financial Commitment of the Government of British Columbia and Funding Request for Phase Two
3.5	The Case for Support for Further Funding by the Government of British Columbia
3.6	Media Interest and Publicity of Initial Government Funding
SECTION 4.0	PHASE ONE PROJECTS (COMPLETED OR IN PROGRESS)
4.1	Nanaimo
4.2	Surrey
4.3	Kelowna
4.4	Kamloops
4.5	Castlegar
4.6	Dawson Creek
SECTION 5.0	PHASE TWO PROJECTS (PROVINCIAL GOVERNMENT FUNDING REQUESTED)
5.1	Vancouver
5.2	Prince George
5.3	Fraser Valley
SECTION 6.0	PHASE THREE PROJECTS (PROVINCIAL GOVERNMENT FUNDING NOT SOUGHT AT THIS TIME)
6.1	Salmon Arm
6.2	Kelowna
6.3	Nanaimo
6.4	Surrey
6.5	Campbell River
6.6	Cowichan
SECTION 7.0	THANK YOU TO THE GOVERNMENT OF BRITISH COLUMBIA
SECTION 8.0	APPENDICES
Appendix A:	Audited Financial Statements of the BC SPCA for Period Ending December 31, 2015
Appendix B:	BC SPCA Facilities Summary

Section 1.0 - Executive Summary

The British Columbia Society for the Prevention of Cruelty to Animals (the “BC SPCA” or the “Society”) is a not-for-profit charitable organization dedicated to protecting and enhancing the quality of life for domestic, farm and wild animals in British Columbia.

Supported by more than 80,000 British Columbians, BC SPCA Special Constables investigate in excess of 10,000 complaints of animals in distress each year under the *Prevention of Cruelty to Animals Act* (PCAA). The recent puppy mill seizures in Langley emphasize the critical role that the BC SPCA plays in communities across the province and the value that British Columbians place in the work of the BC SPCA.

The BC SPCA operates forty-one facilities across the province. A review of facilities undertaken in 2013¹ identified an urgent need to replace nine facilities and to make improvements in three others. This review resulted in the adoption of a Facilities Development and Services Plan (FDSP), which seeks to replace or improve twelve facilities over eight years at a cost of \$53.9 million.

The first phase of the FDSP (2014 to April 2017) covers facility replacement or redevelopment at six facilities (Nanaimo; Kelowna; Surrey; Kamloops; Castlegar; and Dawson Creek) at a total projected cost of \$15.9 million. The Government of British Columbia has very generously provided \$5 million in capital funding for phase one of the FDSP. Through additional support from local governments, foundations and private donors, the BC SPCA will have secured the remaining \$10.9 million required to complete these projects. Phase one projects include:

- Construction of a new Nanaimo Community Animal Centre at a cost of \$3.56 million. The project was completed with an allocation of \$1.3 million in provincial government funding;
- Construction of a large animal recovery and adoption barn in Kelowna at a total cost of \$259k, completed with \$100k of provincial government funding allocated to the project;
- Construction of a large animal recovery and adoption barn, cat seizure facility, education and adoption centre in Surrey at a cost of \$2.6 million. \$400k in provincial government funding was allocated to complete this project;
- Construction in early 2017 of a new Kamloops and District Community Animal Centre and Spay Neuter Clinic to replace existing facilities at a projected cost of \$4.75 million, with \$1.5 million of provincial government funding provisionally allocated to the project;
- Construction slated for spring 2017 of a new West Kootenay Community Animal Centre in Castlegar to replace the Trail animal shelter at a projected cost of \$1.95 million, with \$900k of provincial government funding allocated to this project; and
- Construction slated for spring 2017 of a new South Peace Community Animal Centre in Dawson Creek to replace the existing animal shelter at a total projected cost of \$2.85 million, with \$800k in provincial government funding tentatively allocated to the project.

¹ Updated for 2016 submission to Government of British Columbia

3 The Society has now begun detailed preparations for phase two of the FDSP, which covers a four-year period from 2017 to 2020 and involves replacement of its three largest and busiest facilities - Vancouver, the Fraser Valley and Prince George - at a total projected cost of \$30 million. The projects include:

- Construction of a new 40,000 square foot flagship BC SPCA Campus in Vancouver, comprising Community Animal Centre, Veterinary Hospital and Provincial Office to replace the existing 57-year-old facility at a projected cost of \$20.5 million;
- Construction of a 7,500 square foot Prince George Community Animal Centre and 2,500 square foot large animal recovery barn to replace the existing animal shelter at a total projected cost of \$4.2 million; and
- Construction of an 8,000 square foot Fraser Valley Community Animal Centre and 2,500 square foot Spay Neuter Clinic to replace the facilities located in Abbotsford and Chilliwack at a total projected cost of \$5.25 million.

Over the past two years, the BC SPCA has been able to leverage the \$5 million in provincial government support with the assistance of local government and its own donors. As such, the Society is confident that over the course of the next three years it can raise two-thirds² of the cost (\$20 million) of phase two projects through a combination of additional financial support from other levels of government, existing reserves, capital campaign fundraising, and mortgage financing, if necessary.

Accordingly, the BC SPCA respectfully requests capital funding of \$10 million from the Government of British Columbia as part of the 2017 provincial budget to support completion of phase two projects in the time period outlined above.

A second round of capital funding by the province for the FDSP will not only have lasting benefit for the welfare of animals, but also for the province of British Columbia. Benefits include job creation through construction projects and additional permanent employment positions at new facilities, safer communities, violence prevention programs for youth and an improved ability to assist animal owners in emergency situations such as fires, earthquakes and floods.

A third phase of the FDSP is planned for the period 2020 to 2022 and will seek to replace existing facilities in Salmon Arm and Campbell River; upgrade the existing Cowichan facility; and complete the second stage of construction in Nanaimo, Surrey and Kelowna at a total projected cost of \$8 million. The BC SPCA is not seeking provincial government funding for phase three at this time.

The BC SPCA remains committed to working closely with the Government of British Columbia to address animal welfare concerns across the province and wishes to place on record its profound thanks to the Government for its support and commitment to the FDSP.

A comprehensive funding proposal is attached for consideration by the Government of British Columbia. We thank you in advance for your consideration and look forward to hearing from you.

Questions and/or clarifications can be directed to the Chief Executive Officer, Craig Daniell, at cdaniell@spca.bc.ca or at 604.647.1322.

² 2014 phase I submission requested 50% funding from government.

Section 2.0 - Introduction

2.1 About the BC SPCA

The British Columbia Society for the Prevention of Cruelty to Animals (hereinafter referred to as the "BC SPCA" or the "Society") is a not-for-profit charitable organization dedicated to protecting and enhancing the quality of life for domestic, farm and wild animals in British Columbia (Registered Charity number BN 11881 9036 RR0001).

The Society enforces the provincial *Prevention of Cruelty to Animals Act* (PCAA) and is the only animal welfare organization in British Columbia with the authority to enforce laws relating to animal cruelty and to prepare cases for the prosecution of individuals who inflict suffering on animals.

Through its forty-one locations across the province, the BC SPCA provides a wide range of services and programs that assist tens of thousands of animals in distress each year.

While the BC SPCA's primary mandate is to enforce animal cruelty legislation and to ensure that companion, farm and wild animals are treated humanely, the Society also works closely with government and social agencies to help create safe, livable and healthy communities.

Activities include:

- **The Violence Link.** BC SPCA Special Provincial Constables regularly cross-report cases of animal abuse to social service agencies in situations where women and children may also be at risk of domestic violence;
- **Compassionate Boarding.** SPCA branches across B.C. provide thousands of dollars' worth of free, temporary care for pets of women and families fleeing abusive domestic situations. Many of these individuals report that they would be reluctant to leave abusive situations if options were not available for their pets;
- **Development of School Curricula.** The Society's humane education staff works closely with teachers across the province to nurture young British Columbians. The BC SPCA has developed a number of curriculum units and education resources, in use across B.C., which support empathy development and compassion;
- **Youth Programs.** BC SPCA educators and branch staff also offer community-based workshops, school clubs, a year-round Kids Club and summer camps for thousands of youth which promote compassion, empathy and messages about anti-bullying and responsible citizenship;
- **Policy Development and Community Safety.** BC SPCA experts serve as key advisors to municipalities and First Nations on bylaws that ensure safe, humane communities. Through direct consultation and the Society's package of Model Animal Control Bylaws, the BC SPCA helps municipalities and First Nations address a variety of community animal management issues, including dangerous dogs, animal control and pound operations, urban wildlife management, exotic animals, animal licensing and pet overpopulation;

- **Outreach Programs.** The BC SPCA liaises with social service agencies and provides a range of programs to support low-income residents, including pet food banks, free vet clinics for disadvantaged pet guardians, low-cost and free spay/neuter services, and emergency support; and,
- **Animal Welfare Expertise.** The BC SPCA maintains a close association with the University of British Columbia's Animal Welfare Program and other academic institutions in North America to ensure that our staff is able to bring the latest and most comprehensive knowledge of animal welfare to B.C. communities. Our staff includes internationally recognized animal welfare experts on a range of issues impacting B.C. communities, such as human-wildlife conflicts, dangerous exotic animals, oil spill safety, farm animal codes of practice and transport regulations, models to reduce pet overpopulation, collaboration with community organizations and other key issues impacting public health and safety.

2.2 Programs and Services

The BC SPCA provides a wide range of services and programs that benefit both animals and people across British Columbia, including:

- Enforcement of animal cruelty laws through investigations into cases of animal cruelty and neglect;
- Sheltering and adoption of homeless, surrendered and abandoned animals;
- Through its recently established BC Pet Registry, reuniting lost pets with their families;
- Compassionate boarding for individuals in crises, including temporary free boarding of animals owned by women fleeing domestic violence;
- Subsidized and discounted spay neuter and veterinary services for lower income pet owners and families to reduce the overpopulation of companion animals across B.C.;
- Outreach programs for disadvantaged pet guardians, including pet food banks and free monthly vet clinics in communities such as Vancouver's Downtown Eastside;
- Programs for youth, including school programs, summer camps and the BC SPCA Kids Club, teaching empathy development and responsible care of animals;
- Meaningful volunteer opportunities to more than 4,000 community volunteers across the province;
- Cruelty prevention and education programs for adults;
- Emergency medical treatment and after-hours rescue for injured animals;
- Policy and enforcement expertise on animal cruelty legislation, municipal animal control bylaws, dangerous dogs, exotic animal ownership, standards of care for farm animals and dog breeders, and other key issues;

- Protection and programs for farm animals, including the SPCA Certified farm certification and labelling program, to ensure high standards of animal welfare by producers of meat, poultry, eggs and cheese;
- Wildlife rescue, rehabilitation and public education;
- Original research in animal welfare and animal behaviour science; and
- Advice to British Columbians on wildlife related and animal cruelty related questions through its provincial call centre.



2.3 Statistics at a Glance

The BC SPCA employs 551 staff members (full-time, part-time, seasonal and auxiliary) and engages approximately 4,000 volunteers throughout the province. In the past ten years alone, the BC SPCA has created approximately 180 new full and part time jobs across British Columbia, and was recognized as one of BC's Top 20 Dream Employers in 2014 and 2015 by Miles Employment, Vision Critical and the Vancouver Board of Trade.

Our staff includes 31 full-time and another four auxiliary Special Provincial Constables, who are trained and authorized to investigate complaints of animal cruelty and neglect.

DIRECT CARE FOR ANIMALS	2015	2014	2013
Total number of animals assisted across B.C. (including community outreach programs)	43,249	42,244	41,691
Injured, abused, homeless and surrendered animals cared for in BC SPCA branches	27,187	25,942	24,636
Lost pets reunited with their guardians	3,949	3,829	3,742
Animals adopted into loving homes	15,811	15,335	14,259
Animals transported through BC SPCA Drive for Lives program	4,994	4,739	3,285
Injured and orphaned wildlife rescued at Wild ARC, the BC SPCA wildlife rehabilitation centre in Metchosin	2,937	2,508	2,298

CALLS TO PROVINCIAL CALL CENTRE	2015	2014
Total calls	25,923	21,746
Reports of animal cruelty	49%	52%
Assistance with wildlife issues	25%	27%
General enquiries	21%	21%
Pet Registry enquiries	5%	N/A

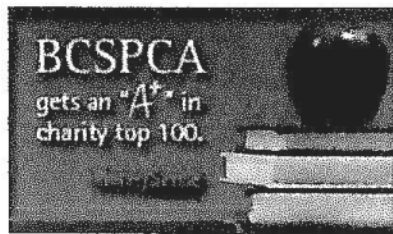
CRUELTY INVESTIGATIONS ACTIVITIES	2015	2014	2013
Number of animal cruelty complaints investigated	10,205	8,848	7,839
Animals removed from their owners	1,110	1,276	1,340
Number of warrants executed under the Criminal Code of Canada, the Prevention of Cruelty to Animals Act or the Offense Act	148	160	102
Charges of animal cruelty and neglect submitted to Crown Counsel	53	53	23

ONLINE SITES	2015	2014	2013
Website visitors (spca.bc.ca)	4,277,286	2,910,409	2,544,235
Facebook fans	59,535	41,211	21,405
Twitter followers	21,287	16,814	12,163
Live Kitty Cam views	49,200	62,000	57,000
Anim@ls e-newsletter subscribers	88,535	82,928	84,029

2.4 A Commitment to Transparency and Accountability

Consistent with its Guiding Principles, the BC SPCA is committed to upholding the highest standards of transparency and accountability across the organization. The BC SPCA is currently the only SPCA in Canada and one of a small number of charities in British Columbia that has received accreditation by the Imagine Canada Standards Program, designed to help charities demonstrate excellence and strengthen public confidence in Canada's charitable and non-profit sector.

In addition, the BC SPCA has consistently received an "A" rating or better from MoneySense magazine in its annual rating of Canada's 100 top charities. Moreover, Charity Intelligence³ chose the BC SPCA as one of its top charities in 2012 and 2014.



The BC SPCA is in good standing with WorkSafeBC and is committed to ensuring there is a healthy and safe working and learning environment at our worksites. The Society is committed to:

- The maintenance of a safe and healthy environment for all staff, volunteers, and the general public as a priority;
- Meeting or exceeding current health and safety regulations or legislation; and,

³ <http://www.charityintelligence.ca/top-picks-2012>

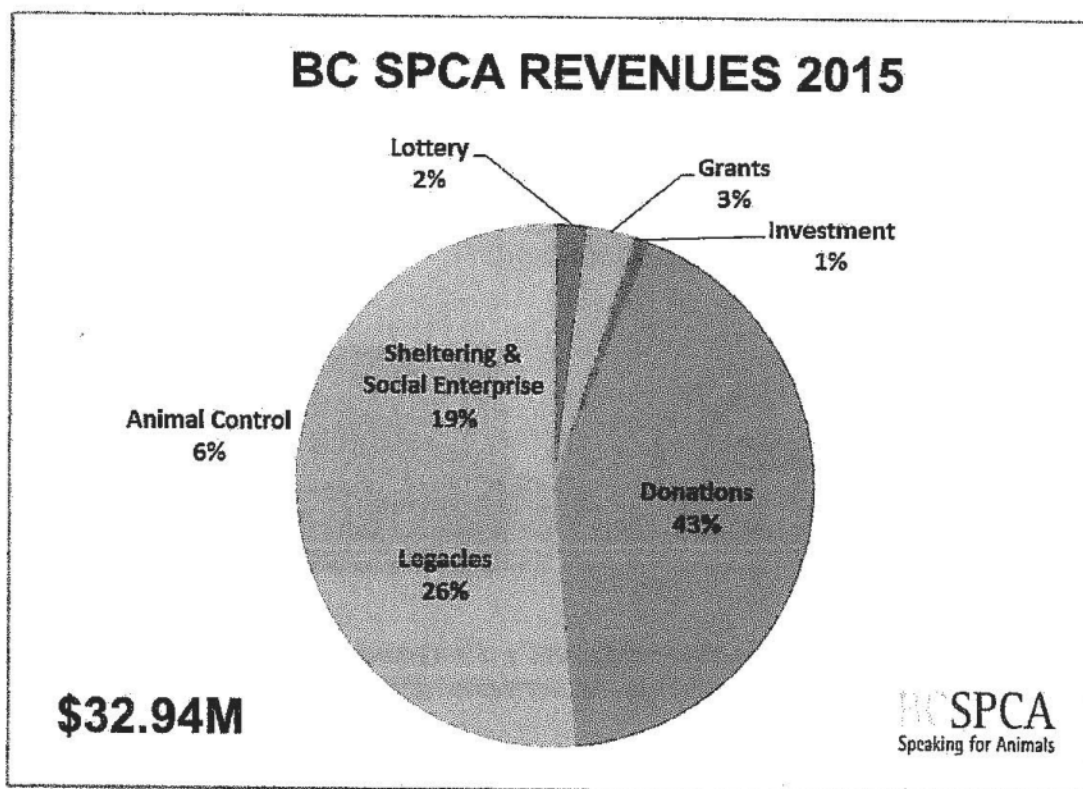
- Implementing up-to-date health and safety practices and being vigilant in researching new health and safety practices to maintain a leadership role within our community.

The Society also publishes its audited financial statements, annual report, annual charitable tax return, list of Directors, Constitution and Bylaws and other governance documents on its website.

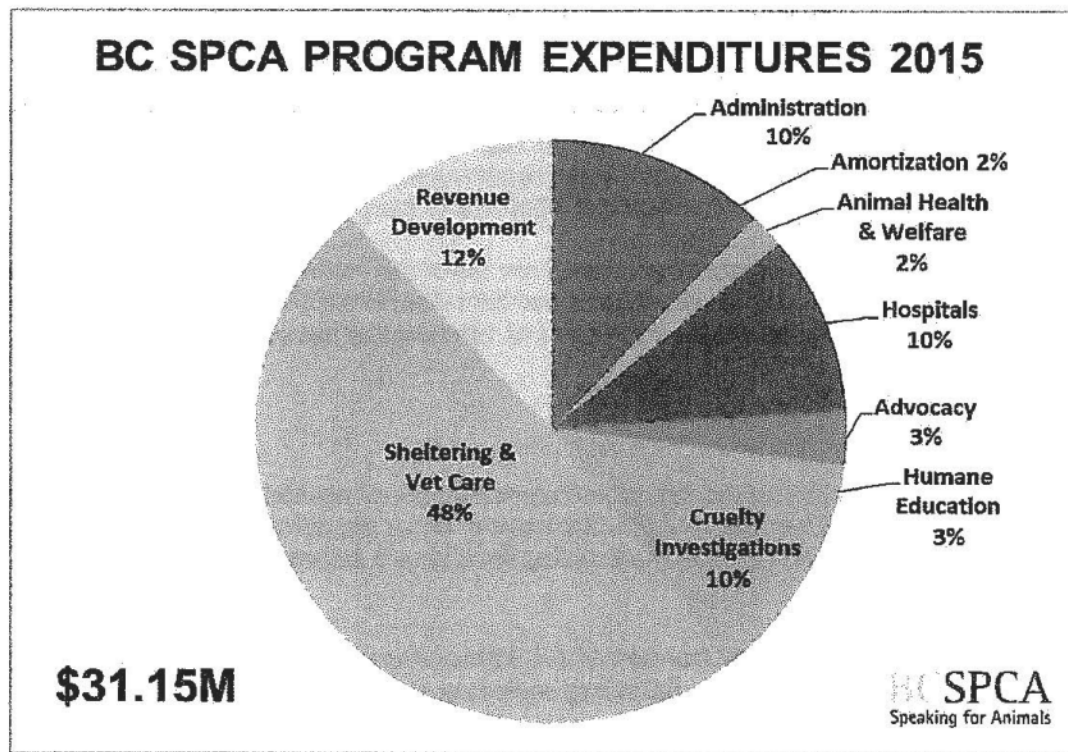
2.5 Growth and Financial Stability

The annual operating budget of the BC SPCA is currently \$33 million and has been growing by approximately 4% - 5% each year.

The BC SPCA is reliant on public donations to support its annual operating budget. Public donations from approximately 80,000 supporters, foundations and corporations account for approximately 70% of annual revenue, while fee-for-service contracts and animal related services account for the remaining 30% of revenue. In 2015, the Government of British Columbia provided \$5 million of capital funding to support facility replacement across the province.



59% of all BC SPCA expenditures are directed to the operation of its various animal shelters and veterinary clinics. Cruelty investigations accounts for almost 10% of expenditures, while prevention activities such as humane education and animal welfare initiatives account for approximately 8% of expenditures. Administration costs are 10%, amortization 2% and revenue development costs account for approximately 12% each year.



The BC SPCA works to a balanced budget each year. The Society annually calculates anticipated revenue for the upcoming year and then ensures all expenditures meet such targets. Thanks to our generous supporters, the Society has consistently reported an operating surplus in each of the past 10 years, with the exception of one year. The operating deficit of \$149K in 2011 was as a direct result of the Whistler-area sled dog investigation, one of the largest animal cruelty investigations in Canada. In some years, operating surpluses have been larger than projected as a result of the sale of assets and/or unexpected receipt of larger legacy gifts. These surpluses have been earmarked for future capital purposes.

This excellent financial performance over the past decade was achieved at the same time as the Society's annual operating expenses grew from \$19.5 million in 2005 to \$31 million in 2015 as a result of expanded programming. The growth in operating expenses was matched by a similar growth in revenue due largely to the increase in donor support from the community.

As at December 31, 2015 the BC SPCA reported total assets of \$51.9 million, of which almost \$14.5 million was classified as property, buildings and equipment. This asset base has consistently grown since 2003 when total assets were reported at \$16.1 million. The growth in assets is due in part to the construction of a number of new community animal centres throughout the province, including new community animal centres in Nanaimo and the addition of large animal recovery and adoption centres in Kelowna and Surrey.

Attached as Appendix "A" are the audited financial statements of the BC SPCA for period ending December 31, 2015.

Section 3.0 - The BC SPCA Facilities Development and Services Plan (FDSP)

The BC SPCA currently operates 41 facilities across the province of British Columbia. A complete list of such facilities is attached as Appendix "B". As highlighted in Appendix B, a significant number of BC SPCA facilities are old with many requiring urgent replacement. By way of example, Vancouver, the largest and busiest animal care facility in the province, is 57 years in age.

In 2013, the Society initiated a comprehensive core review of its facilities, leading the Board of Directors to approve a Facilities Development and Services Plan (FDSP) which provided approval, in principle, for the Society to undertake a total of ten new capital projects over an eight-year period to 2022.

The projects included:

- On central Vancouver Island (Nanaimo), construction of an approximately 7,500 square foot Community Animal Centre⁴ and a 3,000 square foot large animal seizure and adoption barn built in two phases to replace the existing facility at a projected total cost of \$3.81 million;
- In the West Kootenay, construction of a 4,300 square foot Community Animal Centre to serve the West Kootenay and Boundary region at a projected total cost of \$1.95 million;
- In Surrey, construction in stages of a large animal seizure barn, educational facility, adoption centre, cat intake and seizure facility, and controlled alien species holding facility at an amended projected total cost of \$3.7 million⁵;
- In Vancouver construction of a 40,000 square foot Community Animal Centre, Veterinary Hospital and Provincial Office to replace the existing facilities at a projected total cost of \$20.5 million⁶;
- In the Thompson region (Kamloops), construction of an approximately 10,000 square foot Community Animal Centre and spay neuter clinic at a projected total cost of \$4.75 million;
- In North Cariboo (Prince George), construction of an approximately 7,500 square foot Community Animal Centre and large animal seizure and adoption barn at a total cost of \$4.2 million⁷;

⁴ **Community Animal Centre:** A large BC SPCA facility that acts as the focus for all animal events in the community, not only through admission and adoption of animals, but also through provision of community animal services such as dog training, public forums, etc. Community animal centers have a multipurpose room that allows such services to be provided.

⁵ 2014 projected cost \$6.4 million

⁶ Note: Project scope amended due to critical need to include replacement of BC SPCA Provincial Office in scope of work

⁷ 2014 initial projection was \$6.1 million

- In the Fraser Valley, construction of a 10,000 square foot Community Animal Centre and 3,000 square foot Spay Neuter Clinic to replace the existing Abbotsford and Chilliwack shelters at a total projected cost of \$5.25 million⁸;
- In the Shuswap (Salmon Arm), construction of a 4,000 square foot Community Animal Centre at a projected total cost of \$2.6 million;
- In Kelowna, construction of a large animal seizure and adoption barn, companion animal centre expansion and upgrades, and addition of a wildlife centre at a projected total cost of \$1.5 million⁹;
- In the Peace region (Dawson Creek), construction of an approximately 4,500 square foot Community Animal Centre at a projected total cost of \$2.85 million.

A follow-up review of facilities undertaken in 2015 identified the need to include two additional facilities to the Plan, namely those in Campbell River and Cowichan. At the time of the original 2013 review, the facility in Campbell River was not considered due to it being owned by the municipal government, while in Cowichan, the need for structural repairs and enhancements was not identified. The revised Plan now identifies the need for an approximately 3,500 square foot community animal centre in Campbell River at a projected total cost of \$1.95 million and structural repairs and enhancements to the facility in Cowichan at a projected total cost of \$600k.

Total anticipated cost of implementing the Facilities Development and Services Plan is projected at \$53.9¹⁰ million.

A detailed analysis and status report of each facility is included later in this report.

3.1 The Cost of Constructing Community Animal Centres and BC SPCA Expertise in the Area

As mentioned above, the projected cost of constructing these facilities has been calculated at \$53.9 million, based on an average \$450 per square footage cost. The \$450 per square foot includes both hard (construction) and soft (architectural, engineering, landscaping, equipment, etc.) costs and is based on actual costs incurred in constructing the three most recent capital projects undertaken by the BC SPCA, namely the Powell River Community Animal Centre in 2013, the Maple Ridge Community Animal Centre in 2010, and the recently completed Nanaimo and District Community Animal Centre.

The \$450 per square foot cost for construction results in animal centres that fully meet the highest level of animal health and welfare, meet high environmental and efficiency standards and lead to long term operational savings. Such facilities include:

⁸ 2014 projected cost was \$7 million

⁹ 2014 initial projection was \$2.3 million

¹⁰ 2014 projected cost was \$50.2 million

- A ventilation system that permits a minimum 10 full air exchanges per hour;
- Impermeable flooring and walls in animal areas;
- Full spectrum lighting in animal isolation rooms;
- A design that promotes proper sanitation;
- Noise abatement measures throughout the building;
- The installation of energy efficiencies throughout the building;
- Facilities that allow for separation between different species of animals;
- Access to covered outside area for all animals;
- A friendly welcoming environment for members of the public; and
- Multi-purpose rooms that promote a wide range of educational initiatives.

Having completed a number of such projects on time and on budget in the past few years, the BC SPCA has not only developed significant technical expertise in-house but has also built strong associations with the architectural and construction industry and secured significant in-kind donations, making it confident that there would be no cost over runs on such projects.

3.2 Phased Approach to Implementing the FDSP

To successfully implement the largest capital project undertaken in the history of the BC SPCA, the FDSP has been phased over three periods to 2022. In addition, some projects have also been phased over the eight-year period. The first phase, initiated in 2014 and scheduled for completion in 2017, will see a total of six projects undertaken across British Columbia at a projected cost of \$16.0 million.

The first phase of the FDSP (2014 to April 2017) covers facility replacement or upgrades at six facilities (Nanaimo; Kelowna; Surrey; Kamloops; Castlegar; and Dawson Creek) at a total projected cost of \$15.9 million. The Government of British Columbia has very generously provided \$5 million in capital funding for phase one of the FDSP. Through additional support from local governments, foundations and private donors, the BC SPCA will have secured the remaining \$10.9 million required to complete these projects. Projects include:

- Construction of a new Nanaimo and District Community Animal Centre at a total cost of \$3.56 million. The project was completed with an allocation of \$1.3 million in provincial government funding;
- Construction of a large animal recovery and adoption barn in Kelowna at a total cost of \$259k, with \$100k of provincial government funding allocated to complete the project;

- Construction of a large animal recovery and adoption barn, cat seizure facility and education and adoption centre in Surrey at a total cost of \$2.6 million. \$400k in provincial government funding was allocated to complete this project;
- Construction slated for early 2017 of a new Kamloops and District Community Animal Centre and Spay Neuter Clinic to replace existing facilities at a projected cost of \$4.75 million with \$1.5 million of provincial government funding provisionally allocated to the project;
- Construction slated for the spring of 2017 of a new West Kootenay Community Animal Centre in Castlegar to replace the Trail animal shelter at a projected cost of \$1.95 million, with \$900k of provincial government funding allocated to this project; and
- Construction slated for the fall of 2016 of a new South Peace Community Animal Centre to replace the existing animal shelter at a total projected cost of \$2.85 million, with \$900k in provincial government funding tentatively allocated to the project.

Phase two of the FDSP, planning for which is already underway, covers the four-year period from 2017 to 2020 and involves replacement of its three largest and busiest facilities - Vancouver, the Fraser Valley and Prince George - at a total projected cost of \$30 million. The projects include:

- Construction of a new flagship BC SPCA Campus in Vancouver, comprising Community Animal Centre, Veterinary Hospital and Provincial Office to replace the existing 57 year old facility at a total projected cost of \$20.5 million (assumes replacement at existing location);
- Construction of a new Prince George Community Animal Centre to replace the existing animal shelter at a total projected cost of \$4.2 million; and
- Construction of a new Fraser Valley Community Animal Centre to replace the facilities located in Abbotsford and Chilliwack at a total projected cost of \$5.25 million.

The third phase of the Plan, slated for 2019 to 2022, will seek to replace the existing facilities in Salmon Arm and Campbell River and complete the second stage of construction in Nanaimo, Surrey and Kelowna at a total projected cost of \$8 million. Project details include:

- Construction of a new Shuswap Community Animal Centre to replace the existing animal shelter at a total projected cost of \$2.6 million;
- Construction of a new Campbell River Community Animal Centre to replace the existing animal adoption centre at a total projected cost of \$1.95 million;
- Construction of a large animal recovery and adoption barn in Nanaimo at a projected cost of \$250k;
- Facility upgrades to the Kelowna Community Animal Centre at a projected cost of \$1.5 million;

- Facility upgrades in Surrey to temporarily house seized controlled alien species at a projected cost of \$1.1 million; and
- Facility upgrades to the Cowichan animal shelter at a projected cost of \$600k.

Phase 1: 2014 - 2017 Total Capital Costs: \$15.9M BC SPCA contribution: \$10.1M Government of British Columbia contribution: \$5.0M Local government contribution¹¹: \$0.8M			
Location	Completion	Projected Cost (\$M)	Provincial Government Funding (\$M)
Nanaimo (phase 1)	2016	\$3.56	\$1.3
Surrey (phase 1)	2016	\$2.6	\$0.4
West Kootenay	2017	\$1.9	\$0.9
Kelowna (phase 1)	2015	\$0.25	\$0.1
Kamloops	2017	\$4.75	\$1.5
Dawson Creek	2017	\$2.85	\$0.8
Phase 2: 2017-2020 Total Projected Capital Costs: \$30 million (BC SPCA Fundraising: \$20M + Request of Provincial Government: \$10.0M)			
Location	Estimated Completion Date	Projected Cost	
Vancouver	2019	\$20.5 million ¹²	
North Cariboo Region (Prince George)	2020	\$4.2 million	
Fraser Valley	2020	\$5.25 million	

¹¹ Estimated contribution

¹² Assumes redevelopment on current SPCA site

Phase 3: 2019-2022 Total Capital Costs: \$8M (BC SPCA Fundraising: \$5.1M + Request of Provincial Government: \$2.9M)		
Location	Estimated Completion Date	Projected Cost
Nanaimo (phase 2)	2019	\$0.25 million
Shuswap (Salmon Arm)	2021	\$2.6 million
Kelowna	2019	\$1.5 million
Surrey	2019	\$1.1 million
Campbell River	2021	\$1.95 million
Cowichan	2021	\$0.6 million
The total projected cost of the Facilities Development and Services Plan is \$53.9 million.		

3.3 Financial Commitment to the Project by the BC SPCA

With a successful track record of completing capital projects, the Society is confident that, subject to a continued partnership with the Government of British Columbia, it can successfully execute all three phases of the Plan on time and on budget, ensuring the continuation and expansion of animal services as well as a number of other significant benefits for communities, including job creation through construction projects and additional permanent employment positions at these newly constructed facilities.

The BC SPCA is fully committed to raising two-thirds of the total cost of this project (\$35.9 million) through a combination of existing funding designated for capital purposes, capital campaign fundraising, local government contributions and through mortgage financing if necessary.

3.4 Financial Commitment of the Government of British Columbia and Funding Request for Phase Two

The Government of British Columbia has already very generously contributed \$5 million in capital funding for phase one of the FDSP, which has allowed the Society to move forward with six projects identified in the Plan.

The \$5 million in Provincial Government capital funding has been allocated as follows:

Nanaimo	\$1.3 million
Kelowna	\$0.1 million
Surrey	\$0.4 million
Kamloops	\$1.5 million
Dawson Creek	\$0.8 million
Castlegar	\$0.9 million

The BC SPCA respectfully requests funding of \$10 million from the Government of British Columbia as part of the 2017 budget to complete phase two of the Plan.

The BC SPCA would be pleased to explore different opportunities to recognize the contributions of the Government of British Columbia in supporting the Facilities Development and Services Plan.

Without support from the provincial government, the BC SPCA and its donors will not be able to complete its Plan within the time period allocated. This in turn will dramatically and adversely impact the future of other facilities that are not included in the Plan and force a re-evaluation of the number of facilities that the Society is able to operate. In all likelihood, the BC SPCA will be forced to reduce the number of facilities it operates across the province, leading to a reduction in services and job loss in some communities.

To enable the BC SPCA to fully complete the FDSP, a final request for capital support in the amount of \$2.9 million will be made to the provincial government in fiscal 2019 to enable the BC SPCA to fully complete the FDSP, which will bring the total request of the provincial government to \$17.9 million¹³.

3.5 The Case for Support for Further Funding by the Government of British Columbia

Capital funding by the Province for the Facilities Development and Services Plan will not only have lasting benefit for the welfare of animals, but also for the Province of British Columbia and its citizens.

Upon completion, the Plan will:

- Have created numerous temporary construction jobs all across the province over the next seven years¹⁴;

¹³ 2014 submission to Government was for funding of \$25.2 million

¹⁴ A total of 113 contractors and sub-contractors were engaged on the recently completed Nanaimo and District Community Animal Centre

- Create approximately 34 additional permanent full-time and part-time animal care positions across the province¹⁵;
- Create modern, appropriately sized community animal centres for companion animals at numerous locations across the province, which in turn will allow an increase in animal adoptions at the centres and the transfer of homeless and unwanted animals from smaller rural communities to larger urban facilities;
- Reduce the number of unwanted animals in communities through the provision of spay neuter services at high volume sterilization clinics in some communities;
- Establish four large animal seizure barns at central locations across the province for the temporary housing of livestock and horses seized as a result of an animal cruelty investigation;
- Provide for the temporary housing of livestock and other large animals during floods, fires and other emergencies;
- Allow for the creation of a number of temporary triage centres for injured wildlife en route to licensed wildlife rehabilitation centres;
- Allow some facilities to act as a depository of equipment and supplies for professional oiled response that could be used in the event of an oil spill across the province;
- Provide for the temporary housing of Controlled Alien Species seized by conservation officers across the province;
- Demonstrate support for animal welfare for the entire province of British Columbia;
- Increase humane education training for youth across the province, resulting in empathy skills that promote learning, self-esteem and the prevention of violence, such as bullying, animal cruelty and family violence;
- Contribute to safe, humane, liveable communities through BC SPCA collaboration and cross-reporting with other law enforcement authorities, social service agencies and health care providers on issues including family violence, mental health and criminal activity;
- Increase compassionate services for women fleeing domestic violence. Studies in Calgary and Ontario show that more than 50% of women delay leaving an abusive relationship out of concern for their pets, who are also often victims of family violence. BC SPCA branches across the province will open their doors to assist these women by providing temporary free pet boarding/kennelling services, collaborating with women's shelters to provide pet care and helping women find new homes for animals they can no longer keep;

¹⁵ Assumes an increase of 20% in staffing at redeveloped facilities as based on actual staffing increases that occurred in Penticton; Maple Ridge and Powell River

- Create more opportunities for volunteerism and skills training through summer student and internship placements in communities across B.C. The BC SPCA also provides work experience opportunities and volunteer roles that benefit seniors, at-risk youth and persons with disabilities and mental health issues; and
- Increase services for low-income pet guardians seeking veterinary care for their pets, such as free or low-cost spay and neuter surgeries, vaccinations and emergency care.

3.6 Media Interest and Publicity of Initial Government Funding

The initial round of funding has provided great opportunities to engage with the media. We have tracked 36 news stories in print, radio, TV and online that specifically reference the \$5 million in funding received in the 2015 Provincial budget. The Society has celebrated five events related to the FDSP which have garnered approximately seven media stories each: the initial announcement of provincial government funding; the ground-breaking and grand opening of a new Adoption & Recovery Barn in Kelowna, which were attended by the Minister of Agriculture; and the ground-breaking and grand opening of a new Community Animal Centre in Nanaimo, which were attended by the Minister of Social Development and Social Innovation. In addition to traditional media hits, we have also had approximately 5068 likes, shares and comments on our Provincial BC SPCA Facebook page specifically related to government funding posts from our supporter base:



Through platforms like Facebook, Twitter and Instagram we are able to highlight the work our organization has been able to achieve due to the funding provided by the government. As well, we have given special recognition to the government on webpages specific to capital campaigns for FDSP projects. Government representatives have been invited to participate in our related events including speaking, breaking ground and ribbon cuttings. Signage and inclusion in printed event material has been made recognizing support at all FDSP events. Permanent signage recognizing support has been installed at FDSP facilities. We have also utilized more traditional mediums to inform our supporters of the impact of those government dollars. Our biannual magazine called AnimalSense is distributed to 60,000 supporters across BC twice a year, and has featured several stories about the use of government funds in the construction of our new facilities. We also circulate a monthly e-newsletter with a distribution list of 80,000, which keeps our supporters up to date with the BC SPCA's progress and programs. Lastly, we have recognized government support in our Impact Report, which is tailored to our monthly donors and major donors.

Section 4.0 - Phase One Projects (Completed or in Progress)

4.1 Nanaimo (Phase One Completed)

A new 7,500 square foot Community Animal Centre located at 154 Westwood Road in Nanaimo was officially opened to the public by Michelle Stillwell, Minister of Social Development and Social Innovation, on June 17, 2016.

The new Centre, which complies with the Canadian Standards of Care in Animal Shelters¹⁶, was built at a total cost of \$3.56 million.

\$1.3 million of provincial government funding was allocated to this particular project. In addition to waiving development costs of \$369k, the City of Nanaimo contributed \$150k to the capital project.

The new Nanaimo and District Community Animal Centre incorporates modern animal welfare designs such as:

- Shared dog "apartments" to encourage natural movement and socialization;
- Communal indoor-outdoor areas for cats to encourage play;
- Designated areas for temperament and behaviour assessments; and
- Isolation rooms for sick and injured animals.

It also features state-of-the-art heating, air conditioning, and ventilation systems, lighting, noise, and odour control and the most suitable finished surfaces that are easy to clean.

This facility - one that meets the needs of the animals and creates a welcoming place for potential adopters - will make a tremendous impact on how quickly animals find their new families. More adoptions and a shorter length of stay means less stress for the animals and an increase in the amount of animals that the organization will be able to take in and care for.

The new centre will be a hub for transferring neglected and abused animals from other parts of Vancouver Island and beyond between BC SPCA shelters. This network is critical to ensuring animals have the greatest chance for adoption and access to specialized care if required. It will also be a centralized location for housing animals rescued by our cruelty investigators.

The role of the Nanaimo & District Community Animal Centre will go far beyond animal protection and sheltering, offering assistance to the most vulnerable of our citizens as well.

Programs at our new facility include:

- **Assisting victims of domestic violence.** In conjunction with Haven Society, we provide shelter to the beloved pets of people victimized by domestic abuse and who have had to

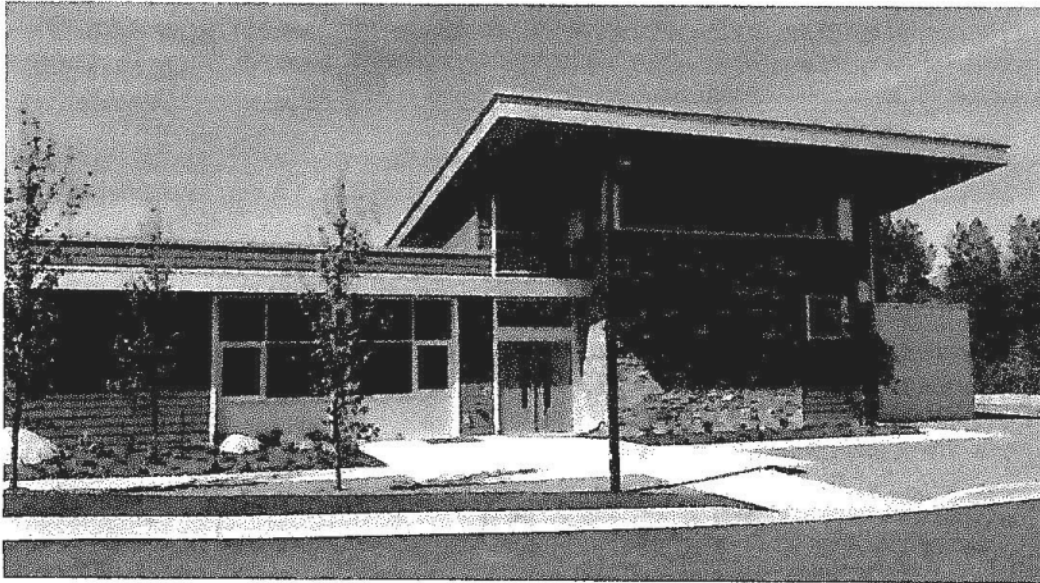
¹⁶ <http://www.sheltervet.org/about/shelter-standards/>

leave their homes. The service enables these women to concentrate on their recovery without worrying about the safety of their pet.

- **Help for at risk youths and adults.** We partner with The John Howard Society of Canada and their restorative justice program to offer volunteer opportunities to at risk youth and adults, giving them alternatives to custodial sentences.
- **Compassionate boarding.** We offer complimentary emergency boarding to Nanaimo residents who find themselves experiencing a personal or health crisis. We work closely with Social Services and the Ministry of Children and Family Development to offer solutions to help support pet guardians and families during difficult times.
- **SNIP Program.** Free and discounted spay neuter assistance is offered to low-income Nanaimo cat guardians. Made possible with the generous support of "Marjorie's Fund" and The City of Nanaimo, the Spay/Neuter Initiative Program (SNIP) fixes hundreds of cats annually, fighting the pet overpopulation crisis and preventing the future suffering of unwanted animals. With the support of local veterinarians, the Nanaimo SPCA also offers discounted services to low-income dog guardians.
- **Special volunteer opportunities.** We offer volunteer opportunities to residents of Edgewood recovery and treatment centre, helping recovering addicts to begin to build and structure a life which supports their return to wellness.
- **Community resource.** Offering space for BC SPCA children's camps, classes, training, education, meetings, and other community uses.



Minister Stilwell and Craig Daniell at the ground-breaking of the new BC SPCA Nanaimo Community Animal Centre on September 1, 2015



New BC SPCA Nanaimo Community Animal Centre on May 11, 2016

4.2 Surrey (Phase One Completed)

The fast pace of population growth, coupled with its urban and rural characteristics, makes Surrey one of the largest and busiest branches in the BC SPCA network. Over the past five years, the request for BC SPCA services and number of animal cruelty complaints involving both companion and farm animals in the Surrey and Fraser Valley region has consistently grown and the Society has not had the capacity to meet this need.

In response, the BC SPCA purchased a 5.5-acre parcel of land on 168th Street in the Cloverdale area of Surrey in 2011 for the purpose of expanding the wide range of animal related services it provides to the community. A ten-year capital plan was subsequently developed for the property with a particular emphasis placed on the housing of seized animals and the expansion of humane education initiatives.

Phase one of the plan, which was completed in early 2016, included:

- Construction of a ten stall multi-purpose large animal recovery and adoption barn to temporarily house large animals seized as a result of a cruelty investigation. The multi-purpose nature of the facility means that it can be easily adapted to also house smaller species of farm animals;
- Construction of two large outdoor paddocks and loafing sheds to allow for large seized animals to receive the exercise and rehabilitation needed to fully recover from distress;
- Facilities to temporarily house small flocks of seized fowl and ducks;

- Construction of a cat intake facility with indoor and outdoor access, built to the Canadian Standards of Care in Animal Shelters, that can temporarily house as many as 70 cats seized as a result of an animal cruelty investigation;
- Construction of a multi-purpose education room enabling the Society to dramatically expand its educational programming for youth and introduce educational programming for adults;
- Construction of an adoption centre for companion animals; and
- Development of an off-leash dog park that will support much needed obedience training programs to be initiated from the facility

Now completed, the Cloverdale facility can:

- Serve as the primary companion and large animal seizure facility in the Lower Mainland and Fraser Valley region;
- Allow for longer term housing and rehabilitation of injured and abused large animals, thereby avoiding the necessity of costlier private boarding facilities;
- Have the capacity to serve as a storage area for wildlife equipment and supplies necessary for professional oiled wildlife responders to attend oil spills in the region;
- Assist the BC SPCA's Drive for Lives program, allowing larger numbers of companion animals to be transferred from rural to urban communities where they have a better opportunity for adoption;
- Allow for the dramatic expansion of youth education programming in the region;
- Act as a staging area for the temporary housing of companion animals and livestock during emergencies; and
- Provide greater opportunities for the adoption of companion animals into the Surrey community.

Phase one of the projected has been completed at a total cost of \$2.6 million, with \$400k of provincial government funding allocated to this project. The cost breakdown is as follows:

Land acquisition	\$ 1.5 million
Large Animal Recovery & Adoption Barn	\$ 0.5 million
Adoption centre and education centre	\$ 0.3 million
Cat intake and seizure facility	\$ 0.3 million



Minister Letnick with Special Provincial Constables at Surrey large animal recovery and adoption barn



Surrey Cat Intake Facility

4.3 Kelowna (Phase One Completed)

On October 14, 2015 Minister of Agriculture, Norm Letnick, officially opened the BC SPCA's new Recovery & Adoption Barn in Kelowna, which will temporarily house horses and farm animals rescued from abusive or neglectful situations in the Okanagan region. The new 2,500-square-foot facility, located adjacent to the existing BC SPCA Kelowna shelter at 3785 Casorso Road, includes six indoor-outdoor stalls, a tack room and hay storage area.

The new barn in Kelowna, built at a cost of \$259k and with a financial contribution of \$100k from the Government of British Columbia, is the second of four BC SPCA large animal barns that are planned across the province (Surrey, Nanaimo and Prince George being the other locations).

The new facility was urgently needed to provide temporary housing for injured and abused farm animals in the region. Farm animals represent a significant focus of the BC SPCA's rescue and advocacy work. Last year we took 117 horses and 143 cattle into care through cruelty investigations and spent in excess of \$200k for boarding, hauling and other costs associated with their care. Having a facility where the Society can care for these animals itself will make a tremendous difference in terms of cost efficiencies and in the direct care provided.



Minister Letnick participating in the ribbon cutting ceremony at the BC SPCA Recovery & Adoption Barn on October 14, 2015



BC SPCA Kelowna Recovery and Adoption Barn

4.4 Kamloops (In Progress)

The BC SPCA Kamloops branch currently operates an animal shelter at 1211 8th street in Kamloops and a leasehold high volume spay neuter clinic at 391A Tranquille Road in Kamloops.

The animal shelter is 29 years old, is 4,000 square feet in size and is in relatively poor condition. The facility was not originally constructed as an animal shelter, making it difficult to prevent the spread of disease and provide good animal welfare. Moreover, there is a lack of appropriate isolation facilities, which has resulted in fairly regular disease outbreaks in the shelter such as ringworm. The facility is also too small to house the large number of animals received on an annual basis.

In December 2015, the Society purchased a 2.2-acre parcel of land at 2815 Tranquille Road, immediately adjacent to the Kamloops airport, for the purpose of constructing a community animal centre and spay neuter clinic to replace the existing facilities. The City of Kamloops has subsequently approved a rezoning of the property to allow for the said construction.

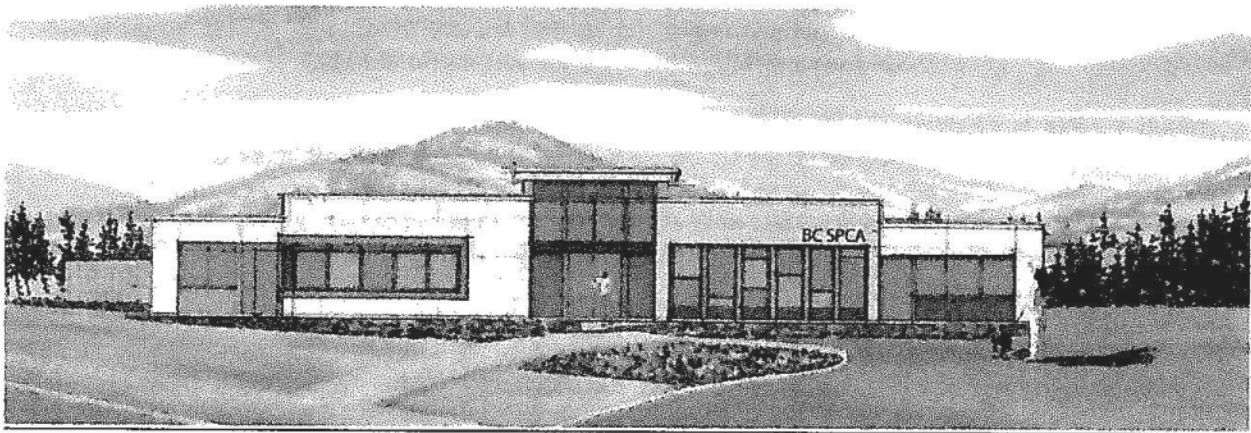
An architectural firm has been retained to provide architectural and engineering services for the facility, which is projected to be approximately 10,000 square feet in size (7,500 for a community animal centre and 2,500 for a spay new clinic) at a total projected cost of \$4.75 million.

The Society has allocated \$1.5 million of the provincial government funding for the Kamloops project. A public capital campaign is already underway with approximately 90% of funding already secured. If required, the Society will draw from its unrestricted reserves to cover any shortfall.

Survey, geotechnical and storm-water studies have been completed. A ground-breaking ceremony is planned for the fall of 2016 with actual construction commencing shortly thereafter. Once the new facility is complete in late 2017, the existing Kamloops shelter and Spay Neuter Clinic will be closed.

Once completed, the new facility will:

- Allow for a much needed expansion of animal care and welfare services throughout the Thompson region;
- Allow for the expansion of youth education programming, such as summer camp programs, with an emphasis on empathy development and responsible animal care;
- With additional support, become a temporary staging area for companion animals and livestock during emergencies;
- Create opportunities for the Society to offer much sought after programs such as obedience training and pet first aid courses in the region;
- Allow for greater partnerships between the BC SPCA and women's shelters in the region, allowing women fleeing domestic violence to house their animals at the Centre; and
- Significantly expand the number of volunteer opportunities at the Centre.



Concept of new Kamloops & District Community Animal Centre

4.5 Castlegar (In Progress)

The Trail and District branch is located at 7700 Highway 3B in Trail and serves the communities of Grand Forks, Rossland, Castlegar, Montrose, Fruitvale and Trail.

The current building, which is 33 years old and 2,800 square feet in size, is in extremely poor condition and must be replaced as it fails to meet animal welfare standards prescribed by the ASV guidelines and is unacceptable from a human health and safety perspective.

In the summer of 2015, the BC SPCA reached an agreement with the City of Castlegar whereby the City would donate a 1.05-acre parcel of land located at the intersection of Highway 3 and 3A to the BC SPCA, subject to the BC SPCA constructing a community animal centre on the said

property. The Society is currently working with the City to secure title to the project before commencing construction.

In the interim, an architectural firm has been retained to provide architectural and engineering services for the facility, which is projected to be approximately 4,370 square foot community animal centre at a total projected cost of \$1.95 million (includes value of property donation).

A ground-breaking ceremony is planned for the fall of 2016, with actual construction commencing in early 2017 and a project completion date before the end of 2017. Once the new facility is complete, the facility in Trail will be closed.

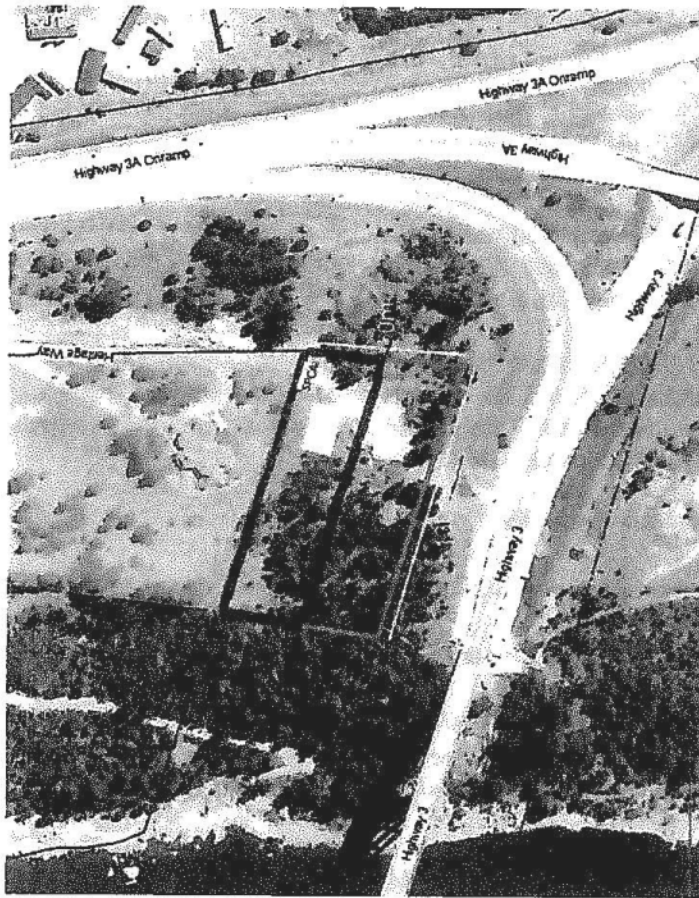
The Society has allocated \$0.9 million of the provincial government funding for the Castlegar project. A public capital campaign will be launched in the summer, although approximately 80% of funding is already secured. If required, the Society will draw from its unrestricted reserves or borrow to cover any shortfall in capital funding.

Once constructed, the new facility will:

- Serve as the primary companion animal seizure centre for the region;
- Provide temporary shelter for companion animals in distress throughout the region;
- Act as a transfer hub for the entire Kootenay region, allowing large numbers of adoptable animals to be transferred from areas with smaller populations to areas with larger populations, thereby significantly reducing the threat of euthanasia of adoptable animals; and
- Permit the introduction of much needed and requested youth humane education programming in the region.



Current BC SPCA Trail Regional Branch



Aerial photograph depicting land for proposed Castlegar facility

4.6 Dawson Creek (In Progress)

The South Peace branch of the BC SPCA is located at 637 114th street in Dawson Creek and serves the communities of Dawson Creek, Peace Coupe, Tumbler Ridge, Chetwynd, Gwillam, and Ground Birch.

The current facility, which is 38 years old and 1,560 square feet in size, is in poor condition, too small and must be replaced as it fails to meet animal welfare standards prescribed by the Canadian Standards of Care in Animal Shelters and is unacceptable from a human health and safety perspective.

In the summer of 2015, the BC SPCA reached agreement with the City of Dawson Creek whereby the City would donate an approximately 5-acre parcel of land located at 11418 Third Street to the BC SPCA, subject to the BC SPCA constructing a community animal centre on the said property. The Society is currently working with the City to secure title to the project before commencing construction, although geotechnical work has been completed.

In the interim, an architectural firm has been retained to provide architectural and engineering services for the facility, which is projected to be an approximately 5,000 square foot community animal centre at a total projected cost of \$2.85 million (includes value of property donation).

A ground-breaking ceremony is planned for the fall of 2016, with actual construction commencing in early 2017 and a project completion date by the end of 2017. Once the new facility is complete, the existing facility in Dawson Creek will be closed, with proceeds of the sale being directed to the building fund.

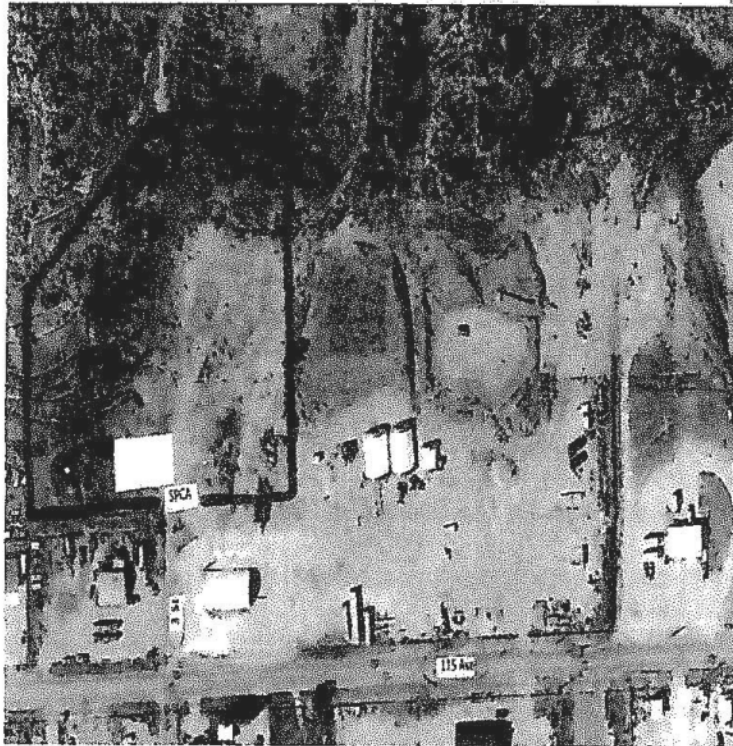
The Society has allocated \$0.8 million of the provincial government funding for the Dawson Creek project. A public capital campaign will be launched in the late summer, although approximately 90% of funding is already secured. If required, the Society will draw from its unrestricted reserves to cover any shortfall in capital funding.

Once completed, the new facility will:

- Provide animal control services to the South Peace region;
- Serve as the primary companion seizure centre for the region;
- Provide temporary shelter for companion animals in distress throughout the region;
- Act as a transfer hub for the Peace region, allowing adoptable animals to be transferred from the region to areas with larger populations, thereby significantly reducing the threat of euthanasia of adoptable animals; and
- Permit the introduction of much needed and requested youth humane education programming in the region.



Current BC SPCA South Peace Branch



Aerial photograph of surveyed land for proposed new facility in Dawson Creek

Section 5.0 - Phase Two Projects (Provincial Government Funding Request)

5.1 Vancouver

The new flagship BC SPCA Campus in Vancouver will be a complex comprised of the Community Animal Centre, Veterinary Hospital and Provincial Office. The Society's Vancouver shelter and Veterinary Hospital are located at 1205 East 7th Avenue in Vancouver, immediately adjacent to the Society's Provincial Office, which is located at 1245 East 7th Avenue in Vancouver.

The BC SPCA has full title to both the 1205 and 1245 East 7th properties. Both the shelter building (57 years old) and the Hospital building (40 years old) are in poor condition and not large or modern enough to meet the needs of the community in Metro Vancouver. Because of their age and size, neither facility can provide a full range of services to the public and accordingly need to be replaced. The Provincial Office building is 37 years old and in adequate condition, but is too small to accommodate the number of services provided from the facility, including cruelty investigations; education initiatives; animal health and welfare; wildlife and farm programs, in addition to the overall management and administration services it provides.

The Vancouver facility houses the highest number of animals on an annual basis in the province and is often the go-to animal facility to care for companion animals seized as a result of a cruelty

investigation, such as the Langley “puppy-mill” investigation in early 2016. Vancouver-based BC SPCA special constables respond to more than 600 cruelty calls each year, necessitating the regular seizure and rescue of a large number of animals. This large call volume reinforces the need for such a facility.

The Vancouver Hospital is a full-service public veterinary hospital that, amongst other things, provides a full range of reduced cost or free veterinary services to low income pet guardians, including residents of the Downtown Eastside and the many feral cat groups in the region. The growth in population in the city itself and in the region as a whole is placing tremendous pressure on both the hospital and the shelter and because of the facilities’ age and conditions, the Society has reached a physical capacity and cannot accommodate new clients seeking reduced cost or free services.

Due to their age and condition, coupled with the fact that all three facilities do not have the physical space requirements to meet existing needs of the community and the province, it is imperative that the Society replace the shelter, hospital and provincial office. This project was originally identified as the having the single greatest priority in the FDSP but, due to cost, complexity of the project and wanting to also move forward elsewhere in the province, the Vancouver redevelopment project was deferred to phase two of the Plan. While the Society has made great progress with the projects in phase one, the challenges faced in Vancouver continue to grow and cannot be postponed any longer.

A recent needs assessment undertaken by the BC SPCA identified the need for an approximately 40,000 square foot facility consisting of a 17,500 square foot community animal centre; a 7,500 square foot full-service veterinary hospital; and a 15,000 square foot provincial office, at a projected construction cost of \$20.5 million (excludes land acquisition). As the flagship of the BC SPCA, this new facility would include features found at other new constructed community animal centres such as shared dog apartments, indoor/outdoor access for cats and multi-purpose rooms for youth education and obedience training, but would also include many of the latest innovations in animal welfare which would allow the new Hospital to become a teaching facility accredited with the various veterinary colleges across Canada; the animal centre to significantly strengthen recently developed partnerships with post-secondary academic institutions such as UBC, SFU and UVic; and allow its provincial office to expand services in critical areas that it simply has no capacity to do currently. A 40,000 square foot Vancouver facility would be similar in size to facilities recently completed in Edmonton, Ottawa and Winnipeg.

The greatest challenge that continues to be faced by the BC SPCA with this particular project is securing the appropriately sized, zoned and priced property on which to build the new facility. Three construction options have been considered, including redevelopment at the current location; a retrofit of an existing structure elsewhere in Vancouver; and acquisition of land and subsequent construction of a new facility on the property. All three options remain under active consideration, although each has its strengths and disadvantages. The option most under consideration and used for the purposes of this report is redevelopment of the 1205 East 7th Avenue property.

A redevelopment of property at 1205 East 7th Avenue has a number of significant benefits, including an excellent location; appropriate size and current zoning; proximity to public transport; and a neighbourhood that is already familiar with the work of the BC SPCA. The drawback of pursuing a redevelopment on the existing site includes the significant challenge of temporarily

relocating the animal shelter and hospital during the construction period. The BC SPCA is currently investigating the possibility of pursuing a phased approach to the construction that will allow one of either the Hospital or animal shelter to remain open during the first phase of construction and then subsequently move into the new facility, thereby avoiding relocation for one of the services.

Funding a project of this nature provides numerous obstacles for the BC SPCA. As a provincial organization that provides services across British Columbia, the Society is continuously mindful that it cannot concentrate or be perceived to be concentrating the majority of its resources to Vancouver. That said, the BC SPCA has been preparing for this project for some time and is confident that, with a second investment from the Government of British Columbia, it will secure the necessary funding to successfully complete this very ambitious but greatly needed project.

The anticipated \$20.5 million funding for the project includes:

- disposition of the 1245 East 7th Avenue property (current provincial office) with proceeds of sale, estimated at \$5 million, directed to the project;
- \$3 million in current reserves specifically designated to the project;
- \$2.5 million lead gift confirmed from a Vancouver-based philanthropist;
- \$2.5 million in existing unrestricted reserves that will be allocated to the project by way of resolution of the Board of Directors;
- \$2.5 million BC SPCA capital campaign undertaken once 85% of funding is secured quietly from major donors, which would include requests for local government support for project; and
- **\$5 million contribution from the Government of British Columbia.**

It is possible that the local governments may wish to amalgamate their services with those of the BC SPCA in a new facility. While this will increase the square footage of the building, any additional costs will be the responsibility of the local government. At the same time, such an arrangement may result in savings for both the BC SPCA and the local government as duplicate services are eliminated and costs are shared.

In terms of timing for the project, preliminary design work will continue throughout 2016 and early 2017. In the event that the Government of British Columbia agrees to support this project as part of its 2017/18 budget, a public announcement can be made in March 2017, with a ground-breaking ceremony planned for the end of 2017, and construction commencing in 2018 with completion of the project during 2019.

Once completed, the new facility will:

- Be a beacon for animal welfare in our province and house the thought-leadership for the BC SPCA's work in companion animal welfare, farm animal welfare, wild animal welfare as well as humane education and cruelty investigations;
- Serve as the primary facility for the surrender, sheltering and adoption of companion animals in the Lower Mainland;

- Provide expanded opportunities to house companion animal seized as a result of an animal cruelty investigation;
- Act as a primary end-point in the transfer of companion animals from rural communities with large animal populations to large urban communities where they can be adopted, thereby avoiding the need for euthanasia of adoptable companion animals;
- Provide extended behaviour training support for companion animals throughout the region;
- Provide expanded youth education programming, such as summer camp programs, with an emphasis on empathy development and responsible animal care;
- Create opportunities for the Society to offer the public programs such as obedience training and pet first aid courses;
- Allow for greater partnerships between the BC SPCA and women's shelters in the region, allowing women fleeing domestic violence to temporarily house their animals at the Centre;
- Allow expanded and specialized veterinary services to be provided from the new hospital, including increased services to low-income pet guardians living in the downtown Eastside of Vancouver;
- Allow for the expansion of outreach programs such as Charlie's Food Bank in the downtown Eastside;
- Allow for increased partnerships with post-secondary academic institutions in the area of veterinary medicine and animal welfare;
- Allow for the expansion of provincial services, including pet identification through the BC Pet Registry and the development of wildlife removal standards; and
- Significantly expand the number of volunteer opportunities at the Centre.



Current BC SPCA Vancouver Branch



Dog at the BC SPCA Vancouver Branch

5.2 Prince George

The North Cariboo branch of the BC SPCA is situated at 4011 Lansdowne Road in Prince George and serves the communities of Prince George, Hixon, and McLeod Lake. The BC SPCA also operates a high volume spay neuter clinic in Prince George at 1909 Queensway in Prince George that performs in excess of 2,500 sterilizations annually.

The BC SPCA has full title to the spay neuter clinic, but title to both land and building that house the animal shelter vests with the City of Prince George and occupation by the BC SPCA is subject to continuation of the City's animal control contract. The facility is 4,966 square feet and although in fair condition it was not built to adequately house cats and has no facilities to house larger animals. There are also no facilities to house large seized animals.

The North Cariboo facility is the fifth busiest animal shelter in terms of annual animal intake. However, it is important to note that a large portion of such animals come in through the animal control contract.

It is imperative that the Society have a physical presence in Prince George. With its central location and gateway to the northern area of the province, the facility plays a crucial role in the transfer program and in the area of cruelty investigations. In addition, despite the opening of the spay neuter clinic, Prince George still has a high population of unwanted animals.

The fact that occupation of the current facility is tied to the animal control contract poses significant challenges for the Society. Loss of the contract means an automatic loss of a physical sheltering presence in Prince George, which is an unacceptable situation for the Society. The lease does not contain an option to purchase and in any event the facility is too small to house the current number of animals and is not designed to properly house cats.

Any facility in Prince George would need to incorporate sufficient space to house seized animals and animals that are to be part of the transfer program. As much as possible, retail opportunities must be explored to generate additional operational funding. Since the spay neuter clinic is self-

sustaining and owned by the Society, we are not anticipating the need to construct a replacement facility at the same time as the new community animal centre.

Working with the City of Prince George and the Ministry of Forests, Lands and Natural Resource Operations, a 2.91-acre property located at the corner of Foothills Boulevard and 18th Avenue on the western edge of Prince George has been identified as the future home for the BC SPCA in Prince George. The City of Prince George has recently rezoned the property to allow for construction of a BC SPCA facility, which will now allow for the conclusion of a Crown lease on the said property.

At this time, the City of Prince George does not wish to participate in a joint venture with the Society and as such the BC SPCA is working on the assumption that animal control services will not be provided from the new facility. As a result, the approximate anticipated size of a new Prince George facility would be approximately 11,000 square feet, which would consist of the following:

- A 7,500 square foot community animal centre with facilities for seized companion animals; and
- A 2,500 square foot large animal seizure barn.

The anticipated total cost of this project is expected to be \$4.2 million.

In terms of timeline, property acquisition should occur before the end of 2016, which would be followed by approximately two years of planning and design. Construction would commence likely in the summer of 2019 and with completing taking place in 2020.

The anticipated \$4.2 million funding for the project includes:

- \$1.0 million in existing unrestricted reserves that will be allocated to the project by way of resolution of the Board of Directors;

- \$ 0.75 million BC SPCA capital campaign undertaken once 80% of funding secured, which would include requests for local government support for project; and
- **\$2.5 million contribution from the Government of British Columbia.**

Once completed, the new facility will:

- Serve as the primary companion and large animal seizure centre for the Cariboo region;
- Allow for a much needed expansion of animal care and welfare services throughout the Cariboo region;
- Allow for the expansion of youth education programming, such as summer camp programs, with an emphasis on empathy development and responsible animal care;
- Create opportunities for the Society to offer much sought after programs such as obedience training and pet first aid courses in the region;
- Allow for greater partnerships between the BC SPCA and women's shelters in the region, allowing women fleeing domestic violence to house their animals at the Centre; and
- Significantly expand the number of volunteer opportunities at the Centre.



BC SPCA North Cariboo District Branch



BC SPCA Prince George Spay Neuter Clinic

5.3 Fraser Valley

The BC SPCA operates two branches in the Fraser Valley. The Abbotsford branch is located at 34312 Industrial Way in Abbotsford and serves the Langley, Abbotsford and Mission areas, while the Chilliwack branch, located at 6797 Hopedale Road in Chilliwack, provides services to Chilliwack and surrounding areas and acts as the primary animal protection and transfer centre for the BC SPCA in the Lower Mainland and Fraser Valley.

The Society has title to both the land and buildings in Abbotsford and Chilliwack. The Abbotsford facility is 27 years old and is in fair condition having been renovated 12 years ago. The Chilliwack facility is 54 years old and despite undergoing small periodic renovations is in poor condition.

Considering the rapid population growth in the Fraser Valley and combined animal intake numbers which place the region in the top three busiest facilities in the province, there is no doubt that the Society requires a physical presence in the Fraser Valley.

Both facilities have come to the end of their lifecycle; however, it is not necessary to replace both facilities. Given the close proximity of the two communities, it makes both good business and animal welfare sense to construct one larger Fraser Valley facility to replace both Abbotsford and Chilliwack. Such a facility would be able to handle animal populations in both communities.

The Society has initiated discussions with the City of Abbotsford and the City of Chilliwack to identify an appropriately sized and zoned parcel of land that could serve as a future home of the Fraser Valley branch. The Society will be working to secure the land by way of donation from one of the cities.

Once an appropriately sized and zoned parcel of land has been acquired, the BC SPCA intends to construct an approximately 8,000 square foot Community Animal Centre and small surgical spay neuter suite to replace the existing facilities in Abbotsford and Chilliwack at a total projected cost of \$5.25 million.

The anticipated \$5.25 million funding for the project includes:

- Disposition of the current Abbotsford and Chilliwack properties, with proceeds of sale, estimated at \$1.0 million, directed to the project;
- \$1.0 million donation of land by either City of Abbotsford or Chilliwack (estimated);
- \$ 0.75 million BC SPCA capital campaign undertaken once 80% of funding is secured, which would include requests for local government support for project; and
- **\$2.5 million contribution from the Government of British Columbia.**

Once completed, the new facility will:

- Allow for a much needed expansion of animal care and welfare services in the Fraser Valley;
- Provide additional facilities to house seized companion animals in the region;
- Provide expanded spay neuter services to the animals of low-income British Columbians;
- Allow for the expansion of youth education programming, such as summer camp programs, with an emphasis on empathy development;
- Create opportunities for the Society to offer much sought after programs such as obedience training and pet first aid courses in the region;

- Allow for greater partnerships between the BC SPCA and women's shelters in the region, allowing women fleeing domestic violence to house their animals at the Centre;
- Significantly expand the number of volunteers opportunities at the Centre; and
- Result in the creation of 15 temporary construction jobs and an additional 5 permanent full time and part time positions at the new Centre.



BC SPCA Chilliwack Branch



BC SPCA Abbotsford Branch

Section 6.0 - Phase Three Projects: (Provincial Government Funding Not Sought at This Time)

6.1 Salmon Arm

The Shuswap branch of the BC SPCA is located at 5850 Auto Road SE in the industrial sector of Salmon Arm. The branch provides a wide range of animal related services to the Shuswap region.

The current facility is an approximately 3,400 square foot metal frame building that is 27 years old. It is in poor condition and lacks appropriate isolation facilities for both dogs and cats. The BC SPCA has full title to both lands and buildings.

The BC SPCA intends to construct a 4,000 square foot Community Animal Centre in Salmon Arm to serve the Shuswap region at a projected cost of \$2.6 million.

Although the branch is at the midpoint in terms of the number of animals it cares for each year, it is important to note that the branch does not perform animal control and is the only animal shelter in the community. There is also a significant cat overpopulation problem in the community. The poor state of the current facility, coupled with the number of unwanted animals,

necessitate the need for a new facility. A new facility in Salmon Arm would also ease the burden on the facility in Vernon.

In terms of timeline, land acquisition will be initiated in 2017, with discussions planned with the City of Salmon Arm over a possible donation of land. Detailed planning would commence in 2019, with a goal of completing construction in 2021.

Once completed, the new facility will:

- Allow for a much needed expansion of animal care and welfare services in the Shuswap;
- Provide additional facilities to house seized companion animals in the region;
- Allow for the expansion of youth education programming, such as summer camp programs, with an emphasis on empathy development;
- Create opportunities for the Society to offer much sought after programs such as obedience training and pet first aid courses in the region;
- Allow for greater partnerships between the BC SPCA and women's shelters in the region, allowing women fleeing domestic violence to house their animals at the Centre; and
- Significantly expand the number of volunteer opportunities at the Centre.

Projected cost of new facility:

The cost of constructing the new facility is projected to be \$2.6 million, comprised as follows:

Land acquisition costs:	\$ 750,000 (estimated)
Community Animal Centre:	\$ 1,800,000



BC SPCA Shuswap Branch

6.2 Kelowna (Phase Two)

The Kelowna branch of the BC SPCA is located at 3785 Casorso Road in Kelowna. The communities served include Kelowna, West Kelowna, Fintry, Lake Country, Rutland, Joe Rich, Okanagan Mission, and Peachland.

Three buildings are located on the property:

- An approximately 5,000 square feet animal shelter in good condition as a result of regular upgrades;
- A 3,600 square foot multi-purpose education room was constructed in 2012 to meet the growing demand for youth humane education programs in the Kelowna area, as well as to give the BC SPCA the ability to provide programs such as basic obedience training for guardians of newly adopted animals; and
- A 2,300 square foot Recovery and Adoption Barn built in 2015 as part of phase one of the FDSP.

The greater Kelowna area is currently facing two significant animal welfare challenges:

- There are currently no facilities to provide temporary care and rehabilitation to injured native wildlife, with the result that injured wildlife are being left to suffer and die unnecessary or alternatively are taken into care by well-meaning but untrained individuals, contrary to the Wildlife Act; and

- There is still a significant companion animal over-population crisis in the region and the current capacity of the community animal centre in Kelowna is insufficient to meet the number of animals that need to be admitted to the facility.

To overcome these problems, the BC SPCA proposes to expand the existing facilities by an additional 3,500 square feet. The expansion would allow for the construction of a triage centre for injured wildlife and additional kennels and rooms to appropriately house the number of companion animals that are being presented at the shelter.

The total cost of undertaking the expansion is projected at \$1.5 million.

Once completed, the expanded facility will:

- Establish a triage centre and rehabilitation centre for injured wildlife, so that they can be stabilized for 24-48 hours prior to transportation to an accredited wildlife centre, be humanely euthanized if in critical distress, or rehabilitated and released in accordance with the Wildlife Act;
- Provide much needed additional capacity to house seized companion animals from the Okanagan region;
- Provide additional capacity for the BC SPCA to further expand its partnership with local government in the animal services area, including through additional adoption capacity; and
- Allow for greater partnerships between the BC SPCA and women's shelters in the region, allowing women fleeing domestic violence to house their animals at the Centre.

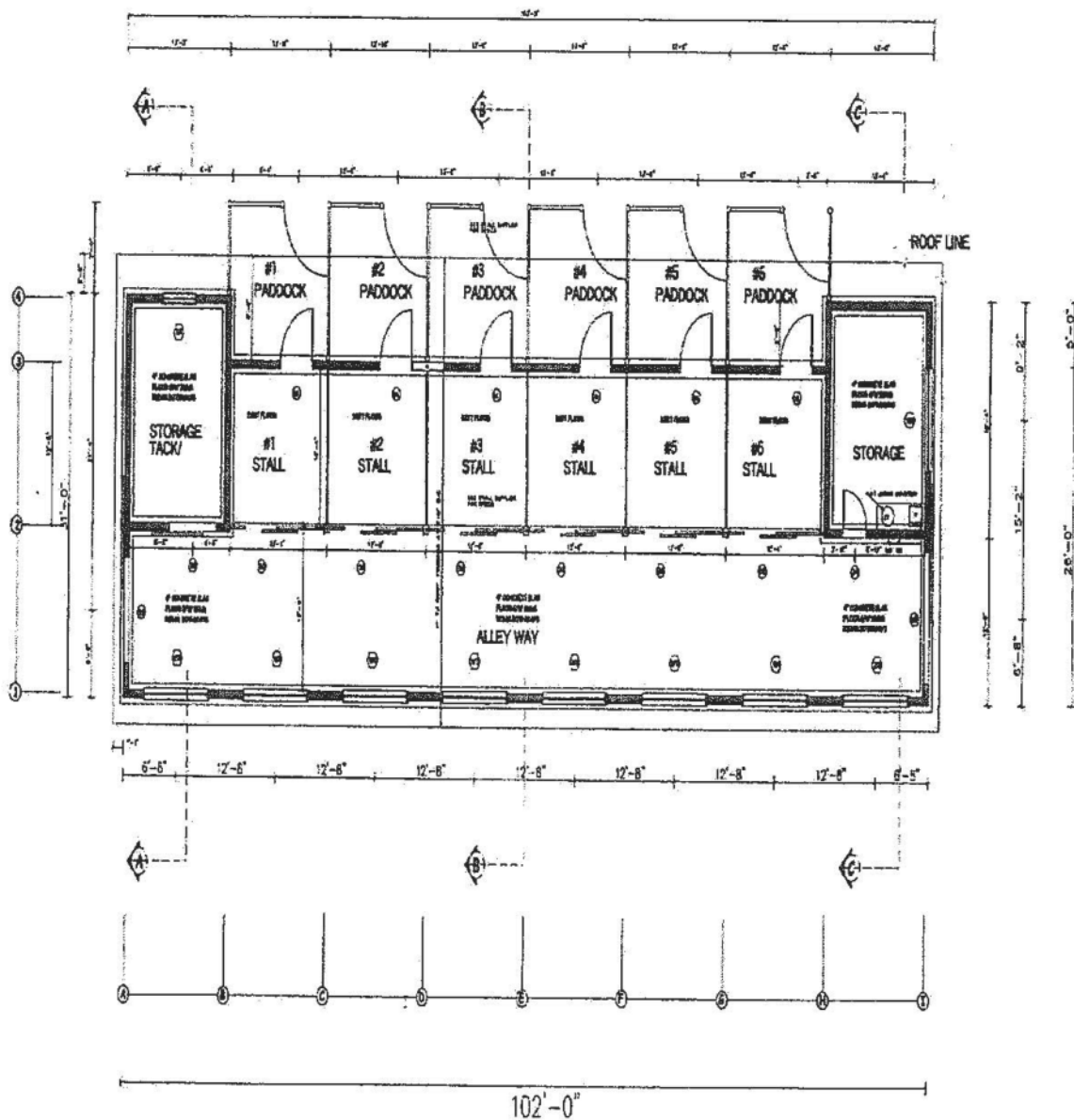
6.3 Nanaimo (Phase Two)

A new 7,500 square foot community animal centre for the Nanaimo and District branch was officially opened by Minister Michelle Stillwell on June 17, 2016. The new facility is located on 11.3 acres at 154 Westwood Road in Nanaimo.

A second phase is planned for the new Nanaimo Centre, namely the construction of a 2,300 square foot six stall multi-purpose large animal recovery and adoption barn and outdoor paddocks in 2019/20. The barn will be located immediately adjacent to the new community animal centre and will temporarily house large animals seized throughout Vancouver Island as a result of a cruelty investigation.

Once completed, the Society will have constructed four recovery and adoption barns, one in each of its operational regions, and will then have the capacity to temporarily house a majority of large animals seized as a result of an animal cruelty investigation.

The cost of constructing the barn is projected at \$250k.



Conceptual sketch of the Nanaimo horse barn

6.4 Surrey (Phase Two)

Phase one of the BC SPCA's Surrey facility, located at 16748 50th Avenue in Surrey, included construction of a large animal recovery and adoption barn and paddocks; cat intake facility; multi-purpose humane education room and adoption centre.

A second phase is planned for the existing Surrey facility in 2020 that will include construction of an approximately 2,500 square foot purpose built facility that will allow for:

- The temporary housing of controlled alien species;
- Additional multi-purpose space to accommodate anticipated growth in youth education activities; and
- Facilities to store oil spill response equipment and animal handling equipment required for emergency response, including flooding and forest fires.

BC SPCA Special Provincial Constables and Conservation Officers are regularly called out to investigate the living conditions of a variety of controlled alien species (CAS). Currently, there are no facilities at all to temporarily house these animals, with the result that many are housed at veterinary offices across the province. A purpose built facility to house CAS animals is urgently required. The facility in Surrey is sufficiently large enough to accommodate this need.

Likewise, there are currently significant challenges to the storing of oil spill response equipment needed to rehabilitate wildlife as a result of an oil spill. Such equipment is currently stored on private property, which presents challenges to professional oiled wildlife responders wishing to access the equipment at very short notice. The facility in Surrey is sufficiently large enough to accommodate this need.

Education of youth and adults will continue to be one of the core priorities for the Society in the years ahead. Accordingly, it is important that the Society have the facilities available in Surrey to meet this growing need. A second multi-purpose education room will be required within the next five years.

The projected cost to complete phase two is \$1.1 million.

6.5 Campbell River

The Campbell River branch of the BC SPCA is located at 891 13th Avenue in Campbell River. The facility is a store-front adoption centre that is leased by the BC SPCA. The facility is in good condition, but at 1,868 square feet, is simply too small to meet the animal welfare needs of Campbell River and surrounding communities.

The BC SPCA would like to replace its store-front adoption centre with an approximately 3,600 square foot Community Animal Centre that can provide a full range of animal welfare services to the community including:

- Facilities to house seized companion animals;
- Educational programs for youth and adults;
- Facilities that will allow residents to surrender companion animals to the BC SPCA;

- Acting as a staging point to transfer animals from communities' north of Campbell River to Nanaimo and Victoria; and
- Allowing for compassionate boarding of animals for individuals fleeing domestic violence.

The City of Campbell River has already indicated its willingness to support the BC SPCA with this initiative. Although nothing has been finalized, the City has expressed openness to a donation of land for a new facility.

Once completed, the new facility will:

- Allow for a much needed expansion of animal care and welfare services in the Campbell River area;
- Provide additional facilities to house seized companion animals in the region;
- Allow for the expansion of youth education programming, such as summer camp programs, with an emphasis on empathy development;
- Create opportunities for the Society to offer much sought after programs such as obedience training and pet first aid courses in the region;
- Allow for greater partnerships between the BC SPCA and women's shelters in the region, allowing women fleeing domestic violence to house their animals at the Centre; and
- Significantly expand the number of volunteer opportunities at the Centre.

The projected cost of constructing the new facility is projected to be \$1.95 million, comprised as follows:

Land acquisition costs:	\$ 350,000 (estimated, with possible donation)
Construction costs:	\$ 1,600,000



BC SPCA Campbell River Community Animal Centre

6.6 Cowichan

The Cowichan branch of the BC SPCA is located at 7550 Bell McKinnon Road in Duncan and serves communities throughout the Cowichan Valley. The facility is approximately 5,900 square feet in size, 19 years old and in fair condition. The BC SPCA has title to both the land and buildings.

Because of its more rural location, the branch is not as busy as other branches across Vancouver Island. This has allowed the branch to accept and rehabilitate more dogs with behaviour challenges than other branches across Vancouver Island. As a result, the branch has developed expertise in this area.

Recognizing that an increasing number of dogs entering BC SPCA shelters require behaviour remediation and may require additional time in our facilities, the BC SPCA wishes to undertake a significant renovation project at its Cowichan facility that will bring the facility up to the Canadian Standards of Care in Animal Shelters and allow it to become a centre of excellence for the remediation of such dogs. This will also require the facility to be enlarged from its current footprint.

Renovations will also include a multi-purpose education room that will permit the Society to expand its youth education programming throughout the Cowichan Valley.

Once completed, the new facility will:

- Create opportunities for the Society to offer much needed behaviour remediation programs for BC SPCA animals entering the system, thereby resulting in an increasing number of adoptions, as well as programs such as obedience training;
- Provide additional facilities to house seized companion animals in the Cowichan region;
- Allow for the expansion of youth education programming, such as summer camp programs, with an emphasis on empathy development;
- Allow for greater partnerships between the BC SPCA and women's shelters in the region, allowing women fleeing domestic violence to house their animals at the Centre; and
- Significantly expand the number of volunteer opportunities at the Centre.

The cost of completing the renovation is projected to be \$600k.



BC SPCA Cowichan & District

Section 7.0 - Thank You to the Government of British Columbia

The BC SPCA wishes to thank the Government of British Columbia for its support of the Facilities Development and Services Plan and for its consideration of this proposal to continue our successful partnership.