



PECC ACTIVATION DAY NO. 1

NOVEMBER 15, 2021

Hazard(s): Atmospheric River Storm

Operational Period: November 15, 2021, 08:30 hrs to Closing

Next Sitrep will be issued: November 16, 2021

Primary PECC E-mail:^{s.17}

Primary PECC Phone:^{s.17}

Information current as of Nov 15, 2021 at 17:00h

Note: Information contained in this situation report is for operational purposes only. The contained information is not meant for external dissemination. If you wish to use information contained herein for release, you must clear it with the PECC Director.

PROVINCIAL SITUATION

The EMBC Provincial Emergency Coordination Centre (PECC) is activated in support of three Provincial Regional Emergency Operations Centres (PREOCs) and a widespread atmospheric river storm event that has resulted in multiple flooding, landslide, mudslide, power outage and other incidents and human consequence impacts across the BC southern coastal and interior regions.

The storm has damaged, blocked, and impacted multiple roadways, causing widespread road closures and stranding hundreds of motorists overnight on Nov. 14, 2021. Rescue efforts have continued throughout Nov. 15, 2021, and reports indicated all stranded motorists have now been able to seek shelter and appropriate supports in nearby communities.

First Nations and Local Authority communities have seen widespread flooding and power outages which have led to roadway closures, infrastructure impacts, evacuation orders and evacuation alerts. The situation is dynamic and full, accurate situational awareness remains challenging, but current estimates suggest that provincially there are over 524 properties on Evacuation Order, 315 properties on Evacuation Alert and then an additional 7,800 people on Evacuation Order in the Town of Merritt because of the storm.

As a result of the severe weather events this week, EMBC has approved Disaster Financial Assistance (DFA) for flooding in the Vancouver Island & Central Coast, Southwest, and Central regions of the province, including all First Nations communities, electoral areas, and municipalities within these areas.

WEATHER OUTLOOK AND ALERTS

A significant atmospheric river has made landfall across southern coastal regions of British Columbia. Observed rainfall amounts since yesterday have been in the 50-185 mm range across the Coquihalla, upper Coldwater and Tulameen River watersheds. Temperatures have been rising, with temperatures in the 5-7°C range being observed at automated snow weather stations across the region. Snowmelt is being observed at mid-elevations and is adding additional runoff to rivers. Rivers have risen rapidly, with

further rain in the forecast through today, Monday, November 15th (turning to snow at higher elevations).

While the weather picture calmed somewhat over the day, weather warnings continue for much of the southeastern part of the province tonight, including both rainfall and snow warnings. More information available on current warnings available from [Environment Canada](#).

RIVER FORECAST CENTRE (RFC) WATCHES AND WARNINGS

EMBC Central Region

RFC is upgrading or maintaining a Flood Warning for:

- Lower Nicola River
- Similkameen River
- Tulameen River and tributaries
- Coldwater River

EMBC Southwest Region

RFC is upgrading or maintaining a Flood Warning for:

- Coquihalla River
- Sumas River and areas around the US Border

RFC is upgrading to or maintaining a Flood Watch for:

- Sea-to-Sky
- Howe Sound
- North Shore Mountains Fraser Valley including surrounding tributaries
- Fraser Canyon tributaries, including tributaries around Hope
- Chilliwack River

RFC is maintaining a High Streamflow Advisory for:

- Sunshine Coast
- Metro Vancouver

EMBC Vancouver Island & Central Coast Region

RFC is upgrading or maintaining a Flood Warning for:

- Englishman River (NEW)
- Cowichan River
- Koksilah River

HUMAN CONSEQUENCE IMPACTS

EMERGENCY SUPPORT SERVICES (ESS)

Due to the widespread and dynamic nature of the extreme atmospheric river event, exact reporting of ESS activity across all regions and communities remains challenging, and the information below will likely be amended as greater reporting accuracy is achieved.

The total number of active ESS Reception Centres is reported to be approximately 20 (many of these communities are providing mutual aid as host communities)

Communities hosting Reception Centres include:

- Kamloops
- Kelowna

- Abbotsford
- Chilliwack
- Hope
- Agassiz
- Regional District Okanagan Similkameen/Penticton
- Salmon Arm

Additional Information

- The Provincial ESS Call Centre is receiving high call volume and has extended their hours until 18:00h tonight
- Availability of commercial accommodation in Kamloops is low and the city is experiencing up to 5-hour wait times at their Reception Centre to provide supports.
- Kelowna has accommodation capacity for additional evacuees.

FLOOD IMPACTS

INFRASTRUCTURE & TRANSPORTATION

- Highway Closures:
 - Highway 1 (Agassiz – Spences Bridge)
 - Highway 3 (Sunshine Valley)
 - Highway 5 (Hope – Merritt)
 - Highway 7 (Maple Ridge – Hope)
 - Highway 11 (US border – Vye Road, Abbotsford)
- Stranded Motorists Incident – Highway 7 near Agassiz - SWE
 - Two vehicles and a semi-truck went over an embankment due to mudslide.
 - Approximately 80 vehicles were stranded overnight on the roadway.
 - Agassiz Fire Department, Hope SAR and HUSAR Taskforce #1 responded to assist people trapped in their vehicles
 - The Joint Rescue Coordination Centre (JRCC) supported the response with 3 Canadian Armed Forces (CAF) Cormorant helicopters
 - Reports suggest over 270 people were rescued from site and up to 5 patients were transferred to hospital
- Stranded Motorists Incident - Hwy 99 near Lillooet - SWE
 - At least 3 slides were identified in the 30km area south of Lillooet
 - 42 vehicles and 65 people were stranded at the location
 - Ground Search and Rescue teams assisted the response
 - Reports indicate all motorists were rescued
 - Information was limited due to a lack of cell coverage in the area
- Stranded Motorists Incident – Hwy 1 near Haig - SWE
 - Approximately 200 vehicles were stranded on Hwy 1 by landslides in the Haig area
 - Rescue efforts were slowed by the need to de-energize nearby powerlines
 - After de-energization had occurred, an egress path to Hope was cleared
 - As of the evening of Nov. 15, 2021, all motorists are reported to have arrived in Hope
 - Further emergency supports are being planned for the Hope community and travellers stranded there for Nov. 16, 2021
- Train Derailment (2 Cars) - Mile 80 Yale – DGIR Code 1 - SWE
 - Cause unknown, but suspected to be due to rain
 - No dangerous goods; dry materials only
 - No reports of injuries or waterways impacted

- Reports are being investigated of further mud and landslides events impacting District of Kent, Highway 1, and Abbotsford
- There have been multiple additional road closures throughout the day in the SWE, CTL and VIC regions, with impacts continuing in numerous locations across all 3 regions.
- For a complete list of highway and road closures, including ferry disruptions due to flooding, see [DriveBC](#).

UTILITIES/ TELECOMMUNICATIONS

- Fortis BC:
 - Sunshine Coast at Roberts Creek distribution line and intermediate pressure line exposed in creek. Hydro line de-energized and FD on scene.
 - Halfmoon Bay distribution pressure line is exposed
 - A main distribution line at Princeton is impacted with up to 1200 customers possibly affected
 - Distribution line at Merritt is impacted but the full extent cannot be confirmed due to current high-water levels
 - Fraser Valley distribution line service in a farmer's field near Seabird Island is leaking and being isolated
- Telecommunications:
 - Bell cellular voice/data outages in the Fraser Valley and Northern Vancouver

CROSS-MINISTRY AND AGENCY UPDATES

HEALTH

- Due to the sewage and water shutdowns in Merritt, Interior Health is planning the evacuation of the Merritt hospital, as well as several other health facilities in the area, including Long-Term-Care and Assisted Living sites.
- Power outages and road closures are impacting staffing and critical supply lines to health facilities and Long-Term Care and Assisted Living sites, particularly in the Hope area.
- Some vaccine clinics in VCH/PHC have been canceled due to weather conditions and travel issues.
- Planning underway to prepare for the impacts of expected wind and power outages in the Island and south-coast areas overnight.

PROVINCIAL REGIONAL UPDATES

CENTRAL REGION (CTL)

CTL PREOC has activated in response to flooding.

Due to the widespread and dynamic nature of the extreme atmospheric river event, exact reporting of community impacts remains challenging, and the information below will likely be amended as greater reporting accuracy is achieved.

FIRST NATIONS

- Coldwater First Nation
 - Band Council Resolution Declared
 - Evacuation Order Issued: 3 Properties
- Shakan First Nation

- Band Council Resolution Declared
- Evacuation Order Issued: Approximately 70 people
- Evacuation Alert Issued
- Nooaitch First Nation
 - Band Council Resolution Declared
 - Evacuation Order Issued: Approximately 100 people

LOCAL AUTHORITIES

- City of Merritt
 - State of Local Emergency Declared
 - Evacuation Order Issued: Entire Community (Approx. 7800 people)
 - Due to failure of sewage treatment plant (unsanitary conditions)
 - Significant ESS supports being provided in Kamloops & Kelowna
 -
- Columbia Shuswap Regional District
 - State of Local Emergency Declared
- Regional District Okanagan-Similkameen
 - EOC Activated
 - State of Local Emergency Declared
 - Evacuation Order Issued: 24 Properties
- Thompson Nicola Regional District
 - Evacuation Alerts Declared
 - Electoral Area “I” (Blue Sky Country)
 - Electoral Area “M” (Beautiful Nicola Valley – North)
 - Electoral Area “N” (Beautiful Nicola Valley – South)
- Tulameen
 - EOC Activated
- Town of Princeton
 - EOC Activated
 - State of Local Emergency Declared
 - Evacuation Order Issued: Properties along the Tulameen River
 - Evacuation Alert Issued: Properties along the Similkameen & Tulameen Rivers
- Salmon Arm District
 - EOC Activated

ESS Reception Centres:

- Regional District Central Okanagan: Kelowna – Parkinson Activity Centre
- City of Kamloops: McArthur Island Sport and Event Centre
- Regional District Okanagan Similkameen: Penticton - Bus Barn

SOUTHWEST REGION (SWE)

SWE PREOC activated in response to flooding

Due to the widespread and dynamic nature of the extreme atmospheric river event, exact reporting of community impacts remains challenging, and the information below will likely be amended as greater reporting accuracy is achieved.

FIRST NATIONS

- Chawathil First Nation
- Kwikwetlem First Nation
 - Put on flood alert from BC Hydro Dams.
- Leq'á:mel First Nation
- Matsqui First Nation
 - Band Council Resolution Declared
- Peters First Nation
- Skawahlook First Nation

LOCAL AUTHORITIES

- City of Abbotsford
 - State of Local Emergency Declared
 - 3 Evacuation Orders Issued
 - 7 Evacuation Alerts Issued
- Bowen Island
- Burnaby
- City of Chilliwack
- Fraser Valley Regional District
 - State of Local Emergency Declared
 - 4 Evacuation Orders Issued
 - 3 Evacuation Alerts Issued
- Town of Hope
 - Access from all Highways (1,3,5) cut off
 - Significant power outages for much of the day (w/hospital on generator)
 - Many motorists stranded in community
 - Report of restoration of power late day
- District of Kent
 - State of Local Emergency Declared
- City of Langley
- Mission
- New Westminster
- Pemberton
- Pitt Meadows
- Port Coquitlam
- Richmond
- Squamish Lillooet Regional District
- Squamish District
- Sunshine Coast Regional District

ESS Reception Centres:

- Abbotsford: Abbotsford Recreation Centre
- Agassiz: Agassiz Agricultural Hall
- Chilliwack: Chilliwack Secondary School
- Hope: Grace Baptist Church and Hope Secondary School

VANCOUVER ISLAND AND CENTRAL COAST REGION (VIC)

VIC PREOC activated in response to flooding

FIRST NATIONS

- Halalt First Nation:
 - 150 evacuees
 - Band Council Resolution Declared
 - Evacuation Order Issued
- Snuneymuxw First Nation:
 - Band Council Resolution Declared
 - Evacuation Order Issued
 - 25 evacuees (approximate)
- Penelakut First Nation:
 - Evacuation Order Issued
 - 50 evacuees (approximate)
- Cowichan Tribes:
 - Evacuation Order Issued
 - 120 evacuees (approximate)
- Pauquachin First Nation
 - Evacuation Order Issued

LOCAL AUTHORITIES

- Cowichan Valley Regional District:
 - State of Local Emergency Declared (applying to Cowichan Tribes, Halalt First Nation, Penelakut Tribe, Cowichan Valley Regional District, Municipality of North Cowichan and City of Duncan)
 - Evacuation Order Issued (City of Duncan)
 - 2 ESS reception centres open
 - SOLE in place
- Nanaimo Regional District:
 - 3 States of Local Emergency in place
 - Parts of Electoral Area A
 - Parts of Electoral Area G: Pathfinder Resort
 - Parts of Electoral Area G: Cedar Grove Campsite
 - 3 Evacuation Orders Issued
 - Englishman River
 - Nanaimo River
 - Little Qualicum
- Capital Regional District
 - EOC Activated
- District of Sooke
 - EOC Activated
- District of Highlands
 - EOC Activated
- City of Langford
 - EOC Activated
 - Evacuation Alert Issued

- 20+ properties on alert
- Central Saanich
 - EOC activated

ESS Reception Centres:

- Cowichan Valley Regional District (2 Reception Centres)
- Nanaimo ESS taking on a tele-registration support role for Halalt FN
- Oceanside EMO ESS is going to support first 72 hrs in Parksville

Key Internet Links:

Avalanche Canada Weather Forecast [Drying out at last \(avalanche.ca\)](http://avalanche.ca)

Emergency Info BC

<https://www.emergencyinfobc.gov.bc.ca>

BC Hydro Outage Map <https://www.bchydro.com/power-outages/app/outage-map.html>

BC River Forecast Centre

<https://www2.gov.bc.ca/gov/content/environment/air-land-water/water/drought-flooding-dikes-dams/river-forecast-centre>

Drive BC

<https://www.drivebc.ca/mobile/events/index.html>

Information about Disaster Financial Assistance is available on the DFA web site at

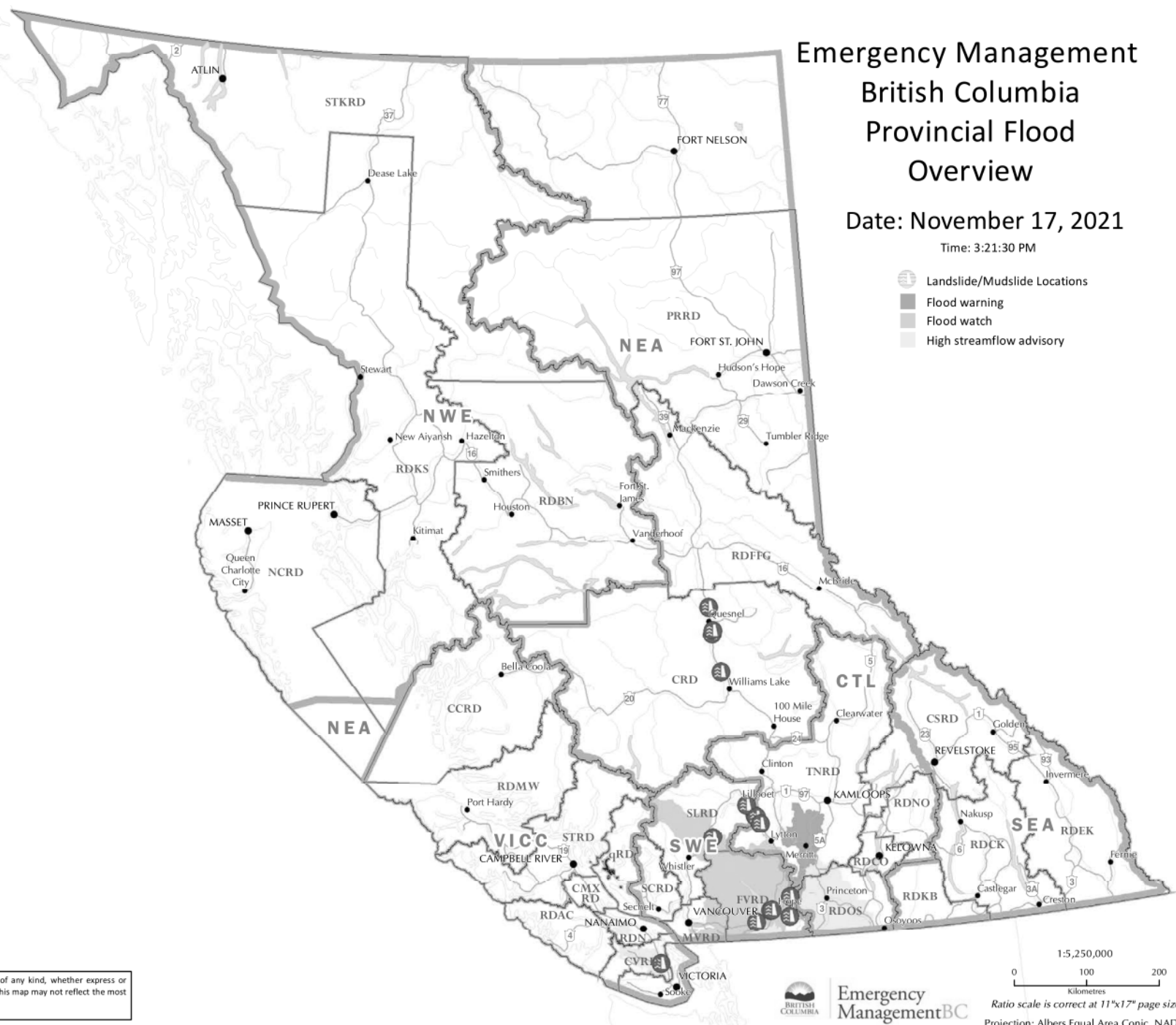
<http://www.gov.bc.ca/disasterfinancialassistance>

Environment Canada [British Columbia - Weather Conditions and Forecast by Locations - Environment Canada](#)

APPROVED BY:

Brendan Ralfs
PECC Director

Note: This document may be distributed within your agency. Any distribution outside your agency requires prior approval from the PECC Director

[illegible]

Central Provincial Regional Emergency Operations Centre (CTL PREOC)**SITUATION REPORT**

Event: Central Region – Atmospheric River

Date/Time Issued: 2021-11-17, 15:30hrs

EMBC Task # CTL: 223874

Operational Period: 2021-11-17, 08:30hrs to 16:30hrs (or until required)

CTL PREOC Level: 2

CTL Primary PREOC Email: s.17

CTL Primary PREOC Phone: s.17

CTL Primary PREOC Fax: 250-371-5246

Overall Regional Situation: Improving

The next Situation Report will be issued: 2021-11-18 at 15:30hrs

Activated EMBC Staff: 12 **Activated TEAMS:** 5 **Activated Other:** 9

**** New information in blue. Information current as of 15:00hrs**

Key Regional Information:**Provincial State of Emergency**

A Provincial State of Emergency was issued on November 17, 2021 at 1315 to mitigate impacts on transportation networks and movement of essential goods and supplies, and to support the provincewide response and recovery from the widespread damage caused by severe flooding and landslides in British Columbia. <https://news.gov.bc.ca/25752>

Disaster Financial Assistance

EMBC has approved Disaster Financial Assistance (DFA) for flooding in the following areas as a result of the severe weather events this week:

Vancouver Island, Southwest and Central areas of the province including all first nation communities, electoral areas and municipalities within the geographic boundaries of these areas.

Initial damage estimates are unknown, as more information becomes available updates will be provided. In addition, the geographic area for this event may be updated as additional information regarding impacts becomes known.

Specifics about this event and general information about DFA can be found on our website at:

<http://www.gov.bc.ca/disasterfinancialassistance>

Event: Central Region Atmospheric River 2021

	Central Region (CTL)
Band Council Resolutions declaring a SOLE	4 (+1)
States of Local Emergency (SOLE)	7 (+2)
Evacuation Orders	13 (-1)
Evacuation Alerts	6 (-3)

EMERGENCY SUPPORT SERVICES SUMMARY

	Central Region (CTL)
Evacuees Registered (to date)	2038 ¹
Reception Centers Open	5
GL Facilities Open	0
Commercial Lodging: Evacuees / Rooms	1307 ^{1,2} /574 ^{1,2}
Billets: Evacuees / Billet Hosts	300 ^{1,2} /156 ^{1,2}
Evacuees in Group Lodging	0 ^{1,2}

Numbers include those evacuated for Wildfire and Atmospheric River Events

¹Values are approximate

²Retrieved from ERA

FIRST NATIONS

Coldwater Indian Band

Task: 223882 Incident: 210142

- IR #2 is isolated and without water and power
- **Alerts: 0**
- **Orders: 0**
- **State of Local Emergency: 1**
 - BCR issued to declare a SOLE on November 15, 2021 and is effective until rescinded

Cook's Ferry Indian Band

Task: 223882 Incident: 210120

- **Alerts: 1**
 - Issued a BCR for an evacuation alert on November 15, 2021 at 12:25 for IRs #2, 3, 4A, 4B, 4C, 5, 5A, 6, 8, 8A, 9, 10, 11, 11A, 16, 17, 18, 19 Firstly, 19 Secondly, 20, 21 & 22
- **Orders: 2**
 - Issued a BCR for an evacuation order on November 15, 2021 at 12:25 for IR#1
 - Issued a BCR for an evacuation order on November 15, 2021 at 12:25 for IR#7
- **State of Local Emergency: 1**
 - BCR issued to declare a SOLE on November 15, 2021 and is effective until rescinded

Lower Similkameen Indian Band

Task: 223882 Incident: 210170

- Chopaka bridges have been compromised and are closed in both directions
- **Alerts: 1**
 - Issued a BCR for an evacuation alert on November 15, 2021 at 14:00 for Chopaka IR #7/8; Similkameen IR #2, Alexis IR #9, Ashnola IR #10.
- **Orders: 0**
- **State of Local Emergency: 1**
 - BCR issued to declare a SOLE on November 16, 2021 at 14:00 and is effective until November 19, 2021 at 14:00

Lytton First Nation

Task: 223882 Incident: 210134

- Community is without power
- Water system currently not operational
- **Alerts: 0**
- **Orders: 0**
- **State of Local Emergency: 0**

Nicomen Indian Band

Task: 223882 Incident: 210178

- Community is isolated
- Bridge has been washed out
- **Alerts: 0**
- **Orders: 0**
- **State of Local Emergency: 0**
-

Nooaitch Indian Band

Task: 223882 Incident: 210132

- Community is sheltering in place
- Community is isolated and without power
- A reconnaissance flight occurred November 17, 2021 with members from Nooaitch Indian Band and staff from FLNRORD
- Two bridges have been washed out
- **Alerts: 0**
- **Orders: 1**
 - Issued a BCR for an evacuation order on November 15, 2021 for IR# 10
- **State of Local Emergency: 0**

Okanagan Indian Band

Task: 223882 Incident: 210175

- **Alerts: 1**
 - Issued on November 16, 2021 at 14:00 for Residences located North of Westside road from 12020 Westside Road to 11820 Westside Road including residents on Tatalux and North Tatalux Roads
- **Orders: 0**
- **State of Local Emergency: 0**

Siska First Nation

Task: 223882 Incident: 210184

- Alerts: 0
- Orders: 0
- State of Local Emergency: 1
 - BCR issued to declare a SOLE on November 16, 2021 and is effective until rescinded

Shackan First Nation

Task: 223882 Incident: 210133

- Community is without power as of November 16, 2021
- Road closed from Porcupine Ridge Rd (9km east Spences Bridge) to Petit Creek Rd (17 km west of Merritt)
- Alerts: 0
- Orders: 1
 - Issued a BCR for an evacuation order on November 15, 2021 at 08:00 for IR# 11
- State of Local Emergency: 0

Skuppah Indian Band

Task: 223882 Incident: 210179

- George Rd washout has caused there to be no access to the water treatment plant
- IR #4 water intake has been washed out
- Currently relying on the remaining water supply in their reservoir
- Alerts: 0
- Orders: 0
- State of Local Emergency: 0

LOCAL AUTHORITIES

Columbia Shuswap Regional District

Task: 223928 Incident: 210159

- Activated the EOC to a level one on November 15, 2021 in response to flooding and sand bag requests
- Alerts: 0
- Orders: 0
- State of Local Emergency: 0

Lillooet, District of

Task: 223922 Incident: 210160

- Activated November 15, 2021 to provided ESS to people stranded due to road closures
- Lillooet Friendship Centre Society providing group lodging and assisting with food when necessary
- Alerts: 0
- Orders: 0
- State of Local Emergency: 0

Merritt, City of

Task: 223861 Incident: 210105

- Water levels have receded significantly

- Barricade systems have been formalized and currently bridges are not being crossed for any reason until structural assessments are completed
- The wastewater treatment plant is down, with no estimated date for bringing it online
- The water system is contaminated as a result of a well malfunction and the City has turned the water off
- Middlesboro Bridge has collapsed
- **Alerts: 0**
- **Orders: 1**
 - Issued on November 15, 2021 at 10:05 for the entirety of the City of Merritt and replaces the initial evacuation order
- **State of Local Emergency: 1**
 - Issued on November 15, 2021 and expires at midnight on November 22, 2021

Princeton, Town of

Task: 223857 Incident: 210104

- The sewer system is up and running with minor silt issues
- Boil water advisory in place; downtown core is under “do not consume” order
- Bridge and dike assessments are expected to be done soon
- No restaurants are open due to no gas and no potable water
- **Alerts: 0**
 - Rescinded on November 16, 2021 at 15:30 for Alert issued on November 15, 2021 at 11:30 for low lying properties within the Town boundaries along the Similkameen River
 - Rescinded on November 16, 2021 at 15:30 for Alert issued on November 15, 2021 at 02:30 for low lying properties within the Town boundaries along the Tulameen River
 - Rescinded on November 16, 2021 at 15:30 for Alert issued on November 14, 2021 at 21:30 for low lying properties within the Town boundaries along the Tulameen River
- **Orders: 3**
 - Issued on November 15, 2021 at 00:15 for low lying properties within the Town boundaries along the Tulameen River
 - Issued on November 14, 2021 at 23:30 for low lying properties within the Town boundaries along the Tulameen River
 - Issued on November 14, 2021 at 22:30 for low lying properties within the Town boundaries along the Tulameen River
- **State of Local Emergency: 1**
 - Issued on November 14, 2021 and expires at midnight on November 21, 2021

Regional District of Okanagan Similkameen (RDOS)

RDOS - Electoral Area B

Task: 223851 Incident:

- **Alerts: 1**
 - Issued on November 15, 2021 at 12:30 for Electoral Area B for low-lying properties along the Similkameen River
- **Orders: 1**
 - Issued on November 15, 2021 at 16:30 for 4 properties on Chopaka Road in Electoral Area B
- **State of Local Emergency: 1**
 - Issued on November 15, 2021 for EA B and expires at midnight on November 22, 2021

RDOS - Electoral Area G

Task: 223851 Incident: 210148

- **Alerts: 1**
 - Issued on November 15, 2021 at 12:30 for Electoral Area G for low-lying properties along the Similkameen River
- **Orders: 1**
 - Issued on November 15, 2021 at 15:30 for Electoral Area G properties in Schedule 1
- **State of Local Emergency: 1**
 - Issued on November 15, 2021 for EA G and expires at midnight on November 22, 2021

RDOS - Electoral Area H

Task: 223851 Incident: 210101

- Flooding Tulameen River and some minor landslides. Roads closed in and out of Tulameen and Princeton.
- **Alerts: 1**
 - Issued on November 15, 2021 at 12:30 for Electoral Area H for low-lying properties along the Similkameen River
- **Orders: 2**
 - Issued on November 15, 2021 at 16:45 for properties in the community of Coalmont
 - Issued on November 14, 2021 at 21:45 for Electoral Area H properties in Schedule 1
- **State of Local Emergency: 1**
 - Issued on November 14, 2021 for EA H and expires at midnight on November 21, 2021

RDOS - Keremeos

Task: 223851 Incident: 210161

- **Alerts: 0**
 - Rescinded on November 16, 2021 at 16:30 for Alert issued on November 15, 2021 at 12:30 for low-lying properties along the Similkameen River within the Village of Keremeos
- **Orders: 0**
- **State of Local Emergency: 0**

Thompson Nicola Regional District (TNRD)

TNRD – Nicola

- List obtained from TNRD to co-ordinate efforts to do wellness checks and rescues for locations along Hwy 8 Merritt Spences Bridge
- List is divided among 3 local RCMP detachments: Merritt, Lytton, Hope. Responses requested from RCMP upon completion.
- TNRD co-ordinating transport of rescues from Merritt to Kelowna for ESS.

Task: 223909 Incident: 210151

- **Alerts: 0**
 - Rescinded on November 17, 2021 at 12:00 for Alert issued on November 15, 2021 at 10:00 for Electoral Area I, M, and N
- **Orders: 1**
 - Issued on November 16, 2021 at 16:00 for 37 addressed properties in Electoral Area I
- **State of Local Emergency: 1**
 - Issued on November 16, 2021 for EA I and expires at midnight on November 22, 2021

TNRD - Brookemere

Task: 223909 Incident: 210168

- **Alerts: 0**
- **Orders: 0**
 - Rescinded to an All Clear on November 17, 2021 at 12:00 for Order issued on November 15, 2021 at 16:00 for 51 addressed properties in the community of Brookemere
 - Rescinded to an All Clear on November 17, 2021 at 12:00 for Order issued on November 15, 2021 at 15:30 for 2 addressed properties in Electoral Area N
- **State of Local Emergency: 1**
 - Issued on November 15, 2021 for EA N and expires at midnight on November 22, 2021

RIVER FORECAST CENTRE

LAST UPDATED: 15:30 PM November 16, 2021

The River Forecast Centre is **maintaining** Flood Warnings for:

- **Lower Nicola River**
- **Coldwater River**

The River Forecast Centre is **maintaining** High Streamflow Advisories for:

- **Similkameen River**
- **Tulameen River and tributaries**

WEATHER FORECAST FOR NOVEMBER 17, 2021

Weather forecasts are taken from Environment Canada: <https://weather.gc.ca>

Merritt

Today: Mainly cloudy. High plus 2. UV index 1 or low.

Tonight: Mainly cloudy. Low minus 1.

Tomorrow: Mainly cloudy with 60 percent chance of flurries or rain showers. High plus 3. UV index 1 or low.

Princeton

Today: Mainly cloudy. High minus 1. UV index 1 or low.

Tonight: Mainly cloudy. Wind up to 15 km/h. Low minus 5. Wind chill minus 6 this evening.

Tomorrow: Mainly cloudy. Periods of snow beginning late in the morning. Amount 2 cm. High zero.

PEOPLE IMPACTED

Merritt, City of

- **# of Homes on Alert:** 0
- **# of Homes/Units Evacuated:** approximately 7800 people notified, approximately 4700 confirmed to have evacuated

Princeton, Town of

- **# of Homes on Alert:** TBD
- **# of Homes/Units Evacuated:** approximately 300 homes

Shackan Indian Band

- **# of Homes on Alert:** TBD
- **# of Homes/Units Evacuated:** approximately 50 people

Reception Centres and Group Lodging (CTL)

Central Okanagan Regional District – RC

- Relocating to Willow Park Church effective November 17, 2021
- **Location:** Willow Park Church, 438 Hwy 33, Kelowna, BC
- **Hours:** 10:00 to 22:00

Columbia Shuswap Regional District - RC

- **Location:** Prestige Harbourfront Resort, 251 Harbourfront Drive, Salmon Arm, BC
- **Hours:** 8:00 to 18:00 (tentative)

Lillooet, District of – RC

- **Location:** Lillooet Friendship Centre, Community Cares building, 76 5th Ave, Lillooet, BC
- **Hours:** TBD

Kamloops, City of – RC

- Kamloops has no further accommodations available
- **Location:** McArthur Island Sport & Event Centre, 1655 Island Parkway, Kamloops, BC
- **Hours:** 10:00 to 20:00 (tentative)

Penticton, City of – RC

- **Location:** Penticton Seniors' Drop-in Centre, 2965 South Main Street, Penticton, BC
- **Hours:** 10:00 to 17:00 (tentative)

LIVESTOCK IMPACTED

Ministry of Agriculture, Food and Fisheries

As of 9:45am there are currently **8 premises** with livestock under Order and **82 premises** under Alert. The number of livestock under Order/Alert is beef cattle (229/39,478), dairy cattle (200/11,540), horses (15/801), sheep (4/202), swine (10/250), goats (4/92) poultry (20/2,230), other (9/161)

Important note: The numbers are based on the Premises ID registration which is still a voluntary program in B.C. and registration rates that are still relatively low compared to provinces with mandatory Premises ID programs. Emergency planning and response based on premises information must always be done with the understanding that the data is neither comprehensive nor authoritative. The true numbers may be higher.

TRANSPORTATION IMPACTED

Statement from Canada Border Services Agency (CBSA) media team:

"The Canada Border Services Agency (CBSA) can confirm that given the current situation in BC, travellers who must transit through the United States to get to their residence in Canada are exempt from the COVID-19 pre-arrival test, the test in Canada, and quarantine requirements.

Pre-existing exemptions within the Orders in Council (OIC) can be applied to travellers in this situation:

Exemption - Pre-Arrival Test – By Land

S1.T2.I20: A person who enters Canada to return to their habitual place of residence in Canada after carrying out everyday functions that, due to geographical constraints, necessarily involve entering the United States

Exemption – Quarantine

S2.T1.I14: A person who enters Canada to return to their habitual place of residence in Canada after carrying out everyday functions that, due to geographical constraints, necessarily involve entering the United States

Exemption – Test in Canada

S2.T2.I14: A person who enters Canada to return to their habitual place of residence in Canada after carrying out everyday functions that, due to geographical constraints, necessarily involve entering the United States

There are many factors that come into play when a CBSA border services officer is determining which instructions are provided to a traveller with regards to their public health obligations. CBSA officers use all of the information available to them when a traveller is seeking entry into Canada to determine which set of instructions apply to the traveller".

Ministry of Transportation and Infrastructure Road Closures/Advisories

Check DriveBC for up-to-date information:

<https://www.drivebc.ca/mobile/events/index.html>

Chopaka Road, in both directions. **Bridge closed** at Chopaka Road Bridge #1. Estimated time of opening not available. Chopaka Road Bridge #1 is closed until further notice due to flooding. Next update time Tues Nov 23 at 3:00 PM PST. Last updated Wed Nov 17 at 8:04 AM PST.

Coalmont Rd, in both directions. Bridge wash out between Brookmere Rd and Manning Station Rd (50 km north of Princeton). **Road closed**. Detour not available. Roberts Bridge washed out 20 km north of Tulameen. Next update time Tues Nov 23 at 10:00 AM PST. Last updated Wed Nov 17 at 0748 AM PST.

Coalmont Rd, in both directions. Flooding between Ford St and Collins Gulch Rd (23 km north of Princeton). **Road closed**. Estimated time of opening not available. Next update time Tues Nov 23 at 4:00 PM PST. Last updated Wed Nov 17 at 0748 AM PST.

Highway 1, in both directions. Flooding between Flood Hope Rd and Junction Hwy 8 for 144.3 km (Hope to Spences Bridge). Rock slide. **Road closed**. Estimated time of opening not available. Assessment in progress. Next update time Wed Nov 17 at 3:00 PM PST. Last updated Tue Nov 16 at 10:46 AM PST.

Highway 3, Highway 3, in both directions. Flooding between Taylor Mill Rd and Old Hedley Rd for 27.9 km (2 km east of Princeton to 6 km west of Hedley). Road closed. Assessment in progress. Estimated time of opening not available. Next update time Tue Nov 23 at 9:00 AM PST. Last updated Wed Nov 17 at 7:47 AM PST.

Highway 5, in both directions. Mudslide at Exit 202 (11 km south of Great Bear Snowshed). Road closed. Assessment in progress. Estimated time of opening not available. Detour not available. Road closed between Hope and Merritt. Next update time Thu Nov 18 at 12:00 PM PST. Last updated Wed Nov 17 at 12:45 PM PST

Highway 8, in both directions. Flooding between Porcupine Ridge Rd and Petit Creek Rd for 33.5 km (9 km east of Spences Bridge to 17 km west of Merritt). **Road closed**. Assessment in progress. Estimated time of opening not available. Next update time Thu Nov 18 at 12:00 PM PST. Last updated Wed Nov 17 at 12:45 PM PST.

Highway 99, Highway 99, in both directions. Mudslide between Lil'wat Pl and Seton Lake Rd for 81.9 km (9 km north of Pemberton to Lillooet). Road closed. Estimated time of opening not available. Assessment in progress. Next update time Wed Nov 17 at 6:00 PM PST. Last updated Tue Nov 16 at 2:46 PM PST.

Old Hedley Rd, in both directions. Flooding at Old Hedley Rd near Princeton. Road closed. Estimated time of opening not available. Please avoid the area until further notice. Next update time Mon Nov 22 at 9:00 AM PST. Last updated Wed Nov 17 at 7:47 AM PST.

Rice Road Bridge. Bridge wash out at Rice Road 19 km north of Princeton. Road closed. Rice bridge at Granite Creek near Coalmont has been washed out. Avoid the area. Last updated Mon Nov 15 at 1:31 PM PST.

Railway Traffic

Canadian Pacific Railway

- Damage assessments are being made and starting to work on recovery
- CP's operations between Spences Bridge and Falls Creek, BC, remain suspended following heavy rains that have resulted in multiple track outages.
- CP has deployed crews and equipment to the region, and CP engineering teams are working to repair the damaged rail corridor as quickly as possible where safe to do so.
- There is no time estimate for when service will resume.
- CP is working closely with authorities, including the Ministry of Transportation and Infrastructure, in our response to the situation. The safety of our employees and the public remains our priority.

Canadian National Railway

- Understood but unconfirmed by CN Rail that rail traffic through the Fraser Canyon has been suspended due to multiple events. No estimated time of re-opening.

UTILITIES IMPACTED

BC Hydro

- In the late afternoon and early evening of Monday, November 15, the wind caused power outages in the Interior and Okanagan/Kootenay regions. During the evening peak, between 7 and 8 p.m., about 82,000 customers were without power with the hardest hit areas being Williams Lake, Kamloops, 100 Mile House, West Kelowna and Vernon.
- The timing of the storm, and access issues from heavy rain and flooding, led to some customers being without power overnight. BC Hydro crews and contractor crews worked throughout the night

to restore power to the vast majority of impacted customers. Most customers left without power by Monday's windstorm will have their power restored today – with exceptions where access roads are still closed, where crews cannot safely make repairs, or very remote locations that pose access challenges.

- **0900 Nov. 16:** Crews are continuing to find access challenging in the region, due to flooding and hazards. Has crews coming in today from Prince George to help crews in their restoration efforts and are working with local officials in Merritt to assess damage in the area and plan restoration when it is safe to do so.

Fortis BC

Gas Outage – Princeton

- Due to flood conditions, it has been challenging to assess the damage but FortisBC has a restoration plan in place that they are ready to execute starting Wednesday morning.
- Crews are working to repair storm damage to gas infrastructure in the area. As a safety precaution, crews are shutting off the gas service to approximately 1,275 customers in Princeton in the south side of the Tulameen River and the downtown core.
- FortisBC's first priority is to make the situation safe and determine the best way to repair the gas line with the least impact to our customers. Due to flood conditions, it is challenging to assess the damage.
- After this, crews will visit each home or business to turn gas back on at the meter and relight all affected appliances. If no one is home, FortisBC service crews will leave door tags that provide contact information for relights. If you receive a tag contact the emergency number 1-877-711-8877 to arrange for FortisBC to restore your service. It is important that you do not attempt to relight any appliances yourself.
- Currently, FortisBC does not have a timeline for restoration and will provide updates as soon as they are able. Customers should be prepared for an outage to last for a couple of days due to the number of relights required. We greatly appreciate the patience of local residents as we work our hardest to restore your service as quickly as possible.

Electricity Outage – Kelowna

- Crews are working safely and as quickly as possible to restore power to approximately 100 customers in Kelowna, following an outage on our electricity system caused by heavy rain storms.

Shaw

- **0652 Nov. 17:** Technicians are on site working to restore service as quickly as possible. No ETA at this time but will continue to monitor the situation and provide updates when available.
- Shaw has outages on Internet, Business Internet, Phone, Business Phone, Digital TV, VOD, Gateway, BlueCurve TV, WiFi Access Points.
- **0842 Nov. 16:** Due to extreme weather and driving conditions in British Columbia, some customers are temporarily without service. Once weather conditions in the affected areas subside, local technicians will work to restore services as quickly as possible. Please note there will be delays in technician visits and equipment shipping.

Telus

- Active outage in Spences Bridge area due to cable damage from landslide. Due to safety reasons, service technicians are standing down, and will continue to work with local authorities to ensure safe access to the site as quickly as possible. Estimated time of repair is early morning Nov. 18.

- BC Hydro crews continue to restore commercial power and TELUS team members are also working hard to maintain TELUS network infrastructures. Impacts in the Thompson/Shuswap and Okanagan/Kootney regions.

USEFUL LINKS

Emergency Info BC

<https://www.emergencyinfobc.gov.bc.ca>

BC River Forecast Centre

<https://www2.gov.bc.ca/gov/content/environment/air-land-water/water/drought-flooding-dikes-dams/river-forecast-centre>

Drive BC

<https://www.drivebc.ca/mobile/events/index.html>

FortisBC outage map

<https://outages.fortisbc.com/Outages>

BC Hydro outage map

<https://www.bchydro.com/power-outages/app/outage-map.html>

Disaster Financial Assistance (DFA)

<http://www.gov.bc.ca/disasterfinancialassistance>

PUBLIC INFORMATION AND MEDIA ISSUES

Atmospheric River Coordination Call:

- Thursday, November 18, 2021 at 10:00
- Thursday, November 18, 2021 at 15:00

ESS Coordination Call:

- Thursday, November 18, 2021 at 13:15

Event: Central Region Wildfire 2021

	Central Region (CTL)
Band Council Resolutions	2
States of Local Emergency	1
Evacuation Orders	4
Evacuation Alerts	1

FIRST NATIONS

Lytton First Nation

Lytton Creek Complex Wildfire K71086

Task: 220360 Incident: 210339

- Alerts: 0
- Orders: 0
- State of Local Emergency: 0
 - BCR declaring a SOLE issued June 30, 2021 until rescinded

Skuppah Indian Band

George Rd Wildfire K70804

Task: 220360 Incident: 210153

- Alerts: 0
- Orders: 0
- State of Local Emergency: 1
 - BCR to issue a SOLE declared July 25, 2021 until cancelled
 - Intends to keep the BCR for a SOLE in place until services have stabilized in the area

LOCAL AUTHORITIES

Village of Lytton

Lytton Complex Fire (K71086)

Task: 221501 Incident: 210332

- Alerts: 1
 - Order partially downgraded to an alert on August 20, 2021 at 12:00 for Kumcheen Secondary School, Pines Motel, Ponderosa Heights, Loring Way and Kent Road
- Orders: 2
 - Amended August 20, 2021 at 12:00 for alert issued August 14, 2021 at 19:00; Lytton Junction Esso Station, Kent Rd still on Order
 - Issued June 30, 2021 for 217 properties in the Village of Lytton
- State of Local Emergency: 1
 - Issued on June 30, 2021 for the entire Village of Lytton: extended effective November 8, 2021 and expires November 15, 2021

Event: Central Region Freshet 2020

	Central Region (CTL)
States of Local Emergency	1
Evacuation Orders	1
Evacuation Alerts	1

(CSRD) Columbia Shuswap Regional District (CTL) 2020

Incident: 200223 - Lee Creek Landslide

- CSRD EOC advises the residents currently under order have chosen to return to their property.
- **Alerts: 1**
 - Issued on June 22, 2020 for the following areas: Lots #89 to #95, Gateway Lakeview Resort, #2633 Squilax-Anglemont Road, Lee Creek, BC
- **Orders: 1**
 - Issued June 22, 2020, Lots #96 to #100, Gateway Lakeview Resort - 2633 Squilax-Anglemont Road, Lee Creek, BC
- **State of Local Emergency: 1**
 - Issued on June 22, 2020 for the 2400 through 2600 blocks of Squilax-Anglemont Road, Lee Creek in Electoral Area "F": extended effective November 16, 2021 and expires November 23, 2021

APPROVED BY:

Original signed by

Mike Knauff

PREOC Director

Primary CTL PREOC Email: s.17

Primary CTL PREOC Phone: s.17

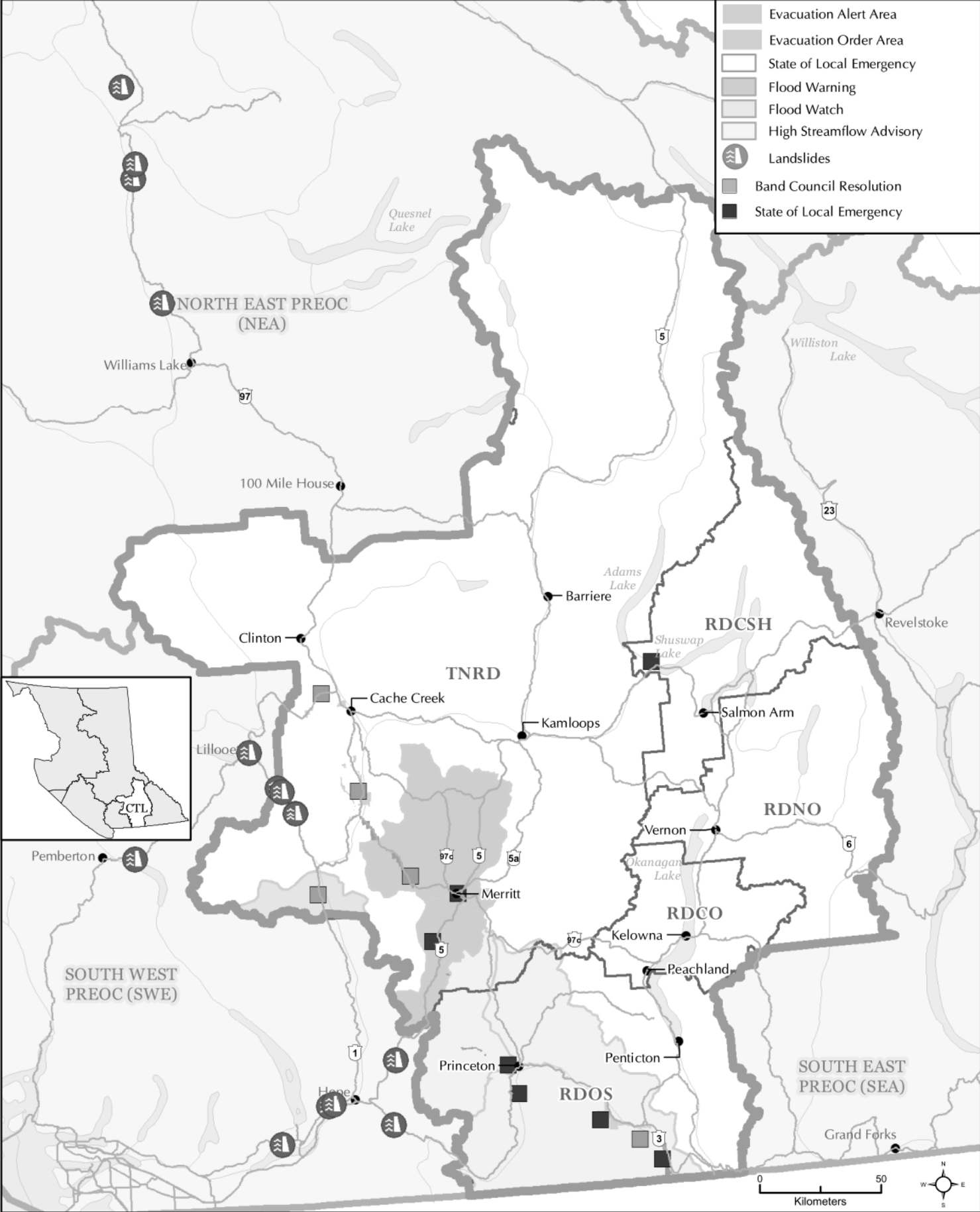
Primary CTL PREOC Fax: (250) 371-5246

Emergency Management BC respectfully acknowledges that it carries out its operations on the traditional territories of Indigenous nations throughout British Columbia, we are grateful for the opportunity to live, work and learn on this land.

Note: This document may be distributed within your agency. Any distribution outside your agency requires prior approval from the CTL PREOC Director.

Central (CTL) Provincial Regional Operational Centre (PREOC) Atmospheric River Flooding Event

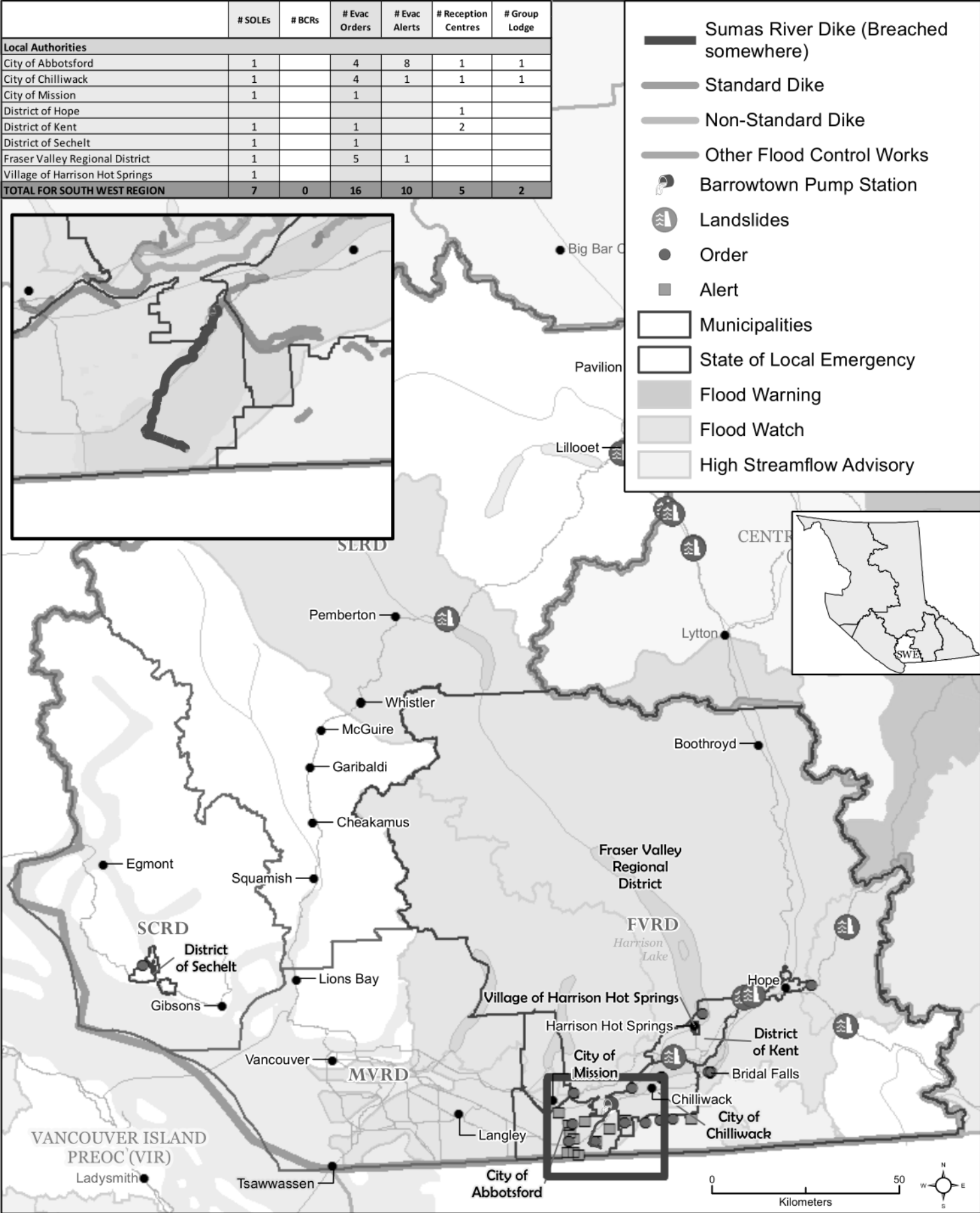
2021-11-17



UPDATED 2021-11-17 Time: 16:45 https://spatialfiles.bcgov/work/lmb/PEP/response/CTL/task_223874_atmospheric_river/largis/projects/task223874_AtmosphericRiver_SitRep_Map_CTL_20211117.mxd

South West (SWE) Provincial Regional Operational Centre (PREOC) Atmospheric River Events

2021-11-17



UPDATED 2021-11-17 Time: 16:49

File: W:\lmb\PEP\response\SWE\task223862_ISC_AtmosphericRiver\arcgisprojects\task223862_sitmap_8x11_20211117.mxd

South West Provincial Regional Operations Centre (SWE PREOC)

SITUATION REPORT #4

Event: Atmospheric River

Date/Time Issued: 2021-11-17; 1630hrs

Task #: 223862

Operational Period: 2021-11-17

Primary PREOC Emails: 17

Primary PREOC Phone: 17

Primary PREOC Fax: 604-586-4083

Overall Regional Situation: Static

Activated EMBC Staff: 13 Activated TEAMS: 4 Agency: 6 Other: 3

The next Situation Report will be issued: 2021-11-18 at 1630hrs

** New information

KEY PROVINCIAL INFORMATION

- The Southwest PREOC is activated to support communities affected by flooding and landslides caused by the Atmospheric River
- On 2021NOV17 the BC government declared a provincial state of emergency to mitigate impacts on transportation networks and movement of essential goods and supplies, and to support the provincewide response and recovery from the widespread damage caused by severe flooding and landslides in British Columbia
- Search & Rescue (SAR) - Task Force 1 has been deployed to assist with the rescue of stranded evacuees of the Sumas Prairie region of Abbotsford
- PREOC ESS Branch is working on staffing and providing support to the Reception and Group Lodging Centres in the Southwest Region
- Major flooding in the Vancouver Island, Southwest and Central areas of the province from 2021NOV14 onward have caused property and content damages. As a result of the damages sustained from this event, provincial Disaster Financial Assistance (DFA) has been authorized for qualifying claimants, such as home owners, residential tenants, small business owners, farmers, charitable organizations and local government bodies, who were unable to obtain insurance to cover these disaster-related losses. See attachment for more information
- The Southwest PREOC is assisting the District of Hope in accessing critical supplies. Hope estimates they are supporting 1100 evacuees for meals and lodging

Environment Canada

- Rain/Wind and Snowfall Warnings
 - All rain, wind, and snowfall warnings for the SWE areas have ended

River Forecast Centre

- As of 7:45 am November 16th, the River Forecast Centre is maintaining the following advisories:
 - Sumas River and areas around the US Border – Flood Warning (MAINTAINED)
 - Fraser Valley including surrounding tributaries – Flood Watch (MAINTAINED)
 - Fraser Canyon tributaries, including tributaries around Hope – Flood Watch (MAINTAINED)
 - Coquihalla River – High Streamflow Advisory (DOWNGRADED)
 - Chilliwack River – High Streamflow Advisory (DOWNGRADED)
- The River Forecast Centre is ending a Flood Watches and High Streamflow Advisories for:
 - Sea-to-Sky – ENDED
 - Howe Sound – ENDED
 - North Shore Mountains – ENDED
 - Sunshine Coast – ENDED

- Metro Vancouver - ENDED

The atmospheric river that impacted southern British Columbia over the weekend and Monday has now moved out of the region. Throughout the region river levels have reached their peak levels and have receded overnight Monday and early on Tuesday. Flows and water levels remain high in lake and reservoir-fed watersheds along the Fraser Valley, including the Allouette River and Harrison River. Low-lying terrain around the Sumas River drainage are also expected to have persistent high-water. Generally dry conditions are expected over the next few days. River levels are expected to continue to recede on Tuesday and through the week

Fraser River Debris Trap Update

ADVISORY

An increase in logs and large woody debris may be experienced on the Lower Fraser River, downstream of Agassiz through Saturday 2021NOV20

Recreational boaters, marine traffic and infrastructure operators should be aware that more logs than normal may be floating downstream due to decreased performance of the Fraser River Debris Trap. Based on new aerial images today, 2021NOV17, high debris volumes have misaligned the booms that direct debris into the Trap. Contractors are inspecting and attempting to realign the booms today, but repairs are expected to take longer

Normally, the Fraser River Debris Trap diverts up to 70% of the woody debris coming downstream near Agassiz before it flows into the lower reaches of the Fraser. Although there is always some volume of logs and floating debris in the River, an increase in the number of floating logs getting past the Debris Trap is anticipated

- The next Coordination Call will be 2021NOV18 @ 1100hrs
- **Total Active RCs: 5 (1 virtual)**
- **Total Group Lodging Facilities: 2**
- **Total Active Alerts: 10**
- **Total Orders: 16**
- **Total States of Local Emergency: 7**
- **Total Band Council Resolutions: 0**
- Note: 1 SOLEs, 1 Order applies to Sechelt 2019 Seawatch Sinkhole

WEATHER FORECAST FOR – 2021NOV17

Abbotsford

Thursday AM	Cloudy with 40 percent chance of showers in the morning and early in the afternoon. Periods of rain beginning in the afternoon. High 6. UV index 1 or low
Thursday PM	Periods of rain. Low plus 2
Friday AM	Sunny. High 7
Friday PM	Cloudy with 60 percent chance of showers. Low plus 2

Pemberton

Thursday AM	Mainly cloudy. 30 percent chance of flurries in the morning and afternoon. Wind up to 15 km/h. High plus 1. Wind chill minus 6 in the morning. UV index 1 or low
Thursday PM	Cloudy periods. Low minus 5
Friday AM	Sunny. High plus 3
Friday PM	Cloudy with 30 percent chance of flurries. Low minus 3

FIRST NATIONS

Chawathil First Nation:

- **Incident:** Flooding
- EOC activated for flooding. 1 home is flooding and material is sliding off of bluffs around the community

Kwikwetlem First Nation:

- **Incident:** Flood Alert
- Advised that they have rescinded their Flood Alert as levels have dropped down safely enough to rescind
- Put on flood alert 2021NOV15 from BC Hydro Dams
- EOC activated 2021NOV15

Leq'á:mel First Nation:

- **Incident:** Flooding
- Virtual EOC activated 2021NOV15 due to flooding and 1,000 sandbags requested

Lower Stl'atl'imx (LSTC):

- **Incident:** Heavy rain caused multiple landslides closing roads and affecting power to Douglas, Samahquam, and Skatin
- Approximately 60 households are without power in Samahquam and Skatin
- LSTC has spoken to FLNRO, BC Hydro, and Lizzie Bay/IRM to coordinate efforts to restore power and access. FLNRO and BC Hydro will have assessment crews out first thing 2021NOV16 to begin the repair/reconnection of power lines and routes
- In-SHUCK-ch FSR - Road access to north to Pemberton has not been established for all communities

Lytton First Nation/Camp Hope

- **Incident:** Activated in support of evacuees located at Camp Hope. Additional accommodation may be available at Camp Hope

Matsqui First Nation:

- **Incident:** Localized flooding on IR 2 and IR 4
- Requested sandbags and sand due to localized flooding on IR 2 and IR 4

Musqueam First Nation:

- **Incident:** Flooding
- EOC activated 2021NOV17 due to flooding

Peters First Nation:

- **Incident:** Flooding
- EOC activated 2021NOV14 for flooding

Seabird Island

- **Incident:** Flooding
- EOC activated 2021NOV15 for flooding
- Group lodging was set up for stranded motorists. Breakfast and lunch provided for 8 truck drivers
 - Transported the 8 truck drivers that stayed at Seabird to Agassiz to the Agricultural Hall EOC/ESS
- Kamp Road off of Seabird Island Road released flood waters into Maria Slough causing major impact
- Currently Seabird Island has endured flooding of several homes and is still in high water advisory. Crews are assessing damage

- Due to access egress concerns in regard to surrounding highways, it is unknown when fuel will be delivered to the Seabird Island Gas station. Currently there is 12,000 liters of fuel. Public Works/Operations are fueled up, however it has been forecasted that Seabird and surrounding areas will be out of fuel by Thursday
- The emergency generator for the community water system is working. Unable to have a secondary unit delivered due to access on local highways
- TELUS fiber connection from Hope is not functional, temporarily lost communication
- Working to mitigate and dry flooded basements within the community, water diversion and sand bagging and to ensure that the community has enough food and supplies in anticipation of food shortages

Shxw̓ha:y Village First Nation

- **Incident:** Flooding
- EOC is activated today 2021NOV17 in support of the flooding and landslide response in the region

Shsw'ow'hamel First Nation

- **Incident:** Flooding
- EOC activated 2021NOV15 for flooding

Skawahlook First Nation:

- **Incident:** Flooding
- EOC activated 2021NOV15 for flooding

Soowahlie First Nation:

- **Incident:** Flooding
- EOC activated 2021NOV15 for flooding
- Currently no power or water due to flooding activity since 2021NOV14

Spuzzum First Nation:

- **Incident:** Flooding
- EOC activated 2021NOV16 for flooding
- Flooding is impacting drinking water in community

Squamish First Nation:

- **Incident:** Flooding
- EOC activated 2021NOV15 for flooding

Sts'ailes First Nation:

- **Incident:** Flooding
- Currently 2 flooded houses and 1 mobile home with water underneath. Community is currently out of sandbags

Sumas First Nation

- **Incident:** Flooding
- EOC activated 2021NOV16 for flooding

LOCAL AUTHORITIES

Abbotsford:

- **Incident:** Heavy rainfall has resulted in several localized mudslides and flooding
- **Alerts: 8**
 - Issued 2021NOV15 for Sumas Prairie: The Southern Rail Line to the West, Whatcom Road to the East, Highway 1 to the North, United States Border to the South (1700 Homes)
 - Issued 2021NOV14 for Matsqui Village: Grace Road North to the Matsqui Slough (12 Homes)

- Issued 2021NOV14 for Clayburn Area: Clayburn Village and surrounding area (30 Homes)
- Issued 2021NOV14 for Eagle Mountain Area: Cranberry Court, Briarwood Place, Doneagle Place (12 -15 Homes)
- Issued 2021NOV14 for Ten Oaks: Mount Blanchard Court, Mount Blanchard Drive and Old Clayburn Road (30 Homes)
- Expanded 2021NOV15 for Sumas Prairie: Westside of Whatcom Road, East of Huntingdon Village, Southside of Vye Road; Westside of Sumas Way to West of Riverside Road, East of Sumas River Dike to Boundary Road (140 Homes)
- Expanded 2021NOV15 for Straiton Areas: Dawson Road East of Sumas Mountain Road, Straiton Road between Old Clayburn Road and Sumas Mountain Road (60 Homes)
- **Homes Alerted:** to be confirmed
- **Orders: 4**
 - Issued 2021NOV15 (2 Orders) for Straiton Road (7 Homes, 15 homes)
 - Issued 2021NOV15 for Sumas Prairie including the area bordered by: Sumas Mountain, and Yale Road to the North, the US border to the South, the Sumas River dike to the East and Sumas Way to the west (619 homes). On 2021NOV17 the order was partially rescinded for the Huntingdon Area of Sumas Prairie including Huntingdon Village and area west of Sumas Way between the US Border to Lonzo Avenue and were placed back on Alert
 - Issued 2021NOV16 for Sumas Prairie including the area bordered by Sumas Mountain, Delair Road and Old Yale Road to the North; the US border to the south; Chilliwack City border to the east; and the Ridge West of Railway Road to the west (300-500 homes)
- **Homes Ordered:** to be confirmed
- **State of Local Emergency: 1** – issued 2021NOV15 and expires 2021NOV23 at midnight
- **Reception Centre(s): 1**, Tradex, 1190 Cornell Street (RC and GL - hours of operation: 24/7)
- **Individuals Registered with ESS:** 642 registered to date, 118 persons in group lodging
- Currently focused on evacuation orders and alerts expanded to include both the east and west sides from the of the dike at Sumas River
- The dike at the Sumas River is at spill levels and the City has a contractor reinforcing the dike at specific locations and have changed their strategy from riprap to block for better stability and less resources to construct
- Utilizing SAR resources, RCMP and Fire to deliver notices to impacted homes
- Mutual Aid is being requested from the local SAR teams
- Reception Centre is located at the Abbotsford Recreation Centre (ARC) 2499 McMillan Road for any residents displaced due to the flooding and/or landslide events currently occurring
- **Road Closures:**
 - Multiple roads are closed due to flooding and/or mudslides. Refer to [Local Government website](#) for list of closures

Bowen Island:

- **Incident:** Flooding
- EOC activated 2021NOV15 due to flooding

Chilliwack:

- **Incident:** Heavy rainfall has resulted in several localized mudslides and flooding causing travellers to be stranded
- **Alerts: 1**
 - Issued 2021NOV16 Yarrow, from Boundary Road to Browne Road, and from the Vedder River to Majuba Hill Road
- **Orders: 4**
 - Issued 2021NOV17 at 1100hrs for property at 47000 block of Yale Road
 - Issued 2021NOV17 at 1100hrs for property at 43000 block of Old Orchard Road
 - Issued 2021NOV16 at 0930hrs for Yarrow, from Boundary Road to Browne Road, and all of Majuba Hill
 - Issued 2021NOV15 at 1230hrs for 4 properties on Yale Road and 3 properties on Chartwell Drive
- **State of Local Emergency: 1**, Expanded 2021NOV16 expires 2021NOV23 at midnight
- **Reception Centres: 1**, Chilliwack Landing Sports Centre, 45530 Spadina Avenue

- **Individuals Registered with ESS:** 750
- **Group Lodging Facilities:** 1, Evergreen Hall, 9291 Corbould Street (160 Registered)
- On 2021NOV16 the State of Local Emergency that was declared on 2021NOV15 for areas of the 47000 block of Yale Road and the 47000 block of Chartwell Drive was cancelled. On 2021NOV16 a State of Local Emergency was declared for the City of Chilliwack
- **Road Closures:**
 - Multiple roads are closed due to flooding and/or mudslides. Refer to Local Government website for list of closures

Coquitlam, City of:

- **Incident:** Flooding
- EOC activated 2021NOV17 to coordinate provision of support, equipment and staffing for other communities
- No uncontrolled flooding or other emergency conditions in Coquitlam
- Specialized rescue services (Coquitlam Fire Rescue) and/or EOC/ESS trained staff available to support other communities if needed

Delta:

- **Incident:** Heavy rain caused localized flooding throughout areas of Delta
- EOC Activated in response to issues related to flooding and high winds
- Working to mitigate localized flooding and support critical infrastructure (drainage stations)
- Working to restore communications (internal and external) to full capacity
- Continuing to monitor and support drainage stations

Fraser Valley Regional District:

- **Incident:** Heavy rainfall causing overland flooding and mudslides
- **Alerts: 1**
 - Issued on 2021NOV15 at 1530hrs for Chilliwack River Valley, FVRD Electoral Area "E" for 7 properties on Obyrne Road
- **Properties Alerted: 7**
- **Orders: 5**
 - Issued 2021NOV15 at 1630 for Cultus Lake, FVRD Electoral Area "H" for 17 properties on Lakeshore Drive
 - Issued 2021NOV15 at 1230hrs for Chilliwack River Valley Electoral Area "E" for 13 properties on Chilliwack Lake Road and 8 properties on Wilson Road
 - Issued 2021NOV15 at 0915hrs for Othello Road, FVRD Electoral Area "B" for 3 properties on Fish Camp Road and 5 properties on Othello Road
 - Issued 2021NOV14 at 1130hrs for Bridal Falls Area, FVRD Electoral Area "D" for 1 property on Bridal Falls Road (24 people)
 - Issued 2021NOV15 at 0030hrs for Chilliwack River Valley, FVRD Electoral Area "E" for 4 properties on Auchenway Road
- **Properties Evacuated: 51**
- **State of Local Emergency: 1** - declared 2021NOV14 at 2230 for all Electoral Areas of the FVRD to remain in force until 2021NOV21 at midnight
- Leisure Valley at Columbia Valley Road, Area H is affected. The local Fire Department is doing a tactical evacuation as needed and overseeing site works to stabilize the scene. The Bell Grove Creek has washed out the shoulder of Columbia Valley Road
- Preliminary Geotechnical Assessment received for Bridal Falls Road shows that the unsafe area extends beyond our current evacuation order area. The Evacuation order will be expanded to include the unsafe lands. All residents willing to evacuate have been evacuated already
- Chilliwack River Valley beyond Edwards Road flooded. MoTI Contractor working on the washout.
- Security in place for Chilliwack River Valley Road, Wilson Road evacuation order

- Taylor Rd: Attended today by Hydrotechnical Engineers to assess the situation. assessment is that there is a section of road/dike that requires immediate attention to be rebuilt. There is no threat of flooding/breaching, however, the structure could fail further which would be a danger to anyone travelling the road/dike. Discussions with Leqamel have indicated that they wish for the FVRD's EOC to coordinate this
- Elbow Creek: Hydrotechnical Engineers assess the situation. Their assessment reported that the seepage experienced 2021NOV15 was due to the high water levels but that the dike was not showing any signs of failure and that no further work is required
- 1,000 sandbags have been sent to Chilliwack River Valley. 4,000 sandbags remaining on Gibson Road, Chilliwack
- Damage assessment required at Hope Recreation Centre

Village of Harrison Hot Springs:

- **Incident:** Flooding along the Miami Slough
- **State of Local Emergency: 1** – declared 2021NOV15 for the Village of Harrison Hotsprings and expires 2021NOV22 at midnight
- EOC activated on 2021NOV15 due to localized flooding along the Miami Slough
- Maintaining pumps at maximum capacity
- Delivering sand and sandbag for public use
- Informing public to minimize toilet and other sewage use (laundry, washing machines, etc)
- Continuing to monitor water levels and deploy additional pumps if required
- Flooding on Highway 9 Harrison Hot Springs Road & McPherson Road. Limited ability to traverse due to water on road

District of Hope:

- **Incident:** Multiple people stranded by highway closures
- **Reception Centre(s):** 1, Hope Secondary School, 444 Stuart St, Hope (hours of operation: 24/7 – warming centre)
- **Individuals Registered with ESS:** unknown
- Multiple Churches have opened to provide support as needed
- Currently no food in town due to no power. Stores/restaurants closed
- Meals flown in via helicopter 2021NOV16 and provided by Salvation Army – Food and cot delivery continued today, 2021NOV17
- The EOC was relocated to the Hospital

District of Kent:

- **Incident:** Landslide threatening people and property along Rockwell Drive
- **Orders:** 1, Issued on 2021NOV15 for Rockwell Drive, Rockwell Lane, Rockwell Place, Pirates Lane, Thunderbird Crescent, and Dogwood Lane
- **State of Local Emergency: 1** – declared 2021NOV14 for Rockwell Drive and expires 2021NOV21 at midnight
- **Homes Evacuated: 6**
- **Reception Centre(s):** 2, (Harrison Hot Springs Resort Hotel; Agassiz Agricultural Hall, 6800 Pioneer Avenue (for evacuees from the Hwy #7 slides))
- **Individuals Registered with ESS: #**
- Multiple landslides on Rockwell Drive (6500, 6900 and 7000 blocks). The road is blocked at the intersection of Lillooet Road
- All properties on Rockwell Drive corridor have been placed on Evacuation Order. The reception centre has been moved from the Morrow Road location and evacuees are being directed to go to the Harrison Hot Springs Resort Hotel. Delivery of Evacuation Orders has been challenging due to life safety issues and is still underway (2021NOV16)
- Water is receding in the Kamp Road area
- Flood pumps at Hammersley Pump Station are again running. Additional pumping capacity is required in Harrison Mills
- **Incident:** Hwy 7 landslide

- Approximately 275 people rescued from Highway 7 2021NOV15
- Crews are working to make access through the slide area
- **Road Closures:**
 - Multiple roads are closed due to flooding and/or mudslides. Refer to Local Government website for list of closures

Langley, Township of:

- **Incident:** Mudslide threatening people and property
- **Homes Evacuated: 1**
- **Individuals Registered with ESS: 2**
- Rainfall caused wide spread flooding on public and private property, as well as parks and trails, and sewer lift stations
- Multiple roads impacted due to flooding
- Engaging geotechnical and structural consultants to assist with slope failures locations when safe to do so

Maple Ridge:

- **Incident:** Localized flooding
- EOC activated in response to localized flooding due to the Alouette River
- Monitored South Alouette, North Alouette and Fraser River flows
- The Fraser River levels continue to drop and the Sanitary Sewer Overflow (SSO) event will transition from an EOC event to an operational response
- The EOC will transition to a virtual format
- Continuing visual inspections along South and North Alouette River

Metro Vancouver Regional District:

- **Incident:** Localized flooding
- EOC activated 2021NOV15 due to localized flooding
- Liquid Waste Services is reporting 8 sewer overflows, and all Wastewater Treatment Plants have had power restored and are operating normally, and within the regulated requirements. Cariboo Dam has been able to manage flows through the Still Creek drainage system throughout the event with minor flooding
- Water Services is monitoring its Dams and is managing turbidity concerns
- Regional Parks currently have 6 parks closed due to flooding conditions, and power has been restored to all locations interrupted 2021NOV15
- Solid Waste Services is reporting all Recycling & Waste Facilities are reopened to full operations. Coquitlam Landfill had an overflow of surface water, which has since been contained and repairs are ongoing to the berm that was damaged
- Gaining situational awareness of impacted infrastructure. Assessing damages and planning for repair or mitigation strategies as required
- **Road Closures:**
 - 56th Ave @ 176th Street, Surrey – Partial lane closure
 - Blundell & Gilbert, Richmond - Alternating traffic (local traffic only)

Mission:

- **Incident:** Localized flooding and mutual aid
- **Orders:** 1, Issued 2021NOV16 for 8 properties located on the 8400 block of Bembow Street in Hatzic (8 properties)
- **Homes Evacuated:** 8 properties
- **State of Local Emergency:** 1, Issued 2021NOV16 to expire on 2021NOV23 at midnight
- **Reception Centre(s):** 1, Virtual
- **Individuals Registered with ESS:** 12
- EOC activated due to localized flooding and to provide mutual aid to Abbotsford

- Mission Virtual RC currently registering evacuees from Kent into the Harrison Hot Springs Hotel using ERA (10 families registered to date, 2021NOV17)
- On 2021NOV16 a State of Local Emergency and an Evacuation Order were issued for properties on Bembow Street in Hatzie
- Virtual Reception Center activated in the EOC to support evacuees from Mission (30 persons) - evacuees will self register for ESS services and all vouchers and supports will be processed online through ERA - Evacuees told to Self-register then call EOC information line for ESS supports (2 persons registered to date)
- ESS requested to support District of Kent with evacuees airlifted from between the mudslides on Highway 7 (50 cots sent to Kent from Mission supply) - Virtual RC will be processing vouchers for Kent evacuees through Mission's virtual RC
- Some road closures continue
- Completing daily assessments of Benbow Street (Mission)
- Continuing to partner with Public Works and City media staff to provide accurate Alertable notifications for road closures
- Two residences on King Avenue are isolated due to complete road wash out

New Westminster:

- **Incident:** Localized flooding
- EOC standing down 2021NOV17

Pemberton:

- **Incident:** Flooding
- EOC activated 2021NOV15 due to flood activity
- Heavy rainfall caused significant flows in Pemberton Creek and the Arn Canal causing localized flooding in low-lying areas
- The neighbourhoods of the Peaks, Pioneer Junction, the Trailer Park on Hwy 99, the Industrial Park and One Mile Lake area have all have experienced substantial flooding
- A sandbag station has been set up at Municipal Hall
- Pumping at the Peaks and Pioneer Junction is ongoing
- One Mile Lake Park, the Boardwalk and trails have been closed due to high water
- Pemberton Fire Rescue was dispatched to assist with pumping in residential areas
- PVDD to continue to monitor rivers, provide ongoing updates, expertise and operational recommendations
- Continuing to liaise with Lil'wat, SLRD and PVDD and relevant agencies to coordinate response
- A significant number of travellers impacted by the Hwy 99/Duffy Lake Road mudslide have been turned around at the slide and have been residing in the Pemberton area.
- Emergency Support Services have been provided to 6 individuals including services provided to those that were referred by the RCMP
- As localized flooding is taking some time to drain, damage and impacts to trails and infrastructure is still unknown

Pitt Meadows, City of

- **Incident:** Heavy rainfall has resulted in multiple roads flooding
- Localized flooding throughout Pitt Meadows. Some areas inundated with water, some roads have been closed and/or have signage placed to be cautious of flooding
- Hammond Road/Airport Way both have localized flooding. Traffic control on scene.
- Dike inspections started
- Inundation mapping from Alouette Dam are being reviewed as they have a freecrest spill peaking around 2400 hr 2021NOV15 at 160 cms. The Pitt River is at high tide for a couple of days
- Alouette River alert notice sent to City Agricultural Advisory Committee
- Determining flood spill conditions and possible scenarios from the Alouette Dam
- Notification to some properties along the Alouette/Pitt Rivers

- Notice to be delivered to property on 224th Ave in regard to potential hazards/flooding due to the freecrest spill from the Alouette Dam

Port Coquitlam:

- **Incident:** Localized flooding
- EOC activated 2021NOV15 due to localized flooding
- Localized flooding has subsided. Drainage infrastructure was at a maximum capacity and now is continuing to lower
- Liverpool sanitation backups cleared back to normal flow
- Sand and bags are available to residents at Public Works Yard

Squamish Lillooet Regional District:

- **Incident:** Flood threat to properties
- **Alerts: 0**
- EOC activated 2021NOV15 due to flood threat to properties and water levels continue to rise
- The evacuation alert issued on 2021NOV15 for Tunnel Station/Upper Paradise Valley – Electoral Area D was rescinded 2021NOV16
- On 2021NOV15 Pemberton Fire Rescue Service advised the SLRD EOC that a mudslide occurred in the vicinity of 1773 Reid Road, inundating the road approx. 1m deep due to a steep creek debris flow
 - MoTI and contractor attended the road washout 2021NOV16, cleared debris, and report that there is now approximately an 8 foot trench in the road. The culvert will likely need to be removed and replaced due to age and damage
 - MFLNRORD conducted an aerial survey of the S2S area 2021NOV16
- The continued closure of the Duffy Lake Road / Hwy 99 and other closures are constraining access around the regional district, and there are a number of stranded travellers in the S2S member municipalities who are unable to get home at this time
- EOC Information Officers continue to receive a volume of media and public enquiries, and to publish regular updates

Squamish District

- **Incident:** Localized flooding due to heavy rainfall. Waste Treatment Plant overflowing
- EOC activated 2021NOV15 due to localized flooding concerns
- Wastewater Treatment Plant is overflowing within the District of Squamish

Sunshine Coast Regional District

- **Incident:** Localized flooding due to heavy rainfall
- EOC activated 2021NOV15 due to localized flooding on Day Road in Roberts Creek
- Stormwater flooding and erosion has impacted public services (drinking water, fire flows, roads, transit, wastewater treatment, parks) in 35+ locations, regionally. Fortis reports exposed gas line at Stephens Road and Lower Road and are preparing for re-routing and/or shutoff.
- Working to protect water supply/infrastructure for public health and fire flow (Chapman Creek main, water mains, McNeill Lake dam, Grantham's pump station)
- Working to protect public health / manage impacts of WWTP failure (notifications)
- Addressing current areas of no road access (washout occurred)
- Addressing potential areas of no road access (impending washout)
- Promoting public safety (park closures, awareness of issues/avoid unnecessary travel)
- Boil water advisories issued (2021NOV15 at 1330)

Surrey:

- **Incident:** Localized flooding
- EOC activated 2021NOV15 due to localized flooding

Vancouver, City of

- **Incident:** Flooding

- EOC activated 2021NOV17 for flood support

Whistler:

- **Incident:** ESS host community
- Providing support to two evacuees who are unable to return home due to the mudslides

AGENCIES

Ministry of Transportation and Infrastructure (MoTI):

- MoTI South Coast Region has activated their Ministry Operations Centre and District Operations Centre

Vancouver Fraser Port Authority (VFPA):

- Communications issues are resolved
- All rail service coming to and from the Port of Vancouver is halted; impacts to supply chain anticipated but unknown at this time; waiting on damage assessment to rail lines and timeframe for re-opening to have a clearer picture on impacts
- Vessel delays and heightened anchorage demand are expected due to disruptions to terminal operations. VFPA are working closely with their terminal operators, railways, and all levels of government to understand the impacts of these delays on terminal operations and to develop a recovery plan
- Freshet-like conditions seen on the Fraser River: request to ship masters to exercise additional caution; potential for overhead clearances being less than advertised on CHS Charts and increased wood debris/heightened shoreline damage from a vessel's wake; additional tug support may be requested to ensure safe passage to and from berth to avoid accumulated debris
- Real-time insights into Port of Vancouver operations can be accessed through the PortVan eHub app, which can be downloaded at <https://www.portvancouver.com/port-dashboard/ehub-app/> or through the App Store. Daily updates on import rail performance and weekly updates on truck terminal turn time performance are available through the port authority's website <https://www.portvancouver.com/port-dashboard/>

HEALTH INFORMATION

No impacts reported

LIVE STOCK IMPACTED

No impacts reported

TRANSPORTATION IMPACTED

Drive BC

Highway 1 Both Directions - Highway 1, in both directions. Mudslide between Annis Rd and K St for 38.4 km (Hope to 2 km east of Chilliwack). Road closed. Estimated time of opening not available. Assessment in progress

Highway 1, in both directions. Flooding between Flood Hope Rd and Junction Hwy 8 for 144.3 km (Hope to Spences Bridge). Rockslide. Road closed. Assessment in progress. Estimated time of opening not available

Highway 1, in both directions. Flooding between Exit 90: McCallum Rd and Exit 109: Yale Rd for 20.1 km (Abbotsford to Chilliwack). The road is closed. Estimated time of opening not available. Assessment in progress

Highway 1, in both directions. Flooding between Exit 90: McCallum Rd and Exit 109: Yale Rd for 20.1 km (Abbotsford to Chilliwack). The road is closed. Estimated time of opening not available. Assessment in progress.

Highway 3 Both Directions. Mudslide at Sunshine Valley (17 km east of Hope). Road Closed. Assessment in progress. Estimated time of opening not available

Highway 5, in both directions. Mudslide at Exit 202 (11 km south of Great Bear Snowshed). Road closed. Assessment in progress. Estimated time of opening not available. Detour not available. Road closed between Hope and Merritt

Highway 7, in both directions. Mudslide between Johnson Slough Rest Area and Ross Rd for 12.6 km (Kent to 1 km east of Hope). Road closed. Assessment in progress. Detour not available

Highway 7 Both Directions - Highway 7, in both directions. Mudslide between Highlands Blvd and Bodnar Rd (Kent). Flooding. Single lane alternating traffic. Watch for traffic control

Highway 11, in both directions. Flooding between Hazelwood Ave and Townshipline Rd for 2.9 km (Abbotsford). Road closed. Detour not available

Highway 99, in both directions. Mudslide between Lil'wat Pl and Seton Lake Rd for 81.9 km (9 km north of Pemberton to Lillooet). Road closed. Estimated time of opening not available. Assessment in progress

King George Blvd., northbound. Bridge closed at Nicomekl Bridge. Assessment in progress. Please use alternate route

UTILITIES IMPACTED

BC Hydro

- 2021NOV17 update - There are currently 1283 customers without power within the Lower Mainland and Sunshine Coast remain without power due to flooding, mud/snow slides and trees down on wires
- [BC Hydro bill help for BC Residents who are evacuated](#)
- **For more information:** <https://www.bchydro.com/power-outages/app/outage-list.html>

BC Hydro Alerts

- Cheakamus Dam Spill Notice of Cancellation – 2021NOV17 at 0930hrs - Present conditions are favourable and flows are expected to decrease
- Stave Falls and Ruskin Dams Spill Notification – 2021NOV16, at approximately 1315hrs decrease will commence at the Ruskin Dam & Stave Falls Dam as inflows are decreasing. Ruskin Dam Spill will decrease from 1400 cubic meters per second (cms) to a flow of 500 cms. Stave Falls Spill will decrease from 1350 cubic meters per second (cms) to a flow of 500 cms.
- Wahleach Dam (Jones Lake) Spill Notification – Notification of planned spill release. Lower Jones Creek water levels will rise and may approach bankfull conditions, but no major flooding is expected. The current reservoir elevation is 642.31m. The current release is ~50 cms (cubic meters per second). Forecast spill is reducing, reservoir lowering. The reason for spill inflows event and plant outage
- 2021NOV16 The previously declared flood alert, # ALU_01_2021, downstream of Alouette Dam has been rescinded
- 2021NOV16 the previously declared flood alert # WAH_01_2021 downstream of Wahleach Dam has been rescinded
- 2021NOV16 the previously declared flood alert # CMS_01_2021 downstream of Cheakamus Dam has been rescinded

Enbridge Inc.

- Due to heavy rainfall and increasing river flows, Enbridge has shut down a segment of 30-inch natural gas pipeline in the Coquihalla river valley on the morning of 2021NOV16 as a precautionary measure. The 36-inch natural gas pipeline remains in operation.
- Continuing to monitor the situation and will take further action should they become necessary.

USEFUL LINKS/RESOURCES

[EMBC Current Flooding Information](#)

[River Forecast Centre](#)

[Drive BC](#)

[Environment Canada](#)

[Avalanche Canada Weather Forecast](#)

[BC Hydro](#)

[Disaster Financial Assistance Website](#)

APPROVED BY:

Original signed by

Debbie Alexander

PREOC Deputy Director

Note: Information contained in this situation report is for operational purposes only. The contained information is not meant for public information. If you wish you use contained information for a media release, you must clear it with the PREOC Director.



PECC ACTIVATION DAY NO. 3

NOVEMBER 17, 2021

Hazard(s): Atmospheric River Storm

Operational Period: November 17, 2021, 08:00 hrs to Closing

Next Sitrep will be issued: November 18, 2021

Primary PECC E-mail: s.17

Primary PECC Phone: s.17

Information current as of Nov 17, 2021 at 17:00h

***New information is noted in blue font**

Note: Information contained in this situation report is for operational purposes only. The contained information is not meant for external dissemination. If you wish to use information contained herein for release, you must clear it with the PECC Director.

PROVINCIAL SITUATION

The EMBC Provincial Emergency Coordination Centre (PECC) is activated today in support of three Provincial Regional Emergency Operations Centres (PREOCs) and the impacts of the atmospheric river storm event that resulted in multiple flooding, landslide, mudslide, power outages and other human consequence impacts along the BC southern coastal and interior regions.

This afternoon, a Provincial State of Emergency was declared to mitigate impacts on transportation networks, facilitate movement of essential goods and supplies, and to support the provincewide response and recovery from the widespread damage caused by severe flooding and landslides in BC.

The state of emergency, initially in effect for 14 days, ensures federal, provincial, and local resources can be delivered in a coordinated response to protect the public, which remains the provincial government's top priority.

The focus is on clearing, repairing and reopening roads to connect the Interior and the North to the Lower Mainland and Vancouver Island so that supply chains begin moving and stranded travelers return home. The federal government has responded to and accepted British Columbia's requests for assistance. In the coming days additional federal resources and personnel will be arriving in BC to assist.

Disaster Financial Assistance (DFA) has been approved for flooding in the Vancouver Island & Central Coast, Southwest, and Central regions of the Province, including all First Nations communities, electoral areas, and municipalities within these Regions.

WEATHER OUTLOOK AND ALERTS

Flood Safety, Water Management Branch Weather Outlook

- Generally, drier conditions are expected in the short term, and river levels are expected to continue to recede throughout the week

- Light precipitation is expected for some areas later in the week; however, no significant flow rises are currently projected
- Systems with lake or reservoir-fed watersheds are receding more slowly
- Areas close to the Sumas River continue to experience high water conditions
- Many river systems remain sensitive due to high flows, and will be closely monitored

RIVER FORECAST CENTRE (RFC) WATCHES AND WARNINGS

EMBC Central Region

RFC has downgraded Flood Watches to High Streamflow Advisories for:

- Lower Nicola River
- Coldwater River

EMBC Southwest Region

RFC is maintaining Flood Warnings for:

- Sumas River and areas around the US Border

And downgraded Flood Warnings to High Streamflow Advisories for:

- Fraser Canyon tributaries, including tributaries around Hope
- Fraser Valley
- Chilliwack River

EMBC Vancouver Island Central Region

High Streamflow Advisory maintained for:

- Cowichan River

HUMAN CONSEQUENCE IMPACTS

PROVINCIAL SUMMARY

The following table depicts impacts related only to the recent BC atmospheric river storm event. While the information reflects the best current situational awareness of the event, it may be subject to revision.

	CTL	NWE	NEA	SEA	SWE	VIC	Totals
Band Council Resolutions	3 (+2)						3 (+2)
States of Local Emergency	8 (-1)				4	2	14 (-1)
Evacuation Orders	16 (-6)				14 (+2)	2 (-2)	32 (-6)
Properties on Order	3,432 (+142)				2,135 (+446)	16 (-31)	5,583 (-335)
Population on Order	9,948 (+198)				6,618 (-1,185)	159 (-63)	16,725 (-1,050)
Evacuation Alerts	6 (+1)			0 (-1)	6 (+1)	6 (+6)	18 (+5)
Properties on Alert	400 (-2,968)			0 (-10)	707 (-453)		1,107 (-2,529)
Population on Alert	1,243 (-3,236)			-	1,905 (+1,185)		3,148 (-2,051)

EMERGENCY SUPPORT SERVICES (ESS)

- The Provincial ESS Call Centre is receiving a consistently high call volume and has extended its hours of operation.
- Buses are moving evacuees from Kamloops to Kelowna if they need accommodation support.
- ESS HQ Staff are supporting the City of Abbotsford by supplying personnel to their Reception and Group Lodging sites (which also being supported by the Samaritan's Purse organization).
- Billeting has been approved for host families taking care of stranded travellers.
- Road closures has complicated the deployment of volunteers/mutual aid.
- Food referrals are no longer being provided out of the Kelowna Reception Centre as there are food supply challenges for grocery and restaurant providers
- Stranded travellers are asked to attend Reception/Warming Centres for Group Lodging support, food and water while waiting for roads to re-open

- Mental Health Supports have been requested at Reception Centres and will be supported by Disaster Psycho-Social staff.

Reception Centre locations are posted publicly on Emergency Info BC.

FLOOD IMPACTS

INFRASTRUCTURE & TRANSPORTATION

HIGHWAYS

- Highway Closures:
 - Highway 1 (Hope to Spences Bridge). DriveBC shows closed with no estimated time of re-opening available.
 - Highway 3 (Sunshine Valley) Drive BC shows UFN closure Between Sunshine Valley and Allison Pass.
 - Highway 5 (Hope – Merritt) Closed and severely impacted.
 - Highway 7 (Maple Ridge – Hope) Drive BC reporting single lane alternating.
 - Highway 8 (Merritt to Spences Bridge) Drive BC reporting UFN closure in both directions.

Impacts on the Transportation Sector

Canadian Pacific Railway (CPR)

- No estimate provided at this time for track re-opening. 47 trains are currently staged.
- Road access for movement of equipment & resources remains a challenge. All employees & contractors have been provided letters indicating they are critical service providers to hasten their movement through highway check points.

Canadian National (CN)

- Still on target for re-opening the Yale sub (Boston Bar – Vancouver) for rail traffic later today (after 1600 PST) once track patrols are completed.
- Ashcroft sub (Kamloops – Boston Bar) remains closed to rail traffic. Restoration work continues with no update to estimated time of re-opening.

Transport Canada Actions:

Civil Aviation

- NOTAMS were issued by airport operators to restrict operations to emergency support aircraft only for Langley Airport, Chilliwack Airport, and Hope Airport.

Marine Safety

- Is working on the details of an Interim Order to restrict the recreational use of pleasure craft in flooded areas.

UTILITIES/ TELECOMMUNICATIONS

- BC Hydro
 - BC Hydro is reporting less than 3,000 customers affected with outages.
- International/Interprovincial Powerlines (IPLs):
 - At present, there are no known or reported impacts to CER-regulated IPLs in BC.
- Fortis BC:
 - There are no reported Station Control or supply issues.
 - No impact to assets; standing water around the station is receding, and there remains no impact/damage to piping.

- There are no supply concerns at this time; however, with the Enbridge 30"-line shut-in, Fortis has reduced flow by 25% and is looking at ways to increase system capacity in the event there is a disruption to the 36" line.
- The company is contingency planning for different potential supply scenarios.
- Fortis, Enbridge, and NW Pipe are coordinating gas control to align operational plans. Princeton - Due to flood conditions, it has been challenging to assess the damage but FortisBC has a restoration plan in place that they are ready to execute starting Wednesday morning.
- **Telecommunications:**
 - Telus has an active outage in Spences Bridge area due to cable damage from landslide. Due to safety reasons, service technicians are standing down, and will continue to work with local authorities to ensure safe access to the site as quickly as possible. Estimated time of repair is early morning Nov. 18.
 - Shaw has outages in the CTL Region. Technicians are on site working to restore service as quickly as possible. No ETA at this time but will continue to monitor the situation and provide updates when available.
 - **ISED reports:**
 - Telecom carriers are reporting recovery to several cell sites in the affected areas and gradual stabilization of networks.
 - After a helicopter flyover, a carrier has identified a location for the installation of a fiber optic bypass. Work began early today with an aggressive target of being installed within a day or two. This will add a third route in addition to the path along HWY 99 as a contingency back-up route.
 - Some carriers reported continuing wireless congestion in the areas where evacuees are congregating.

CROSS-MINISTRY AND AGENCY UPDATES

HEALTH

- No new information.

CANADIAN ARMED FORCES

CAF Air Task Force (ATF):

- 17 Nov: A CH148 Cyclone has been identified as available to the Province. A CH146 Griffon is inbound to Kamloops for an evening arrival. A CC130 Hercules is inbound to Edmonton for an evening arrival.
- 18 Nov: Both helicopters are tasked to complete a recce flight for FLNRORD/EMBC. Potential Hercules task for moving dialysis and chemotherapy patients if able to land/take off in Chilliwack.

CAF Land Task Force (LTF):

17 Nov: LTF recce team arriving in Surrey.

18 Nov: Team will receive brief at SWE PREOC to determine best plan for using land forces to include basing locations and tasks.

CAF Liaison Officers:

- 1 JTFP LO at EMBC PECC
- 1 JTFP LO at SWE PREOC
- 1 JTFP LO to arrive at CTL PROC 18 Nov.

Aircraft assigned to the Province:

- 1 x CH146 Griffon, Kamloops potentially moving to Abbotsford tomorrow 18 Nov.
- 1 x CH148 Cyclone, Victoria.
- 1 x CC130 Hercules, Edmonton

AIR/SAR BRANCH

The EMBC AIR/SAR Branch was activated today in support of the evacuations due to floods.

AIR BRANCH

- Coordinated urgent GeoBC overflight for orthographic imaging of flood extent
- Open discussion of military support for overflight of Fraser river debris trap for River Forecast Centre
- Anticipating 2 med rotary wing with NVG capability
- Heavy lift helicopters are a few days out if still required
- Confirmed fuel supply at Abbotsford Airport is adequate for anticipated operations
- RCMSAR has offered assistance.

High Level SAR Activation Summary: November 14/21 1300 – Nov. 16/21 1300:

- 37 SAR Incident(s) with 290 Public Safety Lifeline Volunteers (PSLVs) responded
- 21 Civil Emergency Response(s) with 266 PSLVs responded

GSAR GROUP UPDATES

Southwest

Hope

- GSAR Group is isolated due to road closures
- GSAR Group is rested

Chilliwack

- Working on clearing people from the Sumas prairie using boats and rafts
- GSAR Group is also isolated due to road closures
- Assisting Central Fraser Valley SAR as well as the RCMP in conducting rescues across the Sumas Prairie

Coquitlam

- GSAR Group not directly affected by flooding
- Regional HETs team working with CFVSAR on the Sumas Prairie South Fraser

Kent Harrison

- GSAR Group is isolated due to road closures. Only connection is with Chilliwack
- SAR trucks were caught behind a landslide but since then Rescue truck was recovered and other truck was left behind for transport to deliver evac notices.
- Some equipment recovered from behind a slide

- GSAR Volunteers delivering evacuation notices by boat
- GSAR Volunteers got a night's sleep and moral is good

Central Fraser Valley

- Directly impacted by the flooding (Sumas prairie)
- Conducting evacuations on the Sumas Prairie
- Conducted significant operations across the Sumas Prairie with support from five GSAR Groups and multiple municipal fire departments across the Southwest
- Three aircraft providing Class D Helicopter Rescue (North Shore Rescue, Coquitlam, Chilliwack), boats (Coquitlam, Ridge Meadows) and vehicles were used to rescue subjects
- As of 1400 Central Fraser Valley SAR reported the number of subjects requiring rescue had greatly decreased and it was possible to travel by vehicle across a significant portion of the Sumas Prairie

Mission

- Did a rescue of 6 subjects in their area due to road wash out
- Assisting Central Fraser Valley SAR with watercraft and personnel for evacuation of the Sumas prairie

Ridge Meadows

- GSAR Group not directly affected by the flooding
- GSAR Group has the capability to provide mutual aid
- Assisting Central Fraser Valley SAR with watercraft and personnel for evacuation of the Sumas prairie

CTL SAR Group Updates:

Princeton

- GSAR Group was exhausted as of November 15, Penticton provided coverage
- Community has been impacted by flooding waters. SAR Hall has been used for operations
- Tasked to do door to door search at residences in downtown Princeton. Still have members from Vernon, Penticton and Osoyoys on scene.
- Team is rested

Nicola Valley

- Municipality under Evacuation Order
- Response capacity is reduced, but no request for replacement
- Unable to deploy out of area, minimal resources available
- GSAR Group is doing well
- Water levels appear to be dropping; however, the Coldwater River continues to cut parts of the City

Kamloops

- High operation temp November 11 – 15 created fatigue
- Response truck has been recovered
- Active on non-flood related GSAR Incidents
- L2 SARM unavailable for several days
- Anticipating continuing an ongoing search on Saturday Nov 23rd

Vernon

- Winch is unavailable with no ETA of return
- Low in SAR Managers

AGRICULTURE

Report on Dairy

- 62 dairies under Evac Order. This represents about 11,000 milk cows and another 11,000+ replacement dairy stock.
- Reports from BC Dairy indicate that some dairies & animals have been evacuated, but no confirmation on exact numbers.
- Animal Nutrition Association of Canada (ANAC), BC Division issued a Notice to Producers today (Nov 17, 2021) explaining that feed grains & protein supplements would no longer be delivered to dairies, instead redirected to poultry & pork sectors.
- Feeding only forages to a dairy animal not only impacts production, but predisposes animals to health problems (i.e., ketosis; milk fever).
- Biggest issue with trapped dairy herds now is 'water'. Without water, milk cows will soon become severely dehydrated thus compromising health & life. High # milk cows now without water for 17-18 hours. This is now CRITICAL to survivability.
- Approximately 80% of BC milk supply is inaccessible.
- Industrial plants are being shorted of milk & reports of potential shutdowns. BCMMB does not generate its daily report until 4:30 pm. Fluid milk plants are a priority to get milk to first, but even those are being shorted milk.
- BC Dairy has 6 staff attempting to call all 62 dairies under Evac Order.
- Severe infrastructure damage to barn and equipment. Will be high demand to get contractors in and building supplies and time to repair and get many dairies operational again.
- Many reports of manure pits that are full and overflowing, and milk is being dumped into pits and part of overflow. No where else to dispose of the milk.

PROVINCIAL REGIONAL UPDATES

SOUTHEAST REGION (SEA)

The **SEA PREOC** is not activated, but Regional Duty Managers are responding to flooding within the region.

Regional District of East Kootenay - RDEK EOC activated at Level 2 in support of both the City of Fernie and RDEK flood response.

- **RDEK EA "A" – Hosmer:**
 - An Alert was issued for 11 homes, now rescinded.
 - On Nov. 16, Water Stewardship issued RDEK an emergency in-stream works permit to allow equipment to clear out approximately 200 m3 of material at the confluence between Mine and Hosmer Creeks, allowing flood waters to return to the creek channel. This work was successfully completed on Nov 17.
- **City of Fernie:**
 - Coal Creek scoured and undercut Coal Creek Rd and Montane Parkway making them impassable.
 - Several public buildings experienced minor flooding and several calls for basement flooding. Hartley Creek flooded Hwy 3 with a detour in effect via Dicken Rd.
 - A sewer trunk line near Zwaryck Rd may become compromised if further scouring occurs. Geotechnical expertise is required to assess bank stability.
 - The community suffered significant damage to recreational areas, including a soccer field and the majority of Fernie's in-town trail network.

CENTRAL REGION (CTL)

CTL PREOC has activated in response to flooding.

KEY CTL REGIONAL INFORMATION

Total Active Alerts: 6 (-3)

Total Orders: 13 (-1)

Total States of Local Emergency: 7(+2)

Total Band Council Resolutions: 4(+1)

FIRST NATIONS

- Coldwater First Nation
 - Band Council Resolution.
 - IR #2 has been isolated and is without water and power.
- Cook's Ferry Indian Band
 - Band Council Resolution.
 - One Alert for IRs #2, 3, 4A, 4B, 4C, 5, 5A, 6, 8, 8A, 9, 10, 11, 11A, 16, 17, 18, 19, 20, 21 & 22.
 - Two Orders for #1 and IR#7.
- Lower Similkameen Indian Band
 - Band Council Resolution.
 - Chopaka bridges have been compromised and are closed in both directions.
 - One Alert for Chopaka IR #7/8; Similkameen IR #2, Alexis IR #9, Ashnola IR #10.
- Lytton First Nation
 - Community is without power.
 - Water system currently not operational.
- Nicomen Indian Band
 - Bridge has been washed out
- Nooaitch First Nation
 - Band Council Resolution.
 - Two bridges washed out.
 - Community is isolated and without power.
 - Community is sheltering in place.
 - A reconnaissance flight occurred November 17, 2021 with members from Nooaitch Indian Band and staff from FLNRORD
- Okanagan Indian Band
 - 1 Alert issued for located North of Westside road from 12020 Westside Road to 11820 Westside Road including residents on Tatalux and North Tatatlux Roads
- Siska First Nation
 - BCR and SOLE issued on Nov. 16, 2021
- Shakan First Nation
 - Band Council Resolution Declared
 - Evacuation Order issued for IR# 11
 - Community is without power as of November 16, 2021
- Skuppah Indian Band
 - George Rd washout has caused there to be no access to the water treatment plant.
 - IR #4 water intake has been washed out.
 - Currently relying on the remaining water supply in their reservoir.

LOCAL AUTHORITIES

- Columbia Shuswap Regional District
 - Activated the EOC to a level one on November 15, 2021 in response to flooding and sandbag requests.
- District of Lillooet
 - Activated November 15, 2021 to provide ESS to people stranded due to road closures - Lillooet Friendship Centre Society providing group lodging and assisting with food when necessary.
- City of Merritt
 - State of Local Emergency Declared.
 - Evacuation Order Issued: Entire Community (approx. 7800 people), due to failure of sewage treatment plant (unsanitary conditions).
 - The wastewater treatment plant is down, with no estimated date for bringing it online
 - The water system is contaminated because of a well malfunction and the City has turned the water off.
 - Middlesboro Bridge has collapsed.
 - Water levels have receded significantly.
 - Barricade systems have been formalized and currently bridges are not being crossed for any reason until structural assessments are completed.
- Town of Princeton
 - State of Local Emergency declared.
 - 3 Evacuation Order Issued: Properties along the Tulameen River. **RESCINDED**
 - 3 Evacuation Alerts Issued: Properties along the Similkameen & Tulameen Rivers.
 - The sewer system is up and running with minor silt issues.
 - Boil water advisory in place; downtown core is under “do not consume” order.
- Regional District Okanagan-Similkameen
 - EOC Activated
 - RDOS EAB – 1 Alert for low-lying properties along the Similkameen River. 1 order for 4 properties on Chopaka Road.
 - RDOS EAG – 1 Alert for low-lying properties along the Similkameen River, 1 order for properties Schedule 1.
 - RDOS EAH – 1 Alert for low-lying properties along the Similkameen River, 2 orders for the community of Coalmont.
 - RDOS – Keremeos – One Alert for low-lying properties along the Similkameen River within the Village of Keremeos. **RESCINDED**
- Thompson Nicola Regional District
 - TNRD – Nicola - RCMP requested to assist with wellness checks and determine if evacuation is required. TNRD co-ordinating transport of rescues from Merritt to Kelowna for ESS.
 - TNRD – One Alert issued for the following Electoral Areas:
 - Electoral Area “I” (Blue Sky Country) **RESCINDED**
 - Electoral Area “M” (Beautiful Nicola Valley – North) **RESCINDED**
 - Electoral Area “N” (Beautiful Nicola Valley – South) **RESCINDED**
 - TNRD – Brookmere – 2 Orders for 51 properties in Brookmere and 2 properties in EA “N”. **RESCINDED**

SOUTHWEST REGION (SWE)

SWE PREOC activated today in response to flooding.

KEY SWE REGIONAL INFORMATION

Total Active Alerts: 10

Total Orders: 16(+6)

Total States of Local Emergency: 7(+2)

Total Band Council Resolutions: 0

FIRST NATIONS

- Chawathil First Nation
 - EOC activated for flooding. 1 home is flooding and material is sliding off bluffs around the community
- Kwikwetlem First Nation
 - EOC activated for flooding.
 - Put on flood alert from BC Hydro Dams. **RESCINDED**
- Leq'á: mel First Nation
- Lower SStl'atl'imx (LSTC)
 - Approximately 60 households are without power in Samahquam and Skatin.
 - LSTC has spoken to FLNRO, BC Hydro, and Lizzie Bay/IRM to coordinate efforts to restore power and access. FLNRO and BC Hydro will have assessment crews out first thing 2021NOV16 to begin the repair/reconnection of power lines and routes
 - In-SHUCK-ch FSR - Road access to north to Pemberton has not been established for all communities.
- Musqueam First Nation:
 - EOC activated due to flooding.
- Matsqui First Nation
 - Band Council Resolution
 - Requested sandbags and sand due to localized flooding on IR 2 and IR 4.
- Peters First Nation
 - EOC activated due to flooding.
- Seabird Island
 - EOC activated for flooding.
 - Group lodging was set up for stranded motorists. Breakfast and lunch provided for 8 truck drivers.
 - Currently Seabird Island has endured flooding of several homes and is still in high water advisory. Crews are assessing damage.
 - TELUS fiber connection from Hope is not functional, temporarily lost communication
- Shxw'ha:y Village First Nation
 - EOC is activated in support of the flooding and landslide response in the region
- Shsw'ow'hamel First Nation
 - EOC activated for flooding.
- Skawahlook First Nation
 - EOC activated for flooding.
- Soowahlie First Nation:

- EOC activated for flooding.
 - Currently no power or water due to flooding activity.
- Spuzzum First Nation
 - EOC activated for flooding
 - Flooding is impacting drinking water in community
- Squamish First Nation:
 - EOC activated for flooding.
- Sts'ailes First Nation:
 - Currently 2 flooded houses and 1 mobile home with water underneath. Community is currently out of sandbags.
- Sumas First Nation
 - EOC activated for flooding

LOCAL AUTHORITIES

- City of Abbotsford
 - State of Local Emergency declared
 - 4 Evacuation Orders Issued
 - Straiton Road (22 Homes)
 - Sumas Prairie including the area bordered by Sumas Mountain, DeLair Road and Old Yale Road to the North, The USA Border to the South, Chilliwack City border to the East, The Ridge West of Railway Road to the West (1700 Homes)
 - The order was partially rescinded for the Huntingdon Area of Sumas Prairie including Huntingdon Village and area west of Sumas Way between the US Border to Lonzo Avenue and were placed back on Alert
 - Alert for Sumas Prairie including the area bordered by Sumas Mountain, Delair Road and Old Yale Road to the North; the US border to the south; Chilliwack City border to the east; and the Ridge West of Railway Road to the west (300-500 homes)
 - Total numbers of homes on orders are still to be determined.
 - 8 Evacuation Alerts Issued
 - Sumas Prairie: The Southern Rail Line to the West, Whatcom Road to the East, Highway 1 to the North, United States Border to the South (1700 Homes).
 - for Matsqui Village: Grace Road North to the Matsqui Slough (12 Homes).
 - Clayburn Area: Clayburn Village and surrounding area (30 Homes).
 - Eagle Mountain Areas: Cranberry Court, Briarwood Place, Doneagle Place (12 - 15 Homes).
 - Ten Oaks: Mount Blanchard Court, Mount Blanchard Drive and Old Clayburn Road (30 Homes).
 - Sumas Prairie: Westside of Whatcom Road, East of Huntington Village, Southside of Vye Road; Westside of Sumas Way to West of Riverside Road, East of Sumas River Dike to Boundary Road (140 Homes).
- Bowen Island
 - EOC activated due to flooding
- City of Chilliwack
 - 1 Alert for Yarrow, from Boundary Road to Browne Road, and from the Vedder River to Majuba Hill Road.

- 4 Orders, Yarrow, from Boundary Road to Browne Road, and all Majuba Hill and 4 properties on Yale Road and 3 properties on Chartwell Drive. Added Nov 17, one property on Yale road and one on Old Orchard Road.
- Coquitlam
 - EOC activated to coordinate provision of support, equipment and staffing for other communities.
 - No uncontrolled flooding or other emergency conditions in Coquitlam
 - Specialized rescue services (Coquitlam Fire Rescue) and/or EOC/ESS trained staff available to support other communities if needed.
- Delta - EOC Activated in response to issues related to flooding and high winds
- Fraser Valley Regional District
 - State of Local Emergency Declared
 - 1 Alert for Chilliwack River Valley, FVRD Electoral Area "E" for 7 properties on O'Byrne Road.
 - 5 Orders:
 - FVRD EA "B" for 3 properties on Fish Camp Road and 5 properties on Othello Road.
 - FVRD EA "D" for 1 property on Bridal Falls Road (24 people).
 - FVRD EA "E" for 4 properties on Auchenway Road.
 - FVRD EA "E" for 13 properties on Chilliwack Lake Road and 8 properties on Wilson Road.
 - FVRD EA "H" for 17 properties on Lakeshore Drive.
- Village of Harrison Hot Springs – EOC activated due to flooding in the Miami Slough.
- District of Hope
 - Access from all Highways (1,3,5) cut off.
 - Significant power outages for much of the day (w/hospital on generator)
 - Currently no food in town due to no power. Stores/restaurants closed.
 - Meal flown in via helicopter 2021NOV16 and provided by Salvation Army.
 - Food and cot delivery continued today.
- District of Kent
 - 1 Orders for Rockwell Drive, Rockwell Lane, Rockwell Place, Pirates Lane, Thunderbird Crescent, and Dogwood Lane (6 homes).
 - All properties on Rockwell Drive corridor have been placed on Evacuation Order.
 - Approximately 275 people rescued from Highway 7 on Nov. 15
 - Crews are working to make access through the slide area
- City of Langley – EOC activated
 - Rainfall caused widespread flooding on public and private property, as well as parks and trails, and sewer lift stations.
 - Multiple roads impacted due to flooding.
- Maple Ridge- EOC activated
 - The Fraser River levels continue to drop, and the Sanitary Sewer Overflow (SSO) event will transition from an EOC event to an operational response.
- Metro Vancouver- EOC activated
- Mission - EOC activated
 - 1 order issued for 8 properties located on the 8400 block of Bembow Street in Hatzic (8 properties).
- New Westminster – EOC standing down.

- Pemberton – EOC activated.
 - The neighbourhoods of the Peaks, Pioneer Junction, the Trailer Park on Hwy 99, the Industrial Park and One Mile Lake area have all have experienced substantial flooding.
 - A sandbag station has been set up at Municipal Hall.
- Pitt Meadows
 - Determining flood spill conditions and possible scenarios from the Alouette Dam
 - Notification to some properties along the Alouette/Pitt Rivers.
- Port Coquitlam - EOC activated.
- Squamish Lillooet Regional District – EOC activated.
 - The continued closure of the Duffy Lake Road / Hwy 99 and other closures are constraining access around the regional district, and there are a number of stranded travellers in the S2S member municipalities who are unable to get home currently.
- Sunshine Coast Regional District – EOC activated.
 - Stormwater flooding and erosion has impacted public services (drinking water, fire flows, roads, transit, wastewater treatment, parks) in 35+ locations, regionally. Fortis reports exposed gas line at Stephens Road and Lower Road and are preparing for re-routing and/or shutoff.
- Surrey – EOC Activated.
- Vancouver
 - EOC activated for flooding

VANCOUVER ISLAND AND CENTRAL COAST REGION (VIC)

VIC PREOC activated today in response to flooding.

KEY VIR REGIONAL INFORMATION

Total Active Alerts: 1

Total Orders: 1

Total States of Local Emergency: 1

Total Band Council Resolutions: 0

FIRST NATIONS

- Halalt First Nation:
 - 150 evacuees, Flooding for 30 homes due to a watermain break and overland flooding. RDA for 2 homes requested, CVRD assisting.
- Snuneymuxw First Nation:
 - 25 evacuees (approximate), reviewing impacts to several septic tanks in the area.
- Penelakut First Nation:
 - 50 evacuees (approximate.)
- Cowichan Tribes:
 - 120 evacuees (approximate).
 - Evacuation order remains in place for Sahilton road, alerts remain in place for other areas impacted by the flood as river is still very high, with rain in the forecast.
- Pauquachin First Nation
 - Flooding event. Pumps likely needed.

LOCAL AUTHORITIES

- Cowichan Valley Regional District:
 - Major flooding event taking place in the Cowichan region due to heavy rainfall over the past 48 hours - Multiple road closures (incl. highway), restricting areas throughout the region, including within the boundaries of the Municipality of North Cowichan.
 - SOLE was issued at 1100 hrs on 2021-11-15 - 4 Evacuation Orders in effect - incl. CVRD, Cowichan Tribes, Halalt and Penelakut First Nations.
- Nanaimo Regional District:
 - States of Local Emergency in place.
 - 1 Evacuation Order remains, 2 orders rescinded: Nanaimo River and Cedar Grove/Riverside/Waters Road.
- Capital Regional District
 - EOC Activated. Highway 1 in both directions reduced to single, alternating route on Malahat. Some localized power outages throughout the CRD. Water service in Fulford Harbour area down for 21 households.
- District of Sooke
 - EOC Activated.
- District of Highlands
 - EOC Activated.
- City of Langford
 - EOC Activated.
 - 20+ properties on alert.
- Central Saanich
 - EOC activated
 - Localized flooding throughout the district. Supporting Public Works within the Brentwood Bay area, liaising with Saanich Peninsula Hospital with resources as needed and status update.

Key Internet Links:

Avalanche Canada Weather Forecast [Drying out at last \(avalanche.ca\)](https://www.avalanche.ca/)

Emergency Info BC

<https://www.emergencyinfobc.gov.bc.ca>

BC Hydro Outage Map <https://www.bchydro.com/power-outages/app/outage-map.html>

BC River Forecast Centre

<https://www2.gov.bc.ca/gov/content/environment/air-land-water/water/drought-flooding-dikes-dams/river-forecast-centre>

Drive BC

<https://www.drivebc.ca/mobile/events/index.html>

Information about Disaster Financial Assistance is available on the DFA web site at

<http://www.gov.bc.ca/disasterfinancialassistance>

APPROVED BY:

Brendan Ralfs
PECC Director

Note: This document may be distributed within your agency. Any distribution outside your agency requires prior approval from the PECC Director



PECC ACTIVATION DAY NO. 3
NOVEMBER 17, 2021

Hazard(s): Atmospheric River Storm

Operational Period: November 17, 2021, 08:00 hrs to Closing

Next Sitrep will be issued: November 18, 2021

Primary PECC E-mail:^{s.17}

Primary PECC Phone:^{s.17}

Information current as of Nov 17, 2021 at 17:00h

***New information is noted in blue font**

Note: Information contained in this situation report is for operational purposes only. The contained information is not meant for external dissemination. If you wish to use information contained herein for release, you must clear it with the PECC Director.

PROVINCIAL SITUATION

The EMBC Provincial Emergency Coordination Centre (PECC) is activated today in support of three Provincial Regional Emergency Operations Centres (PREOCs) and the impacts of the atmospheric river storm event that resulted in multiple flooding, landslide, mudslide, power outages and other human consequence impacts along the BC southern coastal and interior regions.

This afternoon, a Provincial State of Emergency was declared to mitigate impacts on transportation networks, facilitate movement of essential goods and supplies, and to support the provincewide response and recovery from the widespread damage caused by severe flooding and landslides in BC.

The state of emergency, initially in effect for 14 days, ensures federal, provincial, and local resources can be delivered in a coordinated response to protect the public, which remains the provincial government's top priority.

The focus is on clearing, repairing and reopening roads to connect the Interior and the North to the Lower Mainland and Vancouver Island so that supply chains begin moving and stranded travelers return home. The federal government has responded to and accepted British Columbia's requests for assistance. In the coming days additional federal resources and personnel will be arriving in BC to assist.

Disaster Financial Assistance (DFA) has been approved for flooding in the Vancouver Island & Central Coast, Southwest, and Central regions of the Province, including all First Nations communities, electoral areas, and municipalities within these Regions.

WEATHER OUTLOOK AND ALERTS

Flood Safety, Water Management Branch Weather Outlook

- Generally, drier conditions are expected in the short term, and river levels are expected to continue to recede throughout the week

- Light precipitation is expected for some areas later in the week; however, no significant flow rises are currently projected
- Systems with lake or reservoir-fed watersheds are receding more slowly
- Areas close to the Sumas River continue to experience high water conditions
- Many river systems remain sensitive due to high flows, and will be closely monitored

RIVER FORECAST CENTRE (RFC) WATCHES AND WARNINGS

EMBC Central Region

RFC has downgraded Flood Watches to High Streamflow Advisories for:

- Lower Nicola River
- Coldwater River

EMBC Southwest Region

RFC is maintaining Flood Warnings for:

- Sumas River and areas around the US Border

And downgraded Flood Warnings to High Streamflow Advisories for:

- Fraser Canyon tributaries, including tributaries around Hope
- Fraser Valley
- Chilliwack River

EMBC Vancouver Island Central Region

High Streamflow Advisory maintained for:

- Cowichan River

HUMAN CONSEQUENCE IMPACTS

PROVINCIAL SUMMARY

The following table depicts impacts related only to the recent BC atmospheric river storm event. While the information reflects the best current situational awareness of the event, it may be subject to revision.

	CTL	NWE	NEA	SEA	SWE	VIC	Totals
Band Council Resolutions	3 (+2)						3 (+2)
States of Local Emergency	8 (-1)				4	2	14 (-1)
Evacuation Orders	16 (-6)				14 (+2)	2 (-2)	32 (-6)
Properties on Order	3,432 (+142)				2,135 (+446)	16 (-31)	5,583 (-335)
Population on Order	9,948 (+198)				6,618 (-1,185)	159 (-63)	16,725 (-1,050)
Evacuation Alerts	6 (+1)			0 (-1)	6 (+1)	6 (+6)	18 (+5)
Properties on Alert	400 (-2,968)			0 (-10)	707 (-453)		1,107 (-2,529)
Population on Alert	1,243 (-3,236)			-	1,905 (+1,185)		3,148 (-2,051)

EMERGENCY SUPPORT SERVICES (ESS)

- The Provincial ESS Call Centre is receiving a consistently high call volume and has extended its hours of operation.
- Buses are moving evacuees from Kamloops to Kelowna if they need accommodation support.
- ESS HQ Staff are supporting the City of Abbotsford by supplying personnel to their Reception and Group Lodging sites (which also being supported by the Samaritan's Purse organization).
- Billeting has been approved for host families taking care of stranded travellers.
- Road closures has complicated the deployment of volunteers/mutual aid.
- Food referrals are no longer being provided out of the Kelowna Reception Centre as there are food supply challenges for grocery and restaurant providers
- Stranded travellers are asked to attend Reception/Warming Centres for Group Lodging support, food and water while waiting for roads to re-open

- Mental Health Supports have been requested at Reception Centres and will be supported by Disaster Psycho-Social staff.

Reception Centre locations are posted publicly on Emergency Info BC.

FLOOD IMPACTS

INFRASTRUCTURE & TRANSPORTATION

HIGHWAYS

- Highway Closures:
 - Highway 1 (Hope to Spences Bridge). DriveBC shows closed with no estimated time of re-opening available.
 - Highway 3 (Sunshine Valley) Drive BC shows UFN closure Between Sunshine Valley and Allison Pass.
 - Highway 5 (Hope – Merritt) Closed and severely impacted.
 - Highway 7 (Maple Ridge – Hope) Drive BC reporting single lane alternating.
 - Highway 8 (Merritt to Spences Bridge) Drive BC reporting UFN closure in both directions.

Impacts on the Transportation Sector

Canadian Pacific Railway (CPR)

- No estimate provided at this time for track re-opening. 47 trains are currently staged.
- Road access for movement of equipment & resources remains a challenge. All employees & contractors have been provided letters indicating they are critical service providers to hasten their movement through highway check points.

Canadian National (CN)

- Still on target for re-opening the Yale sub (Boston Bar – Vancouver) for rail traffic later today (after 1600 PST) once track patrols are completed.
- Ashcroft sub (Kamloops – Boston Bar) remains closed to rail traffic. Restoration work continues with no update to estimated time of re-opening.

Transport Canada Actions:

Civil Aviation

- NOTAMS were issued by airport operators to restrict operations to emergency support aircraft only for Langley Airport, Chilliwack Airport, and Hope Airport.

Marine Safety

- Is working on the details of an Interim Order to restrict the recreational use of pleasure craft in flooded areas.

UTILITIES/ TELECOMMUNICATIONS

- BC Hydro
 - BC Hydro is reporting less than 3,000 customers affected with outages.
- International/Interprovincial Powerlines (IPLs):
 - At present, there are no known or reported impacts to CER-regulated IPLs in BC.
- Fortis BC:
 - There are no reported Station Control or supply issues.
 - No impact to assets; standing water around the station is receding, and there remains no impact/damage to piping.

- There are no supply concerns at this time; however, with the Enbridge 30"-line shut-in, Fortis has reduced flow by 25% and is looking at ways to increase system capacity in the event there is a disruption to the 36" line.
- The company is contingency planning for different potential supply scenarios.
- Fortis, Enbridge, and NW Pipe are coordinating gas control to align operational plans. Princeton - Due to flood conditions, it has been challenging to assess the damage but FortisBC has a restoration plan in place that they are ready to execute starting Wednesday morning.
- **Telecommunications:**
 - Telus has an active outage in Spences Bridge area due to cable damage from landslide. Due to safety reasons, service technicians are standing down, and will continue to work with local authorities to ensure safe access to the site as quickly as possible. Estimated time of repair is early morning Nov. 18.
 - Shaw has outages in the CTL Region. Technicians are on site working to restore service as quickly as possible. No ETA at this time but will continue to monitor the situation and provide updates when available.
 - **ISED reports:**
 - Telecom carriers are reporting recovery to several cell sites in the affected areas and gradual stabilization of networks.
 - After a helicopter flyover, a carrier has identified a location for the installation of a fiber optic bypass. Work began early today with an aggressive target of being installed within a day or two. This will add a third route in addition to the path along HWY 99 as a contingency back-up route.
 - Some carriers reported continuing wireless congestion in the areas where evacuees are congregating.

CROSS-MINISTRY AND AGENCY UPDATES

HEALTH

- No new information.

CANADIAN ARMED FORCES

CAF Air Task Force (ATF):

- 17 Nov: A CH148 Cyclone has been identified as available to the Province. A CH146 Griffon is inbound to Kamloops for an evening arrival. A CC130 Hercules is inbound to Edmonton for an evening arrival.
- 18 Nov: Both helicopters are tasked to complete a recce flight for FLNRORD/EMBC. Potential Hercules task for moving dialysis and chemotherapy patients if able to land/take off in Chilliwack.

CAF Land Task Force (LTF):

17 Nov: LTF recce team arriving in Surrey.

18 Nov: Team will receive brief at SWE PREOC to determine best plan for using land forces to include basing locations and tasks.

CAF Liaison Officers:

- 1 JTFP LO at EMBC PECC
- 1 JTFP LO at SWE PREOC
- 1 JTFP LO to arrive at CTL PROC 18 Nov.

Aircraft assigned to the Province:

- 1 x CH146 Griffon, Kamloops potentially moving to Abbotsford tomorrow 18 Nov.
- 1 x CH148 Cyclone, Victoria.
- 1 x CC130 Hercules, Edmonton

AIR/SAR BRANCH

The EMBC AIR/SAR Branch was activated today in support of the evacuations due to floods.

AIR BRANCH

- Coordinated urgent GeoBC overflight for orthographic imaging of flood extent
- Open discussion of military support for overflight of Fraser river debris trap for River Forecast Centre
- Anticipating 2 med rotary wing with NVG capability
- Heavy lift helicopters are a few days out if still required
- Confirmed fuel supply at Abbotsford Airport is adequate for anticipated operations
- RCMSAR has offered assistance.

High Level SAR Activation Summary: November 14/21 1300 – Nov. 16/21 1300:

- 37 SAR Incident(s) with 290 Public Safety Lifeline Volunteers (PSLVs) responded
- 21 Civil Emergency Response(s) with 266 PSLVs responded

GSAR GROUP UPDATES

Southwest

Hope

- GSAR Group is isolated due to road closures
- GSAR Group is rested

Chilliwack

- Working on clearing people from the Sumas prairie using boats and rafts
- GSAR Group is also isolated due to road closures
- Assisting Central Fraser Valley SAR as well as the RCMP in conducting rescues across the Sumas Prairie

Coquitlam

- GSAR Group not directly affected by flooding
- Regional HETs team working with CFVSAR on the Sumas Prairie South Fraser

Kent Harrison

- GSAR Group is isolated due to road closures. Only connection is with Chilliwack
- SAR trucks were caught behind a landslide but since then Rescue truck was recovered and other truck was left behind for transport to deliver evac notices.
- Some equipment recovered from behind a slide

- GSAR Volunteers delivering evacuation notices by boat
- GSAR Volunteers got a night's sleep and moral is good

Central Fraser Valley

- Directly impacted by the flooding (Sumas prairie)
- Conducting evacuations on the Sumas Prairie
- Conducted significant operations across the Sumas Prairie with support from five GSAR Groups and multiple municipal fire departments across the Southwest
- Three aircraft providing Class D Helicopter Rescue (North Shore Rescue, Coquitlam, Chilliwack), boats (Coquitlam, Ridge Meadows) and vehicles were used to rescue subjects
- As of 1400 Central Fraser Valley SAR reported the number of subjects requiring rescue had greatly decreased and it was possible to travel by vehicle across a significant portion of the Sumas Prairie

Mission

- Did a rescue of 6 subjects in their area due to road wash out
- Assisting Central Fraser Valley SAR with watercraft and personnel for evacuation of the Sumas prairie

Ridge Meadows

- GSAR Group not directly affected by the flooding
- GSAR Group has the capability to provide mutual aid
- Assisting Central Fraser Valley SAR with watercraft and personnel for evacuation of the Sumas prairie

CTL SAR Group Updates:

Princeton

- GSAR Group was exhausted as of November 15, Penticton provided coverage
- Community has been impacted by flooding waters. SAR Hall has been used for operations
- Tasked to do door to door search at residences in downtown Princeton. Still have members from Vernon, Penticton and Osoyoys on scene.
- Team is rested

Nicola Valley

- Municipality under Evacuation Order
- Response capacity is reduced, but no request for replacement
- Unable to deploy out of area, minimal resources available
- GSAR Group is doing well
- Water levels appear to be dropping; however, the Coldwater River continues to cut parts of the City

Kamloops

- High operation temp November 11 – 15 created fatigue
- Response truck has been recovered
- Active on non-flood related GSAR Incidents
- L2 SARM unavailable for several days
- Anticipating continuing an ongoing search on Saturday Nov 23rd

Vernon

- Winch is unavailable with no ETA of return
- Low in SAR Managers

AGRICULTURE

Report on Dairy

- 62 dairies under Evac Order. This represents about 11,000 milk cows and another 11,000+ replacement dairy stock.
- Reports from BC Dairy indicate that some dairies & animals have been evacuated, but no confirmation on exact numbers.
- Animal Nutrition Association of Canada (ANAC), BC Division issued a Notice to Producers today (Nov 17, 2021) explaining that feed grains & protein supplements would no longer be delivered to dairies, instead redirected to poultry & pork sectors.
- Feeding only forages to a dairy animal not only impacts production, but predisposes animals to health problems (i.e., ketosis; milk fever).
- Biggest issue with trapped dairy herds now is 'water'. Without water, milk cows will soon become severely dehydrated thus compromising health & life. High # milk cows now without water for 17-18 hours. This is now CRITICAL to survivability.
- Approximately 80% of BC milk supply is inaccessible.
- Industrial plants are being shorted of milk & reports of potential shutdowns. BCMMB does not generate its daily report until 4:30 pm. Fluid milk plants are a priority to get milk to first, but even those are being shorted milk.
- BC Dairy has 6 staff attempting to call all 62 dairies under Evac Order.
- Severe infrastructure damage to barn and equipment. Will be high demand to get contractors in and building supplies and time to repair and get many dairies operational again.
- Many reports of manure pits that are full and overflowing, and milk is being dumped into pits and part of overflow. No where else to dispose of the milk.

PROVINCIAL REGIONAL UPDATES

SOUTHEAST REGION (SEA)

The **SEA PREOC** is not activated, but Regional Duty Managers are responding to flooding within the region.

Regional District of East Kootenay - RDEK EOC activated at Level 2 in support of both the City of Fernie and RDEK flood response.

- **RDEK EA "A" – Hosmer:**
 - An Alert was issued for 11 homes, now rescinded.
 - On Nov. 16, Water Stewardship issued RDEK an emergency in-stream works permit to allow equipment to clear out approximately 200 m3 of material at the confluence between Mine and Hosmer Creeks, allowing flood waters to return to the creek channel. This work was successfully completed on Nov 17.
- **City of Fernie:**
 - Coal Creek scoured and undercut Coal Creek Rd and Montane Parkway making them impassable.
 - Several public buildings experienced minor flooding and several calls for basement flooding. Hartley Creek flooded Hwy 3 with a detour in effect via Dicken Rd.
 - A sewer trunk line near Zwaryck Rd may become compromised if further scouring occurs. Geotechnical expertise is required to assess bank stability.
 - The community suffered significant damage to recreational areas, including a soccer field and the majority of Fernie's in-town trail network.

CENTRAL REGION (CTL)

CTL PREOC has activated in response to flooding.

KEY CTL REGIONAL INFORMATION

Total Active Alerts: 6 (-3)

Total Orders: 13 (-1)

Total States of Local Emergency: 7(+2)

Total Band Council Resolutions: 4(+1)

FIRST NATIONS

- Coldwater First Nation
 - Band Council Resolution.
 - IR #2 has been isolated and is without water and power.
- Cook's Ferry Indian Band
 - Band Council Resolution.
 - One Alert for IRs #2, 3, 4A, 4B, 4C, 5, 5A, 6, 8, 8A, 9, 10, 11, 11A, 16, 17, 18, 19, 20, 21 & 22.
 - Two Orders for #1 and IR#7.
- Lower Similkameen Indian Band
 - Band Council Resolution.
 - Chopaka bridges have been compromised and are closed in both directions.
 - One Alert for Chopaka IR #7/8; Similkameen IR #2, Alexis IR #9, Ashnola IR #10.
- Lytton First Nation
 - Community is without power.
 - Water system currently not operational.
- Nicomen Indian Band
 - Bridge has been washed out
- Nooaitch First Nation
 - Band Council Resolution.
 - Two bridges washed out.
 - Community is isolated and without power.
 - Community is sheltering in place.
 - A reconnaissance flight occurred November 17, 2021 with members from Nooaitch Indian Band and staff from FLNRORD
- Okanagan Indian Band
 - 1 Alert issued for located North of Westside road from 12020 Westside Road to 11820 Westside Road including residents on Tatalux and North Tatatlux Roads
- Siska First Nation
 - BCR and SOLE issued on Nov. 16, 2021
- Shakan First Nation
 - Band Council Resolution Declared
 - Evacuation Order issued for IR# 11
 - Community is without power as of November 16, 2021
- Skuppah Indian Band
 - George Rd washout has caused there to be no access to the water treatment plant.
 - IR #4 water intake has been washed out.
 - Currently relying on the remaining water supply in their reservoir.

LOCAL AUTHORITIES

- Columbia Shuswap Regional District
 - Activated the EOC to a level one on November 15, 2021 in response to flooding and sandbag requests.
- District of Lillooet
 - Activated November 15, 2021 to provide ESS to people stranded due to road closures - Lillooet Friendship Centre Society providing group lodging and assisting with food when necessary.
- City of Merritt
 - State of Local Emergency Declared.
 - Evacuation Order Issued: Entire Community (approx. 7800 people), due to failure of sewage treatment plant (unsanitary conditions).
 - The wastewater treatment plant is down, with no estimated date for bringing it online
 - The water system is contaminated because of a well malfunction and the City has turned the water off.
 - Middlesboro Bridge has collapsed.
 - Water levels have receded significantly.
 - Barricade systems have been formalized and currently bridges are not being crossed for any reason until structural assessments are completed.
- Town of Princeton
 - State of Local Emergency declared.
 - 3 Evacuation Order Issued: Properties along the Tulameen River. **RESCINDED**
 - 3 Evacuation Alerts Issued: Properties along the Similkameen & Tulameen Rivers.
 - The sewer system is up and running with minor silt issues.
 - Boil water advisory in place; downtown core is under "do not consume" order.
- Regional District Okanagan-Similkameen
 - EOC Activated
 - RDOS EAB – 1 Alert for low-lying properties along the Similkameen River. 1 order for 4 properties on Chopaka Road.
 - RDOS EAG – 1 Alert for low-lying properties along the Similkameen River, 1 order for properties Schedule 1.
 - RDOS EAH – 1 Alert for low-lying properties along the Similkameen River, 2 orders for the community of Coalmont.
 - RDOS – Keremeos – One Alert for low-lying properties along the Similkameen River within the Village of Keremeos. **RESCINDED**
- Thompson Nicola Regional District
 - TNRD – Nicola - RCMP requested to assist with wellness checks and determine if evacuation is required. TNRD co-ordinating transport of rescues from Merritt to Kelowna for ESS.
 - TNRD – One Alert issued for the following Electoral Areas:
 - Electoral Area "I" (Blue Sky Country) **RESCINDED**
 - Electoral Area "M" (Beautiful Nicola Valley – North) **RESCINDED**
 - Electoral Area "N" (Beautiful Nicola Valley – South) **RESCINDED**
 - TNRD – Brookmere – 2 Orders for 51 properties in Brookmere and 2 properties in EA "N". **RESCINDED**

SOUTHWEST REGION (SWE)

SWE PREOC activated today in response to flooding.

KEY SWE REGIONAL INFORMATION

Total Active Alerts: 10

Total Orders: 16(+6)

Total States of Local Emergency: 7(+2)

Total Band Council Resolutions: 0

FIRST NATIONS

- Chawathil First Nation
 - EOC activated for flooding. 1 home is flooding and material is sliding off bluffs around the community
- Kwikwetlem First Nation
 - EOC activated for flooding.
 - Put on flood alert from BC Hydro Dams. **RESCINDED**
- Leq'á: mel First Nation
- Lower SStl'atl'imx (LSTC)
 - Approximately 60 households are without power in Samahquam and Skatin.
 - LSTC has spoken to FLNRO, BC Hydro, and Lizzie Bay/IRM to coordinate efforts to restore power and access. FLNRO and BC Hydro will have assessment crews out first thing 2021NOV16 to begin the repair/reconnection of power lines and routes
 - In-SHUCK-ch FSR - Road access to north to Pemberton has not been established for all communities.
- Musqueam First Nation:
 - EOC activated due to flooding.
- Matsqui First Nation
 - Band Council Resolution
 - Requested sandbags and sand due to localized flooding on IR 2 and IR 4.
- Peters First Nation
 - EOC activated due to flooding.
- Seabird Island
 - EOC activated for flooding.
 - Group lodging was set up for stranded motorists. Breakfast and lunch provided for 8 truck drivers.
 - Currently Seabird Island has endured flooding of several homes and is still in high water advisory. Crews are assessing damage.
 - TELUS fiber connection from Hope is not functional, temporarily lost communication
- Shxwha:y Village First Nation
 - EOC is activated in support of the flooding and landslide response in the region
- Shsw'ow'hamel First Nation
 - EOC activated for flooding.
- Skawahlook First Nation
 - EOC activated for flooding.
- Soowahlie First Nation:

- EOC activated for flooding.
 - Currently no power or water due to flooding activity.
- Spuzzum First Nation
 - EOC activated for flooding
 - Flooding is impacting drinking water in community
- Squamish First Nation:
 - EOC activated for flooding.
- Sts'ailes First Nation:
 - Currently 2 flooded houses and 1 mobile home with water underneath. Community is currently out of sandbags.
- Sumas First Nation
 - EOC activated for flooding

LOCAL AUTHORITIES

- City of Abbotsford
 - State of Local Emergency declared
 - 4 Evacuation Orders Issued
 - Straiton Road (22 Homes)
 - Sumas Prairie including the area bordered by Sumas Mountain, DeLair Road and Old Yale Road to the North, The USA Border to the South, Chilliwack City border to the East, The Ridge West of Railway Road to the West (1700 Homes)
 - The order was partially rescinded for the Huntingdon Area of Sumas Prairie including Huntingdon Village and area west of Sumas Way between the US Border to Lonzo Avenue and were placed back on Alert
 - Alert for Sumas Prairie including the area bordered by Sumas Mountain, Delair Road and Old Yale Road to the North; the US border to the south; Chilliwack City border to the east; and the Ridge West of Railway Road to the west (300-500 homes)
 - Total numbers of homes on orders are still to be determined.
 - 8 Evacuation Alerts Issued
 - Sumas Prairie: The Southern Rail Line to the West, Whatcom Road to the East, Highway 1 to the North, United States Border to the South (1700 Homes).
 - for Matsqui Village: Grace Road North to the Matsqui Slough (12 Homes).
 - Clayburn Area: Clayburn Village and surrounding area (30 Homes).
 - Eagle Mountain Areas: Cranberry Court, Briarwood Place, Doneagle Place (12 - 15 Homes).
 - Ten Oaks: Mount Blanchard Court, Mount Blanchard Drive and Old Clayburn Road (30 Homes).
 - Sumas Prairie: Westside of Whatcom Road, East of Huntington Village, Southside of Vye Road; Westside of Sumas Way to West of Riverside Road, East of Sumas River Dike to Boundary Road (140 Homes).
- Bowen Island
 - EOC activated due to flooding
- City of Chilliwack
 - 1 Alert for Yarrow, from Boundary Road to Browne Road, and from the Vedder River to Majuba Hill Road.

- 4 Orders, Yarrow, from Boundary Road to Browne Road, and all Majuba Hill and 4 properties on Yale Road and 3 properties on Chartwell Drive. Added Nov 17, one property on Yale road and one on Old Orchard Road.
- Coquitlam
 - EOC activated to coordinate provision of support, equipment and staffing for other communities.
 - No uncontrolled flooding or other emergency conditions in Coquitlam
 - Specialized rescue services (Coquitlam Fire Rescue) and/or EOC/ESS trained staff available to support other communities if needed.
- Delta - EOC Activated in response to issues related to flooding and high winds
- Fraser Valley Regional District
 - State of Local Emergency Declared
 - 1 Alert for Chilliwack River Valley, FVRD Electoral Area "E" for 7 properties on O'Byrne Road.
 - 5 Orders:
 - FVRD EA "B" for 3 properties on Fish Camp Road and 5 properties on Othello Road.
 - FVRD EA "D" for 1 property on Bridal Falls Road (24 people).
 - FVRD EA "E" for 4 properties on Auchenway Road.
 - FVRD EA "E" for 13 properties on Chilliwack Lake Road and 8 properties on Wilson Road.
 - FVRD EA "H" for 17 properties on Lakeshore Drive.
- Village of Harrison Hot Springs – EOC activated due to flooding in the Miami Slough.
- District of Hope
 - Access from all Highways (1,3,5) cut off.
 - Significant power outages for much of the day (w/hospital on generator)
 - Currently no food in town due to no power. Stores/restaurants closed.
 - Meal flown in via helicopter 2021NOV16 and provided by Salvation Army.
 - Food and cot delivery continued today.
- District of Kent
 - 1 Orders for Rockwell Drive, Rockwell Lane, Rockwell Place, Pirates Lane, Thunderbird Crescent, and Dogwood Lane (6 homes).
 - All properties on Rockwell Drive corridor have been placed on Evacuation Order.
 - Approximately 275 people rescued from Highway 7 on Nov. 15
 - Crews are working to make access through the slide area
- City of Langley – EOC activated
 - Rainfall caused widespread flooding on public and private property, as well as parks and trails, and sewer lift stations.
 - Multiple roads impacted due to flooding.
- Maple Ridge- EOC activated
 - The Fraser River levels continue to drop, and the Sanitary Sewer Overflow (SSO) event will transition from an EOC event to an operational response.
- Metro Vancouver- EOC activated
- Mission - EOC activated
 - 1 order issued for 8 properties located on the 8400 block of Bembow Street in Hatzic (8 properties).
- New Westminster – EOC standing down.

- Pemberton – EOC activated.
 - The neighbourhoods of the Peaks, Pioneer Junction, the Trailer Park on Hwy 99, the Industrial Park and One Mile Lake area have all have experienced substantial flooding.
 - A sandbag station has been set up at Municipal Hall.
- Pitt Meadows
 - Determining flood spill conditions and possible scenarios from the Alouette Dam
 - Notification to some properties along the Alouette/Pitt Rivers.
- Port Coquitlam - EOC activated.
- Squamish Lillooet Regional District – EOC activated.
 - The continued closure of the Duffy Lake Road / Hwy 99 and other closures are constraining access around the regional district, and there are a number of stranded travellers in the S2S member municipalities who are unable to get home currently.
- Sunshine Coast Regional District – EOC activated.
 - Stormwater flooding and erosion has impacted public services (drinking water, fire flows, roads, transit, wastewater treatment, parks) in 35+ locations, regionally. Fortis reports exposed gas line at Stephens Road and Lower Road and are preparing for re-routing and/or shutoff.
- Surrey – EOC Activated.
- Vancouver
 - EOC activated for flooding

VANCOUVER ISLAND AND CENTRAL COAST REGION (VIC)

VIC PREOC activated today in response to flooding.

KEY VIR REGIONAL INFORMATION

Total Active Alerts: 1

Total Orders: 1

Total States of Local Emergency: 1

Total Band Council Resolutions: 0

FIRST NATIONS

- Halalt First Nation:
 - 150 evacuees, Flooding for 30 homes due to a watermain break and overland flooding. RDA for 2 homes requested, CVRD assisting.
- Snuneymuxw First Nation:
 - 25 evacuees (approximate), reviewing impacts to several septic tanks in the area.
- Penelakut First Nation:
 - 50 evacuees (approximate.)
- Cowichan Tribes:
 - 120 evacuees (approximate).
 - Evacuation order remains in place for Sahilton road, alerts remain in place for other areas impacted by the flood as river is still very high, with rain in the forecast.
- Pauquachin First Nation
 - Flooding event. Pumps likely needed.

LOCAL AUTHORITIES

- Cowichan Valley Regional District:
 - Major flooding event taking place in the Cowichan region due to heavy rainfall over the past 48 hours - Multiple road closures (incl. highway), restricting areas throughout the region, including within the boundaries of the Municipality of North Cowichan.
 - SOLE was issued at 1100 hrs on 2021-11-15 - 4 Evacuation Orders in effect - incl. CVRD, Cowichan Tribes, Halalt and Penelakut First Nations.
- Nanaimo Regional District:
 - States of Local Emergency in place.
 - 1 Evacuation Order remains, 2 orders rescinded: Nanaimo River and Cedar Grove/Riverside/Waters Road.
- Capital Regional District
 - EOC Activated. Highway 1 in both directions reduced to single, alternating route on Malahat. Some localized power outages throughout the CRD. Water service in Fulford Harbour area down for 21 households.
- District of Sooke
 - EOC Activated.
- District of Highlands
 - EOC Activated.
- City of Langford
 - EOC Activated.
 - 20+ properties on alert.
- Central Saanich
 - EOC activated
 - Localized flooding throughout the district. Supporting Public Works within the Brentwood Bay area, liaising with Saanich Peninsula Hospital with resources as needed and status update.

Key Internet Links:

Avalanche Canada Weather Forecast [Drying out at last \(avalanche.ca\)](https://www.avalanche.ca/)

Emergency Info BC

<https://www.emergencyinfobc.gov.bc.ca>

BC Hydro Outage Map <https://www.bchydro.com/power-outages/app/outage-map.html>

BC River Forecast Centre

<https://www2.gov.bc.ca/gov/content/environment/air-land-water/water/drought-flooding-dikes-dams/river-forecast-centre>

Drive BC

<https://www.drivebc.ca/mobile/events/index.html>

Information about Disaster Financial Assistance is available on the DFA web site at

<http://www.gov.bc.ca/disasterfinancialassistance>

APPROVED BY:

Brendan Ralfs
PECC Director

Note: This document may be distributed within your agency. Any distribution outside your agency requires prior approval from the PECC Director

Ministry of Forests, Lands, Natural Resource Operations and Rural Development

High Streamflow Advisory (DOWNGRADED) – Englishman River, Cowichan River, Koksilah River, Chemainus River

ENDED - Flood Watch – Southern Vancouver Island

ENDED- High Streamflow Advisory – West Vancouver Island, East Vancouver Island, Central Vancouver Island

UPDATE: 6:00 AM November 16, 2021

The River Forecast Centre is **downgrading to High Streamflow Advisories** for:

- **Chemainus River**
- **Englishman River**
- **Cowichan River**
- **Koksilah River**

The River Forecast Centre is **ending Flood Watches and High Streamflow Advisories** for:

- **South Vancouver Island (other tributaries)**
- **Central Vancouver Island including tributaries around Port Alberni**
- **West Vancouver Island**
- **East Vancouver Island**

Following a significant atmospheric river event, rainfall rates eased on Monday afternoon. River levels across Vancouver Island have reached their peak levels from this event, and rivers have receded overnight. River flows remain high in some areas. With drier weather on Tuesday, ongoing recession of river levels is expected.

The public is advised to stay clear of the fast-flowing rivers and potentially unstable riverbanks during the high-streamflow period.

The [River Forecast Centre](#) continues to monitor the conditions and will provide updates as conditions warrant.

BC River Forecast Centre

Ministry of Forests, Lands, Natural Resource Operations and Rural Development

Ministry of Forests, Lands, Natural Resource Operations and Rural Development

A **High Streamflow Advisory** means that river levels are rising or expected to rise rapidly, but that no major flooding is expected. Minor flooding in low-lying areas is possible.

A **Flood Watch** means that river levels are rising and will approach or may exceed bankfull. Flooding of areas adjacent to affected rivers may occur.

A **Flood Warning** means that river levels have exceeded bankfull or will exceed bankfull imminently, and that flooding of areas adjacent to the rivers affected will result.

Ministry of Forests, Lands, Natural Resource Operations and Rural Development

Flood Warning – Sumas

Flood Watch –Fraser Valley, Fraser Canyon

High Streamflow Advisory – Coquihalla River (DOWNGRADED), Chilliwack River (DOWNGRADED)

ENDED – Flood Watch Sea-to-Sky, North Shore, Howe Sound

ENDED - High Streamflow Advisory – South Coast

UPDATE: 7:45AM November 16, 2021

As of 7:45 am November 16th, the River Forecast Centre is maintaining the following advisories:

- **Sumas River and areas around the US Border – Flood Warning (MAINTAINED)**
- **Fraser Valley including surrounding tributaries – Flood Watch (MAINTAINED)**
- **Fraser Canyon tributaries, including tributaries around Hope – Flood Watch (MAINTAINED)**
- **Coquihalla River – High Streamflow Advisory (DOWNGRADED)**
- **Chilliwack River – High Streamflow Advisory (DOWNGRADED)**

The River Forecast Centre is **ending** a **Flood Watches and High Streamflow Advisories** for:

- **Sea-to-Sky - ENDED**
- **Howe Sound - ENDED**
- **North Shore Mountains - ENDED**
- **Sunshine Coast - ENDED**
- **Metro Vancouver - ENDED**

The atmospheric river that impacted southern British Columbia over the weekend and Monday has now moved out of the region. Rainfall tapered off on Monday afternoon, with limited precipitation observed over the past 12 hours. Throughout the region river levels have reached their peak levels and have receded overnight Monday and early on Tuesday. Flows and water

Ministry of Forests, Lands, Natural Resource Operations and Rural Development

levels remain high in lake and reservoir-fed watersheds along the Fraser Valley, including the Allouette River and Harrison River. Low-lying terrain around the Sumas River drainage are also expected to have persistent high-water.

Generally dry conditions are expected over the next few days. River levels are expected to continue to recede on Tuesday and through the week.

The public is advised to stay clear of the fast-flowing rivers and potentially unstable riverbanks during the high-streamflow period.

Details of the COFFEE and CLEVER Model forecasts can be found at:

http://bcrfc.env.gov.bc.ca/fallfloods/map_coffee.html, and

http://bcrfc.env.gov.bc.ca/freshet/map_clever.html

The River Forecast Centre continues to monitor the conditions and will provide updates as conditions warrant.

BC River Forecast Centre

Ministry of Forests, Lands, Natural Resource Operations and Rural Development

A **High Streamflow Advisory** means that river levels are rising or expected to rise rapidly, but that no major flooding is expected. Minor flooding in low-lying areas is possible.

A **Flood Watch** means that river levels are rising and will approach or may exceed bankfull. Flooding of areas adjacent to affected rivers may occur.

A **Flood Warning** means that river levels have exceeded bankfull or will exceed bankfull imminently, and that flooding of areas adjacent to the rivers affected will result.

Ministry of Forests, Lands, Natural Resource Operations and Rural Development

MAINTAINED – Flood Warning – Lower Nicola River, Coldwater River

DOWNGRADED – High Streamflow Advisory – Similkameen River, Tulameen River,

UPDATED: 15:30 PM November 16, 2021

The River Forecast Centre is **maintaining Flood Warnings** for:

- **Lower Nicola River**
- **Coldwater River**

The River Forecast Centre is **downgrading Flood Warnings to High Streamflow Advisories** for:

- **Similkameen River**
- **Tulameen River and tributaries**

A significant atmospheric river made landfall across southern coastal regions of British Columbia Saturday into Monday, bringing observed rainfall amounts across the Coquihalla, upper Coldwater and Tulameen River watersheds of up to 250 mm of rain at high elevations. The warmth of this system meant that precipitation fell as rain at most all elevations. Snowmelt at low to mid elevations added to the incredible amount of rain that fell, augmenting the unprecedented flows recorded through this event. A drop to near normal temperatures on Monday, Nov 15th resulted in a shift from rain to snow for the region; such snowfall will taper off into Tuesday evening (Nov 16th). This shift resulted in the recession of streams within the Tulameen and Similkameen watersheds. However, many of the Water Survey of Canada gauges within the Coldwater and Nicola watersheds have been impacted by historic flows and are not reporting data; modeling as well as limited available data indicate the potential that flows remain high within both watersheds.

- Coldwater River at Merritt (08LG010) is at 2.459 m gauge height (114 m³/s) and is receding. The downstream Coldwater River near Brookmere (08LG048) gage is not currently returning data.
- Tulameen River at Princeton (Water Survey of Canada gauge 08NL024) is flowing at 259 m³/s (2-5 year return period) and is receding.

Ministry of Forests, Lands, Natural Resource Operations and Rural Development

- Similkameen River at Hedley (08NL038) is flowing at 480 m³/s (2-5 year return period) and is receding.

The short-term forecast indicates near seasonal temperatures and limited precipitation that will facilitate continued recession of streams in the region.

The public is advised to stay clear of the fast-flowing rivers and potentially unstable riverbanks during the high-streamflow period.

The River Forecast Centre continues to monitor the conditions and will provide updates as conditions warrant.

BC River Forecast Centre

Ministry of Forests, Lands, Natural Resource Operations and Rural Development

A **High Streamflow Advisory** means that river levels are rising or expected to rise rapidly, but that no major flooding is expected. Minor flooding in low-lying areas is possible.

A **Flood Watch** means that river levels are rising and will approach or may exceed bankfull. Flooding of areas adjacent to affected rivers may occur.

A **Flood Warning** means that river levels have exceeded bankfull or will exceed bankfull imminently, and that flooding of areas adjacent to the rivers affected will result.