

## FW: Meeting materials for joint meeting with MSKC, MMD, MSR March 31, 1:30-2:15pm

---

**From:** Ma, Tiffany J FIN:EX <Tiffany.Ma@gov.bc.ca>  
**To:** Ringma, Shalegh FIN:EX  
**Sent:** July 16, 2021 5:41:14 PM PDT  
**Attachments:** image001.jpg, image002.png, ChildCare\_MSR.March31.FINALMSKC.pptx

---

**From:** O'Connor, Lara FIN:EX <Lara.OConnor@gov.bc.ca>  
**Sent:** March 30, 2021 7:12 AM  
**To:** Ringma, Shalegh FIN:EX <Shalegh.Ringma@gov.bc.ca>  
**Cc:** Ma, Tiffany J FIN:EX <Tiffany.Ma@gov.bc.ca>  
**Subject:** FW: Meeting materials for joint meeting with MSKC, MMD, MSR March 31, 1:30-2:15pm  
Materials for Wednesdays 1:30 meeting.  
**Lara O'Connor**  
Senior Executive Assistant  
Office of the Deputy Minister | Ministry of Finance  
617 Government Street | Victoria, BC | V8W 9V1



Where ideas work

---

**From:** White, Christine FIN:EX <Christine.White@gov.bc.ca>  
**Sent:** March 29, 2021 7:21 PM  
**To:** Lawson, Liam FIN:EX <Liam.Lawson@gov.bc.ca>; Ashbourne, Jade FIN:EX <Jade.Ashbourne@gov.bc.ca>; O'Connor, Lara FIN:EX <Lara.OConnor@gov.bc.ca>; Michell, Jennifer FIN:EX <Jennifer.Michell@gov.bc.ca>  
**Subject:** FW: Meeting materials for joint meeting with MSKC, MMD, MSR March 31, 1:30-2:15pm  
FYI\*\*

**Christine White**  
Administrative Coordinator to the  
Honourable Selina Robinson  
Minister of Finance  
Room 153 Parliament Buildings  
Cell: 250.812.8894 | Office: 778.974.6045



Please consider the environment before printing this email.

---

**From:** Wilson, Cherie MCF:EX <Cherie.Wilson@gov.bc.ca>  
**Sent:** March 29, 2021 5:49 PM  
**To:** White, Christine FIN:EX <Christine.White@gov.bc.ca>  
**Subject:** Meeting materials for joint meeting with MSKC, MMD, MSR March 31, 1:30-2:15pm  
Hi Christine,

Attached are materials for our meeting on Wednesday. Let me know if you have any questions. ☺  
Sincerely,

**Cherie Wilson** | Sr. Administrative Assistant to  
The Honourable Katrina Chen | Minister of State for Child Care  
Rm 028 Parliament Buildings | Victoria, British Columbia | V8W 9E2  
**Main:** 250-356-5781 | **Direct:** 250-883-0518 | **E:** Cherie.Wilson@gov.bc.ca

\*\* In British Columbia, the Office of the Registrar of Lobbyists is responsible for monitoring and enforcing compliance with the Lobbyists Registration Act. To ensure that you are in compliance with the registration requirements for lobbyists under the Act please contact the Office of the Registrar of Lobbyists at: <https://www.lobbyistsregistrar.bc.ca/> \*\*

\*\*Please note: This email message, including attachments, is intended for the addressee(s) only and may contain legally privileged information. Any unauthorized use, distribution, disclosure or reproduction is strictly prohibited. If you have received this email in error, please notify sender by return email and delete all copies. \*\*



# Child Care Overview

## Minister Robinson

1

CC is an important enabler to the a robust and stable economy – but perhaps equally as important is that research also has shown that Early Learning is a key enabler to improve educational and life outcomes which is linked to reduced social and income inequities – and as such, the work within the CC Division also supports the Ministry’s focus on family preservation and prevention.

The *Early Years Study 4: Thriving Kids, Thriving Society*, released in February 2020, explains the social, economic, and developmental benefits to making early childhood education (ECE) an entitlement for all young children as a first tier of a comprehensive, publicly funded education system. The *Early Years Study 4* supports a universal early learning and care system and outlines many benefits for children, families and communities.

governments in Canada to offer early education to all preschool-aged (age 3-5) children, moving away from a “child-minding or care service”. Quality ECE requires a focus on ensuring equitable access for all families and a qualified, resourced workforce.

**Universal Provision-** A quality, universal ECE system reduces economic and social inequalities when available for all children and families.

**Strong Public Infrastructure-** The governance and oversight of ECE should be located within



education departments or ministries to support the continuum of learning. The department needs resources to ensure the ECE workforce is compensated and supported to deliver high quality programming.

Significant economic benefits come from investing in the ECE sector, with economists reporting a \$6 economic return for every \$1 investment in ECE. With increased investment in early learning, Canada reaps the benefits from improved female labour force participation, reduced inequality, better social integration of marginalized groups and improved educational outcomes for children. When parents are working and their children in early education, family incomes rise, and the tax revenues can contribute to universal, high quality ECE for all children.



## Overview:

### Child Care Division

Under Budget 2018 – Child Care BC was launched with an initial 1.3B investment over 3 years across three pillars:

- Affordability
- Accessibility
- Quality

Under the Min of State for Childcare – the CC division is the government lead for Childcare BC

Core Areas of Business:

- Funding for child care providers and parents
- Funding for early childhood educators
- Funding to create new child care spaces
- Child care resource and referral supports for parents and operators
- Regulation of Early Childhood Educators (ECE Registry)

2



## Overview:

### Cross-Government Responsibilities

- MCFD
  - Funding for child care operators and parents using child care
  - Regulation of Early Child Care Educators
  - Government lead on child care initiatives
- EDUC
  - Legislation to enable child care and before/after school care on school grounds
  - Early learning framework
  - Professional learning networks/seamless day pilots
- MOH
  - Licensing, inspection and investigations of child care facilities, carried out by regional health authorities
- AEST
  - ECE training programs in public and private post-secondary institutions
- Federal
  - \$52M annually under the Early Learning and Child Care Agreement
  - Throne Speech commitment to a sustained, long-term investment

3

CC is often described as a fragmented system – this is the case externally in the sector – but also internally, within government.

While Child care is primarily under the mandate of MCFD, there are areas of accountability across several other Ministries :

ELCC – 52.4M/155M over 3 years

- Sept 2020, sign 1 year extension for \$54.2M for the 20/21 year
- ELCC ends March 2021; s.13; s.16  
s.13; s.16

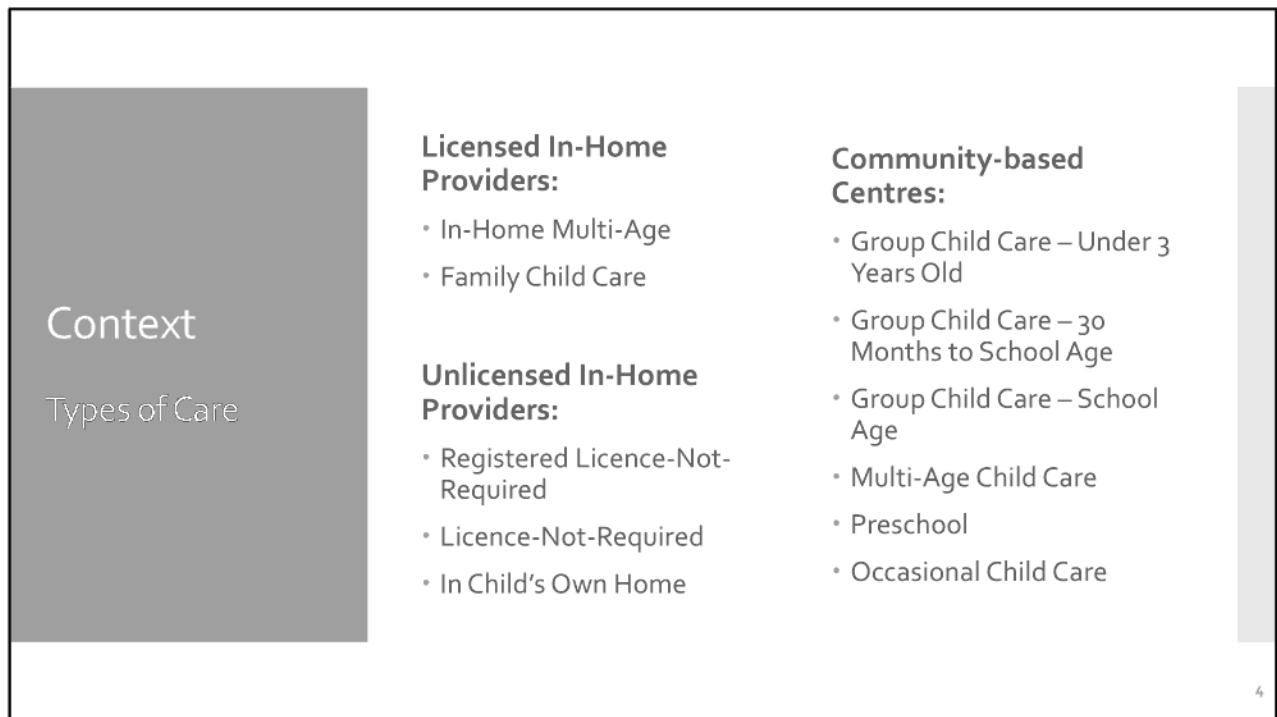
s.13; s.16

-

Fed. Min. Hussen's mandate letter

- 250K B/A school spaces for under 10
- Lower the B/A school fees by 10%
- Lower the cost of ECE training

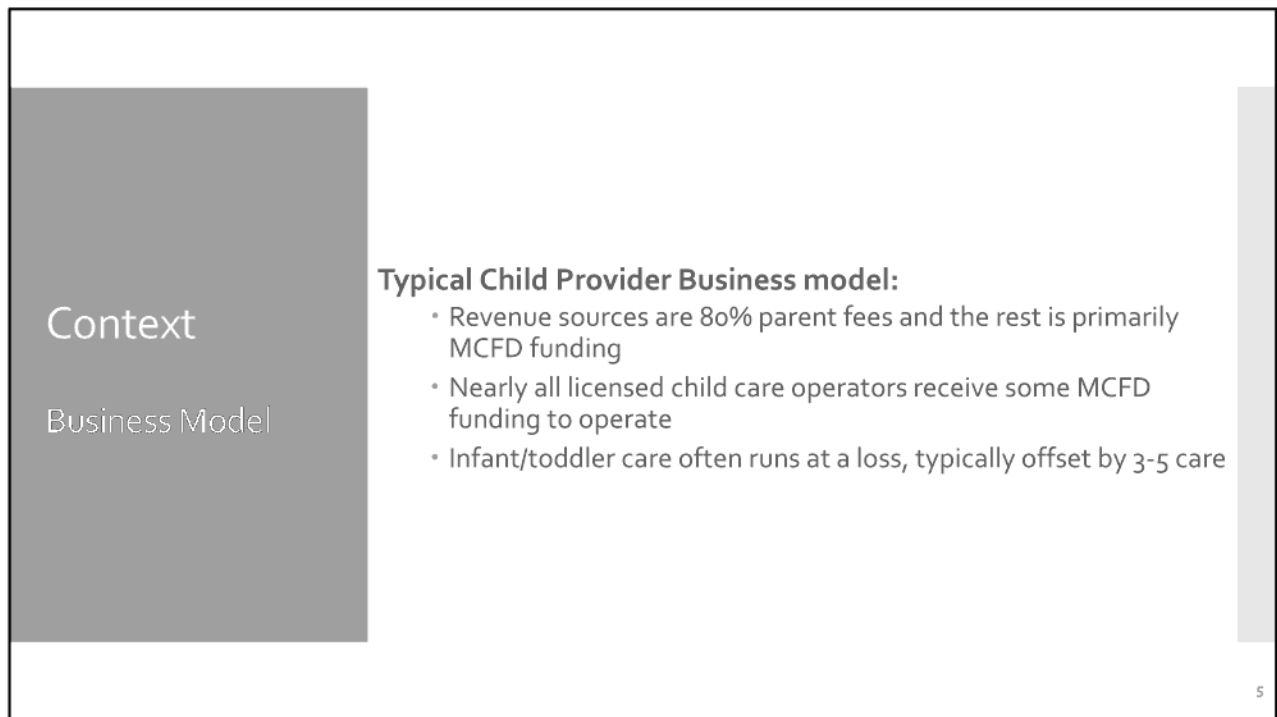




**Types of child care:**

- Home-based or centre-based
- Private or non-profit
- Licensed or unlicensed
  - Unlicensed care is allowed for care of up to two children or a sibling group
  - Licensed must follow Child Care Licensing Regulation, staff-child ratios, staff education, group size, etc.





As noted, child care is a fragmented model with a variety of licenced and unlicensed spaces.

Government funded, licenced child care is available for only about 20% of children in BC up to age 12

Nearly 4,000 child care licensed organizations funded by MCFD, comprised of over 5,000 facilities across the province

About two thirds (65%) of child care facilities are group providers, either for profit (37%) or non-profit (28%)

About one third (35%) are family providers

In the previous year, 940 facilities operated on school grounds. These facilities provided over 36,000 spaces, and 19,700 of these spaces were for out of school care.





Childcare BC  
Vision

"Affordable, quality  
child care is available for  
every family who wants  
or needs it."

The Childcare BC Plan launched in February 2018, as a \$2-billion investment to deliver quality, affordable child care to all families in B.C., making it the most significant child care investment in B.C.'s history.

It includes new and expanded funding programs to improve affordability for families, access to thousands of new inclusive, culturally appropriate spaces for all children, and addresses the workforce shortage through more educational opportunities and better pay for educators.

The goal of the 10-year plan is to provide universal child care to every family in British Columbia that wants or needs it, while strengthening our approach to reconciliation, prevention, early intervention, and family preservation.

- Inclusive and accessible
- Culturally-based
- Care when and where families need it
- Care built together, in partnership
- Care built for long term
- Safe and accountable



-Early learning and education



## Challenges & Programs

### Affordability

## **Key Affordability Issue:** High parent fees, especially for children under age 5

80% of operators revenue sources comes from parent fees

7

Under the Affordability Pillar, the key issue is high parent fees especially for children under age 5 and these high fees are seen in both group and family facilities across BC.

### Programs



Challenges &  
Programs

Access

**Key Access Issue:**  
Insufficient number of  
spaces

s.13

8



Challenges &  
Programs

Quality

## **Key Quality Issue:** Labour shortage of ECEs and other qualified staff

s.13

s.13

9

In 2019, ECEs working in licensed child care became eligible for a wage enhancement of \$1/hour, which increased to \$2/hour in April 2020. Over \$51-million has been invested to provide more than 13,000 ECEs with a wage enhancement.

Median ECE wage in funded child care centres has increased 9% from \$18.39 per hour to \$21.00 per hour (2017/18 to 2019/20); , a 14% increase



Challenges & Programs

Indigenous-led child care

## Continuing need for Indigenous-led child care

Indigenous peoples have the inherent right as confirmed in law to lead the development of their own child care framework.

As we develop our universal child care system, we will need to work in parallel with First Nations and rights holders

10

## **Aboriginal Head Start Programs:**

Culturally-based inclusive child care and early learning, family bonding and prevention services at no cost to families  
Over 30 communities benefiting from more than 600 new spaces  
\$40M invested over four years to expand these programs

## **Métis Navigator Positions**

To develop and deliver programs that meet



the unique needs of Indigenous children and families

11 new positions

\$3.6M invested

Aboriginal Head Start programs provide culturally based, inclusive child care and early learning, family bonding and prevention services at no cost to families. The province invested \$40-million over four years to expand these programs, with more than 30 communities benefiting from more than 600 new spaces.

To support new early learning and child care planning and Métis navigator positions, \$3.6-million is helping Indigenous early years and child care providers develop and deliver programming that meets the unique needs of Indigenous (First Nations, Métis, and Inuit) children and families.

Among other duties, navigators will:

- help families connect with culturally inclusive child care and early years services;
- enhance existing supports and programs within the community; and
- identify opportunities to leverage existing resources.

Planners will work with communities to plan for and meet child care needs. For example, a planner could:

- work with a community to develop a child care needs assessment;
- navigate the child care licensing process;
- work with child care providers to help them apply for government funding, e.g., through the Childcare BC New Spaces Fund; or
- work with a child care operator to review programming to make sure the programming reflects cultural practices.



## Challenges & Programs

### Inclusion

## Lack of support for children with extra support needs in child care settings

Over 100 SCD contracts and 50 ASCD programs throughout B.C.  
\$40M invested over four years

s.13

11



## Challenges & Programs

### Sector Coordination and Community Planning

#### Sector Representation

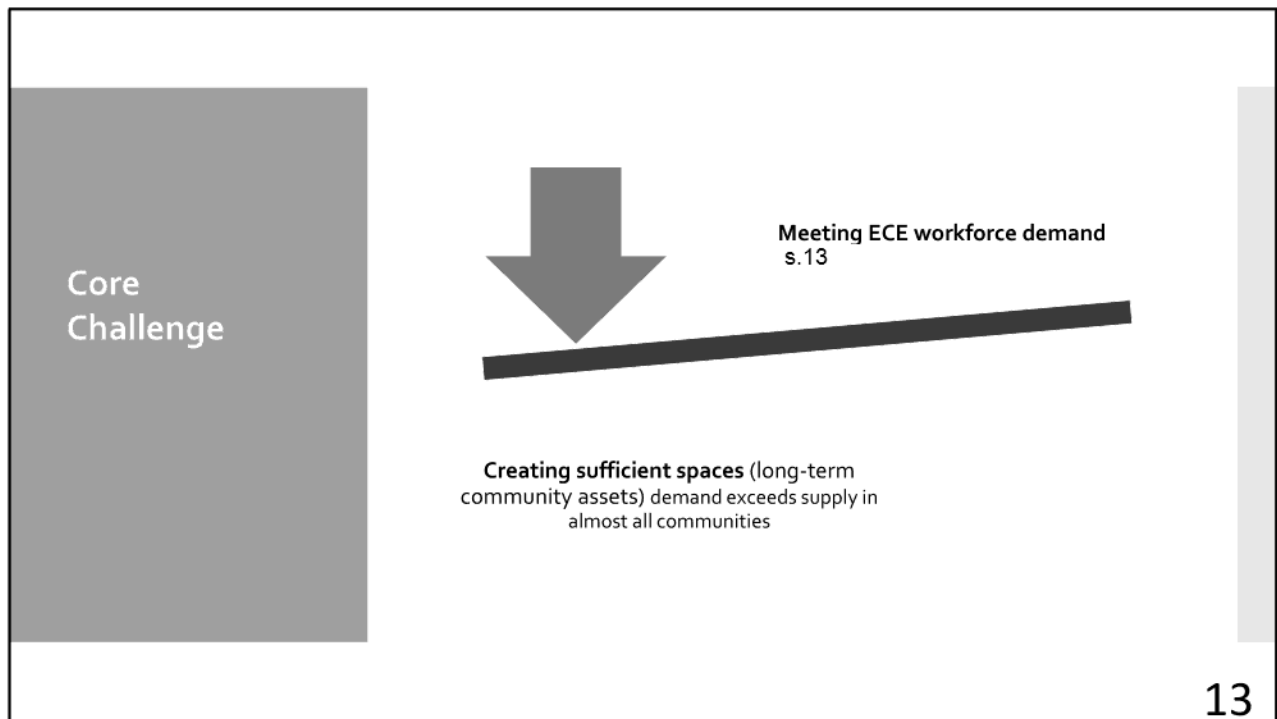
- ECE BC – voice for Early Childhood Educators
- Lack of sector voice for child care providers – multiple small organizations
- Expanding the discussion to include Education's partners and stakeholders (unionized workers) creates more complexity to navigate as we develop next 3 year plan

#### Community Planning

- Supported through planning grants from UBCM (funded by ELCC Agreement)
- **s.13**
- Space creation is application driven

12





- Childcare BC is a system change – requiring that we move forward on all aspects of plan in tandem.
- If we focus only on affordability, we will meet the needs of parents who already have child care, but create longer wait lists by increasing demand for the limited spaces available.
- If we focus on expanding spaces, we will not have the workforce to deliver child care services.
- And as we build out the system, we need to fund more Indigenous-led child care and enhance accessibility of care for children with extra support needs.

• s.13

- In context – we now have roughly 124,000 licensed child care spaces across the province at over 5,000 individual facilities.



•  
Affordability (helped parents save up to 1600 per month)

- CCOF: provides base operating funding to 124,000 licenced CC providers
- ACCB: income tested; families earning 111K or less received funding to offset child care fees. (53,000 families receiving this benefit)
- CCFRI: parents at approved licensed facilities; monthly funding for operators to support reduced parent fees by up to 350 per month. 62,000 spaces approved for a fee reduction.
- UCC Prototype Program: 51/52 sites and 2500 spaces pay no more than \$200 per month/10 per day. This is funded via our agree with GoC (ELCC agreement)

Access:

- New Spaces Fund – support governments commitment to create over 22,000 spaces in 3 years (3M public sector, 1.5M Non Profit; 250K for profit)
- Start up Grants (support unlicensed providers to become licensed)

Quality:

- Recruitment and Retention of ECEs - ECE Registry certifies or renews 800 ECEs per month
- Wage Enhancement; up 20 \$2m per hour over 2 years
- Bursary Program



## Current Priorities

Focus for Year 4

**Collaboratively develop a strategy to move child care delivery to Ministry of Education:**

- s.12; s.13

- 

- 

s.13

- Affordability

- Expand \$10/Prototype Sites by 75 new sites

- Quality

- Expand ECE Wage Enhancement by \$2/per hour

- ECE training / seat expansion

- Accessibility

- Continue with space creation s.13

- Expand supported child development funding and with increase of 2000 children served

- Expand Aboriginal Head Start spaces

s.13

14

**Mandate letters:** offer clarity and direction to continue to implement CCBC Plan and govt's 10 yr plan towards universal child care strategy and transition to Education

Continue to ensure the delivery of safe, quality child care through the COVID-19 pandemic and recovery.

**Enshrine the concept of universal child care in legislation** to protect the principles of affordable, accessible, inclusive and quality child care. <Protect in Law)

Continue to implement Childcare BC, our **government's ten-year plan to provide universal, affordable, accessible, quality and inclusive child care to every family that wants or needs it, with the goal of no family paying more than \$10 a day for licensed childcare when fully implemented**

**Continue to improve the affordability of child care, including by working closely with the federal government to expand the number of \$10 a day child care spaces across British Columbia.**

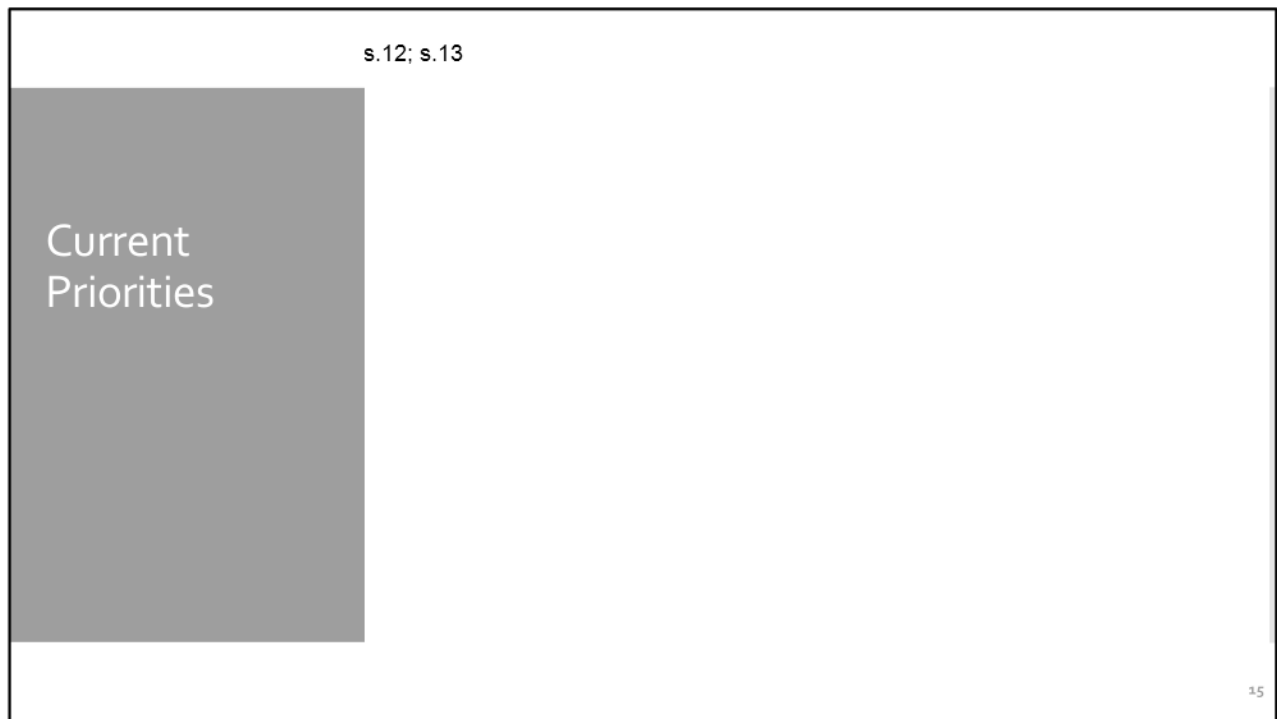
s.13



With support from the Minister of Education and Minister of Children and Family Development, lead work toward **providing universal access to before and after school care, prioritizing care on school grounds so parents know their children are safe at one place for the full work day.**

With support from the Minister of Finance and the Minister of Advanced Education and Skills Training, lead work to implement and enhance the **Early Care and Learning Recruitment and Retention Strategy, including expanding our successful ECE wage enhancement program to ensure that Early Childhood Educators are a well-supported profession, just like other professionals who work in B.C.'s education system.**





1. s.12; s.13

2.



Background  
Slides

16



## Challenges & Programs

### Affordability Programs

#### Child Care Operating Funding:

- Provides base operating funding to licenced providers
- Currently 131,137 spaces in 5,339 facilities

#### Child Care Fee Reduction Initiative:

- Monthly funding for providers to reduce parent fees by up to \$350 per month
- 64,000 spaces currently approved for a fee reduction
- s.13



17



## Challenges & Programs

### Affordability Programs

#### **Affordable Child Care Benefit:**

- Income tested; families earning \$111K or less receive funding to offset child care fees
- Over 36,000 families currently receive the benefit
- \$267.3M invested in 2020/21

#### **Universal Child Care Prototype Sites:**

- Parents pay no more than \$200 per month or \$10 per day
- Over 50 sites and 2500 spaces
- \$31M funded in 2020/21 through federal ELCC agreement

18



## Challenges and Problems

### Access

#### Population

- 2020 total child population: **936,167**
- Estimated 0-12 population: **620,000**
- Estimated children needing care: **s.13**

#### Child Care Providers

- Average monthly licensed child care spaces funded: **123,929**
- Total licensed facilities funded: **5,032**

Government funded, licensed child care is available for only **20% of children** in B.C. up to age 12.

19

We know that there are 936,167 children ages 0-18 in BC, so we can estimate there are about 620,000 kids 0-12.

s.13

This means government funded, licenced child care is available for only about 20% of children in BC up to age 12.

Nearly 4,000 child care licensed organizations funded by MCFD, comprised of over 5,000 facilities across the province

As noted, child care is a fragmented model with a variety of licenced and unlicensed spaces.

Government funded, licenced child care is available for only about 20% of children in BC up to age 12



Nearly 4,000 child care licensed organizations funded by MCFD, comprised of over 5,000 facilities across the province

About two thirds (65%) of child care facilities are group providers, either for profit (37%) or non-profit (28%)

About one third (35%) are family providers

In the previous year, 940 facilities operated on school grounds. These facilities provided over 36,000 spaces, and 19,700 of these spaces were for out of school care.

s.13



## Challenges & Programs

### Access Programs

#### New Spaces Fund:

- Grant program to create new licensed child care facilities, prioritizing public and non-profit partnerships
- To date, has approved 15,711 spaces

#### Start up Grants:

- Supports unlicensed providers to become licensed
- To date, has approved 3,880 spaces

#### Maintenance Fund:

- Supports licensed facilities in emergency circumstances, that directly impact children's health and safety or may result in immediate facility closure
- 1,686 applicants have been approved for funding over the last three years
- All three programs total an \$85.4M investment in 2020/21
- More than 20,000 new spaces funded since 2018

20

New Spaces Fund has approved 13,664 spaces, Start-up has approved 3,880 spaces  
- UBCM Space creation?

Access:

- New Spaces Fund – support governments commitment to create over 22,000 spaces in 3 years (3M public sector, 1.5M Non Profit; 250K for profit)
- Start up Grants (support unlicensed providers to become licensed)

- *On track to meet target of 22,000 spaces by March 2021*
- *Just under 6000 of the 21,000 spaces approved under the NSF are now operational*



## Challenges & Programs

### Quality

#### **Recruitment and Retention of ECEs:**

- ECE Registry is the regulatory body for ECEs
- Certifies or renews 800 ECEs per month

#### **ECE Wage Enhancement:**

- A wage top-up for front-line ECEs working in licensed facilities
- 1\$/hour in 2019, increased to \$2/hour in 2020
- Over \$51M invested to support over 13,000 ECEs

21

The ECE Registry is the oversight body for all ECEs in B.C. They maintain records of certification and renewals and conduct all investigations of complaints.

CCBC has made significant investments to improve supports for early care and learning professionals:



## Challenges & Programs

### Quality

#### **Bursary Program:**

- To increase the number of students entering, re-establishing and graduating from recognized ECE post-secondary programs
- 8000 bursaries and workforce-development supports provided to students
- \$16M investment

#### **Education Seats:**

- To help meet the growing need for ECEs
- An additional 895 ECE student seats at post secondary institutions
- \$7.4-million by AEST over the past three years

22

An investment of approximately \$16-million, through ELCC, to provide 8,000 bursaries and workforce-development supports for students pursuing a career in early childhood education.

To increase the number of ECEs, AEST has invested \$7.4-million over the past three years to fund an additional 895 ECE student seats at public post-secondary institutions.



## Challenges & Programs

### Indigenous-led Child Care



#### Aboriginal Head Start Programs:

- Culturally-based inclusive child care and early learning, family bonding and prevention services at no cost to families
- Over 30 communities benefiting from more than 600 new spaces
- \$40M invested over four years to expand these programs

#### Métis Navigator Positions

- To develop and deliver programs that meet the unique needs of Indigenous children and families
- 11 new positions
- \$3.6M invested

23

Aboriginal Head Start programs provide culturally based, inclusive child care and early learning, family bonding and prevention services at no cost to families. The province invested \$40-million over four years to expand these programs, with more than 30 communities benefiting from more than 600 new spaces.

To support new early learning and child care planning and Métis navigator positions, \$3.6-million is helping Indigenous early years and child care providers develop and deliver programming that meets the unique needs of Indigenous (First Nations, Métis, and Inuit) children and families.

Among other duties, navigators will:

- help families connect with culturally inclusive child care and early years services;
- enhance existing supports and programs within the community; and
- identify opportunities to leverage existing resources.

Planners will work with communities to plan for and meet child care needs. For example, a planner could:

- work with a community to develop a child care needs assessment;
- navigate the child care licensing process;
- work with child care providers to help them apply for government funding, e.g., through the Childcare BC New Spaces Fund; or



work with a child care operator to review programming to make sure the programming reflects cultural practices.



## Challenges & Programs

### Inclusion

#### **Supported Child Development and Aboriginal Supported Child Development Programs:**

- Enables children who require extra supports to be included in child care settings
- Over 100 SCD contracts and 50 ASCD programs throughout B.C.
- \$40M invested over four years
- Waitlist for access to A/SCD programs is 1000's long



24

To make child care more inclusive for children with support needs, the province is investing \$40-million over four years into the Supported Child Development and Aboriginal Supported Child Development programs.