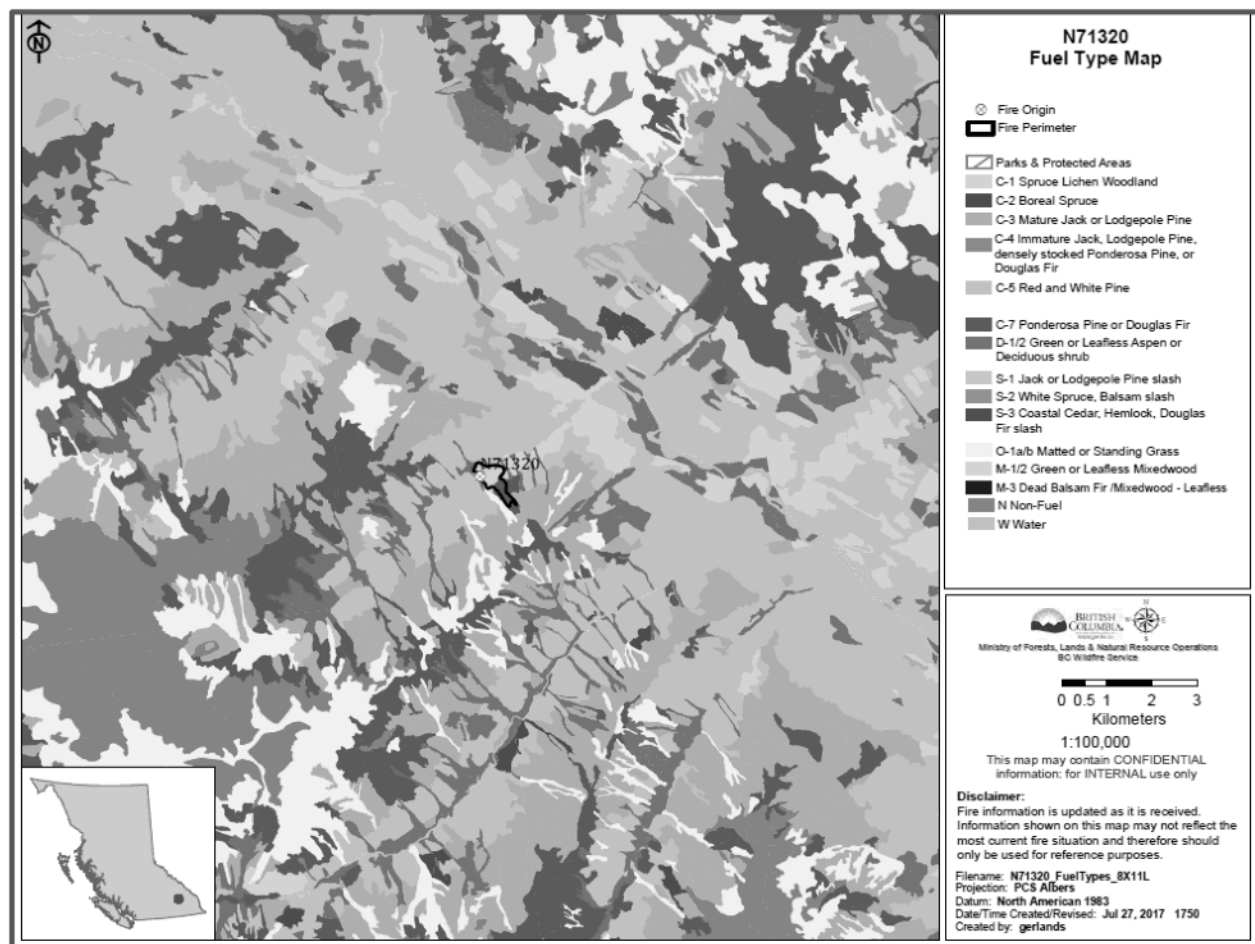


N71320 – Short Range Fire Growth Analysis using Prometheus Model

Starting Date	July 27, 2017 ; End date July 30 2359h		
Weather Station	Gold Hill, Elevation 800 m, 11 km SE of fire		
Starting Indices	Daily codes (7/27): FPMC 94 DMC 106 DC 476		
Starting size	7/27: 35 ha		
Ending size	7/28 @2300h: 563 ha	7/29: 1,316 ha	7/30: 2,206 ha

FBP Fuel Types – base map (Figure 1)



- **History and assumptions:**
 - The fire was discovered 0940h on 07/24 at 1ha, and was mapped at 35ha by 1500h on 07/27.
 - No action has been taken on this fire.
- **Vegetation, Fuel types and topography**
 - Terrain very steep (40-80% slopes) and continuously vegetated up to 2000m

Completed: July 27, 2017 2000 hrs
 Authors: Dan Thompson

- Current fire is burning along an E-W valley at on a north-facing slope between 1000 and 1700 m asl
- Higher fuel moisture on north-facing slopes is not represented in simulation
- Numerous avalanche paths ~200m wide and interspersed 1.5-2km apart are likely to significantly limit fire spread cross-slope, but are only partially represented in the fuels grid
- Douglas-fir, with beetle-kill impact and interspersed with cut blocks
 - Main fuel types (Figure 1) are is a cedar/hemlock/Douglas fir mix (C-5); high elevations are modelled as C-7 or O-1b; valley bottoms M-1/2 mixedwood.
- Fuel conditions are modeled for midsummer conditions:
 - Mixedwood in leafed-out (M-2) condition, grass standing (O-1b), 60% cured
- Weather
 - Starting indices (7/27): FFMFC 94 DMC 106 DC 476
 - Gold Hill station BCWS daily forecast used with elevation interpolation and cooling
 - Lawson FFMFC used for hourly weather indices (in the absence of rain, with no hourly station nearby)
 - Separate wind flow modelling not performed due to low forecast wind speeds and likely prevalence of erratic light winds caused by daytime differential heating

Daily	T	RH	WD	WS	Rn	FFMC	DMC	DC	ISI	BUI	FWI
7/27, 1700	28	30	201	4	0	94	106	476	10	136	36
7/28, 1700	31	20	340	6	0	95	112	485	12	142	40
7/29, 1700	32	19	160	7	0	96	118	495	13	148	44
7/30, 1700	32	23	160	8	0	96	125	504	14	154	46

- Fire Modeling Assumptions
 - Fire perimeter imported as ignition polygon
 - Burning conditions: restrict fire spread to 1200-2300, RH < 70%, and WS > 2
 - Simulation represents free-burning conditions (no suppression)
- Final output (Figure 2):
 - July 29: potential growth of ~500 ha predicted
 - Fire behaviour: ROS of mainly 2-4 m/min; IC 3-4
 - Linear total spread distance ~1km to the NNW and southerly, limited downhill spread
 - July 29: potential growth of ~750 ha predicted
 - Fire behaviour: ROS of mainly 2-4 m/min; IC 3-4
 - Linear total spread distance ~1km to the NNW and southerly, limited downhill spread
 - July 30: potential growth of 800 ha predicted (est. total 2,206 ha)
 - Fire behaviour: ROS of mainly 2-4 m/min; IC 3-4

- Linear total spread distance ~1km to the WNW and southerly uphill spread under low winds
- Overall
 - Given local hot and dry conditions on steep terrain, significant fire spread potential exists; local features such as cooler and wetter north-facing slopes and deciduous avalanche paths are very likely to limit actual spread to lower values than those modelled here. Comparison of actual spread to potential will provide guidance between today and the next 72 hours.
- Caution with Prometheus Fire Growth Model
 - Multi-day projections are particularly prone to error (errors from previous days are compounded on subsequent days)
 - Fire growth maps tend to portray 'near worst case' fire growth potential rather than average fire growth under similar conditions; fires may not achieve shape and size shown in simulations
 - Higher fuel moisture on north-facing slopes is not represented in simulation
 - Numerous avalanche paths ~200m wide and interspersed 1.5-2km apart are likely to significantly limit fire spread cross-slope, but are only partially represented in the fuels grid
 - Small increases of daytime wind speed compared to forecast light values (especially SW winds parallel to valley) could bring about significantly more downhill spread than forecast.
 - Nocturnal downslope winds (especially given presence of glacier or snowfield uphill) may also appear during cool nights, and are episodic and very hard to predict.

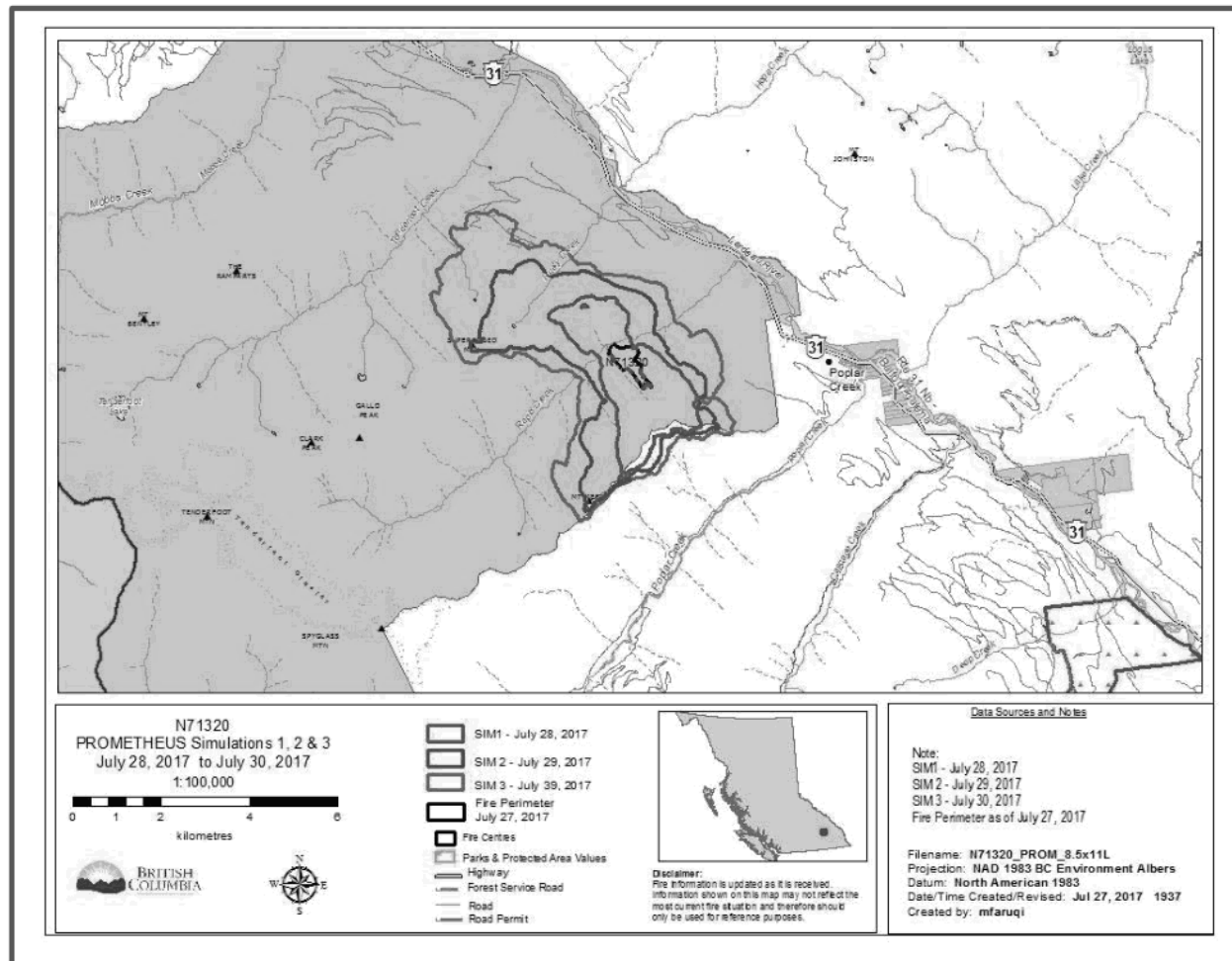
Modeler/Advanced Planner:

Dan Thompson

GIS Support:

s.22

Figure 2. Final spread map



Completed: July 27, 2017 2000 hrs
Authors: Dan Thompson

FIRE ANALYSIS

INCIDENT NO. N71320	DATE (YYYY-MM-DD) 2017-07-24	TIME (24HRS) 1300	CURRENT ESTIMATED SIZE 15 ha	ESTIMATED SIZE AT CONTROL 500 ha
LATITUDE 50° 25'	LONGITUDE 117° 12'	FIRE LOCATION (GEOGRAPHIC) Rapid Creek.		
FUEL TYPE / DESCRIPTION C4 - C 5				
WEATHER FORECAST FOR OR NEXT OPERATIONAL PERIOD (precipitation forecasted, drying trend, wind event, etc.)				
<p>Another very weak upper trough could clip just south of the central interior for cloudy periods and increased wind on Sunday. Otherwise the strong upper ridge of high pressure centred south of Idaho should build northward for mainly sunny and very warm conditions Saturday through Monday. The high temperatures should range from 28 to 32. The relative humidity should continue to drop into the teens each afternoon. Fair overnight recoveries should also persist. A weak upper trough (technically a cold front) will clip eastward across the area with cloudy periods, increased (becoming moderate) wind and the slight chance of a thunderstorm or light shower this afternoon and early evening. Otherwise a flat area of high pressure centred south of the border will maintain fairly sunny, dry and very warm conditions today, Friday and Saturday.</p>				
MAP ATTACHED <input checked="" type="checkbox"/> YES <input type="checkbox"/> NO FIRE BEHAVIOUR FORECAST ATTACHED <input checked="" type="checkbox"/> YES <input type="checkbox"/> NO				
LONG RANGE FIRE GROWTH PROJECTION REQUIRED <input checked="" type="checkbox"/> YES <input type="checkbox"/> NO Reason if No				
LONG RANGE FIRE GROWTH PROJECTION ATTACHED <input checked="" type="checkbox"/> YES <input type="checkbox"/> NO				
VALUES AT RISK: <input checked="" type="checkbox"/> Public Safety <input checked="" type="checkbox"/> Occupied Interface Area <input type="checkbox"/> Infrastructure/Assets - Private <input type="checkbox"/> Infrastructure -Public <input checked="" type="checkbox"/> High Environmental Values <input type="checkbox"/> High Socio Economic Values <input type="checkbox"/> Timber Resource <input type="checkbox"/> Recreation				
<input checked="" type="checkbox"/> Comments <p>The fire is burning in the Goat Range Park. The terrain is steep and primarily covered in old growth timber. Access is difficult at best and the s.13</p> <p>There are slide chutes to the east of the fire which should slow the progress of the fire advancing out of the drainage and towards the Lardeau River. Fire growth to the west, up the drainage is not a concern.</p>				
GENERAL CONTROL OBJECTIVES				
<p>Monitor only at this time. Engaging this target would require extensive resources. The location of the fire currently makes it inaccessible and unworkable.</p>				
STRATEGIES FOR THE INCIDENT				

FIRE ANALYSIS

The current strategy for the incident is to monitor only. We will utilize aircraft and personnel in the area to maintain a regular visual and update the zone and FC.

PROBABILITY OF MEETING OBJECTIVES

MEDIUM (HIGH, MEDIUM OR LOW)

ESTIMATED SUPPRESSION COSTS ^{s.17}

ESTIMATED DAILY COST TO CONTROL (from daily cost estimator ^{s.17}

ESTIMATED VALUES PROTECTED \$

AS PER LAND MANAGER

LAND MANAGER COMMENTS

BC Parks supports maintaining a modified response within Goat Range Park.

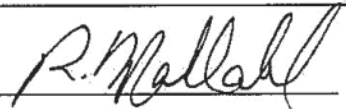
Leo DeGroot (Wildlife Biologist - Nelson) has been contacted for advice on the caribou habitat. He has no concerns with the wildfire response.

NAME Rob MacDonald - BC Parks

LAND OR FIRE MANAGEMENT PLAN OBJECTIVES ATTACHED:

☐ YES ☐ NO

SIGNATURE



OTHER AGENCY / STAKEHOLDER COMMENTS

NAME

LAND OR FIRE MANAGEMENT PLAN OBJECTIVES ATTACHED:

☐ YES ☐ NO

SIGNATURE

FIRE CENTRE REPRESENTATIVE COMMENTS



FIRE ANALYSIS

NAME _____

POSITION _____

SIGNATURE _____

CERTIFICATION LEVEL _____



FIRE ANALYSIS

INCIDENT COMMANDER SIGNATURE: Billy Stevens

APPROVED BY (FIRE CENTER MANAGER OR DESIGNATE) SIGNATURE:

SPECIFIC CONDITIONS (Provide specific conditions that would require a fire analysis update)

Costs exceed estimate.

Fire moves beyond assigned trigger points.

FIRE ANALYSIS

DETAILS ON ISSUES, CONSTRAINTS & VALUES AT RISK

Smoke Issues

Fire is burning in the Goat Range Park and is visible from the community of Poplar Creek. Pending wind direction the smoke may be issues if it moves into the main valley and drifts south to the head of Kootenay Lake.

Isolated Structure

There are a number of small summer cabins about 3.5 km down the valley at the base in Poplar Creek SE of the fire which are not a concern at this time.

Slope Stability

The area is very steep. Several slide chutes in the area are evident.

Responder Safety

Currently the fire is too steep for ground crews to work safely. The timber is very large in the fire area which could pose a risk to responders.

Wildlife

The FMP has identified this area as wildlife habitat for Caribou Priority 1.

2km Interface Buffer

The township of Poplar Creek is to the Southeast of the fire. Currently the fire is well outside the 2km buffer however as the fire continues to grow, this will be the value of concern if the it comes out of the Rapid Creek drainage.

OGMA



FIRE ANALYSIS

There is a lot of old growth timber in the fire area.



FIRE CONTROL OBJECTIVES, STRATEGY AND TACTICS OPTIONS

OPTION 'A'

OBJECTIVE:

Monitor Only

STRATEGY: Monitor Only. Utilize air patrols and a modest amount of aircraft time with an officer to perform recon missions every second day at a minimum. We will be utilizing these flights to update all of our MR fires in the zones so the cost will be dispersed over each incident.

TACTICS: No action. If the current trigger points are crossed, reassessment will be necessary.

PROBABILITY OF MEETING OBJECTIVES (HIGH, MEDIUM, LOW) 0

TOTAL VALUES AT RISK 'A' \$

ESTIMATED TOTAL SUPPRESSION COSTS 'A' \$ 17

OPTION 'B'

OBJECTIVE:

Modified Response

STRATEGY: Indirect Attack

TACTICS: To prevent fire growth to the east towards triggers points, we will construct a fuel break using heavy machinery from Poplar Creek FSR towards Rapid Creek. Once constructed, we will engage in burn out operations to keep the fire from backing towards Poplar Creek and keep it burning upslope into the rocks or the height of land. This will be a multi-day operation requiring trained Type 1 personnel, a task force of heavy equipment and significant rotary wing bucket support.

PROBABILITY OF MEETING OBJECTIVES (HIGH, MEDIUM, LOW) 0

TOTAL VALUES AT RISK 'B' \$

ESTIMATED TOTAL SUPPRESSION COSTS 'B' \$ 17

OPTION 'C'

OBJECTIVE: Full Suppression

STRATEGY: Parallel

TACTICS: We will need a Rappel crew to establish access. This could take 2-3 days. We would then insert two Unit Crews to build containment lines and infrastructure working from the bottom up each flank burning out as they go until they would be able to pinch it off at the top or into rock. With the steepness of slope and the size of the timber, this would be a fairly significant ask. Working below a fire on this slope presents numerous falling/rolling hazards. There will be many burning danger trees to fall exposing our personnel to additional risks. To complete this task within a two week time period would be optimistic. This would be a Type 1 incident from start to finish with all of its safety complexities.

PROBABILITY OF MEETING OBJECTIVES (HIGH, MEDIUM, LOW) 0

TOTAL VALUES AT RISK 'C' \$ ESTIMATED TOTAL SUPPRESSION COSTS 'C' \$ s.17

FIRE ANALYSIS VALUES AT RISK AND TRIGGER POINTS FOR FURTHER ACTION REQUIRED

- STEP 1: IDENTIFY POTENTIAL VALUES AT RISK ON MAP
- STEP 2: IDENTIFY TRIGGER POINTS ON MAP WHERE A REVIEW OF THE FIRE ANALYSIS OR ACTION TO SAFEGUARD IDENTIFIED VALUES IS REQUIRED
- STEP 3: IDENTIFY ACTIONS REQUIRED WHEN FIRE REACHES EACH TRIGGER POINT

TRIGGERPOINT	CONDITIONS WITH POTENTIAL FOR GROWTH	ACTIONS TO BE UNDERTAKEN
1- East Flank	The long term trend is for continued hot and dry weather. Any significant down valley west wind could push the fire out of the drainage and into more continuous timber. The fire will continue to grow to the north and south through the nature of its position on the slope and the steepness of the terrain. This type of growth is acceptable and will remain inside our trigger points. Growth to the west, up valley will also be of no concern currently.	Update FAS. The fire will have grown considerably through several slide chutes to threaten this point. How the fire crosses this trigger point will play a huge factor in how to proceed. If it is wind driven in the direction of Poplar Ck it will influence the need to engage in suppression activities in a timely manner. If it continues to back down, there perhaps will be some suitable resources available to create some useful containment lines to stop the fire from advancing towards values.



--	--	--



THIS PAGE TO BE COMPLETED WHEN ASSESSING, REVIEWING, OR MONITORING A FIRE THAT HAS A COMPLETED FIRE ANALYSIS

UPDATE#	DATE YYYY-MM-DD	NAME	COMMENTS

FIRE ANALYSIS UPDATE # _____

DATE AND TIME OF UPDATE Aug 2, 2017	FIRE # N71320	FIRE ZONE Kootenay Lake	FIRE CENTRE SE
LOCATION Rapid Creek		SIZE 500HA	GPS <input type="checkbox"/> YES <input checked="" type="checkbox"/> NO
1) ATTACH MAP SHOWING CURRENT PERIMETER		<input checked="" type="checkbox"/> YES	<input type="checkbox"/> NO
2) IDENTIFY ANY AREAS ON THE MAP WHERE THE FIRE IS ACTIVE.		<input type="checkbox"/> YES	<input checked="" type="checkbox"/> NO
3) ATTACH PHOTOS.		<input checked="" type="checkbox"/> YES	<input type="checkbox"/> NO
4). IS A NEW LONG RANGE FIRE GROWTH PROJECTION REQUIRED?		<input type="checkbox"/> YES	<input checked="" type="checkbox"/> NO <input type="checkbox"/> ATTACHED
POTENTIAL THREAT (INCLUDING SMOKE ISSUES) TO ANY IDENTIFIED VALUES			
<p>The fire has moved out of the Rapid Creek drainage and onto the face of the hill between Rapid and Poplar Creek. The fire displayed more vigorous behaviour on July 30, aided by a NW wind which resulted in its most significant fire growth. This new development has the fire threatening Poplar Creek township. An evacuation alert was put in place.</p>			
IS FIRE CLOSE TO ANY IDENTIFIED TRIGGER POINTS?			
<p>The fire is close if not over the original trigger point thus we have moved to Option 2 of the Fire Analysis.</p>			
IS THERE A CHANGE TO THE STRATEGY AND/OR TACTICS? (EXPLAIN):			
<p>Option 2 - The Poplar Creek FSR has been reopened and a contingency line has been developed surrounding the Polar Creek townsite. Air Tankers were employed to slow the spread of the fire downslope to provide time to get the line in place. A Unit Crew, an IA crew and 3 pieces of heavy equipment were employed for 2 days to build the infrastructure necessary to create a defensible space if the fire moves down slope beyond the new trigger point. There will be a need to close Hwy 31 if this is where the fire comes. A Structural Protection Unit and Specialist have been on site for an assessment and will remain on stand by for deployment if necessary. One IA Crew will be on site and others available if the incident triggers suppression activities. s.13</p>			
DOCUMENT ANY DISCUSSIONS WITH LANDMANGER OR STAKEHOLDERS			
<p>Discussions were had with the Chris Price of BC Parks. Our operations are outside of the Park boundary and he is aware of our tactics moving forward on this incident</p>			
DO ANY OTHER LANDMANAGERS OR STAKEHOLDERS NEED TO BE CONTACTED?			
<p>This update will be sent to this region's Land Manager and BC Parks.</p>			
HAS THE ESTIMATED TOTAL COST CHANGED?			



Yes. See revised Cost estimator. ^{s.17}

FIRE CENTRE

NAME

POSITION

SIGNATURE

FIRE CENTRE MANAGER COMMENTS

RECEIVED AT FIRE CENTRE - DATE [Click here to enter a date..](#)

FIRE CENTRE MANAGER SIGNATURE

LAND MANAGER SIGNATURE REQUIRED IF VALUES AFFECTED HAVE OR WILL CHANGE



LAND MANAGER COMMENTS

BC Parks supports maintaining a modified response within Goat Range Park.

Leo DeGroot (Wildlife Biologist - Nelson) has been contacted for advice on the caribou habitat. He has no concerns with the wildfire response.

LAND MANAGER

Rob MacDonald - BC Parks

POSITION

Section Head - Kootenay Section

DATE (YYYY/MM/DD)

August 5/2017

FA Route Card. This procedure applies to both the original and amended/updated FA

Fire Number: <u>N 71320 Rapid Crk</u>		Initial	Date/Time
Position			
PSO	<input checked="" type="checkbox"/> Place FA Route card on Original FA and stamp "Original". <input checked="" type="checkbox"/> Record on Tracking Sheet : G:\Workgrp\Fire-Operations\Plans\FORMS\Fire Analysis <input checked="" type="checkbox"/> Put a red FA magnet in front of the fire magnet on visual whiteboards. If Client Fire put C Magnet as well. <input checked="" type="checkbox"/> Enter "FA" & Client name (if applicable) under incident on Whiteboard in "Comment" section. <input checked="" type="checkbox"/> Initial route card. <input checked="" type="checkbox"/> Deliver to RWCO Office (black shelf on the wall) for review. <input checked="" type="checkbox"/> Get a Long Range Fire Growth Prediction (Request from PWCC)	TL PSO PUL K f. Aug 4, 2017	August 4th 2017 Date/Time 11:23
RWCO:	<input checked="" type="checkbox"/> Determine who will review FA: FCM or designate? <input type="checkbox"/> Full Response? FCM to review, comment and approve <input checked="" type="checkbox"/> Modified Response? <u>SPO Ops</u> , SPO Fire Management or DFCM to review, comment and approve. <input type="checkbox"/> Non-action IA fire(s)? RWCO to review, comment and approve s.22 <input type="checkbox"/> ASSIGNED TO _____ <input checked="" type="checkbox"/> Initial route card and forward to reviewer (if applicable)	RWCO	2070804 12:50 Date/Time
Review by:	<input checked="" type="checkbox"/> Review Original FA <input checked="" type="checkbox"/> Approve and sign FA OR <input type="checkbox"/> FA not approved (attach notes) <input checked="" type="checkbox"/> Initial route card	Reviewer	17-08-04 1205 Date/Time
RWCO:	<input checked="" type="checkbox"/> Review designee's comments <input checked="" type="checkbox"/> Initial route card and forward to PSO	RWCO	170804 1207 Date/Time
PSO	IF APPROVED: <input checked="" type="checkbox"/> Complete Tracking Sheet. <input checked="" type="checkbox"/> Advise IC, Land Manager, Aviation, F&A (for cost tracking) when approved and/or of any changes by faxing or scanning/ emailing section. <input checked="" type="checkbox"/> Fax or scan/email to PWCO ONLY for major incidents or sensitive fires (check with RWCO if in doubt). <u>NA</u> <input checked="" type="checkbox"/> Scan original FA & save within appropriate fire file. <input checked="" type="checkbox"/> RWCC SIT U/L to confirm information within the RSWAP Wildfire Priority Report, if applicable. <input checked="" type="checkbox"/> Initial route card and put original FA to fire file. IF NOT APPROVED: <input type="checkbox"/> Complete Tracking Sheet. <input type="checkbox"/> Initial route card. <input type="checkbox"/> File route card and copy of FA. <input type="checkbox"/> Return original FAS (with notes) to originator for corrections.	TL PSO	Aug 6, 2017 17:12 Date/Time



FIRE ANALYSIS

August
3RD
UPDATE

INCIDENT NO. N71320	DATE (YYYY-MM-DD) 2017-07-24	TIME (24HRS) 1300	CURRENT ESTIMATED SIZE 15 ha	ESTIMATED SIZE AT CONTROL 500 ha
LATITUDE 50° 25'	LONGITUDE 117° 12'	FIRE LOCATION (GEOGRAPHIC) Rapid Creek.		
FUEL TYPE / DESCRIPTION C4 - C 5				
WEATHER FORECAST FOR OR NEXT OPERATIONAL PERIOD (precipitation forecasted, drying trend, wind event, etc.)				
<p>Another very weak upper trough could clip just south of the central interior for cloudy periods and increased wind on Sunday. Otherwise the strong upper ridge of high pressure centred south of Idaho should build northward for mainly sunny and very warm conditions Saturday through Monday. The high temperatures should range from 28 to 32. The relative humidity should continue to drop into the teens each afternoon. Fair overnight recoveries should also persist. A weak upper trough (technically a cold front) will clip eastward across the area with cloudy periods, increased (becoming moderate) wind and the slight chance of a thunderstorm or light shower this afternoon and early evening. Otherwise a flat area of high pressure centred south of the border will maintain fairly sunny, dry and very warm conditions today, Friday and Saturday.</p>				
MAP ATTACHED <input checked="" type="checkbox"/> YES <input type="checkbox"/> NO				
FIRE BEHAVIOUR FORECAST ATTACHED <input checked="" type="checkbox"/> YES <input type="checkbox"/> NO				
LONG RANGE FIRE GROWTH PROJECTION REQUIRED <input checked="" type="checkbox"/> YES <input type="checkbox"/> NO Reason if No				
LONG RANGE FIRE GROWTH PROJECTION ATTACHED <input checked="" type="checkbox"/> YES <input type="checkbox"/> NO				
VALUES AT RISK: <input type="checkbox"/> Public Safety <input type="checkbox"/> Occupied Interface Area <input type="checkbox"/> Infrastructure/Assets - Private <input type="checkbox"/> Infrastructure -Public <input type="checkbox"/> High Environmental Values <input type="checkbox"/> High Socio Economic Values <input type="checkbox"/> Timber Resource <input checked="" type="checkbox"/> Recreation				
<input checked="" type="checkbox"/> Comments The fire is burning in the Goat Range Park. The terrain is steep and primarily covered in old growth timber. Access is difficult at best and the appropriate resources to support suppressing this incident are unavailable. There are slide chutes to the east of the fire which should slow the progress of the fire advancing out of the drainage and towards the Lardeau River. Fire growth to the west, up the drainage is not a concern.				
GENERAL CONTROL OBJECTIVES				
Monitor only at this time. Engaging this target would require extensive resources. The location of the fire currently makes it inaccessible and unworkable.				
STRATEGIES FOR THE INCIDENT				



FIRE ANALYSIS

The current strategy for the incident is to monitor only. We will utilize aircraft and personnel in the area to maintain a regular visual and update the zone and FC.

PROBABILITY OF MEETING OBJECTIVES

MEDIUM (HIGH, MEDIUM OR LOW)

ESTIMATED SUPPRESSION COSTS ^{s.17}

ESTIMATED DAILY COST TO CONTROL (from daily cost estimate) ^{s.17}

ESTIMATED VALUES PROTECTED \$ **AS PER LAND MANAGER**

LAND MANAGER COMMENTS

NAME _____

LAND OR FIRE MANAGEMENT PLAN OBJECTIVES ATTACHED: ☐ YES ☐ NO

SIGNATURE _____

OTHER AGENCY / STAKEHOLDER COMMENTS

NAME _____

LAND OR FIRE MANAGEMENT PLAN OBJECTIVES ATTACHED: ☐ YES ☐ NO

SIGNATURE _____

FIRE CENTRE REPRESENTATIVE COMMENTS

NAME _____

POSITION _____



FIRE ANALYSIS

SIGNATURE _____

CERTIFICATION LEVEL _____



FIRE ANALYSIS

INCIDENT COMMANDER SIGNATURE: Billy Stevens

APPROVED BY (FIRE CENTER MANAGER OR DESIGNATE) SIGNATURE:

SPECIFIC CONDITIONS (Provide specific conditions that would require a fire analysis update)

Costs exceed estimate.

Fire moves beyond assigned trigger points.

FIRE ANALYSIS

DETAILS ON ISSUES, CONSTRAINTS & VALUES AT RISK	
Smoke Issues	Fire is burning in the Goat Range Park and is visible from the community of Poplar Creek. Pending wind direction the smoke may be issues if it moves into the main valley and drifts south to the head of Kootenay Lake.
Isolated Structure	There are a number of small summer cabins about 3.5 km down the valley at the base in Poplar Creek SE of the fire which is not a concern at this time.
Slope Stability	The area is very steep. Several slide chutes in the area are evident.
Responder Safety	Currently the fire is too steep for ground crews to work safely. The timber is very large in the fire area which could pose a risk to responders.
Wildlife	The FMP has identified this area as wildlife habitat for Caribou Priority 1 and Biodiversity- High Blue listed Species.
2km Interface Buffer	The township of Poplar Creek is to the Southwest of the fire. Currently the fire is well outside the 2km buffer however as the fire continues to grow, this will be the value of concern if the it comes out of the Rapid Creek drainage.
OGMA	



FIRE ANALYSIS

There is a lot of old growth timber in the fire area.

FIRE CONTROL OBJECTIVES, STRATEGY AND TACTICS OPTIONS

OPTION 'A'

OBJECTIVE: Monitor Only

STRATEGY: Monitor Only. Utilize air patrols and a modest amount of aircraft time with an officer to perform recon missions every second day at a minimum. We will be utilizing these flights to update all of our MR fires in the zones so the cost will be dispersed over each incident.

TACTICS: No action. If the current trigger points are crossed, reassessment will be necessary.

PROBABILITY OF MEETING OBJECTIVES (HIGH, MEDIUM, LOW) 0

TOTAL VALUES AT RISK 'A' \$

ESTIMATED TOTAL SUPPRESSION COSTS 'A' ^{s.17}

OPTION 'B'

OBJECTIVE: Modified Response

STRATEGY: Indirect Attack

TACTICS: To prevent fire growth to the east towards triggers points, we will construct a fuel break using heavy machinery from Poplar Creek FSR towards Rapid Creek. Once constructed, we will engage in burn out operations to keep the fire from backing towards Poplar Creek and keep it burning upslope into the rocks or the height of land. This will be a multi-day operation requiring trained Type 1 personnel, a task force of heavy equipment and significant rotary wing bucket support.

PROBABILITY OF MEETING OBJECTIVES (HIGH, MEDIUM, LOW) 0

TOTAL VALUES AT RISK 'B' \$

ESTIMATED TOTAL SUPPRESSION COSTS 'B' ^{s.17}

OPTION 'C'

OBJECTIVE: Full Suppression

STRATEGY: Parallel

TACTICS: We will need a Rappel crew to establish access. This could take 2-3 days. We would then insert two Unit Crews to build containment lines and infrastructure working from the bottom up each flank burning out as they go until they would be able to pinch it off at the top or into rock. With the steepness of slope and the size of the timber, this would be a fairly significant ask. Working below a fire on this slope presents numerous falling/rolling hazards. There will be many burning danger trees to fall exposing our personnel to additional risks. To complete this task within a two week time period would be optimistic. This would be a Type 1 incident from start to finish with all of its safety complexities.

PROBABILITY OF MEETING OBJECTIVES (HIGH, MEDIUM, LOW) Low

TOTAL VALUES AT RISK 'C' \$

ESTIMATED TOTAL SUPPRESSION COSTS 'C' s.17

FIRE ANALYSIS VALUES AT RISK AND TRIGGER POINTS FOR FURTHER ACTION REQUIRED

- STEP 1: IDENTIFY POTENTIAL VALUES AT RISK ON MAP
- STEP 2: IDENTIFY TRIGGER POINTS ON MAP WHERE A REVIEW OF THE FIRE ANALYSIS OR ACTION TO SAFEGUARD IDENTIFIED VALUES IS REQUIRED
- STEP 3: IDENTIFY ACTIONS REQUIRED WHEN FIRE REACHES EACH TRIGGER POINT

TRIGGERPOINT	CONDITIONS WITH POTENTIAL FOR GROWTH	ACTIONS TO BE UNDERTAKEN
1- East Flank	The long term trend is for continued hot and dry weather. Any significant down valley west wind could push the fire out of the drainage and into more continuous timber. The fire will continue to grow to the north and south through the nature of its position on the slope and the steepness of the terrain. This type of growth is acceptable and will remain inside our trigger points. Growth to the west, up valley will also be of no concern currently.	Update FAS. The fire will have grown considerably through several slide chutes to threaten this point. How the fire crosses this trigger point will play a huge factor in how to proceed. If it is wind driven in the direction of Poplar Ck it will influence the need to engage in suppression activities in a timely manner. If it continues to back down, there perhaps will be some suitable resources available to create some useful containment lines to stop the fire from advancing towards values.



--	--	--



THIS PAGE TO BE COMPLETED WHEN ASSESSING, REVIEWING, OR MONITORING A FIRE THAT HAS A COMPLETED FIRE ANALYSIS

UPDATE#	DATE YYYY-MM-DD	NAME	COMMENTS



FIRE ANALYSIS UPDATE # _____

DATE AND TIME OF UPDATE Aug 2, 2017	FIRE # N71320	FIRE ZONE Kootenay Lake	FIRE CENTRE SE
LOCATION Rapid Creek		SIZE 500HA	GPS <input type="checkbox"/> YES <input checked="" type="checkbox"/> NO
1) ATTACH MAP SHOWING CURRENT PERIMETER		<input checked="" type="checkbox"/> YES	<input type="checkbox"/> NO
2) IDENTIFY ANY AREAS ON THE MAP WHERE THE FIRE IS ACTIVE.		<input type="checkbox"/> YES	<input checked="" type="checkbox"/> NO
3) ATTACH PHOTOS.		<input checked="" type="checkbox"/> YES	<input type="checkbox"/> NO
4). IS A NEW LONG RANGE FIRE GROWTH PROJECTION REQUIRED?		<input type="checkbox"/> YES	<input checked="" type="checkbox"/> NO <input type="checkbox"/> ATTACHED
POTENTIAL THREAT (INCLUDING SMOKE ISSUES) TO ANY IDENTIFIED VALUES			
The fire has moved out of the Rapid Creek drainage and onto the face of the hill between Rapid and Poplar Creek. The fire displayed more vigorous behaviour on July 30, aided by a NW wind which resulted in its most significant fire growth. This new development has the fire threatening Poplar Creek township. An evacuation order was put in place.			
IS FIRE CLOSE TO ANY IDENTIFIED TRIGGER POINTS?			
The fire is close if not over the original trigger point thus we have moved to Option 2 of the Fire Analysis.			
IS THERE A CHANGE TO THE STRATEGY AND/OR TACTICS? (EXPLAIN):			
Option 2 - The Poplar Creek FSR has been reopened and a contingency line has been developed surrounding the Polar Creek townsite. Air Tankers were employed to slow the spread of the fire downslope to provide time to get the line in place. A Unit Crew, an IA crew and 3 pieces of heavy equipment were employed for 2 days to build the infrastructure necessary to create a defensible space if the fire moves down slope beyond the new trigger point. There will be a need to close Hwy 31 if this is where the fire comes. A Structural Protection Unit and Specialist have been on site for an assessment and will remain on stand by for deployment if necessary. One IA Crew will be on site and others available if the incident triggers suppression activities. Otherwise, the lack of resources dictates Priorities 1 and 2 will remain our main focus.			
DOCUMENT ANY DISCUSSIONS WITH LANDMANGER OR STAKEHOLDERS			
Discussions were had with the Chris Price of BC Parks. Our operations are outside of the Park boundary and he is aware of our tactics moving forward on this incident			
DO ANY OTHER LANDMANAGERS OR STAKEHOLDERS NEED TO BE CONTACTED?			
This update will be sent to this region's Land Manager.			
HAS THE ESTIMATED TOTAL COST CHANGED?			



Yes. See revised Cost estimator^{s.17}

FIRE CENTRE

NAME

POSITION

SIGNATURE

FIRE CENTRE MANAGER COMMENTS

RECEIVED AT FIRE CENTRE - DATE [Click here to enter a date.](#)

FIRE CENTRE MANAGER SIGNATURE

LAND MANAGER SIGNATURE REQUIRED IF VALUES AFFECTED HAVE OR WILL CHANGE



LAND MANAGER COMMENTS

LAND MANAGER	POSITION	DATE (YYYY/MM/DD)



ORIGINAL

FIRE ANALYSIS UPDATE #

#1 as of August
2ND

DATE AND TIME OF UPDATE Aug 2, 2017	FIRE # N71320	FIRE ZONE Kootenay Lake	FIRE CENTRE SE
LOCATION Rapid Creek		SIZE 500HA	GPS <input type="checkbox"/> YES <input checked="" type="checkbox"/> NO
1) ATTACH MAP SHOWING CURRENT PERIMETER		<input checked="" type="checkbox"/> YES	<input type="checkbox"/> NO
2) IDENTIFY ANY AREAS ON THE MAP WHERE THE FIRE IS ACTIVE.		<input type="checkbox"/> YES	<input checked="" type="checkbox"/> NO
3) ATTACH PHOTOS.		<input checked="" type="checkbox"/> YES	<input type="checkbox"/> NO
4). IS A NEW LONG RANGE FIRE GROWTH PROJECTION REQUIRED?		<input type="checkbox"/> YES	<input checked="" type="checkbox"/> NO <input type="checkbox"/> ATTACHED
POTENTIAL THREAT (INCLUDING SMOKE ISSUES) TO ANY IDENTIFIED VALUES			
<p>The fire has moved out of the Rapid Creek drainage and onto the face of the hill between Rapid and Poplar Creek. The fire displayed more vigorous behaviour on July 30, aided by a NW wind which resulted in its most significant fire growth. This new development has the fire threatening Poplar Creek township. An evacuation order was put in place.</p>			
IS FIRE CLOSE TO ANY IDENTIFIED TRIGGER POINTS?			
<p>The fire is close if not over the original trigger point thus we have moved to Option 2 of the Fire Analysis.</p>			
IS THERE A CHANGE TO THE STRATEGY AND/OR TACTICS? (EXPLAIN):			
<p>Option 2 - The Poplar Creek FSR has been reopened and a contingency line has been developed surrounding the Polar Creek townsite. Air Tankers were employed to slow the spread of the fire downslope to provide time to get the line in place. A Unit Crew, an IA crew and 3 pieces of heavy equipment were employed for 2 days to build the infrastructure necessary to create a defensible space if the fire moves down slope beyond the new trigger point. There will be a need to close Hwy 31 if this is where the fire comes. A Structural Protection Unit and Specialist have been on site for an assessment and will remain on stand by for deployment if necessary. One IA Crew will be on site and others available if the incident triggers suppression activities. Otherwise, the lack of resources dictates Priorities 1 and 2 will remain our main focus.</p>			
DOCUMENT ANY DISCUSSIONS WITH LANDMANGER OR STAKEHOLDERS			
<p>Discussions were had with the Chris Price of BC Parks. Our operations are outside of the Park boundary and he is aware of our tactics moving forward on this incident</p>			
DO ANY OTHER LANDMANAGERS OR STAKEHOLDERS NEED TO BE CONTACTED?			
<p>This update will be sent to this region's Land Manager.</p>			
HAS THE ESTIMATED TOTAL COST CHANGED?			



Yes. See revised Cost estimator.^{s.17}

FIRE CENTRE

NAME

POSITION

SIGNATURE

FIRE CENTRE MANAGER COMMENTS

RECEIVED AT FIRE CENTRE - DATE [Click here to enter a date.](#)

FIRE CENTRE MANAGER SIGNATURE

LAND MANAGER SIGNATURE REQUIRED IF VALUES AFFECTED HAVE OR WILL CHANGE



LAND MANAGER COMMENTS

LAND MANAGER

POSITION

DATE (YYYY/MM/DD)



FIRE ANALYSIS

Note: Land Manager
updates and
comments
for August
2ND

The current strategy for the incident is to monitor only. We will utilize aircraft and personnel in the area to maintain a regular visual and update the zone and FC.

PROBABILITY OF MEETING OBJECTIVES

MEDIUM (HIGH, MEDIUM OR LOW)

ESTIMATED SUPPRESSION COSTS^{s.17}

ESTIMATED DAILY COST TO CONTROL (from daily cost estimator^{s.17})

ESTIMATED VALUES PROTECTED \$0

AS PER LAND MANAGER

LAND MANAGER COMMENTS

Timber values are still not at risk, as the fire is burning primarily in the park. Impacts to OGMA will affect timber availability. I agree with the planned course of action.

NAME Tara Decourcy

LAND OR FIRE MANAGEMENT PLAN OBJECTIVES ATTACHED: ☐ YES ☒ NO

SIGNATURE [Signature]

OTHER AGENCY / STAKEHOLDER COMMENTS

NAME _____

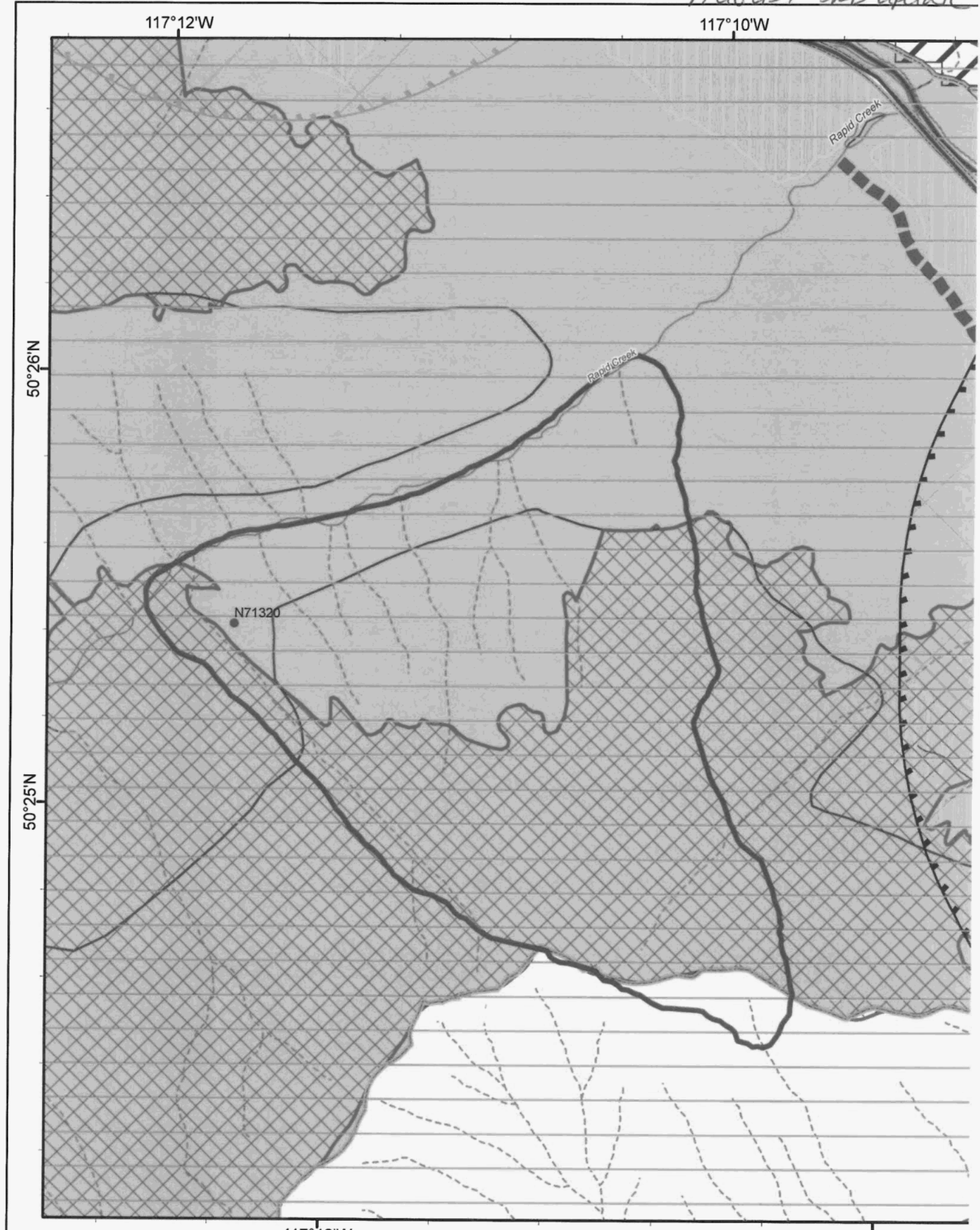
LAND OR FIRE MANAGEMENT PLAN OBJECTIVES ATTACHED: ☐ YES ☐ NO

SIGNATURE _____

FIRE CENTRE REPRESENTATIVE COMMENTS

NAME _____

POSITION _____



117°12'W

AUGUST 3RD - UPDATE

117°10'W

50°26'N

50°25'N

50°24'N

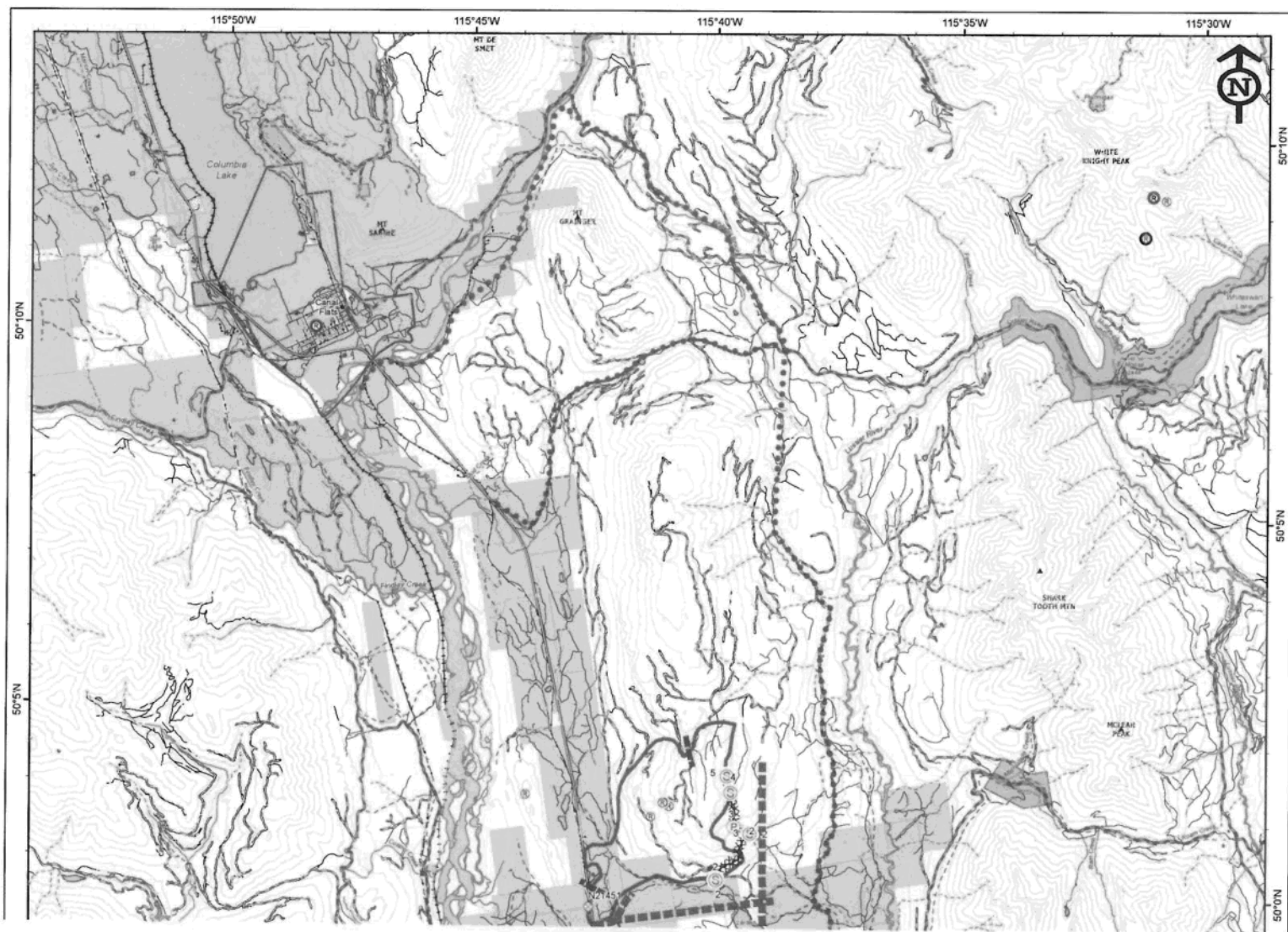
117°12'W

117°10'W

N71320

Rapid Creek

August 3RD update



August 3RD

DAILY COST ESTIMATOR

OPTION 2 update

		DAILY/HR RATE	DAY/ HR	HOURS COUNT	DAILY COST
MANPOWER		Daily rates are based on 12 hour day			
FOREST OFFICER	Avg daily rate +/- 12 hrs (STO 4, 5, 6)				s.17
UNIT CREW COSTS	\$/day based on a 20 person crew				
IA CREW COSTS	\$/day based on a 3 person crew				
FIRE DEPT COSTS	\$/apparatus hr (Based on O.G. 1.06.01)				
INDUSTRY CREWS	\$/hr including payroll loading per person				
CONTRACT CREWS	\$/day based on S.O. rate, 10 persons				
DSF/DTA COSTS	\$/day based on S.O. combined DTF/DTA				
STATUTORY HIRE	\$/hr avg over 12 hour day + 4% vacation				
STRUCTURAL PROTECTION	\$/day based on 1 SPS, 1-5 pack, 2 trucks, 1 SPU Crate				
OUT OF PROVINCE CREWS	OVERHEAD STAFF/person (CIFFC rate)				
	CREWS/person (CIFFC rate)				

AIRCRAFT COSTS

TOT

LIGHT	206B, H500
INTERMEDIATE	206L3, A-Star, 407, etc.
MEDIUM	Bell 205, 212, etc.
HEAVY	Bell 214B
	Sikorsky S-61
	K-MAX
	KAMOV
	Sikorsky S-64
AIRTANKERS	Electra Grp (1XL188) incl fuel, BD, retardant, availability
	Convair Grp (2XCV580) incl fuel, BD, retardant, availability
	Skimmer Group (4X802AF) inc fuel, BD, retardant, availability
	Airtractor Grp (4XAT802) incl fuel, BD, retardant, availability

TO

EQUIPMENT COSTS

WATER TENDER	3500 gallon self loading
SKIDDER c/w TANK	Based on 124-185 fwhp
EXCAVATOR (w/lowbed)	Based on 150-175 fwhp
CRAWLER	Based on D7
LOWBED	Based on 7-axle

TOTAL

SUPPORT COSTS

COMMAND POST	\$/week for Rental, overhead operating costs, etc
TRAVEL COSTS (not in camp)	\$/person/day for room, meals, etc
SECURITY SERVICES	Contract based on 2 persons with vehicle 12 hr day
FIRST AID SERVICES	Contract based on ETV, attendant, driver, 12 hr day
TRAFFIC CONTROL SERVICE	Contract based on 2 persons with vehicle 12 hr day

CAMP COSTS

BCFS CAMP - 100-200 pers	1x cost-Includes transport, setup, demob, refurb, repair
BCFS CAMP - 201-350+ pe	1x cost-Includes transport, setup, demob, refurb, repair
TRAVEL COSTS - (in camp)	\$/person/day in camp, includes meals & accomodations

TOTAL ESTIMATED SUPPORT & CAMP COSTS

\$ -

ADDED COSTS (Logistics, Support, Mobilization, Demob) Demob allowance of 2.5% to be added to daily costs

\$ -

\$ -

TOTAL ESTIMATED DAILY COST

s.17

FS1144B HPR 2014

Large, Toni J FLNR:EX

From: Allan, Mike A FLNR:EX
Sent: Thursday, August 3, 2017 5:13 PM
To: DeCourcy, Tara D FLNR:EX; Price, Chris ENV:EX
Cc: BCWS SEFC Plans FLNR:EX
Subject: Updated FA N71320
Attachments: 17 N71320 Fire Analysis(Updated Aug 2).docx; 17 N71320 FAS MAP1 11x17L 20170803.pdf; 17 N71320 FAS MAP2 11x17L 20170803.pdf; 17 N71320 Daily Cost Estimator Option 2 (Updated Aug 2).xlsx

Folks:

I have updated the FA for N71320 for your perusal. Please call if you have any questions. The maps lay out our new trigger points and the contingency lines around Poplar Creek. Tara... if you could just have a look and sign at the bottom. Same for you Chris or your designate. Thanks.

Mike Allan

Forest Protection Technician

Kootenay Lake Fire Zone, Southeast Fire Centre

Office: (250) 825-1174 | Cell: (250) 505-8336



BC Wildfire Service

Ministry of Forests, Lands &
Natural Resource Operations

N71320

N7^c/N5

Initial Phone Report: ID: 134279

(Ack By: RMCCLARY @ 24/07/2017-09:46:12)

Event Number:

NotAssigned

Latitude/Longitude:

50° 17.031 / -117° 19.028

20 Minutes:

Yes

Entered By:

MODAVIES on 24/07/2017-09:46:04

Caller's Name:

s.22

Phone Information:

s.22

Geographic:

Cascade Mountain

Relative Location:

Cascade Mountain

Directions to the Fire:

Vancouver Area control ** Second hand report

Coordiantes Provided - IPR location

50 17.0

117 19.0

3-5 acres in size

looks new with white smoke

no other info

Fuel:

Smoke Colour:

Fire Size:

unknown

Is Anybody Fighting:

Rate of Spread:

Unknown

Values Threatened:

Interface:

No

Comment History:



MK

Fire Type Fire Size 1400.00 Status Out 2017 N71320

ORIGIN

Geographic Latitude Longitude
Rapid Creek -Modified Response 50 25.363 117 12.047 ☐ Interface?

Reference Weather Station	Elevation (m)	Slope (%)	Aspect	Classification	Response	Rank
387 TROUT LAKE	1393	60	N	3	Modified	3

General Cause	Specific Cause	<input checked="" type="checkbox"/> Cause is Known	Incident Commander
Lightning	Lightning	<input type="checkbox"/> Holdover?	Stevens, Billy

LEGAL RESPONSIBILITY

Responsible Group	Occupied / Caused by	General Land Status	Specific Land Status
		Park	Provincial

INCIDENT HISTORY

Function	Start Date	Size	Agency	Discovering Lookout
----------	------------	------	--------	---------------------

Ignition	2017/07/20 16:10			
Discovery	2017/07/24 06:41	0.10	General Public	
First Report	2017/07/24 06:45	0.10	General Public	
Second Report	2017/07/24 09:46	0.10	Other	
Ground Attack	2017/07/24 11:41	1.80	FS Personnel	
Air Attack	2017/07/24 12:47	1.80	Fixed Wing Airtankers	
Final Control				s.17
Mop Up				
Patrol	2017/10/06 14:02	1,400.00	Crews (IA/Rap/Unit/Parattack)	
Fire Out	2017/11/03 09:40	1,400.00	FS Personnel	

INCIDENT COSTS

Preparedness	\$0.00
Direct Fire	\$0.00
Other Agencies	

DAMAGES (FIRES FOUR HECTARES AND LARGER)

Species	Volume (m3)	Expected Salvage %	Forest Type Group	Age (Years)	Area (hectares)
---------	-------------	--------------------	-------------------	-------------	-----------------

OTHER INFORMATION

Other Cover Area	Recovery <input type="checkbox"/>
Damage to Cut Products	Claim <input type="checkbox"/>
Damage to Buildings	Rehab <input checked="" type="checkbox"/>
Damage to Equipment	Contravention
Damage to Improvements	IA Success <input type="checkbox"/>
Comments	Instructions Issued <input type="checkbox"/>
Fire Analysis: Unable to action due to terrain	Warning Ticket Issued <input type="checkbox"/>
	Violation Ticket Issued <input type="checkbox"/>

Report Signed Off Westerhaug Art 2017/11/10 09:37
Data Entry Complete EFR Conversion 2017/11/10 09:39





FA Route Card. This procedure applies to both the original and amended/updated FA

Fire Number: N 71320 Rapid Crt		Initial	Date/Time
Position			
PSO	<input checked="" type="checkbox"/> Place FA Route card on Original FA and stamp "Original". <input checked="" type="checkbox"/> Record on Tracking Sheet : G:\Workgrp\Fire-Operations\Plans\FORMS\Fire Analysis. <input checked="" type="checkbox"/> Put a red FA magnet in front of the fire magnet on visual whiteboards. If Client Fire put C Magnet as well. <input checked="" type="checkbox"/> Enter "FA" & Client name (if applicable) under incident on Whiteboard in "Comment" section. <input checked="" type="checkbox"/> Initial route card. <input checked="" type="checkbox"/> Deliver to RWCO Office (black shelf on the wall) for review. <input checked="" type="checkbox"/> Get a Long Range Fire Growth Prediction (Request from PWCC)	TL PSO PUL K J. Aug 4, 2017	August 4th 2017 Date/Time 11:23
RWCO:	<input checked="" type="checkbox"/> Determine who will review FA: FCM or designate? <input type="checkbox"/> Full Response? FCM to review, comment and approve <input checked="" type="checkbox"/> Modified Response? <u>SPO Ops, SPO Fire Management or DFCM</u> to review, comment and approve. <input type="checkbox"/> Non-action IA fire(s)? RWCO to review, comment and approve <input type="checkbox"/> ASSIGNED TO <u>s.22</u> <input checked="" type="checkbox"/> Initial route card and forward to reviewer (if applicable)	TL RWCO	2870804 12:50 Date/Time
Review by:	<input checked="" type="checkbox"/> Review Original FA <input checked="" type="checkbox"/> Approve and sign FA OR <input type="checkbox"/> FA not approved (attach notes) <input checked="" type="checkbox"/> Initial route card	TL Reviewer	17-08-04 1205 Date/Time
RWCO:	<input checked="" type="checkbox"/> Review designee's comments <input checked="" type="checkbox"/> Initial route card and forward to PSO	TL RWCO	170804 1207 Date/Time
PSO	IF APPROVED: <input checked="" type="checkbox"/> Complete Tracking Sheet. <input checked="" type="checkbox"/> Advise IC, Land Manager, Aviation, F&A (for cost tracking) when approved and/or of any changes by faxing or scanning/initialing section. <input checked="" type="checkbox"/> Fax or scan/email to PWCO ONLY for major incidents or sensitive fires (check with RWCO if in doubt). NA <input checked="" type="checkbox"/> Scan original FA & save within appropriate fire file. <input checked="" type="checkbox"/> RWCC SIT U/L to confirm information within the RSWAP Wildfire Priority Report, if applicable. <input checked="" type="checkbox"/> Initial route card and put original FA to fire file. IF NOT APPROVED: <input type="checkbox"/> Complete Tracking Sheet. <input type="checkbox"/> Initial route card. <input type="checkbox"/> File route card and copy of FA. <input type="checkbox"/> Return original FAS (with notes) to originator for corrections.	TL PSO	Aug 6, 2017 17:12 Date/Time

Ministry of Forests and Range				INITIAL FIRE REPORT		INCIDENT NUMBER N51320	
REPORTED BY SE75				DATE 17 OCT 24		TIME 1118	
GEOGRAPHIC LOCATION Cascade 17th							
CO-ORDINATES LAT 50 25.363 LONG 117 12.048				ELEVATION 4600 M ^{ASL}			
ALPHA - SIZE		BRAVO - FIRE RANK		CHARLIE - FUELS			
<input type="checkbox"/> 1. Single Tree <input type="checkbox"/> 2. Spot _____ m X _____ m <input checked="" type="checkbox"/> 3. 0.1 - 0.2 <input type="checkbox"/> 4. 0.3 - 0.5 <input type="checkbox"/> 5. 0.6 - 1.0 <input type="checkbox"/> 6. 1.1 - 2.0 <input type="checkbox"/> 7. 2.1 - 4.0 <input type="checkbox"/> 8. 4.1 - 8.0 <input type="checkbox"/> 9. Other _____ ha		<input type="checkbox"/> 1. Rank 1, Smoldering Ground Fire <input type="checkbox"/> 2. Rank 2, Open Flame, No Spread <input checked="" type="checkbox"/> 3. Rank 3, Vigorous Surface Fire, Moderate Spread, May See Candling <input type="checkbox"/> 4. Rank 4, Moderate to Fast Spread Short Aerial Bursts, Spotting <input type="checkbox"/> 5. Rank 5, Continuous Crown Fire, Spotting, dist. _____ m <input type="checkbox"/> 6. Rank 6, Continuous Crown, Blow-up		<input type="checkbox"/> 1. Grass <input type="checkbox"/> 2. Brush <input type="checkbox"/> 3. Deciduous <input type="checkbox"/> 4. Slash <input type="checkbox"/> 5. Reproduction <input checked="" type="checkbox"/> 6. Open Timber <input type="checkbox"/> 7. Heavy Timber <input type="checkbox"/> 8. Other _____ <input type="checkbox"/> 9. FBP Type _____			
DELTA - VALUES AT RISK (Immediately Threatened)						ECHO - WIND	
<input type="checkbox"/> 1. Life/Property _____ <input checked="" type="checkbox"/> 2. Timber (Forest) Resources (Includes Reproduction) _____ <input type="checkbox"/> 3. Other Special Values (Watersheds, Parks) _____ <input type="checkbox"/> 4. Distance _____ m. N S E W of the fire						<input type="checkbox"/> 1. Calm <input checked="" type="checkbox"/> 2. Speed 15 kph <input type="checkbox"/> 3. Direction N S E W W	
FOXTROT - ADJACENT FUELS			GOLF - SLOPE		HOTEL - ASPECT		
<input type="checkbox"/> 1. Grass <input type="checkbox"/> 2. Brush <input type="checkbox"/> 3. Deciduous <input type="checkbox"/> 4. Slash <input type="checkbox"/> 5. Reproduction			<input type="checkbox"/> 6. Open Timber <input checked="" type="checkbox"/> 7. Heavy Timber <input type="checkbox"/> 8. Other _____ <input type="checkbox"/> 9. FBP Type _____		<input type="checkbox"/> 1. Flat/Rolling <input type="checkbox"/> 2. Moderate < 30% <input checked="" type="checkbox"/> 3. Steep > 30% < 60% <input checked="" type="checkbox"/> 4. Extreme > 60%		
INDIA - SLOPE POSITION			JULIET - ACCESS		KILO - AVAILABLE WATER		
<input checked="" type="checkbox"/> 1. Bottom <input checked="" type="checkbox"/> 2. Lower Third <input type="checkbox"/> 3. Middle Third <input type="checkbox"/> 4. Upper Third <input type="checkbox"/> 5. Top			<input type="checkbox"/> 1. Road _____ m <input type="checkbox"/> 2. Helispot _____ m <input checked="" type="checkbox"/> 3. Hover Exit 700 m N <input type="checkbox"/> 4. Other _____ m <input type="checkbox"/> 5. N S E W of the fire		<input type="checkbox"/> 1. None <input type="checkbox"/> 2. Adjacent <input checked="" type="checkbox"/> 3. 100 m. N S E W of the fire		
LIMA - PAPER TRAILED		MIKE - PHOTOS		NOVEMBER - SUSPECTED FIRE CAUSE			
<input type="checkbox"/> 1. Yes <input checked="" type="checkbox"/> 2. No		<input checked="" type="checkbox"/> 1. Yes <input type="checkbox"/> 2. No		<input type="checkbox"/> 1. Human <input checked="" type="checkbox"/> 2. Lighting			
ACTION TAKEN/RECOMMENDED							
DUE TO ACCESS IFA TO BUILD HELISPOT below fire min. 10 pack type 1 crew to contain spread							
JUL 24 2017 Page 2 of 2							
PROBABILITY OF SUCCESS: LOW <input checked="" type="checkbox"/> MED <input checked="" type="checkbox"/> HIGH _____							
RECEIVED BY: RM				ESTIMATED COST OF CONTROL: \$ _____			

FS 260 HPR 2007/05

FA Route Card. This procedure applies to both the original and amended/updated FA

Fire Number: <u>N71392 - Healy</u>		Initial	Date/Time
Position			
PSO	<input checked="" type="checkbox"/> Place FA Route card on Original FA and stamp "Original". <input checked="" type="checkbox"/> Record on Tracking Sheet : G:\Workgrp\Fire-Operations\Plans\FORMS\Fire Analysis <input checked="" type="checkbox"/> Put a red FA magnet in front of the fire magnet on visual whiteboards. If Client Fire put C Magnet as well. <input type="checkbox"/> Enter "FA" & Client name (if applicable) under incident on Whiteboard in "Comment" section. <input checked="" type="checkbox"/> Initial route card. <input checked="" type="checkbox"/> Deliver to RWCO Office (black shelf on the wall) for review. <input checked="" type="checkbox"/> Get a Long Range Fire Growth Prediction (Request from PWCC)	 PSO	<u>Aug 1/17</u> Date/Time
RWCO:	<input checked="" type="checkbox"/> Determine who will review FA: FCM or designate? <input type="checkbox"/> Full Response? FCM to review, comment and approve <input checked="" type="checkbox"/> Modified Response? <u>SPO Ops</u> , SPO Fire Management or DFCM to review, comment and approve. <input type="checkbox"/> Non-action IA fire(s)? RWCO to review, comment and approve <input checked="" type="checkbox"/> ASSIGNED TO <u>s.22</u> <input checked="" type="checkbox"/> Initial route card and forward to reviewer (if applicable)	 RWCO	<u>170003/1600</u> Date/Time
Review by:	<input checked="" type="checkbox"/> Review Original FA <input checked="" type="checkbox"/> Approve and sign FA OR <input type="checkbox"/> FA not approved (attach notes) <input checked="" type="checkbox"/> Initial route card	 Reviewer	<u>170003/1600</u> Date/Time
RWCO:	<input checked="" type="checkbox"/> Review designee's comments <input checked="" type="checkbox"/> Initial route card and forward to PSO	 RWCO	<u>170003/1600</u> Date/Time
PSO	IF APPROVED: <input checked="" type="checkbox"/> Complete Tracking Sheet. <input checked="" type="checkbox"/> Advise IC, Land Manager, Aviation, F&A (for cost tracking) when approved and/or of any changes by faxing or scanning/emailing section. <u>willemail</u> <input checked="" type="checkbox"/> Fax or scan/email to PWCO ONLY for major incidents or sensitive fires (check with RWCO if in doubt). <u>NA</u> <input checked="" type="checkbox"/> Scan original FA & save within appropriate fire file. <input checked="" type="checkbox"/> RWCC SIT U/L to confirm information within the RSWAP Wildfire Priority Report, if applicable. <input checked="" type="checkbox"/> Initial route card and put original FA to fire file. IF NOT APPROVED: <input type="checkbox"/> Complete Tracking Sheet. <input type="checkbox"/> Initial route card. <input type="checkbox"/> File route card and copy of FA. <input type="checkbox"/> Return original FAS (with notes) to originator for corrections.	<u>TL</u> PSO	<u>Aug 6, 2017</u> <u>13:05</u> Date/Time



ORIGINAL

FIRE ANALYSIS

date? *2014?*

DATE (YYYY-MM-DD) 2014-05-29	TIME (24HRS) 1300	CURRENT ESTIMATED SIZE 100 ha	ESTIMATED SIZE AT CONTROL 1500 ha
LONGITUDE 117° 13'	FIRE LOCATION (GEOGRAPHIC) Healy Ck.		

WEATHER FORECAST FOR OR NEXT OPERATIONAL PERIOD (precipitation forecasted, drying trend, wind event, etc.)

Very dry, fairly sunny/clear and very warm conditions should persist as the strong upper area of high pressure holds or builds slightly northward from Nevada Tuesday through Thursday. A series of weak upper disturbances could drift over the area of high pressure with limited moisture for cloudy periods Tuesday and Tuesday night. A tightening surface based pressure gradient could result in a moderate (risk of strong gusts) north or northeast at times Tuesday and possibly Tuesday night. Lighter winds should prevail Wednesday and Thursday. The temperatures could be slightly cooler on Tuesday and then trend warmer Wednesday-Thursday.

MAP ATTACHED ☒ YES ☐ NO

FIRE BEHAVIOUR FORECAST ATTACHED

☒ YES ☐ NO

LONG RANGE FIRE GROWTH PROJECTION REQUIRED ☒ YES ☐ NO Reason if No

LONG RANGE FIRE GROWTH PROJECTION ATTACHED ☒ YES ☐ NO

*RWCC requests PFA's
Duncan WxSTW Reference CS fuel type*

VALUES AT RISK: ☐ Public Safety ☐ Occupied Interface Area ☒ Infrastructure/Assets - Private ☐ Infrastructure -Public
☐ High Environmental Values ☐ High Socio Economic Values ☐ Timber Resource ☒ Recreation

☒ Comments

This fire is situated well back in the Healy Ck. drainage NE of Trout Lake. The visual evidence in the area suggests there have been many fires in this area in the past. The values of concern would be caribou habitat. The fire sits in an Old Growth Management Area and the licence is held by Meadow Ck. s.15

GENERAL CONTROL OBJECTIVES

This fire will remain a monitor only incident due to its location in the back country, the fire behaviour predictions, the values currently at risk and the lack of provincial resources available to make suppression achievable. Accessibility is by air only as Healy Ck FSR has been washed out. The fire is currently burning up from Healy Creek and to the North into the rocks.

STRATEGIES FOR THE INCIDENT

Monitor Only. The one caveat s.15
s.15

Trigger points have been set to engage in structure protection if the fire backs down and across the creek.



FIRE ANALYSIS

PROBABILITY OF MEETING OBJECTIVES

High (HIGH, MEDIUM OR LOW)

ESTIMATED SUPPRESSION COSTS \$¹⁷

ESTIMATED DAILY COST TO CONTROL (from daily cost estimator) \$¹⁷

ESTIMATED VALUES PROTECTED \$()

AS PER LAND MANAGER

LAND MANAGER COMMENTS

No concerns with actions as proposed. Impacts to OGMA and Caribou habitat may impact long term timber availability.

NAME Tara DeCourcy

LAND OR FIRE MANAGEMENT PLAN OBJECTIVES ATTACHED:

☒ YES ☐ NO

SIGNATURE

OTHER AGENCY / STAKEHOLDER COMMENTS

NAME _____

LAND OR FIRE MANAGEMENT PLAN OBJECTIVES ATTACHED:

☐ YES ☐ NO

SIGNATURE _____

FIRE CENTRE REPRESENTATIVE COMMENTS

NAME _____

POSITION _____

SIGNATURE _____

CERTIFICATION LEVEL _____



FIRE ANALYSIS

INCIDENT COMMANDER SIGNATURE: Mike Allan

APPROVED BY (FIRE CENTER MANAGER OR DESIGNATE) SIGNATURE:

s.22

SPECIFIC CONDITIONS (Provide specific conditions that would require a fire analysis update)

- 1) If the fire exceeds its predicted costs
- 2) If the fire crosses any trigger points



FIRE ANALYSIS

DETAILS ON ISSUES, CONSTRAINTS & VALUES AT RISK	
Isolated Structure	s.15
Caribou Habitat	The FMP suggest this whole area is Caribou habitat.
OGMA	The FMP suggests this whole area is an Old Growth Management Area.
Forest Tenure	Meadow Creek.
Accessibility	Healy Creek FSR is unpassable and the fire in the far north of the zone. Fly in access only at this point. The terrain is synonymous with the Kootenays... steep and rocky.
Resources	There are none. Provincially there is so much higher priority activity and the potential of new starts in areas of greater concern, attaining and committing resources where they could be better used would be prohibitive.



Ministry of
Forests, Lands and
Natural Resource Operations

FIRE ANALYSIS



FIRE CONTROL OBJECTIVES, STRATEGY AND TACTICS OPTIONS

OPTION 'A'

OBJECTIVE: Monitor Only/Modified Response

STRATEGY: Monitor Only. At a minimum, a zone RO will perform recci flights over the incident every second day to observe growth.

TACTICS: RO flights to determine fire ^{s.15}. If the fire crosses the Creek, breaching Trigger Point #2, we will deploy a crew by heli to install a sprinkler sytem to create a wet zone in direct ^{s.15}. This is all fire behaviour permitting the safety of personnel. Conversations have been had with CMH Fuel Supervisor and he is aware of the possibility ^{s.15}. If the fire breaches Trigger Point #3, we would need to bucket in direct ^{s.15} or utilize tankers if time permitted.

PROBABILITY OF MEETING OBJECTIVES (HIGH, MEDIUM, LOW) MED

TOTAL VALUES AT RISK 'A' \$

ESTIMATED TOTAL SUPPRESSION COSTS 'A' ^{s.17}

OPTION 'B'

OBJECTIVE: Monitor Only

STRATEGY: There really is no other objective at this time. Considering everything else going on and the fact there are no significant values in the direct vacinity, it would be advised not to tie up other resources and accept losses in the back country.

TACTICS: Stick with Option 1

PROBABILITY OF MEETING OBJECTIVES (HIGH, MEDIUM, LOW) 0

TOTAL VALUES AT RISK 'B' \$

ESTIMATED TOTAL SUPPRESSION COSTS 'B' ^{s.17}

OPTION 'C'



OBJECTIVE:

STRATEGY:

TACTICS:

PROBABILITY OF MEETING OBJECTIVES (HIGH, MEDIUM, LOW)

TOTAL VALUES AT RISK 'C' \$

ESTIMATED TOTAL SUPPRESSION COSTS 'C' \$



FIRE ANALYSIS VALUES AT RISK AND TRIGGER POINTS FOR FURTHER ACTION REQUIRED

- STEP 1: IDENTIFY POTENTIAL VALUES AT RISK ON MAP
- STEP 2: IDENTIFY TRIGGER POINTS ON MAP WHERE A REVIEW OF THE FIRE ANALYSIS OR ACTION TO SAFEGUARD IDENTIFIED VALUES IS REQUIRED
- STEP 3: IDENTIFY ACTIONS REQUIRED WHEN FIRE REACHES EACH TRIGGER POINT

TRIGGERPOINT	CONDITIONS WITH POTENTIAL FOR GROWTH	ACTIONS TO BE UNDERTAKEN
#1-South Flank	The conditions are such that fire growth potential is a foregone conclusion. It will only be a matter of which direction. Winds out of the south will keep the fire in the back of the drainage and away from our Southern trigger point. North winds will challenge the creek and our line in the sand.	At this time our actions will be to reassess the current trigger point and update the FAS with a new one. The fire will need to come along way out of the drainage or risk values 1 and 2 for it to receive a higher priority.
s.15	The conditions are such that fire growth potential is a foregone conclusion thus the fire is likely to cross the creek at some point.	If the fire reaches trigger point #2, we will consider sending an IA CREW with a sprinkler kit to provide water to the structure and the surrounding area if fire behaviour permits.
	The conditions are such that fire growth potential is a foregone conclusion thus the fire is likely to cross the creek at some point.	If the fire reaches trigger point #3, the utilization of a bucket machine to control the fire spread directly s.15 will be considered fire behaviour permitting.

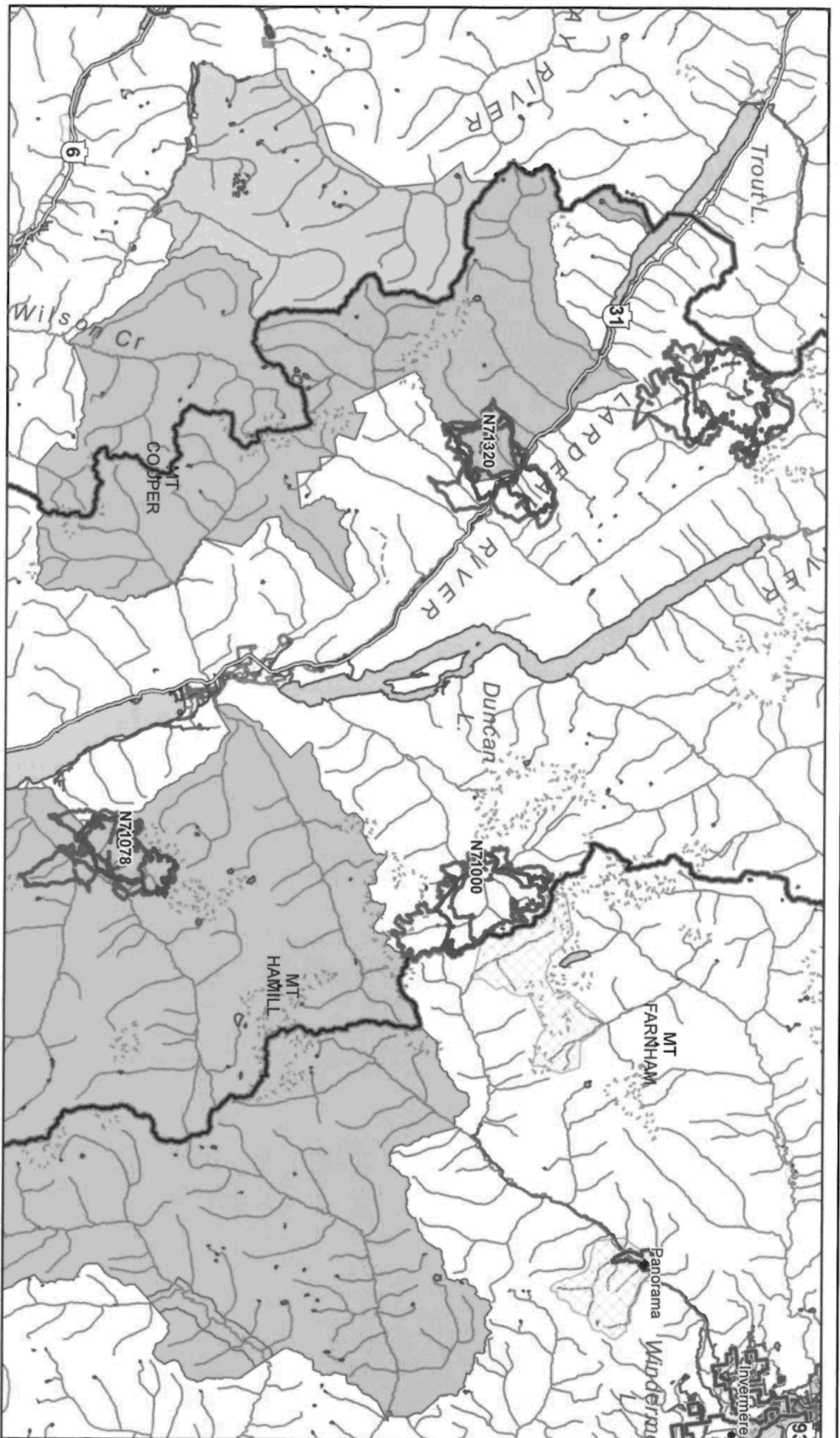


--	--	--



THIS PAGE TO BE COMPLETED WHEN ASSESSING, REVIEWING, OR MONITORING A FIRE THAT HAS A COMPLETED FIRE ANALYSIS

UPDATE#	DATE YYYY-MM-DD	NAME	COMMENTS



N71320
PROMETHEUS Simulations 1, 2 & 3
July 30, 2017 to August 01, 2017

1:450,000



kilometres

- ☐ SIM1 - July 30, 2017
- ☐ SIM 2 - July 31, 2017
- ☐ SIM 3 - August 01, 2017
- ☐ Fire Perimeter
July 27, 2017

- ☐ Fire Centres
- ☐ Parks & Protected Area Values
- ☐ Highway
- ☐ Forest Service Road
- ☐ Road
- ☐ Road Permit



Disclaimer:
 Fire information is updated as it is received.
 Information shown on this map may not reflect the
 most current fire situation and therefore should
 only be used for reference purposes.

Data Sources and Notes

Note:
 SIM1 - July 30, 2017
 SIM 2 - July 31, 2017
 SIM 3 - August 01, 2017
 Fire Perimeter as of July 27, 2017

Filename: N71320_PROM 8.5x11L
Projection: NAD 1983 BC Environment Albers
Datum: North American 1983
Date/Time Created/Revised: Jul 29, 2017 2015
Created by: mfaruqi

Page 59

Withheld pursuant to/removal as

Copyright

DAILY COST ESTIMATOR

		DAILY/HR RATE	DAY/ HR	HOURS COUNT	DAILY COST
MANPOWER		Daily rates are based on 12 hour day			
FOREST OFFICER	Avg daily rate +/- 12 hrs (STO 4, 5, 6)	s.17			
UNIT CREW COSTS	\$/day based on a 20 person crew				
IA CREW COSTS	\$/day based on a 3 person crew				
FIRE DEPT COSTS	\$/apparatus hr (Based on O.G. 1.06.01)				
INDUSTRY CREWS	\$/hr including payroll loading per person				
CONTRACT CREWS	\$/day based on S.O. rate, 10 persons				
DSF/DTA COSTS	\$/day based on S.O. combined DTF/DTA				
STATUTORY HIRE	\$/hr avg over 12 hour day + 4% vacation				
STRUCTURAL PROTECTION	\$/day based on 1 SPS, 1-5 pack, 2 trucks, 1 SPU Crate				
OUT OF PROVINCE CREWS	OVERHEAD STAFF/person (CIFFC rate)				
	CREWS/person (CIFFC rate)				
		TOTAL			
AIRCRAFT COSTS					
LIGHT	206B, H500				
INTERMEDIATE	206L3, A-Star, 407, etc.				
MEDIUM	Bell 205, 212, etc.				
HEAVY	Bell 214B				
	Sikorsky S-61				
	K-MAX				
	KAMOV				
	Sikorsky S-64				
AIRTANKERS	Electra Grp (1XL188) incl fuel, BD, retardant, availability				
	Convair Grp (2XCV580) incl fuel, BD, retardant, availability				
	Skimmer Group (4X802AF) inc fuel, BD, retardant, availability				
	Airtractor Grp (4XAT802) incl fuel, BD, retardant, availability				
		TOTAL			
EQUIPMENT COSTS					
WATER TENDER	3500 gallon self loading				
SKIDDER c/w TANK	Based on 124-185 fwhp				
EXCAVATOR (w/lowbed)	Based on 150-175 fwhp				
CRAWLER	Based on D7				
LOWBED	Based on 7-axle				
		TOTAL			
SUPPORT COSTS					
COMMAND POST	\$/week for Rental, overhead operating costs, etc				
TRAVEL COSTS (not in camp)	\$/person/day for room, meals, etc				
SECURITY SERVICES	Contract based on 2 persons with vehicle 12 hr day				
FIRST AID SERVICES	Contract based on ETV, attendant, driver, 12 hr day				
TRAFFIC CONTROL SERVICE	Contract based on 2 persons with vehicle 12 hr day				
CAMP COSTS					
BCFS CAMP - 100-200 pers	1x cost-Includes transport, setup, demob, refurb, repair				
BCFS CAMP - 201-350+ pe	1x cost-Includes transport, setup, demob, refurb, repair				
TRAVEL COSTS - (in camp)	\$/person/day in camp, includes meals & accomodations				
TOTAL ESTIMATED SUPPORT & CAMP COSTS					\$ -
ADDED COSTS (Logistics, Support, Mobilization, Demob) Demob allowance of 2.5% to be added to daily costs					
					\$ -
					\$ -
TOTAL ESTIMATED DAILY COST					\$ s.17





F31144B MPK 2014

		INITIAL FIRE REPORT		INCIDENT NUMBER N71392
REPORTED BY Healy Creek		DATE 17 07 27		TIME 20:10
GEOGRAPHIC LOCATION				
CO-ORDINATES LAT 50 36.292 LONG 117 13.644			ELEVATION 5600 ^{M/ft}	
ALPHA - SIZE <input type="checkbox"/> 1. Single Tree <input type="checkbox"/> 2. Spot mX m <input type="checkbox"/> 3. 0.1 - 0.2 <input type="checkbox"/> 4. 0.3 - 0.5 20ha <input type="checkbox"/> 5. 0.6 - 1.0 <input type="checkbox"/> 6. 1.1 - 2.0 <input type="checkbox"/> 7. 2.1 - 4.0 <input type="checkbox"/> 8. 4.1 - 8.0 <input type="checkbox"/> 9. Other ha		BRAVO - FIRE RANK <input type="checkbox"/> 1. Rank 1, Smoldering Ground Fire <input type="checkbox"/> 2. Rank 2, Open Flame, No Spread <input checked="" type="checkbox"/> 3. Rank 3, Vigorous Surface Fire, Moderate Spread, May See Candling <input type="checkbox"/> 4. Rank 4, Moderate to Fast Spread Short Aerial Bursts, Spotting <input type="checkbox"/> 5. Rank 5, Continuous Crown Fire, Spotting, dist. m <input type="checkbox"/> 6. Rank 6, Continuous Crown, Blow-up		CHARLIE - FUELS <input type="checkbox"/> 1. Grass <input type="checkbox"/> 2. Brush <input type="checkbox"/> 3. Deciduous <input type="checkbox"/> 4. Slash <input type="checkbox"/> 5. Reproduction <input type="checkbox"/> 6. Open Timber <input checked="" type="checkbox"/> 7. Heavy Timber <input type="checkbox"/> 8. Other m <input type="checkbox"/> 9. FBP Type m
DELTA - VALUES AT RISK (Immediately Threatened) <input type="checkbox"/> 1. Life/Property S.15 <input type="checkbox"/> 2. Timber (Forest) Resources (includes Reproduction) <input type="checkbox"/> 3. Other Special Values (Watersheds, Parks)			ECHO - WIND <input type="checkbox"/> 1. Calm <input checked="" type="checkbox"/> 2. Speed 5 kph <input type="checkbox"/> 3. Direction N SE W	
FOXTROT - ADJACENT FUELS <input type="checkbox"/> 1. Grass <input type="checkbox"/> 2. Brush <input type="checkbox"/> 3. Deciduous <input checked="" type="checkbox"/> 4. Slash <input checked="" type="checkbox"/> 5. Reproduction		<input type="checkbox"/> 6. Open Timber <input type="checkbox"/> 7. Heavy Timber <input type="checkbox"/> 8. Other m <input type="checkbox"/> 9. FBP Type m	GOLF - SLOPE <input type="checkbox"/> 1. Flat/Rolling <input type="checkbox"/> 2. Moderate < 30% <input type="checkbox"/> 3. Steep > 30% < 60% <input checked="" type="checkbox"/> 4. Extreme > 60%	HOTEL - ASPECT <input type="checkbox"/> 1. North <input type="checkbox"/> 2. South <input checked="" type="checkbox"/> 3. East <input type="checkbox"/> 4. West
INDIA - SLOPE POSITION <input type="checkbox"/> 1. Bottom <input type="checkbox"/> 2. Lower Third <input checked="" type="checkbox"/> 3. Middle Third <input type="checkbox"/> 4. Upper Third <input type="checkbox"/> 5. Top	JULIET - ACCESS <input checked="" type="checkbox"/> 1. Road 750 m <input type="checkbox"/> 2. Helispot m <input type="checkbox"/> 3. Hover Exit m <input type="checkbox"/> 4. Other m <input type="checkbox"/> 5. N S E W of the fire		KILO - AVAILABLE WATER <input type="checkbox"/> 1. None 400 <input type="checkbox"/> 2. Adjacent <input type="checkbox"/> 3. m N S E W of the fire	
LIMA - PAPER TRAILED <input type="checkbox"/> 1. Yes <input checked="" type="checkbox"/> 2. No	MIKE - PHOTOS <input checked="" type="checkbox"/> 1. Yes <input type="checkbox"/> 2. No	NOVEMBER - SUSPECTED FIRE CAUSE <input type="checkbox"/> 1. Human <input checked="" type="checkbox"/> 2. Lighting		
ACTION TAKEN/RECOMMENDED				
<div style="font-size: 1.5em; font-weight: bold; text-align: center;">steep</div> <div style="font-size: 1.2em;">mid slope cresting Ridge, unactionable, natural control line and trigger points, PA point of view.</div>				
<div style="border: 2px solid black; padding: 5px; display: inline-block; font-size: 1.5em; font-weight: bold;">FAXED</div>				
PROBABILITY OF SUCCESS: LOW <input checked="" type="checkbox"/> MED <input type="checkbox"/> HIGH <input type="checkbox"/>				
RECEIVED BY: Zoe Walton		ESTIMATED COST OF CONTROL: \$ 111 25 000		

FS 260 HPR 2007/05

Page 6015 of 200

FA Route Card. This procedure applies to both the original and amended/updated FA

Fire Number: <u>N71392 Healy</u>		Initial	Date/Time
Position PSO	<input checked="" type="checkbox"/> Place FA Route card on Original FA and stamp "Original". <input checked="" type="checkbox"/> Record on Tracking Sheet : G:\Workgrp\Fire-Operations\Plans\FORMS\Fire Analysis <input checked="" type="checkbox"/> Put a red FA magnet in front of the fire magnet on visual whiteboards. If Client Fire put C Magnet as well. <input type="checkbox"/> Enter "FA" & Client name (if applicable) under incident on Whiteboard in "Comment" section. <input checked="" type="checkbox"/> Initial route card. <input checked="" type="checkbox"/> Deliver to RWCO Office (black shelf on the wall) for review. <input checked="" type="checkbox"/> Get a Long Range Fire Growth Prediction (Request from PWCC)	 PSO	<u>Aug 1/17</u> Date/Time
RWCO:	<input checked="" type="checkbox"/> Determine who will review FA: FCM or designate? <input type="checkbox"/> Full Response? FCM to review, comment and approve <input checked="" type="checkbox"/> Modified Response? <u>SPO Ops</u> , SPO Fire Management or DFCM to review, comment and approve. <input type="checkbox"/> Non-action IA fire(s)? RWCO to review, comment and approve s.22 <input checked="" type="checkbox"/> ASSIGNED TO _____ <input checked="" type="checkbox"/> Initial route card and forward to reviewer (if applicable)	 RWCO	<u>170003/1600</u> Date/Time
Review By:	<input checked="" type="checkbox"/> Review Original FA <input checked="" type="checkbox"/> Approve and sign FA OR <input type="checkbox"/> FA not approved (attach notes) <input checked="" type="checkbox"/> Initial route card	 Reviewer	<u>170003/1600</u> Date/Time
RWCO:	<input checked="" type="checkbox"/> Review designee's comments <input checked="" type="checkbox"/> Initial route card and forward to PSO	 RWCO	<u>170003/1600</u> Date/Time
PSO	IF APPROVED: <input checked="" type="checkbox"/> Complete Tracking Sheet. <input checked="" type="checkbox"/> Advise IC, Land Manager, Aviation, F&A (for cost tracking) when approved and/or of any changes by faxing or scanning/emailing section. <u>will email</u> <input checked="" type="checkbox"/> Fax or scan/email to PWCO ONLY for major incidents or sensitive fires (check with RWCO if in doubt). <u>NA</u> <input checked="" type="checkbox"/> Scan original FA & save within appropriate fire file. <input checked="" type="checkbox"/> RWCC SIT U/L to confirm information within the RSWAP Wildfire Priority Report, if applicable. <input checked="" type="checkbox"/> Initial route card and put original FA to fire file. IF NOT APPROVED: <input type="checkbox"/> Complete Tracking Sheet. <input type="checkbox"/> Initial route card. <input type="checkbox"/> File route card and copy of FA. <input type="checkbox"/> Return original FAS (with notes) to originator for corrections.	<u>TL</u> PSO	<u>Aug 6, 2017</u> <u>13:05</u> Date/Time

Fire Type Fire Size 1070.00 Status Out 2017 N71392

ORIGIN

Geographic
Healy Creek - Modified Response Latitude 50 36.292 Longitude 117 13.644 ☐ Interface?

Reference Weather Station Elevation (m) Slope (%) Aspect Classification Response Rank
387 TROUT LAKE 1696 90 NW 3 Modified 4

General Cause Specific Cause ☒ Cause is Known Incident Commander
Lightning Lightning ☐ Holdover? Westerhaug, Art

LEGAL RESPONSIBILITY

Responsible Group Occupied / Caused by General Land Status Specific Land Status
Crown Land, Vacant Vacant

INCIDENT HISTORY

Function	Start Date	Size	Agency	Discovering Lookout
Ignition	2017/07/20 20:08			
Discovery	2017/07/27 20:05	20.00 Other		
First Report	2017/07/27 20:10	20.00 Other		
Second Report				
Ground Attack				
Air Attack				
Final Control				
Mop Up				
Patrol	2017/09/13 13:01	1,070.00 FS Personnel		
Fire Out	2017/10/20 12:41	1,070.00 FS Personnel		

INCIDENT COSTS

Preparedness \$0.00
Direct Fire \$0.00
Other Agencies
s.17

DAMAGES (FIRES FOUR HECTARES AND LARGER)

Species Volume (m3) Expected Salvage % Forest Type Group Age (Years) Area (hectares)

OTHER INFORMATION

Other Cover Area Recovery ☐
Damage to Cut Products Claim ☐
Damage to Buildings Rehab ☐
Damage to Equipment Contravention
Damage to Improvements IA Success ☐
Comments Instructions Issued ☐
Fire analysis Warning Ticket Issued ☐
Violation Ticket Issued ☐

Report Signed Off Westerhaug Art 2017/10/20 12:43
Data Entry Complete EFR Conversion 2017/10/20 12:44

Page 64 to/à Page 73

Withheld pursuant to/removed as

s.15