

Incident Action Plan

K20637

August 10, 2017





Stay hydrated, take breaks, and look out for each other on the fireline.

Prepared by s.22 Planning Section Chief.

s.22

Approved for implementation by s.22 Incident Commander

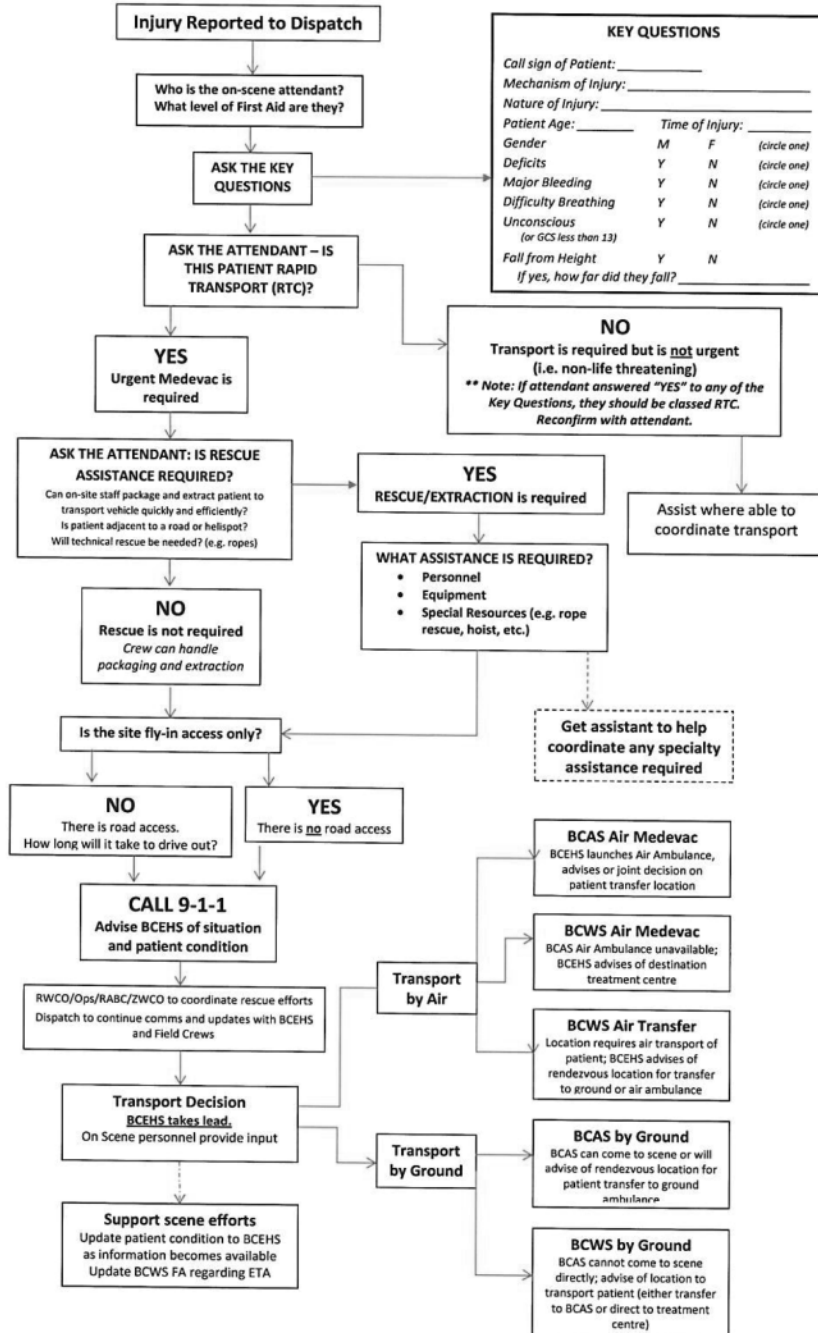
INCIDENT OBJECTIVES			
Incident#	K20637	Operational period	0700-2000
GENERAL OBJECTIVES (Detailed objectives in DIV Assignments)			
Command:	<ul style="list-style-type: none">• Provide for the safety of all responders - and ensure safe operations.• Prioritize use of resources.• Liaise with outside partners.		
Operations:	<ul style="list-style-type: none">• Values protection in Clinton, West Fraser Mill and 70 Mile.• Seek opportunities for burn operations.• Allocation of resources as required.		
Plans:	<ul style="list-style-type: none">• Daily IAP for distribution before morning shift start.• Resource tracking, documentation, fire mapping.• Contingency planning.		
Logistics:	<ul style="list-style-type: none">• Processing fire orders.• Filling Resource Requests.		
Finance:	<ul style="list-style-type: none">• Process daily time slips.• Track and report daily/total costs.• Ensure agreements / contracts are in place.		
SAFETY MESSAGE			
<p>On large, complex incidents such as the Elephant Hill Fire, change is a necessary fact of life that must be accepted. This incident has already spanned three incident management teams, with the fourth taking control of the fire today. While incident management team turnover days are notorious for contributing to issues with safety and communication, it must be recognized that it isn't just turnover at the top levels that can create a hazardous situation for the workers on the ground. Turnover is occurring at all levels every day.</p> <p>As the incident grows and evolves, these changes to leadership and personnel will increase. Risks to fireline workers increase significantly during transfer of command (turnover) periods, regardless of the size or complexity of the incident. Historically, it has been shown that there is a higher potential for fatalities, serious injuries, or other incidents during transfer of command periods. One of the biggest issues associated with transitional periods is that not all resources may know who they are reporting to or who is in command of the incident as reporting relationships change.</p> <p>Some strategies that can be employed to mitigate the hazards associated with these changes include:</p> <ul style="list-style-type: none">• Ensure operational briefings and tailgate safety meetings are thorough and that all resources are actively participating. These briefings must include everyone— firefighters, fallers, equipment operators, etc.—and should be interactive in order to confirm understanding.• Keep in mind that information flow does not stop with the briefing. Updates on weather, fire behavior, work progress, changes in strategy/tactics, arrival of additional resources, and any other changes should be constant throughout each day.• Strive to maintain situational awareness, ensuring that LACES are in place at all times. As you move around the fire, be sure to adjust your LACES accordingly. <p>Make quality communications a priority. Communicate hazards, acknowledge messages, and, above all else, ask if you don't know.</p>			

	Ministry of Forests, Lands and Natural Resource Operations BC Wildfire Service		Fire Behaviour Forecast #28 K20637								
Issued Date & Time:	August 9, 2017 17:00 hrs	Forecast Period:	August 10, 2017 0700-2000	FBAN - s.22							
SAFETY											
<p>Know your conditions! <i>Scout your fire working area well when working in smoked in conditions. Recce your fire and know your RH.</i></p>											
Fire Behaviour Advisory for: All conifer dominated fuel types when onsite 10m open winds are in excess of 10km/hr.	C3		Fire Behaviour Advisory Today From 11:00 to 21:00 due to very dry windy conditions								
	C7										
	S-1										
WEATHER DISCUSSION											
<p>Today: Widespread smoke. A 20% chance of an afternoon thunderstorm. Winds NW-NE 5-15 km/h. Occasional afternoon gusts to 25 km/h High temperature 33 and RH minimum 15%.</p> <p>Outlook for Friday: The ridge is pushed east of the region by a trough digging in along the coast, leaving the fire area in a southwesterly flow. Inflow winds will bring the surface winds to the southwest to southeast. Isolated convection may also occur. Temperatures will cool one or two degrees and RH values will be in the twenties.</p>											
Young Lake Weather Station (1170 meters) 1300 hrs Weather and FWI Indices for the Peak Burn Period											
Date	Temp	RH %	WD	W S	Prec.	FFMC	DMC	DC	ISI	BUI	FWI
August 9 Actuals	31	17	N-NW	5	0	96	171	686	13	211	47
August 10 Forecast	31	17	N-NW	10	0	95	176	694	17	216	54
August 11 Forecast	27	28	S	15	0	95	181	702	18	220	57
FIRE BEHAVIOUR DISCUSSION											
<p>We should see current conditions continue throughout the day remaining <u>very hot and dry</u> with temperatures with northerly wind influence. Change is coming Friday with a southerly wind event without precipitation causing significant fire growth in areas that are not well anchored.</p> <p><u>Anticipate winds to drop off at 20:00 and switch to downvalley for the overnight period.</u></p>											
FIRE BEHAVIOUR SPECIFIC											
<p>The following is based on equilibrium fire spread during the peak burning period with <u>10m open winds sustained at 10km/hr</u> (multiply by 1.5 from your measured wind) Appropriate slope corrections are required for your location relative to the fire</p>											
Fuel type		ROS		Intensity Class & Fire Type							
C3 Mature Lodgepole Pine		20 m/min (head) 2 m/min (back)		I.C. 6 – Continuous Crown							
C-7b 80% grass cure Mature Douglas Fir		7 m/min (head) >1 m/min (back)		I.C. 5 - Surface Fire w Intermittent Crown							
S-1 Pine Plantation Slash		30 m/min (head) 5 m/min (back)		I.C. 6 - Surface Fire							

Communications Plan				
CHANNEL	FUNCTION	FREQUENCY TONE	ASSIGNMENT	REMARKS
s.15	Command, Primary North Repeater	s.15	Command, Air Check-ins, Safety Check-ins, Medivac	Main Admin Channel
	Command, Primary South Repeater		Command, Air Check-ins, Safety Check-ins, Medivac	Cache Creek Channel
	Command Secondary Repeater		Command, Safety Check-ins	Secondary Admin Channel
	Cache Creek Helibase Check-ins		Air check-ins, Safety Check-ins Div O & Q	Helibase to KFC
	Command, East Branch Repeater		Command, Air Check-ins, Safety Check-ins, Medivac	East Branch
	Air to Air		Air Operations	
	Air to Air		Air Operations	Tactical West
	Air to Air		Air Operations	Tactical East
	Air to Ground N & E		Air to Ground	Operations
	Air to Ground West		Air to Ground	Operations
	Ground to Ground		Fire Operations	All Divisions
	Ground to Ground		Fire Operations	East Branch
	Ground to Ground		Fire Operations	North & West
	Ground to Ground		Fire Operations	South
	Ignition		Fire Operations	Operations
Ensure that at least one person on your crew is monitoring Iron to allow for contact with HELCOs				
If you are using s.15 or Ground to Ground comms, please reassign to a different channel. S. will now be used for Air to Ground				
STRUCTURE BRANCH				
s.15	Structure Branch Communication	s.15	Command/Safety	Structure Branch
	Veasy Rd		West Branch	
	Chasm/Hihium Rd		North/East Branch	
	Battle/Back Valley Rd		East Branch	
	All unassigned roads		Road Travel	All Divisions
CHECK IN PROCEDURES				
<div>1. Each division supervisor, or designate, will check in with the monitoring fire centre (in this case Kamloops Fire Centre) that all personnel are on site as per the IAP. If there are any deviations from the IAP this must be communicated to the fire centre.</div> <div>2. Division supervisors will do 4 hour check ins with the Kamloops Fire Centre.</div> <div>3. At the end of the day each division supervisor will check in with the Kamloops Fire Centre that all personnel are safely back in camp.</div> <div>4. Single resources not assigned to a division will do 2 hour checks with the Kamloops Fire Centre.</div> <div>5. Courtesy check with the division supervisor should be done when entering and leaving their area.</div>				
Please communicate any feedback to logistics for radio coverage issues				

Medical Ops Plan K20637	Date	Operational Period:	0700hrs to 2000hrs					
	August 10, 2017							
MEDIC STATION Call Sign	LOCATION	s. 15	Start Times	Paramedics				
				Yes	No			
Cache Creek Camp Medic	Cache Creek Camp (day & night)		24hr		X			
Hihium Lake Medic	Hihium Lake (day)		24hr		X			
Mound Road Medic	Fenton Road/Mound Road Junction (day)		0700		X			
Two Flags Medic	Two Flags Helispot (day)		0700		X			
Battle Creek Medic	Battle Creek FSR/Back Valley Road Junction (day)		0700		X			
Clinton Camp Medic	Clinton Camp (day & night)		0700		X			
Chasm FSR Medic	Chasm FSR (day)		0700		X			
Loon Lake Road Medic	Loon Lake Road (night)		2000		X			
Night Ops Medic	TBD (night)	2000		X				
Medics must record the name of their company, as well as the crew/employer of the patient on all First Aid Records.								
Fireline First Aid								
<ul style="list-style-type: none"> Crew First Aid Attendants will be designated daily and will render initial first aid until the patient can be transferred to a higher level of care. 								
Transportation								
Name	Call Sign	Phone	Paramedics					
			Yes	No				
BC Ambulance*		911	X					
Air Medivac	s. 15			X				
* BC Ambulance not available in Clinton.								
HOSPITALS								
Name	Address	Travel Time		Phone	Helipad?		Burn Unit?	
		Air	Ground		Yes	No	Yes	No
Royal Inland Hospital	311 Columbia Ave, Kamloops	30min	75min	250-374-5111	X			X
100 Mile District General Hospital	555 Cedar Avenue South, 100 Mile House		47min	250-395-7600		X		X
Ashcroft Hospital (18:00 Friday to 08:00 on Monday)	700 Ash-Cache Creek Hwy, Ashcroft		36min	250-453-2211		X		X
MEDICAL PROCEDURES								
<p>All injuries are to be reported to the supervisor immediately. Medic, Safety Officer, and Fire Centre will be notified by the supervisor.</p> <ul style="list-style-type: none"> Crew first aid attendant will assess the injury and treat. First Aid attendant will notify the Medic and determine the level of treatment required. First Aid Attendant or Medic in charge of the patient will determine the method of transport and the transport location. Requests for transport will be made through the supervisor. Supervisor will ensure that necessary documents are completed and turned in to the Safety Officer. <p>AIR MEDIVAC PROCEDURES: SERIOUS INJURIES</p> <ul style="list-style-type: none"> Requests for air medivac will be made through the Division Supervisor to KFC Dispatch. Dispatch will coordinate BC Ambulance Service (BCAS) response. Appropriate aircraft will be designated for medivac by AOBD. First Aid Attendant in charge will determine the destination in consultation with Dispatch: ambulance or hospital. BCAS may change the destination or rendezvous en route. <p>GROUND TRANSPORT PROCEDURES: MINOR INJURIES</p> <ul style="list-style-type: none"> First Aid Attendant in charge will render First Aid and determine that ground transport is adequate. Patient is either released or transported by vehicle to ambulance or hospital. Patient transfer to ambulance will occur as soon as possible. Other minor injuries will be directed to the hospital as required. <p>Note: In most cases, BCAS will be unable to travel off paved roads to complete patient transfers.</p>								
BRANCH DIRECTORS! Update Plans Section if Medic locations change.								

Flow Chart for Incident Medivac Example



o | r d a g e

Division Assignment List						
Branch:	West	Division:	s.15			
Incident Number:	K20637	Operational Period:	0700-2000			
OPERATIONS PERSONNEL						
Ops Chief	s.22	Ops Branch Director	s.22			
Div Sup		HLCO				
RESOURCE ASSIGNMENTS						
Strike Team Task Force	Leader	Call Sign	Start Time	Back to Camp	Specific Crew Instruction	
s.15	s.22	s.15	0700	1900	Move bubble s.22	
			0700	2000	DTA/DTF	
			0700	2000	DTA/DTF	
			0700	2000	Patrol Loon lk road for hot spots	
			0700	2000	Collect excess gear from line	
			0700	2000	Collect excess gear from line	
CONTROL OBJECTIVES						
<ul style="list-style-type: none"> Mop up 50 ft around bubbles and along road Patrol structures for hotspots (extinguish if any found) Demob unused gear and return to warehouse Maintain sprinkler lines to houses and bubble sprinklers Complete burn ops as required 						
HAZARD ASSESSMENT						
Weather	Slope	Unstable Rock	Powerlines	Radio Dead Zones	H2S	Heavy Equipment
Traffic	Heli Pad	Hover Exit	Air Tanker	Long Line & Bucketing	4X4 Access	Remote Worksite
Falling Ops	Size 14-28cm	Wind	Slope	Danger Trees/ Ha	Timber Type	Safe Work Distances
Danger Trees	High BUI	Overhead Hazards	Mechanical Damage minimal		Other	Other
Hazard: Slope Powerlines Radio dead zones High BUI			Control Measure: (Refer to OSWS, BC Faller Safety Info Flips, DTA Manual and SOP's to control hazards checked above) If tree falls on powerline stay 10 m back and report to TFL Alpha. High BUIs – assess each day before commencing work Call comms @ Loon Lake community hall or 2 flags staging (medic) Stay Hydrated Dead zones - use travel radio to call long distances			

REMEMBER TO REASSESS HAZARDS DAILY AS CONDITIONS AND ASSIGNMENTS CHANGE
 PROVIDE UPDATED COORDINATES FOR MEDIC LOCATIONS, SAFETY ZONES AND HELIPADS
 SHARE YOUR LESSONS FROM NEAR MISSES, INJURIES AND SUCCESSFUL OPERATIONS

PLEASE EMAIL DIV ASSIGNMENTS TO FireK20637PL@gov.bc.ca BEFORE 15:00

Division Assignment List						
Branch:	West	Division:	s.15			
Incident Number:	K20637	Operational Period:	0700-2000			
OPERATIONS PERSONNEL						
Ops Chief	s.22	Ops Branch Director	s.15,s.22			
Div Sup		HLCO				
RESOURCE ASSIGNMENTS						
Strike Team Task Force	Leader	Call Sign	Start Time	Back to Camp	Specific Crew Instruction	
s.15	s.22	s.15	0700	2000		
			0700	1900		
			0700	2000		
CONTROL OBJECTIVES						
<ul style="list-style-type: none"> Mop up and patro s.22 to power lines Look for burning opportunity along the Veasey Road Mop up and patrol Wagon Wheel Road Look for containment options on western edge of fire 						
HAZARD ASSESSMENT						
Weather	Slope	Unstable Rock	Powerlines	Radio Dead Zones	H2S	Heavy Equipment
Traffic	Heli Pad	Hover Exit	Air Tanker	Long Line & Bucketing	4X4 Access	Remote Worksite
Falling Ops	Size	Wind	Slope	Danger Trees/ Ha	Timber Type	Safe Work Distances
Danger Trees	High BUI	Overhead Hazards	Mechanical Damage		Other	Other Livestock
Hazard: Fatigue Fireline Hazards			Control Measure: (Refer to OSWS, BC Faller Safety Info Flips, DTA Manual and SOP's to control hazards checked above) <ul style="list-style-type: none"> For crews nearing the end of their deployment be cautious regarding fatigue management Hazards still exist even when the tasks are mop-up and patrol. Do not become complacent. 			

REMEMBER TO REASSESS **HAZARDS** DAILY AS CONDITIONS AND ASSIGNMENTS CHANGE
 PROVIDE UPDATED COORDINATES FOR MEDIC LOCATIONS, SAFETY ZONES AND HELIPADS
 SHARE YOUR LESSONS FROM NEAR MISSES, INJURIES AND SUCCESSFUL OPERATIONS

PLEASE EMAIL DIV ASSIGNMENTS TO FireK20637PL@gov.bc.ca BEFORE 15:00

Division Assignment List						
Branch:	West	Division:	s.15			
Incident Number:	K20637	Operational Period:	0700-2000			
OPERATIONS PERSONNEL						
Ops Chief	s.22	Ops Branch Director	s.22			
Div Sup		HLCO				
RESOURCE ASSIGNMENTS						
Strike Team Task Force	Leader	Call Sign	Start Time	Back to Camp	Specific Crew Instruction	
s.15	s.22	s.15	0700	2000		
			0700	1900		
CONTROL OBJECTIVES						
<ul style="list-style-type: none"> Support ignition operations Complete burn ignition above s.22 Patrol hoselines and guard Mop up - Support structure protection 						
HAZARD ASSESSMENT						
Weather	Slope	Unstable Rock	Powerlines	Radio Dead Zones	H2S	Heavy Equipment
Traffic	Heli Pad	Hover Exit	Air Tanker	Long Line & Bucketing	4X4 Access	Remote Worksite
Falling Ops	Size 14-28cm	Wind	Slope	Danger Trees/ Ha	Timber Type	Safe Work Distances
Danger Trees	High BUI	Overhead Hazards	Mechanical Damage minimal		Other	Other
Hazard: Slope Hydropoles Radio dead zones High BUI Burn operations			Control Measure: (Refer to OSWS, BC Faller Safety Info Flips, DTA Manual and SOP's to control hazards checked above) <ul style="list-style-type: none"> Watch for rolling rocks and slippery terrain. Don't work upslope of other personnel. See page 42 Use radio relay in dead zones Reassess for DTA/DTF in areas with prolonged burning Adhere to SWS #9 			

REMEMBER TO REASSESS **HAZARDS** DAILY AS CONDITIONS AND ASSIGNMENTS CHANGE
 PROVIDE UPDATED COORDINATES FOR MEDIC LOCATIONS, SAFETY ZONES AND HELIPADS
 SHARE YOUR LESSONS FROM NEAR MISSES, INJURIES AND SUCCESSFUL OPERATIONS

PLEASE EMAIL DIV ASSIGNMENTS TO FireK20637PL@gov.bc.ca BEFORE 15:00

Division Assignment List						
Branch:	West	Division:	s.15			
Incident Number:	K20637	Operational Period:	0700-2000			
OPERATIONS PERSONNEL						
Ops Chief	s.22	Ops Branch Director	s.22			
Div Sup		HLCO				
RESOURCE ASSIGNMENTS						
Strike Team Task Force	Leader	Call Sign	Start Time	Back to Camp	Specific Crew Instruction	
s.15	s.22	s.15	0700	1900		
			0700	1900		
			0700	1900		
			0700	1900		
			0700	2000		
CONTROL OBJECTIVES						
<ul style="list-style-type: none"> Continue mop up Move crews if required Recover and recycle equipment if required Monitor values where needed 						
HAZARD ASSESSMENT						
Weather	Slope	Unstable Rock	Powerlines	Radio Dead Zones	H2S	Heavy Equipment
Traffic	Heli Pad	Hover Exit	Air Tanker	Long Line & Bucketing	4X4 Access	Remote Worksite
Falling Ops	Size	Wind	Slope	Danger Trees/ Ha	Timber Type	Safe Work Distances
Danger Trees	High BUI	Overhead Hazards	Mechanical Damage		Other	Other
Hazard: Fatigue Fireline Hazards			Control Measure: (Refer to OSWS, BC Faller Safety Info Flips, DTA Manual and SOP's to control hazards checked above) <ul style="list-style-type: none"> For crews nearing the end of their deployment be cautious regarding fatigue management Hazards still exist even when the tasks are mop-up and patrol. Do not become complacent. 			

REMEMBER TO REASSESS **HAZARDS** DAILY AS CONDITIONS AND ASSIGNMENTS CHANGE
 PROVIDE UPDATED COORDINATES FOR MEDIC LOCATIONS, SAFETY ZONES AND HELIPADS
 SHARE YOUR LESSONS FROM NEAR MISSES, INJURIES AND SUCCESSFUL OPERATIONS

PLEASE EMAIL DIV ASSIGNMENTS TO FireK20637PL@gov.bc.ca BEFORE 15:00

Division Assignment List						
Branch:	North		Division:	s.15		
Incident Number:	K20637		Operational Period:	0700-2000		
OPERATIONS PERSONNEL						
Ops Chief	s.22		North Branch Director	s.22		
Div Sup			HLCO			
RESOURCE ASSIGNMENTS						
Strike Team Task Force	Leader	Call Sign	Start Time	Back to Camp	Specific Crew Instruction	
s.15	s.22	s.15	0700	2000		
			0700	2000		
			0700	1900		
			0700	1900		
CONTROL OBJECTIVES						
•						
HAZARD ASSESSMENT						
Weather	Slope	Unstable Rock	Powerlines	Radio Dead Zones	H2S	Heavy Equipment
Traffic	Heli Pad	Hover Exit	Air Tanker	Long Line & Bucketing	4X4 Access	Remote Worksite
Falling Ops	Size	Wind	Slope	Danger Trees/ Ha	Timber Type	Safe Work Distances
Danger Trees	High BUI	Overhead Hazards	Mechanical Damage		Other	Other

REMEMBER TO REASSESS HAZARDS DAILY AS CONDITIONS AND ASSIGNMENTS CHANGE
 PROVIDE UPDATED COORDINATES FOR MEDIC LOCATIONS, SAFETY ZONES AND HELIPADS
 SHARE YOUR LESSONS FROM NEAR MISSES, INJURIES AND SUCCESSFUL OPERATIONS

PLEASE EMAIL DIV ASSIGNMENTS TO FireK20637PL@gov.bc.ca BEFORE 15:00

Division Assignment List						
Branch:	North		Division:	s.15		
Incident Number:	K20637		Operational Period:	0700-2000		
OPERATIONS PERSONNEL						
Ops Chief	s.22		North Branch Director	s.22		
Div Sup			HLCO			
RESOURCE ASSIGNMENTS						
Strike Team Task Force	Leader	Call Sign	Start Time	Back to Camp	Specific Crew Instruction	
s.15	s.22	s.15	0700	2000	s.15 dozer line to NE/Burn to dozer	
			0700	2000	s.15 Mop Up	
			0700	1900	Mop up & patrol	
			0700	1900	Mop up & patrol	
CONTROL OBJECTIVES						
<ul style="list-style-type: none"> • Build dozer line to the NE • Burn off from new dozer line • Mop up along dozer line to 15ft • DTA/DTF roadways as required • Build control line to the east of Bonaparte River 						
HAZARD ASSESSMENT						
Weather	Slope	Unstable Rock	Powerlines	Radio Dead Zones	H2S	Heavy Equipment
Traffic	Heli Pad	Hover Exit	Air Tanker	Long Line & Bucketing	4X4 Access	Remote Worksite
Falling Ops	Size	Wind	Slope	Danger Trees/ Ha	Timber Type	Safe Work Distances
Danger Trees	High BUI	Overhead Hazards	Mechanical Damage		Other	Other

REMEMBER TO REASSESS **HAZARDS** DAILY AS CONDITIONS AND ASSIGNMENTS CHANGE
 PROVIDE UPDATED COORDINATES FOR MEDIC LOCATIONS, SAFETY ZONES AND HELIPADS
 SHARE YOUR LESSONS FROM NEAR MISSES, INJURIES AND SUCCESSFUL OPERATIONS

PLEASE EMAIL DIV ASSIGNMENTS TO FireK20637PL@gov.bc.ca BEFORE 15:00

Division Assignment List

Branch:	East	Division:	s.15			
Incident Number:	K20637	Operational Period:	0700-1900			
OPERATIONS PERSONNEL						
Ops Chief	s.22	Ops Branch Director	s.22			
Division Sup		HLCO				
RESOURCE ASSIGNMENTS						
Strike Team Task Force	Leader	Call Sign	Start Time	Back to Camp	Specific Crew Instruction	
s.15	s.22	s.15	0700	2000		
			0700	1900		
CONTROL OBJECTIVES						
<ul style="list-style-type: none"> Complete containment and mop up on hot spot discovered Aug. 8th. 						
HAZARD ASSESSMENT						
Weather	Slope	Unstable Rock	Powerlines	Radio Dead Zones	H2S	Heavy Equipment
Traffic	Heli Pad	Hover Exit	Air Tanker	Long Line & Bucketing	4X4 Access	Remote Worksite
Falling Ops	Size	Wind	Slope	Danger Trees/ Ha	Timber Type	Safe Work Distances
Danger Trees	High BUI	Overhead Hazards	Mechanical Damage		Other	Other
Hazard: Fireline Hazards			Control Measure: (Refer to OSWS, BC Faller Safety Info Flips, DTA Manual and SOP's to control hazards checked above)			

REMEMBER TO REASSESS **HAZARDS** DAILY AS CONDITIONS AND ASSIGNMENTS CHANGE
 PROVIDE UPDATED COORDINATES FOR MEDIC LOCATIONS, SAFETY ZONES AND HELIPADS
 SHARE YOUR LESSONS FROM NEAR MISSES, INJURIES AND SUCCESSFUL OPERATIONS

PLEASE EMAIL DIV ASSIGNMENTS TO FireK20637PL@gov.bc.ca BEFORE 15:00

Division Assignment List						
Branch:	East	Division:	s.15			
Incident Number:	K20637	Operational Period:	0700-2000			
OPERATIONS PERSONNEL						
Ops Chief	s.22	Ops Branch Director	s.22			
STL		HLCO				
RESOURCE ASSIGNMENTS						
Strike Team Task Force	Leader	Call Sign	Start Time	Back to Camp	Specific Crew Instruction	
s.15	s.22	s.15	0700	2000		
CONTROL OBJECTIVES						
<ul style="list-style-type: none"> Monitor downslope growth towards s.22 Pinch out fire along creek 30 lengths of 1.5 inch hose to recover 						
HAZARD ASSESSMENT						
Weather	Slope	Unstable Rock	Powerlines	Radio Dead Zones	H2S	Heavy Equipment
Traffic	Heli Pad	Hover Exit	Air Tanker	Long Line & Bucketing	4X4 Access	Remote Worksite
Falling Ops	Size	Wind	Slope	Danger Trees/ Ha	Timber Type	Safe Work Distances
Danger Trees	High BUI	Overhead Hazards	Mechanical Damage		Other	Other
Hazard: Weather 4x4 access Remote Worksite			Control Measure: (Refer to OSWS, BC Faller Safety Info Flips, DTA Manual and SOP's to control hazards checked above) <ul style="list-style-type: none"> Drive appropriate to the dusty road conditions 			

REMEMBER TO REASSESS **HAZARDS** DAILY AS CONDITIONS AND ASSIGNMENTS CHANGE
PROVIDE UPDATED COORDINATES FOR MEDIC LOCATIONS, SAFETY ZONES AND HELIPADS
SHARE YOUR LESSONS FROM NEAR MISSES, INJURIES AND SUCCESSFUL OPERATIONS

PLEASE EMAIL DIV ASSIGNMENTS TO FireK20637PL@gov.bc.ca BEFORE 15:00

Division Assignment List						
Branch:	East	Division:	s.15			
Incident Number:	K20637	Operational Period:	0700-2000			
OPERATIONS PERSONNEL						
Ops Chief	s.22	Ops Branch Director	s.22			
Div Supervisor		HLCO				
RESOURCE ASSIGNMENTS						
Strike Team Task Force	Leader	Call Sign	Start Time	Back to Camp	Specific Crew Instruction	
s.15	s.22	s.15	0700	2000		
			0700	2000		
			0700	2000	s.15	
			0700	2000		
			0700	2000		
			0700	2000		
CONTROL OBJECTIVES						
<ul style="list-style-type: none"> Strengthen containment lines around spillover mop up to 100ft Heavy equipment containment line construction Plan for ignition operations to strengthen containment lines 						
HAZARD ASSESSMENT						
Weather	Slope	Unstable Rock	Powerlines	Radio Dead Zones	H2S	Heavy Equipment
Traffic	Heli Pad	Hover Exit	Air Tanker	Long Line & Bucketing	4X4 Access	Remote Worksite
Falling Ops	Size	Wind	Slope	Danger Trees/ Ha	Timber Type	Safe Work Distances
Danger Trees	High BUI	Overhead Hazards	Mechanical Damage		Other	Other
Hazard: Poor radio comms Repeater, Simplex and Fire Channel			Control Measure: (Refer to OSWS, BC Faller Safety Info Flips, DTA Manual and SOP's to control hazards checked above) Ensure Comms are adequate prior to commencing work.			

REMEMBER TO REASSESS HAZARDS DAILY AS CONDITIONS AND ASSIGNMENTS CHANGE
 PROVIDE UPDATED COORDINATES FOR MEDIC LOCATIONS, SAFETY ZONES AND HELIPADS
 SHARE YOUR LESSONS FROM NEAR MISSES, INJURIES AND SUCCESSFUL OPERATIONS

PLEASE EMAIL DIV ASSIGNMENTS TO FireK20637PL@gov.bc.ca BEFORE 15:00

Division Assignment List						
Branch:	East		Division:	s.15		
Incident Number:	K20637		Operational Period:	0700-2000		
OPERATIONS PERSONNEL						
Ops Chief	s.22		Ops Branch Director	s.22		
Div Supervisor			HLCO			
RESOURCE ASSIGNMENTS						
Strike Team Task Force	Leader	Call Sign	Start Time	Back to Camp	Specific Crew Instruction	
s.22		s.15	0700	2000	Please Check-in with Plans Cache Ck	
CONTROL OBJECTIVES						
<ul style="list-style-type: none"> Guard construction parallel to powerlines in the south of the division Develop containments lines north of the division 						
HAZARD ASSESSMENT						
Weather	Slope	Unstable Rock	Powerlines	Radio Dead Zones	H2S	Heavy Equipment
Traffic	Heli Pad	Hover Exit	Air Tanker	Long Line & Bucketing	4X4 Access	Remote Worksite
Falling Ops	Size	Wind	Slope	Danger Trees/ Ha	Timber Type	Safe Work Distances
Danger Trees	High BUI	Overhead Hazards	Mechanical Damage		Other	Other Extreme Fire Behavior
Hazard: Wind Fire Behaviour Slope			Control Measure: (Refer to OSWS, BC Faller Safety Info Flips, DTA Manual and SOP's to control hazards checked above) - Continuously monitor conditions - Back out or reposition if unsafe			

REMEMBER TO REASSESS **HAZARDS** DAILY AS CONDITIONS AND ASSIGNMENTS CHANGE
PROVIDE UPDATED COORDINATES FOR MEDIC LOCATIONS, SAFETY ZONES AND HELIPADS
SHARE YOUR LESSONS FROM NEAR MISSES, INJURIES AND SUCCESSFUL OPERATIONS

PLEASE EMAIL DIV ASSIGNMENTS TO FireK20637PL@gov.bc.ca BEFORE 15:00

Division Assignment List						
Branch:	East	Division:	s.15			
Incident Number:	K20637	Operational Period:	0700-2000			
OPERATIONS PERSONNEL						
Ops Chief	s.22	Ops Branch Director	s.22			
Div Supervisor		HLCO				
RESOURCE ASSIGNMENTS						
Strike Team Task Force	Leader	Call Sign	Start Time	Back to Camp	Specific Crew Instruction	
s.15	s.22	s.15	0700	2000		
		-	0700	2000		
		-	0700	2000		
		-	0700	2000		
		-	0700	2000		
CONTROL OBJECTIVES						
<ul style="list-style-type: none"> Continue to mop up containment lines and blackline to 50' Monitor and Lookout for Div S 						
HAZARD ASSESSMENT						
Weather	Slope	Unstable Rock	Powerlines	Radio Dead Zones	H2S	Heavy Equipment
Traffic	Heli Pad	Hover Exit	Air Tanker	Long Line & Bucketing	4X4 Access	Remote Worksite
Falling Ops	Size	Wind	Slope	Danger Trees/ Ha	Timber Type	Safe Work Distances
Danger Trees	High BUI	Overhead Hazards	Mechanical Damage		Other	Other
Hazard: Communication Dead zones Slope			Control Measure: (Refer to OSWS, BC Faller Safety Info Flips, DTA Manual and SOP's to control hazards checked above) - Back out or reposition if unsafe - Watch for rolling rocks and slippery terrain. Don't work upslope of other personnel. - Ensure DTA complete and documented			

REMEMBER TO REASSESS **HAZARDS** DAILY AS CONDITIONS AND ASSIGNMENTS CHANGE
 PROVIDE UPDATED COORDINATES FOR MEDIC LOCATIONS, SAFETY ZONES AND HELIPADS
 SHARE YOUR LESSONS FROM NEAR MISSES, INJURIES AND SUCCESSFUL OPERATIONS

PLEASE EMAIL DIV ASSIGNMENTS TO FireK20637PL@gov.bc.ca BEFORE 15:00

Division Assignment List						
Branch:	East	Division:	s.15			
Incident Number:	K20637	Operational Period:	0700-2000			
OPERATIONS PERSONNEL						
Deputy Ops	s.22	Ops Branch Director	s.22			
Div Supervisor		HLCO				
RESOURCE ASSIGNMENTS						
Strike Team Task Force	Leader	Call Sign	Start Time	Back to Camp	Specific Crew Instruction	
s.15		s.15	0700	2000		
CONTROL OBJECTIVES						
<ul style="list-style-type: none"> Continue containment line construction with equipment strike team in preparation for ignition operations. Monitor and act as lookout by s.15 						
HAZARD ASSESSMENT						
Weather	Slope	Unstable Rock	Powerlines	Radio Dead Zones	H2S	Heavy Equipment
Traffic	Heli Pad	Hover Exit	Air Tanker	Long Line & Bucketing	4X4 Access	Remote Worksite
Falling Ops	Size	Wind	Slope	Danger Trees/ Ha	Timber Type	Safe Work Distances
Danger Trees	High BUI	Overhead Hazards	Mechanical Damage		Other	Other
Hazard: Fire Behaviour Remote worksite			Control Measure: (Refer to OSWS, BC Faller Safety Info Flips, DTA Manual and SOP's to control hazards checked above) Monitor and lookout by Div R			

REMEMBER TO REASSESS HAZARDS DAILY AS CONDITIONS AND ASSIGNMENTS CHANGE
 PROVIDE UPDATED COORDINATES FOR MEDIC LOCATIONS, SAFETY ZONES AND HELIPADS
 SHARE YOUR LESSONS FROM NEAR MISSES, INJURIES AND SUCCESSFUL OPERATIONS

PLEASE EMAIL DIV ASSIGNMENTS TO FireK20637PL@gov.bc.ca BEFORE 15:00

Division Assignment List						
Branch:	Equipment		Division:		As required	
Incident Number:	K20637		Operational Period:		0700-2000	
OPERATIONS PERSONNEL						
Ops Chief	s.22		Air Branch Director		s.22	
Equip. Br Director			HLCO			
RESOURCE ASSIGNMENTS						
Strike Team Task Force	Leader	Call Sign	Start Time	Back to Camp	Specific Crew Instruction	
See Org chart for equipment task forces and strike teams Assignments will be provided by Equipment Group Supervisors						
CONTROL OBJECTIVES						
<ul style="list-style-type: none"> • Work with Division and Branch to coordinate equipment needs. Establish control and contingency lines with heavy equipment. • Utilize heavy equipment to aid with danger tree falling as required. • Support crew with heavy equipment needs. • Ensure line locators have communications with equipment and crews. • Lowbed equipment to staging for next assignment. 						
HAZARD ASSESSMENT						
Weather	Slope	Unstable Rock	Powerlines	Radio Dead Zones	H2S	Heavy Equipment
Traffic	Heli Pad	Hover Exit	Air Tanker	Long Line & Bucketing	4X4 Access	Remote Worksite
Falling Ops	Size	Wind	Slope	Danger Trees/ Ha	Timber Type	Safe Work Distance
Danger Trees	High BUI	Overhead Hazards	Mechanical Damage		Other	Other
Hazard: Remote Worksite Lack of wildfire knowledge for some operators			Control Measure: Ensure L.A.C.E.S. Tie experienced staff to work with equipment			

REMEMBER TO REASSESS HAZARDS DAILY AS CONDITIONS AND ASSIGNMENTS CHANGE
 PROVIDE UPDATED COORDINATES FOR MEDIC LOCATIONS, SAFETY ZONES AND HELIPADS
 SHARE YOUR LESSONS FROM NEAR MISSES, INJURIES AND SUCCESSFUL OPERATIONS

PLEASE EMAIL DIV ASSIGNMENTS TO FireK20637PL@gov.bc.ca BEFORE 15:00

Division Assignment List						
Branch:	Night Ops	Division:	As Required			
Incident Number:	K20637	Operational Period:	2000-0800			
OPERATIONS PERSONNEL						
Ops Chief	s.22	Night Ops	s.22			
Div Sup		HLCO				
RESOURCE ASSIGNMENTS						
Strike Team Task Force	Leader	Call Sign	Start Time	Back to Camp	Specific Crew Instruction	
s.15	s.22	s.15	2000	0800	Cache Creek	
			2000	0800	Cariboo	
			2000	0800	s.22	
			2000	0800	Loon	
			2000	0800		
			2000	0800		
			2000	0800	Veasey	
			2000	0800	North	
CONTROL OBJECTIVES						
<ul style="list-style-type: none"> Protection of life and property Build guard/patrol Limited mop up 						
HAZARD ASSESSMENT						
Weather	Slope	Unstable Rock	Powerlines	Radio Dead Zones	H2S	Heavy Equipment
Traffic	Heli Pad	Hover Exit	Air Tanker	Long Line & Bucketing	4X4 Access	Remote Worksite
Falling Ops	Size	Wind	Slope	Danger Trees/ Ha	Timber Type	Safe Work Distances
Danger Trees	High BUI	Overhead Hazards	Mechanical Damage		Other	Other
Hazard:			Control Measure:			

REMEMBER TO REASSESS **HAZARDS** DAILY AS CONDITIONS AND ASSIGNMENTS CHANGE
 PROVIDE UPDATED COORDINATES FOR MEDIC LOCATIONS, SAFETY ZONES AND HELIPADS
 SHARE YOUR LESSONS FROM NEAR MISSES, INJURIES AND SUCCESSFUL OPERATIONS

PLEASE EMAIL DIV ASSIGNMENTS TO FireK20637PL@gov.bc.ca BEFORE 15:00

Division Assignment List						
Branch:	Ignition	Division:	As Required			
Incident Number:	K20637	Operational Period:	0700-2000			
OPERATIONS PERSONNEL						
Ops Chief	s.22	Ignition Specialist	s.22			
Div Sup		HLCO				
RESOURCE ASSIGNMENTS						
Strike Team Task Force	Leader	Call Sign	Start Time	Back to Camp	Specific Crew Instruction	
s.15	s.22	s.15	0700	2000		
			0700	2000		
			0700	2000		
			0700	2000		
CONTROL OBJECTIVES						
<ul style="list-style-type: none"> Prepare for ignition operations to protect values in Clinton, West Fraser Mill, 70 Mile and critical infrastructure 						
HAZARD ASSESSMENT						
Weather	Slope	Unstable Rock	Powerlines	Radio Dead Zones	H2S	Heavy Equipment
Traffic	Heli Pad	Hover Exit	Air Tanker	Long Line & Bucketing	4X4 Access	Remote Worksite
Falling Ops	Size	Wind	Slope	Danger Trees/ Ha	Timber Type	Safe Work Distances
Danger Trees	High BUI	Overhead Hazards	Mechanical Damage		Other	Other

REMEMBER TO REASSESS HAZARDS DAILY AS CONDITIONS AND ASSIGNMENTS CHANGE
 PROVIDE UPDATED COORDINATES FOR MEDIC LOCATIONS, SAFETY ZONES AND HELIPADS
 SHARE YOUR LESSONS FROM NEAR MISSES, INJURIES AND SUCCESSFUL OPERATIONS

PLEASE EMAIL DIV ASSIGNMENTS TO FireK20637PL@gov.bc.ca BEFORE 15:00

Division Assignment List					
Branch:	SPS	Division:	s.15		
Incident Number:	K20637	Operational Period:	24 hrs		
OPERATIONS PERSONNEL					
Ops Chief	s.22	Ops Branch Director	s.22		
Div. Sup		HELCO			
RESOURCE ASSIGNMENTS					
Strike Team Task Force	Leader	Radio	Start Time	Back to Camp	Specific Crew Instruction
s.15	s.22	s.15	0600	2200	Time sheets & Check In/ Out
		-	0600	2200	Time sheets & Check In/ Out
		-	0600	2200	Time sheets & Check In/ Out
		-	0600	2200	Time sheets & Check In/ Out
		-	0600	2200	Time sheets & Check In/ Out
		-	0600	2200	Time sheets & Check In/ Out
		-	1800	0900	Time sheets & Check In/ Out
		-	0700	1900	Time sheets & Check In/ Out
		-	0700	1900	Time sheets & Check In/ Out
		-	0700	1900	Time sheets & Check In/ Out
		-	0700	1900	Time sheets & Check In/ Out
		-	0700	1900	Time sheets & Check In/ Out
		-	0700	1900	Time sheets & Check In/ Out
		-	0700	1900	Time sheets & Check In/ Out
		-	1400	0200	Time sheets & Check In/ Out
		-	1900	0700	Time sheets & Check In/ Out
		-	1900	0700	Time sheets & Check In/ Out
		-	1900	0700	Time sheets & Check In/ Out
CONTROL OBJECTIVES					
<ul style="list-style-type: none"> Values protection utilizing sprinklers systems Urban values protection utilizing fire departments apparatus Support wildfire operations with water delivery 					

HAZARD ASSESSMENT						
Weather X	Slope	Unstable Rock X	Powerlines X	Radio Dead Zones X	H2S	Heavy Equipment
Traffic	Heli Pad	Hover Exit	Air Tanker X	Long Line & Bucketing	4X4 Access	Remote Worksite X
Falling Ops	Size	Wind	Slope	Danger Trees/ Ha	Timber Type	Safe Work Distances
Danger Trees X	High BUI	Overhead Hazards X	Mechanical Damage		Other	Other
Hazard: Communication Challenges Geographically a vast working area Danger trees & instable rock Smoke particulate			Control Measure: White tone 5 - North Operations Purple tone 5 - South Operations Identify Cell Hotspots Personnel accountability and Check in's Request DTA and notify crews of fall hazards Particulate mask available at ICP			

AIR OPERATIONS SUMMARY						
Remarks: (safety, hazards etc)		Medivac		NOTAM Information		
Please submit helipad inspection forms with co-ordinates for all classes of helipads to Air Branch.		Intermediate OGJ & SHC or any available Medium.		Formal NOTAM in place NOTAM in place August 4th- August 17th.		
	Skids Up:		Skids Down:			
Kamloops	05:05	Kamloops	20:37			
100 Mile	05:43	100 Mile	20:46			
AIR BRANCH PERSONNEL						
Position	Name	Call Sign	Frequencies	AM	FM	Remarks
Air Branch	s.22	s.15				s.22
ASGS						
Deputy Air Branch						
HLCO						
HLCO						
HLCO (t)						
HLCO						
HEB						
HEB						
HEB						
HEB						
Bowser						
Bowser						
Bowser						
Bowser						
AIR ASSIGNMENTS						
Reg	Model	Start	End	Assignment	Pilot	Remarks
Cache Creek						
CGHHG	206B	0900	2100	HLCO	s.22	
CFFCE	350B2	0830	2030	Ignitions		
CGSLI	212	0830	2030	Bucket Support		
CGSLH	212	0830	2030	Bucket Support		
CFCK	412 SP	0830	2030	Bucket Support		
CFBBT	214	0830	2030	Bucket Support		
CFZVT	214	0830	2030	Bucket Support		
CGJQN	S-61	0800	1400	Bucket Support		
CGJQN	S-61	1400	2100	Bucket Support		
CGSCH	350B2	0900	2100	Admin		
GWWL	212	0900	2100	Rappel/Tank		

Clinton				
CGHQW	206B	0930	2100	Ignition
CFZHK	206B	0930	2100	Ignition
COGJ	350B2	0830	2030	Admin / Ops / Div
CGOHK	350BA	0830	2030	HLCO
CGBSF	212	0930	2100	Bucket Support
CFAHL	212	0930	2100	Bucket Support
CFOHK	212	0930	2100	Bucket Support
CFCAN	212	0930	2100	Bucket Support
CFAVY	407	0930	2100	Ignition
FHHU	350	0830	2030	Admin
Tanker 744	S64	0900	2100	Tank Support
Tanker 745	S64	0900	2100	Tank Support
FLCN	EC120	0800	2000	Admin
FWTQ	412	0900	2100	Tank
FCKX	350BA	0900	2100	HLCO

s.22

AIR COORDINATES LIST

PType	Latitude_DD	Longitude_DD	Status	Coord	Coord_List_Label	Coord_List_Order
Helispot (Label, e.g. H-1)	s.15		Current	Yes	s.15	102
Helispot (Label, e.g. H-1)			Current	Yes		103
Helispot (Label, e.g. H-1)			Current	Yes		104
Helispot (Label, e.g. H-1)			Current	Yes		105
Helispot (Label, e.g. H-1)			Current	Yes		106
Helispot (Label, e.g. H-1)			Current	Yes		107
Helispot (Label, e.g. H-1)			Current	Yes		111
Helispot (Label, e.g. H-1)			Current	Yes		112
Helispot (Label, e.g. H-1)			Current	Yes		113
Helispot (Label, e.g. H-1)			Current	Yes		114
Helispot (Label, e.g. H-1)			Current	Yes		115
Helibase			Current	Yes		150
MediVac Site			Current	Yes		151
Helibase			Current	Yes		152
First Aid Station			Current	Yes		200
First Aid Station			Current	Yes		201
First Aid Station			Current	Yes		202
Repeater			Current	Yes		300
Repeater			Current	Yes		301
Mobile Weather Station			Current	Yes		303
Staging Area			Current	Yes		401
Staging Area			Current	Yes		402
Staging Area			Current	Yes		403
Staging Area			Current	Yes		404
Staging Area			Current	Yes		405
Staging Area			Current	Yes		406
Staging Area			Current	Yes		407
Staging Area			Current	Yes		408
Staging Area			Current	Yes		409
Staging Area			Current	Yes		410
Staging Area			Current	Yes		411
Staging Area			Current	Yes		412
Staging Area			Current	Yes		413
Staging Area			Current	Yes		414
Staging Area			Current	Yes		415
Staging Area			Current	Yes		416
Staging Area			Current	Yes		417
Staging Area			Current	Yes		418
Staging Area			Current	Yes		419
Structure			Current	Yes		700
Tower			Current	Yes		704
Other or Unassigned			Current	Yes		705

Operations Grid List

Location / Name	Grid Reference	Remarks
Cache Creek Camp Medic	M9	s.15
s.22 Medic & Stage	Q11	
Loon Lake Jct Medic	H18	
8 Mile Rd Medic (B)	I22	

Chasm FSR Medic	E31	s.15
Loon Lake Rd Medic	H18	
Cache Creek Airport/Medic	M8	
A1 Repeater	E22	
B1 Repeater	L20	
Rain Gauge #1	Q11	
Rain Gauge #2	I22	
Tower	Q23	
H1 Helispot & Stage	L7	
Esso Staging	M4	
Stage 1	K11	
Stage 2	L11	
Stage 3	M10	
Battle Creek Staging	S15	
Arrowstone E Staging	Q13	
Arrowstone W Staging	P12	
North Staging	K12	
Columbia Staging	R15	
Knife Lake Helispot & Stage	J26	
5.5k Stage	I25	
Mound Road Stage Medic (A)	E26	

s.15,s.22

s.15,s.22

s.15,s.22

s.15,s.22

s.15,s.22

s.15,s.22

s.15,s.22

s.15,s.22

s.15,s.22

s.15,s.22

FOR MORE SERIOUS INCIDENTS FILL OUT THE BCWS SAFETY- INCIDENT REPORT
PLEASE SUBMIT FORMS TO SAFETY OFFICER OR BCWS.LIBELK20637SD@gov.bc.ca

BC WILDFIRE SERVICE - SAFETY INCIDENT REPORT



Powered by Scanbot.com

Hazard / Near Miss

Use QR Code to download fillable PDF

Fire Centre			
Zone			
Fire Number			
Latitude			
Longitude			
Incident Type	<input type="checkbox"/> Animal <input type="checkbox"/> Aviation <input type="checkbox"/> Chainsaw	<input type="checkbox"/> Environmental <input type="checkbox"/> Fire Behaviour <input type="checkbox"/> Heavy Equipment	<input type="checkbox"/> Motor Vehicle <input type="checkbox"/> Other <input type="text"/>
Incident Severity	<input type="checkbox"/> Hazard	<input type="checkbox"/> Near Miss	<input type="checkbox"/> Minor Injury
Describe Safety Incident			
Reported BY			
Date			

K20637 (Elephant Hill Fire) Falling Plan

INCIDENT #: K20637	COORDINATOR S.22
UPDATED AUGUST 10, 2017	
EMERGENCY RESPONSE PLAN CONSIDERATIONS:	
<p>WHO IS YOUR FIRELINE SUPERVISOR?</p> <p>DID YOU RECEIVE A BRIEFING FOR THE DAY'S OBJECTIVES?</p> <p>WHAT ARE THE RADIO FREQUENCIES? – HAVE YOU DONE A RADIO CHECK?</p> <p>WHO IS YOUR DESIGNATED FIRST AID ATTENDANT? - WHERE IS THE FIRST AID EQUIPMENT?</p> <p>WHERE IS YOUR ACCESS/EGRESS? – YOUR ESCAPE ROUTES AND SAFETY ZONES?</p> <p>WHERE IS YOUR QUALIFIED ASSISTANCE (QA)?</p>	
FALLING OBJECTIVES:	
<p style="text-align: center;"><u>Primary:</u></p> <p>Falling to remove trees assessed as dangerous for workers conducting fire suppression operations.</p> <p style="text-align: center;"><u>Other:</u></p> <p>Falling trees to construct fuel free to meet fire control objectives. Falling trees to create heli-spots for access/egress, to meet operational objectives and/or medical evacuation. <i>(These specific projects should be communicated to the Falling Coordinator as they are planned).</i></p>	
FALLING HAZARDS:	
IF THERE IS <u>ANY</u> DOUBT – CREATE NO WORK ZONE AND NOTIFY SUPERVISOR	
<p>The high BUI's and steep terrain are presenting significant challenges. Continuous assessments and re-assessments are required. Trees are potentially more unstable than usual and falling difficulties will be encountered. Ensure your QA is available and appropriate for the work that you are doing. Timber types include Douglas Fir, Pine and Mixed Deciduous at lower elevations. The Drought Conditions are HIGH to EXTREME, combined with shallow anchoring soils in areas. Extra caution to be used on steep slopes. Strong winds increase potential of falling trees. Numerous Fir and Pine in various stages of stem damage and/or root decay can be found. Fallers are advised to carefully scan the canopy for overhead hazards when preparing to fall a tree.</p> <p>Be prepared to use your qualified assistance to deal with specific falling difficulties. (Refer to Section 26 of BC Faller Training Standard Info-Flips, limb-tied trees where one or both trees are danger trees; Section 27, multiple hang-ups) The faller is in charge when qualified assistance is within 2 tree lengths to help with the falling difficulty. Good planning and communication is critical.</p> <p>Slopes in excess of 45% are present on this fire. Know and use SWP's for upslope falling. (Info-Flip Section 24) Loose debris makes for insecure footing and rocks/logs are constantly rolling/sliding downslope.</p> <p>The faller <u>must</u> walk the entire area prior to falling and develop a falling plan that will control exposure to surrounding hazards. "Hot falling" means you have not assessed the area around the tree you are cutting. Hot falling is not permitted on BCWS work sites.</p> <p>Due to the varying timber types and terrain throughout the fire, there is no site specific wind threshold. Wind speed shut down criteria is left to the faller's discretion</p> <p>Large diameter Douglas Fir is common on this fire. Use caution when these trees are fire-damaged. When these trees exhibit stubby characteristics (i.e., large diameter but not tall), they require special falling techniques as described in the BC Faller Training Standard Info-Flips (Section 32). Deciduous trees (i.e.; Poplar, Trembling Aspen, Birch, Cottonwood) require a wide undercut (Pie or bird's-mouth) to minimize barberchair potential (Info-Flip Section 19). Fallers must be qualified to fall these trees (as determined by Branch Director under the advisement of the Falling Coordinator). Contract professional fallers are available to assist as required.</p>	

SUPERVISION AND PLANNING:

BCWS AND CONTRACT FALLERS ON THIS INCIDENT MUST RECOGNIZE THEIR PERSONAL LIMITATIONS IN ANY FALLING OR BUCKING SITUATION. THE SAME APPLIES WHEN FALLING THIN-SHELLED, BURNED-OUT TREES. THEY REQUIRE SPECIALTY TECHNIQUES THAT ARE NOT INCLUDED IN THE BC FALLER TRAINING STANDARD.

FALLERS WILL BE INSPECTED BY THE FALLING COORDINATOR OR BCWS TRAINER OR INSTRUCTOR TO ENSURE THEY ARE QUALIFIED FOR THE ASSIGNED FALLING WORK.

YOU ALWAYS HAVE ACCESS TO ALTERNATIVE MEANS FOR THE REMOVAL OF DANGEROUS TREES (IE, MACHINE ASSIST, FALLER-BUNCHER OR BLASTING)

YOU HAVE THE RIGHT AND RESPONSIBILITY TO REFUSE UNSAFE WORK.

All Falling activities need to be planned and conducted to ensure that:

- Fallers' man-check at least every 20-30 minutes, and are aware of the fire activity/situation access/egress and escape routes, **and** are not further than 10 min from assistance and medical aid.
- Faller(s) assess and control hazards prior to and continuously as they work.
- Fallers must face the hazard as much as possible while preparing to fall the dangerous tree
- **Qualified Assistance (QA) is available to assist in dealing with specific falling difficulties.**
- When there is no specific falling difficulty, there is no one with a minimum of 2 tree lengths
- Other workers in the area are aware of falling activities
- When using signage to control the falling area, the faller(s) call sign and frequency used to contact the faller(s) will be posted, **and** the faller controls the area so that other workers are not exposed to the hazard of falling trees.
- If brushing occurs, the standing tree must be assessed for stability or overhead hazards. These hazards must be removed or managed with a no work zone.
- Fallers will ensure that *all* trees they attempt to fall are completely on the ground. If a cut up/hung-up tree cannot be removed safely, they must mark the tree, mark off a no work zone, and communicate the hazard to the area supervisor, and any workers that may be exposed to the hazard.

DOCUMENTATION

FALLERS TO MARK STUMPS (as practical) WITH THEIR CALL SIGN

- The Incident Medical Operations plan must be reviewed, understood and available for reference.
- Ensure that you have an accurate 'grid' map for reference.
- The Field Safety Plan (**FSP**) can be used to identify unique hazards and control measures for the specific work location
- All certified fallers should have certification cards, log books and Info-Flips available onsite.
- BCWS fallers/buckers will have inspections documented every 5 days. If you need assistance to complete this, please give advanced notice to the Falling Coordinator or your crew supervisor.
- Supervisors must document objectives for any Faller(s) in Training (**FIT**) working under their supervision. These situations need to be specifically planned to provide clear limits based on the FIT's level of ability, identify qualified assistance, **and** the work is inspected daily by the supervisor and documented every 5 days. Pre-identify these circumstances to the Falling Coordinator for input and Approval

DANGER TREE PLAN FIRE K20637 – OPERATIONAL PERIOD Aug 10, 2017

Site Assessment Overview/Re-assessment Protocol

The main Fuel Type found on this fire is C-7, trees relatively resilient to fire. The B.U.I. values are 180, more than double the threshold for the fuel type, therefore we can expect burning in stems/roots to continue through the night. DAILY ASSESSMENTS are prudent to keep personnel safe from fire damaged trees.

There are areas in East Branch where beetle-killed pine are found mixed with immature spruce, often in tangled mess of jackpots. NWZ's can be the best form of risk management in these scenarios.

Terrain features include open hillsides and broad valleys conducive to frequent mod-strong wind conditions. Remember to re-assess your work site following a wind event significant enough to break branches and cause whole trees to swing. Always be especially aware of wind when working around Spruce due to their shallow root systems causing failure.

Expect Aspen stands on our work site, which require a careful assessment 360° around the stem, where often the main tree defects are found on the upper stem. See Appendix 6-2 in your Course Workbook for more on assessing Aspen.

Re-assessment is also required when LOD ratings go up due to a changed work activity.

Field Marking Protocol

Access/Egress/Escapes Trails: Pink Flagging

DTA : Orange flagging

DTF : Green flagging

No Work Zone : Yellow NWZ flagging

Danger Trees : Orange DT flagging

- ✓ NWZ's are marked on the map, with co-ordinates for large No Work Zones. No work zones must be well flagged in the field and easily identifiable from any direction.
- ✓ DTA flagging should have 5 pc's of info; date, call sign, LOD rating, start/stop, direction traveling along feature & width of assessed area.
- ✓ DTF flagging includes date, DTF's call sign, & "complete". Place DTF flagging only after the falling is complete. Also hang the green when "no danger trees identified"
- ✓ Co-ordinates must be included in paperwork, and don't need to be on flagging. There should always be green flagging with the orange in a completed area.

Documentation: Include your name and call sign. Use the FS 502 small form for points and the daily form for large lineal areas. Mark the area you completed with green on the DTA map, then write on your field card 'on map' and put your field card in the Danger tree box.

- **Remember to transfer the information onto the DTA MAP in the Ops Tent in camp.** We will be available in the evenings and mornings to help you do this.

You Help Us by completing your field cards, including marking the map. We help you by answering any questions you have and providing field training.

Sensitive Areas (Riparian, Powerlines, Structures and Private Property – in these areas, the DTA process is not the best fit. Contact your Danger Tree Specialists if you will be assessing in these areas.

Remember! The goal is to create a safe work environment for ourselves, as well as crews entering our work sites after we've left. Concise information on your flagging is a large part of achieving this goal.

s.22

Incident/fire No.

Recorded by

DATE

TIME

LOCATION

Or Coordinates

Elev.

TEMP.

% RH

WIND SPEED

WIND DIR.

WIND DIR.

24 Hr PRECIP.

% CLOUD COVER

COMMENTS (slope & aspect, observed fire behaviour*, fuel type, etc.)

Adjusted wind speed = recorded surface wind speed (10 minute avg.) multiplied by 1.5

Thanks for the readings!

*Detailed fire behaviour observations should be recorded on the S390C Fire Behaviour Observation Report and provided to your incident FBAN or Fire Centre Fire Behaviour Specialist.

Position	Last Name	First Name	Camp	Cell Phone #
IC	S.22		Clinton	S.22
Info Officer			Clinton	
Safety Officer			Clinton	
Safety Officer			Clinton	
Safety Officer			Clinton	
Range Liaison			Clinton	
Plans Section Chief			Clinton	
Plans Section Chief Trainee			Clinton	
Resource Unit Leader			Clinton	
Logs Section Chief			Clinton	
Logs Section Chief trainee			Clinton	
Food Unit Leader			Clinton	
Camp Manager			Clinton	
Finance Section Chief			Clinton	
Finance SC trainee			Clinton	
Ops Section Chief			Clinton	
Ops Section Chief Trainer			Clinton	
Ops Section Chief Trainee			Clinton	
FBAN			Clinton	
Ops Branch Dir East			Clinton	
Ignition Specialist Assist			Clinton	
DIV A			Clinton	
DIV C & D			Clinton	
DIV B			Clinton	
DIV E			Cache Creek	
DIV F			Clinton	
Ops Branch Dir North			Clinton	
Ops Branch Dir West			Clinton	
DIV R STL			Cache Creek	
DIV S TFL			Cache Creek	
DIV O			Cache Creek	
DIV Q STL			Cache Creek	
DIV N			Cache Creek	
DIV R			Cache Creek	
Ignition Specialist E Branch			Cache Creek	
TFL Q			Cache Creek	
TFL R1			Cache Creek	
Night OPS 637			Clinton	
Night OPS TFL			Clinton	
Falling Coordinator			Clinton	
DTS			Clinton	
Air Branch Director			Clinton	
Air Branch Director Trainee			Clinton	
Structural Branch Director			Clinton	
Equipment Branch Director			Clinton	
Structural Branch Director			Clinton	
Equip Grp Sup West			Clinton	
Equip Grp Sup North			Clinton	
Equipment Group Supply East			Clinton	
Equipment Assistant			Clinton	
Equipment Group Supply			Cache Creek	
Equipment Group Supply			Cache Creek	
Equipment Night Branch			Clinton	
Staging Manager			Clinton	
Staging Officer			Clinton	
Structural Specialist Sprinkler			Clinton	
Structural Specialist Sprinkler			Clinton	
Structural Specialist West			Clinton	
Structural Specialist Night			Clinton	
Structural Specialist			Clinton	

STL R	s.22	Cache Creek	s.22
DIV R TFL		Cache Creek	
TFL		Cache Creek	
Equip Grp Sup East		Cache Creek	
Quebec Agency Rep			
New Zealand A Rep		Clinton	

K20637 Fire Contact List

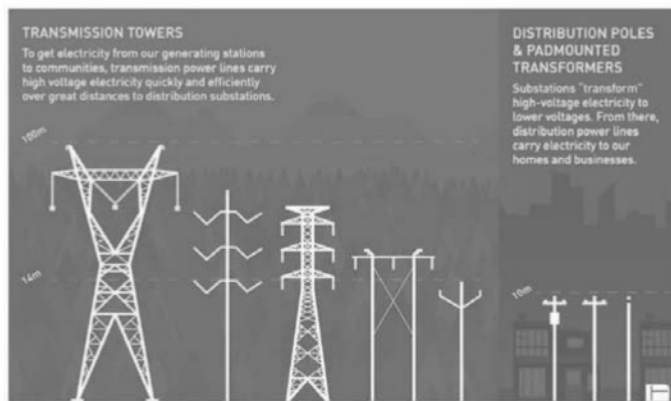
If you are looking for a number that is not on this list please call s.22

Safety Snapshot - Electricity

Crews often cannot tell if a downed power line is energized just by looking at it. There may be no sparks or movement. Even if the line is not live one moment, automatic switching equipment may restore power to the line without warning. Electricity can travel significant distances through water, smoke and the ground, injuring or killing workers.

Set up controls:

- Assume all lines are energized and keep your distance from fallen lines or lines that have trees on them.
- Crews must stay at least 10 metres (33 ft.) away from a fallen distribution power line.
- Crews must stay at least 32 metres (105 ft.) away from a fallen transmission line.
- Transmission lines have a bell-type insulator which helps in identifying them.
- Do not run hose parallel to transmission lines.
- When in doubt, contact BC Hydro.
- Always follow BC Hydro representatives' directions with respect to electricity.



East Branch Operations Priorities Summary

1. Bravo Division
 - a. Contain spot fire on North side of back Valley Rd and east of Battle Ck Rd using Cat guard and hose lines
2. Quebec Division
 - a. Contain spot fire on South side of Back Valley Rd and East of Battle creek Rd using cat guard and hose lines
3. Quebec Division
 - a. Plan and implement strategically located retardant lines from Stinky lake South to A1 Hwy
4. Oscar Division
 - a. Complete guard parallel to power lines in preparation for burning out operation when conditions and fire line location are suitable
5. Bravo Division
 - a. Line locate guard North from Battle Creek Rd to link to existing guard in Div. Mike
6. Division November
 - a. Continue to build large cat guard around outbreak in Northern part of division and then link guard into North Branch
7. Mike Division
 - a. Continue to monitor control lines
 - b. Complete guard construction in South of division
8. Oscar Division
 - a. Prepare and plan for back burning operation. Consult Ignition specialist
 - b. Conduct night time burn out operation when conditions are right.

BC Wildfire Service, Safety

Rapid Lesson Sharing Report Post/For Information

Kamloops Fire Centre - Kamloops Fire Zone

K20637 – Elephant Hill Fire

Narrative: Over the past few weeks, the Elephant Hill Fire has grown. With that, the amount of heavy equipment working on the fire has increased dramatically. During this time, extreme fire behaviour has presented a number of challenges and there have been issues identified pertaining to the safety of equipment operators. These issues have been brought to light through withdrawals, evacuations, and reported close calls that have occurred, as well as a parked excavator being burnt overnight.

Date of Events: July and August 2017

Lessons: Contractors operating equipment bring a unique skillset to the fireline and they are an important part of the team on large wildfires. As the prime contractor responsible for the safety of all personnel on these worksites, BC Wildfire Service must make every effort to ensure the safety of equipment operators. It should be understood that many operators may not be knowledgeable about wildfires. Because of this, we must take extra precautions when working with equipment.

Supervision

Heavy equipment must not be sent off unsupervised into fires. A chain of command must be in place and operators must know who their supervisor on the fire is. Supervising equipment is no different than supervising any other resources on the fire and span of control must be adequate. Some important responsibilities include:

- Ensuring operators are qualified to perform their tasks,
- Assessing the comfort level of operators,
- Regularly checking in on operators to ensure safe work practices are being met and guard construction is occurring as planned,
- Providing for all of the elements of LACES, and
- Monitoring operator fatigue. During large project fires, operators may get pushed to the limit and sometimes their duty days, shift changes, and hours can get lost in the shuffle.

Operational Periods and Tactics

During periods of extreme fire behaviour, guard construction with equipment will face many challenges. Using heavy equipment to build line during the heat of the day often proves to be ineffective and dangerous. It's important that supervisors plan equipment operating periods to coincide with the expected fire behaviour. This may mean that equipment operators need to start their shifts earlier in the day or work at night. This also means that tactics involving heavy equipment must be adjusted. Direct attack must not be employed. Equipment working during these burning conditions can often only safely work on the construction of contingency guards well away from the fire.

Lookouts

While equipment operators may have helicopters flying over their location periodically, that does not constitute a lookout. Operators must have a qualified person monitoring their location on the ground. This person must have knowledge of fire behaviour and understand how it affects operator safety. The use of "spotters" has proven to be successful strategy in meeting the requirement for lookouts. This involves designating a qualified individual the task of monitoring the position of a piece or group of equipment and keeping them informed as the fire situation changes.

Anchor Points

All machinery must begin work from a solid anchor point. Anchor points should be a barrier to fire spread that will prevent the fire from outflanking working heavy equipment. This is an area that machines can quickly return to if fire

Published Date: 2017-08-06

BC Wildfire Service, Safety

activity increases. As equipment builds line and stretches farther away from this anchor point, new ones must be located and safety zones must be constructed in conjunction with building line.

Communications

Communications are integral when working with heavy equipment. Operators must have a constant line of communication with qualified supervision during their time working on a wildfire. The first element of communication is all heavy equipment operators being involved in initial daily safety briefings. Some of the key items that must be covered at briefings include: outline safety procedures (e.g. hazards), operational objectives, emergency procedures, expected weather and fire behaviour, shift start and stop times, reporting relationships, and LACES. Operators should be involved in daily debriefings as well.

Information flow doesn't stop after the initial briefing. A continuous information flow must be kept (e.g. updates on weather, fire behavior, work progress, changes in strategy/tactics, arrival of additional resources, etc.) and operators must be immediately informed if the fire is threatening their position. In order to achieve effective communications, operators must be contactable via radio. If operators do not have a radio, or they are lacking the correct frequencies, a radio must be provided. If a radio cannot be provided, then operators must be directly supervised. Check-in procedures, which must establish check-in frequencies and contacts, must also be established.

Escape Routes

There should always be two escape routes for fireline personnel. These escape routes must be known to all fireline personnel and they should be scouted and timed. Equipment operators face a unique challenge when it comes to escape routes, as they are often working in situations where their only escape route is the way they came in. Escape routes for operators must be reassessed regularly as distances change. Plans involving escape routes should have identified trigger points (e.g. when the fire reaches a certain location, equipment will begin walking out). When setting trigger points, it is important to remember that equipment moves slower than most other resources on the fire.

Safety Zones

As mentioned above, heavy equipment moves slowly. Safety zones must be established regularly for equipment in the event that they are required to pull out. Safety zones must be large enough to protect operators from radiant heat, free of hazards, and close enough to reach. Information pertaining to safety zones must be communicated to operators, including:

- How often safety zones will be constructed (i.e. distance apart),
- How large safety zones must be, and
- Where safety zones should be placed (i.e. use of natural features).



Overnight Parking

While not a safety zone, overnight equipment parking areas are an important element that mustn't be overlooked. Machines parking overnight should be done so in a safe and open area, preferably on bare ground. An area should be cleared if one does not exist. Equipment should be parking away from the edge of the parking area outside the striking distance of all timber.

Submitted by: S.22 K20637 Safety Officer

Published Date: 2017-08-06

s.15,s.22

Incident Action Plan

K20637

August 11, 2017



Message of the Day

"Coming together is a beginning, staying together is progress, and working together is success." – Henry Ford

Please turn in your GIS data and photos into Plans.


s.22

Prepared by s.22

Plans Section Chief _____ s.22

Approved for implementation by s.22

Incident Commande _____

INCIDENT OBJECTIVES	K20637	Date & Time Completed:	August 10, 2017 at 21:00
Operational Period	August 11, 2017 0700hrs to 2000hrs		
GENERAL OBJECTIVES (Detailed objectives in Div Assignments)			
Command	<ul style="list-style-type: none"> • Provide for the safety of all responders - and ensure safe operations. • Prioritize use of resources. • Liaise with outside partners. 		
Operations	<ul style="list-style-type: none"> • Values protection in Clinton, West Fraser Mill and 70 Mile. • Seek opportunities for burn operations. • Allocation of resources as required. 		
Plans	<ul style="list-style-type: none"> • Daily IAP for distribution before morning shift start. • Resource tracking, documentation, fire mapping. • Contingency planning. 		
Logistics	<ul style="list-style-type: none"> • Processing fire orders. • Filling Resource Requests. 		
Finance	<ul style="list-style-type: none"> • Process daily time slips. • Track and report daily/total costs. • Ensure agreements / contracts are in place. 		
SAFETY MESSAGE			
SAFETY MESSAGE			
<p>Assessing for workplace hazards is an ongoing, continuous process. As firefighters enter new areas supervisors are responsible for ensuring they are not knowingly exposing people to hazards. Part of this hazard assessment includes 5 Step Danger Tree Process.</p> <p>STEP 1 Conduct Site Assessment Overview STEP 2 Determine Type of Work Activity and associated Level of Ground or Tree Disturbance STEP 3 Conduct Tree Assessment. STEP 4 Make Appropriate Safety / Management Decision. STEP 5 Provide Documentation and Communicate Safe Work Procedures</p> <div style="display: flex; align-items: center;">  <div style="margin-left: 20px;"> <p>Orange is for areas that have been DTA'd</p> <p>Yellow is for NWZ</p> <p>Green is for areas that have been assessed & felled (DTF)</p> </div> </div> <p>It is essential that workers know;</p> <ul style="list-style-type: none"> • what areas have been assessed and; • that the appropriate safety procedures have been implemented • If workers DO NOT see markings in the field, they cannot assume the area has been assessed. 			

[illegible]

Medical Ops Plan	Fire Number K20637	Operational Period:	0700hrs to 2000hrs				
MEDICAL AID STATION Call Sign	LOCATION	Radio Freq.	Start Times	Paramedics			
				Yes	No		
Cache Creek Camp Medic	Cache Creek Camp (day & night)	s.15	24hr		X		
Hihium Lake Medic	Hihium Lake (day)		24hr		X		
Mound Road Medic	Fenton Road/Mound Road Junction (day)		0700		X		
Two Flags Medic	Two Flags Helispot (day)		0700		X		
Battle Creek Medic	Battle Creek FSR/Bac Valley Road Junction (day)		0700		X		
Clinton Camp Medic	Clinton Camp (day & night)		0700		X		
Chasm FSR Medic	Chasm FSR (day)		0700		X		
Loon Lake Road Medic	Loon Lake Road (night)		2000		X		
Night Ops Medic	Caldan First Aid		2000		X		
Medics must record the name of their company, as well as the crew/employer of the patient on all First Aid Records.							
Level III Fireline First Aid							
<ul style="list-style-type: none"> Crew level III first aid attendants will be designated daily and will render initial first aid. 							
HOSPITALS							
Name	Address	Travel Time		Phone	Helipad?	Burn Unit?	
		Air	Ground		Yes	No	Yes
					No		No
Royal Inland Hospital	311 Columbia Ave, Kamloops	30min	75min	250-374-5111	X		X
100 Mile District General Hospital	555 Cedar Avenue South, 100 Mile House		47min	250-395-7600		X	X
Ashcroft Hospital (18:00 Friday to 08:00 on Monday)	700 Ash-Cache Creek Hwy, Ashcroft		36min	250-453-2211		X	X
TRANSPORTATION							
Name	Call Sign	Phone	Paramedics				
			Yes	No			
BC Ambulance*		911	X				
Air Medivac	s.15			X			
* BC Ambulance not available in Clinton.							
MEDICAL PROCEDURES							
<p>All injuries are to be reported to the supervisor immediately. Medic, Safety Officer, and Fire Centre will be notified by the supervisor.</p> <ul style="list-style-type: none"> Crew first aid attendant will assess the injury and treat. First Aid attendant will notify the Medic and determine the level of treatment required. First Aid Attendant or Medic in charge of the patient will determine the method of transport and the transport location. Requests for transport will be made through the supervisor. Supervisor will ensure that necessary documents are completed and turned in to the Safety Officer. <p>AIR MEDIVAC PROCEDURES: SERIOUS INJURIES</p> <ul style="list-style-type: none"> Requests for air medivac will be made through the Division Supervisor to KFC Dispatch. Dispatch will coordinate BC Ambulance Service (BCAS) response. Appropriate aircraft will be designated for medivac by AOB. First Aid Attendant in charge will determine the destination in consultation with Dispatch: ambulance or hospital. BCAS may change the destination or rendezvous en route. <p>GROUND TRANSPORT PROCEDURES: MINOR INJURIES</p> <ul style="list-style-type: none"> First Aid Attendant in charge will render First Aid and determine that ground transport is adequate. Patient is either released or transported by vehicle to ambulance or hospital. Patient transfer to ambulance will occur as soon as possible. Other minor injuries will be directed to the hospital as required. <p>Note: In most cases, BCAS will be unable to travel off paved roads to complete patient transfers.</p>							
BRANCH DIRECTORS! Update Plans Section if Medic locations change.							

DIVISION ASSIGNMENT LIST	1. Branch: West	2. Division: s.15				
3. Incident Name: K20637	4. Operational Period August 11, 2017	5. Time: 0700-2000				
Operations Personnel:						
Ops Chief	s.22	Ops Branch Director				
Div Sup		HLCO				
Resources Assigned to this Period						
Strike Team / Task Force	Leader	Crew #'s	Last Day on Fireline	Start Time	Back to Camp	Specific Crew Instructions
s.15	s.22	4		0700	1900	Move bubble
		1		0700	2000	DTA/DTF
		1		0700	2000	DTA/DTF
		TBD		0700	2000	Patrol Loon lk road for hot spots
		5		0700	2000	Collect excess gear from line
		1		0700	2000	Collect excess gear from line

6. Control Objectives
<ul style="list-style-type: none"> • Complete burn ops as required • Mop up 50 ft around bubbles and along road • Patrol structures for hotspots (extinguish if any found) • Demob unused gear and return to warehouse • Maintain sprinkler lines to houses and bubble sprinklers
7. Special Instructions
<ul style="list-style-type: none"> • PLEASE EMAIL DIV ASSIGNMENTS TO FireK20637PL@gov.bc.ca BEFORE 14:00

DIVISION ASSIGNMENT LIST		1. Branch: West	2. Division: s.15			
3. Incident Name: K20637		4. Operational Period August 11, 2017	5. Time: 0700-2000			
Operations Personnel:						
Ops Chief s.22		Ops Branch Director s.22				
Div Sup		HLCO				
Resources Assigned to this Period						
Strike Team / Task Force	Leader	Crew #'s	Last Day on Fireline	Start Time	Back to Camp	Specific Crew Instructions
s.15	s.22	20		0700	2000	
		1		0700	1900	
		20		0700	2000	
6. Control Objectives						
<ul style="list-style-type: none"> Mop up and patrol s.22 Mop up and patrol powerline track onto dozer guard Looking for burning opportunities at the southern end of Veasey road Contain fire to the western dozer guard if created by night shift 						
7. Special Instructions						
<ul style="list-style-type: none"> PLEASE EMAIL DIV ASSIGNMENTS TO FireK20637PL@gov.bc.ca BEFORE 14:00 						

DIVISION ASSIGNMENT LIST		1. Branch: West	2. Division: s.15			
3. Incident Name: K20637		4. Operational Period August 11, 2017	5. Time: 0700-2000			
Operations Personnel:						
Ops Chief s.22		Ops Branch Director s.22				
Div Sup		HLCO				
Resources Assigned to this Period						
Strike Team / Task Force	Leader	Crew #'s	Last Day on Fireline	Start Time	Back to Camp	Specific Crew Instructions
s.15	s.22	1		0700	2000	
		5		0700	1900	
		2		0700	2000	
		5		0700	1900	
		4		0700	2000	
		1		0700	1900	
		5		1900	0700	
6. Control Objectives						
<ul style="list-style-type: none"> Support ignition operations above Skookum Patrol hoses and guard Mop up - Support structure protection 						
7. Special Instructions						
<ul style="list-style-type: none"> PLEASE EMAIL DIV ASSIGNMENTS TO FireK20637PL@gov.bc.ca BEFORE 14:00 						

DIVISION ASSIGNMENT LIST		1. Branch: West		2. Division: s.15		
3. Incident Name: K20637		4. Operational Period August 11, 2017		5. Time: 0700-2000		
Operations Personnel:						
Ops Chief		s.22		Ops Branch Director		
Div Sup				HLCO		
Resources Assigned to this Period						
Strike Team / Task Force	Leader	Crew #'s	Last Day on Fireline	Start Time	Back to Camp	Specific Crew Instructions
s.15	s.22	5		0700	1900	
6. Control Objectives						
<ul style="list-style-type: none"> Continue mop up Move crews if required Recover and recycle equipment if required Monitor values where needed 						
7. Special Instructions						
<ul style="list-style-type: none"> PLEASE EMAIL DIV ASSIGNMENTS TO FireK20637PL@gov.bc.ca BEFORE 14:00 						

DIVISION ASSIGNMENT LIST		1. Branch: North		2. Division: s.15		
3. Incident Name: K20637		4. Operational Period August 11, 2017		5. Time: 0700-2000		
Operations Personnel:						
Ops Chief		s.22		North Branch Director		
Div Sup				HLCO		
Resources Assigned to this Period						
Strike Team / Task Force	Leader	Crew #'s	Last Day on Fireline	Start Time	Back to Camp	Specific Crew Instructions
s.15	s.22	3		0700	1930	
		20		0700	1930	s.15
		5		0700	1930	
		5		0700	1930	
6. Control Objectives						
<ul style="list-style-type: none"> Wetline 20ft along perimeter Extinguish hotspots from scan Recover and recycle equipment if required 						
7. Special Instructions						
<ul style="list-style-type: none"> PLEASE EMAIL DIV ASSIGNMENTS TO FireK20637PL@gov.bc.ca BEFORE 14:00 						

DIVISION ASSIGNMENT LIST		1. Branch: North		2. Division: s.15		
3. Incident Name: K20637		4. Operational Period August 11, 2017		5. Time: 0700-2000		
Operations Personnel:						
Ops Chief	s.22	North Branch Director		s.22		
Div Sup		HLCO				
Resources Assigned to this Period						
Strike Team / Task Force	Leader	Crew #s	Last Day on Fireline	Start Time	Back to Camp	Specific Crew Instructions
s.15	s.22	20		0700	2000	s.15
		18	August 18	0700	1930	
		5		0700	1930	
		5		0700	1930	
6. Control Objectives						
<ul style="list-style-type: none"> Build dozer line to east Mop up 20ft fire perimeter DTA/DTF as required (for Div Echo too) 						
7. Special Instructions						
<ul style="list-style-type: none"> PLEASE EMAIL DIV ASSIGNMENTS TO FireK20637PL@gov.bc.ca BEFORE 14:00 						

DIVISION ASSIGNMENT LIST		1. Branch: East		2. Division: s.15		
3. Incident Name: K20637		4. Operational Period August 11, 2017		5. Time: 0700-2000		
Operations Personnel:						
Ops Chief	s.22	East Branch Director		s.22		
Div Sup		HLCO				
Resources Assigned to this Period						
Strike Team / Task Force	Leader	Crew #s	Last Day on Fireline	Start Time	Back to Camp	Specific Crew Instructions
s.15	s.22	20	Aug 24	0700	2000	
		5	Aug 22	0700	2000	
		5	Aug 22	0700	2000	
		1	August 22	0700	2000	
		1	August 22	0700	2000	
		18		0700	2000	
		5	August 22	0700	1900	
6. Control Objectives						
<ul style="list-style-type: none"> Complete containment and mop up on hot spot discovered Aug. 8th. 						
7. Special Instructions						
<ul style="list-style-type: none"> PLEASE EMAIL DIV ASSIGNMENTS TO FireK20637PL@gov.bc.ca BEFORE 14:00 All hand lighting needs to be approved by Div Sup. 						

DIVISION ASSIGNMENT LIST	1. Branch: East	2. Division: s.15
3. Incident Name: K20637	4. Operational Period August 11, 2017	5. Time: 0700-2000

Operations Personnel:

Ops Chief	s.22	East Branch Director	s.22
Div Sup		HLCO	

Resources Assigned to this Period

Strike Team / Task Force	Leader	Crew #'s	Last Day on Fireline	Start Time	Back to Camp	Specific Crew Instructions
s.15	s.22	5		0700	2000	

6. Control Objectives

- Monitor downslope growth towards s.22
- Pinch out fire along creek
- 30 lengths of 1.5 inch hose to recover

7. Special Instructions

- PLEASE EMAIL DIV ASSIGNMENTS TO FireK20637PL@gov.bc.ca BEFORE 14:00
- All hand lighting needs to be approved by Div Sup

DIVISION ASSIGNMENT LIST	1. Branch: East	2. Division: s.15
3. Incident Name: K20637	4. Operational Period August 11, 2017	5. Time: 0700-2000
Operations Personnel:		
Ops Chief	s.22	East Branch Director s.22
Div Sup		HLCO

Resources Assigned to this Period

Strike Team / Task Force	Leader	Crew #'s	Last Day on Fireline	Start Time	Back to Camp	Specific Crew Instructions
s.15	s.22	20	Aug 19	0700	2000	
		21	Aug 19	0700	2000	
		20	Aug 24	0700	2000	
		4	Aug 21	0700	2000	
		5	Aug 22	0700	2000	
		5	August 22			
		5	August 22			
		1	August 21	0700	2000	
		1	August 14	0700	2000	
				0700	2000	
		1	August 18	0700	2000	

6. Control Objectives

- Strengthen containment lines around spillover mop up to 100ft
- Heavy equipment containment line construction
- Plan for ignition operations to strengthen containment lines

7. Special Instructions

- PLEASE EMAIL DIV ASSIGNMENTS TO FireK20637PL@gov.bc.ca BEFORE 14:00
- All hand lighting needs to be approved by Div Sup.

DIVISION ASSIGNMENT LIST		1. Branch: East		2. Division: s.15		
3. Incident Name: K20637		4. Operational Period August 11, 2017		5. Time: 0700-2000		
Operations Personnel:						
Ops Chief	s.22		East Branch Director		s.22	
Div Sup			HLCO			
Resources Assigned to this Period						
Strike Team / Task Force	Leader	Crew #’s	Last Day on Fireline	Start Time	Back to Camp	Specific Crew Instructions

6. Control Objectives

- Guard construction parallel to powerlines in the south of the division
- Develop containments lines north of the division

7. Special Instructions

- PLEASE EMAIL DIV ASSIGNMENTS TO FireK20637PL@gov.bc.ca BEFORE 14:00
- All hand lighting needs to be approved by Div Sup.

DIVISION ASSIGNMENT LIST		1. Branch: East		2. Division: s.15		
3. Incident Name: K20637		4. Operational Period August 11, 2017		5. Time: 0700-2000		
Operations Personnel:						
Ops Chief		s.22		East Branch Director		s.22
Div Sup				HLCO		
Resources Assigned to this Period						
Strike Team / Task Force	Leader	Crew #'s	Last Day on Fireline	Start Time	Back to Camp	Specific Crew Instructions
s.15	s.22	20	Aug 22	0700	2000	
		19	Aug 23	0700	2000	
		1	August 16	0700	2000	
		5	August 23	0700	2000	
		5	August 23	0700	2000	
		5	August 22	0700	2000	
		5	August 22	0700	2000	
		1	August 19	0700	2000	
		1	August 13	0700	2000	
1	August 12	0700	2000			
6. Control Objectives						
<ul style="list-style-type: none">Continue to mop up containment lines and blackline to 50'Monitor and Lookout for s.15						
7. Special Instructions						
<ul style="list-style-type: none">PLEASE EMAIL DIV ASSIGNMENTS TO FireK20637PL@gov.bc.ca BEFORE 14:00All hand lighting needs to be approved by Div Sup.						

DIVISION ASSIGNMENT LIST	1. Branch: East	2. Division: s.15
3. Incident Name: K20637	4. Operational Period August 11, 2017	5. Time: 0700-2000
Operations Personnel:		
Ops Chief s.22	East Branch Director s.22	
Div Sup	HLCO	
Resources Assigned to this Period		
Strike Team / Task Force	Leader	Crew #s
6. Control Objectives		
<ul style="list-style-type: none"> Continue containment line construction with equipment strike team in preparation for ignition operations. Monitor and act as lookout by s.15 		
7. Special Instructions		
<ul style="list-style-type: none"> PLEASE EMAIL DIV ASSIGNMENTS TO FireK20637PL@gov.bc.ca BEFORE 14:00 All hand lighting needs to be approved by Div Sup 		

DIVISION ASSIGNMENT LIST	1. Branch: Equipment	2. Division: As required
3. Incident Name: K20637	4. Operational Period August 11, 2017	5. Time: 0700-2000
Operations Personnel:		
Ops Chief s.22	Air Branch Director s.22	
Equipment Branch Director	HLCO	
Resources Assigned to this Period		
Strike Team / Task Force	Leader	Crew #s
See Org chart for equipment task forces and strike teams Assignments will be provided by Equipment Group Supervisors		
6. Control Objectives		
<ul style="list-style-type: none"> Work with Division and Branch to coordinate equipment needs. Establish control and contingency lines with heavy equipment. Utilize heavy equipment to aid with danger tree falling as required. Support crew with heavy equipment needs. Ensure line locators have communications with equipment and crews. Lowbed equipment to staging for next assignment. 		
7. Special Instructions		
<ul style="list-style-type: none"> PLEASE EMAIL DIV ASSIGNMENTS TO FireK20637PL@gov.bc.ca BEFORE 14:00 		

DIVISION ASSIGNMENT LIST	1. Branch: Night Ops	2. Division: As required				
3. Incident Name: K20637	4. Operational Period August 11, 2017	5. Time: 0700-2000				
Operations Personnel:						
Ops Chief	s.22	Night Ops				
Div Sup		HLCO				
Resources Assigned to this Period						
Strike Team or Task Force/Call Sign	Leader	Crew #'s	Last Day on Fireline	Start Time	Back to Camp	Specific Crew Instructions
s.15	s.22	2		2000	0800	Night Ops Medic
		5		2000	0800	North
		5		2000	0800	North (patrol)
		5		2000	0800	
		3		2000	0800	Div A
		5		2000	0800	Cariboo
		5		2000	0800	s.22
		5		2000	0800	Div A
		5		2000	0800	
		1		2000	0800	
		10		2000	0800	Div B
		10		2000	0800	North
6. Control Objectives						
<ul style="list-style-type: none"> Protection of life and property Build guard/patrol Limited mop up 						
7. Special Instructions						
<ul style="list-style-type: none"> PLEASE EMAIL DIV ASSIGNMENTS TO FireK20637PL@gov.bc.ca BEFORE 14:00 						

DIVISION ASSIGNMENT LIST	1. Branch: Ignition	2. Division: As required				
3. Incident Name: K20637	4. Operational Period August 11, 2017	5. Time: 0700-2000				
Operations Personnel:						
Ops Chief	s.22	Ignition Specialist				
Div Sup		HLCO				
Resources Assigned to this Period						
Strike Team or Task Force/Call Sign	Leader	Crew #'s	Last Day on Fireline	Start Time	Back to Camp	Specific Crew Instructions
s.15	s.22	1		0700	2000	
		3		0700	2000	
		4		0700	2000	
6. Control Objectives						
Prepare for ignition operations to protect values in Clinton, West Fraser Mill, 70 Mile and critical infrastructure						
7. Special Instructions						
<ul style="list-style-type: none"> PLEASE EMAIL DIV ASSIGNMENTS TO FireK20637PL@gov.bc.ca BEFORE 14:00 						

DIVISION ASSIGNMENT LIST		8. Branch: SPS		9. Division: As required			
10. Incident Name: K20637		11. Operational Period August 11, 2017		12. Time: 0700-2000			
Operations Personnel:							
Ops Chief		s.22		SPS Branch Director			
Div Sup				HLCO			
Resources Assigned to this Period							
Strike Team or Task Force/Call Sign	Leader	Crew #s	Last Day on Fireline	Start Time	Back to Camp	Radio	Specific Crew Instructions
s.15	s.22			0600	2200	s.15	Time Sheets&Check In /Out
				0600	2200		Time Sheets&Check In /Out
				0600	2200		Time Sheets&Check In /Out
				0600	2200		Time Sheets&Check In /Out
				0600	2200		Time Sheets&Check In /Out
				0600	2200		Time Sheets&Check In /Out
				0600	2200		Time Sheets&Check In /Out
				1800	0900		Time Sheets&Check In /Out
				1800	0900		Time Sheets&Check In /Out
				0700	1900		Time Sheets&Check In /Out
				0700	1900		Time Sheets&Check In /Out
				0700	1900		Time Sheets&Check In /Out
				0700	1900		Time Sheets&Check In /Out
				0700	1900		Time Sheets&Check In /Out
				0700	1900		Time Sheets&Check In /Out
				0700	1900		Time Sheets&Check In /Out
				1400	0200		Time Sheets&Check In /Out
				1900	0700		Time Sheets&Check In /Out
				1900	0700		Time Sheets&Check In /Out
				1900	0700		Time Sheets&Check In /Out
				1900	0700		Time Sheets&Check In /Out
13. Control Objectives							
<ul style="list-style-type: none"> • Values protection utilizing sprinklers systems • Urban values protection utilizing fire departments apparatus • Support wildfire operations with water delivery 							
14. Special Instructions							
<ul style="list-style-type: none"> • PLEASE EMAIL DIV ASSIGNMENTS TO FireK20637PL@gov.bc.ca BEFORE 14:00 							

]

]

]

]

]

]

]

]

Incident	Date & Time Prepared:		Communications Plan		
K20637	Time: 21:00	Date: August 10	Operational Period:	07:00 to 20:00 hrs	
CHANNEL	FUNCTION	FREQUENCY TONE	ASSIGNMENT	REMARKS	
s.15	Command, Primary North Repeater	s.15	Command, Air Check-ins, Safety Check-ins, Medivac	Main Admin Channel	
	Command, Primary South Repeater		Command, Air Check-ins, Safety Check-ins, Medivac	Cache Creek Channel	
	Command Secondary Repeater		Command, Safety Check-ins	Secondary Admin Channel	
	Cache Creek Helibase Check-ins		Air check-ins, Safety Check-ins Div O & Q	Helibase to KFC	
	Command, East Branch Repeater		Command, Air Check-ins, Safety Check-ins, Medivac	East Branch	
	ACTION				
	Air to Air		Air Operations	Air Advisory	
	Air to Air		Air Operations	Tactical North	
	Air to Air		Air Operations	Tactical East	
	Air to Air		Air Operations	Tactical West	
	Air to Ground N & E		Air to Ground	Operations	
	Air to Ground West		Air to Ground	Operations	
	OPERATIONS				
	Ground to Ground		Fire Operations	All Divisions	
	Ground to Ground		Fire Operations	East Branch	
	Ground to Ground		Fire Operations	North & West	
	Ground to Ground		Fire Operations	South	
	Ignition		Fire Operations	Operations	

Ensure that at least one person on your crew is monitoring Iron to allow for contact with HELCOs

If you are using s.15 for Ground to Ground comms, please reassign to a different channel s.15 will now be used for Air to Ground

STRUCTURE				
s.15	Structure Branch Communication	s.15	Command/Safety	Structure Branch
			ROAD	
	Veasy Rd		West Branch	
	Chasm/Hihium Rd		North/East Branch	
	Battle/Back Valley Rd		East Branch	
	All unassigned roads		Road Travel	All Divisions

- Follow appropriate resource road protocol: ID yourself when entering a road (pick-up/lowbed), call 'UP' only at must call locations (entering new roads, freq changes, posted 'must call' locations). Call 'DOWN' at odd km and must call locations.

CHECK IN PROCEDURES

- Each division supervisor, or designate, will check in with the monitoring fire centre (in this case Kamloops Fire Centre) that all personnel are on site as per the IAP. If there are any deviations from the IAP this must be communicated to the fire centre.
- Division supervisors will do 4 hour check ins with the Kamloops Fire Centre.
- At the end of the day each division supervisor will check in with the Kamloops Fire Centre that all personnel are safely back in camp.
- Single resources not assigned to a division will do 2 hour checks with the Kamloops Fire Centre.
- Courtesy check with the division supervisor should be done when entering and leaving their area.

Please communicate any feedback to logistics for radio coverage issues

Incident	K20637	Operational Period	Date:	August, 11	Time:	0800-2100	
AVIATION ASSIGNMENTS							
Remarks		Medivac		NOTAM Information			
<u>Cache Creek Helco now on s.15</u> <u>Check comms page for other changes and confirm helco frequencies!</u> NOTAM as been expanded to include Flying-U Airstrip. Tomorrow's pilot briefing will be at 0830.		Clinton: OGJ Cache Creek: SCH Or, any medium or other machine that is <u>closest best</u> .		Formal NOTAM in place. Expires August 17.			
KAMLOOPS	Skids Up:	05:06	Skids Down:	20:35			
WILLIAMS LAKE	Skids Up:	05:45	Skids Down:	20:45			
AIR BRANCH PERSONNEL							
Position	Name	Call Sign	Frequencies	AM	FM	Contact Number	
AOBD	s.22	s.15				s.22	
ASGS							
Helco							
Helco							
Helco							
Helco							
Helibase Manager							
Helibase Manager							
South - Cache Creek							
Helco	s.22	s.15				s.22	
Helibase Manager							
Helibase Manager							
Helicopters							
South - Cache Creek							
Reg	Model	Start	End	Assignment	Pilot	Contact Numbers	Type
HHG	206B	900	2100	HLCO	s.22		4
FCE	350B2	830	2030	Ignitions			3
SLI	212	830	2030	Bucket Support			2
SLH	212	830	2030	Bucket Support			2
CCK	412 SP	830	2030	Bucket Support			2
BBT	214	830	2030	Bucket Support			1
ZVT	214	830	2030	Bucket Support			1
JQN	S-61	800	1400	Bucket Support			1
		1400	2100				
SHC	350B2	900	2100	Admin			3

WWL	212	900	2100	Rappel/Tank	s.22		2	
North - Clinton/Green Lake								
Reg	Model	Start	End	Assignment	s.22	Pilot	Contact Numbers	Type
HQW	206B	930	2100	Ignition		4		
ZHK	206B	930	2100	Ignition		4		
OGJ	350B2	830	2030	Admin		3		
OHK	350BA	830	2030	HLCO		3		
BSF	212	930	2100	Bucket Support		2		
AHL	212	930	2100	Bucket Support		2		
OHK	212	930	2100	Bucket Support		2		
CAN	212	930	2100	Bucket Support		2		
AVY	407	930	2100	Ignition		3		
HHU	350B2	830	2030	Admin		3		
Tanker 744	S64	900	2100	Tank Support		1		
Tanker 745	S64	900	2100	Tank Support		1		
LCN	EC120	800	2000	HLCO		4		
WTQ	412	900	2100	Tank		2		
CKX	350BA	900	2100	HLCO		3		
Fuel Browsers								
Position		Name		Call Sign	Frequencies	Location	Remarks	
North - Clinton/Green Lake								
Bowser		s.22	s.15			Ranch Helibase	s.22	
Bowser						Big Bar Helibase		
South - Cache Creek								
Bowser		s.22	s.15			Cache Creek	s.22	

K20637	August 11, 2017	COORDINATES LIST			
Location / Name	Latitude	Longitude	Status	Coord List Order	Remarks
Helispot	s.15		Current	102	H2
Helispot			Current	103	H3
Helispot			Current	104	H4
Helispot			Current	105	H5
Helispot			Current	106	H6 - Knife Lake
Helispot			Current	107	H7
Helispot			Current	111	H11
Helispot			Current	112	H12
Helispot			Current	113	H14
Helispot			Current	114	H15
Helispot			Current	115	H16
Helibase			Current	150	Big Bar Helibase
MediVac Site			Current	151	Cache Creek Airport/Medic
Helibase			Current	152	Clinton Helibase
First Aid Station			Current	200	Camp Medic
First Aid Station	s.22		Current	201	Battle Creek First Aid
First Aid Station			Current	202	Loon Lk Jct
Helibase			Current		Helibase
Repeater			Current	300	Repeater A3 T5
Repeater			Current	301	Repeater A2 T5
Mobile Weather Station			Current	303	Quick Deploy Wx
Staging Area			Current	401	Stage 1
Staging Area			Current	402	Stage 2
Staging Area			Current	403	Stage 3
Staging Area			Current	404	North Staging
Staging Area			Current	405	Esso Staging
Staging Area			Current	406	Staging H-1
Staging Area			Current	407	Staging
Staging Area			Current	408	Battle Creek Staging
Staging Area			Current	409	Scottie Creek Staging
Staging Area	s.22		Current	410	Knife Lake Staging
Staging Area			Current	411	9km Staging
Staging Area			Current	412	5.5km Staging
Staging Area			Current	413	Columbia
Staging Area			Current	414	Arrowstone W
Staging Area			Current	415	Arrowstone E
Staging Area			Current	416	Bonparte Staging
Staging Area			Current	417	Rodeo Grounds Staging
Staging Area			Current	418	Pit Staging Hwy 99
Staging Area			Current	419	Veasy Staging
Structure			Current	700	Kelly Lake Substation
Tower			Current	704	Tower
Other or Unassigned			Current	705	Temp Bridge

Operations Grid List		
Location / Name	Grid Reference	Remarks
Cache Creek Camp Medic	M9	s.15
Battle Creek FSR Medic & Stage	Q11	
Loon Lake Jct Medic	H18	
8 Mile Rd Medic (B)	I22	
Chasm FSR Medic	E31	
Loon Lake Rd Medic	H18	
A1 Repeater	E22	
B1 Repeater	L20	
Rain Gauge #1	Q11	
Rain Gauge #2	I22	
Tower	Q23	
H1 Helispot & Stage	L7	
Esso Staging	M4	
Stage 1	K11	
Stage 2	L11	
Stage 3	M10	
Battle Creek Staging	S15	
Arrowstone E Staging	Q13	
Arrowstone W Staging	P12	
North Staging	K12	
Columbia Staging	R15	
Knife Lake Helispot & Stage	J26	
5.5k Stage	I25	
Mound Road Stage Medic (A)	E26	

DANGER TREE PLAN FIRE K20637 – OPERATIONAL PERIOD Aug 11, 2017

Site Assessment Overview/Re-assessment Protocol

The main Fuel Type found on this fire is C-7, trees relatively resilient to fire. The B.U.I. Threshold is 80 – The BUI is 209, more than 2.5 times the than the threshold for this fuel type, therefore we can expect burning in stems/roots to continue through the night. DAILY ASSESSMENTS are prudent to keep personnel safe from fire damaged trees.

There are areas with beetle-killed pine – locals inform us that the pine beetle came through this area 10-12 years ago. Expect decayed roots and lower stems. Also, be very cautious when working around spruce trees, they are shallow rooted and tip over unexpectedly. NWZ's can be the best form of risk management in some of these scenarios.

Terrain features include open hillsides and broad valleys conducive to frequent mod-strong wind conditions. Remember to re-assess your work site following a wind event significant enough to break branches and cause whole trees to swing.

Expect Aspen stands on our work site, which require a careful assessment 360° around the stem, where often the main tree defects are found on the upper stem. See Appendix 6-2 in your Course Workbook for more on assessing Aspen.

Re-assessment is also required when LOD ratings go up due to a changed work activity.

Field Marking Protocol

Access/Egress/Escapes Trails: Pink or Blue Flagging

DTA : Orange flagging

DTF : Green flagging

No Work Zone : Yellow NWZ flagging

Danger Trees : Orange DT flagging

- ✓ NWZ's are marked on the map, with co-ordinates for large No Work Zones. No work zones must be well flagged in the field and easily identifiable from any direction.
- ✓ DTA flagging should have 5 pieces of information; date, call sign, LOD rating, start/stop, direction traveling along feature & width of assessed area. For lineal areas (i.e. machine guards) hang the flagging like an arrow or horizontally to indicate direction of travel
- ✓ DTF flagging includes date, DTF's call sign, & "complete". Place DTF flagging only after the falling is complete. Also hang the green when "no danger trees identified"
- ✓ Co-ordinates must be included in paperwork, and don't need to be on flagging. There should always be green flagging with the orange in a completed area.

Documentation: Include your name and call sign. Use the FS 502 small form for points and the daily form for large lineal areas. Mark the area you completed with green on the DTA map, then write on your field card 'on map' and put your field card in the Danger tree box.

Remember to transfer the information onto the DTA MAP in the Ops Tent in camp. We will be available in the evenings and mornings to help you do this. **You Help Us by completing your field cards, including marking the map. We help you by answering any questions you have and providing field training.**

Sensitive Areas (Riparian, Powerlines, Structures and Private Property – in these areas, the DTA process is not the best fit. Contact your Danger Tree Specialists if you will be assessing in these areas.

Remember! The goal is to create a safe work environment for ourselves, as well as crews entering our work sites after we've left. Concise information on your flagging is a large part of achieving this goal.

s.22

WMB



CHAINSAW SAFETY AWARENESS

July 2012

Availability of Qualified Assistance for fallers

Falling and bucking trees during wildfire suppression is a high risk activity and requires *WMB Wildfire Coordination Officers, supervisors and crews* to exercise careful planning around these activities to ensure for safety. OH&S regulation 26.28, "Summoning assistance", states:

1. Qualified assistance must be readily available to fallers in case of:
 - a. Falling difficulty,
 - b. Emergency or
 - c. Injury.
2. Fallers and buckers must have an effective means to summon assistance.

"Qualified" means being knowledgeable of the work, the hazards involved and the means to control the hazards, by reason of education, training, experience or a combination thereof.

What does this mean to WMB?

WMB complies with the *emergency and injury* in its daily chainsaw operations by having all crew members trained in emergency response, first aid protocols and radio communications.

WMB also complies with assistance in the event of *falling difficulty* during large fire operations, project work and fuel management projects by having multiple fallers on hand and readily available to help.

What about Initial Attack crews with one faller?

When responding to a single-crew, developing initial attack fire, it is sometimes not possible to have another faller readily available.

In that context of responding to a fire emergency, one faller can undertake limited falling without the assistance of another faller if other crew members are trained in bucking, injury and emergency response protocols.

When should I consider faller assistance?

When responding to an emergency initial attack fire, the crew leader and faller will request for another faller if:

1. There is a falling difficulty beyond the faller's ability and a "no work zone" around the falling difficulty is not a reasonable option.
2. There is an extensive amount of danger tree falling required, or prolonged falling work is anticipated during suppression of the wildfire.
3. Timber type and terrain on wildfire is beyond the faller's demonstrated qualification level.

When deploying Initial Attack crews with one faller, Wildfire Coordination Officers will provide assistance to the faller, upon request with:

1. Another WMB crew with a qualified faller
2. A single resource WMB qualified faller
3. A single resource qualified contract faller

IF IN DOUBT BACK OUT AND SEEK QUALIFIED ASSISTANCE



Wildfire Management - Staff Development & Safety Section

s.22

s.22

s.22

Contact List

Position	Name	Camp	Contact Number
IMT & Support Staff			
IC	s.22	Clinton	s.22
Info Officer		Clinton	
Safety Officer		Clinton	
Safety Officer		Clinton	
Safety Officer		Clinton	
Range Liaison		Clinton	
Plans Section Chief		Clinton	
Plans Section Chief Trainee		Clinton	
Resource Unit Leader		Clinton	
Logs Section Chief		Clinton	
Logs Section Chief trainee		Clinton	
Food Unit Leader		Clinton	
Camp Manager		Clinton	
Finance Section Chief		Clinton	
Finance SC trainee		Clinton	
Ops Section Chief		Clinton	
Ops Section Chief Trainer		Clinton	
Ops Section Chief Trainee		Clinton	
FBAN		Clinton	
FBAN		Clinton	
Air Branch Director		Clinton	
Air Branch Director Trainee		Clinton	
Quebec Agency Rep			
NWT Arep			
New Zealand A Rep		Clinton	
Operations			
Ops Branch Dir East		Clinton	
Ignition Specialist		Clinton	
DIV A		Clinton	
DIV C & D		Clinton	
DIV B		Clinton	
DIV E		Cache Creek	
DIV F		Clinton	
Ops Branch Dir North		Clinton	
Ops Branch Dir West		Clinton	
DIV R STL		Cache Creek	
DIV S TFL		Cache Creek	
DIV Q		Cache Creek	
DIV N		Cache Creek	
DIV R		Cache Creek	
TFL Q		Cache Creek	
TFL R1		Cache Creek	
Night OPS 637		Cache Creek	
Night OPS TFL		Cache Creek	
Falling Coordinator		Clinton	
DTS		Clinton	
Structural Branch Director		Clinton	

Equipment Branch Director	s.22
Equip Grp Sup East	
Equip Grp Sup West	
Equip Grp Sup North	
Equip Grp Supply East	
Staging Manager	
Staging Officer	
Structural Specialist Sprinkler	
Structural Specialist Sprinkler	
Structural Specialist West	
Structural Specialist Night	

s.15,s.22

Clinton	s.22
Cache Creek	
Clinton	
Clinton	
Clinton	
Clinton	
Cache Creek	
Cache Creek	
Clinton	
Clinton	
Clinton	

Incident Action Plan

K20637

August 12, 2017



Message of the Day

'And the Elephant ran through the forest knocking everything down in its path' s.22

Continue to monitor and observe changes in fire behaviour.

Prepared by s.22

Plans Section Chief

s.22

s.22

Approved for implementation by s.22

Incident Commander

INCIDENT OBJECTIVES	K20637	Date & Time Completed:	August 11, 2017 at 21:00
Operational Period	August 12, 2017 0700hrs to 2000hrs		
GENERAL OBJECTIVES (Detailed objectives in Div Assignments)			
Command	<ul style="list-style-type: none"> • Provide for the safety of all responders - and ensure safe operations. • Prioritize use of resources. • Liaise with outside partners. 		
Operations	<ul style="list-style-type: none"> • Values protection in Clinton, West Fraser Mill and 70 Mile. • Seek opportunities for burn operations. • Allocation of resources as required. 		
Plans	<ul style="list-style-type: none"> • Daily IAP for distribution before morning shift start. • Resource tracking, documentation, fire mapping. • Contingency planning. 		
Logistics	<ul style="list-style-type: none"> • Processing fire orders. • Filling Resource Requests. 		
Finance	<ul style="list-style-type: none"> • Process daily time slips. • Track and report daily/total costs. • Ensure agreements / contracts are in place. 		
SAFETY MESSAGE			
<p>As fire Behavior increases with warming temperatures and increased winds over the next few days consider posting Lookouts in key areas.</p> <p>Copyright</p> <p>Lookout(s) or scouts (roving lookouts) need to be in a position where both the objective hazard and the firefighter(s) can be seen. Lookouts must be trained to observe the fire environment and to recognize and anticipate fire behavior changes.</p> <p>Because of terrain, cover and fire size one lookout is normally not sufficient. The whole idea is when the objective hazard becomes a danger, the lookout relays the information to the firefighters so they can reposition to the safety zone as required. Every firefighter has the authority to warn others when they notice an objective hazard which becomes a threat to safety.</p> <p><u>Everyone Is A Lookout</u></p>			

[illegible]

Medical Ops Plan	Fire Number	Operational Period:		0700hrs to 2000hrs				
	K20637							
MEDICAL AID STATION Call Sign	LOCATION	Radio Freq.	Start Times	Paramedics				
				Yes	No			
Cache Creek Camp Medic	Cache Creek Camp (day & night)	s.15	24hr		X			
Hihium Lake Medic	Hihium Lake (day)		24hr		X			
Mound Road Medic	Fenton Road/Mound Road Junction (day)		0700		X			
Two Flags Medic	Two Flags Helispot H11 (day)		0700		X			
Battle Creek Medic	Battle Creek FSR/Back Valley Road Junction (day)		0700		X			
Clinton Camp Medic	Clinton Camp (day & night)		0700		X			
Chasm FSR Medic	Chasm FSR (day)		0700		X			
Loon Lake Road Medic	Loon Lake Road (night)		2000		X			
Night Ops Medic	Keldam First Aid (night)		2000		X			
Medics must record the name of their company, as well as the crew/employer of the patient on all First Aid Records.								
Level III Fireline First Aid								
<ul style="list-style-type: none"> Crew level III first aid attendants will be designated daily and will render initial first aid. 								
HOSPITALS								
Name	Address	Travel Time		Phone	Helipad?		Burn Unit?	
		Air	Ground		Yes	No	Yes	No
Royal Inland Hospital	311 Columbia Ave, Kamloops	30min	75min	250-374-5111	X			X
100 Mile District General Hospital	555 Cedar Avenue South, 100 Mile House		47min	250-395-7600		X		X
Ashcroft Hospital (18:00 Friday to 08:00 on Monday)	700 Ash-Cache Creek Hwy, Ashcroft		36min	250-453-2211		X		X
TRANSPORTATION								
Name	Call Sign	Phone	Paramedics					
			Yes	No				
BC Ambulance*		911	X					
Air Medivac	s.15			X				
* BC Ambulance not available in Clinton.								
MEDICAL PROCEDURES								
<p>All injuries are to be reported to the supervisor immediately. Medic, Safety Officer, and Fire Centre will be notified by the supervisor.</p> <ul style="list-style-type: none"> Crew first aid attendant will assess the injury and treat. First Aid attendant will notify the Medic and determine the level of treatment required. First Aid Attendant or Medic in charge of the patient will determine the method of transport and the transport location. Requests for transport will be made through the supervisor. Supervisor will ensure that necessary documents are completed and turned in to the Safety Officer. <p>AIR MEDIVAC PROCEDURES: SERIOUS INJURIES</p> <ul style="list-style-type: none"> Requests for air medivac will be made through the Division Supervisor to KFC Dispatch. Dispatch will coordinate BC Ambulance Service (BCAS) response. Appropriate aircraft will be designated for medivac by AOBD. First Aid Attendant in charge will determine the destination in consultation with Dispatch: ambulance or hospital. BCAS may change the destination or rendezvous en route. <p>GROUND TRANSPORT PROCEDURES: MINOR INJURIES</p> <ul style="list-style-type: none"> First Aid Attendant in charge will render First Aid and determine that ground transport is adequate. Patient is either released or transported by vehicle to ambulance or hospital. Patient transfer to ambulance will occur as soon as possible. Other minor injuries will be directed to the hospital as required. <p>Note: In most cases, BCAS will be unable to travel off paved roads to complete patient transfers.</p>								
BRANCH DIRECTORS! Update Plans Section if Medic locations change.								

DIVISION ASSIGNMENT LIST		1. Branch: West		2. Division: s.15		
3. Incident Name: K20637		4. Operational Period August 12, 2017		5. Time: 0700-2000		
Operations Personnel:						
Ops Chief	s.22		Ops Branch Director	s.22		
Div Sup			HLCO			
resources Assigned to this Period						
Strike Team / Task Force	Leader	Crew #'s	Last Day on Fireline	Start Time	Back to Camp	Specific Crew Instructions
s.15	s.22	4	August 14	0700	1900	Move bubble to s.22
		TBD		0700	2000	Patrol Loon lk road for hot spots
		5	August 19	0700	2000	Collect excess gear from line
		1	August 19	0700	2000	Collect excess gear from line
		5		0700	2000	

6. Control Objectives
<ul style="list-style-type: none"> • Complete burn ops as required • Mop up 50 ft around bubbles and along road • Patrol structures for hotspots (extinguish if any found) • Demob unused gear and return to warehouse • Maintain sprinkler lines to houses and bubble sprinklers
7. Special Instructions
<ul style="list-style-type: none"> • PLEASE EMAIL DIV ASSIGNMENTS TO FireK20637PL@gov.bc.ca BEFORE 14:00

DIVISION ASSIGNMENT LIST		1. Branch: West		2. Division: s.15		
3. Incident Name: K20637		4. Operational Period August 12, 2017		5. Time: 0700-2000		
Operations Personnel:						
Ops Chief		s.22		Ops Branch Director		s.22
Div Sup				HLCO		
Resources Assigned to this Period						
Strike Team / Task Force	Leader	Crew #'s	Last Day on Fireline	Start Time	Back to Camp	Specific Crew Instructions
s.15	s.22	20	August 18	0700	2000	
		1	August 15	0700	1900	
		20	August 21	0700	2000	
		20		0700	2000	
6. Control Objectives						
<ul style="list-style-type: none"> Mop up and patro s.22 Mop up and patrol Hwy 99 and dozer guard Edge lighting on any fuel on dozer guard along southern edge Continue to cut dozer guard along Timien Road 						
7. Special Instructions						
<ul style="list-style-type: none"> PLEASE EMAIL DIV ASSIGNMENTS TO FireK20637PL@gov.bc.ca BEFORE 14:00 						

DIVISION ASSIGNMENT LIST		1. Branch: West		2. Division: s.15		
3. Incident Name: K20637		4. Operational Period August 12, 2017		5. Time: 0700-2000		
Operations Personnel:						
Ops Chief		s.22		Ops Branch Director		s.22
Div Sup				HLCO		
Resources Assigned to this Period						
Strike Team / Task Force	Leader	Crew #'s	Last Day on Fireline	Start Time	Back to Camp	Specific Crew Instructions
s.15	s.22	5	August 18	0700	1900	
		2	TBD	0700	2000	
		5	TBD	0700	1900	
		4	TBD	0700	2000	
		1	August 15	0700	2000	
		5	TBD	1900	0700	
6. Control Objectives						
<ul style="list-style-type: none"> Mop up along hoses and guard Support Ignition Operations Support structure protection 						
7. Special Instructions						
<ul style="list-style-type: none"> PLEASE EMAIL DIV ASSIGNMENTS TO FireK20637PL@gov.bc.ca BEFORE 14:00 						

DIVISION ASSIGNMENT LIST		1. Branch: West		2. Division: s.15		
3. Incident Name: K20637		4. Operational Period August 12, 2017		5. Time: 0700-2000		
Operations Personnel:						
Ops Chief		s.22		Ops Branch Director		
Div Sup				HLCO		
Resources Assigned to this Period						
Strike Team / Task Force	Leader	Crew #'s	Last Day on Fireline	Start Time	Back to Camp	Specific Crew Instructions
s.15	s.22	5	August 18	0700	1900	
		2	TBD	0700	1900	
		20	TBD	0700	1900	
		1	TBD	0700	1900	
6. Control Objectives						
<ul style="list-style-type: none"> Mop up where required Mop up and patrol of guards and hoseline Assess areas of concern for reburn 						
7. Special Instructions						
<ul style="list-style-type: none"> PLEASE EMAIL DIV ASSIGNMENTS TO FireK20637PL@gov.bc.ca BEFORE 14:00 						

DIVISION ASSIGNMENT LIST		1. Branch: North		2. Division: s.15		
3. Incident Name: K20637		4. Operational Period August 12, 2017		5. Time: 0700-2000		
Operations Personnel:						
Ops Chief		s.22		North Branch Director		
Div Sup				HLCO		
Resources Assigned to this Period						
Strike Team / Task Force	Leader	Crew #'s	Last Day on Fireline	Start Time	Back to Camp	Specific Crew Instructions
s.15	s.22	3	TBD	0700	1930	
		20	August 21	0700	1930	s.15
		5	August 12	0700	1930	
		5	August 19	0700	1930	
		20	August 24	0700	2000	
6. Control Objectives						
<ul style="list-style-type: none"> Wetline 20ft along perimeter Extinguish hotspots from scan Recover and recycle equipment if required 						
7. Special Instructions						
<ul style="list-style-type: none"> PLEASE EMAIL DIV ASSIGNMENTS TO FireK20637PL@gov.bc.ca BEFORE 14:00 						

DIVISION ASSIGNMENT LIST		1. Branch: North		2. Division: s.15		
3. Incident Name: K20637		4. Operational Period August 12, 2017		5. Time: 0700-2000		
Operations Personnel:						
Ops Chief		s.22		North Branch Director s.22		
Div Sup				HLCO		
Resources assigned to this period						
Strike Team / Task Force	Leader	Crew #'s	Last Day on Fireline	Start Time	Back to Camp	Specific Crew Instructions
s.15	s.22	20	TBD	0700	2000	s.15
		18	August 18	0700	1930	
		5	TBD	0700	1930	
		5	TBD	0700	1930	
		19	August 24	0700	2000	
6. Control Objectives						
<ul style="list-style-type: none"> Build dozer line to east Mop up 20ft fire perimeter DTA/DTF as required s.15 						
7. Special Instructions						
<ul style="list-style-type: none"> PLEASE EMAIL DIV ASSIGNMENTS TO FireK20637PL@gov.bc.ca BEFORE 14:00 						

DIVISION ASSIGNMENT LIST		1. Branch: East		2. Division: s.15		
3. Incident Name: K20637		4. Operational Period August 12, 2017		5. Time: 0700-2000		
Operations Personnel:						
Ops Chief		s.22		East Branch Director s.22		
Div Sup				HLCO		
Resources Assigned to this Period						
Strike Team / Task Force	Leader	Crew #'s	Last Day on Fireline	Start Time	Back to Camp	Specific Crew Instructions
s.15	s.22	20	Aug 24	0700	2000	
		5	Aug 22	0700	2000	
		5	Aug 22	0700	2000	
		1	August 22	0700	2000	
		1	August 22	0700	2000	
		18	TBD	0700	2000	
		5	August 22	0700	1900	
6. Control Objectives						
<ul style="list-style-type: none"> Complete containment and mop up on hot spot discovered Aug. 8th. Aggressive blackout around recent burn on western side. Patrol and burn as much of western boundary as possible. 						
7. Special Instructions						

DIVISION ASSIGNMENT LIST	1. Branch: East	2. Division: s.15				
3. Incident Name: K20637	4. Operational Period August 12, 2017	5. Time: 0700-2000				
Operations Personnel:						
Ops Chief	s.22	East Branch Director s.22				
Div Sup		HLCO				
Resources Assigned to this Period						
Strike Team / Task Force	Leader	Crew #s	Last Day on Fireline	Start Time	Back to Camp	Specific Crew Instructions
s.15	s.22	5	TBD	0700	2000	
6. Control Objectives						
<ul style="list-style-type: none"> Monitor downslope growth towards s.22 Pinch out fire along creek 30 lengths of 1.5 inch hose to recover 						
7. Special Instructions						
<ul style="list-style-type: none"> PLEASE EMAIL DIV ASSIGNMENTS TO FireK20637PL@gov.bc.ca BEFORE 14:00 All hand lighting needs to be approved by Div Sup 						

DIVISION ASSIGNMENT LIST	1. Branch: East	2. Division: s.15				
3. Incident Name: K20637	4. Operational Period August 12, 2017	5. Time: 0700-2000				
Operations Personnel:						
Ops Chief	s.22	East Branch Director s.22				
Div Sup		HLCO				
Resources Assigned to this Period						
Strike Team / Task Force	Leader	Crew #s	Last Day on Fireline	Start Time	Back to Camp	Specific Crew Instructions
s.15	s.22	20	Aug 18	0700	2000	
		21	Aug 18	0700	2000	
		20	Aug 24	0700	2000	
		4	Aug 21	0700	2000	
		5	Aug 22	0700	2000	
		5	August 22	0700	2000	
		5	August 22	0700	2000	
		1	August 21	0700	2000	
		1	August 14	0700	2000	
			TBD	0700	2000	
		1	August 18	0700	2000	
6. Control Objectives						
<ul style="list-style-type: none"> Strengthen containment lines around spillover mop up to 100ft Heavy equipment containment line construction Plan for ignition operations to strengthen containment lines Strengthen cat guard in North of division. Close containment of any active fire East of containment line. Aggressive blackout to 20 ft. Develop containments lines north of the division 						

7. Special Instructions
<ul style="list-style-type: none"> PLEASE EMAIL DIV ASSIGNMENTS TO FireK20637PL@gov.bc.ca BEFORE 14:00 All hand lighting needs to be approved by Div Sup.

DIVISION ASSIGNMENT LIST		1. Branch: East		2. Division: s.15			
3. Incident Name: K20637		4. Operational Period August 12, 2017		5. Time: 0700-2000			
Operations Personnel:							
Ops Chief		s.22		East Branch Director		s.22	
Div Sup				HLCO			
Resources Assigned to this Period							
Strike Team / Task Force		Leader	Crew #'s	Last Day on Fireline	Start Time	Back to Camp	Specific Crew Instructions
s.15		s.22	20	Aug 22	0700	2000	
			19	Aug 23	0700	2000	
			1	August 16	0700	2000	
			5	August 23	0700	2000	
			5	August 23	0700	2000	
			5	August 22	0700	2000	
			5	August 22	0700	2000	
			1	August 19	0700	2000	
			1	August 13	0700	2000	
			1	August 12	0700	2000	

6. Control Objectives
<ul style="list-style-type: none"> Monitor and Lookout for s.15 Consolidate containment lines in southern area of division. Aggressive mop up and deepen to 50 ft. Continue to patrol to the North.
7. Special Instructions
<ul style="list-style-type: none"> PLEASE EMAIL DIV ASSIGNMENTS TO FireK20637PL@gov.bc.ca BEFORE 14:00 All hand lighting needs to be approved by Div Sup.

DIVISION ASSIGNMENT LIST	1. Branch: East	2. Division: s.15				
3. Incident Name: K20637	4. Operational Period August 12, 2017	5. Time: 0700-2000				
Operations Personnel:						
Ops Chief	s.22	East Branch Director s.22				
Div Sup		HLCO				
Resources Assigned to this Period						
Strike Team / Task Force	Leader	Crew #’s	Last Day on Fireline	Start Time	Back to Camp	Specific Crew Instructions
s.15	s.22					
6. Control Objectives						

- Monitor and act as lookout by s.15
- Continue to suppress fire along road to maintain safe egress for equipment working in East of division.

7. Special Instructions

- PLEASE EMAIL DIV ASSIGNMENTS TO FireK20637PL@gov.bc.ca BEFORE 14:00
- All hand lighting needs to be approved by Div Sup

DIVISION ASSIGNMENT LIST		1. Branch: Equipment		2. Division: As required		
3. Incident Name: K20637		4. Operational Period August 12, 2017		5. Time: 0700-2000		
Operations Personnel:						
Ops Chief	s.22		Air Branch Director	s.22		
Equipment Branch Director			HLCO			
Resources Assigned to this Period						
Strike Team / Task Force	Leader	Crew #s	Last Day on Fireline	Start Time	Back to Camp	Specific Crew Instructions
See Org chart for equipment task forces and strike teams Assignments will be provided by Equipment Group Supervisors						
6. Control Objectives						
<ul style="list-style-type: none"> • Work with Division and Branch to coordinate equipment needs. • Establish control and contingency lines with heavy equipment. • Utilize heavy equipment to aid with danger tree falling as required. • Support crew with heavy equipment needs. • Ensure line locators have communications with equipment and crews. • Lowbed equipment to staging for next assignment. 						
7. Special Instructions						
<ul style="list-style-type: none"> • PLEASE EMAIL DIV ASSIGNMENTS TO FireK20637PL@gov.bc.ca BEFORE 14:00 						

DIVISION ASSIGNMENT LIST		1. Branch: Night Ops		2. Division: As required				
3. Incident Name: K20637		4. Operational Period August 12, 2017		5. Time: 0700-2000				
Operations Personnel:								
Ops Chief		s.22		Night Ops s.22				
Div Sup				HLCO				
Resources Assigned to this Period								
Strike Team or Task Force/Call Sign		Leader		Crew #’s	Last Day on Fireline	Start Time	Back to Camp	Specific Crew Instructions
s.15		s.22						
				2	August 13	2000	0800	Night Ops Medic
				5	TBD	2000	0800	North
				5	TBD	2000	0800	North (patrol)
				5	TBD	2000	0800	
				3	TBD	2000	0800	Div A
				5	August 17	2000	0800	Cariboo
				5	August 17	2000	0800	s.22
				5	August 17	2000	0800	Div A
				5	August 17	2000	0800	
				1	August 18	2000	0800	
				10	August 20	2000	0800	Div B
				10	August 20	2000	0800	North
6. Control Objectives								
<ul style="list-style-type: none">Protection of life and propertyBuild guard/patrolLimited mop up								
7. Special Instructions								
<ul style="list-style-type: none">PLEASE EMAIL DIV ASSIGNMENTS TO FireK20637PL@gov.bc.ca BEFORE 14:00								

DIVISION ASSIGNMENT LIST		1. Branch: Ignition		2. Division: As required				
3. Incident Name: K20637		4. Operational Period August 12, 2017		5. Time: 0700-2000				
Operations Personnel:								
Ops Chief		s.22		Ignition Specialist		s.22		
Div Sup				HLCO				
Resources Assigned to this Period								
Strike Team or Task Force/Call Sign		Leader		Crew #’s	Last Day on Fireline	Start Time	Back to Camp	Specific Crew Instructions
s.15		s.22		1	August 20	0700	2000	
				3	August 14	0700	2000	
				4	August 17	0700	2000	
6. Control Objectives								
Prepare for ignition operations to protect values in Clinton, West Fraser Mill, 70 Mile and critical infrastructure								
7. Special Instructions								
• PLEASE EMAIL DIV ASSIGNMENTS TO FireK20637PL@gov.bc.ca BEFORE 14:00								

DIVISION ASSIGNMENT LIST	8. Branch:	9. Division:
---------------------------------	-------------------	---------------------

		SPS		As required			
10. Incident Name: K20637		11. Operational Period August 12, 2017		12. Time: 0700-2000			
Operations Personnel:							
Ops Chief		s.22		SPS Branch Director		s.22	
Div Sup				HLCO			
Resources Assigned to this Period							
Strike Team or Task Force/Call Sign	Leader	Crew #'s	Last Day on Fireline	Start Time	Back to Camp	Radio	Specific Crew Instructions
s.15	s.22			0600	2200	s.15	Time Sheets&Check In /Out
			August 24	0600	2200		Time Sheets&Check In /Out
				0600	2200		Time Sheets&Check In /Out
				0600	2200		Time Sheets&Check In /Out
				0600	2200		Time Sheets&Check In /Out
				0600	2200		Time Sheets&Check In /Out
				0600	2200		Time Sheets&Check In /Out
				1800	0900		Time Sheets&Check In /Out
				1800	0900		Time Sheets&Check In /Out
				0700	1900		Time Sheets&Check In /Out
				0700	1900		Time Sheets&Check In /Out
				0700	1900		Time Sheets&Check In /Out
				0700	1900		Time Sheets&Check In /Out
				0700	1900		Time Sheets&Check In /Out
				0700	1900		Time Sheets&Check In /Out
				0700	1900		Time Sheets&Check In /Out
				1400	0200		Time Sheets&Check In /Out
				1900	0700		Time Sheets&Check In /Out
				1900	0700		Time Sheets&Check In /Out
				1900	0700		Time Sheets&Check In /Out
13. Control Objectives							
<ul style="list-style-type: none"> • Values protection utilizing sprinklers systems • Urban values protection utilizing fire departments apparatus • Support wildfire operations with water delivery 							
14. Special Instructions							
<ul style="list-style-type: none"> • PLEASE EMAIL DIV ASSIGNMENTS TO FireK20637PL@gov.bc.ca BEFORE 14:00 							

]

Incident		Date & Time Prepared:		Communications Plan		
K20637		Time: 21:00	Date: August 11	Operational Period:	07:00 to 20:00 hrs	
CHANNEL	FUNCTION	FREQUENCY TONE	ASSIGNMENT	REMARKS		
s.15	Command, Primary North Repeater	s.15	Command, Air Check-ins, Safety Check-ins, Medivac		Main Admin Channel	
	Command, Air Check-ins, Safety Check-ins, Medivac		Cache Creek Channel			
	Command, Safety Check-ins		Secondary Admin Channel			
	Air check-ins, Safety Check-ins Div O & Q		Helibase to KFC			
	Command, Air Check-ins, Safety Check-ins, Medivac		East Branch			
	ATION					
	Air Operations		Air Advisory			
	Air Operations		Tactical North			
	Air Operations		Tactical East			
	Air Operations		Tactical West			
	Air to Ground East		Operations			
	Air to Ground West		Operations			
	Air to Ground North		Operations			
	ERATIONS					
	Ground to Ground		Fire Operations		All Divisions	
	Ground to Ground		Fire Operations		East Branch	
	Ground to Ground		Fire Operations		North & West	
	Ground to Ground		Fire Operations		South	
	Ignition		Fire Operations		Operations	
	Ensure that at least one person on your crew is monitoring Iron to allow for contact with HELCOs					
If you are using s.15 for Ground to Ground comms, please reassign to a different channel s.15 will now be used for Air to Ground						
STRUCTURE						
s.15	Structure Branch Communication	s.15	Command/Safety		Structure Branch	
	ROAD					
	West Branch					
	North/East Branch					
	East Branch					
	Road Travel		All Divisions			
	Veasy Rd					
Chasm/Hihium Rd						
Battle/Back Valley Rd						
All unassigned roads						

- Follow appropriate resource road protocol: ID yourself when entering a road (pick-up/lowbed), call 'UP' only at must call locations (entering new roads, freq changes, posted 'must call' locations). Call 'DOWN' at odd km and must call locations.

CHECK IN PROCEDURES	
1.	Each division supervisor, or designate, will check in with the monitoring fire centre (in this case Kamloops Fire Centre) that all personnel are on site as per the IAP. If there are any deviations from the IAP this must be communicated to the fire centre.
2.	Division supervisors will do 4 hour check ins with the Kamloops Fire Centre.
3.	At the end of the day each division supervisor will check in with the Kamloops Fire Centre that all personnel are safely back in camp.
4.	Single resources not assigned to a division will do 2 hour checks with the Kamloops Fire Centre.
5.	Courtesy check with the division supervisor should be done when entering and leaving their area.
Please communicate any feedback to logistics for radio coverage issues	

Incident	K20637	Operational Period	Date:	August, 12	Time:	0830-2030	
AVIATION ASSIGNMENTS							
Remarks		Medivac		NOTAM Information			
<u>Confirm Helco frequencies and air-to-ground frequencies!</u> Report any Aviation IAP errors to s.22 ALTIMETER is 29.92		Clinton: OGJ Cache Creek: SHC Or, any medium or other machine that is <u>closest best</u> .		Formal NOTAM in place. Expires August 17.			
KAMLOOPS	Skids Up:	05:08	Skids Down:	20:33			
100 MILE	Skids Up:	05:46	Skids Down:	20:42			
AIR BRANCH PERSONNEL							
Position	Name	Call Sign	AM	FM	Contact	Comments	
AOBD	s.22	s.15			s.22		
ASGS							
Helco						s.15	
Helco							
Helco							
Helco							
Helco							
Helibase Manager							
Helibase Manager							
South - Cache Creek							
Helco	s.22	s.15			s.22	s.15	
Helco							
Helibase Manager							
Helicopters							
South - Cache Creek							
Reg	Model	Start	End	Assignment	Pilot	Contact	Type
HHG	206B	830	2030	HLCO	s.22		4
FCE	350B2	830	2030	Admin/Ignitions			3
SLI	212	830	2030	Bucket Support			2
SLH	212	830	2030	Bucket Support			2
CCK	412 SP	830	2030	Bucket Support			2
BBT	214	830	2030	Bucket Support			1
ZVT	214	830	2030	Bucket Support			1
JQN	S-61	830	1400	Bucket Support			1
		1400	2030				
SHC	350B2	900	2100	HLCO			3
WWL	212	830	2030	Tank			2
North - Clinton/Green Lake							
Reg	Model	Start	End	Assignment	Pilot	Contact	Type
HQW	206B	830	2030	Ignition	s.22		4

ZHK	206B	830	2030	Ignition	s.22	4
OGJ	350B2	830	2030	Admin		3
OHK	350BA	830	2030	HLCO		3
BSF	212	830	2030	Bucket Support		2
AHL	212	830	2030	Bucket Support		2
OHK	212	830	2030	Bucket Support		2
CAN	212	830	2030	Bucket Support		2
AVY	407	830	2030	Admin/Ignition		3
HHU	350B2	830	2030	Admin		3
Tanker 744	S64	830	2030	Tank Support		1
Tanker 745	S64	830	2030	Tank Support		1
LCN	EC120	830	2030	HLCO		4
WTQ	412	830	2030	Tank		2
Fuel Bowsers						
Position	Name	Call Sign	Company	Location	Contact	
North - Clinton/Green Lake						
Bowser	s.22	s.15	Executive	Ranch Helibase	s.22	
Bowser			Airspan	Big Bar Helibase		
South - Cache Creek						
Bowser	s.22	s.15	Black Tusk	Airport	s.22	

K20637	August 12, 2017	COORDINATES LIST	
Location / Name	Latitude	Longitude	Remarks
Helispot	s.15		H2
Helispot			H3
Helispot			H4
Helispot			H5
Helispot			H6 - Knife Lake
Helispot			H7
Helispot			H11
Helispot			H12
Helispot			H14
Helispot			H15
Helispot			H16
Helibase			Big Bar Helibase
MediVac Site			Cache Creek Airport/Medic
Helibase			Clinton Helibase
First Aid Station			Camp Medic
First Aid Station			Battle Creek First Aid
First Aid Station			Loon Lk Jct
Helibase			S.22 Helibase
Repeater			Repeater A3 T5
Repeater			Repeater A2 T5
Mobile Weather Station			Quick Deploy Wx
Staging Area			Stage 1
Staging Area			Stage 2
Staging Area			Stage 3
Staging Area			North Staging
Staging Area			Esso Staging
Staging Area			Staging H-1
Staging Area			S.22 Staging
Staging Area			Battle Creek Staging
Staging Area			Scottie Creek Staging
Staging Area			Knife Lake Staging
Staging Area			9km Staging
Staging Area			5.5km Staging
Staging Area			Columbia
Staging Area			Arrowstone W
Staging Area			Arrowstone E
Staging Area			Bonparte Staging
Staging Area			Rodeo Grounds Staging
Staging Area			Pit Staging Hwy 99
Staging Area			Veasy Staging
Structure			Kelly Lake Substation
Tower			Tower
Other or Unassigned			Temp Bridge
NOTAM NE			
NOTAM NW			
NOTAM S			
NOTAM SE			
NOTAM E			
NOTAM W			
NOTAM N			

Operations Grid List		
Location / Name	Grid Reference	Remarks
Cache Creek Camp Medic	M9	s.15
Battle Creek FSR Medic & Stage	Q11	
Loon Lake Jct Medic	H18	
8 Mile Rd Medic (B)	I22	
Chasm FSR Medic	E31	
Loon Lake Rd Medic	H18	
A1 Repeater	E22	
B1 Repeater	L20	
Rain Gauge #1	Q11	
Rain Gauge #2	I22	
Tower	Q23	
H1 Helispot & Stage	L7	
Esso Staging	M4	
Stage 1	K11	
Stage 2	L11	
Stage 3	M10	
Battle Creek Staging	S15	
Arrowstone E Staging	Q13	
Arrowstone W Staging	P12	
North Staging	K12	
Columbia Staging	R15	
Knife Lake Helispot & Stage	J26	
5.5k Stage	I25	
Mound Road Stage Medic (A)	E26	

DANGER TREE PLAN FIRE K20637 – OPERATIONAL PERIOD Aug 11, 2017

Site Assessment Overview/Re-assessment Protocol

The main Fuel Type found on this fire is C-7, trees relatively resilient to fire. The B.U.I. Threshold is 80 – The BUI is 209, more than 2.5 times the than the threshold for this fuel type, therefore we can expect burning in stems/roots to continue through the night. DAILY ASSESSMENTS are prudent to keep personnel safe from fire damaged trees.

There are areas with beetle-killed pine – locals inform us that the pine beetle cam through this area 10-12 years ago. Expect decayed roots and lower stems. Also, be very cautious when working around spruce trees, they are shallow rooted and tip over unexpectedly. NWZ's can be the best form of risk management in some of these scenarios.

Terrain features include open hillsides and broad valleys conducive to frequent mod-strong wind conditions. Remember to re-assess your work site following a wind event significant enough to break branches and cause whole trees to swing.

Expect Aspen stands on our work site, which require a careful assessment 360° around the stem, where often the main tree defects are found on the upper stem. See Appendix 6-2 in your Course Workbook for more on assessing Aspen.

Re-assessment is also required when LOD ratings go up due to a changed work activity.

Field Marking Protocol

Access/Egress/Escapes Trails: Pink or Blue Flagging

DTA : Orange flagging

DTF : Green flagging

No Work Zone : Yellow NWZ flagging

Danger Trees : Orange DT flagging

- ✓ NWZ's are marked on the map, with co-ordinates for large No Work Zones. No work zones must be well flagged in the field and easily identifiable from any direction.
- ✓ DTA flagging should have 5 pieces of information; date, call sign, LOD rating, start/stop, direction traveling along feature & width of assessed area. For lineal areas (i.e. machine guards) hang the flagging like an arrow or horizontally to indicate direction of travel
- ✓ DTF flagging includes date, DTF's call sign, & "complete". Place DTF flagging only after the falling is complete. Also hang the green when "no danger trees identified"
- ✓ Co-ordinates must be included in paperwork, and don't need to be on flagging. There should always be green flagging with the orange in a completed area.

Documentation: Include your name and call sign. Use the FS 502 small form for points and the daily form for large lineal areas. Mark the area you completed with green on the DTA map, then write on your field card 'on map' and put your field card in the Danger tree box.

Remember to transfer the information onto the DTA MAP in the Ops Tent in camp. We will be available in the evenings and mornings to help you do this. **You Help Us by completing your field cards, including marking the map. We help you by answering any questions you have and providing field training.**

Sensitive Areas (Riparian, Powerlines, Structures and Private Property – in these areas, the DTA process is not the best fit. Contact your Danger Tree Specialists if you will be assessing in these areas.

Remember! The goal is to create a safe work environment for ourselves, as well as crews entering our work sites after we've left. Concise information on your flagging is a large part of achieving this goal.



Availability of Qualified Assistance for fallers

Falling and bucking trees during wildfire suppression is a high risk activity and requires *WMB Wildfire Coordination Officers, supervisors and crews* to exercise careful planning around these activities to ensure for safety. OH&S regulation 26.28, "Summoning assistance", states:

1. Qualified assistance must be readily available to fallers in case of:
 - a. Falling difficulty,
 - b. Emergency or
 - c. Injury.
2. Fallers and buckers must have an effective means to summon assistance.

"Qualified" means being knowledgeable of the work, the hazards involved and the means to control the hazards, by reason of education, training, experience or a combination thereof.

What does this mean to WMB?

WMB complies with the *emergency* and *injury* in its daily chainsaw operations by having all crew members trained in emergency response, first aid protocols and radio communications.

WMB also complies with assistance in the event of *falling difficulty* during large fire operations, project work and fuel management projects by having multiple fallers on hand and readily available to help.

What about Initial Attack crews with one faller?

When responding to a single-crew, developing initial attack fire, it is sometimes not possible to have another faller readily available.

In that context of responding to a fire emergency, one faller can undertake limited falling without the assistance of another faller if other crew members are trained in bucking, injury and emergency response protocols.

When should I consider faller assistance?

When responding to an emergency initial attack fire, the crew leader and faller will request for another faller if:

1. There is a falling difficulty beyond the faller's ability and a "no work zone" around the falling difficulty is not a reasonable option.
2. There is an extensive amount of danger tree falling required, or prolonged falling work is anticipated during suppression of the wildfire.
3. Timber type and terrain on wildfire is beyond the faller's demonstrated qualification level.

When deploying Initial Attack crews with one faller, Wildfire Coordination Officers will provide assistance to the faller, upon request with:

1. Another WMB crew with a qualified faller
2. A single resource WMB qualified faller
3. A single resource qualified contract faller

IF IN DOUBT BACK OUT AND SEEK QUALIFIED ASSISTANCE



K20637 Contact List

Position	Last Name	First Name	Camp	Company or Call Sign	Cell Phone #
IMT					
IC	s.22		Clinton		s.22
Info Officer			Clinton		
Safety Officer			Clinton		
Safety Officer			Cache Creek		
Safety Officer			Clinton		
Range Liaison			Clinton		
Plans Section Chief			Clinton		
Plans Chief Trainee			Clinton		
FBAN			Clinton		
Logs Section Chief					
Logistics Chief Trainee			Clinton		
Finance Section Chief			Clinton		
Ops Section Chief			Clinton		
Deputy Ops			Cache Creek		
Ops Chief Trainee			Clinton		
Air Ops Branch Director			Clinton		
ASGS			Clinton		
NWT AREP					
NZ AREP			Clinton		
Aussie AREP			Cache Creek		
PLANS (FireK20637PL@gov.bc.ca)					
Situation Unit Leader	s.22		Clinton		s.22
Resource Unit Leader			Clinton		
Resource Unit Leader			Clinton		
Doc Unit Leader			Clinton		
GIS Specialist			Clinton		
Deputy FBAN			Clinton		
Contract Monitor Specialist			Clinton		
Situation Unit Leader (South)			Cache Creek		
Demob Unit Leader			Cache Creek		
GIS Specialist (South)			Cache Creek		
DTS			Clinton		
DTS Assistant			Cache Creek		
Advanced Planning Unit			Cache Creek		
FBAN (APU)			Cache Creek		
Plans Chief (APU)			Cache Creek		
Ops Chief (APU)			Cache Creek		
LOGISTICS (FireK20637LO@gov.bc.ca)					
Service Branch Director	s.22		Clinton		s.22
Ground Support Unit Leader			Clinton		
Supply Unit Leader			Clinton		
Warehouse Manager			Clinton		
Camp Manager			Clinton		
Camp Manager Trainee			Clinton		
Logs Assistant South			Clinton		
Recovery			Clinton		
Greyco			Clinton		
Service Branch (South)			Cache Creek		
Support Branch (South)			Cache Creek		
Warehouse Assistant			Cache Creek		
Camp Manager			Cache Creek		
FINANCE					
Procurement TR	s.22		Clinton		s.22
Procurement UL			Clinton		

Position	Last Name	First Name	Camp	Company or Call Sign	Cell Phone #
Cost Unit Leader	s.22		Clinton		s.22
Time UL			Clinton		
Personnel Time Recorder			Clinton		
Time Recorder			Clinton		
OPERATIONS					
Ops Branch Dir West	s.22		Clinton		s.22
Deputy Ops BD West			Clinton		
Ops Branch Dir East			Cache Creek		
Ops Branch Director North			Clinton		
Ignition Specialist			Cache Creek		
Hotel 73 Ignition Branch			Clinton		
DIV O			Cache Creek		
DIV A			Clinton		
DIV B					
DIV E			Clinton		
Div E			Cache Creek		
DIV F			Clinton	s.15	
DIV D & C			Clinton		
DIV N				s.15	
DIV Q			Cache Creek		
DIV R			Cache Creek		
STL			Cache Creek		
DIV S			Cache Creek		
Task Force Leader			Cache Creek		
Strike Team Leader			Cache Creek		
Task Force Leader – Nights			Cache Creek		
Strike Team Leader			Clinton		
Quebec UC (20)			Cache Creek		
Quebec UC (20)			Cache Creek		
New Hampshire/Mas UC			Clinton		
New Zealand C-158					
New Zealand C-159					
New Zealand UC (10)					
Aussie Team 1 (20)			Cache Creek		
Aussie Team 2 (20)			Cache Creek		
Sierras UC			Clinton		
Night Ops			Clinton		
Greyco 6					
Nicola Knights			Cache Creek		
Thunderbirds				s.15	
FireDevils 19			Cache Creek		
Fire Brigade 5			Clinton		
Whitecourt UC			Clinton		
Saskatchewan IA			Clinton	s.15	
Saskatchewan			Clinton		
Contract Crew			Clinton		
Contract Crew			Clinton		
Contract Crew					
Contract Crew			Cache Creek		
Firestorm 9			Clinton		
Contract Crew			Clinton		
Kamloops H73			Clinton		
NW Hotel			Cache Creek		
Hotel 72			Clinton		
Contract Crew			Cache Creek		

Position	Last Name	First Name	Camp	Company or Call Sign	Cell Phone #
Contract Crew	s.22		Cache Creek	s.15	s.22
Contract Crew			Cache Creek		
Contract Crew			Cache Creek		
Contract Crew			Cache Creek		
Contract Crew			Cache Creek		
Contract Crew			Clinton		
Contract Crew			Clinton		
Contract Crew			Clinton		
Contract Crew			Clinton		
Contract Crew			Clinton		
Contract Crew			Clinton		
Contract Crew			Clinton		
Contract Crew			Clinton		
Contract Crew			Clinton		
Contract Crew			Clinton		
Contract Crew			Clinton		
Contract Crew			Clinton		
Contract Crew			Clinton		
Contract Crew			Clinton		
Falling OPs					
Falling Coordinator	s.22		Clinton	s.15	s.22
DTA/DTF			Clinton		
DTA/DTF			Clinton		
DTA/DTF			Cache Creek		
DTA/DTF			Clinton		
DTA/DTF			Clinton		
DTA/DTF			Clinton		
DTA/DTF			Clinton		
DTA/DTF			Clinton		
DTA/DTF			Clinton		
DTA/DTF			Clinton		
DTA/DTF			Clinton		
DTA/DTF			Clinton		
DTF			Clinton		
Fall Line Golf			Clinton		
DTS			Clinton		
DTS Assistant			Cache Creek	s.15	
Air Branch					
HLCO	s.22		Clinton		s.22
HLCO			Clinton		
HLCO			Cache Creek		
HLCO			Clinton		
HEBM			Clinton		
HEBM			Clinton		
HLCO			Clinton		
HEBM			Clinton		
HLCO			Clinton		
HLCO					701426300370
Equipment/Structural					
Equipment Branch Director	s.22		Clinton		s.22
Equip Grp Sup West			Clinton		
Equip Grp Sup North			Clinton		
Equip Group Supply			Cache Creek		
Equip Group Supply East			Cache Creek		
Equip Group Supply East			Cache Creek		
Equip Group Supply West			Clinton		
Equip Group Supply			Cache Creek		
Equip Group Supply			Cache Creek		
Equip Night Branch			Clinton		
Line Locator – North			Clinton		
Line Locator – West			Clinton		

Position	Last Name	First Name	Camp	Company or Call Sign	Cell Phone #
Line Locator - East	s.22		Cache Creek	s.22	
SPC Crew			Clinton		
MEDICS					
Cache Creek Camp – day	s.22		Clinton	s.15	s.22
Cache Creek Camp – night			Clinton		
Chicken Farm – day			Clinton		
Staging 5.5k – day			Clinton		
Loon Lk Jct – night			Clinton		
Airport – day			Clinton		
Clinton Camp – day			Clinton		
Clinton Camp – night			Clinton		
			Clinton		
			Clinton		

s.15,s.22

