

herd			HERD_NAME_CURRENT			DU	LPU
herd #	#_subgroup	HERD_NAME_HISTORIC		POPULATION			
1	1	South Selkirks	South Selkirks	Southern Mountain_southern group	9	9	Southwest Kootenay
2	2	Purcells South	Purcells South	Southern Mountain_southern group	9	9	Southeast Kootenay
3	3	Purcell Central	Purcell Central	Southern Mountain_southern group	9	9	Southeast Kootenay
4	4	Duncan	Duncan	Southern Mountain_southern group	9	9	Central Kootenay
5	5	Nakusp (Central Selkirk)	Nakusp (Central Selkirk)	Southern Mountain_southern group	9	9	Central Kootenay
6	6	Monashee	Monashee	Southern Mountain_southern group	9	9	South Monashee
7	7	Central Rockies	Central Rockies	Southern Mountain_southern group	9	9	Kinbasket
8	8	Columbia South	Columbia South	Southern Mountain_southern group	9	9	Revelstoke Shuswap
9	9	Frisby-Boulder	Frisby-Boulder	Southern Mountain_southern group	9	9	Revelstoke Shuswap
10	10	Columbia North	Columbia North	Southern Mountain_southern group	9	9	Revelstoke Shuswap
11	11	Groundhog	Groundhog	Southern Mountain_southern group	9	9	Wells Gray Thompson
12	12	Wells Gray north	Wells Gray north	Southern Mountain_southern group	9	9	Quesnel Highlands
13	13	Wells Gray south	Wells Gray south	Southern Mountain_southern group	9	9	Wells Gray Thompson
14	14	Barkerville	Barkerville	Southern Mountain_southern group	9	9	Quesnel Highlands
15	15	North Cariboo	North Cariboo	Southern Mountain_southern group	9	9	Upper Fraser
16	16	Narrow Lake	Narrow Lake	Southern Mountain_southern group	9	9	Upper Fraser
17	17	George Mtn	George Mtn	Southern Mountain_southern group	9	9	Upper Fraser
18	18a	Hart Ranges	Hart Ranges	Southern Mountain_southern group	9	9	Hart South
18	18b	Parsnip	Parsnip	Southern Mountain_southern group	9	9	Parsnip
19	19	Narraway	Narraway	Southern Mountain_central group	8	8	Narraway
20	20	Quintette	Quintette	Southern Mountain_central group	8	8	Quintette
21	21	Kennedy Siding	Kennedy Siding	Southern Mountain_central group	8	8	Pine River
22	22	Burnt Pine	Burnt Pine	Southern Mountain_central group	8	8	Pine River
23	23	Moberly	Moberly	Southern Mountain_central group	8	8	Pine River
24	24	Scott	Scott	Southern Mountain_central group	8	8	Pine River
25	25	Graham	Graham	Southern Mountain_northern group	7	7	Graham
26	26	Chinchaga	Chinchaga	Boreal	6	6	Chinchaga

Herd Estimate Year OR Sub-population Estimate Year	Herd Estimate OR Sub-population Estimate	Herd Estimate Range OR Sub-population Estimate Range	Herd Estimate Description OR Sub- population_Estimate_Description	Herd Trend_Current OR Sub- population_Trend_Current
2018	3		Observed - survey count	Decreasing
2018	4		Observed - survey count	Stable
2005	0		Observed - survey count	Extirpated
na	na		na	na
2018	31		Observed - survey count	Deceasing
2016	1		Observed - survey count	Deceasing
2008	3		Observed - survey count	Deceasing
2016	4		Observed - survey count	Deceasing
2013	11		Observed - survey count	Deceasing
2017	147		Observed - survey count	Stable
2018	23		Estimate -SCF	Stable-to-Increasing
2018	224		Estimate - expert	Stable
2018	121		Estimate - expert	Stable-to-Decreasing
2018	58		Estimate - SCF	Stable
2018	186		Estimate - SCF	Decreasing
2018	19		Observed - survey count	Decreasing
2003	0		Observed - survey count	Extirpated
2016	246		Estimate - SCF	Decreasing
2016	129		Estimate - SCF	Stable
2018	30		Estimate - Expert	stable
2018	73		Estimate - SCF	increasing
2018	65		Observed - survey count	increasing
2014	0		Observed - survey count	Extirpated
2018	66		Observed - survey count	increasing
2018	na	na	na	na
2016	230		Estimate - expert	Decreasing
2018	123		Observed - minimum count	Decreasing

**Herd Estimate Trend\_Long\_Term**  
**OR**

**Sub-population\_Trend\_Long Term**

**RISK\_STATUS**

Decreasing	Red/Threatened
Decreasing	Red/Threatened
Extirpated	Extirpated (2005)
na	Red/Threatened
Decreasing	Red/Threatened
Decreasing	Red/Threatened
Decreasing	Red/Threatened
Decreasing	Red/Threatened
Decreasing	Red/Threatened
Decreasing	Red/Threatened
Decreasing	Red/Threatened
Decreasing	Red/Threatened
Stable	Red/Threatened
Decreasing	Red/Threatened
Decreasing	Red/Threatened
Extirpated	Extirpated (2003)
Decreasing	Red/Threatened
Decreasing	Red/Threatened
Decreasing	Blue/Threatened
Decreasing	Blue/Threatened
Decreasing	Blue/Threatened
Extirpated	Blue/Threatened
Decreasing	Blue/Threatened
na	Blue/Threatened
Decreasing	Blue/Threatened
Decreasing	Red/Threatened

27	27	Snake-Sahtahneh	Snake-Sahtahneh	Boreal	6	Snake-Sahtahneh
28	28	Parker	Fort Nelson west	Boreal	6	Westside Ft Nelson
29	29	Prophet	Fort Nelson west	Boreal	6	Westside Ft Nelson
30	30	Maxhamish	Maxhamish	Boreal	6	Maxhamish
31	31	Calendar	Calendar	Boreal	6	Calendar
32	32	Itcha-Ilgachuz	Itcha-Ilgachuz	Southern Mountain_northern group	7	Chilcotin
33	33	Charlotte Alplands	Charlotte Alplands	Southern Mountain_northern group	7	Chilcotin
34	34	Rainbows	Rainbows	Southern Mountain_northern group	7	Chilcotin
35	35	Tweedsmuir	Tweedsmuir	Southern Mountain_northern group	7	Tweedsmuir
36	36	Telkwa	Telkwa	Southern Mountain_northern group	7	Telkwa
37	37	Takla	Takla	Southern Mountain_northern group	7	Takla
38	38	Wolverine	Wolverine	Southern Mountain_northern group	7	Wolverine
39	39	Chase	Chase	Southern Mountain_northern group	7	Chase
40	40	Thudade	Thudade	Northern Mountain	7	Thudade
41	41	Finlay	Finlay	Northern Mountain	7	Finlay
42	42	Pink Mountain	Pink Mountain	Northern Mountain	7	Pink Mountain
43	43	Muskwa	Muskwa	Northern Mountain	7	Muskwa
44	44	Gataga	Gataga	Northern Mountain	7	Gataga
45	45	Frog	Frog	Northern Mountain	7	Frog
46	46	Rabbit	Rabbit	Northern Mountain	7	Rabbit
47	47	Liard Plateau	Liard Plateau	Northern Mountain	7	Liard Plateau
48	48	Horseranch	Horseranch	Northern Mountain	7	Horseranch
49	49	Little Rancheria	Little Rancheria	Northern Mountain	7	Little Rancheria
50	50	Swan Lake	Swan Lake	Northern Mountain	7	Swan Lake
51	51	Level-Kawdy	Level-Kawdy	Northern Mountain	7	Level Kawdy
52	52	Atlin	Atlin	Northern Mountain	7	Atlin
53	53	Carcross	Carcross	Northern Mountain	7	Carcross
54	54	Tsenaglode	Tsenaglode	Northern Mountain	7	Tsenaglode
55	55	Edziza	Edziza	Northern Mountain	7	Edziza
56	56	Spatsizi	Spatsizi	Northern Mountain	7	Spatsizi

2018	166		Observed - minimum count	Decreasing
2018	14		Observed - minimum count	Decreasing
2018	9		Observed - minimum count	Decreasing
2018	74		Observed - minimum count	Decreasing
2018	56		Observed - minimum count	Decreasing
2017	784		Estimate - SCF	Decreasing
2001	<25		Estimate - expert	Decreasing
2016	32		Observed - survey count	Decreasing
2018	175*	150-200	Estimate - expert	Decreasing
2018	26	22-30	Estimate - expert	Increasing
2018	49		Estimate - SCF	Decreasing
2018	266	249-295.4	Estimate - expert	Decreasing
2017	290		Estimate - SCF	Decreasing
2015	90		Observed - minimum count	Unknown
2018	<25		Estimate - expert	Unknown
2018	241		Observed - minimum count*	Unknown
2018	92		Observed - minimum count*	Unknown
2001	338		Observed - minimum count	Unknown
2000	150		Estimate - expert	Unknown
2007	1133		Observed - minimum count	Unknown
2011	120		Observed - survey count	Decreasing
1999	600*	400-800	Estimate - expert	Unknown
1999	1200*	800-1600	Estimate - expert	Unknown
2007	700*	600-800	Estimate - expert	Unknown
1999	1500*	1000-2000	Estimate - expert	Unknown
2007	800*	600-1000	Estimate - expert	Unknown
2015	860*	720-1000	Estimate - expert	Unknown
2015	825*	750-900	Estimate - expert	Unknown
2017	75*	50-100	Estimate - expert	Unknown
1996	3000*	2000-4000	Estimate - expert	Unknown

Decreasing	Red/Threatened
Decreasing	Red/Threatened
Decreasing	Red/Threatened
Decreasing	Red/Threatened
Decreasing	Red/Threatened
Decreasing	Blue/Threatened
Decreasing	Blue/Threatened
Decreasing	Blue/Threatened
Decreasing	Blue/Threatened
Decreasing	Blue/Threatened
Decreasing	Blue/Threatened
Decreasing	Blue/Threatened
Unknown	Blue/Special
Unknown	Blue/Special
Decreasing	Blue/Special
Decreasing	Blue/Special
Stable	Blue/Special
Unknown	Blue/Special
Increasing	Blue/Special
Decreasing	Blue/Special
Unknown	Blue/Special
Unknown	Blue/Special
Unknown	Blue/Special
Unknown	Blue/Special
Unknown	Blue/Special
Increasing	Blue/Special
Increasing	Blue/Special
Unknown	Blue/Special
Unknown	Blue/Special
Unknown	Blue/Special

herd				
herd #	#_subgroup	HERD_NAME_HISTORIC	HERD_NAME_CURRENT	BC_ECOTYPE
1	1	South Selkirks	South Selkirks	Mountain
2	2	Purcells South	Purcells South	Mountain
3	3	Purcell Central	Purcell Central	Mountain
4	4	Duncan	Duncan	Mountain
5	5	Nakusp (Central Selkirk)	Nakusp (Central Selkirk)	Mountain
6	6	Monashee	Monashee	Mountain
7	7	Central Rockies	Central Rockies	Mountain
8	8	Columbia South	Columbia South	Mountain
9	9	Frisby-Boulder	Frisby-Boulder	Mountain
10	10	Columbia North	Columbia North	Mountain
11	11	Groundhog	Groundhog	Mountain
12	12	Wells Gray north	Wells Gray north	Mountain
13	13	Wells Gray south	Wells Gray south	Mountain
14	14	Barkerville	Barkerville	Mountain
15	15	North Cariboo	North Cariboo	Mountain
16	16	Narrow Lake	Narrow Lake	Mountain
17	17	George Mtn	George Mtn	Mountain
18	18a	Hart Ranges	Hart Ranges	Mountain
18	18b	Parsnip	Parsnip	Mountain
19	19	Narraway	Narraway	Northern
20	20	Quintette	Quintette	Northern
21	21	Kennedy Siding	Kennedy Siding	Northern
22	22	Burnt Pine	Burnt Pine	Northern
23	23	Moberly	Moberly	Northern
24	24	Scott	Scott	Northern
25	25	Graham	Graham	Northern
26	26	Chinchaga	Chinchaga	Boreal
27	27	Snake-Sahtahneh	Snake-Sahtahneh	Boreal
28	28	Parker	Fort Nelson west	Boreal
29	29	Prophet	Fort Nelson west	Boreal
30	30	Maxhamish	Maxhamish	Boreal
31	31	Calendar	Calendar	Boreal
32	32	Itcha-Ilgachuz	Itcha-Ilgachuz	Northern
33	33	Charlotte Alplands	Charlotte Alplands	Northern

<b>COSEWIC_Eco</b>	<b>POPULATION</b>	<b>DU</b>	<b>LPU</b>
<b>logical Area</b>			
SMNEA	Southern Mountain_southern group	9	Southwest Kootenay
SMNEA	Southern Mountain_southern group	9	Southeast Kootenay
SMNEA	Southern Mountain_southern group	9	Southeast Kootenay
SMNEA	Southern Mountain_southern group	9	Central Kootenay
SMNEA	Southern Mountain_southern group	9	Central Kootenay
SMNEA	Southern Mountain_southern group	9	South Monashee
SMNEA	Southern Mountain_southern group	9	Kinbasket
SMNEA	Southern Mountain_southern group	9	Revelstoke Shuswap
SMNEA	Southern Mountain_southern group	9	Revelstoke Shuswap
SMNEA	Southern Mountain_southern group	9	Revelstoke Shuswap
SMNEA	Southern Mountain_southern group	9	Wells Gray Thompson
SMNEA	Southern Mountain_southern group	9	Quesnel Highlands
SMNEA	Southern Mountain_southern group	9	Wells Gray Thompson
SMNEA	Southern Mountain_southern group	9	Quesnel Highlands
SMNEA	Southern Mountain_southern group	9	Upper Fraser
SMNEA	Southern Mountain_southern group	9	Upper Fraser
SMNEA	Southern Mountain_southern group	9	Upper Fraser
SMNEA	Southern Mountain_southern group	9	Hart South
SMNEA	Southern Mountain_southern group	9	Parsnip
SMNEA	Southern Mountain_central group	8	Narraway
SMNEA	Southern Mountain_central group	8	Quintette
SMNEA	Southern Mountain_central group	8	Pine River
SMNEA	Southern Mountain_central group	8	Pine River
SMNEA	Southern Mountain_central group	8	Pine River
SMNEA	Southern Mountain_central group	8	Pine River
SMNEA	Southern Mountain_central group	8	Pine River
SMNEA	Southern Mountain_northern group	7	Graham
Boreal	Boreal	6	Chinchaga
Boreal	Boreal	6	Snake-Sahtahneh
Boreal	Boreal	6	Westside Ft Nelson
Boreal	Boreal	6	Westside Ft Nelson
Boreal	Boreal	6	Maxhamish
Boreal	Boreal	6	Calendar
SMNEA	Southern Mountain_northern group	7	Chilcotin
SMNEA	Southern Mountain_northern group	7	Chilcotin

<b>COSWEIC designation</b>	<b>Survey Year</b>	<b>Minimum Count</b>	<b>Survey Count</b>	<b>Survey Estimate</b>	<b>Survey Type</b>
Southern Mountain - southern	2018		3	---	
Southern Mountain - southern	2018		4	---	
Southern Mountain - southern	2005		0	---	
Southern Mountain - southern	na		na	na	
Southern Mountain - southern	2018		31	---	
Southern Mountain - southern	2016		1	---	
Southern Mountain - southern	2008		3	---	
Southern Mountain - southern	2016		4	---	
Southern Mountain - southern	2013		11	---	
Southern Mountain - southern	2017		147	---	
Southern Mountain - southern	2018		19	23	
Southern Mountain - southern	2018		190	222	
Southern Mountain - southern	2018		92	111	
Southern Mountain - southern	2018		41	58	
Southern Mountain - southern	2018		139	186	
Southern Mountain - southern	2018		19	19	
Southern Mountain - southern	2003		0	---	
Southern Mountain - southern	2016		197	246	
Southern Mountain - southern	2016		110	129	
					estimate- most caribou are collared
Southern Mountain - north central	2018		26	30	
Southern Mountain - north central	2018		67	73	mark resight
					total count-camera
Southern Mountain - north central	2018		65	65	
Southern Mountain - north central	2014		1		Observed
					total count- most caribou are collared
Southern Mountain - north central	2018		66	66	
Southern Mountain - north central	2018		na	na	na
	2016				
Southern Mountain - north central			182	230	mark resight
Boreal	2018	123			
Boreal	2018	166			
Boreal	2018	14			
Boreal	2018	9			
Boreal	2018	74			
Boreal	2018	56			
Southern Mountain - west central	2017		451	784	
Southern Mountain - west central	2001		32		

Herd Estimate Year OR Sub-population Estimate Year	Herd Estimate OR Sub-population Estimate	Herd Estimate Range OR Sub-population Estimate Range	Herd Estimate Description OR Sub- population_Estimate_Description
2018	3		Observed - survey count
2018	4		Observed - survey count
2005	0		Observed - survey count
na	na		na
2018	31		Observed - survey count
2016	1		Observed - survey count
2008	3		Observed - survey count
2016	4		Observed - survey count
2013	11		Observed - survey count
2017	147		Observed - survey count
2018	23		Estimate -SCF
2018	224		Estimate - expert
2018	121		Estimate - expert
2018	58		Estimate - SCF
2018	186		Estimate - SCF
2018	19		Observed - survey count
2003	0		Observed - survey count
2016	246		Estimate - SCF
2016	129		Estimate - SCF
2018	30		Estimate - Expert
2018	73		Estimate - SCF
2018	65		Observed - survey count
2014	0		Observed - survey count
2018	66		Observed - survey count
2018	na	na	na
2016	230		Estimate - expert
2018	123		Observed - minimum count
2018	166		Observed - minimum count
2018	14		Observed - minimum count
2018	9		Observed - minimum count
2018	74		Observed - minimum count
2018	56		Observed - minimum count
2017	784		Estimate - SCF
2001	<25		Estimate - expert

<b>Herd Trend_Current</b> <b>OR</b> <b>Sub-</b> <b>population_Trend_Current</b>	<b>Herd Estimate Trend_Long_Term</b> <b>OR</b> <b>Sub-population_Trend_Long Term</b>	<b>RISK_STATUS</b>
Decreasing	Decreasing	Red/Threatened
Stable	Decreasing	Red/Threatened
Extirpated	Extirpated	Extirpated (2005)
na	na	Red/Threatened
Deceasing	Decreasing	Red/Threatened
Deceasing	Decreasing	Red/Threatened
Deceasing	Decreasing	Red/Threatened
Deceasing	Decreasing	Red/Threatened
Deceasing	Decreasing	Red/Threatened
Stable	Decreasing	Red/Threatened
Stable-to-Increasing	Decreasing	Red/Threatened
Stable	Decreasing	Red/Threatened
Stable-to-Decreasing	Decreasing	Red/Threatened
Stable	Stable	Red/Threatened
Decreasing	Decreasing	Red/Threatened
Decreasing	Decreasing	Red/Threatened
Extirpated	Extirpated	Extirpated (2003)
Decreasing	Decreasing	Red/Threatened
Stable	Decreasing	Red/Threatened
stable	Decreasing	Blue/Threatened
increasing	Decreasing	Blue/Threatened
increasing	Decreasing	Blue/Threatened
Extirpated	Extirpated	Blue/Threatened
increasing	Decreasing	Blue/Threatened
na	na	Blue/Threatened
Decreasing	Decreasing	Blue/Threatened
Decreasing	Decreasing	Red/Threatened
Decreasing	Decreasing	Red/Threatened
Decreasing	Decreasing	Red/Threatened
Decreasing	Decreasing	Red/Threatened
Decreasing	Decreasing	Red/Threatened
Decreasing	Decreasing	Red/Threatened
Decreasing	Decreasing	Blue/Threatened
Decreasing	Decreasing	Blue/Threatened

34	34	Rainbows	Rainbows	Northern
35	35	Tweedsmuir	Tweedsmuir	Northern
36	36	Telkwa	Telkwa	Northern
37	37	Takla	Takla	Northern
38	38	Wolverine	Wolverine	Northern
39	39	Chase	Chase	Northern
40	40	Thudade	Thudade	Northern
41	41	Finlay	Finlay	Northern
42	42	Pink Mountain	Pink Mountain	Northern
43	43	Muskwa	Muskwa	Northern
44	44	Gataga	Gataga	Northern
45	45	Frog	Frog	Northern
46	46	Rabbit	Rabbit	Northern
47	47	Liard Plateau	Liard Plateau	Northern
48	48	Horseranch	Horseranch	Northern
49	49	Little Rancheria	Little Rancheria	Northern
50	50	Swan Lake	Swan Lake	Northern
51	51	Level-Kawdy	Level-Kawdy	Northern
52	52	Atlin	Atlin	Northern
53	53	Carcross	Carcross	Northern
54	54	Tsenaglude	Tsenaglude	Northern
55	55	Edziza	Edziza	Northern
56	56	Spatsizi	Spatsizi	Northern

SMNEA	Southern Mountain_northern group	7	Chilcotin
SMNEA	Southern Mountain_northern group	7	Tweedsmuir
SMNEA	Southern Mountain_northern group	7	Telkwa
SMNEA	Southern Mountain_northern group	7	Takla
SMNEA	Southern Mountain_northern group	7	Wolverine
SMNEA	Southern Mountain_northern group	7	Chase
NMNEA	Northern Mountain	7	Thudade
NMNEA	Northern Mountain	7	Finlay
NMNEA	Northern Mountain	7	Pink Mountain
NMNEA	Northern Mountain	7	Muskwa
NMNEA	Northern Mountain	7	Gataga
NMNEA	Northern Mountain	7	Frog
NMNEA	Northern Mountain	7	Rabbit
NMNEA	Northern Mountain	7	Liard Plateau
NMNEA	Northern Mountain	7	Horseranch
NMNEA	Northern Mountain	7	Little Rancheria
NMNEA	Northern Mountain	7	Swan Lake
NMNEA	Northern Mountain	7	Level Kawdy
NMNEA	Northern Mountain	7	Atlin
NMNEA	Northern Mountain	7	Carcross
NMNEA	Northern Mountain	7	Tsenaglude
NMNEA	Northern Mountain	7	Edziza
NMNEA	Northern Mountain	7	Spatsizi

Southern Mountain - west central	2016		32	
	2017			
Southern Mountain - west central		146	146	
Southern Mountain - west central	2018	22	22	
	2018			
Southern Mountain - north central			44	49
Southern Mountain - north central	2018	249	234	249
Southern Mountain - north central	2017		167	290
Northern Mountain	2015	90		
Northern Mountain	2018	15		
Northern Mountain	2018	241		
Northern Mountain	2018	92		
Northern Mountain	2001	338		
Northern Mountain	2000			
Northern Mountain	2007	1133		
Northern Mountain	2011		120	
Northern Mountain	2015	133	133	Composition
Northern Mountain	2015	189	189	Composition
Northern Mountain	2015	333	333	Composition
Northern Mountain	2011	898	898	Composition
Northern Mountain	2015	446	446	Composition
Northern Mountain	2015	720	720	Composition
Northern Mountain	2015	639	639	Composition
Northern Mountain	2017	23	23	Composition
Northern Mountain	2017	1301	1301	Composition

2016	32		Observed - survey count
2018	175*	150-200	Estimate - expert
2018	26	22-30	Estimate - expert
2018	49		Estimate - SCF
2018	266	249-295.4	Estimate - expert
2017	290		Estimate - SCF
2015			
	90		Observed - minimum count
2018	<25		Estimate - expert
2018			
	241		Observed - minimum count*
2018			
	92		Observed - minimum count*
2001	338		Observed - minimum count
2000			
	150		Estimate - expert
2007	1133		Observed - minimum count
2011	120		Observed - survey count
1999	600*	400-800	Estimate - expert
1999	1200*	800-1600	Estimate - expert
2007	700*	600-800	Estimate - expert
1999	1500*	1000-2000	Estimate - expert
2007	800*	600-1000	Estimate - expert
2015	860*	720-1000	Estimate - expert
2015	825*	750-900	Estimate - expert
2017	75*	50-100	Estimate - expert
1996	3000*	2000-4000	Estimate - expert

Decreasing	Decreasing	Blue/Threatened
Decreasing Increasing	Decreasing Decreasing	Blue/Threatened Blue/Threatened
Decreasing Decreasing Decreasing	Decreasing Decreasing Decreasing	Blue/Threatened Blue/Threatened Blue/Threatened
Unknown Unknown	Unknown Unknown	Blue/Special Blue/Special
Unknown	Decreasing	Blue/Special
Unknown Unknown	Decreasing Stable	Blue/Special Blue/Special
Unknown Unknown Decreasing Unknown Unknown Unknown Unknown Unknown Unknown Unknown	Unknown Increasing Decreasing Unknown Unknown Unknown Unknown Unknown Increasing Increasing	Blue/Special Blue/Special Blue/Special Blue/Special Blue/Special Blue/Special Blue/Special Blue/Special Blue/Special Blue/Special
Unknown	Unknown	Blue/Special
Unknown	Unknown	Blue/Special
Unknown	Unknown	Blue/Special

Source	Comment
pers comm, A. Reid 2018	
pers comm, A. Reid 2018	
pers comm, L. Degroot 2018	
Degroot 2014	Duncan combined with Nakusp in 2014
	Since 2005 the Central Selkirk caribou sub population was divided into the Nakusp and Duncan blocks. Due to consistent observations of caribou that are not located in either block, the combined area will be referred to as "Central Selkirks" without further division into blocks (Degroot 2014).
pers comm, A. Reid 2018	
Oort and Laubman 2016	
McLellan	
Serouya et al. 2016	
Legebokow and Serrouya 2017	
Legebokow and Serrouya 2017	
pers. Comm Ernst 2018	
pers comm, Lirette 2018	
Pers comm Ernst 2018	Survey Estimate is observed plus estimated number based on tracks.
pers comm, Lirette 2018	
pers comm Lirette and Klaczek	: region5 Bowron = 41 count (2018) + Omineca portion
pers comm, Klaczek 2018	
Seip 2005; pers comm Klaczek 2016	
	Omineca refer to this sub population as Hart South (Hart Ranges = Parsnip + Hart South combined); 2018 results reported here are for the Hart South
Klaczek and Heard 2016	
Klaczek and Heard 2016	
	estimate- most caribou are collared; Alberta counted Narraway in Fall 2017, but that would be the March 2018 estimate
Alberta Government	
pers comm, Dale Seip 2018	
pers comm, Dale Seip 2018	total count- camera
	Last burnt pine female died in 2013, there was one lone male in 2014 but herd was functionally extirpated in 2013.
pers comm, Dale Seip 2018	
pers comm, Scott McNay 2018	total count- most caribou are collared
pers comm, Scott McNay 2018	included in Moberly count
	no 2018 survey; The 2016 population estimate is based on late winter aerial inventory of alpine complexes within the core winter range of the Graham herd (12 survey blocks between Butler Ridge and the Halfway River), an estimate of sightability, and accounting for the proportion of the collared sample located outside the survey blocks at the time of inventory (Culling and Culling 2016)
Culling and Culling 2016	
pers comm. Diane Culling 2018, Culling and Cichowski 2017	
pers comm. Diane Culling 2018, Culling and Cichowski 2017	
pers comm. Diane Culling 2018, Culling and Cichowski 2017	
pers comm. Diane Culling 2018, Culling and Cichowski 2017	
pers comm. Diane Culling 2018, Culling and Cichowski 2017	
pers comm. Diane Culling 2018, Culling and Cichowski 2017	
pers comm, Cadsand & Dodd 2017	
	2017 Estimate - expert is <25 given the decreasing trend of adjacent Itcha ilgachuz & Rainbow herds. The last survey of Charlotte Alplands was 2001 with 32 animals counted.
pers comm, Lirette 2017	

pers comm, Lirette 2017	
Roberts and Grant, 2017 Grant, 2018	Updated lambda to be available before April 30, 2018; *Population estimate & range based on 2018 survey
pers comm, Klaczek 2018 pers comm, Klaczek 2018 Anderson and Heard 2017	Risk of Extirpation. Mount Sydney Williams sub-population: 12 caribou; Mitchell subpopulation: 35 caribou Mt Blanchet: 0 caribou
Sittler et al, 2015; pers comm M pers comm, Klaczek 2018	The minimum count represents the caribou observed in areas within the Thudade boundary, as recommended by McNay; this survey would be considered incomplete as not all survey units were surveyed. calculated from Table 4 of Sittler et al 2015. recon flight prior to captures; no formal census
pers comm., Justin Strong 2018	*Minimum count observed during calf recruitment survey, not corrected for sightability - very conservative population estimate and should be used with caution
pers comm., Justin Strong 2018 Duncan 2009	*Minimum count observed during calf recruitment survey, not corrected for sightability - very conservative population estimate and should be used with caution
Duncan 2009 Duncan 2009 McNay et al. 2013	Estimate from regional biologists in 2000 based on expertise, there are no additional survey counts
Pers comm Thiessen and Grant	*Population estimate & range based on 1999 survey
Pers comm Thiessen and Grant	*Population estimate & range based on 1999 survey
Pers comm Thiessen and Grant	*Population estimate & range based on 2007 survey
Caribou_Survey-Ca34-Level-Ka	*Population estimate & range based on 1999 survey
Williams and Dixon, 2016, pers	*Population estimate & range based on 2007 survey
Williams and Dixon, 2016, pers	*Population estimate & range based on 2015 survey
Pers comm Thiessen and Grant	Report to be completed by May 15, 2018; *Population estimate & range based on 2015 survey
Pers comm Thiessen and Grant	Report in review, to be completed by May 15, 2018; *Population estimate & range based on 2017 survey
Pers comm Thiessen and Grant	Report to be completed by May 15, 2018; *Population estimate & range based on 1996 survey

Count including tracks												
	South Selkirks	Purcell South	Purcell Central	Central Selkirk (Nakusp and Duncan Combined)	Nakusp	Duncan	Monashe e South	Columbi a South	Frisby Boulder	Columbi a North	Kinbaske t South	Ground Hog
Year												
1987												
1988												59
1989												
1990												85
1991	47											
1992	47											
1993	51	44										
1994	45	54	15	148	148		10	105	36	206		
1995	52	63	15								19	37
1996	39	38	13	211	186	25		81	20	167		
1997	39	30	2	227	203	24		93	35	203	17	
1998	45	13	5									13
1999	48			181	155	26						24
2000	34	13	5									
2001												
2002	34	14	5	96	76	20	4	29	20	145	5	15
2003	41	9	6									18
2004	33	11	3	76	72	4	7	38	16	129	0	16
2005	35	10	0	75	70	5						
2006	37	16	0	83	74	9	7	26	16	125	0	23
2007	43	15	0	71	59	12		32				
2008	46			102	87	15	5	20	12	139	3	
2009	46	14	0					13				
2010	43	15		92	85	7	5					
2011	36	15					3	7	10	123		6
2012	27			89	87	2	4					
2013	27	20						6	11	152		11
2014	18	19		53						124		

Wells Grey	Allen Creek	Barkerville	North Cariboo	George Mountain	Narrow Lake	Hart Ranges	Total
		33					33
		38					97
		37					37
							85
		31					78
		27		20			94
		16	232				343
		39					806
511		12					709
		15					795
		50					923
337		26					439
276		20		0	67		797
		38		3			93
		35					35
310	22	41	236	3	61	374	1510
				0			74
331	54	32		0	23		845
		44	215	0	34	458	946
398	11	44	209	0	33	596	1707
				0	44		276
							429
							73
							247
360		60	163		34	447	1264
		75					284
289					36	341	893
							214



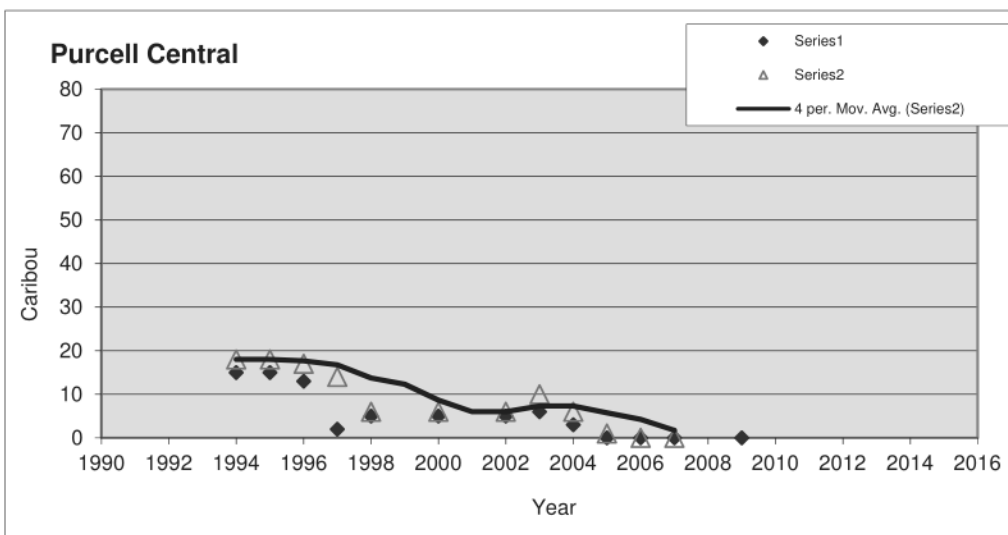
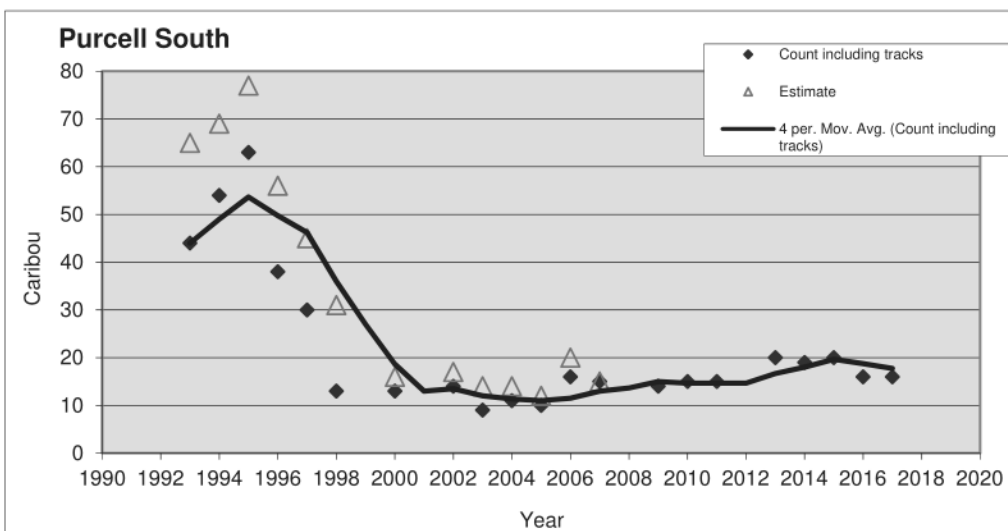
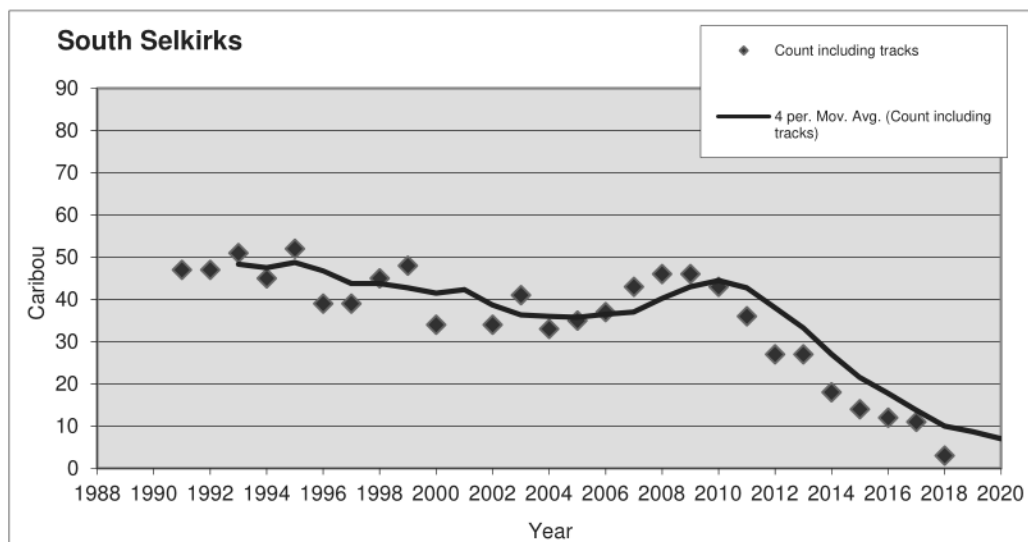
Data

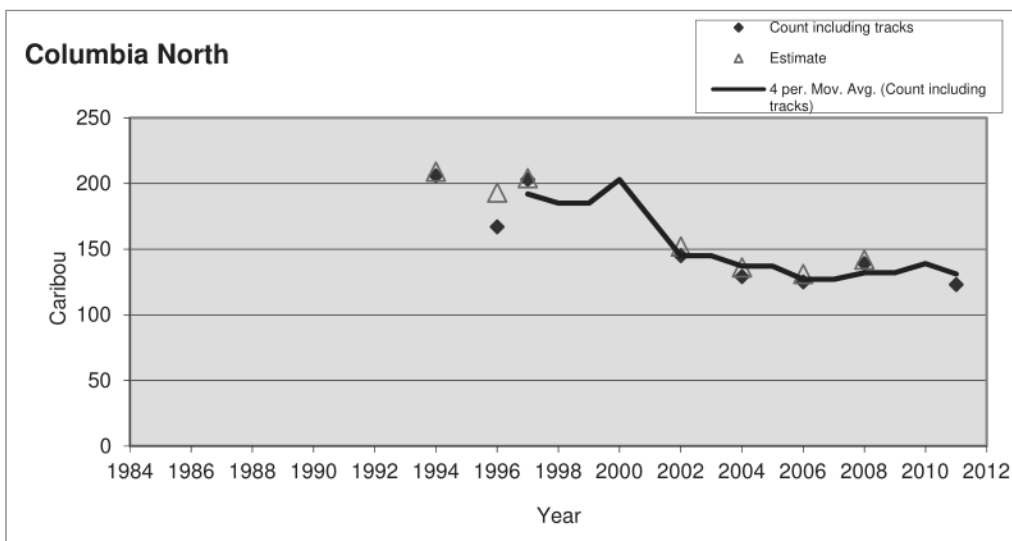
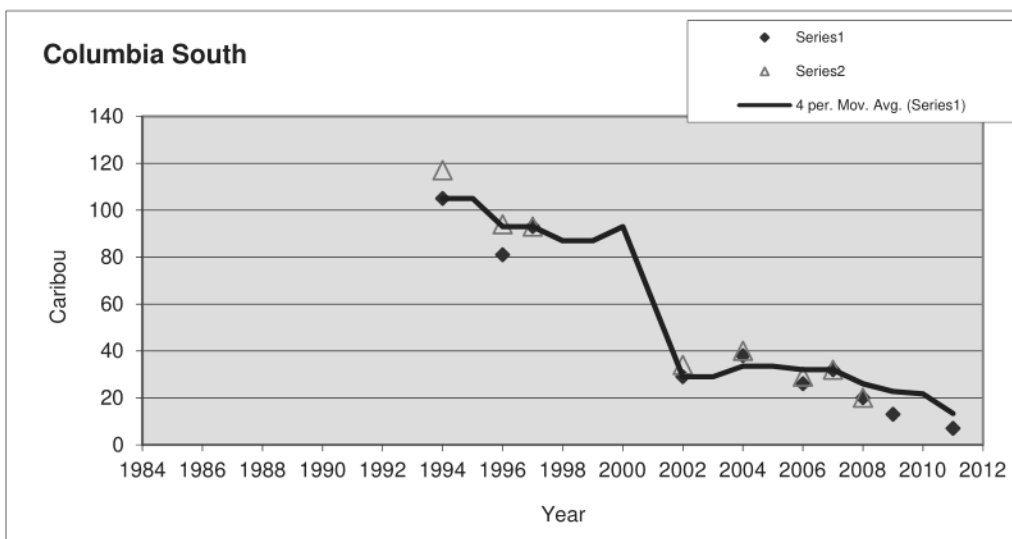
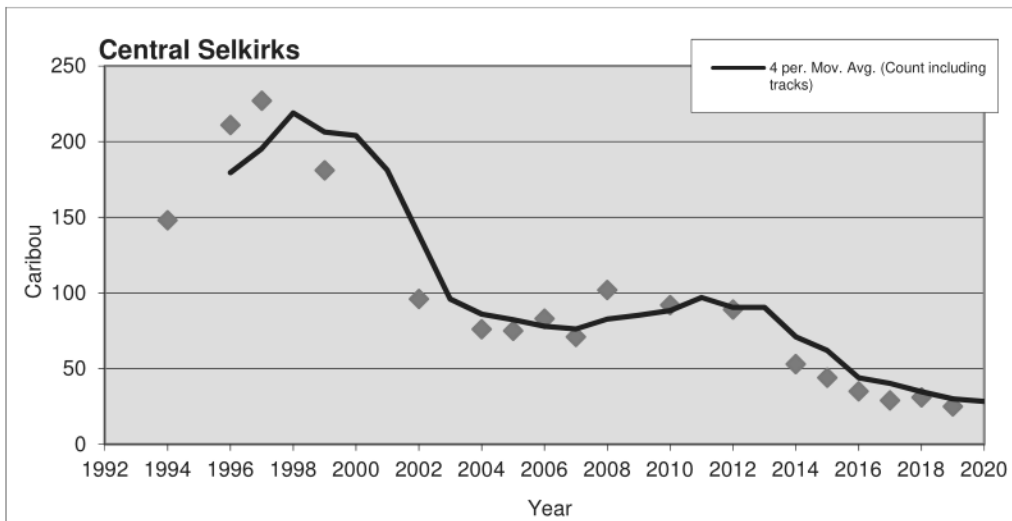
2015	14	20		44								
2016	12	16		35			1	4				19
2017	11	16		29						147		
2018	3	4		31								
2019				25								
2020												
<b>Estimate if sightability corrections are used</b>												
1987												
1988												76
1989												
1990												109
1991	47											
1992	47											
1993	51	65										
1994	45	69	18				12	114	43	206		
1995	52	77	18								25	48
1996	39	56	17		211	29		103	24	167		
1997	39	45	14		211	28		93	42	280	21	
1998	45	31	6									17
1999	48				182	30						31
2000	34	16	6									
2001												
2002	34	17	6		103	23	5	34	24	145	5	19
2003	41	14	10									23
2004	33	14	6		83	4	8	42	19	129	1	21
2005	35	12	1		81	13						
2006	37	20	0		85	9	8	38	19	138	2	30
2007	44	15	0		76	12		32				
2008	46				84	18		20		140		
2009												
2010												
2011												
2012												
2013												
2014												

							78
		51	146			375	659
							203
							38
							25
							0
		47					47
		54					130
		52					52
							109
		44					91
		38		24			109
		23	279				418
		55					562
620		17					857
		21					667
		71					844
390		37					526
441		28			81		841
		54		4			114
		49					49
516	38	58	284	4	73	451	1839
							88
355	62	45		0	28		850
		62	283	0	41	552	1080
422	33	51	267	0	40	718	1917
				0	44		223
							308
		90					

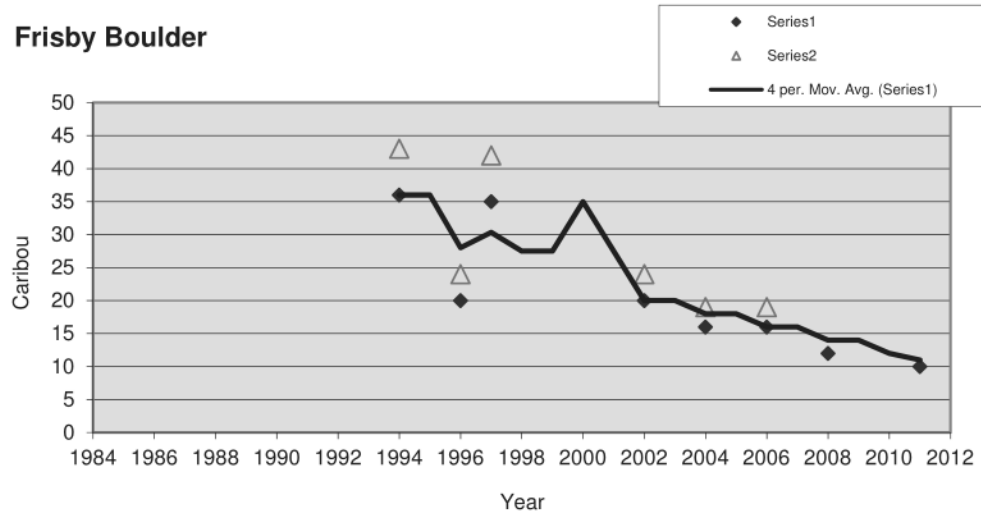
2015												
2016												
2017												
2018												
2019												
2020												

		72					

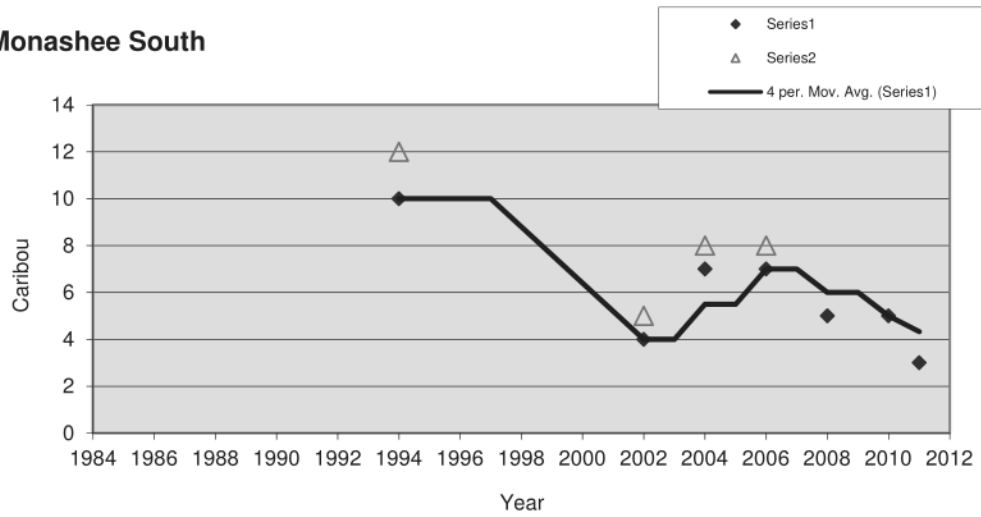




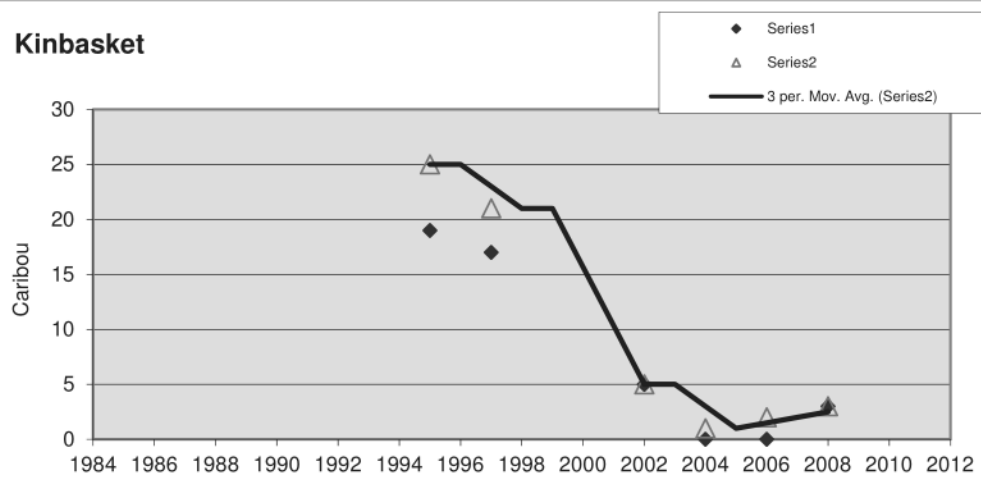
### Frisby Boulder



### Monashee South

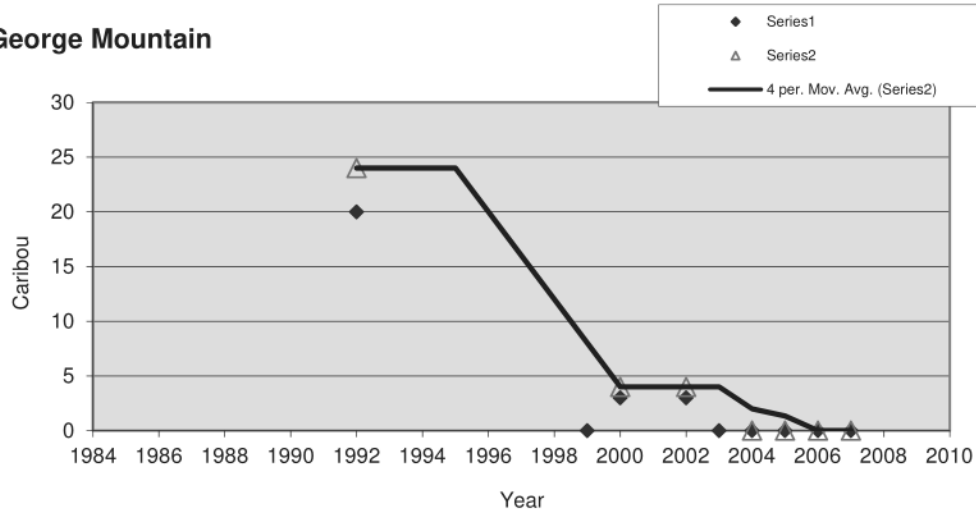


### Kinbasket

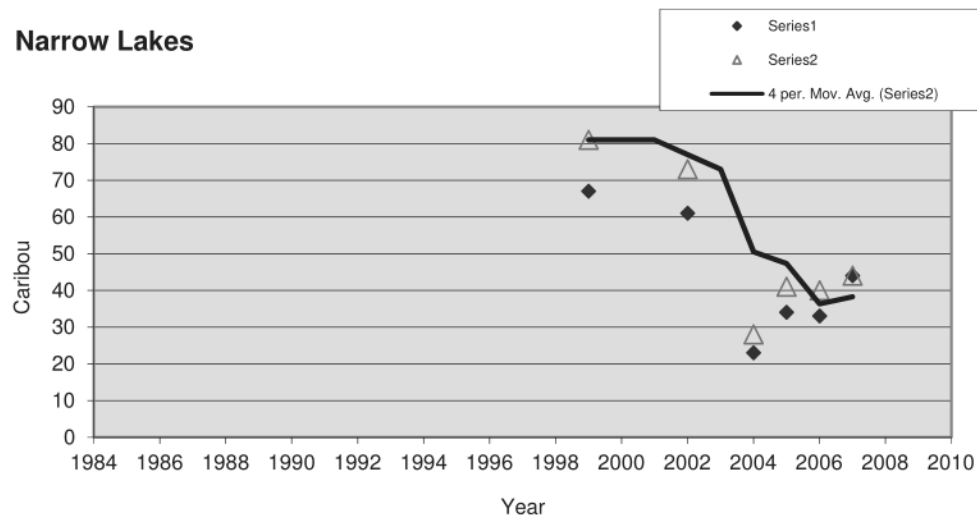


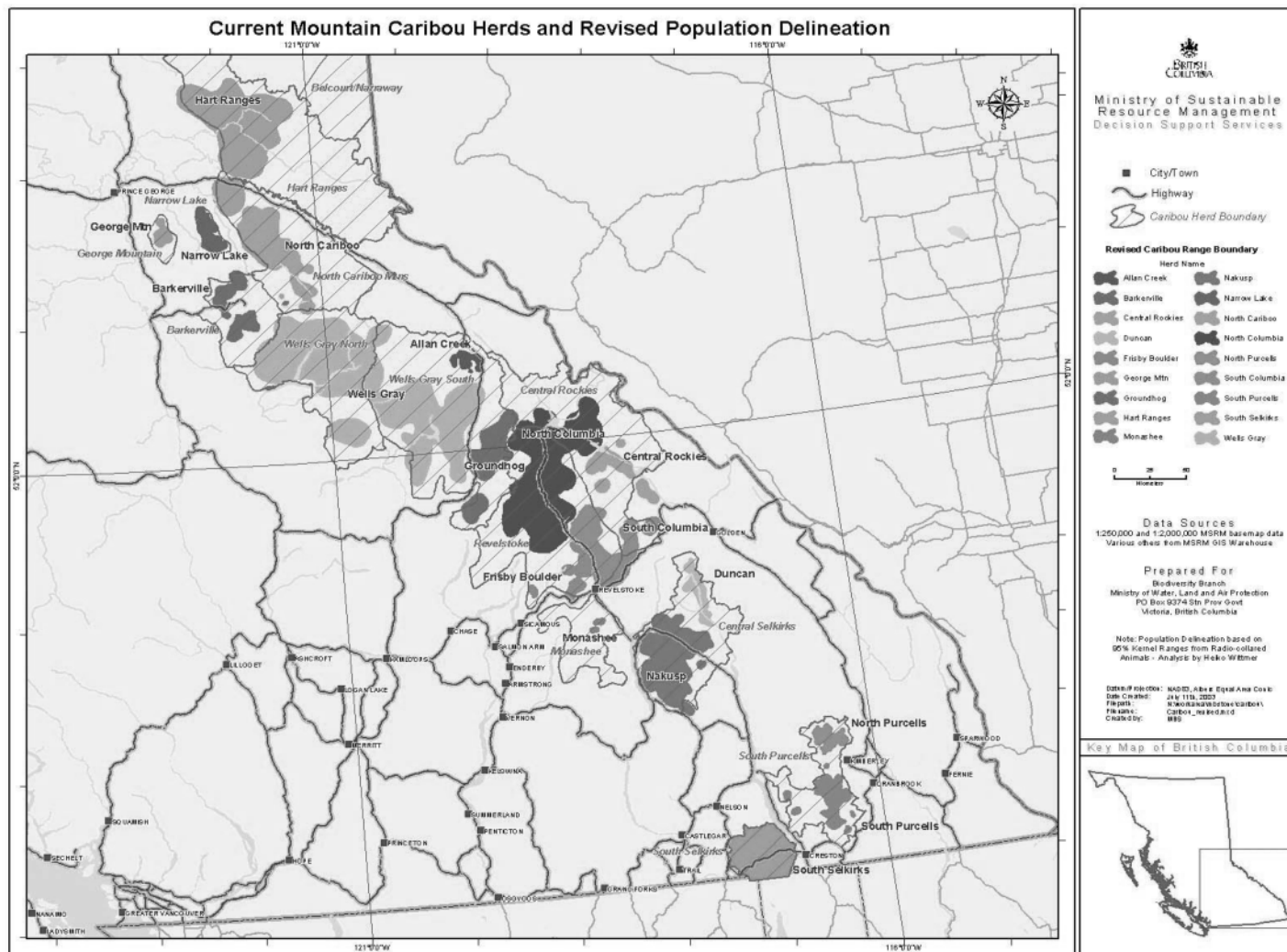
Year

### George Mountain



### Narrow Lakes





## Percent calves

Year	SS	PS	PC	Central Selkirk	NA	DU	MS	CS	FB	CN	KS	GH
1993		9.1										
1994		5.6			9.9		30	12.4	8.3	19.4		
1995		1.6									5.3	
1996		3			10.2	12		12.35	25	19.2		
1997		10.7			8.4	16.7		15.1	11.4	11.8	5.9	
1998		0										
1999					7.7	7.7						
2000		7.7										
2001												
2002	26.4	15.4	0		15.8	20		17.2	25	11.7		
2003	10	11.1										
2004	6.7	9.1			18.1		14.3	15.8	25	14		
2005		10			15.7	0						
2006	17.2	12.5			26		14.3	2.9	18.8	14.3		
2007	9.8	6.7			15.2	11		3.1				
2008	11				15.8	0	20	0	8.3	12.9	33.3	
2009	10.9	7.1						15.4				
2010	7	6.7			15.6	0				10.4		
2011	8.3	6.7						33.3	0	8.9		
2012	4.3	28.6			10.5	0	25					
2013	14.8	15						16.7	9.1	14.2		
2014	5.6			16						13.3		
2015	7.1	10.5		11.4								
2016	16.7	6.3		5.7								
2017	18.2	7.7		6.9								
2018				12.9								
2019				4								
2020												
Mean	11.6	9.1		12.24545	14.075	7.488889						

**Notes**

The 2012 flight in Purcell South was not a complete census. Only the two groups containing GPS collars were surveyed.  
The 2012 Monashee South data was from a sighting, it was not a complete census.

In 2013 the Nakusp and Duncan sub populations were combined into the Central Selkirk population

