

ROYAL COMMISSION ON INDIAN AFFAIRS FOR THE
PROVINCE OF BRITISH COLUMBIA

129822

NATHANIEL W. WHITE, K.C., CHAIRMAN
JAMES A. J. ENNA, LL.D.
S. CARMICHAEL, B.C.L., K.C.
JAMES P. SHAW, LL.A.
DAY H. MACDONALD
C. H. GIBBONS, SECRETARY



BELMONT HOUSE

ADDRESS OFFICIAL COMMUNICATIONS
TO THE SECRETARY

P.O. Box 755

TEL. 1302

VICTORIA, B.C.

PLEASE REFER TO FILE NO. 512D:

May 18th, 1916.

R. A. Renwick, Esq.,
Deputy Minister of Lands,
Victoria, B. C.



Sir:

I have the honour, by direction, to transmit herewith the tabulated abstract of Additional Lands Applications of the Williams Lake Agency together with sketch maps referred to therein. I shall be obliged if you will let me have clearance thereof at the earliest possible opportunity.

I have the honour to be,

Sir,

Your obedient servant,

C. H. Gibbons
Secretary.

Encl.:

50.	Do	Two miles square of timberland, marked "K 9" on Agency map.	Firewood and building material supply	Evidence Pp. 118, 302; Exhibit "K8."
51.	Do	Two miles square of cultivable land E. of I. R. No. 4 and marked "K 9 1/2" on Agency map.	General farming and range	Evidence Pp. 118, 119, 302, Exhibit "K8."
52.	Do	Fishing station: 1/4 mile on each side of Tsunna Lake and down Creek 1/4 mile, both sides of Creek, marked "K 10" on Agency map.	Fishing station	Evidence Pp. 119, 303.
53.	Williams Lake or Sugarcane	Tommy Bate's meadow, N. of Williams Lake I. R. No. 1 about 7 miles. (This application made to Agent Ogden after the Commission's visitation), 15 or 20 ac.	Hay land	Report of Agent on R. C. File No. 512D; Evidence P. 109.
54.	Do	Application of Soda Creek Joe for meadowland.	Meadow	Do
55.	Soda Creek	Fishing station at Tyhes Lake, debouching into Big Lake, 12 miles S. E. of I. R. No. 1, one mile square.	Fishing station	Evidence Pp. 145, 146, 147, 156, 257; Special Report of Agent on R. C. File No. 512D.
56.	Do	Meadowland approximately 9 miles E. of Soda Creek I. R. No. 1 and 200 yards from the Reserve to Tyhee Lake, 40 acres.	Hay land	Evidence P. 257; Report of Agent on R. C. File No. 512D.
57.	Do	320 acres at Peavine Flat, 4 miles N. E. of Soda Creek I. R. No. 1.	General farming and hay land	Evidence Pp. 257, 258; Report of Agent on R. C. File No. 512D.
58.	Alexandria	Small meadows from 7 to 10 miles from Reserve.	Hay land	Evidence Pp. 151, 156, 157, 158; Report of Agent on R. C. File No. 512D.
59.	Do	McKay Meadow, 9 miles W. of I. R. No. 3—three small meadows.	Hay land	Do—also evidence P. 252.
60.	Do	Johnnie Sappa's meadow, 12 miles S. W. of I. R. No. 3 and W. of location covered by Application No. 51.	Do	Do—also evidence P. 257.
61.	Do	Big Joe's Meadow, 11 miles S. W. of I. R. No. 3 and 3 miles S. E. of location covered by Application No. 60.	Do	Do—also evidence P. 253.

40.5		Not entertained: Gov.
40.5	Vacant and available.	Allowed: Three hundred (300) acres, more or less, subject to survey, on Webster Creek, approximately two miles N. W. of village on Reserve No. 1; and (b) more or less (8) acres, more or less, subject to survey, on Necausley Creek, approximately one and one-half miles E. of the one hundred acres aforesaid, to include site of Indian house and outbuildings and to border on Necausley Creek, as per sketch plan of Ashdown H. Green, B.C.L.S., numbered in accordance herewith and filed in duplicate with the Governments of Canada and of British Columbia.
40.5	Vacant and available.	Allowed: (a) One hundred (100) acres, more or less, subject to survey, on Webster Creek, approximately eight miles W. from village on Reserve No. 1; and (b) more or less (8) acres, more or less, subject to survey, on Necausley Creek, approximately one and one-half miles E. of the one hundred acres aforesaid, to include site of Indian house and outbuildings and to border on Necausley Creek, as per sketch plan of Ashdown H. Green, B.C.L.S., numbered in accordance herewith and filed in duplicate with the Governments of Canada and of British Columbia.
40.5	Vacant and available.	Allowed: Forty (40) acres, more or less, subject to survey, on Necausley Creek, approximately eight miles from village, as per sketch plan of Ashdown H. Green, B.C.L.S., numbered in accordance herewith and filed in duplicate with the Governments of Canada and of British Columbia.

Williams Lake—5

39. Stone	Meadow approximately 15 miles S. of I. R. No. 1, 160 acres, on the right bank of Brigham Creek (Chief Louis Quilt).	Hay land	Evidence Pp. 102, 103, 270; Report of Agent on R. C. File No. 512D and Exhibit K6.	85	Vacant and available.	Allowed: One hundred and eighty (180) acres, more or less, subject to survey, eleven miles S. W. of Stone Reserve No. 1, as per sketch plan of Ashdown H. Green, B.C.L.S., numbered in accordance herewith and filed in duplicate with the Governments of Canada and of British Columbia.	Apparently Clear ENTERED ON MAP 14B no previous application W.A.R.	
40. Do	Meadow approximately 7 miles S. of I. R. No. 1 (Captain Jim), 160 ac.	Hay land	Evidence Pp. 103, 104, 271; Report of Agent on R. C. File No. 512D and Exhibit K6.	85	Vacant and available.	Allowed: Four hundred and eighty (480) acres, more or less, subject to survey, approximately eight (8) miles S. W. of Stone Reserve No. 1, as per sketch plan of Ashdown H. Green, B.C.L.S., numbered in accordance herewith and filed in duplicate with the Governments of Canada and of British Columbia.	Apparently Clear ENTERED ON MAP 14B no previous application AND SURVEY	
41. Do	Three square miles of pasturage S. W. of I. R. No. 1—Subsequently amended to 3 miles square and described as "3 miles square on the W. side of I. R. No. 1 by prolongation of the N. and S. boundary lines of the Reserve westerly to take in that amount."	Range	Evidence P. 104; Exhibit K6.	85	Not entertained, as not reasonably required.			
42. Do	Two miles square of timberland to the S. E. of and to be joined to I. R. No. 1 to be embraced by producing the E. boundary line of the Reserve in a southerly direction, also the W. boundary line similarly, to take in the desired area.	Firewood and building and fencing material supply.	Evidence Pp. 104, 271, 272; Report of Agent on R. C. File No. 512D, and Exhibit K6.	85	Vacant and available.	Allowed: Four hundred (400) acres, more or less, subject to survey by extension of the E. and W. boundaries of Stone Reserve No. 1, a distance of approximately twenty (20) chains or to the boundary of Township 60, as per sketch plan of Ashdown H. Green, B.C.L.S., numbered in accordance herewith and filed in duplicate with the Governments of Canada and of British Columbia.	Apparently Clear ENTERED ON MAP 29B no previous application W.P.R.	
43. Redstone or Alexis Creek	Fishing station on a small creek running out of Pensink or Pensing Lake into a small lake (unnamed) and thence easterly into Chilcotin River.	Fishing station	Evidence Pp. 107, 295, 296	12	Vacant and available.	Allowed: Forty-five (45) acres, more or less, subject to survey, on Pensing Lake and bounded on the W. by Lot No. 107 and on the N. by Lot No. 260, as per sketch plan of Ashdown H. Green, B.C.L.S., numbered in accordance herewith and filed in duplicate with the Governments of Canada and of British Columbia.	Apparently Clear ENTERED ON MAP 29B no previous application Puntz!	
44. Do	2½ miles square of meadow and pasturage approximately 10 miles N. W. of Redstone Flat I. R., roughly marked as "K 1".	Hay land and range	Evidence Pp. 107, 295, 296, 297; Exhibit K7 (See Note: Ev. P. 108).	12	Vacant and available.	Allowed: Lots Nos. 1240 and 1241, R. 2, Coast District, containing respectively two hundred and forty (240) and one hundred and sixty (160) acres, more or less, as per sketch plan of Ashdown H. Green, B.C.L.S., numbered in accordance herewith and filed in duplicate with the Governments of Canada and of British Columbia.	Apparently Clear ENTERED ON MAP 29B no previous application Covered by AP 37088 37090, Subdivided as lots 3740A, 3740B, 3740C, 3740D, 3740E, 3740F, 3740G, 3740H, 3740I, 3740J, 3740K, 3740L, 3740M, 3740N, 3740O, 3740P, 3740Q, 3740R, 3740S, 3740T, 3740U, 3740V, 3740W, 3740X, 3740Y, 3740Z, 3740AA, 3740AB, 3740AC, 3740AD, 3740AE, 3740AF, 3740AG, 3740AH, 3740AI, 3740AJ, 3740AK, 3740AL, 3740AM, 3740AN, 3740AO, 3740AP, 3740AQ, 3740AR, 3740AS, 3740AT, 3740AU, 3740AV, 3740AW, 3740AX, 3740AY, 3740AZ, 3740BA, 3740BB, 3740BC, 3740BD, 3740BE, 3740BF, 3740BG, 3740BH, 3740BI, 3740BJ, 3740BK, 3740BL, 3740BM, 3740BN, 3740BO, 3740BP, 3740BQ, 3740BR, 3740BS, 3740BT, 3740BU, 3740BV, 3740BW, 3740BX, 3740BY, 3740BZ, 3740CA, 3740CB, 3740CC, 3740CD, 3740CE, 3740CF, 3740CG, 3740CH, 3740CI, 3740CJ, 3740CK, 3740CL, 3740CM, 3740CN, 3740CO, 3740CP, 3740CQ, 3740CR, 3740CS, 3740CT, 3740CU, 3740CV, 3740CW, 3740CX, 3740CY, 3740CZ, 3740DA, 3740DB, 3740DC, 3740DD, 3740DE, 3740DF, 3740DG, 3740DH, 3740DI, 3740DJ, 3740DK, 3740DL, 3740DM, 3740DN, 3740DO, 3740DP, 3740DQ, 3740DR, 3740DS, 3740DT, 3740DU, 3740DV, 3740DW, 3740DX, 3740DY, 3740DZ, 3740EA, 3740EB, 3740EC, 3740ED, 3740EE, 3740EF, 3740EG, 3740EH, 3740EI, 3740EJ, 3740EK, 3740EL, 3740EM, 3740EN, 3740EO, 3740EP, 3740EQ, 3740ER, 3740ES, 3740ET, 3740EU, 3740EV, 3740EW, 3740EX, 3740EY, 3740EZ, 3740FA, 3740FB, 3740FC, 3740FD, 3740FE, 3740FF, 3740FG, 3740FH, 3740FI, 3740FJ, 3740FK, 3740FL, 3740FM, 3740FN, 3740FO, 3740FP, 3740FQ, 3740FR, 3740FS, 3740FT, 3740FU, 3740FV, 3740FW, 3740FX, 3740FY, 3740FZ, 3740GA, 3740GB, 3740GC, 3740GD, 3740GE, 3740GF, 3740GG, 3740GH, 3740GI, 3740GJ, 3740GK, 3740GL, 3740GM, 3740GN, 3740GO, 3740GP, 3740GQ, 3740GR, 3740GS, 3740GT, 3740GU, 3740GV, 3740GW, 3740GX, 3740GY, 3740GZ, 3740HA, 3740HB, 3740HC, 3740HD, 3740HE, 3740HF, 3740HG, 3740HH, 3740HI, 3740HJ, 3740HK, 3740HL, 3740HM, 3740HN, 3740HO, 3740HP, 3740HQ, 3740HR, 3740HS, 3740HT, 3740HU, 3740HV, 3740HW, 3740HX, 3740HY, 3740HZ, 3740IA, 3740IB, 3740IC, 3740ID, 3740IE, 3740IF, 3740IG, 3740IH, 3740II, 3740IJ, 3740IK, 3740IL, 3740IM, 3740IN, 3740IO, 3740IP, 3740IQ, 3740IR, 3740IS, 3740IT, 3740IU, 3740IV, 3740IW, 3740IX, 3740IY, 3740IZ, 3740JA, 3740JB, 3740JC, 3740JD, 3740JE, 3740JF, 3740JG, 3740JH, 3740JI, 3740JJ, 3740JK, 3740JL, 3740JM, 3740JN, 3740JO, 3740JP, 3740JQ, 3740JR, 3740JS, 3740JT, 3740JU, 3740JV, 3740JW, 3740JX, 3740JY, 3740JZ, 3740KA, 3740KB, 3740KC, 3740KD, 3740KE, 3740KF, 3740KG, 3740KH, 3740KI, 3740KJ, 3740KK, 3740KL, 3740KM, 3740KN, 3740KO, 3740KP, 3740KQ, 3740KR, 3740KS, 3740KT, 3740KU, 3740KV, 3740KW, 3740KX, 3740KY, 3740KZ, 3740LA, 3740LB, 3740LC, 3740LD, 3740LE, 3740LF, 3740LG, 3740LH, 3740LI, 3740LJ, 3740LK, 3740LL, 3740LM, 3740LN, 3740LO, 3740LP, 3740LQ, 3740LR, 3740LS, 3740LT, 3740LU, 3740LV, 3740LW, 3740LX, 3740LY, 3740LZ, 3740MA, 3740MB, 3740MC, 3740MD, 3740ME, 3740MF, 3740MG, 3740MH, 3740MI, 3740MJ, 3740MK, 3740ML, 3740MM, 3740MN, 3740MO, 3740MP, 3740MQ, 3740MR, 3740MS, 3740MT, 3740MU, 3740MV, 3740MW, 3740MX, 3740MY, 3740MZ, 3740NA, 3740NB, 3740NC, 3740ND, 3740NE, 3740NF, 3740NG, 3740NH, 3740NI, 3740NJ, 3740NK, 3740NL, 3740NM, 3740NN, 3740NO, 3740NP, 3740NQ, 3740NR, 3740NS, 3740NT, 3740NU, 3740NV, 3740NW, 3740NX, 3740NY, 3740NZ, 3740OA, 3740OB, 3740OC, 3740OD, 3740OE, 3740OF, 3740OG, 3740OH, 3740OI, 3740OJ, 3740OK, 3740OL, 3740OM, 3740ON, 3740OO, 3740OP, 3740OQ, 3740OR, 3740OS, 3740OT, 3740OU, 3740OV, 3740OW, 3740OX, 3740OY, 3740OZ, 3740PA, 3740PB, 3740PC, 3740PD, 3740PE, 3740PF, 3740PG, 3740PH, 3740PI, 3740PJ, 3740PK, 3740PL, 3740PM, 3740PN, 3740PO, 3740PP, 3740PQ, 3740PR, 3740PS, 3740PT, 3740PU, 3740PV, 3740PW, 3740PX, 3740PY, 3740PZ, 3740QA, 3740QB, 3740QC, 3740QD, 3740QE, 3740QF, 3740QG, 3740QH, 3740QI, 3740QJ, 3740QK, 3740QL, 3740QM, 3740QN, 3740QO, 3740QP, 3740QQ, 3740QR, 3740QS, 3740QT, 3740QU, 3740QV, 3740QW, 3740QX, 3740QY, 3740QZ, 3740RA, 3740RB, 3740RC, 3740RD, 3740RE, 3740RF, 3740RG, 3740RH, 3740RI, 3740RJ, 3740RK, 3740RL, 3740RM, 3740RN, 3740RO, 3740RP, 3740RQ, 3740RR, 3740RS, 3740RT, 3740RU, 3740RV, 3740RW, 3740RX, 3740RY, 3740RZ, 3740SA, 3740SB, 3740SC, 3740SD, 3740SE, 3740SF, 3740SG, 3740SH, 3740SI, 3740SJ, 3740SK, 3740SL, 3740SM, 3740SN, 3740SO, 3740SP, 3740SQ, 3740SR, 3740SS, 3740ST, 3740SU, 3740SV, 3740SW, 3740SX, 3740SY, 3740SZ, 3740TA, 3740TB, 3740TC, 3740TD, 3740TE, 3740TF, 3740TG, 3740TH, 3740TI, 3740TJ, 3740TK, 3740TL, 3740TM, 3740TN, 3740TO, 3740TP, 3740TQ, 3740TR, 3740TS, 3740TT, 3740TU, 3740TV, 3740TW, 3740TX, 3740TY, 3740TZ, 3740UA, 3740UB, 3740UC, 3740UD, 3740UE, 3740UF, 3740UG, 3740UH, 3740UI, 3740UJ, 3740UK, 3740UL, 3740UM, 3740UN, 3740UO, 3740UP, 3740UQ, 3740UR, 3740US, 3740UT, 3740UU, 3740UV, 3740UW, 3740UX, 3740UY, 3740UZ, 3740VA, 3740VB, 3740VC, 3740VD, 3740VE, 3740VF, 3740VG, 3740VH, 3740VI, 3740VJ, 3740VK, 3740VL, 3740VM, 3740VN, 3740VO, 3740VP, 3740VQ, 3740VR, 3740VS, 3740VT, 3740VU, 3740VV, 3740VW, 3740VX, 3740VY, 3740VZ, 3740WA, 3740WB, 3740WC, 3740WD, 3740WE, 3740WF, 3740WG, 3740WH, 3740WI, 3740WJ, 3740WK, 3740WL, 3740WM, 3740WN, 3740WO, 3740WP, 3740WQ, 3740WR, 3740WS, 3740WT, 3740WU, 3740WV, 3740WW, 3740WX, 3740WY, 3740WZ, 3740XA, 3740XB, 3740XC, 3740XD, 3740XE, 3740XF, 3740XG, 3740XH, 3740XI, 3740XJ, 3740XK, 3740XL, 3740XM, 3740XN, 3740XO, 3740XP, 3740XQ, 3740XR, 3740XS, 3740XT, 3740XU, 3740XV, 3740XW, 3740XX, 3740XY, 3740XZ, 3740YA, 3740YB, 3740YC, 3740YD, 3740YE, 3740YF, 3740YG, 3740YH, 3740YI, 3740YJ, 3740YK, 3740YL, 3740YM, 3740YN, 3740YO, 3740YP, 3740YQ, 3740YR, 3740YS, 3740YT, 3740YU, 3740YV, 3740YW, 3740YX, 3740YY, 3740YZ, 3740ZA, 3740ZB, 3740ZC, 3740ZD, 3740ZE, 3740ZF, 3740ZG, 3740ZH, 3740ZI, 3740ZJ, 3740ZK, 3740ZL, 3740ZM, 3740ZN, 3740ZO, 3740ZP, 3740ZQ, 3740ZR, 3740ZS, 3740ZT, 3740ZU, 3740ZV, 3740ZW, 3740ZX, 3740ZY, 3740ZZ	
45. Do	Meadowland of undefined acreage, approximately 20 miles N. W. of Redstone Flat I. R. and including one meadow between Chilcotin River on the N. and Mount Palmer on the S., roughly marked "K 7½". (Note: Precise gives Palmer's Ranch, not Mount Palmer).	Do	Do	12	Vacant and available.	Allowed: Eleven hundred and twenty (1120) acres, more or less, subject to survey, as per sketch plan of Ashdown H. Green, B.C.L.S., numbered in accordance herewith, and filed in duplicate with the Governments of Canada and of British Columbia.	Apparently Clear ENTERED ON MAP 29B no previous application For AP 37081 Surveys as L.P.S. 37081, 37082, 37083, 37084, 37085, 37086, 37087, 37088, 37089, 37090, 37091, 37092, 37093, 37094, 37095, 37096, 37097, 37098, 37099, 37100, 37101, 37102, 37103, 37104, 37105, 37106, 37107, 37108, 37109, 37110, 37111, 37112, 37113, 37114, 37115, 37116, 37117, 37118, 37119, 37120, 37121, 37122, 37123, 37124, 37125, 37126, 37127, 37128, 37129, 37130, 37131, 37132, 37133, 37134, 37135, 37136, 37137, 37138, 37139, 37140, 37141, 37142, 37143, 37144, 37145, 37146, 37147, 37148, 37149, 37150, 37151, 37152, 37153, 37154, 37155, 37156, 37157, 37158, 37159, 37160, 37161, 37162, 37163, 37164, 37165, 37166, 37167, 37168, 37169, 37170, 37171, 37172, 37173, 37174, 37175, 37176, 37177, 37178, 37179, 37180, 37181, 37182, 37183, 37184, 37185, 37186, 37187, 37188, 37189, 37190, 37191, 37192, 37193, 37194, 37195, 37196, 37197, 37198, 37199, 37200, 37201, 37202, 37203, 37204, 37205, 37206, 37207, 37208, 37209, 37210, 37211, 37212, 37213, 37214, 37215, 37216, 37217, 37218, 37219, 37220, 37221, 37222, 37223, 37224, 37225, 37226, 37227, 37228, 37229, 37230, 37231, 37232, 37233, 37234, 37235, 37236, 37237, 37238, 37239, 37240, 37241, 37242, 37243, 37244, 37245, 37246, 37247, 37248, 37249, 37250, 37251, 37252, 37253, 37254, 37255, 37256, 37257, 37258, 37259, 37260, 37261, 37262, 37263, 37264, 37265, 37266, 37267, 37268, 37269, 37270, 37271, 37272, 37273, 37274, 37275, 37276, 37277, 37278, 37279, 37280, 37281, 37282, 37283, 37284, 37285, 37286, 37287, 37288, 37289, 37290, 37291, 37292, 37293, 37294, 37295, 37296, 37297, 37298, 37299, 37300, 37301, 37302, 37303, 37304, 37305, 37306, 37307, 37308, 37309, 37310, 37311, 37312, 37313, 37314, 37315, 37316, 37317, 37318, 37319, 37320, 37321, 37322, 37323, 37324, 37325, 37326, 37327, 37328, 37329, 37330, 37331, 37332, 37333, 37334, 37335, 37336, 37337, 37338, 37339, 37340, 37341, 37342, 37343, 37344, 37345, 37346, 37347, 37348, 37349, 37350, 37351, 37352, 37353, 37354, 37355, 37356, 37357, 37358, 37359, 37360, 37361, 37362, 37363, 37364, 37365, 37366, 37367, 37368, 37369, 37370, 37371, 37372, 37373, 37374, 37375, 37376, 37377, 37378, 37379, 37380, 37381, 37382, 37383, 37384, 37385, 37386, 37387, 37388, 37389, 37390, 37391, 37392, 37393, 37394, 37395, 37396, 37397, 37398, 37399, 37400, 37401, 37402, 37403, 37404, 37405, 37406, 37407, 37408, 37409, 37410, 37411, 37412, 37413, 37414, 37415, 37416, 37417, 37418, 37419, 37420, 37421, 37422, 37423, 37424, 37425, 37426, 37427, 37428, 37429, 37430, 37431, 37432, 37433, 37434, 37435, 37436, 37437, 37438, 37439, 37440, 37441, 37442, 37443, 37444, 37445, 37446, 37447, 37448, 37449, 37450, 37451, 37452, 37453, 37454, 37455, 37456, 37457, 37458, 37459, 37460, 37461, 37462, 37463, 37464, 37465, 37466, 37467, 37468, 37469, 37470, 37471, 37472, 37473, 37474, 37475, 37476, 37477, 37478, 37479, 37480, 37481, 37482, 37483, 37484, 37485, 37486, 37487, 37488, 37489, 37490, 37491, 37492, 37493, 37494, 37495, 37496, 37497, 37498, 37499, 37500, 37501, 37502, 37503, 37504, 37505, 37506, 37507, 37508, 37509, 37510, 37511, 37512, 37513, 37514, 37515, 37516, 37517, 37518, 37519, 37520, 37521, 37522, 37523, 37524, 37525, 37526, 37527, 37528, 37529, 37530, 37531, 37532, 37533, 37534, 37535, 37536, 37537, 37538, 37539, 37540, 37541, 37542, 37543, 37544, 37545, 37546, 37547, 37548, 37549, 37550, 37551, 37552, 37553, 37554, 37555, 37556, 37557, 37558, 37559, 37560, 37561, 37562, 37563, 37564, 37565, 37566, 37567, 37568, 37569, 37570, 37571, 37572, 37573, 37574, 37575, 37576, 37577, 37578, 37579, 37580, 37581, 37582, 37583, 37584, 37585, 37586, 37587, 37588, 37589, 37590, 37591, 37592, 37593, 37594, 37595, 37596, 37597, 37598, 37599, 37600, 37601, 37602, 37603, 37604, 37605, 37606, 37607, 37608, 37609, 37610, 37611, 37612, 37613, 37614, 37615, 37616, 37617, 37618, 37619, 37620, 37621, 37622, 37623, 37624, 37625, 37626, 37627, 37628, 37629, 37630, 37631, 37632, 37633, 37634, 37635, 37636, 37637, 37638, 37639, 37640, 37641, 37642, 37643, 37644, 37645, 37646, 37647, 37648, 37649, 37650, 37651, 37652, 37653, 37654, 37655, 37656, 37657, 37658, 37659, 37660, 37661, 37662, 37663, 37664, 37665, 37666, 37667, 37668, 37669, 37670, 37671, 37672, 37673, 37674, 37675, 37676, 37677, 37678, 37679, 37680, 37681, 37682, 37683, 37684, 37685, 37686, 37687, 37688, 37689, 37690, 37691, 37692, 37693, 37694, 37695, 37696, 37697, 37698, 37699, 37700, 37701, 37702, 37703, 37704, 37705, 37706, 37707, 37708, 37709, 37710, 37711, 37712, 37713, 37714, 37715, 37716, 37717, 37718, 37719, 37720, 37721, 37722, 37723, 37724, 37725, 37726, 37727, 37728, 37729, 37730, 37731, 37732, 37733, 37734, 37735, 37736, 37737, 37738, 37739, 37740, 37741, 37742, 37743, 37744, 37745, 37746, 37747, 37748, 37749, 37750, 37751, 37752, 37753, 37754, 37755, 37756, 37757, 37758, 37759, 37760, 37761, 37762, 37763, 37764, 37765, 37766, 37767, 37768, 37769, 37770, 37771, 37772, 37773, 37774, 37775, 37776, 37777, 37778, 37779, 37780, 37781, 37782, 37783, 37784, 37785, 37786, 37787, 37788, 37789, 37790, 37791, 37792, 37793, 37794, 37795, 37796, 37797, 37798, 37799, 37800, 37801, 37802, 37803, 37804, 37805, 37806, 37807, 37808, 37809, 37810, 37811, 37812, 37813, 37814, 37815, 37816, 37817, 37818, 37819, 37820, 37821, 37822, 37823, 37824, 37825, 37826, 37827, 37828, 37829, 37830, 37831, 37832, 37833, 37834, 37835, 37836, 37837, 37838, 37839, 37840, 37841, 37842, 37843, 37844, 37845, 37846, 37847, 37848, 37849, 37850, 37851, 37852, 37853, 37854, 37855, 37856, 37857, 37858, 37859, 37860, 37861, 37862, 37863, 37864, 37865, 37866, 37867, 37868, 37869, 37870, 37871, 37872, 37873, 37874, 37875, 37876, 37877, 37878, 37879, 37880, 37881, 37882, 37883, 37884, 37885, 37886, 37887, 37888, 37889, 37890, 37891, 37892, 37893, 37894, 37895, 37896, 37897, 37898, 37899	

129822

26.	Anaham	General enlargement of Reserve by inclusion of timberland N. of I. R. No. 1, 4 miles square.	Timberland	Evidence Pp. 76, 77, 89, 260; Report of Agent on R. C. File No. 512D.	36	Vacant and available.	Not entertained, as not reasonably required in view of other allowances.	✓
27.	Do	Seymour's Meadow, approximately 24 miles N. W. of Anaham I. R., on Anaham Creek, at its head, about 60 ac.	Hay land	Evidence Pp. 90, 261; Report of Agent on R. C. File No. 512D and Exhibit K3.	36	University Reserve Land.	Not entertained.	✓
28.	Do	Billy's and Tommy's meadow, approximately 3 to 5 miles N. W. of location covered by Application No. 27, approximately 50 ac.	Hay land	Evidence Pp. 91, 92, 262; Report of Agent on R. C. File No. 512D and Exhibit K4.	36	Lot No. 481, in Government Reserve.	Allowed: In lieu of lands applied for under Items Nos. 28, 29, 30, 32 and 33, Lot No. 481, containing an area of four hundred (400) acres, more or less, adjoining Anaham's Meadow Reserve No. 2 on the S. <i>Just Reserve</i>	✓
29.	Do	Dick's Meadow approximately 13 (Indians say 3) miles S. W. of location covered by Application No. 27, on tributary of Anaham Creek, 25 ac., more or less.	Hay land	Evidence Pp. 92, 262; Report of Agent on R. C. File No. 512D and Exhibit K4.	36		See allowance under Item No. 28 hereof.	✓
30.	Do	Four square miles of pasturage to be joined to Meadow I. R. No. 2 on the east. (Indians' petition describes as 4 miles square).	Range	Evidence Pp. 92, 261; Report of Agent on R. C. File No. 512D and Exhibit K4.	36		See allowance under Item No. 28 hereof.	✓
31.	Do	Four square miles of timberland between I. R. No. 1 and I. R. No. 2.	Timber (logging) and firewood	Evidence Pp. 92, 93, 260; Report of Agent on R. C. File No. 512D and Exhibit K4.	36		Duplication of Item No. 26 hereof. Not entertained.	✓
32.	Do	Long Johnnie's meadow, approximately 22 miles (Agent says 25 miles) N. of I. R. No. 1, approximately 25 acres.	Hay land	Evidence Pp. 93, 94, 264, 265; Report of Agent on R. C. File No. 512D and Exhibit K5.	36	Vacant and available.	See allowance under Item No. 28 hereof.	✓
33.	Do	Chief Bob's meadow, at head of Anaham Creek, approximately 18 miles N. E. of I. R. No. 1, with a large lake to the N. and a small lake on the S.	Hay land	Evidence Pp. 90, 91, 262, 263; Report of Agent on R. C. File No. 512D and Exhibit K3.	36	Vacant and available.	See allowance under Item No. 28 hereof.	✓
34.	Do	Meadow approximately 3 miles N. of location covered by Application No. 33.	Hay land	Evidence Pp. 91, 263; Report of Agent on R. C. File No. 512D and Exhibit K4.	36	Vacant and available.	Not entertained, land applied for being reported "not worth taking up."	✓
35.	Do	Meadow 3 or 4 miles S. W. of location covered by Application No. 33, on Anaham Creek. (Agent describes location as one mile N. of location covered by Application No. 34 and 24 miles due N. of Anaham I. R. No. 1).	Hay land	Evidence Pp. 92, 263, 264; Report of Agent on R. C. File No. 512D.	36	Vacant and available.	Duplication of Item No. 33 hereof.	✓
36.	Do	Meadow approximately 5 miles W. of location covered by Application No. 35.	Hay land	Evidence P. 264; Report of Agent on R. C. File No. 512D.	36		Not entertained, as not reasonably required.	✓
37.	Do	Old Stump's Meadow, approximately 28 miles from I. R. No. 1 and N. E. thereof.	Hay land	Evidence P. 266; Report of Agent on R. C. File No. 512D.	36		Not entertained, as not reasonably required.	✓
38.	Do	Application for a few acres around a spring on the N. E. side of I. R. No. 2, about 300 yards from the Reserve line.	Watering stock	Evidence P. 267; Report of Agent on R. C. File No. 512D.	36		Not entertained, as not reasonably required.	✓

Williams Lake—3

Over 1.00. Carbo Not
Apparently Clear
298 W.O.R.
Narrow application

129822

14.	Do	Application in behalf of one Charlie Spahan, (also referred to as Jimmy Spahan) for land on Loon Lake, 16 miles E. of I. R. No. 1 and 5 miles N. E. of United States Meadow.	Hay land and pasturage	Evidence Pp. 55, 56, 57; Report of Agent on R. C. File No. 512D and 512E.	42.6	Vacant and available.	Not entertained, land applied for being in intermittent small meadows.	70.43
15.	Do	Application in behalf of Old Dick for naturally irrigated meadowland near location covered by Application No. 9 described as 3 miles E. of United States Meadow and 1/4 mile S. of Tommy Johnson's meadow.	Hay land and pasturage	Evidence Pp. 54, 55, 277; Reports of Agent on R. C. File Nos. 512D and 512E.	42.6	Vacant and available.	Allowed: Section 21 (in its entirety), also N. E. 1/4 Sec. 20 and S. 1/4 Sec. 29, all in Tp. 28, Lillooet District, containing an aggregate area of eleven hundred and twenty (1120) acres, more or less, this allowance covering also Applications Nos. 17, 18 and 21 hereto.	Apparently Clear ENTERED ON MAP 27. W.A.R. Covering portions of Sec. 21, N.E. 1/4 Sec. 20 & S. 1/4 Sec. 29, Tp. 28, Lillooet District, should be applied to, 1943 not a previous application.
16.	Do	Application in behalf of one Jimmy Spahan for any available land, 6 miles S. E. of I. R. No. 1.	Do	Evidence Pp. 55, 56, 277; Reports of Agent on R. C. File Nos. 512D and 512E.	42.6	Vacant and available.	Allowed: One hundred (100) acres, more or less, adjoining Sampson's Meadow Indian Reserve No. 11 on the E. as per sketch plan of Ashdown H. Green, B.C.L.S., numbered in accordance herewith and filed in duplicate with the Governments of Canada and of British Columbia.	Apparently Clear ENTERED ON MAP 27. W.A.R. Covering portions of the N.E. 1/4 Sec. 20 & S. 1/4 Sec. 29, Tp. 28, Lillooet District, (allotted to same) back to Survey Section No. previous application.
17.	Do	Application in behalf of one Tommy Johnson for meadowland 500 yards up stream from land covered by application No. 9—"one square mile, or 1/4 mile each way would do." Includes Lot or Sec. C. P. 2194, Lillooet L. D., also described as 15 miles E. of No. 1 Reserve and 3 1/2 miles E. of United States Meadow or 1/2 mile west of location covered by application No. 9.	Hay land	Evidence Pp. 46-48, 275; Report of Agent on R. C. File No. 512D.	42.6	Vacant and available.	Covered by allowance under Item No. 15 hereof.	
18.	Do	Application in behalf of David Dan for meadow alongside location covered by Application No. 17 and 1/4 mile N. thereof.	Hay land	Evidence Pp. 57, 58, 278, 279; Report of Agent on R. C. File No. 512D.	42.6	Vacant and available.	Covered by allowance under Item No. 15 hereof.	
19.	Do	Application in behalf of one Billy Chelchel for land adjoining the location covered by Application No. 17 on the E. side.	Hay land	Evidence Pp. 58, 59; Report of Agent on R. C. File No. 512D.	42.6	Lot No. 322, alienated.	Not entertained, land applied for not being available.	
20.	Do	Application in behalf of one Scott for meadowland about 4 miles S. of United States Meadow and 1/4 mile W. of the location covered by Application No. 17.	Hay land and pasturage	Evidence Pp. 59, 60, 279, 280; Report of Agent on R. C. File No. 512D.	42.6	University Reserve land.	Not entertained, land applied for not being available.	
21.	Do	Application in behalf of one Little Dick for meadow 5 miles S. W. of United States Meadow and one mile S. of location covered by Application No. 20.	Hay land	Evidence Pp. 60, 61, 283; Report of Agent on R. C. File No. 512D.	42.6	Vacant and available.	Not entertained.	
22.	Do	Application in behalf of one Louis Kalleste for meadow 1/4 mile S. of location covered by Application No. 13.	Hay land	Evidence Pp. 282, 283; Report of Agent on R. C. File No. 512D.	42.6	Vacant and available.	Covered by allowance under Item No. 15 hereof.	
23.	Do	Application in behalf of one Antoine Spahan for meadow 4 miles N. E. of United States Meadow. (Applicant says 20 miles from U. S. Meadow).	Hay land	Evidence Pp. 283, 284; Report of Agent on R. C. File No. 512D.	42.6	Vacant and available.	Allowed: As an addition to Cludolum Reserve No. 9, one hundred and eighty (180) acres, more or less, subject to survey, as per sketch plan of Ashdown H. Green, B.C.L.S., numbered in accordance herewith and filed in duplicate with the Governments of Canada and of British Columbia.	Apparently Clear ENTERED ON MAP 27. W.A.R. Covering portions of Sec. 14 (N.E. 1/4) & S. 1/4 of Sec. 27, Tp. 28, Lillooet District, (allotted to same) back to Survey Section No. previous application.
24.	Do	Application for enlargement of No. 1 Reserve and for additional timberland.	Timberland	Evidence Pp. 63, 280, 281	42.6		Not entertained as not reasonably required.	
25.	Toosey or Riskie	Application (a) for land surrounding spring between Lot No. 113 and Reserve; (b) Captain Frank's place; (c) Extensive timber, and (d) Grazing land: Description of location desired subsequently amended and timberland and pasturage applied for 3 miles W. of I. R. No. 1, on W. side of Becher Lake.	Timberland and pasturage	Evidence Pp. 68, 69, 70, 71, 271, 272, 273; Report of Agent on R. C. File No. 512D.	135	Pasturage applied for alienated; timberland in University Reserve; land covered by Sub-item (b) Crown Granted.	Allowed: (a) S. E. 1/4 of N. E. 1/4 Sec. 6, Tp. 20, Lillooet District, adjoining Toosey Reserve, No. 1, and containing forty (40) acres, more or less; (b) not entertained, land applied for not being available; (c) and (d) not entertained, land applied for not being available.	(a) Covered by L. 2 45285. W.A.R. ENTERED ON MAP 27. W.A.R. Not entertained.

Williams Lake—3

129822

1. Canim Lake	(a) 260 ac. worked by George Archie and allegedly taken up by Henry Buzale (white); (b) Indian desired to pre-empt location 4 miles from Halfway Ranch and midway between Canim Lake I. R. No. 1 and the main wagon road—8 miles west of Canim Lake I. R. No. 1.	General farming	Evidence Pp. 3-5, 175-9, 285-29 Special Report by Agent on C. File No. 512E. "Does think there is any trespass Archie's holding, but this can only be determined by survey."	75	(a) Alienated; (b) Vacant and available.	(a) Not entertained, land applied for not being available; (b) Allowed: Forty (40) acres, more or less, subject to survey, as per sketch plan of Ashdown H. Green, B.C.L.S., numbered in accordance herewith and filed in duplicate with the Governments of Canada and of British Columbia.	(a) old entertained (B) According to sketch no exact description given. Covered by the S.E. 1/4 of L. 4208 Lillooet Dist. NE 1/4 of L. 4208 Lillooet Dist. ENTERED ON MAP 27 th W.A.R. no previous application
2. Do	Application in behalf of Prosper Allen for land allegedly taken up by whites 12 miles from Canim Lake I. R. No. 1 and S. E. of the Canim Lake—Cariboo Road connection branch road, on right bank of Bridge Creek: 2 parcels of land about 3 miles apart and containing respectively 15 and 30 acres.	Farming and hay land	Evidence Pp. 6, 7, 289-291; also Agent's Reports on R. C. File Nos. 512D and 512E.	75	Alienated.	Not entertained, land applied for not being available.	
3. Do	Application in behalf of Isidore Frank for a meadow 3 miles S. E. of Canim Lake I. R. No. 1 "on the mountain."	Hay land	Evidence Pp. 7-9, 175-178; also Agent's report on R. C. File No. 512D and Exhibit K1.	75	Vacant and available.	Allowed: Eighty (80) acres, more or less, being the N. 1/4 of N. E. 1/4 Lot No. 3716, Lillooet District.	N.W. NE 1/4 of L. 3716. Lillooet Dist. covered by PR. 3053. Homeowner's application ENTERED ON MAP 30 th W.A.R. N.E. 1/4 of L. 4009 Lillooet Dist. covered by PR. 3029.
4. Do	Application in behalf of Billy Decker for land on both sides of Decker Creek: 20 miles S. of Canim Lake I. R. No. 1.	Do	Evidence Pp. 9, 10, 293, 294-5	75	Vacant and available.	Allowed: N. 1/4 of Fri. N. 1/4 of Lot No. 4039, Lillooet District, containing one hundred and thirty-three (133) acres, more or less, subject to survey.	ENTERED ON MAP 30 th W.A.R. no previous application
5. Do	Application in behalf of Jimmy Dixon for pre-emption of 160 ac. being: "N. W. 1/4 of Lot 2826." <i>See letter of 22nd May 1916</i>	General farming and pasturage	Evidence Pp. 291, 292; Agent's Report on R. C. File No. 512D, and Exhibits and K15.	75	Vacant and available.	Allowed: N. W. 1/4 of Lot No. 2826, and W. 1/4 of Lot 2826A, Lillooet L. Dist.	ENTERED ON MAP 27 th W.A.R. no previous application
6. Do	Application in behalf of one Christopher for land pre-empted by Captain Watson and subsequently occupied by Minty. Application filed with Agent after visit of Commission.	Hay land	Evidence Pp. 282-289; also Agent's Report on R. C. File 512D.	75	Alienated.	Not entertained, land applied for not being available.	
7. Canoe Creek	General and indefinite application for enlargement of No. 3 Reserve.	General farming	Evidence Pp. 11-12, 180-	944	Indefinite.	Not entertained.	
8. Do	Application by one Francis for property allegedly Crown granted to Copper Johnnie, his father.		Evidence Pp. 11-12, 245; also K13 and Agent's Reports on C. File No. 512E.	944	Crown Grant held in trust by James Murphy, Solicitor, Ashcroft.	Departmental: To be made subject of Special Report.	
9. Alkali Lake	Application in behalf of Jimmy Decker for 7 or 8 ac. traversed by Alkali Lake Creek, 5 miles E. of Sampson's Meadow I. R. No. 11; Application revised on description of location to "two miles square."	Hay land and pasturage	Evidence Pp. 45, 46, 190, 274; Agent's Reports on C. File Nos. 512D and 512E.	42.6	Vacant and available.	Allowed: S. 1/4 Sec. 15, Tp. 43, Lillooet District, and S. W. 1/4 Sec. 14, Tp. 43, Lillooet District, containing four hundred and eighty (480) acres, more or less, as per sketch plan of Ashdown H. Green, B.C.L.S., numbered in accordance herewith and filed in duplicate with the Governments of Canada and of British Columbia.	Apparently Clear
10. Do	Application in behalf of one Alex. Kaleste for a pre-emption on the right bank of the Fraser river approximately 10 miles S. W. of I. R. No. 1: 160 ac.	General farming	Evidence P. 274; R. Agent on R. C. Files and 512E.	42.6	Vacant and available.	Allowed: Forty (40) acres, more or less, subject to survey, N. of Lot No. 974, Lillooet District, as per sketch plan of Ashdown H. Green, B.C.L.S., numbered in accordance herewith and filed in duplicate with the Governments of Canada and of British Columbia.	Apparently Clear
11. Do	Application in behalf of one Bob Johnson for meadowland E. of Harry Felner's meadow at Coldwater Springs. Application made to Agent after the Commission's visitation.	Hay land	Reports of Agent on Nos. 512D and 512E.	42.6	Vacant and available.	Not entertained, as not reasonably required.	
12. Do	Application in behalf of one Napoleon Balleau (Bulleau) for land in Johnson's pasture to assign land Crown granted to applicant—addition to be to the "left" corner of the Crown granted land.	Meadowland	Evidence Pp. 48, 49; File No. 512E.	42.6	Alienated.	Not entertained, land applied for not being available.	
13. Do	Application in behalf of one August Martin for land under fence just below Long Johnnie's: 5 miles E. of I. R. No. 1, (a) 40 acres, also (b) 80 acres addition.	Meadowland, pasturage and timberland	Evidence Pp. 50, 277; Reports of Files Nos. 512D	42.6	(a) Title to forty (40) acres held by Mr. Johnson in trust for the Applicant (purchaser); (b) Alienated.	(a) Allowed: Forty (40) acres, more or less; (b) Not entertained, land applied for not being available.	no previous application

Williams Lake—1

ENTERED ON MAP 27th W.A.R. (b) not entertained.

129822

62.	Do	Freddie's Meadow, 7 miles from I. R. No. 3.	Do	Do—also evidence Pp. 253.	40.5	Vacant and available.	Allowed: Eighty (80) acres, more or less, subject to survey, on Necausley Creek, approximately six miles W. from village, as per sketch plan of Ashdown H. Green, B.C.L.S., numbered in accordance herewith and filed in duplicate with the Governments of Canada and of British Columbia.	Apparently Clear ENTERED ON MAP 27 No previous application. W.H.A.
63.	Do	Lorin family Meadow, 8 miles N. W. of I. R. No. 3 (intermittent meadows).	Do	Do—also evidence P. 254.	40.5	Vacant and available.	Allowed: (a) One hundred (100) acres, more or less, subject to survey, approximately one mile E. from Necausley Creek and eight miles N. W. of Reserve No. 3; and (b) Two ^{one} acre, more or less, subject to survey, approximately one-half mile W. of said parcel and on Necausley Creek, to include site of Indian house and outbuildings and to border on creek, as per sketch plan of Ashdown H. Green, B.C.L.S., numbered in accordance herewith and filed in duplicate with the Governments of Canada and of British Columbia.	720 (10) Apparently Clear ENTERED ON MAP 27 No previous application. W.H.A.
64.	Do	Dominick and Son's Meadow, 7½ miles N. W. of I. R. No. 3 and approximately 1¼ miles S. of Location covered by Application No. 63.	Do	Do—also evidence Pp. 254, 255.	40.5	Vacant and available.	Allowed: Eighty (80) acres, more or less, subject to survey, situate on both sides of Necausley Creek, approximately eight and one-half miles N. W. of Reserve No. 3, as per sketch plan of Ashdown H. Green, B.C.L.S., numbered in accordance herewith and filed in duplicate with the Governments of Canada and of British Columbia.	Apparently Clear ENTERED ON MAP 27 No previous application. W.H.A.
65.	Do	Chief Sam's meadow, 8 miles S. E. of I. R. No. 2.	Do	Do—also evidence Pp. 255, 256.	40.5	Vacant and available.	Allowed: One hundred and sixty (160) acres, more or less, subject to survey, approximately three miles E. of the Fraser River, as per sketch plan of Ashdown H. Green, B.C.L.S., numbered in accordance herewith and filed in duplicate with the Governments of Canada and of British Columbia.	Apparently Clear ENTERED ON MAP 27 No previous application. W.H.A.
66.	Do	Enlargement of I. R. No. 3 by the addition of timberland, commencing at the S. W. corner of the Reserve; thence W. one mile; thence N. one mile; thence E. one mile; thence S. one mile to the place of commencement—1 sq. mile.	Timberland	Evidence Pp. 150-158, 249, 250, 251; Report of Agent on R. C. File No. 512D and letter of Agent 22/5/14 on R. C. File 512E; Schedule of Lands applied for by Department of Indian Affairs, on R. C. File 601.	40.5	Vacant and available.	Allowed: That certain tract or parcel of land lying to the W. of and adjoining the southern portion of Reserve No. 3, containing an area of three hundred and sixty (360) acres, more or less, subject to survey, as per sketch plan of Ashdown H. Green, B.C.L.S., numbered in accordance herewith and filed in duplicate with the Governments of Canada and British Columbia.	12th May 1909 Apparently Clear ENTERED ON MAP 27 No previous application.
67.	Quesnel	Fishing station at Ten Mile Lake.	Fishing station and firewood supply base	Evidence Pp. 161, 162, 247, 248, 249; also Report of Agent on R. C. File No. 512D; Exhibit K12; and material on R. C. File No. 512E.	42.15	Not available.	Not entertained, land applied for not being available.	—
68.	Do	Application of Jessie Paul.		Schedule of Lands applied for by Department of Indian Affairs, on R. C. File 601, and correspondence on R. C. File No. 512E.	42.15		Not entertained; Departmental, being apparently a question of compensation for certain improvements rather than an application for land.	—
ADDENDA								
69.	Toosey or Riskie Creek	Applicant of Kathleen Solomon.		R. C. File No. 512E.	135		Covered by action on Item No. 25 hereof.	—
70.	Williams Lake	Application for additional land in lieu of money compensation for railway right-of-way.		Reference from Department of Indian Affairs.	30.8		Not entertained: Departmental.	—

†NOTE: When Mr. Surveyor Green subsequently visited Soda Creek to locate lands applied for under Applications Nos. 55, 56 and 57 hereof, Chief Antoine informed him that this Band had all the land required and did not want the lands for which applications had been filed and refused to accompany Mr. Green to locate same.

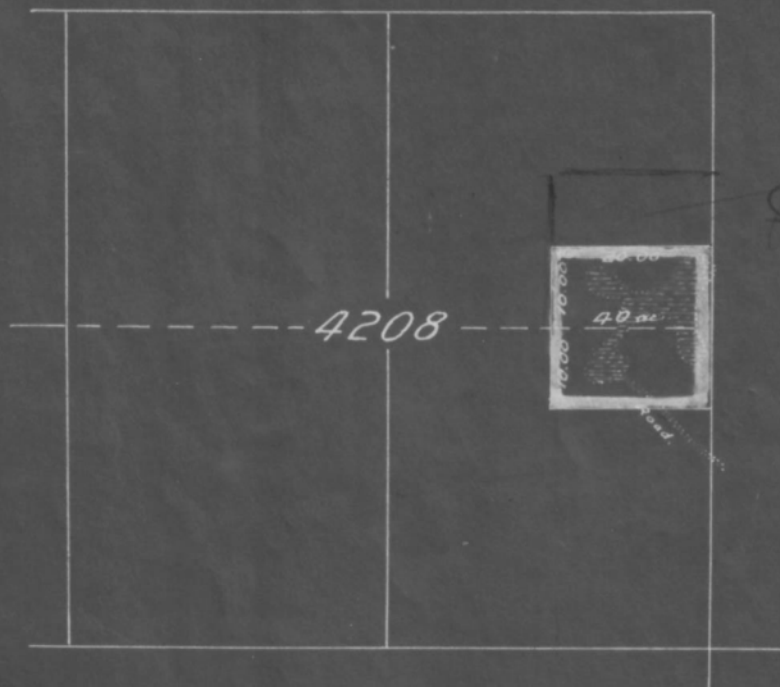
Williams Lake—6

N^o 1.

CANIM LAKE INDIANS.

LILLOOET DISTRICT.

— Scale 1 Inch = 20 Chains —



As shown to from
B.C.L.

120822

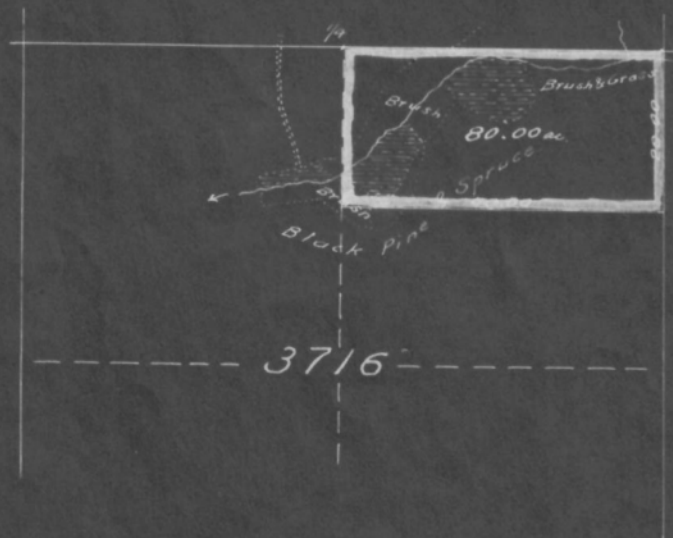


N^o 3.

CANIM LAKE INDIANS.

LILLOOET DISTRICT.

— Scale 1 Inch = 20 Chains —



Ashton & Green
B.C.L.

129822

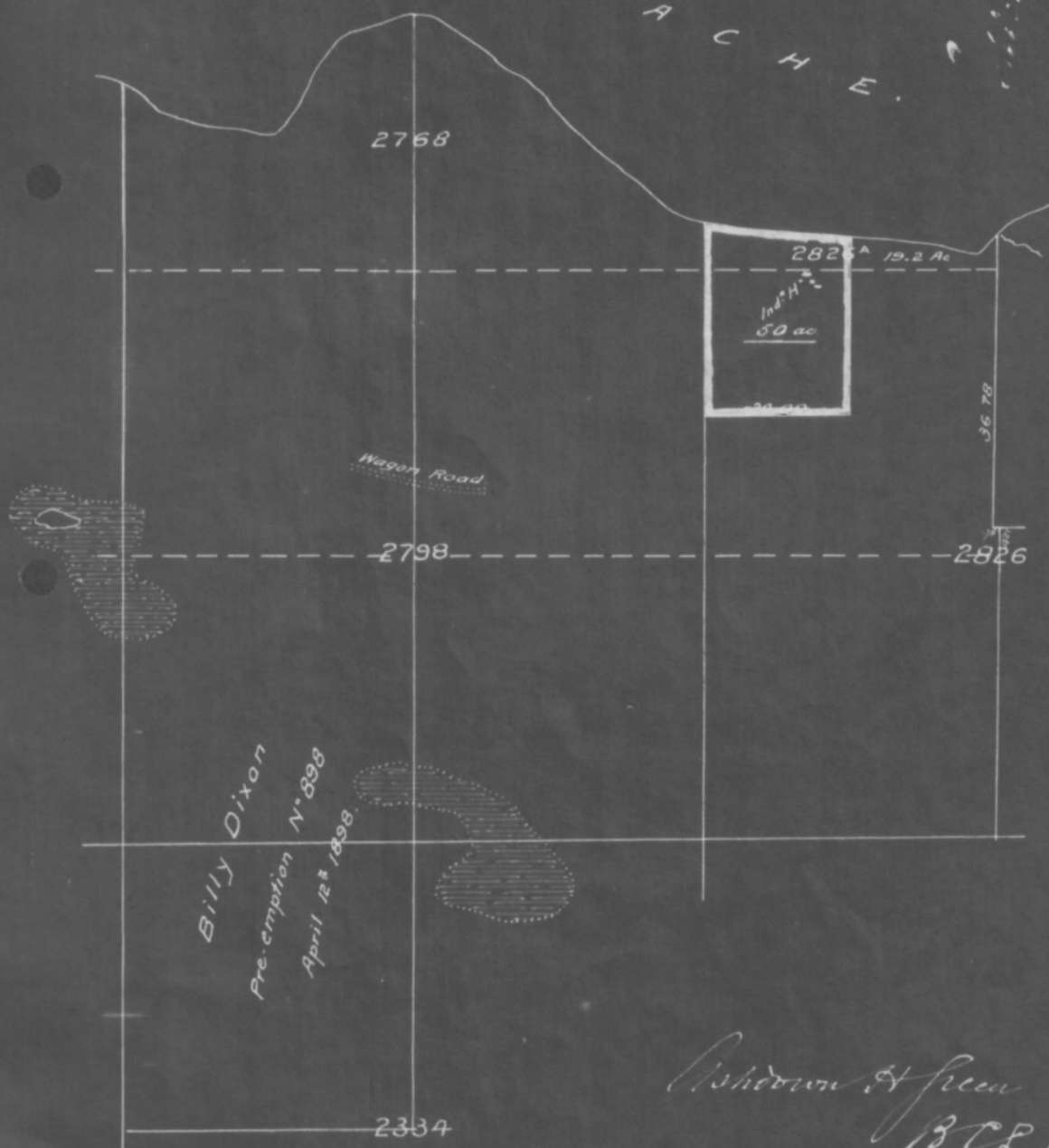
129822



CANIM LAKE INDIANS.
LILLOOET DISTRICT.

— Scale 1 Inch = 20 Chains —

L A C
L A
H A C H E.



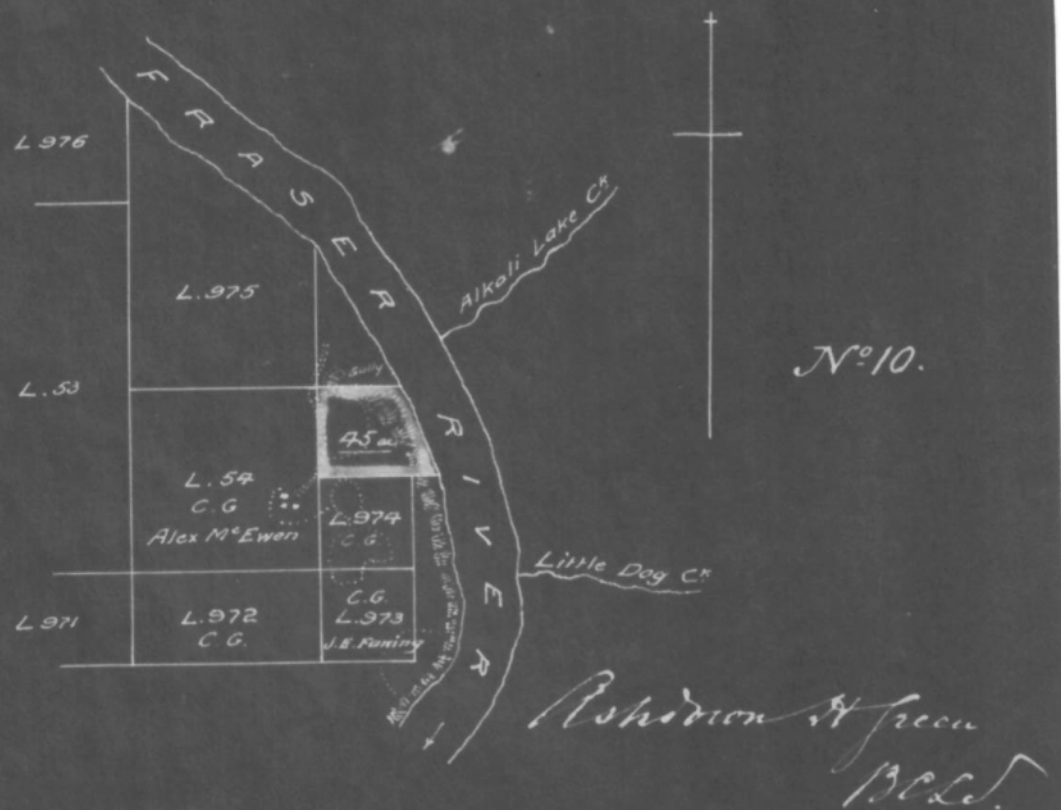
129822



ALKALI LAKE INDIANS.

LILLOOET DISTRICT.

— Scale 1 Inch = 40 Chains —



129822



N^{os} 14 & 23.

ALKALI LAKE INDIANS.

LILLOOET DISTRICT.

— Scale 1 Inch = 40 Chains —



129822

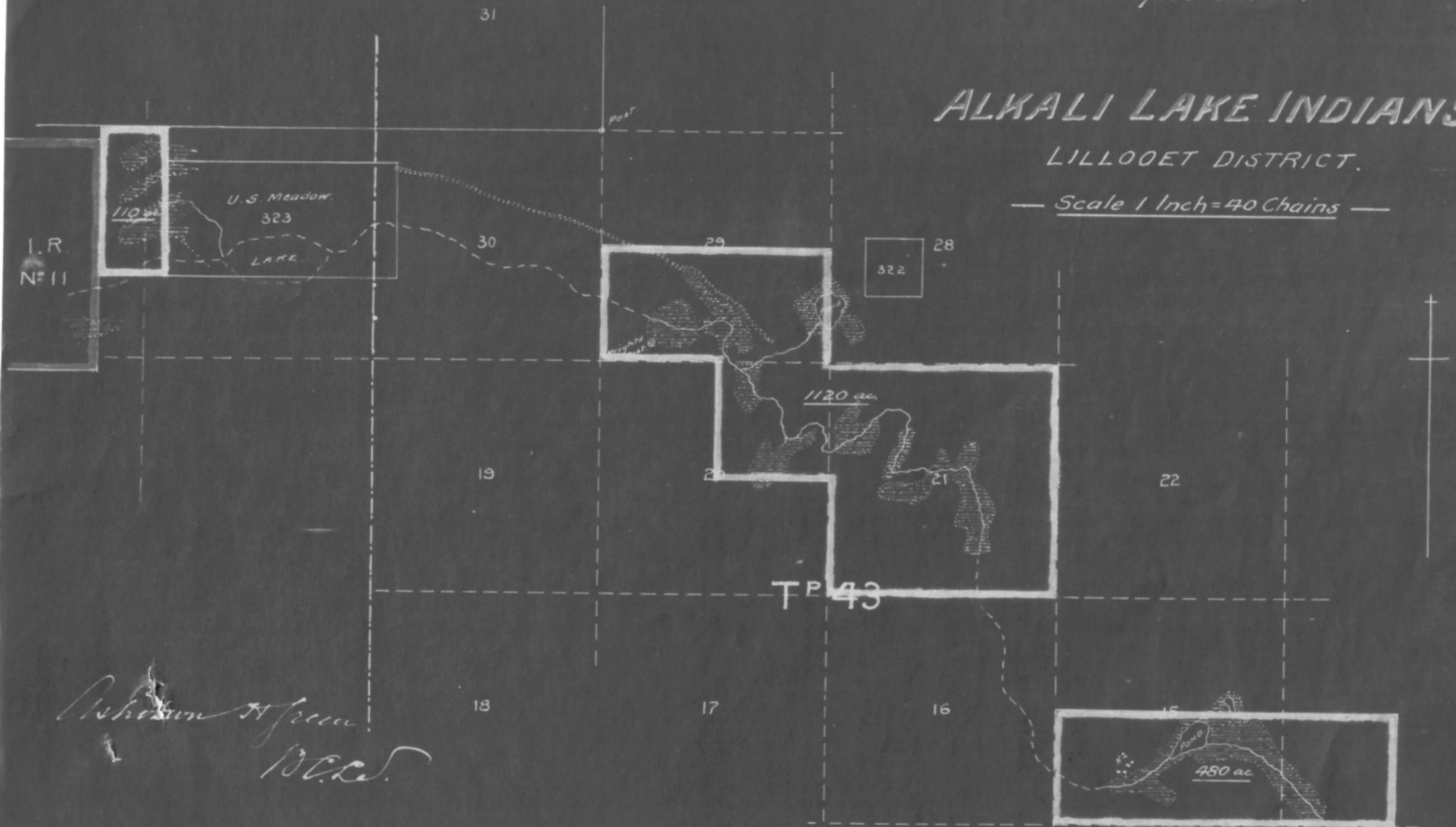


N^{os} 9. 15. 16. 17. 18. 19. 22.

ALKALI LAKE INDIANS.

LILLOOET DISTRICT.

— Scale 1 Inch = 40 Chains —



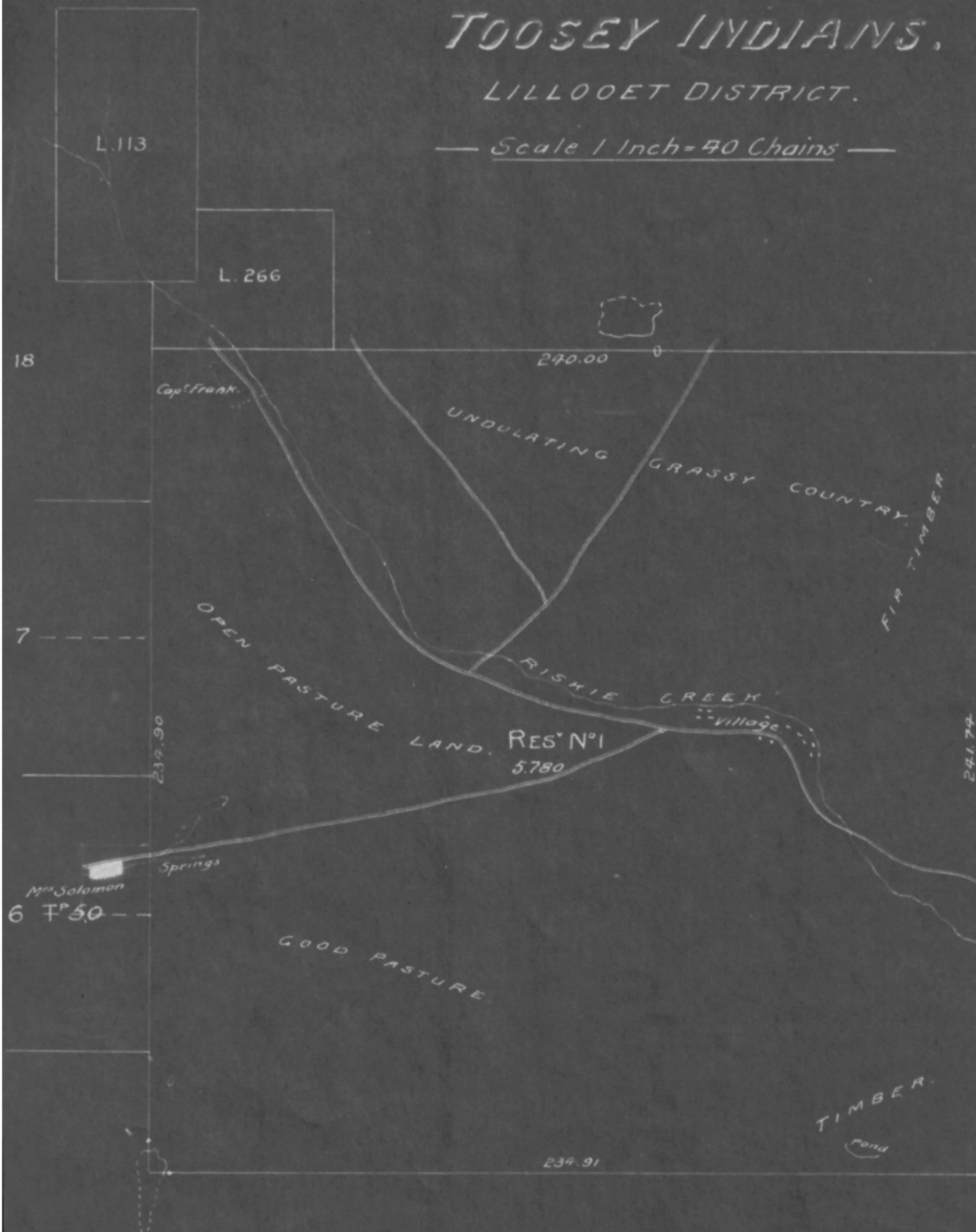


N^o 25.

TOOSEY INDIANS.

LILLOOET DISTRICT.

— Scale 1 Inch = 40 Chains —



Ashdown & Co
B.C.L.

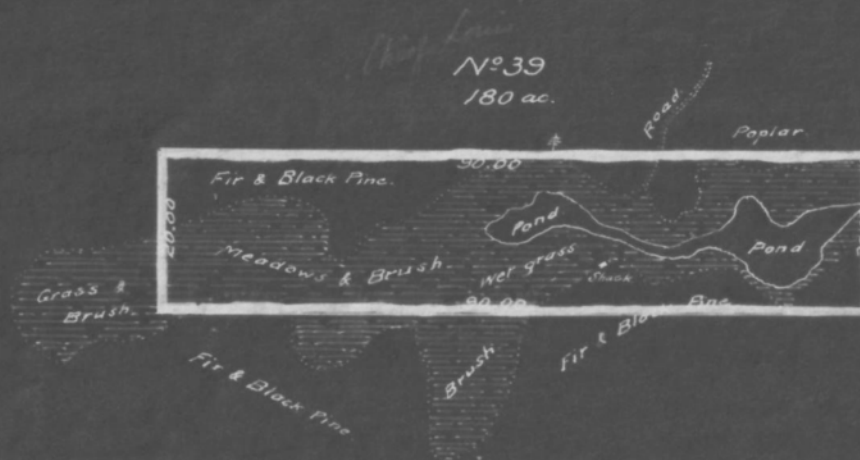
129822



STONE INDIANS.

LILLOOET DISTRICT.

— Scale 1 Inch = 20 Chains. —



William H. Green
BCR

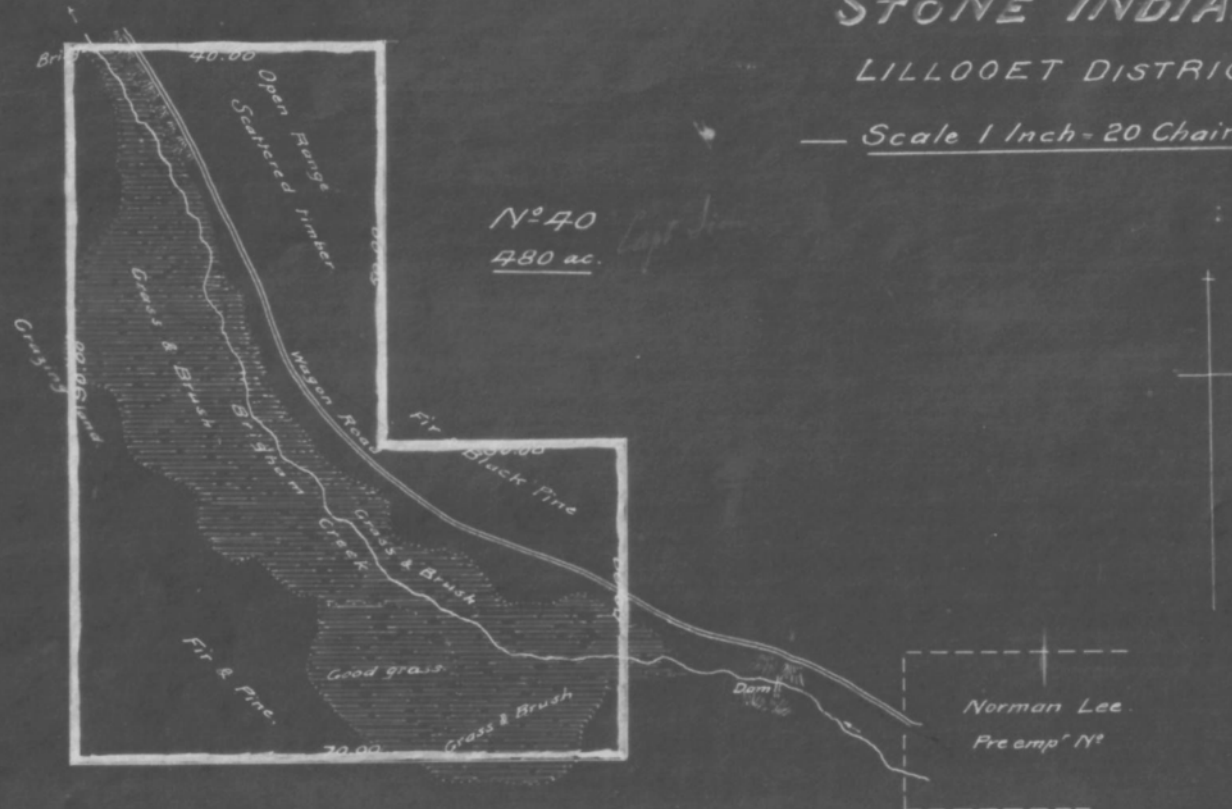


129822

STONE INDIANS.

LILLOOET DISTRICT.

— Scale 1 Inch = 20 Chains. —



Whitson & Co
B.C.C.

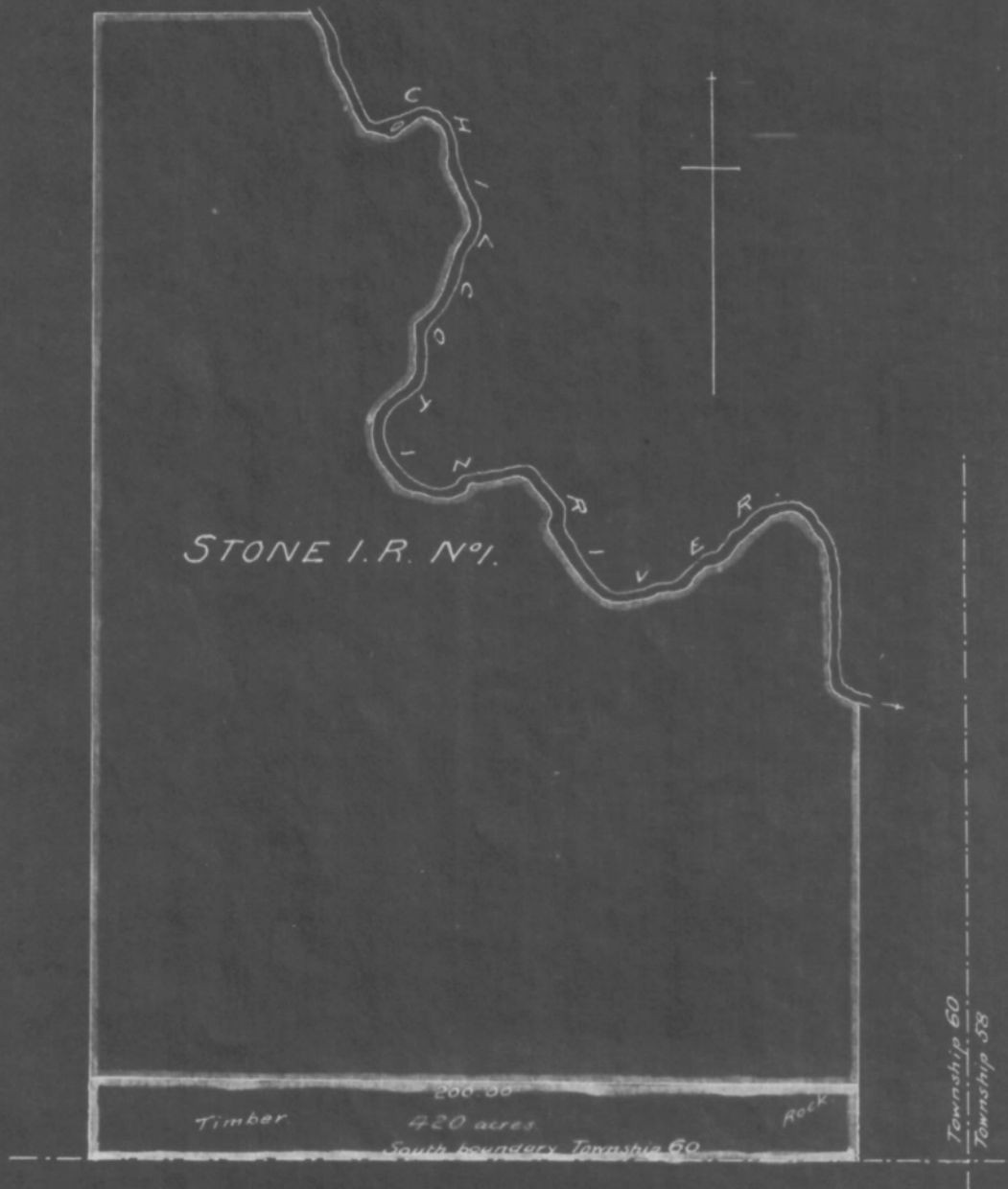


129822

STONE INDIANS.

LILLOOET DISTRICT.

— Scale 1 Inch = 40 Chains. —



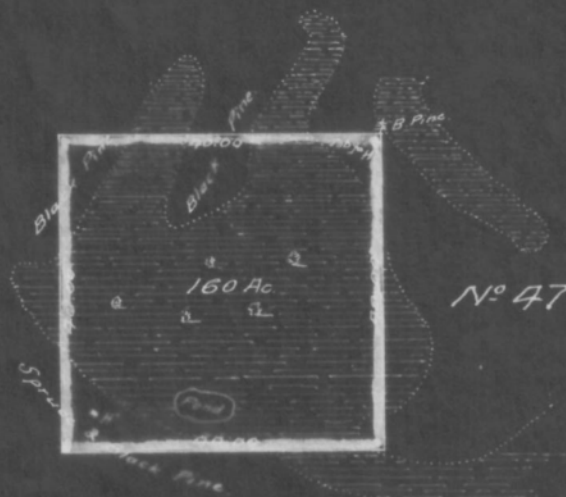
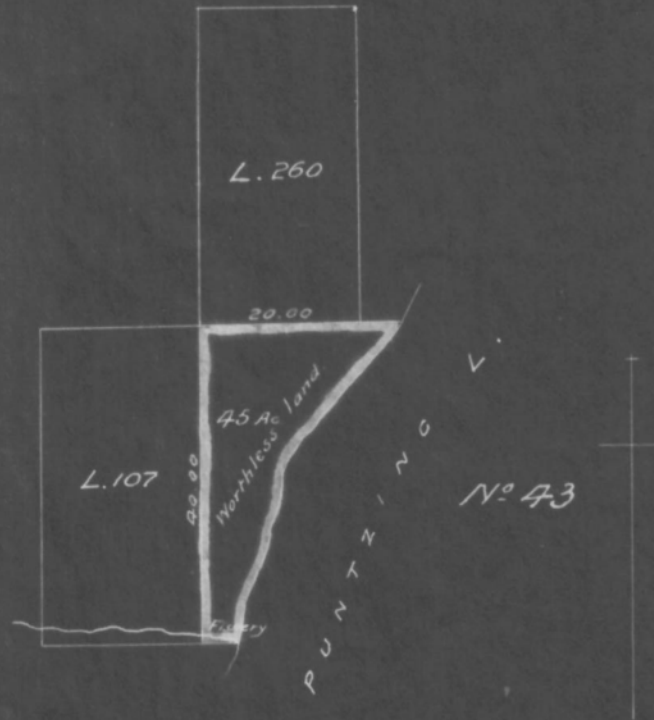
Ashton & Co.
B.C.L.



ALEXIS CREEK INDIANS.

RANGE 3. COAST DISTRICT.

— Scale 1 Inch = 20 Chains. —



*As shown & given
B.C.L.*

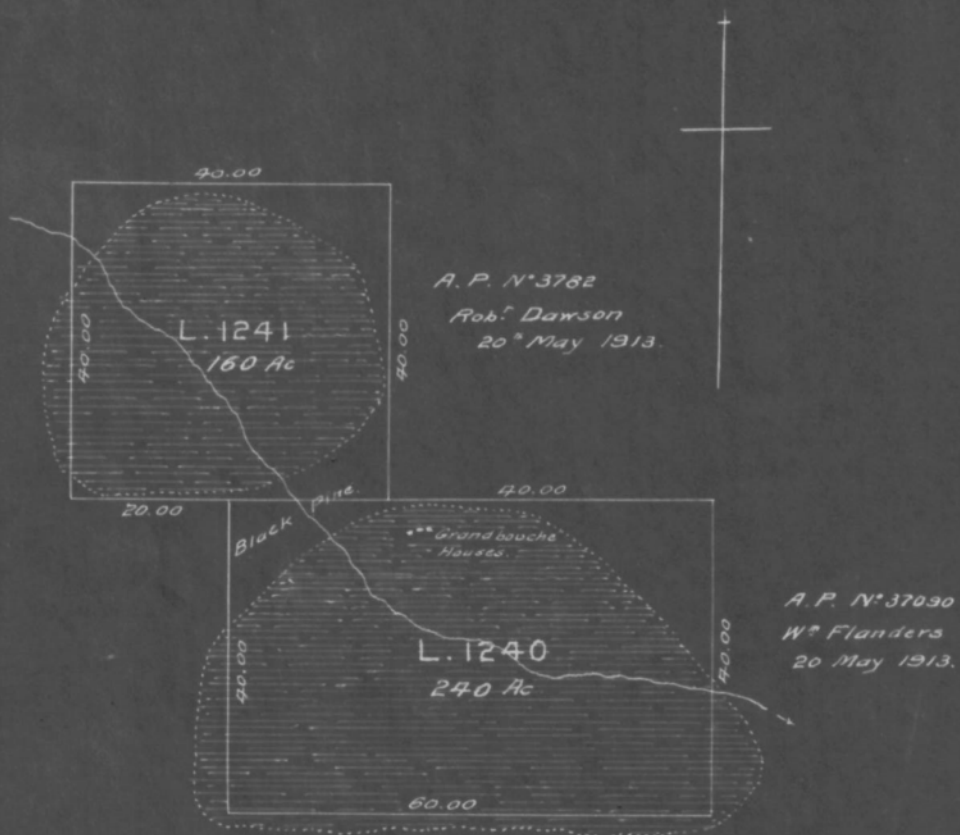
129822



N^o 44.

RANGE 3. COAST DISTRICT.

— Scale 1 Inch = 20 Chains. —



Ashdown & Green
W.E.G.



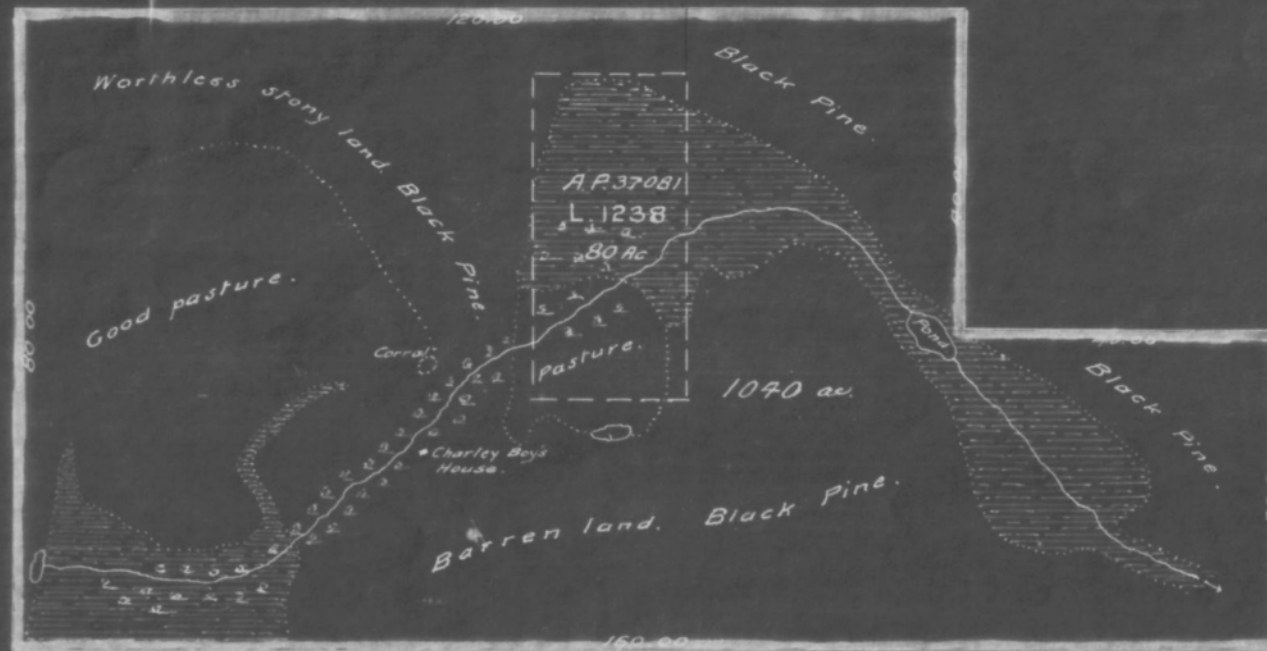
129822

Nº 45

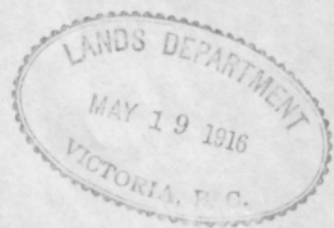
ALEXIS CREEK INDIANS.

RANGE 3. COAST DISTRICT.

— Scale 1 Inch = 20 Chains. —



Ashdown & Green
B.C.L.



129822



KEY PLAN
HLEXIS CREEK INDIANS.
RANGE 3. COAST DISTRICT.

— Scale 1 Inch = 3 Miles. —



*As shown & given
B.C.L.*

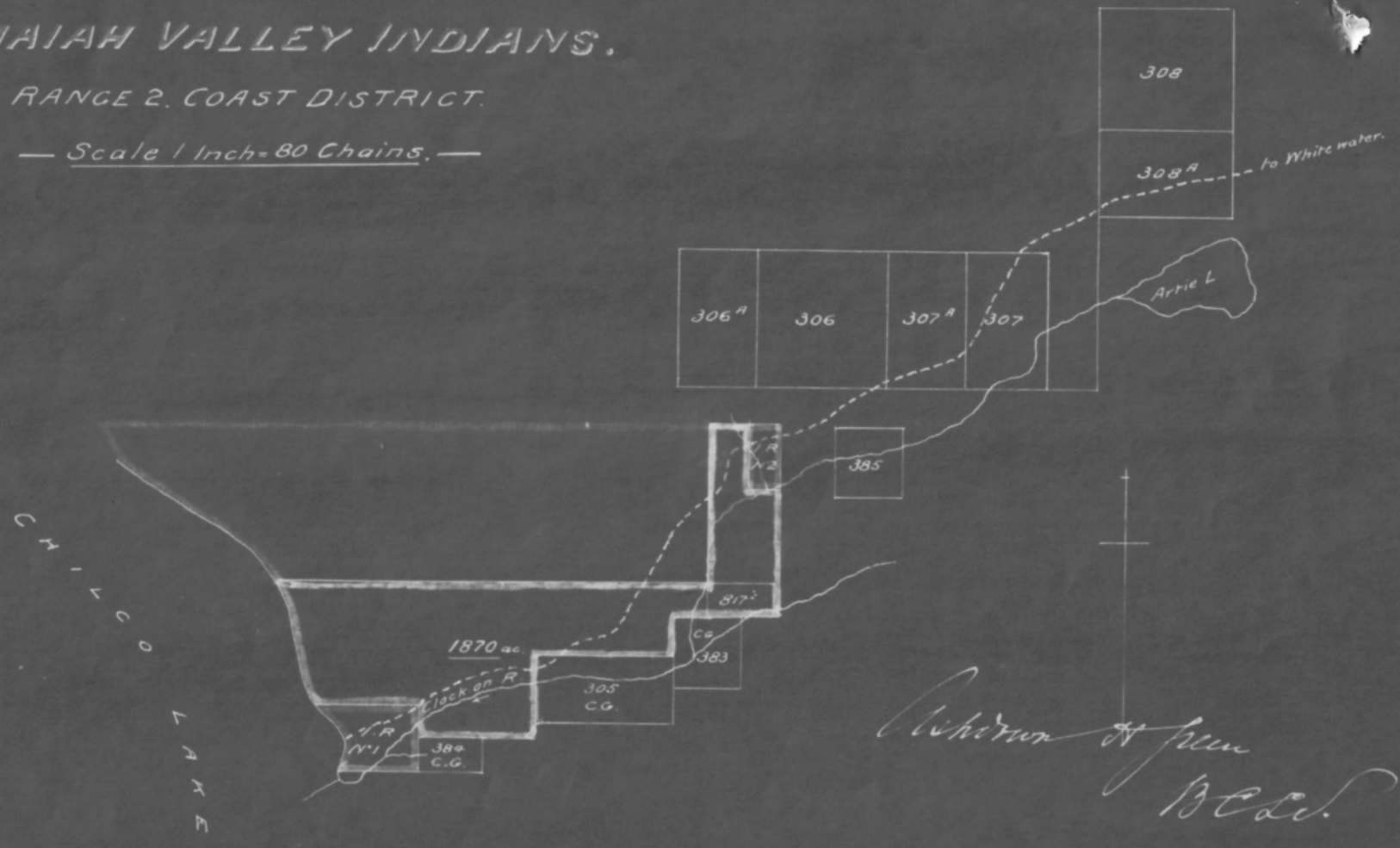


129822

NEMAIAH VALLEY INDIANS.

RANGE 2. COAST DISTRICT.

— Scale 1 Inch = 80 Chains. —





129822

ALEXANDRIA INDIANS.

CARIBOO DISTRICT.

— Scale 1 Inch = 20 Chains. —



Whitson & Green
B.C.L.



129822

ALEXANDRIA INDIANS,

CARIBOO DISTRICT.

— Scale 1 Inch = 20 Chains. —



Ashdron & Co
B.C.C.

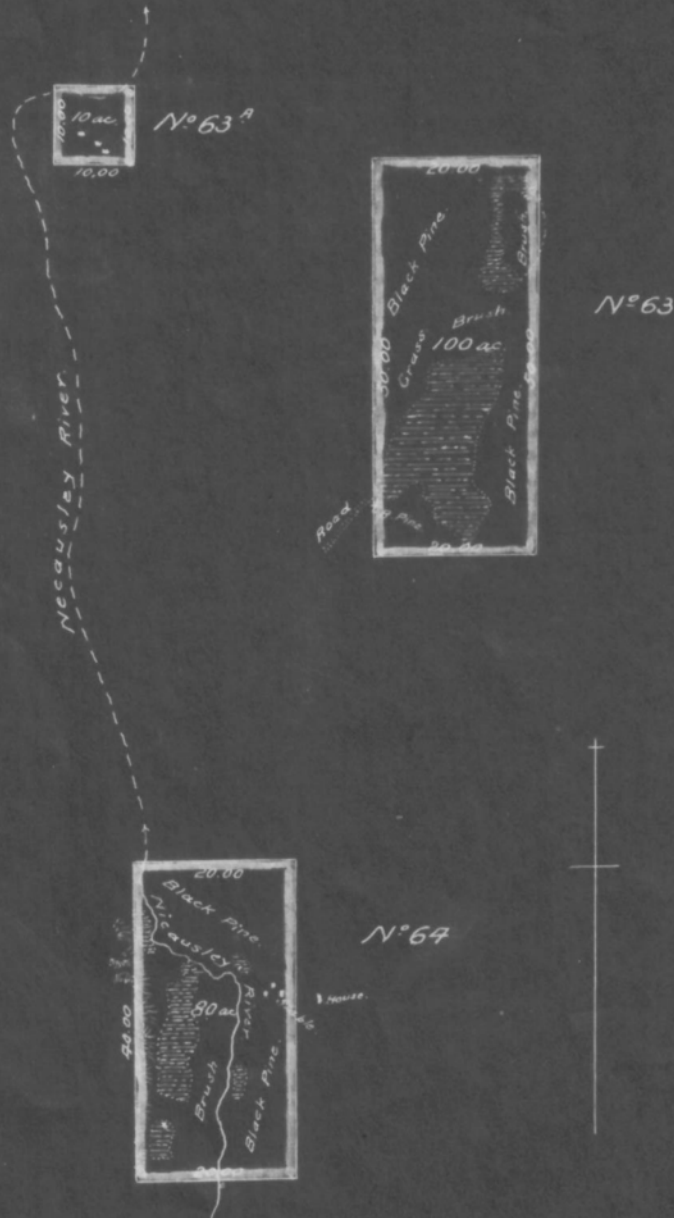


129822

ALEXANDRIA INDIANS.

CARIBOO DISTRICT.

— Scale 1 Inch = 20 Chains. —



Ashton & Green
B.C.L.

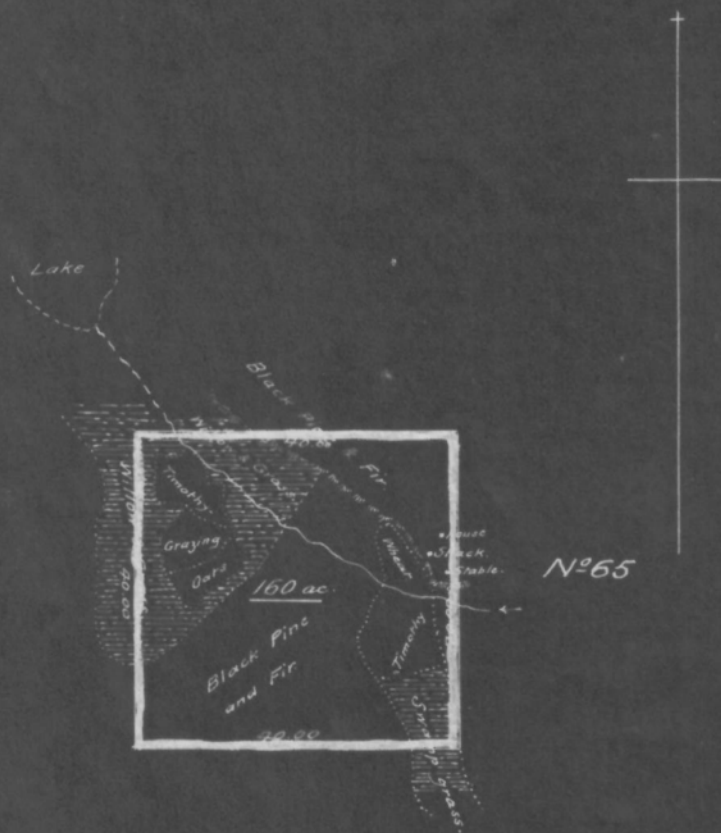


129822

ALEXANDRIA INDIANS.

CARIBOO DISTRICT.

— Scale 1 Inch = 20 Chains. —



*As shown & free
B.C.S.*



129822

KEY PLAN ALEXANDRIA INDIANS.

0 1 2 3 4 5 6 7 8 9 10 Miles



Whitman H. from
B.C.L.

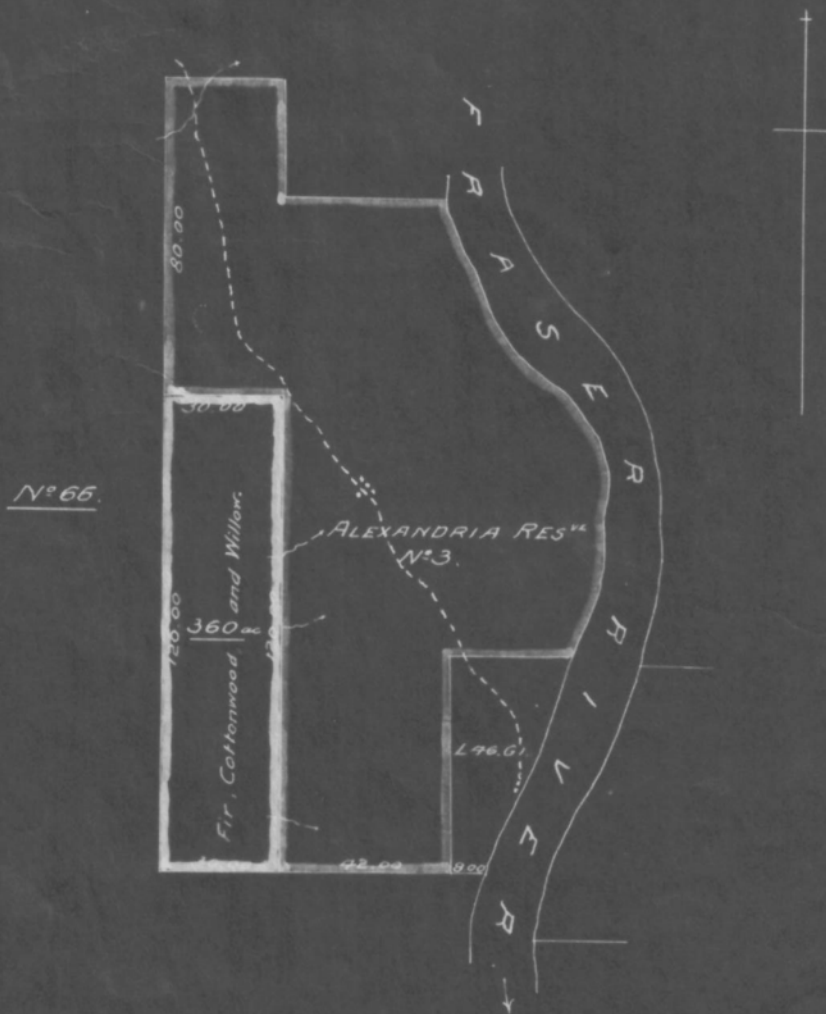


129822

ALEXANDRIA INDIANS.

CARIBOO DISTRICT.

— Scale 1 Inch = 40 Chains. —



Richard A. Green
B.C.S.



129822

File No.

123422/12

SUBJECT

193

NAME

Williams Lake Agency.

SUBJECT

*Final Allotment of
Lands for Indians*

Lands Department

CROSS REFERENCES

See Gen. File 82499

L.B. 101-5M-1132-1135

Q. Now his next application, is for 30 acres. What is that? Is that a meadow?

A. Yes.

Q. Is it a continuous meadow?

A. Yes.

Q. How long has he cut hay there?

A. For about fifteen years.

Q. And he cuts about 20 tons a year?

A. Yes.

Q. How many cattle has he?

A. I could not say, all the cattle are counted in the Canim Lake Reserve.

Q. And you consider that this land is reasonably required?

A. Yes.

Q. And the man is a good progressive Indian?

A. Yes, and he has a large family.

Q. He has no buildings on the reserve?

A. No.

Q. Would there be room for his getting adequate room on the Reserve?

A. No.

Mr. Commissioner Carmichael: The witness stated while giving his evidence that he had been bothered by a white man?

A. I don't think it would touch any of his land if it were surveyed. I don't think the white man would be on his land.

Mr. Commissioner McKenna: And you don't think the white man's buildings would be near him?

A. No.

Q. Now, we come to the application of Jimmy Dixon's, for a preemption of 160 acres?

A. I got his letter and the Department referred me to the Commission.

Q. Which Department?

A. The Department of Lands here. (which he hands into the Commission.)

259 291

-117-

Mr. Commissioner McKenna (reading from the letter put in by the witness): The application is dated from the 29th June, 1914, and also a letter from the Government Agent at Clinton respecting the said application.

Q. Is this man now occupying this land?

A. Yes.

Q. How long has he been there?

A. He was born there. His parents have been living there for years and years, and he was born there.

Q. And it has been recorded, I suppose, as the homestead of the family?

A. Yes.

Q. There are two houses there?

A. Yes.

Q. And a stable and chicken houses there?

A. Yes.

Q. Is the house pretty good?

A. Yes.

Q. Pretty good outbuildings?

A. Yes.

Q. Progressive Indians?

A. Yes.

Q. Good Indians?

A. Yes.

Q. What is the land like?

A. Good land for pasture, and he has a garden there.

Q. And I suppose there is some land on which he could raise timothy hay?

A. It is pretty hard to clear.

Q. Is it all fenced?

A. Not all, some of it is fenced.

Q. And you recommend the application for a preemption record?

A. Yes.

Mr. Commissioner Shaw: If that preemption was granted to these Indians it would not be part of an Indian reserve, it would

292

be Government land and as such subject to taxation?

A. Yes, certainly.

Q. What in your idea would be lost?

A. It would be for a reserve more, I think.

Mr. Commissioner Carmichael: There are two applications, one by

George Archie and Billy Decker. Have you anything to report

on these? recommend that they should get about 32 acres, is

A. I made applications for them some years ago.

Mr. Commissioner McKenna: Are these applications already in be-

fore the Department of Lands?

A. Yes, I put them in years ago.

Mr. Gibbons: There is no mention of them in the schedule of lands
applied for.

Mr. Commissioner McKenna: I find in the evidence given by George

Archie this statement: "When I came out of school I could

not live very well in this place (referring to the reserve)

because it was filled up. I went up the mountain and I have

a place up there where I have been living and working. The

place is described as four miles up the Halfway Ranch, half

way between the Reserve where we held the meeting and the

reserve. The wife had died and he had a brother living with

him as well as his wife's family, and his brother had 17 or

20 head of horses". Decker said he had a plow, harrow and a

wagon there. Then he says he was working on the upper place

until a white man came and threw him out of there, and now

this white man is there. Did you make any enquiry as to that?

A. Yes.

Q. What is the result of the enquiry?

A. He wants that half way house 8 miles west of Canim Lake Re-

serve No. 1. He has a house fencing and a corral there.

Is that the place where he was thrown out of?

A white man has taken part of that land but not the whole of

it. He had a son married to the family who lives with him.

He says his fence runs down to this man Bissell's. They cut

about 7 tons of wild hay, but it is mixed with peavine stuff.

24-293