

Sullivan, Michelle A HLTH:EX

From: Ray Copes <raycopes@telus.net>
Sent: February 2, 2021 4:57 PM
To: Henry, Bonnie HLTH:EX
Subject: Fwd: Weekend in Whistler COVID-19 Initiative
Attachments: Whistler COVID-19 Initiative Report Feb 2 2021.doc

[EXTERNAL] This email came from an external source. Only open attachments or links that you are expecting from a known sender.

Bonnie,

Do you get these updates through other sources?

Are they of any interest or just cluttering your inbox?

Thanks.

Ray

----- Forwarded message -----

From: Johnson, Al <Al.Johnson@worksafebc.com>
Date: Tue, Feb 2, 2021 at 1:51 PM
Subject: Weekend in Whistler COVID-19 Initiative
To: XT:HLTH Taki, Richard <Richard.Taki@vch.ca>, XT:Sinclair, Jim HLTH:IN <jsinclairbc@gmail.com>
Cc: Ray Copes <raycopes@telus.net>

Good afternoon, roll-up of our weekend Prevention activity, fyi, al.

Overview

WorkSafeBC conducted an inspectional and consultative initiative in Whistler January 30 and 31 to confirm that employers are fulfilling their obligation to protect workers from COVID-19 transmission through robust and functioning COVID-19 Safety Plans. Officers were deployed to conduct on-site inspections, and consultants contacted additional employers by phone to review employers' obligations and COVID-19 Safety Plans. Prevention Field Services (PFS) inspections were centered in high-density areas and focused on retail, grocery and liquor stores, hotels, and ski operations. The focus of our Consultation and Education Services (CES) consultations were primarily with hotels. Restaurants and dining establishments were not a primary focus as environmental health officers were concentrating on those workplaces over the same period of time. WorkSafeBC was in communication with Vancouver Coastal Health throughout the initiative to ensure coordination of the two organizations.

Results and Findings

Inspections and consultations - Focused COVID-19 inspections and consultations in sectors deemed high risk for COVID-19 transmission in Whistler

- **7** Prevention Officers and **9** OHS Consultants were assigned to the initiative
- **62** inspections and **38** consultations (by phone) were conducted
- 100% of the inspections were conducted on-site

- Inspections were focused in general retail (43), Bars and Restaurants (8), Grocery Stores (5), Liquor Stores (4) and Ski operations (1)
- Consultations were primarily with hotels
- **58%** of inspections resulted in orders – 35 locations received one order or more

Overview of Orders –The orders were related to deficiencies in the employer’s COVID-19 safety plans or the employer’s overall Health and Safety program. The infractions ranged from no evidence of a safety plan to updates required to the plans including health checks, PPE use, barriers, occupancy limit procedures/policy, procedures for positive cases, and posting of plan. Of note, 14 of the employers did not have evidence of a safety plan, all found in general retail.

The top cited orders were:

- WCA21(1)(a) – Requirement to ensure the health and safety of workers present in the workplace
- OHS5.2(c) related to written procedures to eliminate or minimize a risk of exposure to a biologic agent

Next Steps:

WorkSafeBC will continue to have a presence in Whistler in the coming week. Two officers will be conducting further inspections of larger employers that were unavailable this weekend.

A detailed report including the employer inspection and consultation list is attached for reference:

Al Johnson

Head of Prevention Services | T: 604.276.3302 | C: 604.868.8379

WorkSafeBC

As more information and resources about COVID-19 become available, we will continue to update the COVID-19 section of our website at worksafebc.com. Follow us on [Facebook](#), [Twitter](#), [LinkedIn](#), [Instagram](#), and [YouTube](#) for the latest announcements, jobs, workplace health and safety resources, and news from WorkSafeBC.

CONFIDENTIALITY DISCLAIMER

The information contained in this transmission may contain privileged and confidential information of WorkSafeBC - the Workers' Compensation Board. It is intended for review only by the person(s) named above. Dissemination, distribution or duplication of this communication is strictly prohibited by all recipients unless expressly authorized otherwise. If you are not the intended recipient, please contact the sender by reply email and destroy all copies of the original message. Thank you.

C-19 – Whistler 2021

Overview

In recent weeks Whistler resort community has seen a growing number of COVID-19 cases across many industries including restaurants, hotels and retail stores.

In response, WorkSafeBC conducted an inspectional and consultative initiative in Whistler January 30 and 31 to confirm that employers are fulfilling their obligation to protect workers from COVID-19 transmission through robust and functioning COVID-19 Safety Plans. Officers were deployed to conduct on-site inspections, and consultants contacted additional employers by phone to review employers' obligations and COVID-19 Safety Plans. Inspections were centered in high-density areas and focused on retail, grocery and liquor stores, hotels, and ski operations.

WorkSafeBC was in communication with Vancouver Coastal Health throughout the initiative to ensure coordination of the two organizations.

Results and Findings

Officers completed 62 inspections in the Whistler resort community on January 30th and January 31st. The inspections were primarily focused in retail, grocery and liquor stores, and ski operations. The focus of the CES consultations were primarily with hotels. Restaurants and dining establishments were not a primary focus as environmental health officers were concentrating on those workplaces over the same period of time.

	Jan 30 - 31
Inspections completed	62
On-site inspections	62
Non-site visit inspections	0
% inspections completed on-site	100%
Inspections with orders	35
% of inspections with orders	58%
Consultations completed	38

The following is a breakdown of inspections by industry.

Industry	Inspections
General Retail	43
Retail (liquor stores)	4
Retail (Grocery stores)	5
Bar and Restaurants	8
Ski Operations	1
Professional Services - Dental Office	1
Total	62

A total of 35 employers were issued orders (57%). The orders were related to deficiencies in the employer's COVID-19 safety plans or the employer's overall Health and Safety program. The infractions ranged from no evidence of a safety plan, to updates being required to the plans including health checks, PPE use, barriers, occupancy limit procedures/policy, procedures for positive cases, and posting of plan. The top cited orders were:

- WCA21(1)(a) – Requirement to ensure the health and safety of workers present in the workplace
- OHS5.2(c) related to written procedures to eliminate or minimize a risk of exposure to a biologic agent

Findings from the inspections and discussion with workers and employers indicate a potential cause for the transmission of COVID-19 is the result of multiple people sharing a residence (8-10 people)

Next Steps

WorkSafeBC will continue to have a presence in Whistler in the coming week. One OHO and one OSO will be conducting further inspections of larger employers that were unavailable this weekend.

Detailed Results

Inspections: The following outlines the list of employers in Whistler that were **inspected** on January 30th and 31st:

Employer	Industry	Orders
Whistler Dental	Dental Office	s.13; s.17
Nesters Market	Grocery	
Fresh St. Market - Grocer	Grocery	
Creekside Market	Grocery	
The Grocery Store	Grocery	
Upper Village Market - grocery store	Grocery	
Whistler Liquor Store	Liquor store	
BC Liquor Store - Retail (Liquor)	Liquor store	
Nesters Liquor (separate emp from market)	Liquor store	
Blackcomb Liquor Store - Liquor store	Liquor store	
Bred Organic Sourdough	Restaurant	
PureBread, Bakery	Restaurant	
O&R Restaurants Inc. (Hot Buns Cafe)	Restaurant	
Garabaldi Lift Co - bar/ restaurant	Restaurant	
Longhorns - bar/restaurant	Restaurant	
Wizard Grill - restaurant	Restaurant	
Braidwood - restaurant	Restaurant	
Mallards Lounge - restaurant	Restaurant	
Escape Route - Retail (Sporting Goods)	Retail	
Tthe Great Glass Elevator Candy Shop - Retail (Candy)	Retail	
Whistler Kitchen Works - Retail (Kitchen Wares)	Retail	
Senka Florist - Flower shop	Retail	
Art Junction Gallery - art gallery	Retail	
Whistler Rainbow Supply - retail	Retail	
whistler furniture - retail	Retail	
Galibardi Graphics - retail/printing	Retail	
Black Tie Ski Rentals	Retail	
whistler happy pets - retail	Retail	
Amy-Raffety- Retail	Retail	
Cuban Cigar	Retail	
McCoos	Retail	
1095426 BC Ltd. (The Plaza Galleries)	Retail	
Billabong Boardriders	Retail	
0908926 BC Ltd. (Peak Performance)	Retail	
Hatley Little Blue House Inc.	Retail	
Premium Mountain Rental	Retail	
Carlsburg Gifts	Retail	
Roots	Retail	
Cach & Co.	Retail	
Coastal Culture	Retail	
Fanatyk Ski and Cycle	Retail	

112 West	Retail	s.13; s.17
The Sherwin Williams - retail	Retail	
Get the Goods	Retail	
Spicy Sports Whistler - retail	Retail	
Evo - retail	Retail	
Can Ski Performance - Retail (Sporting Goods)	Retail	
Rexall Drugs	Retail	
BC Liquor Store	Retail	
Whistler Hardware	Retail	
EVO - retail	Retail	
Rocks and Gems Canada	Retail	
Function Junction Hardware	Retail	
Can Ski Performance - Retail (Sporting Goods)	Retail	
Arcteryx - Retail (Jackets)	Retail	
Coastal Culture (Cool as a Moose)	Retail	
Cows Inc.	Retail	
The Gap	Retail	
Patagonia - Retail (Clothing)	Retail	
Whistler Blackcomb (North Face Store)	Retail	
Blacktie Ski & Board - equipment rental	Retail	
Whistler Blackcomb - ski hill	Ski Operations	

Consultations: The following outlines the list of employers in Whistler that were **consulted** on January 30th and 31st:

Employers contacted:

In total CES consultants connected with thirty-eight employers (note that not all contacts will result in a CR because some of the locations confirmed closure).

559942 - WORLDMARK THE CLUB
559942 - WORLDMARK THE CLUB
622277 - THE OWNERS STRATA CORP LMS 2940
636298 - WW NTI LIMITED
639906 - OHR WHISTLER MANAGEMENT LTD.
688702 - GOLFBBC HOLDINGS INC
701455 - FS WHISTLER HOLDINGS LIMITED
814706 - FHR WHISTLER OPERATIONS CORPORATION
857500 - WHISTLER BLACKCOMB HOLDINGS INC
857500 - WHISTLER BLACKCOMB HOLDINGS INC
962739 - DIAMOND RESORTS CANADA LTD.
200037420 - 2162161 ALBERTA LTD.
278706 - TANTALUS MANAGEMENT INC
293099 - SVC MOUNTAINSIDE ULC
302860 - FIREPLACE INNS CO LTD
347466 - WVI ENTERPRISES LTD.
384215 - LISTEL CANADA LTD
482534 - VACATION INTERNATIONALE INC
577171 - PINNACLE INTERNATIONAL HOTELS AND RESORTS INC
582845 - WHISTLER VACATION CLUB AT TWIN PEAKS
656452 - BREW CREEK LODGE 2000 LTD.
723463 - WHISTLER RECEPTION SERVICES LTD.
843560 - WHISTLER 2010 SPORT LEGACIES SOCIETY
866961 - ADARA HOTEL OWNERS MANAGEMENT CORPORATION
921812 - NLL MANAGEMENT (2013) LTD.
962102 - ABBEY MANAGEMENT (2015) LTD.
965482 - AAVA WHISTLER HOTEL GP LTD

975536 - CONCORD SUNDIAL MANAGEMENT INC.
 980156 - WHISKI JACK RESORTS (WHISTLER) LTD.
 200089520 - APPTICK HOLDINGS CANADA LTD.
 200241821 - SUMMIT RESORT MPM INC.
 541361 - WHISTLER SNOWBOARD TOURS LTD
 200097774 - BLACKCOMB LODGE LTD.
 818039 - FHP (CANADA) MANAGEMENT COMPANY INC
 953471 - LEE & PARK WHISTLER VACATION RENTALS LTD.
 984315 - PANGA WHISTLER ENTERPRISES INC
 590779 - JOERN ROHDE
 957846 - WHISTLER IDEAL ACCOMMODATIONS LTD.

The following employers were included in our initial list; however, they did not result in a consultation for a two primary reasons; closure or unable to reach a representative:

104964 - TRUE NORTH HOSTELLING ASSOCIATION
 597781 - ONE WHISTLER VILLAGE PARTNERS LIMITED
 857500 - WHISTLER BLACKCOMB HOLDINGS INC
 347466 - WVI ENTERPRISES LTD.
 581385 - EVANS LAKE FOREST EDUCATION SOCIETY
 582845 - WHISTLER VACATION CLUB AT TWIN PEAKS
 689328 - BELLA COOLA HELI SPORTS INC.
 324548 - FIRESIDE OUTDOOR RECREATION CLUB
 795479 - NISKA RESORT MANAGEMENT LTD.

Key messages/discussion:

- Awareness of the outbreak in Whistler
- Ensuring a COVID Safety Plan is in place and that the employer is keeping it up to date and staying true to the plan
- Addressing and assisting with any challenges the employer may be having with the plan
- Pointing them in the direction of resources on our website or through other avenues (i.e., HSAs)

High level findings:

As a result of these consults, two referrals were made for further field support. Of interest qualitatively, anecdotal comments made by the employers are noted as follows:

- Multiple comments about being very appreciative of the outreach and support
- Frustration (not at us) over doing things right but still having the public not being respectful of the PHO orders
- Recognition of the co-ordinated efforts by multiple agencies
- Appreciation for the resources that have been developed and made available
- The difficulties in trying to manage groups that pre-plan to work around the PHO orders especially regarding maximum group size
- Struggles to get clear direction from property management companies that manage multiple location (lack of consistency and decisiveness).

Sullivan, Michelle A HLTH:EX

From: van Baarsen, Amanda HLTH:EX
Sent: February 1, 2021 12:40 PM
To: Henry, Bonnie HLTH:EX; Dix, Adrian HLTH:EX
Cc: MacDonald, Alex HLTH:EX; Brown, Stephen R HLTH:EX
Subject: RE: Whistler + resort order

Thanks both,

Mayor Jack Crompton's cell is:^{s.17}

Municipal Affairs has provided the following additional context for what he is looking for:

- Clarity around day trips as there is significant local concern about Vancouver residents coming to Whistler
s.13

From: Henry, Bonnie HLTH:EX <Bonnie.Henry@gov.bc.ca>
Sent: February 1, 2021 11:43 AM
To: Dix, Adrian HLTH:EX <Adrian.Dix@gov.bc.ca>
Cc: van Baarsen, Amanda HLTH:EX <Amanda.vanBaarsen@gov.bc.ca>; MacDonald, Alex HLTH:EX <Alex.MacDonald@gov.bc.ca>; Brown, Stephen R HLTH:EX <Stephen.Brown@gov.bc.ca>
Subject: RE: Whistler + resort order

That might be helpful or we could do it together later today

Dr Bonnie Henry
Provincial Health Officer
Office of the PHO
Ministry of Health
s.15; s.19

Mailing address: PO Box 9648, STN PROV GOVT
Victoria, BC
V8W 9P4
Bonnie.henry@gov.bc.ca

Phone:^{s.17}; ^{s.19}

I gratefully acknowledge that I live and work on the traditional unceded territory of the Lekwungen Peoples, specifically the Songhees and Esquimalt First Nations. Hay'sxw'qu Si'em

Warning: This email is intended only for the use of the individual or organization to whom it is addressed. It may contain information that is privileged or confidential. Any distribution, disclosure, copying, or other use by anyone else is strictly prohibited. If you have received this in error, please telephone or e-mail the sender immediately and delete the message.

From: Dix, Adrian HLTH:EX <Adrian.Dix@gov.bc.ca>
Sent: February 1, 2021 11:38 AM
To: Henry, Bonnie HLTH:EX <Bonnie.Henry@gov.bc.ca>
Cc: van Baarsen, Amanda HLTH:EX <Amanda.vanBaarsen@gov.bc.ca>; MacDonald, Alex HLTH:EX <Alex.MacDonald@gov.bc.ca>; Brown, Stephen R HLTH:EX <Stephen.Brown@gov.bc.ca>
Subject: Re: Whistler + resort order

Why I don't I give him a call to check in and understand better?

Sent from my iPad

On Feb 1, 2021, at 11:36 AM, Henry, Bonnie HLTH:EX <Bonnie.Henry@gov.bc.ca> wrote:

Brian has not been leading this discussion. I have not seen the invite for tomorrow but do understand there is a call. This has been discussed with TAC and day trips was a proxy for local as we are seeing that the issue is not skiing per se but the pre and post.

I still do not understand what the Mayor's concerns are?

b

*Dr Bonnie Henry
Provincial Health Officer
Office of the PHO
Ministry of Health*

s.15; s.19

*Mailing address: PO Box 9648, STN PROV GOVT
Victoria, BC
V8W 9P4
Bonnie.henry@gov.bc.ca*

Phone: s.17; s.19

I gratefully acknowledge that I live and work on the traditional unceded territory of the Lekwungen Peoples, specifically the Songhees and Esquimalt First Nations. Hay'sxw'qu Si'em

Warning: This email is intended only for the use of the individual or organization to whom it is addressed. It may contain information that is privileged or confidential. Any distribution, disclosure, copying, or other use by anyone else is strictly prohibited. If you have received this in error, please telephone or e-mail the sender immediately and delete the message.

From: van Baarsen, Amanda HLTH:EX <Amanda.vanBaarsen@gov.bc.ca>
Sent: February 1, 2021 11:10 AM
To: Henry, Bonnie HLTH:EX <Bonnie.Henry@gov.bc.ca>; Dix, Adrian HLTH:EX <Adrian.Dix@gov.bc.ca>
Cc: MacDonald, Alex HLTH:EX <Alex.MacDonald@gov.bc.ca>
Subject: Whistler + resort order

Good morning Minister, Bonnie,

We've received a request from the Ministry of Municipal Affairs for someone from the PHO to chat with the Mayor of Whistler regarding the mention of "day trips" being ok – for sometime today.

There was a bit of discussion via email with Bonnie last week, culminating in the following messages shared with the Mayor:

- Obviously the best choice for people in the Lower Mainland is to stay as local as possible and stick to the North Shore mountains.
- But people shouldn't go farther to ski than what they can do in a day trip – that's the bottom line.
- So if you're going to Whistler to ski, make it a day trip with your household and leave the apres-ski activities for another time – that's where we're seeing more issues with transmission.
- In other words, go straight to the hill, enjoy a day skiing and head home.
- Your top priority needs to be protecting people who live in Whistler. Now is not the time for a weekend getaway, or an apres-ski gathering with friends.

However, the Mayor would still like a further conversation. Noting that there may be an order change or a new order regarding resorts coming on Tuesday (I have heard, but would love more details), the Ministry of Municipal Affairs is suggesting a call to the Mayor of Whistler in advance would be desirable.

It has been suggested that staff from Tourism Arts and Culture be on the line as well to ensure folks remain on the same page.

How would you like to proceed? Would a call between Dr Emerson and the Mayor suffice?

A

Amanda van Baarsen

Sr Ministerial Advisor to

Hon. Adrian Dix, Minister of Health

Room 337 | Parliament Buildings, Victoria, BC | V8V 1X4

(P) 778-974-5075 (C) 778-678-3454

Pronouns: she/hers

Fwd: for INFORMATION>Tourism Winter Preparation Call, 3pm Friday. Nov. 20

From: van Baarsen, Amanda HLTH:EX <Amanda.vanBaarsen@gov.bc.ca>
To: Dix, Adrian HLTH:EX <Adrian.Dix@gov.bc.ca>
Sent: November 19, 2020 5:19:07 PM PST
Apparently you are chairing the call!

Will reach out again to our DMO to confirm.

Sent from my iPhone

Begin forwarded message:

On Nov 19, 2020, at 5:15 PM, Gardea, Daniela TAC:EX
<Daniela.Gardea@gov.bc.ca> wrote:

Hey there,

Our DM was asked by Don Wright to send out this invite. Making sure it's ok with you?

I've been told Adrian Dix will chair the call.

Begin forwarded message:

From: "Brouwer, Shauna TAC:EX" <Shauna.Brouwer@gov.bc.ca>
Date: November 19, 2020 at 4:50:36 PM PST
To: "Beare, Lisa TAC:EX" <Lisa.Beare@gov.bc.ca>, "Gardea, Daniela TAC:EX" <Daniela.Gardea@gov.bc.ca>
Subject: for INFORMATION>Tourism Winter Preparation Call, 3pm Friday. Nov. 20

Good Afternoon,

By now you should have received an invitation to a call scheduled for 3pm tomorrow, Friday Nov. 20. Through this call, we are hoping to further our dialogue with the tourism industry regarding the COVID-19 situation.

We are specifically looking to hear from industry about:

- Work that has already been undertaken to prepare for and ensure a safe winter operating season for all (employees, visitors and local communities) and any concerns that have arisen through this process (e.g., employee housing, contract tracing, ensuring compliance, etc.); and

- How industry is planning to communicate their safety protocols and preparation activities to the public (e.g., what measures are being utilized to provide “know before you go” public safety and compliance information and build public confidence).

The meeting will be chaired by a government representative, who will provide opening remarks and further context before inviting input from the industry representatives who have been invited. When creating the invite list for this meeting, in addition to our Tourism Task Force (TTF) members we also looked to include representatives from the sub-sectors who are most likely to be impacted this winter season (see list below).

We look forward to hearing your thoughts tomorrow.

Sincerely,

SB

Invited Industry Representatives (alphabetical by last name)

- Michael J Ballingall, Senior Vice President Big White Ski Resort
- Brenda Baptiste, Chair, Indigenous Tourism BC (TTF Member)
- Anthony Everett, President & CEO, Tourism Vancouver Island
- Barrett Fisher, President & CEO, Tourism Whistler
- Rod Harris, Adjunct Professor, Royal Road University (TTF Member)
- Ingrid Jarrett, President & CEO, BC Hotel Association (TTF Member)
- Walt Judas, CEO, Tourism Industry Association of BC (TTF Member)
- Glenn Mandziuk, Vice-Chair, Minister’s Tourism Engagement Council, and President & CEO, Thompson Okanagan Tourism Association (TTF Member)
- Gavin McGarrigle, Western Director, UNIFOR (TTF Member)
- Christopher Nicholson, President & CEO, Canada West Ski Areas Association
- Richard Porges, Interim President & CEO, Destination BC (TTF Member)
- Nancy Small, Chair, BC Destination Management Organization Association, Tourism Richmond (TTF Member)
- Stephanie Smith, President BCGEU (TTF Member)
- Amy Thacker, Chair, BC Tourism Regional Secretariat, and CEO, Cariboo Chilcotin Coast Tourism Association (TTF Member)
- Tamara Vrooman, President & CEO, Vancouver International Airport (TTF Chair)

Fwd: for the call FW: Tourism Winter Preparation Call, 3pm Friday. Nov. 20

From: van Baarsen, Amanda HLTH:EX <Amanda.vanBaarsen@gov.bc.ca>
To: Dix, Adrian HLTH:EX <Adrian.Dix@gov.bc.ca>
Sent: November 20, 2020 2:16:31 PM PST
For the call today. Read below.

Sent from my iPhone

Begin forwarded message:

From: "Gardea, Daniela TAC:EX" <Daniela.Gardea@gov.bc.ca>
Date: November 20, 2020 at 2:06:11 PM PST
To: "van Baarsen, Amanda HLTH:EX" <Amanda.vanBaarsen@gov.bc.ca>
Subject: Fwd: for the call FW: Tourism Winter Preparation Call, 3pm Friday. Nov. 20

From my DM.

Begin forwarded message:

From: "Brouwer, Shauna TAC:EX" <Shauna.Brouwer@gov.bc.ca>
Date: November 20, 2020 at 2:04:15 PM PST
To: "Gardea, Daniela TAC:EX" <Daniela.Gardea@gov.bc.ca>
Subject: for the call FW: Tourism Winter Preparation Call, 3pm Friday. Nov. 20

From: Brouwer, Shauna TAC:EX
Sent: November 20, 2020 11:22 AM
To: Marshall, Autumn TAC:EX <Autumn.Marshall@gov.bc.ca>
Subject: Tourism Winter Preparation Call, 3pm Friday. Nov. 20

For Don Wright's information for the 3pm call – please forward to his assistant thx

1. A grouping of industry and regional areas:

- a. Ski – Christopher Nicholson, Michael Ballingall & Barrett Fisher
- b. Hotels – Ingrid Jarrett
- c. Regional – Glenn Mandziuk, Amy Thacker, Anthony Everett (Anthony can also speak to "snow birds" & communication efforts)
- d. Aviation – Tamara Vrooman
- e. Indigenous Tourism – Brenda Baptiste
- f. Industry Preparation – Walt Judas
- g. Labour – Gavin McGarrigle & Stephanie Smith

This grouping may assist with moderating the call, within the time allotted.

2. We are specifically looking to hear from industry about:

- Work that has already been undertaken to prepare for and ensure a safe winter operating season for all (employees, visitors and local communities) and any concerns that have arisen through this process (e.g., employee housing, contract tracing, ensuring compliance, etc.); and
- How industry is planning to communicate their safety protocols and preparation activities to the public (e.g., what measures are being utilized to provide “know before you go” public safety and compliance information and build public confidence).

The meeting will be chaired by a government representative, who will provide opening remarks and further context before inviting input from the industry representatives who have been invited. When creating the invite list for this meeting, in addition to our Tourism Task Force (TTF) members we also looked to include representatives from the sub-sectors who are most likely to be impacted this winter season (see list below).

Invited Industry Representatives (alphabetical by last name)

- Michael J Ballingall, Senior Vice President Big White Ski Resort
- Brenda Baptiste, Chair, Indigenous Tourism BC (TTF Member)
- Anthony Everett, President & CEO, Tourism Vancouver Island
- Barrett Fisher, President & CEO, Tourism Whistler
- Rod Harris, Adjunct Professor, Royal Road University (TTF Member)
- Ingrid Jarrett, President & CEO, BC Hotel Association (TTF Member)
- Walt Judas, CEO, Tourism Industry Association of BC (TTF Member)
- Glenn Mandziuk, Vice-Chair, Minister’s Tourism Engagement Council, and President & CEO, Thompson Okanagan Tourism Association (TTF Member)
- Gavin McGarrigle, Western Director, UNIFOR (TTF Member)
- Christopher Nicholson, President & CEO, Canada West Ski Areas Association
- Richard Porges, Interim President & CEO, Destination BC (TTF Member)
- Nancy Small, Chair, BC Destination Management Organization Association, Tourism Richmond (TTF Member)
- Stephanie Smith, President BCGEU (TTF Member)
- Amy Thacker, Chair, BC Tourism Regional Secretariat, and CEO, Cariboo Chilcotin Coast Tourism Association (TTF Member)
- Tamara Vrooman, President & CEO, Vancouver International Airport (TTF Chair)

Travel Advisory - Whistler Season Pass Holders and Second Home Owners

From: s.22 >
To: Dix, Adrian HLTH:EX <Adrian.Dix@gov.bc.ca>, Henry, Bonnie HLTH:EX <Bonnie.Henry@gov.bc.ca>
Cc: karin.kirkpatrick@bcliberals.com, jcrompton@whistler.ca
Sent: November 27, 2020 4:47:12 PM PST

[EXTERNAL] This email came from an external source. Only open attachments or links that you are expecting from a known sender.

Dr. Henry and Minister Dix:

Based on conversations with Vancouver friends who have season passes and second residences in Whistler; comments online, and that Whistler Blackcomb's reservation system has sold out, I believe the travel advisory as it applies to season pass holders and Vancouverites with second homes in Whistler will be largely ignored. That will result in thousands of people traveling from Vancouver to Whistler every weekend and holiday starting today.

The interplay between economics and ski culture driving this behavior may not be obvious. I'll try to, in part, explain it. I'll then provide a suggestion as to how to minimize the harm.

BACKGROUND

I am a s.22 at Whistler Blackcomb and have been s.22 I am also a s.22
s.22 As such, I may have a unique insight into the culture of dedicated skiers and the challenges of effecting broad-based behavioral change at a population level within a rules-based system.

It also means that as s.22 ski season is not at risk. My community is.
s.22

s.22 I do not know the exact number of people who do the same, however, I'm confident it numbers in the thousands every weekend and holiday. (Whistler Blackcomb, Tourism Whistler, or the Resort Municipality of Whistler may have accurate numbers.)

Based on s.22 and that Whistler's reservation is sold out and has been for some time, I am confident a significant majority of season pass holders and second home owners are going to defy your travel advisory and go to Whistler this weekend and every weekend.

WHY SECOND HOMEOWNERS/SEASONS PASS WILL NOT FOLLOW THE TRAVEL ADVISORY

If you are perplexed as to why, given that we are in a global pandemic, people fortunate enough to own multiple homes can't take a break from skiing, or ski at Grouse, Cypress, or Mount Seymour, that is understandable. I will try to explain why.

a) ECONOMICS

Second homeowners and season pass holders are fortunate. However, their recourses are not unlimited. Unlike day skiers, who can modify plans and ski at Grouse, Cypress, or Seymour without financial penalty, second homeowners and season pass holders have financially committed to skiing in, and only in, Whistler.

Housing a family in Whistler costs a minimum of \$25,000 per ski season. Mountain passes for a family of four is an additional \$4000. For a family that's skies s.22 that works out to approximately \$750 per day of skiing or \$1500 per skiing weekend. That money is spent. It can not be recovered. It can not be redirected. It's gone.

Having spent that money, many families do not have the budgets to pay the additional cost to ski at Grouse, Cypress, or Seymour.

The practical effect of the travel advisory on season pass holders and second homeowners then is not a choice to ski at Whistler or in Vancouver. It is a choice between skiing at Whistler or writing off \$750 per day and not skiing at all. Faced with that choice, the majority will choose skiing at Whistler.

b) A LOVE OF SKIING

For thousands of people in the lower mainland who have seasons passes and/or second homes in Whistler, skiing is slightly more sustaining to life than oxygen. If you are not a passionate skier that may sound odd, even frivolous, but for

many, it's a fact. This group will not easily give up the opportunity to be outside, with their family, doing a sport they love on a mountain they call home.

If you doubt the degree of dedication skiers have to their sport, consider how much money flows into Whistler coffers in pursuit of what is in essence, an athletic endeavor. I know of no other sport where that happens to the same degree.

c) SKIING IS A HEALTHY WINTER COPING MECHANISM

Many second homeowners and season pass holders work in high-stress professions. They are doctors, nurses, lawyers, engineers, teachers, executives, and business owners. Skiing gets them outside, with their families, and exercising all winter. It is how they cope. It keeps them sane.

d) WHISTLER IS THEIR COMMUNITY

Having committed years to life in Whistler, been active with various businesses/charities, and paid property taxes to fund the Whistler municipality, many families consider Whistler to be their "local" mountain, notwithstanding that they spend over half their time in Vancouver. For many of them, it is where they "live." It is their community. It's where they feel at home. Vancouver is where they work.

HARM REDUCTION

For the reasons above, I believe thousands of people will leave Vancouver and ski in Whistler over the upcoming weekends notwithstanding the travel advisory.

As such you may wish to consider modifying your messaging as it applies to season pass holders and second homeowners to stress harm reduction, over what for many, is a form of abstinence.

For example, you may wish to say:

For those who have committed to the *full* ski season in any of BC's resorts, we ask that if you go to those mountains you do so safely.

This means you bring your own groceries. You have your *own* place to stay if you plan to remain overnight. You have no interactions with the local community. You ski only with members of your household, or your immediate bubble if you live alone. You follow all of the COVID safety protocols of the mountains you visit.

If you are going for the day, you go straight from your car, to the lift, and when the ski day is over, straight back home.

This is not the time for beers and après with your friends. It is not the time to mingle on the mountain. It is not time to pick up supplies along the way.

This is the time to be safe, be active, be outside, be healthy, be strong, and but for your immediate household, be apart.

I appreciate that modifying a policy that is otherwise good for the community because thousands of privileged skiers can't find the motivation to stay in Vancouver is frustrating. However, given the reality of what is happening, or is about to happen, I'd ask that you consider it.

I'd also ask that you not, for the good of the Whistler community, consider closing Whistler Blackcomb because Vancouverites can't stay away. Whistler Blackcomb has worked and continues to work tirelessly to keep its guests, and its employees safe. Whistler Blackcomb is not the problem.

Thank you both for your time and tireless efforts on behalf of us all.

Morning Call with Bonnie

From: van Baarsen, Amanda HLTH:EX <Amanda.vanBaarsen@gov.bc.ca>
To: Dix, Adrian HLTH:EX <Adrian.Dix@gov.bc.ca>
Cc: MacDonald, Alex HLTH:EX <Alex.MacDonald@gov.bc.ca>, Yeung, Lucinda HLTH:EX <Lucinda.Yeung@gov.bc.ca>, Szabo, Maria HLTH:EX <Maria.Szabo@gov.bc.ca>, Pham, Thuy HLTH:EX <Thuy.Pham@gov.bc.ca>
Sent: February 2, 2021 9:12:23 AM PST
Attachments: NR 2021 Winter COVID update Draft 6.docx, Briefing Note- response to PHSA board regarding blog on schools.docx

- Andre Picard's article yesterday speaks to where we're at: <https://www.theglobeandmail.com/opinion/article-things-are-looking-up-in-our-pandemic-fight-so-keep-locking-down>
- Angela Sterritt's article is published and she has done some morning media: https://www.cbc.ca/news/canada/british-columbia/medical-health-officer-vaccine-indigenous-community-1.5890828?_vfz=medium%3Dsharebar
 - References the audio of the voicemail here: <https://twitter.com/AngelaSterritt/status/1356625989632020481?s=20>
 - Questions whether he is still employed here: <https://twitter.com/AngelaSterritt/status/1356614160222724096?s=20>
 - Daniele Behn Smith will be reaching out again to the Nuxalk once an appropriate grieving period has passed from the 3 (non-covid) community deaths in the area
- The modelling deck will be updated shortly so we can provide it to the Premier's Office for the 3pm call today.
 - That same deck will be used at Cabinet and the COVID Cabinet Cttee, so we can submit that today as well
 - New numbers won't be ready until Thursday (the epidemiological week ends Wed) – so the NDP caucus can either get a later, updated deck, or today's deck with old numbers and receive it in advance.
- Dr Reka Gustafson and the BCCDC have written the attached (still draft) response to the following blog post re schools: <https://doodles.mountainmath.ca/blog/2021/01/02/bc-back-to-covid-school/>
 - The blog post received some media attention in Jan: <https://bc.ctvnews.ca/b-c-s-modelling-numbers-don-t-paint-full-picture-of-covid-19-impacts-in-schools-data-crunchers-say-1.5253651?cache=yes%231.811590%3FclipId%3D89680>
- The Ministry of Education event is this Wednesday at 10am. Draft News Release is attached.
 - All K-12 staff will now be required to wear non-medical masks in all indoor areas, including when they are with their learning groups.
 - \$8.2 million in funding will go towards addressing learning loss and student health, technology for remote learning, education and mental health support, adapting classroom spaces, and enhanced cleaning
 - be \$900,000 allocated for six regional rapid response teams, one for each Health Authority and one dedicated to support independent schools, with representatives from both school and public health staff
- There are no new upcoming PHO orders re ski resorts though Dr Henry is meeting with the Industry Association today at 4pm
 - Lucinda is setting up a follow up meeting for tomorrow regarding Whistler

Message for today's statement: It will take some time to figure out how the variants will affect us. We need to keep up the fundamentals so we can appropriately respond to the variables.

NEWS RELEASE

For Immediate Release
February XX, 2021

Ministry of Education

Enhanced safety measures include updated mask rules for k-12 schools

VICTORIA – Enhanced safety measures and \$121.2 million in funding are on the way as the Province continues to strengthen health and safety plans in K-12 schools to keep students and staff safe during the pandemic.

All K-12 staff will now be required to wear non-medical masks in all indoor areas, including when they are with their learning groups. They are permitted to take off their masks when:

- sitting or standing at their seat or workstation in a classroom;
- there is a barrier in place; or
- when they are eating or drinking.

For elementary students, wearing masks indoors or on buses remain a personal choice. These updates are part of ongoing work of the provincial education steering committee and are in alignment with public health updates.

“To make sure schools remain as safe as possible for students and staff as the pandemic evolves, we have worked with our partners and public health on a continuous review of the guidelines, adapting and responding when needed,” said Minister of Education, Jennifer Whiteside. “I know that some students and staff continue to feel anxiety going to school and we want them to feel confident with the safety measures in place.” [NOT APPROVED]

Guidelines have also been strengthened for physical education and music classes. High-intensity physical activities are to be held outside as much as possible. Shared equipment or items such as weight machines, treadmills or musical instruments can be used only if they are cleaned between use, according to strict school sanitization guidelines. Students using equipment or playing instruments should also be spaced at least two metres apart, and masks are to be used when singing.

More than \$5.7 million has been provided by the Federal restart funding for districts to purchase 3.9 million masks for students and staff.

“We need to remember that masks do not prevent the spread of COVID-19 on their own – we still need layers of protection to ensure students and staff continue to follow the guidelines, including washing their hands diligently and not coming to school if they have even mild symptoms,” said Dr. Bonnie Henry, B.C. Provincial Health Officer.

To support B.C.’s COVID-19 response for K-12 education, the federal government announced \$242.4 million in one-time funding for the 2020-21 school year, with the first half of the

investment allocated in September. The second installment of this funding arrived on January 29, 2021. The Ministry of Education is allocating \$101.1 million to school districts and \$7.5 million to independent schools and providing school districts an additional \$3 million to manage covid-19 exposures in schools.

To support Indigenous learners, \$8.2 million in funding will go towards addressing learning loss and student health, technology for remote learning, education and mental health support, adapting classroom spaces, and enhanced cleaning.

There will also be \$900,000 allocated for six regional rapid response teams, one for each Health Authority and one dedicated to support independent schools, with representatives from both school and public health staff. These teams, announced in November 2020 by the B.C. Public Health Officer, will improve the speed of school exposure investigations so health authorities can inform school districts and families more quickly. [all numbers are draft - to be approved by TB]

Rapid response teams will conduct physical or virtual site inspections to ensure K-12 COVID health and safety guidelines are being followed consistently. If there has been a significant exposure event or an in-school transmission, rapid response teams will be deployed to conduct a review and make recommendations, if needed.

School principals and vice-principals at each school will also be provided with COVID health and safety checklists to ensure they are consistently following provincial guidelines, and families in their local communities are reminded of the personal measures they can take to help keep schools safe.

School districts and independent school authorities will be required to confirm that every school has completed the checklist and that safety plans have been updated to reflect these updated guidelines by February 28, 2021. All schools will also post updated plans publicly.

[BCSTA quote – TBC]

One of the most important factors to keeping schools safe is a daily screening for any COVID-19 symptoms, and that's why daily health checks continue to be required. To support daily screening, a new K-12 health-checker phone app has been developed and can be found at: XXXX. The app will allow families and staff to answer simple questions every day, and it will inform people if they can attend school, or if they need to self-isolate and contact 811 to be screened for COVID.

[BCCPAC quote – TBC]

Learn More:

[Link to updated guidelines](#)

Media Contacts:

Government Communications and Public Engagement
Ministry of Education
250-356-5963

BACKGROUND

Information about the updated guidelines and federal funding

Strengthened health and safety guidelines also include ensuring:

- There are no activities that include prolonged physical contact. For example, activities like tag or touch football are lower risk since students may only come into contact with each other briefly, whereas activities like wrestling or partner dancing should be avoided.
- Staff are assigned to one learning group whenever possible. Staff interacting with more than one learning group (or with students in more than one school) without a plexiglass barrier are to practice physical distancing s.13
- Staff are to practice physical distancing and wear non-medical masks for any face-to-face meetings or interactions, including in the staff room. Staff are also to hold meetings virtually whenever possible.
- Any s.13 visitor to a school is required to wear a non-medical mask.
- Even when wearing a mask, students and staff must still practice physical distancing whenever possible. Exceptions will be made for people who do not tolerate masks for behavioural or health reasons.

Within learning groups, physical distancing should also include avoiding physical contact, and minimizing close, prolonged, face-to-face interactions, while spreading out as much as possible within the space available. There should be no crowding, gathering or congregating of people, even if non-medical masks are worn.

Since the start of the school year non-medical masks have been required for middle and secondary students and K-12 staff in high traffic areas like school buses and hallways, and outside of classrooms or learning groups when they could not safely distance from others.

School districts and independent schools will be able to spend the second instalment of federal funding in the following areas, based on local needs:

- hiring and training education, custodial and administrative or support staff;
- improving air systems in schools;
- increasing hand hygiene, including additional handwashing and hand sanitizing stations
- cleaning equipment and supplies;
- mental health support;
- software and computer or tablet loans for students learning remotely;
- Purchasing additional non-medical masks or other personal protective equipment; and
- Additional transportation costs to accommodate additional routes.

An education steering committee with membership from all education partners – including teachers, school staff, parents, Indigenous rightsholders, trustees, and school leaders – has

been meeting regularly throughout the pandemic. In January 2021, the committee was expanded to include staff from the Office of the Provincial Health Officer, the BC Centre for Disease Control and WorkSafe BC. A provincial coordinator has also been appointed to continue to improve COVID processes and make sure COVID-related health and safety guidelines are implemented consistently throughout the education system.

Media Contacts:

Government Communications and Public Engagement
Ministry of Education
250 356-5963

Connect with the Province of B.C. at: www.gov.bc.ca/connect

February 1, 2021

To: PHSA Board Chair, Tim Manning

Re: Response to Blog: BC Back to (COVID) school by authored by Jens *and Hsingchi von Bergmann*.

The pandemic has piqued and renewed interest in public health data. Much of the data that is being presented by BCCDC and the health authorities is being examined with a keen eye. The public is asking for transparency, and timeliness in data sharing and communication. At all times we welcome constructive feedback or commentary related to the data products, as it helps us identify ways to improve the translation and communication of COVID-19/ SARS-COV-2 related data to the public.

COVID-19 information presented to the public is largely surveillance data. Surveillance data are obtained from information collected during clinical and public health management of people with COVID-19, and clusters and outbreaks of COVID-19. In other words, these data are primarily collected for purposes other than public reporting, and therefore, are not perfect. But surveillance data do not have to be perfect to be useful. Through the systematic collection, analysis and dissemination of surveillance data, we can infer important information to guide public health action.

British Columbia's approach to the prevention and control of COVID-19 in schools was informed by data from multiple local, national and international sources, and considered information on safety in schools, risks of illness, transmission and outcomes in children and young adults, as well as the harms associated with school closures. Guidelines are created based on information we have to date. As we monitor COVID-19 locally, nationally and internationally, our approach in schools may need to be adjusted.

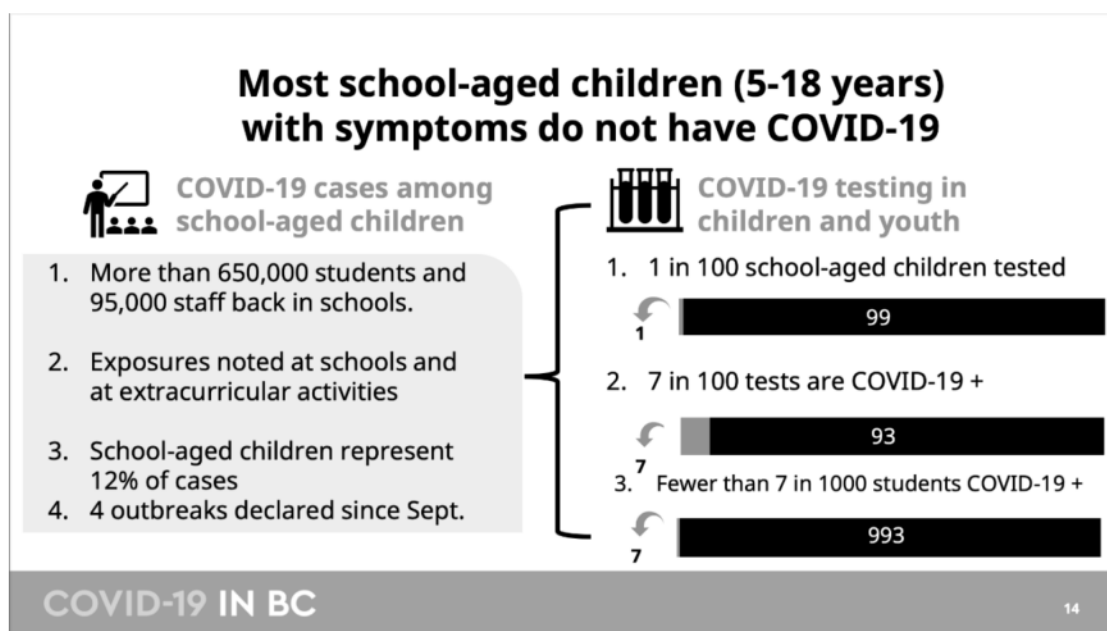
The PHO briefing on December 23, 2020 aimed to present information we gathered during the fall school term, when in-person instruction resumed in British Columbia. The author concluded that BCCDC is 'bent on minimizing in-school exposures and transmissions , going so far as producing slides that are misleading' is unfounded. In response to the blog, BCCDC reviewed these slides and found no data errors. We do however acknowledge the authors' perspective that it is possible to misinterpret the data given level of detail that the medium of a public briefing is able to provide.

We provide direct responses to the authors of the blog below. Going forward, presentations will be reviewed to ensure dates and details are added either directly to the slides, or to an appended document, to minimize the likelihood of misinterpretation. We also recognize that data are best interpreted and communicated by those closest to the work.

Please find below our responses to the bloggers' comments:

1. Point 1, Slide 14:

- Data is misleading and does a string of calculations aimed at minimizing the impact of COVID-19 on schools.
- Three numbers in bars on right hand side of slide don't add up numerically.



Response to Point 1, Slide 14:

We thank the authors for their comments. The intention of the slide was not to mislead, and we will work to ensure that data are more easily understood and the likelihood of misinterpretation is minimized. In particular for these data, the dates to which each bullet refers needed to be included.

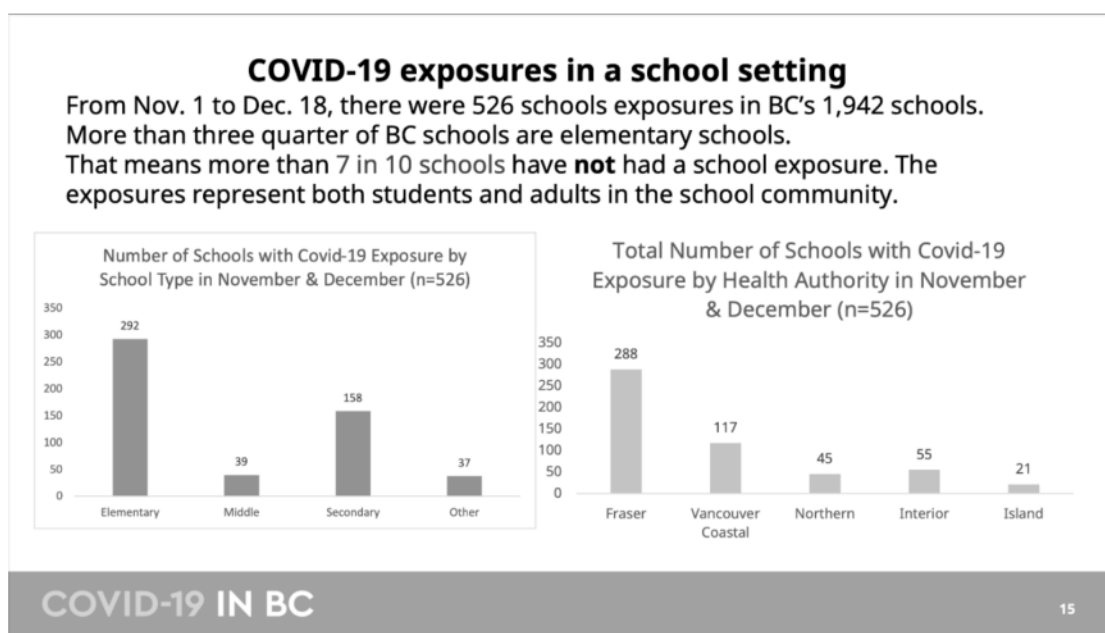
The bloggers' are correct that the three numbers on the right side of the slide do not add up numerically. Indeed, there is detail missing in this slide that makes the information confusing. The goal of the slide was to present an up-to-date assessment of the current situation. For this we looked at testing data in the two weeks preceding Dec 23. However, the third bullet represents an overall rate for the period of September-December, and this is detail that should have been in the slide. The slide refers to the following data:

- **1 in 100 school-aged children tested.** The weekly testing rate for epidemiologic weeks 50 and 51 was roughly 1 test per 100 individuals aged 5-18 years. The language is not clear of the time period represented, and this will be updated. It will read: in the two weeks prior to December 23rd, 1 in 100 school-aged children were tested every week.

- **7 in 100 tests are COVID-19 +.** This statement was also meant to reflect the recent activity (epi weeks 50 and 51). Data from the beginning of schools in Sept would reflect a much smaller percent positivity, since the number of tests was higher and the number of positive results was lower when schools first opened.
- **Fewer than 7 in 1000 students are COVID-19 +:** this refers to the entire term, which should have been made clear.

2. Point 2, SLIDE 15:

- The biggest issue with the slide is that what matters is the number of exposures, not the number of schools. BC COVID School Tracker volunteer project lists 1,392 exposure notifications in this time frame



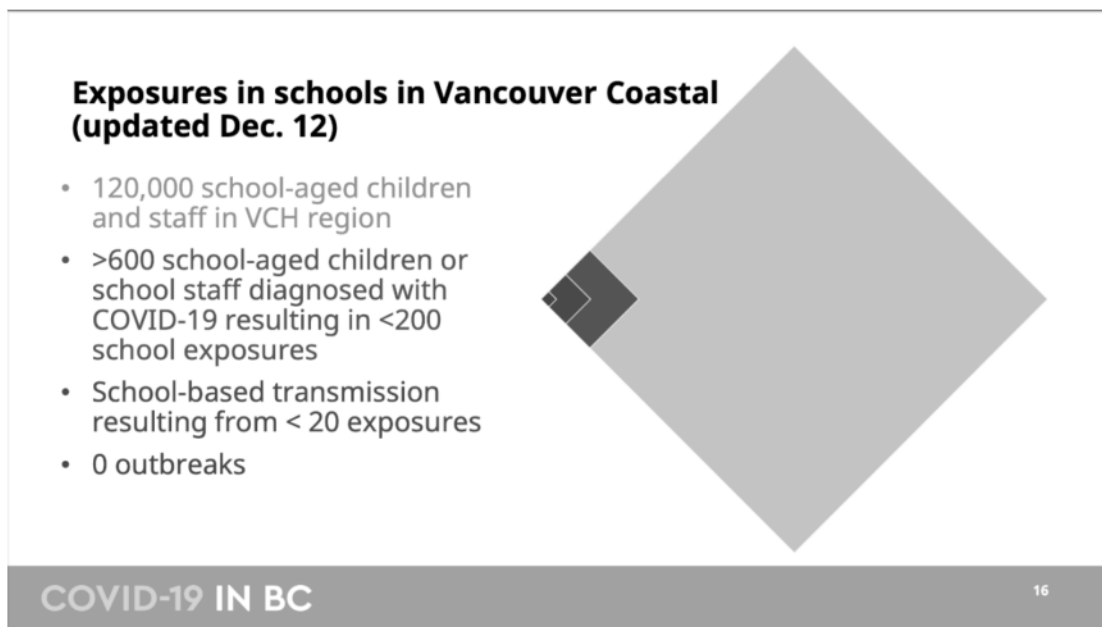
Response to Point 2, SLIDE 15:

While we agree that the overall number of exposures and the number of schools where exposures have occurred provide different information, we do not agree that the former provides more valuable information. The number of school exposure notifications reflect the number of students or staff who had COVID-19, who were in the school at some time during their infectious period. It does not imply that these infections were acquired in the school nor that there was any further transmission in the school. Indeed, for the vast majority of these notifications neither is the case; the infection is not acquired in the school and further transmission does not occur in the school.

Thus, the overall number of notifications is not a good reflection of risk in the school; it is a good reflection of COVID-19 transmission in the community. The number of schools where an exposure has and has not occurred reflects the localized nature of COVID-19 in our province. COVID-19 transmission varies community by community, and there are many schools that will not have had a COVID-19 case during the fall term.

3. Point 3, SLIDE 16:

- Discrepancy in number of COVID-19 cases among school aged children and staff (n>600) and number of school exposures (n<200)
- Number of exposures seems small



Response to Point 3, SLIDE 16:

The number of COVID-19 cases among school children and staff is the number of individuals diagnosed with COVID-19 who are either school-aged or are staff at a school. Being diagnosed with COVID-19 does not mean that a school exposure occurred. If the individual had another source of their infection and did not attend school during their infectious period, a “school exposure” did not occur. Indeed, as is indicated in this slide, more often than not, the case is neither acquired in the school nor attended school during their infectious period.

4. Point 4, SLIDE 17:

- Concern over interpretation of ‘No school transmission in >90% of cases’. Author believes this to be among cases where cases are linked to a known case or cluster, and

suggests it is unknown how the remaining 11% of cases not linked to cluster/case can have transmission in school ruled out in interpretation

- Data from VCH don't appear to match scraped data that author has taken from transmission events from the province.

COVID-19 in schools in Vancouver Coastal

- 89% of cases acquired infection from confirmed case/cluster, generally from a household contact
- Of cases in schools, 76% students, 24% staff
- No school transmission in >90% of cases
- Recently, most transmission involved a staff member

COVID-19 IN BC

17

Response to Point 4, SLIDE 17:

This slide presents information that is obtained by the detailed follow-up of cases done at the local level. The >90% number represents the percentage of cases among school aged children or staff who become the source of infection for another person in the school setting. This information is valuable because this level of detail is often not available at the provincial or national level. The provincial data that the blogger presents is a summary of the situations where two or more cases shared a common home, school, workplace etc.

The provincial data do not have the additional detail from local investigation that can rule in or out a probable transmission in the school setting. The value of providing more detailed information is to better understand the risk. The conclusion of the blogger, that the majority of students and staff who are diagnosed with COVID-19 did not acquire it in the school setting is consistent with what we are observing in BC.

5. Point 5, SLIDE 18:

- Data represent schools exposed, not total exposures
- The number of schools reported with exposures for Surrey, exceeds the number of schools in Surrey.

COVID-19 in schools in Fraser Health

- Exposure events have occurred in 384 schools, among which 133 (34.6%) were in Surrey school district (including both public and independent schools).
- Out of these 384 schools, 49 (12.8%) had potential in-school transmission events.
- Among the 49 schools, 23 (46.9%) schools were in Surrey school district .
- Among these 23 schools, 11 (47.8%) were secondary schools or include secondary school grades in the school.

COVID-19 IN BC

18

Response to Point 5, SLIDE 18:

We agree that the data are the number of schools exposed. There are ^{s.13} public and independent schools in Surrey. Therefore, the 133 schools in Surrey with an exposure represent ^{s.1} % of all schools in the region.

This information is consistent with what we are seeing generally, that the number of schools with exposures is a reflection of what is occurring in the community. COVID-19 activity in Surrey was higher than in other part of the province. As expected, a higher number of schools had individuals with COVID-19, since the likelihood of acquiring COVID-19 for residents of Surrey was higher than elsewhere in the province.

We would like to thank you for your interest in the information we share, and we will continue to endeavor to improve data quality, timeliness and knowledge translation.

Sincerely,

Dr. Réka Gustafson MD FRCPC
Vice President, Public Health and Wellness, PHSA & Deputy Provincial Health Officer

RE: Morning Call with Bonnie

From: van Baarsen, Amanda HLTH:EX <Amanda.vanBaarsen@gov.bc.ca>
To: Dix, Adrian HLTH:EX <Adrian.Dix@gov.bc.ca>
Cc: MacDonald, Alex HLTH:EX <Alex.MacDonald@gov.bc.ca>, Yeung, Lucinda HLTH:EX <Lucinda.Yeung@gov.bc.ca>, Szabo, Maria HLTH:EX <Maria.Szabo@gov.bc.ca>, Pham, Thuy HLTH:EX <Thuy.Pham@gov.bc.ca>
Sent: February 2, 2021 9:39:44 AM PST
Apologies – Education is going out Thursday at 10am

From: van Baarsen, Amanda HLTH:EX
Sent: February 2, 2021 9:12 AM
To: Dix, Adrian HLTH:EX <Adrian.Dix@gov.bc.ca>
Cc: MacDonald, Alex HLTH:EX <Alex.MacDonald@gov.bc.ca>; Yeung, Lucinda HLTH:EX <Lucinda.Yeung@gov.bc.ca>; Szabo, Maria HLTH:EX <Maria.Szabo@gov.bc.ca>; Pham, Thuy HLTH:EX <Thuy.Pham@gov.bc.ca>
Subject: Morning Call with Bonnie

- Andre Picard's article yesterday speaks to where we're at: <https://www.theglobeandmail.com/opinion/article-things-are-looking-up-in-our-pandemic-fight-so-keep-locking-down>
- Angela Sterritt's article is published and she has done some morning media: https://www.cbc.ca/news/canada/british-columbia/medical-health-officer-vaccine-indigenous-community-1.5890828?_vfx=medium%3Dsharebar
 - References the audio of the voicemail here: <https://twitter.com/AngelaSterritt/status/1356625989632020481?s=20>
 - Questions whether he is still employed here: <https://twitter.com/AngelaSterritt/status/1356614160222724096?s=20>
 - Daniele Behn Smith will be reaching out again to the Nuxalk once an appropriate grieving period has passed from the 3 (non-covid) community deaths in the area
- The modelling deck will be updated shortly so we can provide it to the Premier's Office for the 3pm call today.
 - That same deck will be used at Cabinet and the COVID Cabinet Cttee, so we can submit that today as well
 - New numbers won't be ready until Thursday (the epidemiological week ends Wed) – so the NDP caucus can either get a later, updated deck, or today's deck with old numbers and receive it in advance.
- Dr Reka Gustafson and the BCCDC have written the attached (still draft) response to the following blog post re schools: <https://doodles.mountainmath.ca/blog/2021/01/02/bc-back-to-covid-school/>
 - The blog post received some media attention in Jan: <https://bc.ctvnews.ca/b-c-s-modelling-numbers-don-t-paint-full-picture-of-covid-19-impacts-in-schools-data-crunchers-say-1.5253651?cache=yes%231.811590%3FclipId%3D89680>
- The Ministry of Education event is this Wednesday at 10am. Draft News Release is attached.
 - All K-12 staff will now be required to wear non-medical masks in all indoor areas, including when they are with their learning groups.
 - \$8.2 million in funding will go towards addressing learning loss and student health, technology for remote learning, education and mental health support, adapting classroom spaces, and enhanced cleaning
 - be \$900,000 allocated for six regional rapid response teams, one for each Health Authority and one dedicated to support independent schools, with representatives from both school and public health staff
- There are no new upcoming PHO orders re ski resorts though Dr Henry is meeting with the Industry Association today at 4pm
 - Lucinda is setting up a follow up meeting for tomorrow regarding Whistler

Message for today's statement: It will take some time to figure out how the variants will affect us. We need to keep up the fundamentals so we can appropriately respond to the variables.

Fwd: ski communities action plan

From: Yeung, Lucinda HLTH:EX <Lucinda.Yeung@gov.bc.ca>
To: Dix, Adrian HLTH:EX <Adrian.Dix@gov.bc.ca>
Cc: van Baarsen, Amanda HLTH:EX <Amanda.vanBaarsen@gov.bc.ca>, MacDonald, Alex HLTH:EX <Alex.MacDonald@gov.bc.ca>
Sent: February 5, 2021 9:04:09 AM PST
Attachments: Briefing Note on Reducing covid 19 transmission in ski communities .docx, ATT00001.htm

Sent from my iPhone

Begin forwarded message:

From: "Yeung, Lucinda HLTH:EX" <Lucinda.Yeung@gov.bc.ca>
Date: February 4, 2021 at 5:28:57 PM PST
To: "Dix, Adrian HLTH:EX" <Adrian.Dix@gov.bc.ca>, "Henry, Bonnie HLTH:EX" <Bonnie.Henry@gov.bc.ca>
Cc: "MacDonald, Alex HLTH:EX" <Alex.MacDonald@gov.bc.ca>, "van Baarsen, Amanda HLTH:EX" <Amanda.vanBaarsen@gov.bc.ca>
Subject: FW: ski communities action plan

Hi Minister, Bonnie –

From Tourism, the action plan for ski communities – see appendix 1, includes a province-wide paid media campaign and community working groups with municipalities, chamber of commerce, HAs, etc.

Minister Osbourne suggested if –following your call with Whistler—she can reach out with a call to relay the same to Mayor of Fernie (Ange Qualizza) and Sun Peaks (Al Raine), either with you or on her own.

- The draft Action Plan includes a combination of a province-wide media campaign to reiterate ski and health protocols to support education and information sharing, including working with WorkSafeBC, and a community-based approach in key resort communities that uses ski areas as a conduit into the communities that surround the ski area.
- Specifically, for the community component, the plan will focus on six ski areas where there is an existing community, municipality structure in place: Fernie; Invermere; Revelstoke; Rossland; Sun Peak; and, Whistler.
- For each of the six communities a working group will be established consisting of: Ski Operators; Municipalities; Community Destination Marketing Organizations; local Chambers of Commerce and the local Health Authority. In some communities, relationships between these organizations already exist. The plan is to more clearly mobilize/coordinate into a working group to guide specific tactics and actions.

Lucinda

From: Spilker, Robyn MUNI:EX <Robyn.Spilker@gov.bc.ca>
Sent: February 4, 2021 5:20 PM
To: Yeung, Lucinda HLTH:EX <Lucinda.Yeung@gov.bc.ca>
Cc: Farrance, Melissa TACS:EX <Melissa.Farrance@gov.bc.ca>
Subject: FW: Briefing Note on Reducing covid 19 transmission in ski communities .docx

Adding Lucinda.

From what Melissa told me, sounds like the advertising component is already underway in Fernie, and getting underway in the other locations.

From: Farrance, Melissa TACS:EX <Melissa.Farrance@gov.bc.ca>

Sent: February 4, 2021 5:06 PM

To: Spilker, Robyn MUNI:EX <Robyn.Spilker@gov.bc.ca>

Subject: Briefing Note on Reducing covid 19 transmission in ski communities .docx

Sent from my iPhone



Cabinet Committee on COVID-19

Date: January 30, 2021

Cliff #: 41516

Issue: Reducing COVID-19 transmission in ski communities

Background / Facts:

- Ski resorts in B.C. play a vital role to the economic recovery of the province by generating revenue and employment throughout the winter months. They also play an important role in enhancing the lives of local residents by providing access to safe outdoor activities to relieve stress and remain active throughout the pandemic.
- The ski industry in BC is represented by the Canada West Ski Areas Association (CWSAA), a not-for-profit trade association that represents the Ski Areas of Western Canada including British Columbia. Christopher Nicolson is the President & CEO of CWSAA and works on behalf of the ski sector.
- There are 37 ski areas throughout British Columbia. Most ski areas are community based and primarily serve rural communities. There are 13 ski areas considered destination ski areas and many of these are the primary employers and key economic driver within their region.
- The BC Ski Industry in B.C. is a significant contributor to the provincial economy through \$2.0 Billion in expenditures annually and 21,185 jobs. The Industry creates \$882 Million in wages and contributes \$328 Million in taxes.
- To support safe operations for the 2020/21 season, the BC Ski Industry led by CWSAA, in partnership with provincial health authorities and WorkSafeBC developed a COVID-19 safety protocol manual for ski areas– ‘Ski Areas Winter Operations National COVID Guidance’.
- CWSAA also partnered with the Canadian Ski Council to develop ‘Ski Well, Be Well’, a website for operational best practices and consumer messaging.

Analysis:

- Despite the health and safety protocols put in place by ski hill operators, there have been several COVID-19 outbreaks affecting ski communities in the past months including Whistler, Revelstoke, Fernie and Big White.
- Ski operators have reported that the outbreaks are primarily outside of the workplace (e.g. employee or guest social gatherings) or within the broader ski-eco-system which includes not only the operators but local ski hill restaurants, businesses, staff and/or private accommodation.
- As a result of these outbreaks and the current provincial health orders restricting travel, ski resorts immediately increased their online messaging to discourage non-local travel and Big White has cancelled all non-local bookings up to February 5th.
- Over the last several weeks, Minister Melanie Mark and ministry staff have worked with the CWSAA to better understand the issue and identify mitigation strategies to reduce transmission within ski communities to enable ski hills to remain open for the rest of the winter season (end of March 2021).
- As a result, CWSAA in partnership with ski operators has developed a draft Action Plan focusing on three key strategies: education; enforcement; and preparation.
- The draft Action Plan includes a combination of a province-wide media campaign to reiterate ski and health protocols to support education and information sharing, including working with



WorkSafeBC, and a community-based approach in key resort communities that uses ski areas as a conduit into the communities that surround the ski area.

- Specifically, for the community component, the plan will focus on six ski areas where there is an existing community, municipality structure in place: Fernie; Invermere; Revelstoke; Rossland; Sun Peak; and, Whistler.
- For each of the six communities a working group will be established consisting of: Ski Operators; Municipalities; Community Destination Marketing Organizations; local Chambers of Commerce and the local Health Authority. In some communities, relationships between these organizations already exist. The plan is to more clearly mobilize/coordinate into a working group to guide specific tactics and actions.
- Key actions and tactics will target social gatherings, short-term rentals and shared accommodation. A copy of the draft Action Plan with specific tactics and lead organizations is attached as Appendix 1.

Conclusion / Next Steps (if any):

- Ministry of Tourism, Arts, Culture and Sport (TACS) will continue to actively work with the BC Ski Industry to help support reduced transmission and continued operations to end of March 2021.
- TACS to work with CWSAA to finalize the *Reducing Transmission in Ski Communities Action Plan* in the week of February 1, 2021. Action Plan to be shared with Ministry of Health and WorkSafeBC.
- Province-wide media campaign to begin week of February 1, 2021. TACS to work with government communications and CWSAA to ensure coordination.

Attachment(s): Draft Action Plan for Reducing Transmission in Ski Communities

Contact: Salman Azam, ADM
Tourism Sector Strategy Division
Tel: 250-361-5440

Appendix 1

Reducing Transmission in Ski Communities Action Plan – January 29, 2021

Ski Communities of interest: Fernie, Invermere, Revelstoke, Rossland, Sun Peaks, Whistler

Key Initiatives

1. Consumer province-wide paid media campaign on health protocols in ski communities.
2. All stakeholder Employee campaign to “Be the Reason We All Have a Season”
3. Mobilise community on enforcement, education, preparation

	Action	Lead
Communications and Asset Development	Province-wide paid media campaign re ski and health protocols <i>Message: Follow the rules, no social gatherings and ski local.</i> <i>Medium: TV, digital platforms</i>	Ski
	Develop and distribute health order new employee-friendly assets & messaging through partners to all community employee groups. • Partner with WorkSafeBC	Ski
	Continue safety protocol education and information to ski area stakeholders. Employee, passholders, stakeholders.	Ski
Mobilise Community	Ski areas engage community agencies	Ski
	Coordinate tactics through community working group including: Municipality, CDMO, Chamber, Health Authority.	All
Key Result Areas and Tactics		
Social Gatherings	Proactive enforcement of bylaws & health orders. Police engagement. Employers to distribute health order information to employees	Muni / Health CDMO Chamber Ski
	Consumer Media campaign Employers support health authority with contact tracing	Ski / Health
Short Term Rental	Letter to short term accom owners re health orders and enforcement Hotel and rental managers not booking mixed households. Health order agreement with reservations Airbnb, VRBO re no mixed households. Criteria on website registration.	Muni CDMO Ski / DBC
Shared Accommodation	Identify isolation accommodation in community. BC Housing has an inventory in Whistler but not the other communities. Employers to distribute health information eg: what to do when feeling ill	Health CDMO Chamber
	Identify gaps and define understanding of terms like Isolation, quarantine, high risk close contact	Health
	Increase testing to isolate positive cases immediately Employers support local health authority with contact tracing	Health Ski



Ministry of
Tourism, Arts,
Culture and Sport

Community Agencies

Fernie

Resorts of the Canadian Rockies, Andy Cohen, GM
City of Fernie
Tourism Fernie
Fernie Chamber of Commerce

Rossland

Red Mountain, Don Thompson, GM
City of Rossland
Tourism Rossland
Trail and District Chamber of Commerce

Invermere

Panorama Mountain Resort, Steve Paccagnan, GM
District of Invermere
Invermere by the Lake (Tourism)
Columbia Valley Chamber of Commerce

Revelstoke

Revelstoke Mountain Resort, Dave Brownlie President / Peter Neilsen, GM
City of Revelstoke
Revelstoke Accommodation Association
Revelstoke Chamber of Commerce

Sun Peaks

Sun Peaks Resort, Darcy Alexander, GM
Sun Peaks Mountain Resort Municipality
Tourism Sun Peaks

Whistler

Whistler Blackcomb, Geoff Buchheister GM / Sarah McCullough Director
Resort Municipality of Whistler
Tourism Whistler
Whistler Chamber of Commerce

Fwd: FYI: NR ski safety

From: van Baarsen, Amanda HLTH:EX <Amanda.vanBaarsen@gov.bc.ca>
To: Dix, Adrian HLTH:EX <Adrian.Dix@gov.bc.ca>
Cc: MacDonald, Alex HLTH:EX <Alex.MacDonald@gov.bc.ca>, Yeung, Lucinda HLTH:EX <Lucinda.Yeung@gov.bc.ca>
Sent: February 11, 2021 4:50:46 PM PST
Attachments: NR_COVD19_Ski Safety_5Feb2021_ALMACH_CWSAA_SANM RS3 (002)MF (003) clean.docx

Confirming your consent for this proposal

Sent from my iPhone

Begin forwarded message:

From: "Youngs, Kirsten R GCPE:EX" <Kirsten.Youngs@gov.bc.ca>
Date: February 11, 2021 at 4:46:44 PM PST
To: "van Baarsen, Amanda HLTH:EX" <Amanda.vanBaarsen@gov.bc.ca>
Subject: FYI: NR ski safety

Hi Amanda,
As discussed, s.22 is very eager s.22 to speak to someone about Whistler and what the Province is doing to reduce transmission and contain exposure in the community.
VCH has deferred her to us.
TAC is putting this NR out tomorrow morning.
I propose that I let her know that an update is coming tomorrow and if she has any questions after that, she can connect with me again. Thoughts?

NEWS RELEASE

For Immediate Release
[release number]
[Date]

Ministry of Tourism, Arts, Culture and Sport

Be the reason we all have a ski season

VICTORIA – The ministries of Tourism, Arts, Culture and Sport, Health, and Municipal Affairs in conjunction with WorkSafeBC, six local governments and Canada West Ski Area Association (CWSAA) have launched an education campaign to reduce COVID-19 transmission in ski communities.

In response to increasing virus transmission in shared accommodation and socializing in ski communities, government and industry have developed a campaign which focusses on educating employees and skiers on COVID-19 health and safety protocols.

"I want to personally thanks the ski industry and communities who have been working non-stop to save this ski season and I know most people are doing the right thing to avoid spreading COVID-19," said Melanie Mark, Minister of Tourism, Arts, Culture and Sport. "However, those who are s.13 throwing parties and ignoring the rules are putting jobs, our economy and our health at risk.s.13

s.13 Now is the time for each of us to step up and do our part so we can continue to enjoy all that ski communities have to offer."

s.13

"Local governments are leaders in their communities, and they have played a critical role in helping people stay safe and healthy during the pandemic," said Josie Osborne, Minister of Municipal Affairs. "By continuing to work together, we can help people understand why they need to follow protocols, guidelines and maintain social distancing to ensure local ski operators and other local businesses can remain open and support these local economies."

Whistler, Sun Peaks, Rossland, Revelstoke, Invermere and Fernie have working groups focused on COVID-19 transmission which include ski operators, municipalities, Community Destination Marketing Organizations, Chambers of Commerce and local health authorities.

s.13

"We're calling on everyone to be the reason we save our season," said Jack Crompton, mayor of Whistler. "Whistler doesn't have an economy if we do not overcome COVID-19 transmission within our community. That's why it is so important each of us be conscious about not participating in situations where COVID-19 spreads. Take a COVID-19 check on après with friends. Let's stick to our households, and socialize virtually."

Actions undertaken by the CWSAA during the pandemic include the development of a COVID-19 safety protocol document and a partnership with the Canadian Ski Council to develop 'Ski Well, Be Well', a website for operational best practices and customer education.

"Ski areas are part of the fabric of many communities, especially in rural B.C.," said Chris Nicolson, President & CEO of the Canada West Ski Areas Association. "This initiative puts into practice guidance from the Provincial Health Office to build on the collaboration that exists between governments and community stakeholders to help prevent transmission in communities, and helps maintain safe vital outdoor activity in communities important for physical and mental wellness."

Ski resorts in B.C. play a vital role in the economic recovery of the province by generating revenue and employment throughout the winter months and in some cases like Whistler, year round local Tourism economies. They also play an important role in enhancing the lives of local residents by providing access to safe outdoor activities to relieve stress and remain active throughout the pandemic.

Quick Facts:

- There are 37 ski areas throughout British Columbia, most of which are community based and primarily serve rural communities.
- There are 13 ski areas considered destination ski areas and many of these are the primary employers and key economic driver within their region.
- The ski industry in B.C. is a significant contributor to the provincial economy through \$2 billion in expenditures annually and over 21,000 jobs.

Learn More:

Information about the CWSAA 'Be the Reason We All Have a Season' campaign: [SkiBCStrong.ca](https://skiBCstrong.ca)

Further details are available here: <https://cwsaa.org/wp-content/uploads/2021/02/Ski-Community-Collaboration-Website.pdf>

Online information for 'Ski Well, Be Well': [SkiWellBeWell.ca](https://skiwellbewell.ca)

Media contact(s):

Ministry of Tourism, Arts, Culture and Sport
Government Communications and Public Engagement
250 208-4309

Christopher Nicolson
President & CEO
Canada West Ski Areas Association
778 484-5535