

**From:** [HLTH MOC Duty Officer HLTH:EX](#)  
**To:** [Twyford, Philip HLTH:EX](#); [Craig, Kevin HLTH:EX](#); [Galt, Jamie HLTH:EX](#); [Pokorny, Peter HLTH:EX](#); [Edwards, Joanne HLTH:EX](#); [Henry, Bonnie HLTH:EX](#); [Emerson, Brian P HLTH:EX](#); [Lavoie, Martin HLTH:EX](#); [Butler, Janice HLTH:EX](#); [Anderson, Kristy HLTH:EX](#); [Fisher, Kiersten D HLTH:EX](#); [Maxson, Sandra HLTH:EX](#); [hlth Emergency Preparedness Staff](#); [Heinze, Laura R HLTH:EX](#); [Parte, Maura HLTH:EX](#); [HLTH Health Issues HLTH:EX](#); [Guerrero, Thomas HLTH:EX](#); [Ferrier, Jeffrey GCPE:EX](#); [Baade, Leah J HLTH:EX](#); [Sterloff, Trish HLTH:EX](#); [Russo, Geneen HLTH:EX](#); [Fishwick, David HLTH:EX](#); [van der Leer, Gerrit HLTH:EX](#)  
**Subject:** Initial Report: Abbotsford Evacuation Order  
**Date:** November 16, 2021 7:07:58 AM

---

The City of Abbotsford has issued an Evacuation Order for an area formerly under Alert in East Abbotsford (Sumas Prairie).

- The dike system has begun to overflow.
- The Order will affect a few thousand people, however the exact number is unknown at this time.
- Due to the closure of Highway 1 between Hwy 11 and No. 3 Rd, evacuees will likely have to evacuate towards Chilliwack.
- Chilliwack and Central Fraser Valley Search and Rescue have been activated to assist with evacuations.

Further details are not known at this time. The duty officer will continue to monitor the situation and provide updates as they become available.

Jonathan carroll

Provincial Health Duty Officer

**24/7 Duty Officer at 250-686-6061 or [hlth.dutyofficer@gov.bc.ca](mailto:hlth.dutyofficer@gov.bc.ca)**

**From:** [HLTH MOC Duty Officer HLTH:EX](#)  
**To:** [Twyford, Philip HLTH:EX](#); [Craig, Kevin HLTH:EX](#); [Galt, Jamie HLTH:EX](#); [Pokorny, Peter HLTH:EX](#); [Edwards, Joanne HLTH:EX](#); [Henry, Bonnie HLTH:EX](#); [Emerson, Brian P HLTH:EX](#); [Lavoie, Martin HLTH:EX](#); [Butler, Janice HLTH:EX](#); [Anderson, Kristy HLTH:EX](#); [Fisher, Kiersten D HLTH:EX](#); [Maxson, Sandra HLTH:EX](#); [hlth Emergency Preparedness Staff](#); [Heinze, Laura R HLTH:EX](#); [Parte, Maura HLTH:EX](#); [HLTH Health Issues HLTH:EX](#); [Guerrero, Thomas HLTH:EX](#); [Ferrier, Jeffrey GCPE:EX](#); [Baade, Leah J HLTH:EX](#); [Sterloff, Trish HLTH:EX](#); [Russo, Geneen HLTH:EX](#); [Fishwick, David HLTH:EX](#); [van der Leer, Gerrit HLTH:EX](#)  
**Cc:** [Blessin, Scott \[PHSA\]](#); [XT:Lavery, John HLTH:IN](#); ["Gerry Delorme"](#); [Grist, Christine EHS:EX](#); [Hogya, Brooks EHS:EX](#); [McKinnon, Scott EHS:EX](#)  
**Subject:** Initial Update: Abbotsford Pump Station Failure  
**Date:** November 16, 2021 8:18:54 PM

---

Good evening,

We have received an initial report that a pump station that was previously pumping water out of the Sumas Prairie area has failed.

If the pump cannot be brought back online rapidly, it is expected to result in a massive influx of water to the area.

At this time, it is not anticipated that evacuee numbers will change significantly, as the at-risk areas are thought to be largely already under evacuation order.

The duty officer will continue to monitor the situation, and provide updates as they become available.

Jonathan carroll

Provincial Health Duty Officer

**24/7 Duty Officer at 250-686-6061 or [hlth.dutyofficer@gov.bc.ca](mailto:hlth.dutyofficer@gov.bc.ca)**

**From:** Galt, Jamie HLTH:EX  
**To:** "Amy Romanas"; Brach, Pader W EMBC:EX; Brown, Stephen R HLTH:EX; Butler, Janice HLTH:EX; XT:Murray, Caeli GCPE:IN; Canete, Jerome HLBC:EX; "Danika Lawson"; "Dave Hutton"; XT:byres, david HLTH:IN; "Delorme, Gerry [HEMBC]"; XT:Wilson, Donna HLTH:IN; EHS ECC, Director EHS:EX; EHS ECC, Planning EHS:EX; EMBC PECC Director 1 EMBC:EX; EMBC PECC Operations 1 EMBC:EX; EMBC PECC Planning 1 EMBC:EX; Ferrier, Jeffrey GCPE:EX; Fisher, Kiersten D HLTH:EX; Guerrero, Thomas HLTH:EX; Hayward, Ross HLTH:EX; "HEMBC LM"; Henry, Bonnie HLTH:EX; Heppell, Leanne EHS:EX; hlth Emergency Preparedness Staff; HLTH Health Issues HLTH:EX; HLTH MOC Duty Officer HLTH:EX; Holoiday, Leah GCPE:EX; Hryciuk, Lorie HLTH:EX; "Jodie Millward"; XT:Lavery, John HLTH:IN; Klotz, Peter HLTH:EX; "Kuhn, Ryan"; XT:Dawkins, Laurie GCPE:IN; Lavoie, Martin HLTH:EX; XT:Flatt, Alexandra HLTH:IN; "Maj Travis Field (JTFF)"; "Margartha Lundh"; "Mary Charters"; Massey, Keren L HLTH:EX; Miller, Haley HLTH:EX; Moulton, Holly HLTH:EX; XT:Gole, Pamela PHSA:IN; Patterson, Catherine M HLTH:EX; "Phillips, Mark [RHI]"; "PHSA HEMBC"; Pokorny, Peter HLTH:EX; Rongve, Ian HLTH:EX; "Scott Macnair"; "SLT Alicia Puritt (JTFF)"; Strachan, Brande L HLBC:EX; XT:Wannemaker, Susan EHS:IN; Therrien, Darlene HLTH:EX; Turner, Jordan GCPE:EX; Twyford, Philip HLTH:EX; van der Leer, Gerrit HLTH:EX; "Victoria Heron"; "VIHA HEMBC"; Williams, Susan GCPE:EX; Youngs, Kirsten R GCPE:EX; Sterloff, Trish HLTH:EX; Russo, Geneen HLTH:EX; Fishwick, David HLTH:EX; Craig, Kevin HLTH:EX; Hayward, Ross HLTH:EX; Anderson, Kristy HLTH:EX; Pengelly, Letitia M EHS:EX  
**Subject:** BC Health System Atmospheric River Situation Report: 15 November 2021  
**Date:** November 15, 2021 11:39:47 PM  
**Attachments:** HECC SITREP 01 NovAtmosphericRiver2021 20211115.pdf

---

Good Evening,

Please find attached the initial Health System Atmospheric River Situation Report for today, 15 November 2021. Note, this is an abridged situation report and does not include full details as aggregated from Health Sector partners. Please refer to the previous email updates sent today that contained more detailed information or reach out to the Provincial Health Duty Officer or undersigned for more information if you did not receive those updates. Email updates on the developing situation are likely tomorrow, 16 November 2021.

The Ministry of Health will deploy a liaison officer in-person to the EMBC Provincial Operations Coordination Centre for 16 November 2021. That individual can be reached at 250-686-6061 or [hlth.dutyofficer@gov.bc.ca](mailto:hlth.dutyofficer@gov.bc.ca)

Any questions can be directed to myself.

Thank you,

Jamie

**Jamie Galt**, CD, MA

Director

Emergency Management Unit

Ministry of Health

Office: (778) 698-5823

Cell: [s.17](tel:2506866061)

PO Box 9639 Stn Prov Govt, Victoria BC V8W 9P1

**If this is an emergency impacting the provincial health system, please contact our 24/7 Duty Officer at 250-686-6061 or [hlth.dutyofficer@gov.bc.ca](mailto:hlth.dutyofficer@gov.bc.ca)**

*Warning: This email is intended only for the use of the individual or organization to whom it is addressed. It may contain information that is privileged or confidential. Any distribution, disclosure, copying, or other use by anyone else is strictly prohibited. If you have received this in error, please telephone or e-mail the sender immediately and delete the message.*

*I respectfully acknowledge the unceded territories of the Songhees, Esquimalt and WSÁNEC peoples'.*

## OVERVIEW

### PURPOSE:

- The provincial health system is currently experiencing significant impacts from an Atmospheric River weather event
- To ensure situational awareness across the provincial health system response structure, event updates have been provided throughout the day. This situation report summarizes key impacts and risks

**DATE ISSUED:** Monday, November 15, 2021

**PREPARED BY:** MoH EMU

**REPORTING PERIOD:** Information current as of 2100hrs on Monday 15 Nov 2021

**NEXT REPORT:** To be determined

**HECC ACTIVATION LEVEL:** 1

### NOTE:

Given the dynamic nature of the provincial weather situation, the following information is subject to change after this report is distributed. Any significant developments will be communicated sooner as necessary.

### SITUATION REPORT SECTIONS:

HIGHLIGHTS	SUPPORTING INFORMATION
<ul style="list-style-type: none"><li>• PROVINCIAL SITUATION SUMMARY:</li><li>• SIGNIFICANT HEALTH SYSTEM IMPACTS</li><li>• HEALTH SYSTEM RISKS</li></ul>	<ul style="list-style-type: none"><li>• HEALTH AUTHORITY SUMMARIES</li><li>• EXTERNAL AGENCY SUPPORTING MATERIAL</li></ul>

### PROVINCIAL HEALTH SYSTEM CONTACTS:

- Emergency inquiries impacting the BC Provincial Health System can be directed to the 24/7 Provincial Health Duty Officer (PHDO):
  - [Hlth.dutyofficer@gov.bc.ca](mailto:Hlth.dutyofficer@gov.bc.ca)  
250-686-6061
- The following individuals are providing provincial level coordination:
  - John Lavery, Executive Director Health Emergency Management BC (HEMBC)  
[John.lavery@phsa.ca](mailto:John.lavery@phsa.ca)
  - Gerry Delorme, Director Provincial Clinical Operations, HEMBC  
[gerry.delorme@viha.ca](mailto:gerry.delorme@viha.ca)
  - s.17 Jamie Galt, Director Emergency Management Unit  
[Jamie.galt@gov.bc.ca](mailto:Jamie.galt@gov.bc.ca)  
s.17



## PROVINCIAL SITUATION

### PROVINCIAL SITUATION SUMMARY:

- An extreme atmospheric weather event continues to impact the province in the form of significant precipitation and warming resulting in landslides, mudslides, flooding, and power outages
- **The situation remains dynamic and has not currently stabilized even with a general improvement in weather throughout the day**
- Several communities are under evacuation orders and alerts including the Town of Merritt (See *EMBC Regional SITREPs for details on community level orders and alerts*)
- Transportation corridors have been significantly impacted with complete washouts reported on Hwys 1,3,7. Similarly, rail lines have been impacted with assessments on-going
- Weather has hampered rescue operations of trapped and isolated motorists along routes impacted by debris flows

### WEATHER UPDATE:

- **Numerous precipitation records were broken today across the Southwestern and interior regions. Awaiting official confirmation of totals. Some regions will have received 150-275mm of precipitation in less than 24hours**
- The rain event was followed by a cold front that brought winds of 70-90km/h on Vancouver Island and Southwestern BC. The cold front ushered in cooler temperatures bringing snowfall warnings to several Interior regions and mountain passes
- General improving trend with dry and cool weather prevailing on Monday night and Tuesday, and Arctic air from the Yukon will invade Fort Nelson, the Peace and the North Rockies. Conditions will remain dry across most of the province Wednesday, except in the North where clouds will increase, followed by light precipitation. Increasing moisture from another Pacific system could reach Vancouver Island and the South Coast and Cascade Mountains late Thursday.

## SIGNIFICANT HEALTH SYSTEM IMPACTS

- All Interior Health facilities within the community of Merritt have been or are in the process of being evacuated (details contained in IH Sitrep)
- Community of Hope remains cut-off from outside communities with key transportation links severed
- BCEHS is supporting tactical evacuations as required to assist isolated and trapped motorists on BC Hwys
- Weather has grounded most rotary wing transport within impacted areas limiting BCEHS air resources to impacted sites (Hope, Merritt). This situation is expected to improve on 16 Nov
- Power outages are impacting multiple sites in multiple regions. HAs are reporting no major issues with back-up power solutions in place
- HHR staffing impacts have been observed in HAs but no significant disruptions reported
- Resupply of isolated communities (Hope) with relief staff and resources are being planned

## ASSESSED PROVINCIAL HEALTH SYSTEM RISKS

The Emergency Management Unit has assessed the following risks to the provincial health system:

1. Human Health Resourcing
  - Inability for staff to access places of work due to short-term to long-term route closures
  - Exacerbates already tenuous HHR situation
2. Supply chain impacts
  - Short-term: Inability to access isolated communities with pharmaceuticals, medical supplies
  - Long-term: Sustained impacts to supply chain network
3. Public Health complications
  - COVID-19 transmission among evacuees
  - Application of public health orders
  - Flooding complications including impacts to drinking water supplies

### HEALTH AUTHORITY SUMMARY:

Due to dynamic and evolving situation no Health Authority summary information is available for this reporting period. Specific information can be requested direct from Health Authorities, PHSA, BCEHS or the Provincial Health Duty Officer.

Detailed information for this event has been received from the following health sector partners:

- Fraser Health Authority
- Interior Health Authority
- Vancouver Island Health Authority
- BCEHS

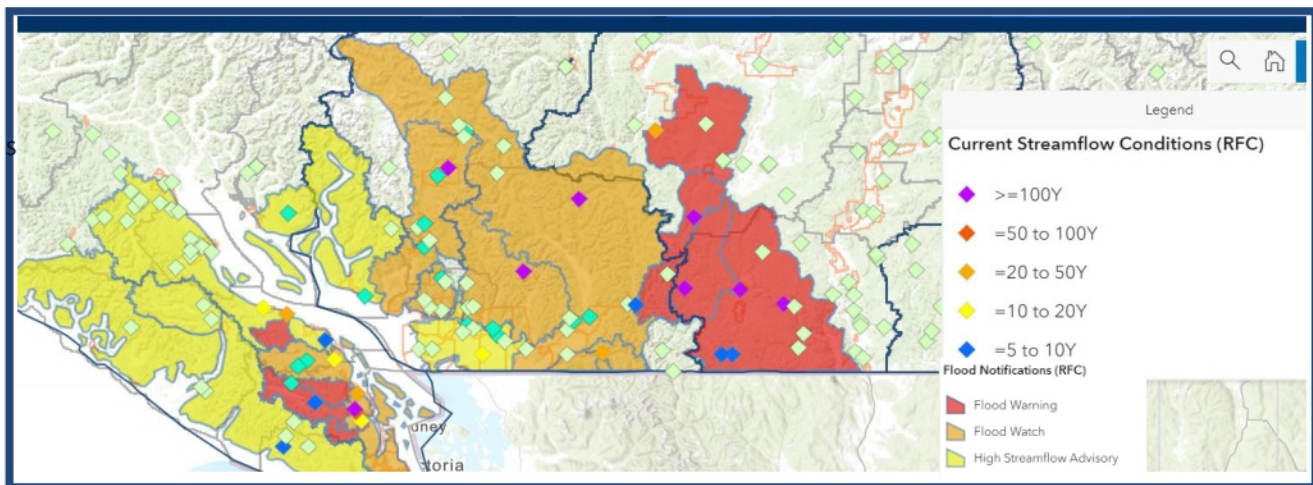


**EXTERNAL AGENCY SUPPORTING MATERIAL:**

**Summary of Transportation Impacts:**



[BC River Forecast Centre](#): Flood warning and advisory map as of 15 Nov 2021 (includes streamflow conditions)



[Environment and Climate Change Canada](#): Weather Alerts (as of 2200hrs 15 Nov 2021). Click link for most current weather alerts





## OVERVIEW

### PURPOSE:

- The provincial health system is currently experiencing significant impacts from an Atmospheric River weather event
- To ensure situational awareness across the provincial health system response structure, event updates have been provided throughout the day. This situation report summarizes key impacts and risks

**DATE ISSUED:** Monday, November 15, 2021

**PREPARED BY:** MoH EMU

**REPORTING PERIOD:** Information current as of 2100hrs on Monday 15 Nov 2021

**NEXT REPORT:** To be determined

**HECC ACTIVATION LEVEL:** 1

### NOTE:

Given the dynamic nature of the provincial weather situation, the following information is subject to change after this report is distributed. Any significant developments will be communicated sooner as necessary.

### SITUATION REPORT SECTIONS:

HIGHLIGHTS	SUPPORTING INFORMATION
<ul style="list-style-type: none"><li>• PROVINCIAL SITUATION SUMMARY:</li><li>• SIGNIFICANT HEALTH SYSTEM IMPACTS</li><li>• HEALTH SYSTEM RISKS</li></ul>	<ul style="list-style-type: none"><li>• HEALTH AUTHORITY SUMMARIES</li><li>• EXTERNAL AGENCY SUPPORTING MATERIAL</li></ul>

### PROVINCIAL HEALTH SYSTEM CONTACTS:

- Emergency inquiries impacting the BC Provincial Health System can be directed to the 24/7 Provincial Health Duty Officer (PHDO):
  - [Hlth.dutyofficer@gov.bc.ca](mailto:Hlth.dutyofficer@gov.bc.ca)  
250-686-6061
- The following individuals are providing provincial level coordination:
  - John Lavery, Executive Director Health Emergency Management BC (HEMBC)  
[John.lavery@phsa.ca](mailto:John.lavery@phsa.ca)
  - Gerry Delorme, Director Provincial Clinical Operations, HEMBC  
[gerry.delorme@viha.ca](mailto:gerry.delorme@viha.ca)
  - s.17 Jamie Galt, Director Emergency Management Unit  
[Jamie.galt@gov.bc.ca](mailto:Jamie.galt@gov.bc.ca)  
s.17

## PROVINCIAL SITUATION

### PROVINCIAL SITUATION SUMMARY:

- An extreme atmospheric weather event continues to impact the province in the form of significant precipitation and warming resulting in landslides, mudslides, flooding, and power outages
- **The situation remains dynamic and has not currently stabilized even with a general improvement in weather throughout the day**
- Several communities are under evacuation orders and alerts including the Town of Merritt (See *EMBC Regional SITREPs for details on community level orders and alerts*)
- Transportation corridors have been significantly impacted with complete washouts reported on Hwys 1,3,7. Similarly, rail lines have been impacted with assessments on-going
- Weather has hampered rescue operations of trapped and isolated motorists along routes impacted by debris flows

### WEATHER UPDATE:

- **Numerous precipitation records were broken today across the Southwestern and interior regions. Awaiting official confirmation of totals. Some regions will have received 150-275mm of precipitation in less than 24hours**
- The rain event was followed by a cold front that brought winds of 70-90km/h on Vancouver Island and Southwestern BC. The cold front ushered in cooler temperatures bringing snowfall warnings to several Interior regions and mountain passes
- General improving trend with dry and cool weather prevailing on Monday night and Tuesday, and Arctic air from the Yukon will invade Fort Nelson, the Peace and the North Rockies. Conditions will remain dry across most of the province Wednesday, except in the North where clouds will increase, followed by light precipitation. Increasing moisture from another Pacific system could reach Vancouver Island and the South Coast and Cascade Mountains late Thursday.

## SIGNIFICANT HEALTH SYSTEM IMPACTS

- All Interior Health facilities within the community of Merritt have been or are in the process of being evacuated (details contained in IH Sitrep)
- Community of Hope remains cut-off from outside communities with key transportation links severed
- BCEHS is supporting tactical evacuations as required to assist isolated and trapped motorists on BC Hwys
- Weather has grounded most rotary wing transport within impacted areas limiting BCEHS air resources to impacted sites (Hope, Merritt). This situation is expected to improve on 16 Nov
- Power outages are impacting multiple sites in multiple regions. HAs are reporting no major issues with back-up power solutions in place
- HHR staffing impacts have been observed in HAs but no significant disruptions reported
- Resupply of isolated communities (Hope) with relief staff and resources are being planned

## ASSESSED PROVINCIAL HEALTH SYSTEM RISKS

The Emergency Management Unit has assessed the following risks to the provincial health system:

1. Human Health Resourcing
  - Inability for staff to access places of work due to short-term to long-term route closures
  - Exacerbates already tenuous HHR situation
2. Supply chain impacts
  - Short-term: Inability to access isolated communities with pharmaceuticals, medical supplies
  - Long-term: Sustained impacts to supply chain network
3. Public Health complications
  - COVID-19 transmission among evacuees
  - Application of public health orders
  - Flooding complications including impacts to drinking water supplies

### HEALTH AUTHORITY SUMMARY:

Due to dynamic and evolving situation no Health Authority summary information is available for this reporting period. Specific information can be requested direct from Health Authorities, PHSA, BCEHS or the Provincial Health Duty Officer.

Detailed information for this event has been received from the following health sector partners:

- Fraser Health Authority
- Interior Health Authority
- Vancouver Island Health Authority
- BCEHS

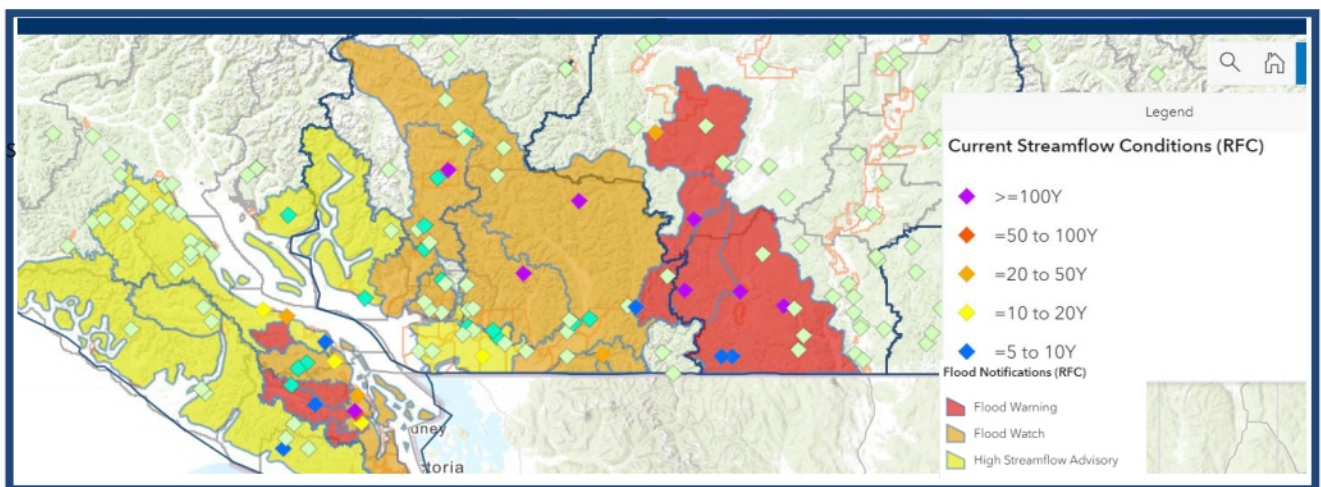


**EXTERNAL AGENCY SUPPORTING MATERIAL:**

**Summary of Transportation Impacts:**



[BC River Forecast Centre](#): Flood warning and advisory map as of 15 Nov 2021 (includes streamflow conditions)





[Environment and Climate Change Canada](#): Weather Alerts (as of 2200hrs 15 Nov 2021). Click link for most current weather alerts



**PECC ACTIVATION DAY NO. 1  
NOVEMBER 15, 2021**

**Hazard(s): Atmospheric River Storm**

**Operational Period: November 15, 2021, 08:30 hrs to Closing**

**Next Sitrep will be issued: November 16, 2021**

**Primary PECC E-mail: [pecc.ops1@gov.bc.ca](mailto:pecc.ops1@gov.bc.ca)**

**Primary PECC Phone: 778-698-8617**

**Information current as of Nov 15, 2021 at 17:00h**

**Note:** Information contained in this situation report is for operational purposes only. The contained information is not meant for external dissemination. If you wish to use information contained herein for release, you must clear it with the PECC Director.

## **PROVINCIAL SITUATION**

The EMBC Provincial Emergency Coordination Centre (PECC) is activated in support of three Provincial Regional Emergency Operations Centres (PREOCs) and a widespread atmospheric river storm event that has resulted in multiple flooding, landslide, mudslide, power outage and other incidents and human consequence impacts across the BC southern coastal and interior regions.

The storm has damaged, blocked, and impacted multiple roadways, causing widespread road closures and stranding hundreds of motorists overnight on Nov. 14, 2021. Rescue efforts have continued throughout Nov. 15, 2021, and reports indicated all stranded motorists have now been able to seek shelter and appropriate supports in nearby communities.

First Nations and Local Authority communities have seen widespread flooding and power outages which have led to roadway closures, infrastructure impacts, evacuation orders and evacuation alerts. The situation is dynamic and full, accurate situational awareness remains challenging, but current estimates suggest that provincially there are over 524 properties on Evacuation Order, 315 properties on Evacuation Alert and then an additional 7,800 people on Evacuation Order in the Town of Merritt because of the storm.

As a result of the severe weather events this week, EMBC has approved Disaster Financial Assistance (DFA) for flooding in the Vancouver Island & Central Coast, Southwest, and Central regions of the province, including all First Nations communities, electoral areas, and municipalities within these areas.

## **WEATHER OUTLOOK AND ALERTS**

A significant atmospheric river has made landfall across southern coastal regions of British Columbia. Observed rainfall amounts since yesterday have been in the 50-185 mm range across the Coquihalla, upper Coldwater and Tulameen River watersheds. Temperatures have been rising, with temperatures in the 5-7°C range being observed at automated snow weather stations across the region. Snowmelt is being observed at mid-elevations and is adding additional runoff to rivers. Rivers have risen rapidly, with

further rain in the forecast through today, Monday, November 15th (turning to snow at higher elevations).

While the weather picture calmed somewhat over the day, weather warnings continue for much of the southeastern part of the province tonight, including both rainfall and snow warnings. More information available on current warnings available from [Environment Canada](#).

## **RIVER FORECAST CENTRE (RFC) WATCHES AND WARNINGS**

### **EMBC Central Region**

RFC is upgrading or maintaining a Flood Warning for:

- Lower Nicola River
- Similkameen River
- Tulameen River and tributaries
- Coldwater River

### **EMBC Southwest Region**

RFC is upgrading or maintaining a Flood Warning for:

- Coquihalla River
- Sumas River and areas around the US Border

RFC is upgrading to or maintaining a Flood Watch for:

- Sea-to-Sky
- Howe Sound
- North Shore Mountains Fraser Valley including surrounding tributaries
- Fraser Canyon tributaries, including tributaries around Hope
- Chilliwack River

RFC is maintaining a High Streamflow Advisory for:

- Sunshine Coast
- Metro Vancouver

### **EMBC Vancouver Island & Central Coast Region**

RFC is upgrading or maintaining a Flood Warning for:

- Englishman River (NEW)
- Cowichan River
- Koksilah River

## **HUMAN CONSEQUENCE IMPACTS**

### **EMERGENCY SUPPORT SERVICES (ESS)**

Due to the widespread and dynamic nature of the extreme atmospheric river event, exact reporting of ESS activity across all regions and communities remains challenging, and the information below will likely be amended as greater reporting accuracy is achieved.

The total number of active ESS Reception Centres is reported to be approximately 20 (many of these communities are providing mutual aid as host communities)

Communities hosting Reception Centres include:

- Kamloops
- Kelowna



- Abbotsford
- Chilliwack
- Hope
- Agassiz
- Regional District Okanagan Similkameen/Penticton
- Salmon Arm

#### Additional Information

- The Provincial ESS Call Centre is receiving high call volume and has extended their hours until 18:00h tonight
- Availability of commercial accommodation in Kamloops is low and the city is experiencing up to 5-hour wait times at their Reception Centre to provide supports.
- Kelowna has accommodation capacity for additional evacuees.

## FLOOD IMPACTS

### INFRASTRUCTURE & TRANSPORTATION

- Highway Closures:
  - Highway 1 (Agassiz – Spences Bridge)
  - Highway 3 (Sunshine Valley)
  - Highway 5 (Hope – Merritt)
  - Highway 7 (Maple Ridge – Hope)
  - Highway 11 (US border – Vye Road, Abbotsford)
- Stranded Motorists Incident – Highway 7 near Agassiz - SWE
  - Two vehicles and a semi-truck went over an embankment due to mudslide.
  - Approximately 80 vehicles were stranded overnight on the roadway.
  - Agassiz Fire Department, Hope SAR and HUSAR Taskforce #1 responded to assist people trapped in their vehicles
  - The Joint Rescue Coordination Centre (JRCC) supported the response with 3 Canadian Armed Forces (CAF) Cormorant helicopters
  - Reports suggest over 270 people were rescued from site and up to 5 patients were transferred to hospital
- Stranded Motorists Incident - Hwy 99 near Lillooet - SWE
  - At least 3 slides were identified in the 30km area south of Lillooet
  - 42 vehicles and 65 people were stranded at the location
  - Ground Search and Rescue teams assisted the response
  - Reports indicate all motorists were rescued
  - Information was limited due to a lack of cell coverage in the area
- Stranded Motorists Incident – Hwy 1 near Haig - SWE
  - Approximately 200 vehicles were stranded on Hwy 1 by landslides in the Haig area
  - Rescue efforts were slowed by the need to de-energize nearby powerlines
  - After de-energization had occurred, an egress path to Hope was cleared
  - As of the evening of Nov. 15, 2021, all motorists are reported to have arrived in Hope
  - Further emergency supports are being planned for the Hope community and travellers stranded there for Nov. 16, 2021
- Train Derailment (2 Cars) - Mile 80 Yale – DGIR Code 1 - SWE
  - Cause unknown, but suspected to be due to rain
  - No dangerous goods; dry materials only
  - No reports of injuries or waterways impacted



- Reports are being investigated of further mud and landslides events impacting District of Kent, Highway 1, and Abbotsford
- There have been multiple additional road closures throughout the day in the SWE, CTL and VIC regions, with impacts continuing in numerous locations across all 3 regions.
- For a complete list of highway and road closures, including ferry disruptions due to flooding, see [DriveBC](#).

#### UTILITIES/ TELECOMMUNICATIONS

- Fortis BC:
  - Sunshine Coast at Roberts Creek distribution line and intermediate pressure line exposed in creek. Hydro line de-energized and FD on scene.
  - Halfmoon Bay distribution pressure line is exposed
  - A main distribution line at Princeton is impacted with up to 1200 customers possibly affected
  - Distribution line at Merritt is impacted but the full extent cannot be confirmed due to current high-water levels
  - Fraser Valley distribution line service in a farmer's field near Seabird Island is leaking and being isolated
- Telecommunications:
  - Bell cellular voice/data outages in the Fraser Valley and Northern Vancouver

#### CROSS-MINISTRY AND AGENCY UPDATES

#### HEALTH

- Due to the sewage and water shutdowns in Merritt, Interior Health is planning the evacuation of the Merritt hospital, as well as several other health facilities in the area, including Long-Term-Care and Assisted Living sites.
- Power outages and road closures are impacting staffing and critical supply lines to health facilities and Long-Term Care and Assisted Living sites, particularly in the Hope area.
- Some vaccine clinics in VCH/PHC have been canceled due to weather conditions and travel issues.
- Planning underway to prepare for the impacts of expected wind and power outages in the Island and south-coast areas overnight.

#### PROVINCIAL REGIONAL UPDATES

#### CENTRAL REGION (CTL)

**CTL PREOC** has activated in response to flooding.

Due to the widespread and dynamic nature of the extreme atmospheric river event, exact reporting of community impacts remains challenging, and the information below will likely be amended as greater reporting accuracy is achieved.

#### **FIRST NATIONS**

- Coldwater First Nation
  - Band Council Resolution Declared
  - Evacuation Order Issued: 3 Properties
- Shakan First Nation

- Band Council Resolution Declared
- Evacuation Order Issued: Approximately 70 people
- Evacuation Alert Issued
- Nooaitch First Nation
  - Band Council Resolution Declared
  - Evacuation Order Issued: Approximately 100 people

#### **LOCAL AUTHORITIES**

- City of Merritt
  - State of Local Emergency Declared
  - Evacuation Order Issued: Entire Community (Approx. 7800 people)
  - Due to failure of sewage treatment plant (unsanitary conditions)
  - Significant ESS supports being provided in Kamloops & Kelowna
  -
- Columbia Shuswap Regional District
  - State of Local Emergency Declared
- Regional District Okanagan-Similkameen
  - EOC Activated
  - State of Local Emergency Declared
  - Evacuation Order Issued: 24 Properties
- Thompson Nicola Regional District
  - Evacuation Alerts Declared
    - Electoral Area “I” (Blue Sky Country)
    - Electoral Area “M” (Beautiful Nicola Valley – North)
    - Electoral Area “N” (Beautiful Nicola Valley – South)
- Tulameen
  - EOC Activated
- Town of Princeton
  - EOC Activated
  - State of Local Emergency Declared
  - Evacuation Order Issued: Properties along the Tulameen River
  - Evacuation Alert Issued: Properties along the Similkameen & Tulameen Rivers
- Salmon Arm District
  - EOC Activated

#### **ESS Reception Centres:**

- Regional District Central Okanagan: Kelowna – Parkinson Activity Centre
- City of Kamloops: McArthur Island Sport and Event Centre
- Regional District Okanagan Similkameen: Penticton - Bus Barn

### **SOUTHWEST REGION (SWE)**

#### **SWE PREOC activated in response to flooding**

Due to the widespread and dynamic nature of the extreme atmospheric river event, exact reporting of community impacts remains challenging, and the information below will likely be amended as greater reporting accuracy is achieved.

#### **FIRST NATIONS**

- Chawathil First Nation
- Kwikwetlem First Nation
  - Put on flood alert from BC Hydro Dams.
- Leq'á:mel First Nation
- Matsqui First Nation
  - Band Council Resolution Declared
- Peters First Nation
- Skawahlook First Nation

#### **LOCAL AUTHORITIES**

- City of Abbotsford
  - State of Local Emergency Declared
  - 3 Evacuation Orders Issued
  - 7 Evacuation Alerts Issued
- Bowen Island
- Burnaby
- City of Chilliwack
- Fraser Valley Regional District
  - State of Local Emergency Declared
  - 4 Evacuation Orders Issued
  - 3 Evacuation Alerts Issued
- Town of Hope
  - Access from all Highways (1,3,5) cut off
  - Significant power outages for much of the day (w/hospital on generator)
  - Many motorists stranded in community
  - Report of restoration of power late day
- District of Kent
  - State of Local Emergency Declared
- City of Langley
- Mission
- New Westminster
- Pemberton
- Pitt Meadows
- Port Coquitlam
- Richmond
- Squamish Lillooet Regional District
- Squamish District
- Sunshine Coast Regional District

#### **ESS Reception Centres:**

- Abbotsford: Abbotsford Recreation Centre
- Agassiz: Agassiz Agricultural Hall
- Chilliwack: Chilliwack Secondary School
- Hope: Grace Baptist Church and Hope Secondary School

### **VANCOUVER ISLAND AND CENTRAL COAST REGION (VIC)**

**VIC PREOC** activated in response to flooding

## **FIRST NATIONS**

- Halalt First Nation:
  - 150 evacuees
  - Band Council Resolution Declared
  - Evacuation Order Issued
- Snuneymuxw First Nation:
  - Band Council Resolution Declared
  - Evacuation Order Issued
  - 25 evacuees (approximate)
- Penelakut First Nation:
  - Evacuation Order Issued
  - 50 evacuees (approximate)
- Cowichan Tribes:
  - Evacuation Order Issued
  - 120 evacuees (approximate)
- Pauquachin First Nation
  - Evacuation Order Issued

## **LOCAL AUTHORITIES**

- Cowichan Valley Regional District:
  - State of Local Emergency Declared (applying to Cowichan Tribes, Halalt First Nation, Penelakut Tribe, Cowichan Valley Regional District, Municipality of North Cowichan and City of Duncan)
  - Evacuation Order Issued (City of Duncan)
  - 2 ESS reception centres open
  - SOLE in place
- Nanaimo Regional District:
  - 3 States of Local Emergency in place
    - Parts of Electoral Area A
    - Parts of Electoral Area G: Pathfinder Resort
    - Parts of Electoral Area G: Cedar Grove Campsite
  - 3 Evacuation Orders Issued
    - Englishman River
    - Nanaimo River
    - Little Qualicum
- Capital Regional District
  - EOC Activated
- District of Sooke
  - EOC Activated
- District of Highlands
  - EOC Activated
- City of Langford
  - EOC Activated
  - Evacuation Alert Issued



- 20+ properties on alert
- Central Saanich
  - EOC activated

**ESS Reception Centres:**

- Cowichan Valley Regional District (2 Reception Centres)
- Nanaimo ESS taking on a tele-registration support role for Halalt FN
- Oceanside EMO ESS is going to support first 72 hrs in Parksville

## Key Internet Links:

**Avalanche Canada Weather Forecast** [Drying out at last \(avalanche.ca\)](http://avalanche.ca)

### **Emergency Info BC**

<https://www.emergencyinfobc.gov.bc.ca>

**BC Hydro Outage Map** <https://www.bchydro.com/power-outages/app/outage-map.html>

### **BC River Forecast Centre**

<https://www2.gov.bc.ca/gov/content/environment/air-land-water/water/drought-flooding-dikes-dams/river-forecast-centre>

### **Drive BC**

<https://www.drivebc.ca/mobile/events/index.html>

**Information about Disaster Financial Assistance is available on the DFA web site at**

<http://www.gov.bc.ca/disasterfinancialassistance>

**Environment Canada** [British Columbia - Weather Conditions and Forecast by Locations - Environment Canada](#)

## APPROVED BY:

Brendan Ralfs  
PECC Director

**Note:** This document may be distributed within your agency. Any distribution outside your agency requires prior approval from the PECC Director

**PECC ACTIVATION DAY NO. 2****NOVEMBER 16, 2021****Hazard(s): Atmospheric River Storm****Operational Period: November 16, 2021, 08:30 hrs to Closing****Next Sitrep will be issued: November 17, 2021****Primary PECC E-mail: [pecc.ops1@gov.bc.ca](mailto:pecc.ops1@gov.bc.ca)****Primary PECC Phone: 778-698-8617****Information current as of Nov 16, 2021 at 17:00h****\*New information is noted in blue font**

**Note:** Information contained in this situation report is for operational purposes only. The contained information is not meant for external dissemination. If you wish to use information contained herein for release, you must clear it with the PECC Director.

**PROVINCIAL SITUATION**

The EMBC Provincial Emergency Coordination Centre (PECC) activated today in support of three Provincial Regional Emergency Operations Centres (PREOCs) and the impacts of the atmospheric river storm event that resulted in multiple flooding, landslide, mudslide, power outage and other incidents and human consequence impacts across the BC southern coastal and interior regions.

The storm damaged, blocked, and impacted multiple roadways, causing widespread road closures and stranding hundreds of motorists overnight on Nov. 14, 2021. [Rescue efforts have continued throughout Nov. 16, 2021, and many stranded motorists have now been able to seek shelter and appropriate supports in nearby communities. However, several communities and First Nations remain isolated, and efforts are ongoing to provide accommodation and support. MOTI anticipates Highways 1,3, and 7 may be restored this week.](#)

[Travelers have also found themselves stranded in many areas of the province and the Province is following up to support them. Currently, in Hope 1,100 stranded travelers are receiving local support, with 900 of those in group lodgings. BCWS is working to move resources by air to support the relief efforts](#)

Many First Nations and Local Authority communities have seen widespread flooding and power outages which have led to roadway closures, infrastructure impacts, evacuation orders and evacuation alerts. [Current estimates suggest that there are approximately 17,775 people evacuated due to impacts from this storm event in BC, with 5,918 properties on Evacuation Order, and 3,632 properties on Evacuation Alert.](#)

As a result of the severe weather events this week, EMBC has approved Disaster Financial Assistance (DFA) for flooding in the Vancouver Island & Central Coast, Southwest, and Central regions of the province, including all First Nations communities, electoral areas, and municipalities within these areas.

**WEATHER OUTLOOK AND ALERTS**



This morning was largely dry, with a ridge of high pressure over the interior, bringing largely cold and dry conditions. This afternoon, mainly dry conditions were also expected, with only the Northwest mountain range seeing increasing cloud and precipitation ahead of an advancing warm front.

On Wednesday, it will remain dry provincially as the core of the high-pressure retreats into Alberta, but a secondary ridge still extends into the Columbias, maintaining clear conditions with gradually moderating temperatures.

Many of the weather watches and warnings in effect yesterday have now been rescinded by Environment Canada, with snowfall warnings and winter storm warnings remaining only for northern coastal BC.

### **RIVER FORECAST CENTRE (RFC) WATCHES AND WARNINGS**

Flow reductions are anticipated overnight tonight and for the remainder of the week.

#### **EMBC Central Region**

RFC is maintaining a Flood Warning for:

- Lower Nicola River
- Coldwater River

And has downgraded Flood Warnings to Flood Watches for:

- Similkameen River
- Tulameen River and tributaries

#### **EMBC Southwest Region**

RFC is maintaining Flood Warnings for:

- Coquihalla River
- Sumas River and areas around the US Border

And has maintained the following Flood Watches for:

- Fraser Canyon tributaries, including tributaries around Hope
- Fraser Valley

#### **EMBC Vancouver Island Central Region**

RFC has downgraded to High Streamflow Advisories for:

- Chemainus
- Englishman River
- Cowichan River
- Koksilah River

## HUMAN CONSEQUENCE IMPACTS

### PROVINCIAL SUMMARY

The following numbers reflect documents related to recent storm events, not pre-existing events, and should be considered approximate only.

	CTL	NWE	NEA	SEA	SWE	VIC	Totals
Band Council Resolutions	1						1
States of Local Emergency	7				4	2	13
Evacuation Orders	10				12	4	26
Properties on Order	3,290				2,581	47	5,918
Population on Order	9,750				7,803	222	17,775
Evacuation Alerts	7			1	5		13
Properties on Alert	3,368			10	254		3,632
Population on Alert	4,479			-	720		5,199

### EMERGENCY SUPPORT SERVICES (ESS)

- The Provincial ESS Call Centre is receiving a consistently high call volume and have extended their hours of operation.
- Commercial accommodation in Kamloops is limited and only those on Order are receiving commercial accommodation.
- Kelowna has some capacity and buses are transporting people from Kamloops to Kelowna if they need accommodation support.
- ESS HQ Staff are working to support Abbotsford who is seeking personnel support at their Reception and Group Lodging sites. Abbotsford is also engaged with Samaritan's Purse to support.

The total number of active ESS Reception Centres is reported to be approximately 20 (many of these communities are providing mutual aid as host communities) and some may be informal centres not seeking provincial support.

Known communities hosting Reception Centres include:

- Kamloops

- Kelowna
- Abbotsford
- Chilliwack
- Hope
- Agassiz
- Regional District Okanagan Similkameen/Penticton
- Salmon Arm
- Cowichan Valley Regional District

Reception Centre locations are posted publicly on Emergency Info BC.

## FLOOD IMPACTS

### INFRASTRUCTURE & TRANSPORTATION

- Highway Closures:
  - Highway 1 (Agassiz – Spences Bridge) – Major reconstruction will be required for Hwy1 (Tank Hill).
  - Highway 3 (Sunshine Valley) – Likely to be the first route to lower mainland opened.
  - Highway 5 (Hope – Merritt) - Major reconstruction will be required for the Hwy 5 bridge over Coldwater River.
  - Highway 7 (Maple Ridge – Hope) – Now cleared for emergency access to Chilliwack with progress towards Hope.
  - Highway 8 (Merritt to Spences Bridge) - Alternate route being established, expected opening for foot access is 2 days, vehicles 5 days.
  - Highway 11 (US border – Vye Road, Abbotsford).
  - Highway 99 (South of Lillooet) – freed travelers headed south towards Pemberton.
  - As of the evening of Nov. 15, 2021, all motorists are reported to have arrived in Hope
  - Further emergency supports are being planned for the Hope community and travellers stranded there for Nov. 16, 2021.
- CP Rail lines damaged through Fraser Valley
  - Understand no short-term impact to Lower Mainland critical supplies.
  - One train caught in Debris flow east/north of Spuzzum.
  - No injuries. Empty, no releases.
- Reports are being investigated of further mud and landslides events impacting District of Kent, Highway 1, and Abbotsford
- There have been multiple additional road closures throughout the day in the SWE, CTL and VIC regions, with impacts continuing in numerous locations across all 3 regions.
- For a complete list of highway and road closures, including ferry disruptions due to flooding, see [DriveBC](#).

### UTILITIES/ TELECOMMUNICATIONS

- BC Hydro
  - Restored service to 56k customers overnight.
  - Remaining: 13k in Thompson-Shuswap and Okanagan, 1k North Fraser
  - Limited access is delaying restoration for remaining clients.
  - Hope: Weather mitigation in progress, anticipate stable power for Hope today.
- Dams:
  - Receding inflows at all LML and Sea-to-Sky sites.



- Flows peaked 15th Nov. Flows are not significant to river levels.
- Walheach Dam continues to use spillway.
- Fortis BC:
  - Sunshine Coast at Roberts Creek distribution line and intermediate pressure line exposed in creek. Hydro line de-energized and FD on scene.
  - Halfmoon Bay distribution pressure line is exposed
  - A main distribution line at Princeton is impacted with up to 1200 customers possibly affected
  - Distribution line at Merritt is impacted but the full extent cannot be confirmed due to current high-water levels
  - Fraser Valley distribution line service in a farmer's field near Seabird Island is leaking and being isolated
- Telecommunications:
  - Bell cellular voice/data outages in the Fraser Valley and Northern Vancouver

## CROSS-MINISTRY AND AGENCY UPDATES

### HEALTH

- Power outages and road closures are impacting staffing and critical supply lines to health facilities and Long-Term Care and Assisted Living sites, particularly in the Hope area. Work is underway to supply relief physicians and pharmaceuticals to Hope Medical Centre, despite lack of road access.
- The water system has failed in Princeton causing the health facilities needed to be closed. IHA evacuating the 10 hospital and 38 residents from one care home.
- Princeton and Merritt: Long-term care, acute care, and assisted living patients evacuated.

### SAR BRANCH

The EMBC SAR Unit is activated in support of the evacuations due to floods.

**High Level SAR Activation Summary:** November 14/21 1300 – Nov. 16/21 1300:

- 37 SAR Incident(s) with 290 Public Safety Lifeline Volunteers (PSLVs) responded
- 21 Civil Emergency Response(s) with 266 PSLVs responded

### SWE SAR Group Updates:

#### Hope

- Team is isolated due to road closures
- Team is rested

#### Chilliwack

- Working on clearing people from the Sumas prairie using boats and rafts
- Team is also isolated due to road closures

#### Coquitlam

- Team not directly affected by flooding
- Regional HET's team working with CFVSAR on the Sumas Prairie

#### South Fraser

- Team is rested and not directly affected by local flooding
- Mutual aid help to Central Fraser Valley SAR

#### Kent Harrison

- Team is isolated due to road closures. Only connection is with Chilliwack
- SAR trucks were caught behind a landslide but since then Rescue truck was recovered and other truck was left behind for transport to deliver evac notices

#### Central Fraser Valley

- Directly impacted by the flooding (Sumas prairie)
- Conducting evacuations on the Sumas Prairie

#### Mission

- Did a rescue of 6 subjects in their area due to road wash out
- Mutual aid help to CFVSAR for evacuation of the Sumas prairie

#### Ridge Meadows

- Team not directly affected by the flooding
- Team has the capability to provide mutual aid

### CTL SAR Group Updates:

#### Princeton

- Team was exhausted as of November 15, Penticton provided coverage
- Community has been impacted by flooding waters. SAR Hall has been used for operations

#### Nicola Valley

- Municipality under Evacuation Order
- Response capacity is reduced, but no request for replacement
- Unable to deploy out of area, minimal resources available

#### Kamloops

- High operation temp November 11 – 15 created fatigue
- Response truck has been recovered

#### Vernon

- Winch is unavailable with no ETA of return
- Low in SAR Managers

## PROVINCIAL REGIONAL UPDATES

### CENTRAL REGION (CTL)

CTL PREOC has activated in response to flooding.

### KEY CTL REGIONAL INFORMATION

Total Active Alerts: 9

Total Orders: 14

Total States of Local Emergency: 5

Total Band Council Resolutions: 3

### FIRST NATIONS

- Coldwater First Nation
  - Band Council Resolution.
  - IR #2 has been isolated and is without water and power.
- Cook's Ferry Indian Band
  - Band Council Resolution.

- One Alert for for IRs #2, 3, 4A, 4B, 4C, 5, 5A, 6, 8, 8A, 9, 10, 11, 11A, 16, 17, 18, 19, 20, 21 & 22.
  - Two Orders for #1 and IR#7.
- Lower Similkameen Indian Band
  - Band Council Resolution.
  - Chopaka bridges have been compromised and are closed in both directions.
  - One Alert for Chopaka IR #7/8; Similkameen IR #2, Alexis IR #9, Ashnola IR #10.
- Lytton First Nation
  - Community is without power.
  - Water system currently not operational.
- Nicomen Indian Band
  - Bridge has been washed out
- Nooaitch First Nation
  - Band Council Resolution.
  - Two bridges washed out.
  - Community is isolated.
- Shakan First Nation
  - Band Council Resolution Declared
  - Evacuation Order issued for IR# 11
- Skuppah Indian Band
  - George Rd washout has caused there to be no access to the water treatment plant.
  - IR #4 water intake has been washed out.
  - Currently relying on the remaining water supply in their reservoir.

#### **LOCAL AUTHORITIES**

- City of Merritt
  - State of Local Emergency Declared.
  - Evacuation Order Issued: Entire Community (approx. 7800 people), due to failure of sewage treatment plant (unsanitary conditions).
  - The wastewater treatment plant is down, with no estimated date for bringing it online
  - The water system is contaminated as a result of a well malfunction and the City has turned the water off.
  - Middlesboro Bridge has collapsed.
- Columbia Shuswap Regional District
  - Activated the EOC to a level one on November 15, 2021 in response to flooding and sandbag requests.
- Regional District Okanagan-Similkameen
  - EOC Activated
  - RDOS EAB – 1 Alert for low-lying properties along the Similkameen River. 1 order for 4 properties on Chopaka Road.
  - RDOS EAG – 1 Alert for low-lying properties along the Similkameen River, 1 order for properties Schedule 1.
  - RDOS EAH – 1 Alert for low-lying properties along the Similkameen River, 2 orders for the community of Coalmont.
  - RDOS – Keremeos – One Alert for low-lying properties along the Similkameen River within the Village of Keremeos.
- Thompson Nicola Regional District



- TNRD – Nicola - Reports of stranded residents at risk along Highway 8. RCMP requested to assist with wellness checks and determine if evacuation is required.
- TNRD – One Alert issued for the following Electoral Areas:
  - Electoral Area “I” (Blue Sky Country)
  - Electoral Area “M” (Beautiful Nicola Valley – North)
  - Electoral Area “N” (Beautiful Nicola Valley – South)
- TNRD – Brookmere – 2 Orders for 51 properties in Brookmere and 2 properties in EAN.
- Town of Princeton
  - EOC Activated
  - State of Local Emergency declared.
  - 3 Evacuation Order Issued: Properties along the Tulameen River.
  - 2 Evacuation Alerts Issued: Properties along the Similkameen & Tulameen Rivers.

## SOUTHWEST REGION (SWE)

**SWE PREOC** activated today in response to flooding.

### KEY SWE REGIONAL INFORMATION

Total Active Alerts: 10

Total Orders: 10

Total States of Local Emergency: 5

Total Band Council Resolutions: 0

### FIRST NATIONS

- Chawathil First Nation
  - EOC activated for flooding. 1 home is flooding and material is sliding off of bluffs around the community
- Kwikwetlem First Nation
  - EOC activated for flooding.
  - Put on flood alert from BC Hydro Dams.
- Leq’á:mel First Nation
- Lower SStl’atl’imx (LSTC)
  - Approximately 60 households are without power in Samahquam and Skatin.
  - LSTC has spoken to FLNRO, BC Hydro, and Lizzie Bay/IRM to coordinate efforts to restore power and access. FLNRO and BC Hydro will have assessment crews out first thing 2021NOV16 to begin the repair/reconnection of power lines and routes
  - In-SHUCK-ch FSR - Road access to north to Pemberton has not been established for all communities.
- Matsqui First Nation
  - Band Council Resolution
  - Requested sandbags and sand due to localized flooding on IR 2 and IR 4.
- Peters First Nation
  - EOC activated due to flooding.
- Seabird Island
  - EOC activated for flooding.
- Shsw’ow’hamel First Nation
  - EOC activated for flooding.

- Skawahlook First Nation
  - EOC activated for flooding.
- Soowahlie First Nation:
  - EOC activated for flooding.
  - Currently no power or water due to flooding activity.
- Squamish First Nation:
  - EOC activated for flooding.
- Sts'ailes First Nation:
  - Currently 2 flooded houses and 1 mobile home with water underneath. Community is currently out of sandbags.
- Sumas First Nation
  - EOC activated for flooding

#### **LOCAL AUTHORITIES**

- City of Abbotsford
  - State of Local Emergency declared
  - 2 Evacuation Orders Issued
    - Straiton Road (22 Homes)
    - Sumas Prairie including the area bordered by: Sumas Mountain, DeLair Road and Old Yale Road to the North, The USA Border to the South, Chilliwack City border to the East, The Ridge West of Railway Road to the West (1119 Homes)
  - 8 Evacuation Alerts Issued
    - Sumas Prairie: The Southern Rail Line to the West, Whatcom Road to the East, Highway 1 to the North, United States Border to the South (1700 Homes).
    - for Matsqui Village: Grace Road North to the Matsqui Slough (12 Homes).
    - Clayburn Area: Clayburn Village and surrounding area (30 Homes).
    - Eagle Mountain Areas: Cranberry Court, Briarwood Place, Doneagle Place (12 - 15 Homes).
    - Ten Oaks: Mount Blanchard Court, Mount Blanchard Drive and Old Clayburn Road (30 Homes).
    - Sumas Prairie: Westside of Whatcom Road, East of Huntington Village, Southside of Vye Road; Westside of Sumas Way to West of Riverside Road, East of Sumas River Dike to Boundary Road (140 Homes).
- Bowen Island
  - EOC activated due to flooding
- City of Chilliwack
  - 1 Alert for Yarrow, from Boundary Road to Browne Road, and from the Vedder River to Majuba Hill Road.
  - 2 Orders, Yarrow, from Boundary Road to Browne Road, and all of Majuba Hill and 4 properties on Yale Road and 3 properties on Chartwell Drive.
- Delta - EOC Activated in response to issues related to flooding and high winds
- Fraser Valley Regional District
  - State of Local Emergency Declared
  - 1 Alert for Chilliwack River Valley, FVRD Electoral Area "E" for 7 properties on Obyrne Road.
  - 5 Orders:
    - FVRD EA "B" for 3 properties on Fish Camp Road and 5 properties on Othello Road.

- FVRD EA “D” for 1 property on Bridal Falls Road (24 people).
  - FVRD EA “E” for 4 properties on Auchenway Road.
  - FVRD EA “E” for 13 properties on Chilliwack Lake Road and 8 properties on Wilson Road.
  - FVRD EA “H” for 17 properties on Lakeshore Drive.
- Village of Harrison Hot Springs – EOC activated due to flooding in the Miami Slough.
- Town of Hope
  - Access from all Highways (1,3,5) cut off.
  - Significant power outages for much of the day (w/hospital on generator)
  - Currently no food in town due to no power. Stores/restaurants closed.
  - Meal flown in via helicopter 2021NOV16 and provided by Salvation Army.
- Delta
  - EOC Activated in response to issues related to flooding and high winds.
  - Working to mitigate localized flooding and support critical infrastructure (drainage stations).
  - Working to restore communications (internal and external) to full capacity.
- District of Hope
- District of Kent
  - 1 Orders for Rockwell Drive, Rockwell Lane, Rockwell Place, Pirates Lane, Thunderbird Crescent, and Dogwood Lane (6 homes).
- City of Langley – EOC activated
  - Rainfall caused widespread flooding on public and private property, as well as parks and trails, and sewer lift stations.
  - Multiple roads impacted due to flooding.
- Maple Ridge- EOC activated
- Metro Vancouver- EOC activated
- Mission - EOC activated
  - Two residences on King Avenue are isolated due to complete road wash out.
  - Planning/preparing to open RC in Mission if required to support ESS flood response if required.
- New Westminster – EOC activated.
- Pemberton – EOC activated.
  - The neighbourhoods of the Peaks, Pioneer Junction, the Trailer Park on Hwy 99, the Industrial Park and One Mile Lake area have all have experienced substantial flooding.
  - A sandbag station has been set up at Municipal Hall.
- Pitt Meadows
  - Determining flood spill conditions and possible scenarios from the Alouette Dam
  - Notification to some properties along the Alouette/Pitt Rivers.
- Port Coquitlam - EOC activated.
- Squamish Lillooet Regional District – EOC activated.
- Sunshine Coast Regional District – EOC activated.
  - Stormwater flooding and erosion has impacted public services (drinking water, fire flows, roads, transit, wastewater treatment, parks) in 35+ locations, regionally. Fortis reports exposed gas line at Stephens Road and Lower Road and are preparing for re-routing and/or shutoff.
- Surrey – EOC Activated.



## VANCOUVER ISLAND AND CENTRAL COAST REGION (VIC)

VIC PREOC activated today in response to flooding.

### KEY VIR REGIONAL INFORMATION

Total Active Alerts: 1

Total Orders: 4

Total States of Local Emergency: 4

Total Band Council Resolutions: 0

### FIRST NATIONS

- Halalt First Nation:
  - Band Council Resolution.
  - [Flooding for 10 homes due to a watermain break and overland flooding.](#)
- Snuneymuxw First Nation:
  - Evacuation Order Issued.
  - 25 evacuees (approximate).
- Penelakut First Nation:
  - 50 evacuees (approximate.)
- Cowichan Tribes:
  - Evacuation Order Issued.
  - 120 evacuees (approximate).
  - [SAR doing door to door notifications. Evacuation orders and alerts in place.](#)
- Pauquachin First Nation
  - Evacuation Order Issued

### LOCAL AUTHORITIES

- Cowichan Valley Regional District:
  - [Major flooding event taking place in the Cowichan region due to heavy rainfall over the past 48 hours - Multiple road closures \(incl. highway\), restricting areas throughout the region, including within the boundaries of the Municipality of North Cowichan.](#)
  - [SOLE was issued at 1100 hrs on 2021-11-15 - 4 Evacuation Orders in effect - incl. CVRD, Cowichan Tribes, Halalt and Penelakut First Nations.](#)
- Nanaimo Regional District:
  - States of Local Emergency in place.
  - [1 Evacuation Orders remains, 2 orders rescinded: Nanaimo River and Cedar Grove/Riverside/Waters Road.](#)
- Capital Regional District
  - [EOC Activated. Highway 1 in both directions reduced to single, alternating route on Malahat. Some localized power outages throughout the CRD. Water service in Fulford Harbour area down for 21 households.](#)
- District of Sooke
  - EOC Activated.
- District of Highlands
  - EOC Activated.
- City of Langford

- EOC Activated.
- 20+ properties on alert.
- Central Saanich
  - EOC activated
  - Localized flooding throughout the district. Supporting Public Works with the Brentwood Bay area, liaising with Saanich Peninsula Hospital with resources as needed and status update.

## Key Internet Links:

**Avalanche Canada Weather Forecast** [Drying out at last \(avalanche.ca\)](https://www.avalanche.ca/)

### Emergency Info BC

<https://www.emergencyinfobc.gov.bc.ca>

**BC Hydro Outage Map** <https://www.bchydro.com/power-outages/app/outage-map.html>

### BC River Forecast Centre

<https://www2.gov.bc.ca/gov/content/environment/air-land-water/water/drought-flooding-dikes-dams/river-forecast-centre>

### Drive BC

<https://www.drivebc.ca/mobile/events/index.html>

**Information about Disaster Financial Assistance is available on the DFA web site at**

<http://www.gov.bc.ca/disasterfinancialassistance>

**Environment Canada** [British Columbia - Weather Conditions and Forecast by Locations - Environment Canada](#)

## APPROVED BY:

Janet Adams  
PECC Deputy Director




**Note:** This document may be distributed within your agency. Any distribution outside your agency requires prior approval from the PECC Director

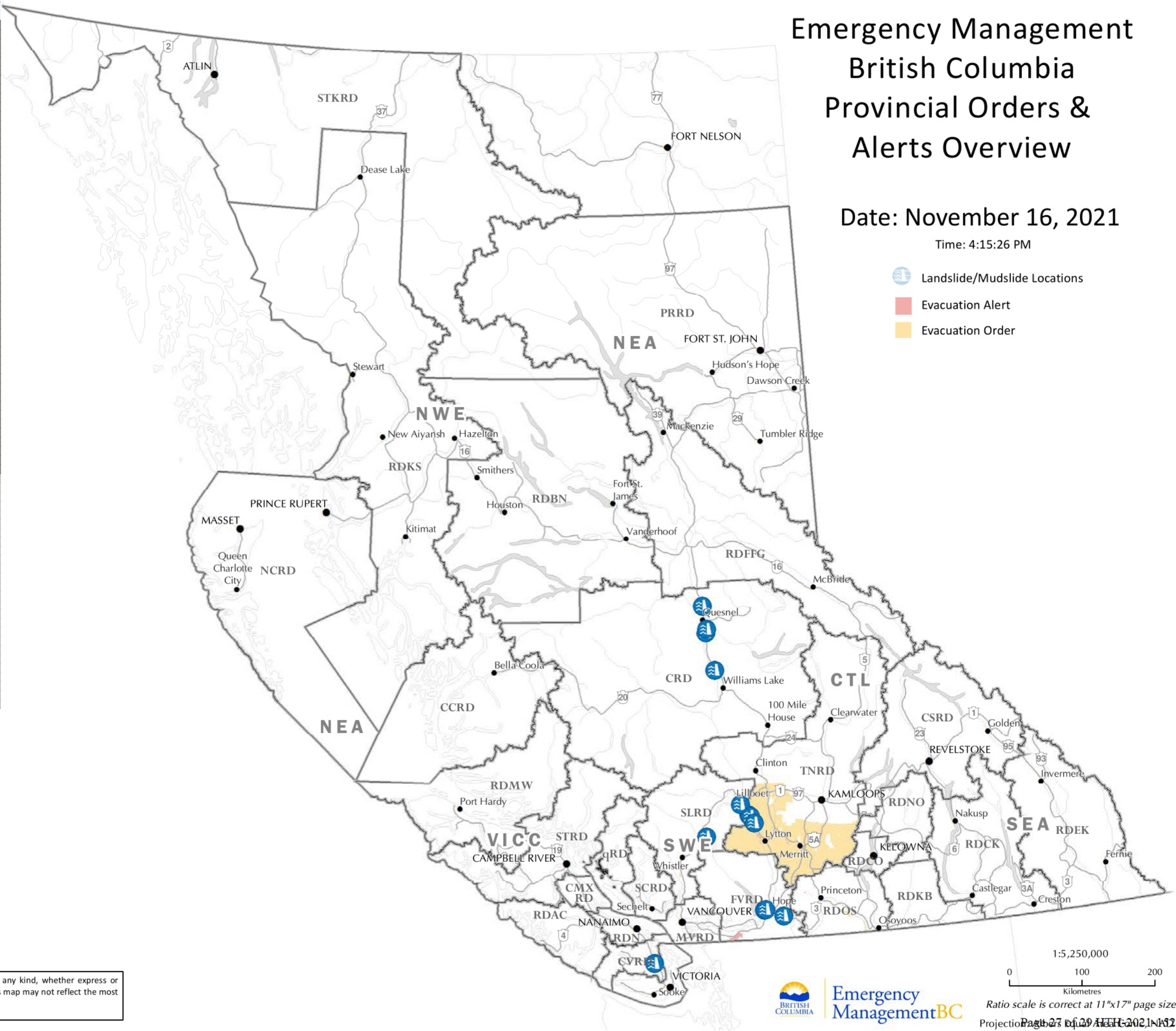
Communities & First Nations Affected by Flooding - November 16, 2021	Communities & First Nations Affected by Flooding - November 16, 2021
Arnold	Nickeyeah 25
Ashnola 10	Nicoelton 6
Aspen Grove	Nicola
Aylechootlook 5	Nicomen 1
Barrowtown	Nkaih 10
Basque	Nocten 19
Bonaparte 3	Nohomeen 23
Boothnie 15	Nooaitch 10
Boston Flats	Nooaitch Grass 9
Brookmere	Norton
Cameron Bar 13	Nuuautin 2
Canford	Nuuautin 2A
Chaparron Creek 6	Nuuautin 2B
Cheakamus	Oregon Jack Creek 2
Chopaka 7 & 8	Papum 27
Chuchhriashchin 5	Papum 27A
Chuchhriashchin 5A	Papum Graveyard 27C
Clapperton	Paul's Basin 2
Colletville	Pegleg 3
Coutlee	Pegleg 3A
Coyle	Pitquah
Dot	Pokheitsk 10
Douglas Lake	Pooeyeth 3
Drynoch	Putkwa 14
Enhalt 11	Quilchena
Falls Creek	Sackum 3
Gladwin	Salmon Lake 7
Grasslands 7	Schikaeltun 16
Gulada 3A	Seah 5
Gwen Lake 3	Seddall
Halhalaeden 14	Semlin
Halhalaeden 14A	Shawniken 4B
Hamilton Creek 2	Shoshost 7
Hay Meadow 1	Shuuchten 15
Humhampt 6	Siska Flat 5B
Humhampt 6A	Skemeoskuanikin 7
Inkluckcheen 21	Skemeoskuanikin 8
Inkluckcheen 21B	Skhpowtz 4
Inklyukinatko 2	Skoona
Joeyaska 2	Skoonkoon 2
Kanaka	Skuppah 2A
Kanaka Bar	Skuppah 2B
Kanaka Bar 1A	Skuppah 3A
Kanaka Bar 2	Skuppah 4
Kingsvale	Skuppah 4A
Kitzowit 20	Skwayaynope 26
Klahkamich 17	Sleetis 6
Klahkowitz 5	South Nepa 7
Kleetlekut 22	Spahomin Creek 4
Kleetlekut 22A	Spatsum
Klickkumcheen 18	Spatsum 11
Kumcheen 1	Spences Bridge
Kupchynalth 1	Spences Bridge 4C
Kykinalko 2	Speous 8
Lasha	Spintum Flat 3
Lish-Leesh-Tum 17	Staiyahanny 8
Logan's 6	Stryen 9
Lower Hat Creek 2	Stump Lake
Lower Nicola	Thompson
Lytton	Toketic
Lytton 13A	Tsaukan 12
Lytton 21A	Tsikahti 8
Lytton 26A	Tuckozap 24
Lytton 27B	Two Mile Creek 16
Lytton 31	Two Mile Creek 16A
Lytton 32	Unpukpulquatum 8
Lytton 33	Upper Hat Creek 1
Lytton 3A	Upper Nepa 6
Lytton 4A	Upper Sumas 6
Lytton 4B	Upper Tsikahti 8A
Lytton 4C	Vye
Lytton 4D	Waihachin
Lytton 4E	Whyeek 4
Lytton 4F	Yarrow
Lytton 5A	Yawaucht 11
Lytton 9A	Zoht 5
Lytton 9B	
Maka 8	
Martel	
Mauvais Rocher 5	
McAbee	
Merritt	
Munroe	
Nananahout 1	
Naykikoult 13	
Nekliptum 1	
Nesikep 6	
Ngwyu'Yemc 36	
Nickel Palm 4	

# Emergency Management British Columbia Provincial Orders & Alerts Overview

Date: November 16, 2021

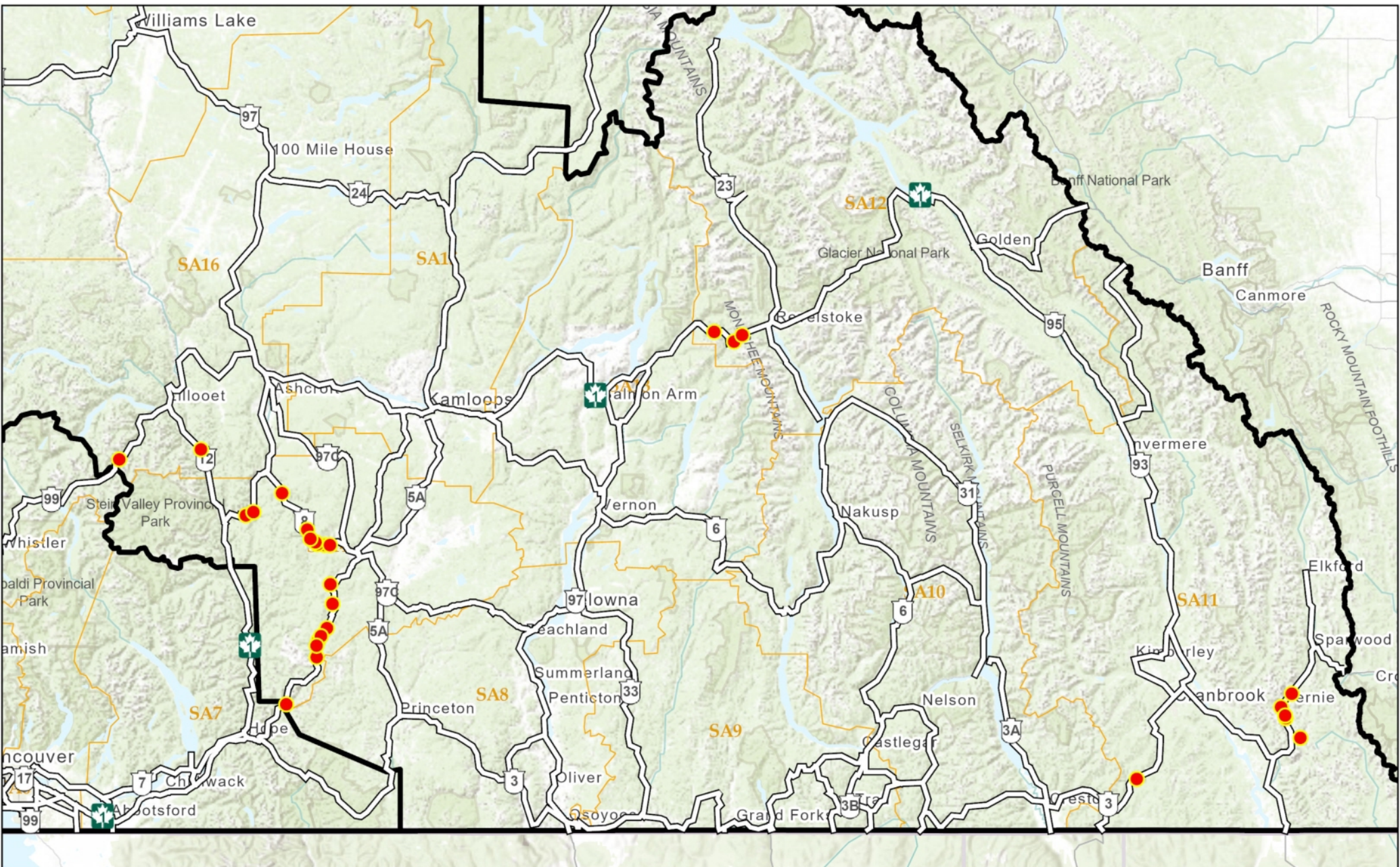
Time: 4:15:26 PM

-  Landslide/Mudslide Locations
-  Evacuation Alert
-  Evacuation Order



**Disclaimer:** This map and all of the information it contains are provided "as is" without warranty of any kind, whether express or implied. Flood, fire and/or COVID-19 information is updated as it is received. Information shown on this map may not reflect the most current flood, fire, or covid situation, and therefore should only be used for reference purposes.





### Road Events

November 16, 2021 6:11 PM

- Event
- MoTI Highway
- Regional Boundary
- Service Area

### Map Location

Page 28 of 29 HTH 2021-15215



[illegible]



## FYI: Update: Atmospheric River & Health System Impacts

From: Barnes, Renee A HLTH:EX <Renee.Barnes@gov.bc.ca>  
To: Parte, Maura HLTH:EX <Maura.Parte@gov.bc.ca>, Hayward, Ross HLTH:EX <Ross.Hayward@gov.bc.ca>  
Sent: November 15, 2021 at 8:43:08 AM Pacific Standard Time

Loopin you in.

**Renee Barnes** (pronouns she/her) 

Executive Coordinator | Office of the Assistant Deputy Minister

Health Services Division | Ministry of Health

Telephone: 250 952-1468 | Cell: s.17

| Email: [Renee.Barnes@gov.bc.ca](mailto:Renee.Barnes@gov.bc.ca)

*We acknowledge all Indigenous peoples on whose territories we work and play. We honour their connection to the land and respect the importance of the diverse teachings, traditions, and practices within these territories*

**Warning:** This email is intended only for the use of the individual or organization to whom it is addressed. It may contain information that is privileged or confidential. Any distribution, disclosure, copying, or other use by anyone else is strictly prohibited. If you have received this in error, please telephone or e-mail the sender immediately and delete the message.

---

**From:** Maxson, Sandra HLTH:EX <Sandra.Maxson@gov.bc.ca>

**Sent:** November 15, 2021 8:30 AM

**To:** Will, Meghan HLTH:EX <Meghan.Will@gov.bc.ca>; Fraser, Christine HLTH:EX <Christine.A.Fraser@gov.bc.ca>;

Barnes, Renee A HLTH:EX <Renee.Barnes@gov.bc.ca>

**Subject:** FW: Update: Atmospheric River & Health System Impacts

**Importance:** High

FYI/ situational awareness. It's... not good out there.

---

**From:** HLTH MOC Duty Officer HLTH:EX <[hlth.dutyofficer@gov.bc.ca](mailto:hlth.dutyofficer@gov.bc.ca)>

**Sent:** November 15, 2021 7:30 AM

**To:** Twyford, Philip HLTH:EX <[Philip.Twyford@gov.bc.ca](mailto:Philip.Twyford@gov.bc.ca)>; Craig, Kevin HLTH:EX <[Kevin.Craig@gov.bc.ca](mailto:Kevin.Craig@gov.bc.ca)>; Galt, Jamie

HLTH:EX <[Jamie.Galt@gov.bc.ca](mailto:Jamie.Galt@gov.bc.ca)>; Pokorny, Peter HLTH:EX <[Peter.Pokorny@gov.bc.ca](mailto:Peter.Pokorny@gov.bc.ca)>; Edwards, Joanne HLTH:EX

<[Joanne.Edwards@gov.bc.ca](mailto:Joanne.Edwards@gov.bc.ca)>; Henry, Bonnie HLTH:EX; Emerson, Brian P HLTH:EX <[Brian.Emerson@gov.bc.ca](mailto:Brian.Emerson@gov.bc.ca)>;

Lavoie, Martin HLTH:EX <[Martin.Lavoie@gov.bc.ca](mailto:Martin.Lavoie@gov.bc.ca)>; Butler, Janice HLTH:EX <[Janice.Butler@gov.bc.ca](mailto:Janice.Butler@gov.bc.ca)>; Anderson,

Kristy HLTH:EX <[Kristy.Anderson@gov.bc.ca](mailto:Kristy.Anderson@gov.bc.ca)>; Fisher, Kiersten D HLTH:EX <[Kiersten.Fisher@gov.bc.ca](mailto:Kiersten.Fisher@gov.bc.ca)>; Rains, Derek

HLTH:EX <[Derek.Rains@gov.bc.ca](mailto:Derek.Rains@gov.bc.ca)>; Maxson, Sandra HLTH:EX <[Sandra.Maxson@gov.bc.ca](mailto:Sandra.Maxson@gov.bc.ca)>; hlth Emergency

Preparedness Staff <[hlthemergprep@Victoria1.gov.bc.ca](mailto:hlthemergprep@Victoria1.gov.bc.ca)>; Heinze, Laura R HLTH:EX <[Laura.Heinze@gov.bc.ca](mailto:Laura.Heinze@gov.bc.ca)>

**Cc:** XT:Lavery, John HLTH:IN <[john.lavery@phsa.ca](mailto:john.lavery@phsa.ca)>; 'Gerry Delorme' <[gerry.delorme@viha.ca](mailto:gerry.delorme@viha.ca)>

**Subject:** Update: Atmospheric River & Health System Impacts

**Importance:** High

Good Morning,

I am expanding the distribution list for these notifications due to increasing impacts from the atmospheric river events in the province.

Please see the information below for your situational awareness – no formal action required at this time. It is anticipated that a potential coordination call between health system partners may be required later today as first light offers further insight into status of roads, patient transport, etc.

Following overnight events, **next steps for the Provincial Health Duty Officer** include participation in the following coordination calls and providing support to the health system as appropriate:

- FHA EOC Coord Call – 0800 organized by HEMBC
- EMBC Coord Call – 0900 organized by Southwest Provincial Regional Emergency Operations Centre (PREOC)

Items of note are in blue

**Weather Situation**

- Heavy rain and strong winds anticipated to continue into the (late) afternoon on Monday 15 Nov in the Lower Mainland/Fraser region, with possibility of some snow at the end due to a drop in freezing level elevation
- Significant flooding impacts to communities in the Interior – Merritt and Princeton

**Known General Impacts of Note (as of 0700)**

- Municipalities in the Fraser Valley into the Interior have been activating their Emergency Operations Centres.
  - Chilliwack, Hope, Pitt Meadows, City of Langley, Fraser Valley Regional District, District of Kent, Fernie and Abbotsford activated their EOCs in the SWE region.

- Regional District of Okanagan-Similkameen, Tulameen and Princeton activated their EOCs in the CTL region.

- States of local emergency, as well as evacuation alerts and orders have been issued in various communities in the Southwest and Central regions.
- Many [Highway closures](#) and advisories are in effect due to localized flooding on most major and minor routes.

#### **Known Health System Impacts (as of 0600)**

##### **Overall**

- HHR is a significant concern – staff at sites are being asked/told to stay longer to ensure appropriate levels at sites; challenges with transport are impacting ability of staff to get to work.
- BCEHS is actively working (as per standard operations with road closures) with RCMP, SAR and other transport partners to manage detours and access high-acuity patients. No asks for assistance at this time.

##### **Merritt (IHA):**

- The sewage treatment plant will be locked up and the City is looking at a [potential evacuation of 7800 people due to a lack of clean water and sewage treatment](#).
- HEMBC IHA is already working on planning the movement of patients from Gillis House, but may be required to move around 3 bedded facilities, including the hospital and a P3 should the situation continue to deteriorate.
- There are emergency response teams for IHA are being established in Merritt and Kamloops.
- Disaster Psychosocial Services have been requested by Merritt ESS for 118 registered evacuees. Ability to fill the request is pending.

##### **Princeton (IHA)**

- Boil water notice in effect. Dike has breached and the downtown core is flooded.

##### **Hope (FHA):**

- Fraser Canyon Hospital is still on a code orange.
- 1 patient transfer by air is pending BCEHS ability to fly, status of movement anticipated around 0730.
- Hospital is off the generator, power restored to parts of Hope.
- Cardiac services compromised due to power outages impacting equipment.
- HEMBC FHA is in talks with regional emergency management services about the potential to fly in essential staff and supplies to the site due to road closures.

##### **Chilliwack (FHA):**

- Impacts to surgical suite for Chilliwack at this time due to knock on impacts of these weather events.
- Code orange alert in Chilliwack hospital at this time.
- Staff are being (re)directed to the site to support staffing levels.

#### **Potential Concerns/Issues for Ongoing Monitoring**

- General public showing up at hospitals for shelter, due to power outage impacts in communities.
- Possible boxing-in of health care facilities due to road closures, incl. access for BCEHS and staff accessing sites.
- Challenges for staff to commute due to road closures and weather.
- Access to home health clients for staff, and the potential for clients to be isolated or evacuated depending on personal residence.
- Due to predicted high winds tomorrow in the Lower Mainland, concern about possible falling trees impacting transportation routes and increased risk of injuries.

Further updates of significance will be distributed as they are received and as the event develops.

Thank you,

Maria

Maria Przydatek

Provincial Health Duty Officer

**24/7 Duty Officer at 250-686-6061 or [hlth.dutyofficer@gov.bc.ca](mailto:hlth.dutyofficer@gov.bc.ca)**

**From:** HLTH MOC Duty Officer HLTH:EX

**Sent:** November 15, 2021 1:52 AM

**To:** Twyford, Philip HLTH:EX <[Philip.Twyford@gov.bc.ca](mailto:Philip.Twyford@gov.bc.ca)>; Craig, Kevin HLTH:EX <[Kevin.Craig@gov.bc.ca](mailto:Kevin.Craig@gov.bc.ca)>; Galt, Jamie HLTH:EX <[Jamie.Galt@gov.bc.ca](mailto:Jamie.Galt@gov.bc.ca)>

**Cc:** XT:Lavery, John HLTH:IN <[john.lavery@phsa.ca](mailto:john.lavery@phsa.ca)>

**Subject:** Update: Heavy Rainfall Fraser Health Region



Good Evening,

For your situational awareness – no action required at this time.

Following this evening's events, **next steps for the Provincial Health Duty Officer** include participation in the following coordination calls and providing support to the health system as appropriate:

- FHA EOC Coord Call – 0600 organized by HEMBC
- EMBC Coord Call – 0900 organized by Southwest Provincial Regional Emergency Operations Centre (PREOC)

Below is a brief update – items of note in blue.

#### **Weather Situation**

- The River Forecast Centre issued [a Flood Watch](#) for several waterways in the Fraser region, as rivers have risen rapidly from rainfall since yesterday.
  - Mudslides, rockslides, and water pooling have been reported throughout the region
- Additional rises are expected as Environment and Climate Change Canada have continued [rainfall warnings](#) in effect across the region, expected to last until Monday afternoon
- [Heavy rain and strong winds anticipated to continue into the \(late\) afternoon on Monday 15 Nov in the Lower Mainland/Fraser region, with possibility of some snow at the end due to a drop in freezing level elevation.](#)

#### **Known General Impacts of Note (as of 2330)**

- 6 Emergency Operations Centres activated at this time to monitor flooding, impacts and assist homeowners - Chilliwack, Hope, Abbotsford, the Fraser Valley Regional District, City of Fernie, and the Regional District of Okanagan-Similkameen.
- [States of local emergency, as well as evacuation alerts and orders have been issues in various communities in the Southwest and Central regions.](#)
- Many [Highway closures](#) and advisories are in effect due to localized flooding on most major and minor routes.
- [Community of Hope \(area of key concern\)](#)
  - [Grace Baptist Church is providing shelter to travellers/locals.](#)
  - [Hospital is providing shelter to medically frail public.](#)
  - [Due to power outage community EOC is located at the hospital at this time, with the potential to move to another site when possible.](#)

#### **Known Health System Impacts (as of 2015)**

- FH leadership aware, monitoring, and pre-emptive reaching out to programs, such as home health.
- Staffing challenges within Fraser Health being reported.
- Fraser Canyon Hospital and Fraser Hope Lodge experienced a power outage as part of an outage impacting 10k residences.
  - [A code orange has been activated for the sites \(see below\).](#)
  - [Operating on back up power at this time \(72 hrs fuel supply\) with the potential for further service impacts at the site.](#)
  - [BC Hydro is aware and resolution time is unknown.](#)
  - [Patient transfers are impacted by the weather, and the site and BCEHS, along with other parties, are resolving.](#)
- [BCEHS is actively working \(as per standard operations with road closures\) with RCMP, SAR and other transport partners to manage detours and access high-acuity patients. No asks for assistance at this time.](#)

#### **Potential Concerns/Issues for Ongoing Monitoring**

- General public showing up at hospitals for shelter.
- Possible boxing-in of health care facilities due to road closures, incl. access for BCEHS and staff accessing sites.
- Challenges for staff to commute due to road closures and weather.
- Access to home health clients for staff, and the potential for clients to be isolated or evacuated depending on personal residence .
- Due to predicted high winds tomorrow in the Lower Mainland, concern about possible falling trees impacting transportation routes and increased risk of injuries.

Updates will continue to be provided as the event develops.

Thank you,

Maria

---

**From:** HLTH MOC Duty Officer HLTH:EX

**Sent:** November 14, 2021 11:06 PM



**To:** Twyford, Philip HLTH:EX <[Philip.Twyford@gov.bc.ca](mailto:Philip.Twyford@gov.bc.ca)>; Craig, Kevin HLTH:EX <[Kevin.Craig@gov.bc.ca](mailto:Kevin.Craig@gov.bc.ca)>; Galt, Jamie HLTH:EX <[Jamie.Galt@gov.bc.ca](mailto:Jamie.Galt@gov.bc.ca)>

**Cc:** XT:Lavery, John HLTH:IN <[john.lavery@phsa.ca](mailto:john.lavery@phsa.ca)>

**Subject:** RE: FYI: Heavy Rainfall Fraser Health Region

Good Evening,

For your situational awareness – no action required at this time.

Further to coordination calls with FH leadership at the site, Fraser Canyon Hospital has just activated a stage 3 (full) code orange. The small size of the site influences this decision.

Impacts influencing decision:

- Staffing challenges
- Road closures
- Public seeking shelter at the health facilities; power outage affecting the town that has limited the local authorities ability to establish warming sites. No warming sites are reported as established at this time.

The site is anticipated to be issuing situation reports.

The Provincial Health Duty Officer will continue to monitor the event and participate in coordination and provide support. Further coordination calls are anticipated at 2300 with EMBC.

Thank you,

Maria

---

**From:** HLTH MOC Duty Officer HLTH:EX

**Sent:** November 14, 2021 8:58 PM

**To:** Twyford, Philip HLTH:EX <[Philip.Twyford@gov.bc.ca](mailto:Philip.Twyford@gov.bc.ca)>; Craig, Kevin HLTH:EX <[Kevin.Craig@gov.bc.ca](mailto:Kevin.Craig@gov.bc.ca)>; Galt, Jamie HLTH:EX <[Jamie.Galt@gov.bc.ca](mailto:Jamie.Galt@gov.bc.ca)>

**Cc:** XT:Lavery, John HLTH:IN <[john.lavery@phsa.ca](mailto:john.lavery@phsa.ca)>

**Subject:** FYI: Heavy Rainfall Fraser Health Region

**Importance:** High

Good evening,

The following update is for your situational awareness – no action is required at this time.

A coordination call was held at 2000 today with HEMBC, BCEHS and the Provincial Health Duty Officer – minimal (trending towards escalation) impacts from the health system reported at this time.

**For next steps**, the Provincial Health Duty Officer is monitoring the situation, engaged in coordination, and will provide updates of note as required.

Still to be determined there may be a possible coordination call for 21:30 for FHA leadership to discuss the situation being organized by HEMBC.

#### **Weather Situation**

- The River Forecast Centre issued [a Flood Watch](#) for several waterways in the Fraser region, as rivers have risen rapidly from rainfall since yesterday.
  - Mudslides, rockslides, and water pooling have been reported throughout the region
- Additional rises are expected as Environment and Climate Change Canada have continued [rainfall warnings](#) in effect across the region, expected to last until Monday afternoon
- Weather advisories (rain, snow, wind) and Flood Watches are in effect for much of the Lower Mainland, Vancouver Island and into parts of the Interior.

#### **Known General Impacts of Note (as of 2015)**

- 6 Emergency Operations Centres activated at this time to monitor flooding, impacts and assist homeowners - Chilliwack, Hope, Abbotsford, the Fraser Valley Regional District, City of Fernie, and the Regional District of Okanagan-Similkameen.
- In Abbotsford, Emergency Support Services is responding to displacement of people due to flooding from personal residences.
- Many [Highway closures](#) and advisories are in effect due to localized flooding on most major and minor routes.

#### **Known Health System Impacts (as of 2015)**

- FH leadership aware, monitoring, and pre-emptive reaching out to programs, such as home health.
- Staffing challenges within Fraser Health being reported already.
- Fraser Canyon Hospital and Fraser Hope Lodge experienced a power outage as part of an outage impacting 10k residences.
  - They are operating on back up power at this time (72 hrs fuel supply) with the potential for further service impacts at the site.

- Operating on a code gray, no issues of note reported at this time.
- BC Hydro is aware and resolution time is unknown.
- BCEHS is actively working (as per standard operations with road closures) with RCMP, SAR and other transport partners to manage detours and access high-acuity patients. No asks for assistance at this time.

**Potential Concerns/Issues for Ongoing Monitoring**

- General public showing up at hospitals for shelter.
- Possible boxing-in of health care facilities due to road closures, incl. access for BCEHS and staff accessing sites.
- Challenges for staff to commute due to road closures and weather.
- Access to home health clients for staff, and the potential for clients to be isolated or evacuated depending on personal residence .
- Due to predicted high winds tomorrow in the Lower Mainland, concern about possible falling trees impacting transportation routes and increased risk of injuries.

Thank you,

Maria

Maria Przydatek

Provincial Health Duty Officer

**24/7 Duty Officer at 250-686-6061 or [hlth.dutyofficer@gov.bc.ca](mailto:hlth.dutyofficer@gov.bc.ca)**

Good Evening,

Please find attached the initial Health System Atmospheric River Situation Report for today, 15 November 2021.

Note, this is an abridged situation report and does not include full details as aggregated from Health Sector partners.



Please refer to the previous email updates sent today that contained more detailed information or reach out to the Provincial Health Duty Officer or undersigned for more information if you did not receive those updates. Email updates on the developing situation are likely tomorrow, 16 November 2021.

The Ministry of Health will deploy a liaison officer in-person to the EMBC Provincial Operations Coordination Centre for 16 November 2021. That individual can be reached at 250-686-6061 or [hlth.dutyofficer@gov.bc.ca](mailto:hlth.dutyofficer@gov.bc.ca)

Any questions can be directed to myself.

Thank you,

Jamie

**Jamie Galt**, CD, MA

Director

Emergency Management Unit

Ministry of Health

Office: (778) 698-5823

Cell: s.17

PO Box 9639 Stn Prov Govt, Victoria BC V8W 9P1

**If this is an emergency impacting the provincial health system, please contact our 24/7 Duty Officer at 250-686-6061 or [hlth.dutyofficer@gov.bc.ca](mailto:hlth.dutyofficer@gov.bc.ca)**

*Warning: This email is intended only for the use of the individual or organization to whom it is addressed. It may contain information that is privileged or confidential. Any distribution, disclosure, copying, or other use by anyone else is strictly prohibited. If you have received this in error, please telephone or e-mail the sender immediately and delete the message.*

*I respectfully acknowledge the unceded territories of the Songhees, Esquimalt and WSÁNEC peoples'.*



## OVERVIEW

### PURPOSE:

- The provincial health system is currently experiencing significant impacts from an Atmospheric River weather event
- To ensure situational awareness across the provincial health system response structure, event updates have been provided throughout the day. This situation report summarizes key impacts and risks

**DATE ISSUED: Monday, November 15, 2021**

**PREPARED BY: MoH EMU**

**REPORTING PERIOD: Information current as of 2100hrs on Monday 15 Nov 2021**

**NEXT REPORT: To be determined**

**HECC ACTIVATION LEVEL: 1**

### NOTE:

Given the dynamic nature of the provincial weather situation, the following information is subject to change after this report is distributed. Any significant developments will be communicated sooner as necessary.

### SITUATION REPORT SECTIONS:

HIGHLIGHTS	SUPPORTING INFORMATION
<ul style="list-style-type: none"> <li>• PROVINCIAL SITUATION SUMMARY:</li> <li>• SIGNIFICANT HEALTH SYSTEM IMPACTS</li> <li>• HEALTH SYSTEM RISKS</li> </ul>	<ul style="list-style-type: none"> <li>• HEALTH AUTHORITY SUMMARIES</li> <li>• EXTERNAL AGENCY SUPPORTING MATERIAL</li> </ul>

### PROVINCIAL HEALTH SYSTEM CONTACTS:

- Emergency inquiries impacting the BC Provincial Health System can be directed to the 24/7 Provincial Health Duty Officer (PHDO):
  - [Hlth.dutyofficer@gov.bc.ca](mailto:Hlth.dutyofficer@gov.bc.ca)  
250-686-6061
- The following individuals are providing provincial level coordination:
  - John Lavery, Executive Director Health Emergency Management BC (HEMBC)  
[John.lavery@phsa.ca](mailto:John.lavery@phsa.ca)
  - Gerry Delorme, Director Provincial Clinical Operations, HEMBC  
[gerry.delorme@viha.ca](mailto:gerry.delorme@viha.ca)
  - <sup>s.17</sup> Jamie Galt, Director Emergency Management Unit  
[Jamie.galt@gov.bc.ca](mailto:Jamie.galt@gov.bc.ca)  
<sup>s.17</sup>

## PROVINCIAL SITUATION

### PROVINCIAL SITUATION SUMMARY:

- An extreme atmospheric weather event continues to impact the province in the form of significant precipitation and warming resulting in landslides, mudslides, flooding, and power outages
- **The situation remains dynamic and has not currently stabilized even with a general improvement in weather throughout the day**
- Several communities are under evacuation orders and alerts including the Town of Merritt (*See EMBC Regional SITREPs for details on community level orders and alerts*)
- Transportation corridors have been significantly impacted with complete washouts reported on Hwys 1,3,7. Similarly, rail lines have been impacted with assessments on-going
- Weather has hampered rescue operations of trapped and isolated motorists along routes impacted by debris flows

### WEATHER UPDATE:

- **Numerous precipitation records were broken today across the Southwestern and interior regions. Awaiting official confirmation of totals. Some regions will have received 150-275mm of precipitation in less than 24hours**
- The rain event was followed by a cold front that brought winds of 70-90km/h on Vancouver Island and Southwestern BC. The cold front ushered in cooler temperatures bringing snowfall warnings to several Interior regions and mountain passes
- General improving trend with dry and cool weather prevailing on Monday night and Tuesday, and Arctic air from the Yukon will invade Fort Nelson, the Peace and the North Rockies. Conditions will remain dry across most of the province Wednesday, except in the North where clouds will increase, followed by light precipitation. Increasing moisture from another Pacific system could reach Vancouver Island and the South Coast and Cascade Mountains late Thursday.

## SIGNIFICANT HEALTH SYSTEM IMPACTS

- All Interior Health facilities within the community of Merritt have been or are in the process of being evacuated (details contained in IH Sitrep)
- Community of Hope remains cut-off from outside communities with key transportation links severed
- BCEHS is supporting tactical evacuations as required to assist isolated and trapped motorists on BC Hwys
- Weather has grounded most rotary wing transport within impacted areas limiting BCEHS air resources to impacted sites (Hope, Merritt). This situation is expected to improve on 16 Nov
- Power outages are impacting multiple sites in multiple regions. HAs are reporting no major issues with back-up power solutions in place
- HHR staffing impacts have been observed in HAs but no significant disruptions reported
- Resupply of isolated communities (Hope) with relief staff and resources are being planned

### ASSESSED PROVINCIAL HEALTH SYSTEM RISKS

The Emergency Management Unit has assessed the following risks to the provincial health system:

1. Human Health Resourcing
  - Inability for staff to access places of work due to short-term to long-term route closures
  - Exacerbates already tenuous HHR situation
2. Supply chain impacts
  - Short-term: Inability to access isolated communities with pharmaceuticals, medical supplies
  - Long-term: Sustained impacts to supply chain network
3. Public Health complications
  - COVID-19 transmission among evacuees
  - Application of public health orders
  - Flooding complications including impacts to drinking water supplies

### HEALTH AUTHORITY SUMMARY:

Due to dynamic and evolving situation no Health Authority summary information is available for this reporting period. Specific information can be requested direct from Health Authorities, PHSA, BCEHS or the Provincial Health Duty Officer.

Detailed information for this event has been received from the following health sector partners:

- Fraser Health Authority
- Interior Health Authority
- Vancouver Island Health Authority
- BCEHS

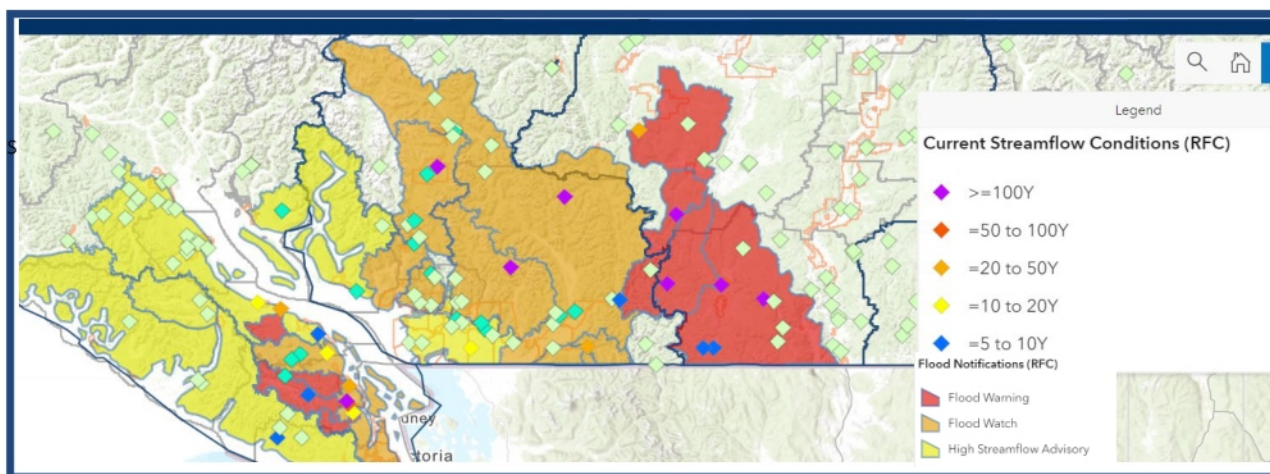


**EXTERNAL AGENCY SUPPORTING MATERIAL:**

**Summary of Transportation Impacts:**



[BC River Forecast Centre](#): Flood warning and advisory map as of 15 Nov 2021 (includes streamflow conditions)



[Environment and Climate Change Canada](#): Weather Alerts (as of 2200hrs 15 Nov 2021). Click link for most current weather alerts



## FW: Initial Report: Abbotsford Evacuation Order

---

From: Edwards, Joanne HLTH:EX <Joanne.Edwards@gov.bc.ca>  
To: Halicki, Ashley HLTH:EX <Ashley.Halicki@gov.bc.ca>  
Sent: December 23, 2021 1:42:10 PM PST

---

**From:** HLTH MOC Duty Officer HLTH:EX <hlth.dutyofficer@gov.bc.ca>

**Sent:** November 16, 2021 7:08 AM

**To:** Twyford, Philip HLTH:EX <Philip.Twyford@gov.bc.ca>; Craig, Kevin HLTH:EX <Kevin.Craig@gov.bc.ca>; Galt, Jamie HLTH:EX <Jamie.Galt@gov.bc.ca>; Pokorny, Peter HLTH:EX <Peter.Pokorny@gov.bc.ca>; Edwards, Joanne HLTH:EX <Joanne.Edwards@gov.bc.ca>; Henry, Bonnie HLTH:EX <Bonnie.Henry@gov.bc.ca>; Emerson, Brian P HLTH:EX <Brian.Emerson@gov.bc.ca>; Lavoie, Martin HLTH:EX <Martin.Lavoie@gov.bc.ca>; Butler, Janice HLTH:EX <Janice.Butler@gov.bc.ca>; Anderson, Kristy HLTH:EX <Kristy.Anderson@gov.bc.ca>; Fisher, Kiersten D HLTH:EX <Kiersten.Fisher@gov.bc.ca>; Maxson, Sandra HLTH:EX <Sandra.Maxson@gov.bc.ca>; hlth Emergency Preparedness Staff <hlthemergprep@Victoria1.gov.bc.ca>; Heinze, Laura R HLTH:EX <Laura.Heinze@gov.bc.ca>; Parte, Maura HLTH:EX <Maura.Parte@gov.bc.ca>; HLTH Health Issues HLTH:EX <HealthIssues@gov.bc.ca>; Guerrero, Thomas HLTH:EX <Thomas.Guerrero@gov.bc.ca>; Ferrier, Jeffrey GCPE:EX <Jeffrey.Ferrier@gov.bc.ca>; Baade, Leah J HLTH:EX <Leah.Baade@gov.bc.ca>; Sterloff, Trish HLTH:EX <Trish.Sterloff@gov.bc.ca>; Russo, Geneen HLTH:EX <Geneen.Russo@gov.bc.ca>; Fishwick, David HLTH:EX <David.Fishwick@gov.bc.ca>; van der Leer, Gerrit HLTH:EX <Gerrit.vanderLeer@gov.bc.ca>

**Subject:** Initial Report: Abbotsford Evacuation Order

The City of Abbotsford has issued an Evacuation Order for an area formerly under Alert in East Abbotsford (Sumas Prairie).

- The dike system has begun to overflow.
- The Order will affect a few thousand people, however the exact number is unknown at this time.
- Due to the closure of Highway 1 between Hwy 11 and No. 3 Rd, evacuees will likely have to evacuate towards Chilliwack.
- Chilliwack and Central Fraser Valley Search and Rescue have been activated to assist with evacuations.

Further details are not known at this time. The duty officer will continue to monitor the situation and provide updates as they become available.

Jonathan carroll

Provincial Health Duty Officer

**24/7 Duty Officer at 250-686-6061 or [hlth.dutyofficer@gov.bc.ca](mailto:hlth.dutyofficer@gov.bc.ca)**



## FW: Update 2: Atmospheric River & Health System Impacts

---

From: Edwards, Joanne HLTH:EX <Joanne.Edwards@gov.bc.ca>  
To: Halicki, Ashley HLTH:EX <Ashley.Halicki@gov.bc.ca>  
Sent: December 23, 2021 1:42:32 PM PST

**From:** HLTH MOC Duty Officer HLTH:EX <hlth.dutyofficer@gov.bc.ca>

**Sent:** November 16, 2021 12:26 PM

**To:** Twyford, Philip HLTH:EX <Philip.Twyford@gov.bc.ca>; Craig, Kevin HLTH:EX <Kevin.Craig@gov.bc.ca>; Galt, Jamie HLTH:EX <Jamie.Galt@gov.bc.ca>; Pokorny, Peter HLTH:EX <Peter.Pokorny@gov.bc.ca>; Edwards, Joanne HLTH:EX <Joanne.Edwards@gov.bc.ca>; Henry, Bonnie HLTH:EX <Bonnie.Henry@gov.bc.ca>; Emerson, Brian P HLTH:EX <Brian.Emerson@gov.bc.ca>; Lavoie, Martin HLTH:EX <Martin.Lavoie@gov.bc.ca>; Butler, Janice HLTH:EX <Janice.Butler@gov.bc.ca>; Anderson, Kristy HLTH:EX <Kristy.Anderson@gov.bc.ca>; Fisher, Kiersten D HLTH:EX <Kiersten.Fisher@gov.bc.ca>; Maxson, Sandra HLTH:EX <Sandra.Maxson@gov.bc.ca>; hlth Emergency Preparedness Staff <hlthemergprep@Victoria1.gov.bc.ca>; Heinze, Laura R HLTH:EX <Laura.Heinze@gov.bc.ca>; Parte, Maura HLTH:EX <Maura.Parte@gov.bc.ca>; HLTH Health Issues HLTH:EX <HealthIssues@gov.bc.ca>; Guerrero, Thomas HLTH:EX <Thomas.Guerrero@gov.bc.ca>; Ferrier, Jeffrey GCPE:EX <Jeffrey.Ferrier@gov.bc.ca>; Baade, Leah J HLTH:EX <Leah.Baade@gov.bc.ca>; Sterloff, Trish HLTH:EX <Trish.Sterloff@gov.bc.ca>; Russo, Geneen HLTH:EX <Geneen.Russo@gov.bc.ca>; Fishwick, David HLTH:EX <David.Fishwick@gov.bc.ca>; van der Leer, Gerrit HLTH:EX <Gerrit.vanderLeer@gov.bc.ca>

**Cc:** XT:Lavery, John HLTH:IN <john.lavery@phsa.ca>; 'Gerry Delorme' <gerry.delorme@viha.ca>; Blessin, Scott [PHSA] <Scott.Blessin@phsa.ca>

**Subject:** Update 2: Atmospheric River & Health System Impacts

Good Afternoon,

Significant impacts due to extreme weather events continue to be experienced across the B.C. health system. The Emergency Management Unit has a health sector liaison onsite at EMBCs Provincial Emergency Coordination Centre and is actively coordinating with Health Emergency Management BC staff across regions.

**The Situation is beginning to stabilize, but remains extremely dynamic.**

*The below updates are not likely to be exhaustive, and may have changed since last reported.*

### **Weather Update**

- Rain across the province has mostly subsided.
- BC will be sunny and cool under the high-pressure ridge. Some clouds will linger over the Rockies. The Northwest mountain range will see increasing cloud and precipitation ahead of an advancing warm front.
- Isolated showers are expected across the province, but no further heavy rain has been forecast.
- A heavy rain system is expected to move through Washington and Oregon towards the weekend, but should not impact BC.
- Moderately cold, conditions may lead to snowfall conditions developing.
- **Winter Storm Warning in effect for:** Haines Road – Haines Junction to Pleasant Camp, and South Klondike Highway - Carcross to White Pass.
- **Snowfall Warning in effect for:** Coquihalla Highway - Hope to Merritt, and North Coast – inland sections.
- Flood warning, watches and advisories continue on many rivers, tributaries across the southern part of the province.

### **Overall Emergency Management Updates**

- EMBC's Provincial Emergency Coordination Centre (PECC) has stood up as of 0830 – Health Liaison is on-site
- EMBC activated its Southwest, Central and Vancouver Island Provincial Regional Emergency Operations Centres and are coordinating with municipalities, regional districts and first nation communities
- Significant impacts to MOTI infrastructure throughout Vancouver Island, Lower Mainland, Interior. Long-term impacts expected on several major routes. Refer to Drive BC for updates.
  - As flood waters recede in some areas, some roads are expected to re-open tonight.
  - Roads impacted by flooding in the Abbotsford area, and those impacted by large wash-outs (such as the Coquihalla highway) are expected to be inaccessible for at least 2-4 days.
- Ongoing expansions to evacuation alerts/orders in Abbotsford
- Significant [power outages](#) impacting province.
- EMBC has approved Disaster Financial Assistance for flooding in the Vancouver Island & Central Coast, Southwest, and Central regions of the province, including all First Nations communities, electoral areas, and municipalities within these areas.

## Health System Impacts as of 1145

### General

- HEMBC coordinating regional EOCs as required
- Weather and road closures are continuing to impact HHR and patient/supply transport options, incl. pharmaceuticals, lab services, etc.
- Facility evacuations continue to take place within their respective HAs
- Disaster Psychosocial Services are deployed to Abbotsford.
- BCEHS is working in support of patient and supply transportation

### FHA

#### Abbotsford

- Abbotsford Regional Hospital is only reporting minor staffing challenges at this time.

#### Chilliwack

- Receiving evacuees from the health system.
- Remains cut off from highway access.
- Work is underway to transport renal patients out of the impacted area to the lower mainland to receive care.
- A 25 bed Mental Health site was evacuated to Chilliwack, residents are currently being relocated.

#### Hope

- City remains cut-off from Lower Mainland.
- Rail transport in late yesterday evening of essential staff and supplies.
- Air transport coordination continues to supply both health facilities and emergency support services.
- Approximately 1100 people from outside of the region are currently stranded in Hope.
- Work is underway to transport renal patients out of the impacted area to the lower mainland to receive care.

### IHA

#### Princeton

- Princeton Hospital is evacuating to Penticton.

#### Island Health

- Ferry transport coordination continues to support the timely movement of lab and medical samples between sites due to Malahat impacts.

### Next Steps

The Emergency Management Unit will aim to develop a health system situational report for dissemination by **2100 hrs 16 November**.

Significant updates will be provided during the day, as necessitated by the situation.

Please connect with the Provincial Health Duty Officer at 260-686-6061, for any immediate issues or concerns.

Jonathan Carroll

Provincial Health Duty Officer

**24/7 Duty Officer at 250-686-6061 or [hlth.dutyofficer@gov.bc.ca](mailto:hlth.dutyofficer@gov.bc.ca)**



## **FW: Update 3: Flooding Impacts (Atmospheric River & Health System Impacts)**

From: Edwards, Joanne HLTH:EX <Joanne.Edwards@gov.bc.ca>  
To: Halicki, Ashley HLTH:EX <Ashley.Halicki@gov.bc.ca>  
Sent: December 23, 2021 1:43:13 PM PST

**From:** HLTH MOC Duty Officer HLTH:EX <hlth.dutyofficer@gov.bc.ca>

**Sent:** November 16, 2021 9:22 PM

**To:** Twyford, Philip HLTH:EX <Philip.Twyford@gov.bc.ca>; Craig, Kevin HLTH:EX <Kevin.Craig@gov.bc.ca>; Galt, Jamie HLTH:EX <Jamie.Galt@gov.bc.ca>; Pokorny, Peter HLTH:EX <Peter.Pokorny@gov.bc.ca>; Edwards, Joanne HLTH:EX <Joanne.Edwards@gov.bc.ca>; 'Henry, Bonnie HLTH:EX' <Bonnie.Henry@gov.bc.ca>; Emerson, Brian P HLTH:EX <Brian.Emerson@gov.bc.ca>; Lavoie, Martin HLTH:EX <Martin.Lavoie@gov.bc.ca>; Butler, Janice HLTH:EX <Janice.Butler@gov.bc.ca>; Anderson, Kristy HLTH:EX <Kristy.Anderson@gov.bc.ca>; Fisher, Kiersten D HLTH:EX <Kiersten.Fisher@gov.bc.ca>; Maxson, Sandra HLTH:EX <Sandra.Maxson@gov.bc.ca>; hlth Emergency Preparedness Staff <hlthemergprep@Victoria1.gov.bc.ca>; Heinze, Laura R HLTH:EX <Laura.Heinze@gov.bc.ca>; Parte, Maura HLTH:EX <Maura.Parte@gov.bc.ca>; HLTH Health Issues HLTH:EX <HealthIssues@gov.bc.ca>; Guerrero, Thomas HLTH:EX <Thomas.Guerrero@gov.bc.ca>; Ferrier, Jeffrey GCPE:EX <Jeffrey.Ferrier@gov.bc.ca>; Baade, Leah J HLTH:EX <Leah.Baade@gov.bc.ca>; Sterloff, Trish HLTH:EX <Trish.Sterloff@gov.bc.ca>; Russo, Geneen HLTH:EX <Geneen.Russo@gov.bc.ca>; Fishwick, David HLTH:EX <David.Fishwick@gov.bc.ca>; van der Leer, Gerrit HLTH:EX <Gerrit.vanderLeer@gov.bc.ca>

**Cc:** Blessin, Scott [PHSA] <Scott.Blessin@phsa.ca>; XT:Lavery, John HLTH:IN <john.lavery@phsa.ca>; 'Gerry Delorme' <gerry.delorme@viha.ca>

**Subject:** Update 3: Flooding Impacts (Atmospheric River & Health System Impacts)

Due to the limited number of changes over the last 24 hours, this update is being sent in lieu of a Health System Situation report.

Significant impacts due to extreme weather events continue to be experienced across the B.C. health system. The Emergency Management Unit has a health sector liaison onsite at EMBCs Provincial Emergency Coordination Centre and is actively coordinating with Health Emergency Management BC staff across regions.

**The Situation is beginning to stabilize, but remains extremely dynamic.**

*The below updates are not likely to be exhaustive, and may have changed since last reported.*

**New information is in blue**

### **Weather Update**

- Rain across the province has mostly subsided.
- Slight showers expected for many areas into the later part of the week, but no significant rains.
- **Heavy snow is expected early next week along the north and central coast of the province.**
- **Interior is experiencing cold and dry conditions and may experience road ice in some areas, potentially further impacting travel difficulties.**
- Moderately cold, conditions may lead to snowfall conditions developing.
- **Winter Storm Warning in effect for:** Haines Road – Haines Junction to Pleasant Camp, and South Klondike Highway - Carcross to White Pass.
- **Snowfall Warning in effect for:** Coquihalla Highway - Hope to Merritt, and North Coast – inland sections.
- Flood warning, watches and advisories continue on many rivers, tributaries across the southern part of the province.

### **Overall Emergency Management Updates**

- **The Barrowtown Pump Station, which services the Sumas Prairie area of Abbotsford, has failed. Residents are being advised to abandon all attempts to save their livestock and leave evacuation areas immediately.**
- EMBC's Provincial Emergency Coordination Centre (PECC) has stood up as of 0830 – **Health Liaison is on-site**
- EMBC activated its Southwest, Central and Vancouver Island Provincial Regional Emergency Operations Centres and are coordinating with municipalities, regional districts and first nation communities
- **Significant impacts to MOTI infrastructure throughout Vancouver Island, Lower Mainland, Interior. Long-term impacts expected on several major routes. Refer to Drive BC for updates.**
- **Ongoing expansions to evacuation alerts/orders in Abbotsford**
- Significant **power outages** impacting province.
- EMBC has approved Disaster Financial Assistance for flooding in the Vancouver Island & Central Coast, Southwest, and Central regions of the province, including all First Nations communities, electoral areas, and municipalities within these areas.



## Health System Impacts as of 1145

### General

- Highway 7 between Agassiz and Mission is now open for emergency vehicles, meaning that some limited transport of staff, supplies and potentially dialysis patients, may be possible tomorrow.
- HEMBC coordinating regional EOCs as required
- Weather and road closures are continuing to impact HHR and patient/supply transport options, incl. pharmaceuticals, lab services, etc.
- Facility evacuations continue to take place within their respective HAs
- Disaster Psychosocial Services are deployed to Abbotsford.
- BCEHS is working in support of patient and supply transportation

### FHA

#### Abbotsford

- Abbotsford Regional Hospital is only reporting minor staffing challenges at this time.

#### Chilliwack

- Receiving evacuees from the health system.

#### Hope

- City remains cut-off from Lower Mainland.
- Rail transport in late yesterday evening of essential staff and supplies.
- Air transport coordination continues to supply both health facilities and emergency support services.

### IHA

#### Princeton

- Princeton Hospital has evacuated to Penticton.

#### Merritt

- It is estimated that it will be over a week before any water services are returned to Merritt.

#### Island Health

- Ferry transport coordination continues to support the timely movement of lab and medical samples between sites due to Malahat impacts.
- Work underway to establish transport procedure for staff and patients through Malahat closures.

The Duty Officer will continue to monitor the situation, and provide updates as they become available.

Jonathan carroll

Provincial Health Duty Officer

**24/7 Duty Officer at 250-686-6061 or [hlth.dutyofficer@gov.bc.ca](mailto:hlth.dutyofficer@gov.bc.ca)**

## FW: Correction: Update 3: Flooding Impacts (Atmospheric River & Health System Impacts)

---

From: Edwards, Joanne HLTH:EX <Joanne.Edwards@gov.bc.ca>  
To: Halicki, Ashley HLTH:EX <Ashley.Halicki@gov.bc.ca>  
Sent: December 23, 2021 1:43:22 PM PST

**From:** HLTH MOC Duty Officer HLTH:EX <hlth.dutyofficer@gov.bc.ca>

**Sent:** November 16, 2021 9:39 PM

**To:** Twyford, Philip HLTH:EX <Philip.Twyford@gov.bc.ca>; Craig, Kevin HLTH:EX <Kevin.Craig@gov.bc.ca>; Galt, Jamie HLTH:EX <Jamie.Galt@gov.bc.ca>; Pokorny, Peter HLTH:EX <Peter.Pokorny@gov.bc.ca>; Edwards, Joanne HLTH:EX <Joanne.Edwards@gov.bc.ca>; 'Henry, Bonnie HLTH:EX' <Bonnie.Henry@gov.bc.ca>; Emerson, Brian P HLTH:EX <Brian.Emerson@gov.bc.ca>; Lavoie, Martin HLTH:EX <Martin.Lavoie@gov.bc.ca>; Butler, Janice HLTH:EX <Janice.Butler@gov.bc.ca>; Anderson, Kristy HLTH:EX <Kristy.Anderson@gov.bc.ca>; Fisher, Kiersten D HLTH:EX <Kiersten.Fisher@gov.bc.ca>; Maxson, Sandra HLTH:EX <Sandra.Maxson@gov.bc.ca>; hlth Emergency Preparedness Staff <hlthemergprep@Victoria1.gov.bc.ca>; Heinze, Laura R HLTH:EX <Laura.Heinze@gov.bc.ca>; Parte, Maura HLTH:EX <Maura.Parte@gov.bc.ca>; HLTH Health Issues HLTH:EX <HealthIssues@gov.bc.ca>; Guerrero, Thomas HLTH:EX <Thomas.Guerrero@gov.bc.ca>; Ferrier, Jeffrey GCPE:EX <Jeffrey.Ferrier@gov.bc.ca>; Baade, Leah J HLTH:EX <Leah.Baade@gov.bc.ca>; Sterloff, Trish HLTH:EX <Trish.Sterloff@gov.bc.ca>; Russo, Geneen HLTH:EX <Geneen.Russo@gov.bc.ca>; Fishwick, David HLTH:EX <David.Fishwick@gov.bc.ca>; van der Leer, Gerrit HLTH:EX <Gerrit.vanderLeer@gov.bc.ca>

**Cc:** XT:Lavery, John HLTH:IN <john.lavery@phsa.ca>; Blessin, Scott [PHSA] <Scott.Blessin@phsa.ca>; 'Gerry Delorme' <gerry.delorme@viha.ca>

**Subject:** Correction: Update 3: Flooding Impacts (Atmospheric River & Health System Impacts)

**Importance:** High

**Please note the following correction:**

The Barrowtown Pump station has not yet failed. The failure is described by local government as “imminent” and is expected to result in “catastrophic flooding” for areas that are in the pre-existing evacuation order area. No new areas have yet been placed under evacuation order.

Jonathan carroll

Provincial Health Duty Officer

**24/7 Duty Officer at 250-686-6061 or [hlth.dutyofficer@gov.bc.ca](mailto:hlth.dutyofficer@gov.bc.ca)**

---

**From:** HLTH MOC Duty Officer HLTH:EX <[hlth.dutyofficer@gov.bc.ca](mailto:hlth.dutyofficer@gov.bc.ca)>

**Subject:** Update 3: Flooding Impacts (Atmospheric River & Health System Impacts)

Due to the limited number of changes over the last 24 hours, this update is being sent in lieu of a Health System Situation report.

Significant impacts due to extreme weather events continue to be experienced across the B.C. health system. The Emergency Management Unit has a health sector liaison onsite at EMBCs Provincial Emergency Coordination Centre and is actively coordinating with Health Emergency Management BC staff across regions.

**The Situation is beginning to stabilize, but remains extremely dynamic.**

*The below updates are not likely to be exhaustive, and may have changed since last reported.*

**New information is in blue**

**Weather Update**

- Rain across the province has mostly subsided.
- Slight showers expected for many areas into the later part of the week, but no significant rains.
- Heavy snow is expected early next week along the north and central coast of the province.
- Interior is experiencing cold and dry conditions and may experience road ice in some areas, potentially further impacting travel difficulties.
- Moderately cold, conditions may lead to snowfall conditions developing.
- **Winter Storm Warning in effect for:** Haines Road – Haines Junction to Pleasant Camp, and South Klondike Highway - Carcross to White Pass.
- **Snowfall Warning in effect for:** Coquihalla Highway - Hope to Merritt, and North Coast – inland sections.
- Flood warning, watches and advisories continue on many rivers, tributaries across the southern part of the province.

**Overall Emergency Management Updates**

- The Barrowtown Pump Station, which services the Sumas Prairie area of Abbotsford, has failed. Residents are being advised to abandon all attempts to save their livestock and leave evacuation areas immediately.
- EMBC's Provincial Emergency Coordination Centre (PECC) has stood up as of 0830 – Health Liaison is on-site
- EMBC activated its Southwest, Central and Vancouver Island Provincial Regional Emergency Operations Centres and are coordinating with municipalities, regional districts and first nation communities
- Significant impacts to MOTI infrastructure throughout Vancouver Island, Lower Mainland, Interior. Long-term impacts expected on several major routes. Refer to Drive BC for updates.
- Ongoing expansions to evacuation alerts/orders in Abbotsford
- Significant [power outages](#) impacting province.
- EMBC has approved Disaster Financial Assistance for flooding in the Vancouver Island & Central Coast, Southwest, and Central regions of the province, including all First Nations communities, electoral areas, and municipalities within these areas.

## **Health System Impacts as of 1145**

### **General**

- Highway 7 between Agassiz and Mission is now open for emergency vehicles, meaning that some limited transport of staff, supplies and potentially dialysis patients, may be possible tomorrow.
- HEMBC coordinating regional EOCs as required
- Weather and road closures are continuing to impact HHR and patient/supply transport options, incl. pharmaceuticals, lab services, etc.
- Facility evacuations continue to take place within their respective HAs
- Disaster Psychosocial Services are deployed to Abbotsford.
- BCEHS is working in support of patient and supply transportation

### **FHA**

#### **Abbotsford**

- Abbotsford Regional Hospital is only reporting minor staffing challenges at this time.

#### **Chilliwack**

- Receiving evacuees from the health system.

#### **Hope**

- City remains cut-off from Lower Mainland.
- Rail transport in late yesterday evening of essential staff and supplies.
- Air transport coordination continues to supply both health facilities and emergency support services.

### **IHA**

#### **Princeton**

- Princeton Hospital has evacuated to Penticton.

#### **Merritt**

- It is estimated that it will be over a week before any water services are returned to Merritt.

### **Island Health**

- Ferry transport coordination continues to support the timely movement of lab and medical samples between sites due to Malahat impacts.
- Work underway to establish transport procedure for staff and patients through Malahat closures.

The Duty Officer will continue to monitor the situation, and provide updates as they become available.

Jonathan Carroll

Provincial Health Duty Officer

**24/7 Duty Officer at 250-686-6061 or [hlth.dutyofficer@gov.bc.ca](mailto:hlth.dutyofficer@gov.bc.ca)**