

Evergreen Line Rapid Transit Project
Project Board

AGENDA
CONFIDENTIAL

Subject:	Regular Project Board meeting	Project Meeting #22
Date:	January 15, 2015	
Time:	1:00 p.m. – 2:00 p.m.	
Location:	s.15	

AGENDA

Item	Board Requirement	Lead	Time
22.1. Call to Order and Approval of Agenda	Decision	K. Richter	1:00
22.2 Approval of Minutes from July 24, 2014	Decision	K. Richter	1:05
Project Status Updates			
22.3 Director's Project Update	Information	A. Farrell	1:10
22.4 Financial Update	Information	A. Farrell	1:30
New Business			
22.5 Evergreen Extension Service Plan	Information	A. Farrell	1:40
22.6 System Safety Certification Process	Information	J. Eastman	1:50
22.7 Future Meetings	Information	A. Farrell	1:59
22.8 Adjournment		K. Richter	2:00

Evergreen Line Rapid Transit Project

Meeting Number #22

January 15, 2015

Project Board Members Present:

Grant Main - Regrets
Fred Cummings
Ian Jarvis
Kevin Richter

Project Board Support:

Amanda Farrell
David Beckley
David Chang
John Eastman
Raymond Louie
Stu Jackes
James Harvey
Jon Buckle
Dave Stewart
Sarah Rocchi
Kate Sloan – Note Taker

19.1 Call to Order and Approval of Agenda – K. Richter

The meeting was called to order at 1:11p.m. The meeting was chaired by K. Richter.

The agenda was approved as circulated.

19.2 Approval of Minutes from February 13, 2014 – K. Richter

The minutes of the July 14, 2014 ELRT Project Board meeting were approved as circulated.

Action Item Review:

- There were no open actions to review.

Project Status Updates

19.3 Director's Project Update– A. Farrell

A. Farrell distributed a Project Board Update presentation to supplement the Progress Report and Project Status dashboard that was circulated in the meeting materials.

A. Farrell provided an overview of the document highlighting the following:

- Properties: The Project has completed 97% of the total property files. The Project Team continues to work on the remaining property files. EGRT has access to all properties needed for construction.
- Federal Funding: The Project continues to meet bi-weekly with the Federal Government to provide progress updates. Changes to the federal cash flows were made in December to reflect construction progress.
- First Nations: EGRT continues to provide contract opportunities for First Nations

Evergreen Line Rapid Transit Project

- Environmental: The environmental compensation work is well underway. In late November, there was a sediment issue at Pinnacle creek due to adjacent construction work, which was immediately addressed by EGRT. In late August, the EAO conducted a project site inspection. The inspection report was provided in January which indicated one minor issue which had already been resolved on site.
- s.13,s.17
- Communications: Over last quarter, the Project continued with an extensive community relations program (door-to-door visits, construction bulletins and traffic advisories). Community relations have been focused on the tunnel boring operations and the issues encountered during TBM maintenance. A community meeting was held on Jan. 14 with Port Moody residents in the Cecile Drive area.
- Concurrent works: The station plazas designs are 90% complete and will be tender ready for Spring 2015. The Klahanie tender package for the wall and landscaping was released in December and closes Jan. 16. The work will begin at the end of March.
- Parking: The City of Coquitlam provided a letter to the Project on parking at the end of the line at Lafarge Lake –Douglas Station. The City would like to see a parking structure provided by the Project. The Project is preparing a response to the letter. The Project is providing additional parking at Coquitlam Central Station.
- Public art: The Project is working with the municipalities and TransLink to incorporate public art in the station plaza designs.

R. Louie provided an overview of design and construction highlighting the following:

- Design: Guideway and station design is mainly complete and systems designs is about 95% complete.
- Construction: The elevated guideway along North Road is complete. The segmental truss is progressing well along Pinetree Way and is currently at Lincoln Avenue. The at-grade guideway through Port Moody is complete. All station sites are under construction. The timber pile installation is progressing well along the CPR tracks (Section 425) and will be completed by end of January.
- Tunnel: The tunnel is approx. one third complete (675m). The tunnel boring is progressing slower than anticipated due to challenges faced during maintenance interventions. Two sinkholes occurred while the TBM was stopped for maintenance – one at Chateau Place and one at Cecile Drive. Currently, the TBM is stopped under Cecile Drive and EGRT is assessing how to complete the maintenance. The next planned intervention will be at Clarke Road and Seaview Drive.
- Casting: The casting of guideway segments was completed in December 2014 and the casting of tunnel liners is almost complete.

Evergreen Line Rapid Transit Project

- Trackwork and LIM Rail installation: Trackwork is progressing with approx. 30% of the single track completed (Segment 1 and 3 complete). The switch machines have been installed at Burquitlam and Lougheed stations. Cable trays are currently being installed for the power installation.
- Testing & Commissioning: The testing plan is anticipated to commence in early May 2015.
- Vehicles: The assembly of the first vehicle will be completed in early February 2015. Bombardier is scheduled to deliver the first train in August 2015.

19.4 Financial Update – A. Farrell

A. Farrell provided an overview of the financial status of the Project:

- The Project continues to be on budget. A portion of the contingency was moved out to later in the Project reflecting the current risk profile.
- The P3 contract cash flows have been adjusted to account for the slower tunnel construction progress.

New Business

19.5 Evergreen Extension Service Plan – R. Louie

R. Louie provided an overview of the following:

- TransLink proposed to modify the opening day operating plan by extending the Expo Line terminus from Lougheed Town Centre Station to Production Way Station.
- This proposed operational plan will accommodate SFU students by maintaining the same level of service by limiting their number of transfers as today.
- TransLink completed train simulations with BCRTC to confirm operational feasibility.
- This operational plan does not impact ridership and capacity for opening day on the Evergreen Line.
- The Province has reviewed the details of this plan with TransLink and is supportive.
- The modifications to the signage need to be confirmed with contractor to avoid impacts to EGRT's schedule.

19.6 System Safety Certification Process – J. Eastman

J. Eastman reviewed the Safety Certification Memo and provided the following overview:

- During the testing and commissioning phase, there will be a series of Safety Certificates required that will relate to each systems component of which the Tunnel Ventilation System is one of the most critical.

Evergreen Line Rapid Transit Project

- Although most the work related to this system will be designed, tested and commissioned by the Primary Contractor, there are elements at the Operating and Maintenance Centre (OMC) that will be undertaken by TransLink.
- The inputs from both parties will then have to be combined into a single all-embracing Safety Certificate that BCRTC will need when it applies for an Operating Permit from the BC Safety Authority.
- As part of this process, TransLink needs to identify the personnel that will be undertaking the Safety Certification within TransLink's scope of work. TransLink was scheduled to identify the personnel by October 2014; however, this date was missed.
- It is critical that the personnel are identified as soon as possible to prevent delays with the contractor. The Testing and Commissioning phase is anticipated to begin May 2015.
- TransLink noted that the procurement process for resources is underway and the RFQ should be released shortly. Due to the specialized skills required, the resourcing has been challenging.
- The Province recommended a follow-up update teleconference to track the progress of this issue.

19.7 Future Meetings – A. Farrell

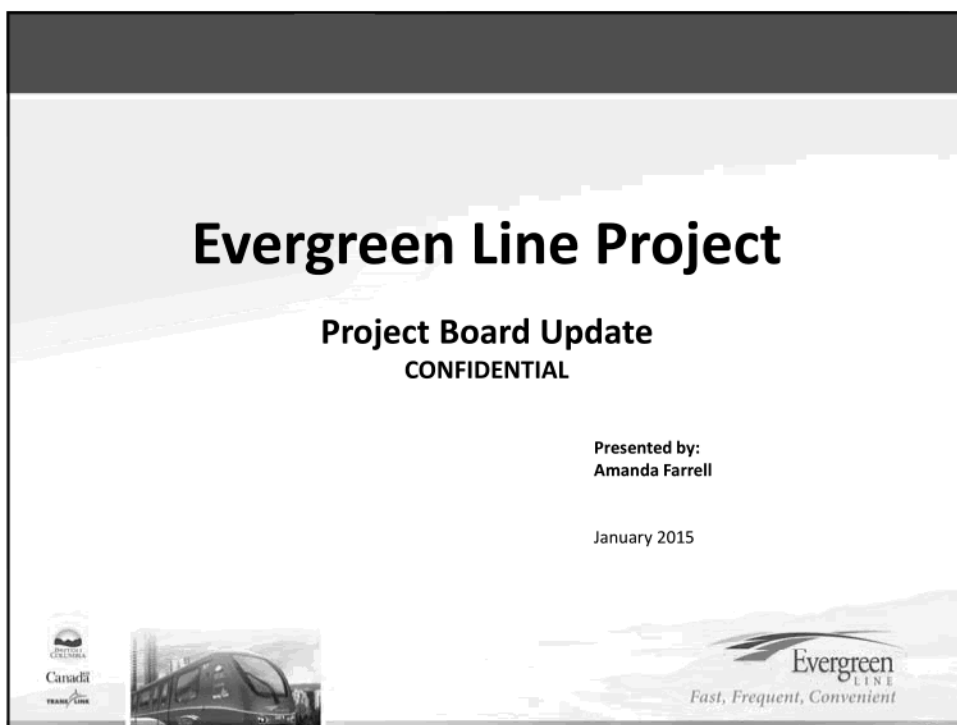
The next quarterly meeting is tentatively scheduled for late April.

Action

Call to be scheduled in next two weeks to discuss Safety Certification Memo.

19.8 Adjournment – K. Richter

The meeting was adjourned at 2:08pm.



1. General

- Property
- Funding Partners
- Communications and Community Relations
- First Nations
- Environmental
- Risks



2. Primary Contract –Design

- Design progress
 - Guideway design 100% Complete
 - Station design 100% Complete
 - Systems design 95% Complete



3. Primary Contract - Construction

- Work On-Site
 - North/Clarke Road: Elevated guideway complete
 - Port Moody: At-grade guideway complete
 - Pinetree: Elevated guideway progressing
 - All Station sites under construction
 - Section 425: More than 6,236 of 6,342 timber piles installed
- Casting
 - All 1,005 guideway segment casting completed in Dec 2014
 - More than 9,896 of 10,384 tunnel liner segments cast



4. Primary Contract - Construction

- Trackwork
 - Track work 6346 metres installed
 - Walkway 4773 metres installed
 - Lim Rail 1000 metres installed
- Tunnel Boring (Critical Path)
 - Main boring re-commenced June 2014
 - Bored 675 meters



5. Primary Contract –Construction

- Testing and Commissioning
 - Commence Lougheed Town Centre to Burquitlam Station early May 2015



6. Primary Contract cont'd

North Road Elevated guideway complete



7. Primary Contract cont'd

South Portal PPS construction



Evergreen
LINE
Fast, Frequent, Convenient

8. Primary Contract cont'd

Bored Tunnel construction



Evergreen
LINE
Fast, Frequent, Convenient

9. Primary Contract cont'd

At-Grade guideway construction



Evergreen
LINE
Fast, Frequent, Convenient

10. Primary Contract cont'd

Trackwork



Evergreen
LINE
Fast, Frequent, Convenient

11. Primary Contract cont'd

Timber Piling / MSE Wall construction



Evergreen
LINE
Fast, Frequent, Convenient

12. Primary Contract cont'd

Pinetree Elevated guideway construction



Evergreen
LINE
Fast, Frequent, Convenient

13. Primary Contract cont'd

Lougheed Town Centre Station construction



Evergreen
LINE
Fast, Frequent, Convenient

14. Primary Contract cont'd

Burquitlam Station construction



Evergreen
LINE
Fast, Frequent, Convenient

15. Primary Contract cont'd

Moody Centre Station construction



Evergreen
LINE
Fast, Frequent, Convenient

16. Primary Contract cont'd

Inlet Station construction



Evergreen
LINE
Fast, Frequent, Convenient

17. Primary Contract cont'd

Coquitlam Central Station construction



Canada
TRANS CANADA



Evergreen
LINE
Fast, Frequent, Convenient

18. Primary Contract cont'd

Lincoln Station construction



Canada
TRANS CANADA



Evergreen
LINE
Fast, Frequent, Convenient

19. Primary Contract cont'd

Lafarge Lake – Douglas Station construction



Evergreen
LINE
Fast, Frequent, Convenient

20. Vehicles

- 28 new vehicles
 - Final design complete
 - Assembly of first vehicle complete early February 2015
 - Commence testing
 - First train delivery August 2015



Evergreen
LINE
Fast, Frequent, Convenient

21. Concurrent Works

- Concurrent Works
 - Station Plazas
 - 90% Design Complete
 - Tender ready Spring 2015
 - Parking
 - South Portal
 - Klahanie/Suterbrook: Acoustic Wall and landscaping
 - Public Art



22. Project Budget and Financial Update

- Budget - \$1,431 million
- s.17
-
- Cashflow analysis

