

**District Highways Manager
Selkirk R3 - D12**

SPEED	ZONE NUMBER
90 km/hr	0951REV [REDACTED]
FILE NUMBER	
70020-12	
HQ: 70020 - 35	

Pursuant to Section 146 (2) of the Motor Vehicle Act of the Province of British Columbia, the maximum rate of speed over a portion or portions of highways described hereunder is limited as specified above.


Describe route number, highway name, terminal points, L.K.I. reference and total length of speed zone.

HIGHWAY 1
WTP - 2.84 km East of Perry River Bridge
ETP - West Boundary of Glacier National Park
Length 87.67 km
RECEIVED
JUN 01 2001

 Ministry of Transportation & Highways
Engineering Branch

**EXCLUDING ANY INTERVENING ZONES ESTABLISHED UNDER THE MOTOR VEHICLE ACT,
146.2 SPEED LIMITS AND
EXCLUDING SEGMENTS WITHIN MOUNT REVELSTOKE NATIONAL PARK.**

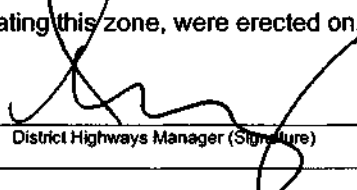
01/04/19
Date (yyyy/mm/dd)
Victoria B C


Chief Engineer
for Minister of Transportation and Highways

Dirk Nyland
Print Name

Regulatory speed limit signs designating this zone, were erected on:

Dec 08, 1997
Date (yyyy/mm/dd)


District Highways Manager (Signature)

D. P. Handley
Print Name

Distribution:

Original	-	Chief Engineer	
Copy	-	Regional Traffic Engineer	<input type="checkbox"/> Database Updated
Copy	-	NCOi/C Regional Integrated Traffic Camera Unit	
Copy	-	OiC Integrated Traffic Camera Unit, Richmond, Fax: (604) 664-7964	
Copy	-	District Files	
<input type="checkbox"/> Copy	-	Centerline Marking Supervisor (forward only if No Passing Zones required changing.)	

Dean Handley
District Highways Manager
Selkirk District
Revelstoke, B.C.

SPEED	ZONE NUMBER
90 km/hr	951 Revision
FILE NUMBER	
70020-12	
HQ: 70020 - 35	

Pursuant to Section 146 (2) of the Motor Vehicle Act of the Province of British Columbia, the maximum rate of speed over a portion or portions of highways described hereunder is limited as specified above.

Describe route number, highway name, terminal points, L.K.I. reference and total length of speed zone.

ROUTE 1 Trans Canada Highway

West Terminal Point: 2.84 km East of Perry River Bridge
LKI Segment 960 31.81 km


East Terminal Point: West Boundary of Glacier National Park
LKI Segment 980 0.00 km

Length: 87.67 km

Excluding any intervening zones established under the Motor Vehicle Act, Section 146(2), Speed Limits and
Excluding segments within Mount Revelstoke National Park identified as Segment 975 km 1.27 - 1.62 and Segment 975 km 17.90 - 30.55

1999/11/30
Date (yyyy/mm/dd)

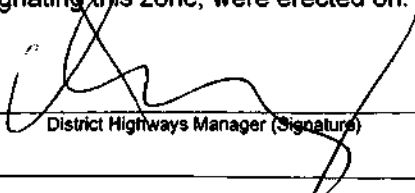
Victoria B C


Senior Traffic Engineer (Signature)
for Minister of Transportation and Highways

E. Miska
Print Name

Regulatory speed limit signs designating this zone, were erected on:

1997/12/08
Date (yyyy/mm/dd)


District Highways Manager (Signature)

Dean Handley, DHM
Print Name

Distribution:

- | | | |
|-----------------------------------|---|---|
| <input type="checkbox"/> Original | - Office of Sr. Traffic Engineer | <input type="checkbox"/> Database Updated |
| <input type="checkbox"/> Copy | - Regional Traffic engineer | |
| <input type="checkbox"/> Copy | - NCO/c Regional ITCU | |
| <input type="checkbox"/> Copy | - OIC Integrated Traffic Camera Unit, Richmond, BC | |
| <input type="checkbox"/> Copy | - District Files | |
| <input type="checkbox"/> Copy | - Centerline Marking Supervisor (Forward only if No Passing Zones required changing.) | |

GOVERNMENT OF BRITISH COLUMBIA
MINISTRY OF HIGHWAYS AND PUBLIC WORKS (HIGHWAYS)

MAXIMUM SPEED ZONES

To Regional Highway Engineer
Ministry of Transportation
and Highways

KAMLOOPS, British Columbia

Pursuant to section 140 (2) of the *Motor-vehicle Act*, the rate of speed has been limited as described hereunder and I would request the erection of the necessary Maximum Speed Limit and associated signs to define the maximum speed over a portion or portions of highway as described below:

Terminal Points	Speed (km/h)	Zone Number
Route #1 Trans Canada Highway - Sicamous to Glacier National Park.	90 km/h	951 (Revisor

West Terminal Point - 100 metres east of Stadnicki Road at Sicamous.

East Terminal Point - at west boundary of Glacier National Park.

EXCLUDING ANY INTERVENING ZONES ESTABLISHED UNDER THE
MOTOR VEHICLE ACT, SECTION 140(2), SPEED RESTRICTIONS.

Victoria, B.C.

February 4, 19 80

Minister of Highways and Public Works

by 
Director of Traffic Engineering

Ministry of Highways personnel must report after the signs necessary to define the zone have been erected.

To Director of Traffic Engineering,
Parliament Buildings,
Victoria, B.C. V8V 2M3

The maximum speed signs, designating this zone on the highway, were erected on the following date

Feb - 28, 1980


District Highways Manager

NOTE—

Minimum six copies of Form H. 223 are made for each zone.

One copy is retained by the Director of Traffic Engineering.

Three copies are sent to the police having jurisdiction over the zone.

Two copies are sent to the Regional Highway Engineer who in turn sends them to the District Highways Manager. The District Highways Manager gives the date on which the signs were erected, signs the forms, returns one form to the Director of Traffic Engineering, and retains one form for his files.

c.c. Mr. R.M. Hearst, Systems Planning Engineer - Victoria

GOVERNMENT OF BRITISH COLUMBIA
DEPARTMENT OF HIGHWAYS
MAXIMUM SPEED ZONES

To Regional Highway Engineer

Department of Highways

Kamloops

Pursuant to section 140 (2) of the *Motor-vehicle Act*, the rate of speed has been limited as described hereunder and I would request the erection of the necessary Maximum Speed Limit and associated signs to define the maximum speed over a portion or portions of highway as described below:

Terminal Points	Speed M.p.h.	Zone Number
Rte. #1 Trans-Canada Hwy. - Sicamous to Glacier National Park	55 (90 km/h)	951 (Revision)

West Terminal Point - 1000 feet east of Rte. #97A
Vernon-Sicamous Hwy. at Sicamous
East Terminal Point - At west bdy. of Glacier National Park

EXCLUDING ANY INTERVENING ZONES ESTABLISHED UNDER THE
MOTOR VEHICLE ACT, SECTION 140, SPEED RESTRICTIONS

Victoria, B.C.

November 21st, 19 74

Minister of Highways

by

[Signature]
Senior Traffic Engineer

Department of Highways personnel must report after the signs necessary to define the zone have been erected.

To Senior Traffic Engineer,
Parliament Buildings,
Victoria, B.C.

The maximum speed signs, designating this zone on the highway were erected on the following date
Nov. 19, 1974

[Signature]
District Official

NOTE—

Minimum six copies of Form H. 223 are made for each zone.

One copy is retained by the Senior Traffic Engineer.

Three copies are sent to the police having jurisdiction over the zone.

Two copies are sent to Regional Highway Engineer who in turn sends them to District Official. The District Official gives the date on which the signs were erected, signs the forms, returns one form to the Senior Traffic Engineer, and retains one form for his files.

500-874-8804

c.c. Centerline Marking Supervisor
c.c. Planning Branch
c.c. District Hwy. Manager, Salmon Arm

GOVERNMENT OF BRITISH COLUMBIA

DEPARTMENT OF HIGHWAYS

MAXIMUM SPEED ZONES

DEPT. OF HIGHWAYS
TRAFFIC BRANCH
PARLIAMENT BUILDINGS

DEC 4 - 1974

To Regional Highway EngineerDepartment of HighwaysNelson

ANS:

NOTED:

DATE:

12/5/74

Pursuant to section 140 (2) of the *Motor-vehicle Act*, the rate of speed has been limited as described hereunder and I would request the erection of the necessary Maximum Speed Limit and associated signs to define the maximum speed over a portion or portions of highway as described below:

Terminal Points

Speed
M.p.h.Zone
Number

Rte. #1 Trans-Canada Hwy. - Sicamous to
Glacier National Park

55

951

(90 km/h) (Revision)

West Terminal Point - 1000 feet east of Rte. #97A Vernon-
Sicamous Hwy. at Sicamous

East Terminal Point - At west bdy. of Glacier National Park

EXCLUDING ANY INTERVENING ZONES ESTABLISHED UNDER THE

MOTOR VEHICLE ACT, SECTION 140, SPEED RESTRICTIONS

Victoria, B.C.

November 19th, 1974

Minister of Highways

by

Senior Traffic Engineer

Department of Highways personnel must report after the signs necessary to define the zone have been erected.

To Senior Traffic Engineer,
Parliament Buildings,
Victoria, B.C.

The maximum speed signs, designating this zone on the highway were erected on the following date

Nov 19th, 1974

District Official

NOTE—

Minimum six copies of Form H. 223 are made for each zone.

One copy is retained by the Senior Traffic Engineer.

Three copies are sent to the police having jurisdiction over the zone.

Two copies are sent to Regional Highway Engineer who in turn sends them to District Official. The District Official gives the date on which the signs were erected, signs the forms, returns one form to the Senior Traffic Engineer, and retains one form for his files.

500-874-8804

c.c. Centerline Marking Supervisor

c.c. Planning Branch

c.c. District Highway Manager, Revelstoke

GOVERNMENT OF BRITISH COLUMBIA

DEPARTMENT OF HIGHWAYS

MAXIMUM SPEED ZONESTO: REGIONAL ENGINEER,DEPT. OF HIGHWAYSKAMLOOPS, B.C.

Pursuant to section 133 (2) of the "Motor Vehicle Act," the rate of speed has been limited as described hereunder and I would request the erection of the necessary Maximum Speed Limit and associated signs to define the maximum speed over a portion or portions of highway as described below:

<u>TERMINAL POINTS</u>	<u>SPEED M.P.H.</u>	<u>ZONE NUMBER</u>
<u>TRANS-CANADA HIGHWAY - ROUTE #1</u>		
<u>SICAMOUS - REVELSTOCK - GLACIER NATIONAL PARK</u>		
West Terminal Point - 1000 feet east of Rt. #97B (Mara Lake Road) being east terminal point of 30 MPH Zone #600 in Sicamous.	60 MPH	#951 (AMENDED)
East terminal point - West boundary of Glacier National Park.		
EXCLUDING ANY INTERVENING ZONES ESTABLISHED UNDER THE MOTOR VEHICLE ACT, SECTION 140, SPEED RESTRICTIONS.		

Victoria, B. C.

May 30, 1961Minister of Highways,
by:J.H. Harding,
Senior Traffic Engineer.

Department of Highways personnel must report after the signs necessary to define the zone have been erected.

TO:

Senior Traffic Engineer,
Parliament Buildings,
Victoria, B. C.

The maximum speed signs, designating this zone on the highway were erected on the following date _____, 19____

District Engineer or
Superintendent.

NOTE:

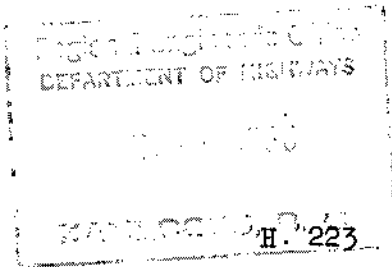
Minimum 6 copies of form H. 223 are made for each zone.

One copy is retained by the Senior Traffic Engineer.

Three copies are sent to the Police having jurisdiction over the zone.

Two copies are sent to Regional Engineer who in turn sends them to District Engineer or Superintendent. The District Engineer or Superintendent gives the date on which the signs were erected, signs the forms, returns one form to the Senior Traffic Engineer and retains one form for his files.

Victoria



GOVERNMENT OF BRITISH COLUMBIA
DEPARTMENT OF HIGHWAYS

Request for erection of Speed Limit Signs in Accordance with
Section 133 (2) of the "Motor Vehicle Act."

TO: Regional Engineer,
Dept. of Highways,
Kamloops, B.C.

DEPT. OF HIGHWAYS
TRAFFIC BRANCH
PARLIAMENT BUILDINGS
JUL 13 1960

Pursuant to section 133 (2) of the "Motor Vehicle Act," the rate
of speed has been limited as described hereunder and I would request the erection
of "Speed Limit Signs" at the described locations:

<u>PORTION OF HIGHWAY</u> (give full description, initial and terminal points and, if necessary attach sketch)	<u>SPEED</u> state miles per hour	<u>SLOW ZONE</u> <u>NUMBER</u>
<u>TRANS CANADA HIGHWAY - Sicamous to Revelstoke</u>		
<u>West Terminal Point - West junction of the Malakwa</u> <u>Access Road with T.C.H.</u>		
<u>East Terminal Point - 1000 feet west of Glasswilliam</u> <u>Bridge, approximately 7 miles west of Revelstoke</u> <u>City boundary.</u>	<u>60 M.P.H.</u>	<u># 951</u>

(Note: use a separate form for each zone)

VICTORIA, B. C.
June 8, 1960

MINISTER OF HIGHWAYS
by: J.H. Harding
Sr. Traffic Engineer

Kindly report hereon when the signs have been erected.

~~XX~~

TO: Chief Engineer
Victoria, B. C. Attn. Traffic Engineer

The above signs have been duly erected on the date as shown below.

JUNE 30TH 1960 A. L. Steute
District Engineer.

Hwy 1 - REVELSTOKE TO GLACIER NP																				
Location							Location													
From:			West Boundary Glacier Park		To:		Route 23N		Reviewed by: John Babineau			From:			Route 23 N		To:		West Boundary Glacier Park	
			Curve						Review Date: JULY 2014						Curve					
KM (WB)	Reference	Dir.	S/E	Existing	Proposed	Action	Comments	KM (EB)	Reference	Dir.	S/E	Existing	Proposed	Action	Comments					
42.00								6.00												
42.05								5.95												
42.10								5.90												
42.15								5.85												
42.20								5.80		L	E									
42.25								5.75												
42.30								5.70												
42.35								5.65												
42.40								5.60												
42.45								5.55												
42.50								5.50												
42.55								5.45												
42.60								5.40												
42.65								5.35												
42.70								5.30												
42.75								5.25				R4 90	R-004-x (100)	REPLACE	100KM/H					
42.80								5.20												
42.85								5.15												
42.90								5.10												
42.95								5.05												
43.00								5.00												
43.05								4.95												
43.10								4.90				W-54-R	W-054-R	REFRESH						
43.15								4.85												
43.20								4.80												
43.25								4.75												
43.30								4.70												
43.35								4.65		L	S									
43.40								4.60												
43.45								4.55												
43.50								4.50												
43.55								4.45												
43.60								4.40	OAK DRIVE (KOA)			R-2	R-002	REFRESH	FOR HWY 1 EBR					
43.60								4.40				W-54-D	W-054-D	REFRESH	FOR HWY 1 EB					
43.60								4.40				W-54-R	W-054-R	REFRESH	FOR HWY 1 EB					
43.60								4.40				W-54-D	W-054-D	REFRESH	FOR ACCESS NB					
43.60								4.40				W-54-L	W-054-L	REFRESH	FOR HWY 1 WB					
43.60								4.40				R-1	R-001	REFRESH	FOR ACCESS NB					
43.60								4.40				R-2	R-002	REFRESH	FOR ACCESS NBR					
43.60								4.40				R-9	R-009-2	REFRESH	FOR HWY 1 WB. INSTALL ON BACKSIDE OF R-2					
43.65								4.35												
43.70								4.30												
43.75								4.25												
43.80								4.20		L	E									
43.85		R	S					4.15												
43.90								4.10												
43.95								4.05												
44.00		R	E	W7-1L	W-001-L	REPLACE	REMOVE W-7	4.00		L	S									
44.05								3.95												
44.10								3.90		R	E									
44.15								3.85												
44.20								3.80												
44.25	O/H SIGN BRIDGE	L	S	W-54-R	W-054-R	REFRESH	IN PULLOUT	3.75	O/H SIGN BRIDGE											
44.25				W-54-R		REMOVE	IN PULLOUT FACING WEST	3.75												
44.30								3.70												
44.35								3.65	TOWNLEY ROAD			W-54-R	W-054-R	REFRESH	FOR HWY 1 EB					
44.35								3.65				W-54-D	W-054-D	REFRESH	FOR TOWNLEY NB					
44.35								3.65				W-54-R	W-054-R	REFRESH	FOR TOWNLEY NBR					
44.35								3.65				W-54-L	W-054-L	REFRESH	FOR HWY 1 WB					
44.35								3.65				R-2	R-002	REFRESH	FOR TOWNLEY NBR (LHS)					

Hwy 1 - REVELSTOKE TO GLACIER NP															
Location							Reviewed by: John Babineau	Location							
From:	West Boundary Glacier Park			To:	Route 23N		Curve Tested: June 2013	From:	Route 23 N			To:	West Boundary Glacier Park		
	Curve						Review Date: JULY 2014		Curve						
KM (WB)	Reference	Dir.	S/E	Existing	Proposed	Action	Comments	KM (EB)	Reference	Dir.	S/E	Existing	Proposed	Action	Comments
44.35								3.65				R-2	R-002	REFRESH	FOR TOWNLEY NBR (RHS)
44.35								3.65					R-002	NEW	FOR HWY 1 EBR
44.35								3.65				G-011-1 W/ TAB		REMOVE	FOR TOWNLEY NBR
44.35								3.65				R-1	R-001	REFRESH	FOR TOWNLEY NB
44.35								3.65				G-6 W/ G-11 TABS		NO ACTION	SUGGEST REFRESH WITH NEW GUIDE SIGN DESIGN
44.40				PS8		REMOVE	ENHANCED MESSAGING AT ALPINE LANE	3.60							
44.45								3.55		R	S				
44.50								3.50							
44.55								3.45							
44.60		L	E					3.40							
44.65								3.35		R	E				
44.70								3.30							
44.75								3.25							
44.80		L	S					3.20	"REVELSTOKE →"			W-7		REMOVE	
44.85				PS9		REMOVE		3.15		R	S				
44.85					Zg-008-3a-Rx	NEW	"ALPINE LANE Ahead" w/ RIGHT arrow	3.15							
44.90		L	E					3.10							
44.95								3.05				W-61R	W-061-R	REFRESH	Right Hand Side
44.95								3.05				W-61R	W-061-R	REFRESH	Left Hand Side
45.00								3.00							
45.05								2.95							
45.10								2.90					W-061-R	NEW	Left Hand Side
45.10								2.90					W-061-Ta (200M)	NEW	
45.10								2.90				W-61R	W-061-R	REFRESH	Right Hand Side
45.10								2.90				W-61-Ta	W-061-Ta (200M)	REFRESH	
45.15	ALPINE LANE (MUN)							2.85	ALPINE LANE (MUN)						
45.20				I-76	I-076-x	REFRESH		2.80							
45.25								2.75					CR-1 W/ TABS	RELOCATED	RELOCATED FROM 2.70
45.30								2.70				W7-1L		REMOVE	
45.30								2.70				CR-1 W/ TABS		RELOCATE	RELOCATE TO 2.75
45.30								2.70							
45.35								2.65					Zg-008-3a-Lx	NEW	"ALPINE LANE Ahead" w/ left arrow
45.40				W7-1R	W-007-1	REFRESH	ACCESS RIGHT	2.60							
45.45								2.55							
45.50								2.50							
45.55								2.45				R107		NO ACTION	
45.60								2.40							
45.65	ROAD							2.35							
45.70								2.30				R7-2		REMOVE	
45.75								2.25		L	E				
45.80		R	S					2.20					R-007-2	NEW	
45.85								2.15							
45.90	ROAD							2.10					PS-008	NEW	
45.95								2.05				R15L	R-015-Lx	REFRESH	
46.00								2.00					I-082-2	NEW	
46.00								2.00					I-082-xT (900M)	NEW	FOR 900M
46.05								1.95							
46.10				W-54-R	W-054-R	REFRESH		1.90							
46.15								1.85				PS8		REMOVE	
46.15								1.85				W-7-1	W-007-1	REFRESH	ACCESS LEFT
46.20								1.80							
46.25		R	E					1.75		L	S				
46.30								1.70							
46.35								1.65							
46.40				W-54-R	W-054-R	REFRESH		1.60							
46.45								1.55							
46.50								1.50				W-54-R	W-054-R	REFRESH	
46.55				R3 70	R-003-x (70)	REFRESH		1.45							
46.60								1.40					PS9	RELOCATED	RELOCATED FROM 1.35 (POST)
46.65								1.35				PS9	R-004-x (100)	REPLACE	100KM/H

Hwy 1 - REVELSTOKE TO GLACIER NP															
Location							Reviewed by: John Babineau	Location							
From:	West Boundary Glacier Park			To:	Route 23N		Curve Tested: June 2013	From:	Route 23 N			To:	West Boundary Glacier Park		
		Curve					Review Date: JULY 2014			Curve					
KM (WB)	Reference	Dir.	S/E	Existing	Proposed	Action	Comments	KM (EB)	Reference	Dir.	S/E	Existing	Proposed	Action	Comments
46.70				R-4 70	R-004-x (70)	REFRESH	70KM/H	1.30	R-4-90				REMOVE	Remove 90km/h sign	
46.70				W-1L		REMOVE		1.30				W-61R	W-061-R	REFRESH	Right Hand Side
46.70								1.30				W-61R	W-061-R	REFRESH	Left Hand Side
46.75								1.25							
46.80								1.20							
46.85				W62		REMOVE		1.15		R	E		W-061-R	NEW	Left Hand Side
46.85								1.15					W-061-Ta (200M)	NEW	
46.85								1.15				W-61R	W-061-R	REFRESH	Right Hand Side
46.85								1.15				W-61-Ta	W-061-Ta (200M)	REFRESH	
46.90		L	S	W62		REMOVE		1.10							
46.95				W62		REMOVE		1.05							
47.00				W62(2)		REMOVE		1.00							
47.00				W-54-R	W-054-D	REPLACE		1.00							
47.05	BRIDGE S			W62		REMOVE		0.95	BRIDGE E						
47.05				W-54-R	W-054-R	REFRESH		0.95							
47.05				W-54-L	W-054-L	REFRESH		0.95							
47.10	BRIDGE E							0.90	BRIDGE S			W-54-R	W-054-R	REFRESH	
47.10								0.90				W-54-L	W-054-L	REFRESH	
47.15								0.85		R	S	R-9	R-009-2	REFRESH	INSTALLED AT ONRAMP FROM PARK ACCESS
47.15								0.85					R-009-2	NEW	LEFT HAND SIDE AND RIGHT HAND SIDE
47.20		L	E	W-54-R	W-054-R	REFRESH		0.80							
47.25								0.75		L	E	W-54-R	W-054-R	REFRESH	
47.30		R	S					0.70							
47.35								0.65							
47.40								0.60							
47.45				R3 60	R-003-x (60)	REFRESH	60KM/H	0.55							
47.50								0.50					W-64-1 W/TAB	RELOCATED	RECENT SIGN. CONDITION OKAY
47.55		R	E	R4 60	R-004-x (60)	REFRESH	60KM/H	0.45		L	S	R4 70	R-004-x (70)	REFRESH	LOCATION APPROX. ALIGN WITH R-4 60
47.55								0.45				W-64-1W/TAB		RELOCATE	RELOCATE 50M DOWNSTREAM
47.60								0.40							
47.65								0.35							
47.70								0.30							
47.75				W-54-R	W-054-R	REFRESH		0.25							
47.80								0.20					R-007-2	NEW	
47.85								0.15							
47.90								0.10				W48	W-048	REFRESH	
47.95								0.05							
48.00	JCT 23							0.00	ROUTE 23N						