

Page 001 of 353 to/à Page 062 of 353

Withheld pursuant to/removed as

s.12 ; s.13 ; s.16

Page 063 of 353 to/à Page 090 of 353

Withheld pursuant to/removed as

s.13 ; s.18

Page 091 of 353 to/à Page 094 of 353

Withheld pursuant to/removed as

s.13 ; s.16

Page 095 of 353

Withheld pursuant to/removed as

s.13 ; s.16 ; s.18

Page 096 of 353 to/à Page 097 of 353

Withheld pursuant to/removed as

s.13 ; s.16

Page 098 of 353

Withheld pursuant to/removed as

s.13 ; s.16 ; s.18

Page 099 of 353 to/à Page 100 of 353

Withheld pursuant to/removed as

s.13 ; s.16

Page 101 of 353

Withheld pursuant to/removed as

s.13 ; s.16 ; s.18

Page 102 of 353

Withheld pursuant to/removed as

s.13 ; s.16

Page 103 of 353

Withheld pursuant to/removed as

s.13 ; s.16 ; s.17

Page 104 of 353

Withheld pursuant to/removed as

s.13 ; s.16

Page 105 of 353

Withheld pursuant to/removed as

s.13 ; s.16 ; s.17

Page 106 of 353

Withheld pursuant to/removed as

s.13 ; s.16

Page 107 of 353

Withheld pursuant to/removed as

s.13 ; s.16 ; s.17

Page 108 of 353 to/à Page 114 of 353

Withheld pursuant to/removed as

s.13 ; s.16

Page 115 of 353

Withheld pursuant to/removed as

s.13 ; s.16 ; s.18

Page 116 of 353 to/à Page 118 of 353

Withheld pursuant to/removed as

s.13 ; s.16

Page 119 of 353

Withheld pursuant to/removed as

s.13 ; s.16 ; s.18

Page 120 of 353 to/à Page 122 of 353

Withheld pursuant to/removed as

s.13 ; s.16

Page 123 of 353

Withheld pursuant to/removed as

s.13 ; s.16 ; s.18

Page 124 of 353 to/à Page 125 of 353

Withheld pursuant to/removed as

s.13 ; s.16

Page 126 of 353 to/à Page 127 of 353

Withheld pursuant to/removed as

s.13 ; s.16 ; s.17

Page 128 of 353

Withheld pursuant to/removed as

s.13 ; s.16

Page 129 of 353

Withheld pursuant to/removed as

s.13 ; s.16 ; s.17

Page 130 of 353

Withheld pursuant to/removed as

s.13 ; s.16

Page 131 of 353 to/à Page 132 of 353

Withheld pursuant to/removed as

s.13 ; s.16 ; s.18

Page 133 of 353 to/à Page 134 of 353

Withheld pursuant to/removed as

s.13 ; s.16

Page 135 of 353

Withheld pursuant to/removed as

s.16

Page 136 of 353 to/à Page 137 of 353

Withheld pursuant to/removed as

s.13 ; s.16

Page 138 of 353

Withheld pursuant to/removed as

s.16

Page 139 of 353 to/à Page 140 of 353

Withheld pursuant to/removed as

s.13 ; s.16

Page 141 of 353

Withheld pursuant to/removed as

s.16

Page 142 of 353 to/à Page 167 of 353

Withheld pursuant to/removed as

s.13 ; s.16

Page 168 of 353

Withheld pursuant to/removed as

s.13 ; s.16 ; s.18.1

Page 169 of 353 to/à Page 170 of 353

Withheld pursuant to/removed as

s.13 ; s.16

s.13; s.16

From: Cachelin, Serene <Serene.Cachelin@stantec.com>
To: Hilbert, Jaime ENV:EX <Jaime.Hilbert@gov.bc.ca>
Cc: jay.porter <jay.porter@gov.bc.ca>, karin.hilliard@gov.bc.ca, Johnathan Tillie <jtillie@tillieconsulting.ca>, Wilson, Doug J TRAN:EX <douglas.j.wilson@gov.bc.ca>, Smith, Grant TRAN:EX <Grant.Smith@gov.bc.ca>, Cachelin, Serene <Serene.Cachelin@stantec.com>, Hilliard, Karin TRAN:EX <Karin.Hilliard@gov.bc.ca>, Porter, Jay C TRAN:EX <Jay.Porter@gov.bc.ca>
Sent: December 1, 2022 12:09:46 PM PST
Attachments: s.13; s.16

[EXTERNAL] This email came from an external source. Only open attachments or links that you are expecting from a known sender.

Hello Jaime,

s.13; s.16

The MoTI Regional Director's approval to proceed with this application is in the thread below.

Please let me know if you have any questions.

Sincerely,

Serene Cachelin

Project Manager

Mobile: 250-572-7322
Serene.Cachelin@Stantec.com

Stantec
300-175 2nd Avenue
Kamloops BC, V2C 5W1

s.15; s.22

The content of this email is the confidential property of Stantec and should not be copied, modified, retransmitted, or used for any purpose except with Stantec's written authorization. If you are not the intended recipient, please delete all copies and notify us immediately.

From: Porter, Jay C TRAN:EX <Jay.Porter@gov.bc.ca>
Sent: Wednesday, November 30, 2022 4:20 PM
To: Cachelin, Serene <Serene.Cachelin@stantec.com>
Cc: elena.farmer <elena.farmer@gov.bc.ca>; Johnathan Tillie <jtillie@tillieconsulting.ca>
Subject: s.13

s.13

Please see ^{s.13} below

From: Staite, Janelle A TRAN:EX <Janelle.Staite@gov.bc.ca>
Sent: November 30, 2022 4:18 PM
To: Porter, Jay C TRAN:EX <Jay.Porter@gov.bc.ca>
Subject: s.13

s.13

s.13

From: Porter, Jay C TRAN:EX <Jay.Porter@gov.bc.ca>
Sent: November 30, 2022 3:28 PM
To: Staite, Janelle A TRAN:EX <Janelle.Staite@gov.bc.ca>
Subject: s.13

s.13

Hi Janelle

s.13

From: Cachelin, Serene <Serene.Cachelin@stantec.com>
Sent: November 30, 2022 1:30 PM
To: Porter, Jay C TRAN:EX <Jay.Porter@gov.bc.ca>
Cc: Farmer, Elena TRAN:EX <Elena.Farmer@gov.bc.ca>; Johnathan Tillie <jtillie@tillieconsulting.ca>
Subject: s.13
s.13

[EXTERNAL] This email came from an external source. Only open attachments or links that you are expecting from a known sender.

Hello Jay,

s.13

Project Numbers:

- 12712 H3 Snass Creek Bridge Structure No. 01214 Replacement
- 12714 H3 Nineteen Mile Bridge Structure No. 01268 Replacement

Description of Work:

The Ministry of Transportation and Infrastructure is planning to replace two bridges which are located on Highway 3 within E.C. Manning Provincial Park approximately 30km and 38km east of Hope, BC. Both bridges are nearing the end of their serviceable life and require replacement to maintain the safety and reliability of the Highway 3 corridor. To facilitate long-term maintenance, bridge design requirements and road safety improvements, s.13

s.13

Please let me know if you have any questions.

Sincerely,

Serene Cachelin

Project Manager

Mobile: 250-572-7322

Serene.Cachelin@Stantec.com

Stantec

300-175 2nd Avenue

Kamloops BC, V2C 5W1

s.15; s.22

The content of this email is the confidential property of Stantec and should not be copied, modified, retransmitted, or used for any purpose except with Stantec's written authorization. If you are not the intended recipient, please delete all copies and notify us immediately.

Caution: This email originated from outside of Stantec. Please take extra precaution.

Attention: Ce courriel provient de l'extérieur de Stantec. Veuillez prendre des précautions supplémentaires.

Atención: Este correo electrónico proviene de fuera de Stantec. Por favor, tome precauciones adicionales.

Page 176 of 353 to/à Page 177 of 353

Withheld pursuant to/removed as

s.12 ; s.13 ; s.16

Page 178 of 353 to/à Page 179 of 353

Withheld pursuant to/removed as

s.12 ; s.13 ; s.16 ; s.18

Page 180 of 353

Withheld pursuant to/removed as

s.12 ; s.13 ; s.14 ; s.16

Page 181 of 353 to/à Page 200 of 353

Withheld pursuant to/removed as

s.12 ; s.13 ; s.16 ; s.18

Page 201 of 353 to/à Page 211 of 353

Withheld pursuant to/removed as

s.12 ; s.13 ; s.16

Page 212 of 353

Withheld pursuant to/removed as

s.21

3.01 Highway Snow Removal

s.21

Page 214 of 353

Withheld pursuant to/removed as

s.21

Re: Alertable for DriveBC

From: Farmer, Elena TRAN:EX <Elena.Farmer@gov.bc.ca>
To: Lee, Chris TRAN:EX <Chris.Lee2@gov.bc.ca>, Bhatti, Ashok A TRAN:EX <Ashok.Bhatti@gov.bc.ca>, Staite, Janelle A TRAN:EX <Janelle.Staite@gov.bc.ca>
Sent: December 18, 2022 1:03:33 PM PST
Attachments: image006.gif, image008.png, image009.png, image007.gif, image005.jpg

Not that I am aware, but I think it is something to look into with IMB. Maybe it can link to DriveBC to push out our updates.

Elena

Get Outlook for iOS <<https://aka.ms/o0ukef>>

From: Lee, Chris TRAN:EX <Chris.Lee2@gov.bc.ca>
Sent: Sunday, December 18, 2022 12:07:54 PM
To: Bhatti, Ashok A TRAN:EX <Ashok.Bhatti@gov.bc.ca>; Farmer, Elena TRAN:EX <Elena.Farmer@gov.bc.ca>; Staite, Janelle A TRAN:EX <Janelle.Staite@gov.bc.ca>
Subject: Fwd: Alertable for DriveBC

Do you know if this alert is in the work or? Seems good idea but not sure cost vs probability of using it??

Get Outlook for iOS <<https://aka.ms/o0ukef>>

From: TMCBC TRAN:EX <TMCBC@gov.bc.ca>
Sent: Sunday, December 18, 2022 10:54:21 AM
To: EMBC PDM EMBC:EX <EMBCPDM@gov.bc.ca>
Cc: TRAN TMCBC Staff <TMCBCSTF@Victoria1.gov.bc.ca>; Braun, Michael TRAN:EX <Michael.Braun@gov.bc.ca>
Subject: RE: Alertable for DriveBC

Morning, Gabe

Unfortunately, our team does not have any control over the Alertable App and will not be pushing any updates regarding this incident. Public updates we provide are done through Twitter, DriveBC.ca, and overhead messaging boards.

Luckily, however, the situation at Mountain Highway has improved considerably and two of the three lanes have been cleared. Only the right lane remains blocked.

Our operations manager for Howe Sound, Michael Braun, may be able to answer your question regarding who to contact for updates on the Alertable app. His email is Michael.Braun@gov.bc.ca

Regards,

James Shaw

TMC Agent

Transportation

Management

1-866-707-7862

Centre

@DriveBC <<https://twitter.com/DriveBC>>

BC

TMCBC@gov.bc.ca

From: EMBC PDM EMBC:EX <EMBCPDM@gov.bc.ca>

Sent: December 18, 2022 10:41 AM

To: TMCBC TRAN:EX <TMCBC@gov.bc.ca>

Subject: FW: Alertable for DriveBC

Hi,

I've had a request from the District of North Vancouver for information on whether an Alertable App alert is going to be sent out for the closure on Highway 1 between Mountain Highway and Lynn Valley Road. Is Drive BC going to be pushing one out on the app? And is this the best email for getting information on this type of request?

Thanks,

Gabe Carpendale

Provincial Duty Manager

Emergency Management BC <<http://www.gov.bc.ca/emergency-preparedness-response-recovery>>

PO Box 9201 Stn Prov Gov

Victoria, B.C. CANADA V8W 9J1

Ph: 250-952-4278

24 Hour Emergency Reporting 1-800-663-3456

Follow us on Twitter @EmergencyInfoBC <<http://twitter.com/emergencyinfobc>> and @PreparedBC
<<https://twitter.com/PreparedBC>>

<<https://twitter.com/PreparedBC>> <<https://www.facebook.com/PreparedBC>>

From: Bland, Craig W EMBC:EX <Craig.Bland@gov.bc.ca>

Sent: December 18, 2022 10:21

To: EMBC PDM EMBC:EX <EMBCPDM@gov.bc.ca>

Cc: Meeks, Ken EMBC:EX <Ken.Meeks@gov.bc.ca>

Subject: FW: Alertable for DriveBC

Information from NESM regarding an Alertable.

Let me know what you think and the proper protocol when you can.

Thanks very much.

Craig Bland | Regional Manager

Ministry of Emergency Management And Climate Readiness

14292 Green Timbers Way

Surrey, B.C. CANADA V3T OJ4

Ph: 236-468-3232 Cell: 604-329-6452

24 Hour Emergency Reporting: 1 800 663-3456

Follow PreparedBC

<<https://twitter.com/PreparedBC>> <<https://www.facebook.com/PreparedBC>>

Follow EmergencyInfoBC

<<https://twitter.com/EmergencyInfoBC>>

From: Emily Dicken <EDicken@nsem.ca>

Sent: December 18, 2022 10:11

To: Bland, Craig W EMBC:EX <Craig.Bland@gov.bc.ca>; Carolyn Grafton <GraftonC@dnv.org>; Simon Svane Als <SSvaneAls@nsem.ca>; NSEM Duty Staff <dutystaff@nsem.ca>

Subject: Fwd: Alertable for DriveBC

[EXTERNAL] This email came from an external source. Only open attachments or links that you are expecting from a known sender.

Hello Craig

Thank you for the chat.

Please see the info below from DNV communications.

Through the PDM, please advise. If you require any other info or a coordination call with NSEM, please reach out.

Thank you,

Emily

Get Outlook for iOS

<<https://can01.safelinks.protection.outlook.com/?url=https://aka.ms/o0ukef&data=05|01|Craig.Bland@gov.bc.ca|64749911b4804dedbae108dae1233664|6fdb52003d0d4a8ab036d3685e359adc|0|0|638069838598323314|Unknown|TWFPbGZsb3d8eyJWljojMC4wLjAwMDAiLCJQIjoiV2luMzliLCJBTiI6Ik1haWwiLCJXVCi6Mn0=|3000|||&sdata=1C1ibAYeEF2>

VIWfzuUatX09V8hupZDEOs9gcSb32CZs=&reserved=0>

From: Carolyn Grafton <GraftonC@dnv.org>

Sent: Sunday, December 18, 2022 9:23:09 AM

To: Emily Dicken <EDicken@nsem.ca>; Simon Svane Als <SSvaneAls@nsem.ca>; NSEM Duty Staff <dutystaff@nsem.ca>

Subject: Alertable for DriveBC

Good morning;

Engineering and Comms for the DNV request that DriveBC issue an Alertable about the status of Highway 1 ASAP.

DriveBC reports on Twitter that WB lanes are closed on Hwy 1 between Mtn Hwy and Lynn Valley Road. Traffic media are advising travellers to avoid EB Hwy 1 in the same stretch.

Please advise people to stay off the roads until the storm has passed and crews have a chance to clear priority 1 routes.

Carolyn

RE: PMB/AFB Snow & Ice Status Update - Dec 19 2022 0900hrs

From: Stevenson, Christie TRAN:EX <Christie.Stevenson@gov.bc.ca>
To: TRAN LMD Executive Incident Response <LMDEXINR@Victoria1.gov.bc.ca>
Cc: Braun, Michael TRAN:EX <Michael.Braun@gov.bc.ca>, Robertson, Steve TRAN:EX <Steve.Robertson@gov.bc.ca>, Drury, Krista TRAN:EX <Krista.Drury@gov.bc.ca>, Bonhomme, Korry TRAN:EX <Korry.Bonhomme@gov.bc.ca>, Sekhon, Pravdeep TRAN:EX <Pravdeep.Sekhon@gov.bc.ca>, Mustaq, Andaleeb TRAN:EX <Andaleeb.Mustaq@gov.bc.ca>, TMCBC TRAN:EX <TMCBC@gov.bc.ca>, Kazemi, Maziar TRAN:EX <Maziar.Kazemi@gov.bc.ca>
Sent: December 19, 2022 9:06:53 AM PST
Attachments: image002.png, image004.png, image005.png, image003.png, image001.png

Good morning, everyone,

We are currently at an Alert Level 2. The next system is expected Monday evening. Crews will remain on-station at bridges throughout the day reloading and preparing for this next snow event. We are continuing to monitor the forecast.

Please find below an update on the status of the Port Mann Bridge and Alex Fraser Bridges.

ALERT LEVEL 2

Weather Update:

Current Condition:

Mostly Cloudy, -8 degrees.

Discussion

Steady snow will be expected overnight Monday night and Tuesday morning although there is some question on how heavy the snow will be. Flurries linger at times before the chance for flurries ends late morning Monday. No accumulations are expected as temperatures remain too cold to bond to the cables. Dry Monday afternoon, but the chance for flurries returns Monday evening. Steadier snow begins around midnight Monday night and continues through most of Tuesday morning before snow decreases and tapers off during the midday/afternoon hours. Snow totals are expected to be around 8-16 cm for the Port Mann Bridge and 7-14 cm for the Alex Fraser Bridge and George Massey Tunnel. Some models are showing snow totals lower than that so there is a chance that snow totals may end up lower than forecasted.

Extended

Flurries will be possible at times on Tuesday night and Wednesday morning before the chance for flurries ends as skies clear. There should be little or no accumulations, though. Dry Wednesday night, Thursday, and Thursday night with precipitation returning on Friday. Temperatures will remain cold through Wednesday night before gradually warming up on Thursday for the end of the week, but temperatures will still be cold enough on Friday for precipitation to fall as snow. Looks like there will be a snow to freezing rain to rain transition on Friday night/Saturday, but the timing of the change of precipitation type and how long freezing rain lasts is uncertain. Looks like there is a chance for a prolonged period of freezing rain on Friday night/Saturday. Keep an eye on upcoming reports for more details as we get closer to the event. Active weather continues through the weekend and next week, but temperatures look much

warmer with no additional snow or ice concerns for the cables expected at this time after Saturday.

Control:

No chain drops

Work Crews:

Snow and Ice Management team are on-station and monitoring conditions.

Maintenance Contractor crews and Rope Access Technicians (RATs) are on-station at both bridges.

Traffic:

EB HOV lane closure in effect at Port Mann. Intermittent lane closures in both directions can be expected throughout the week at Port Mann to support snow and ice operations.

At Alex Fraser, traffic management is stationed at the closest interchanges located at either end of the bridge structure and mobilized for short-response times if lane closures are required.

Next Update:

Mon Dec 19 1600hrs

Hay'sxw'qa Si'em – Thank you with respect

Sincerely,

Christie Stevenson

Area Manager – Surrey/Langley

Ministry of Transportation and Infrastructure

Lower Mainland District Office

310-1500 Woolridge Street

Coquitlam, BC Canada V3K 0B8

direct line: 236-455-1539

fax: 604-527-2222

christie.stevenson@gov.bc.ca

For the latest ministry news and information, click one of the icons below:

[<https://shiftintowinter.ca/>](https://shiftintowinter.ca/) [<http://tranbc.ca/>](http://tranbc.ca/) [<http://www.drivebc.ca/>](http://www.drivebc.ca/)

Highway Permits & Approvals website: <http://www.th.gov.bc.ca/permits/index.asp>

This communication (both the message and any attachments) is confidential and may be protected by solicitor client/privilege. It is intended only for the use of the person or persons to whom it is addressed. Any distribution, copying, or other use by anyone else is strictly prohibited. If you have received this communication in error, please destroy the email message and any attachments immediately and notify me by telephone or by email.

From: Kazemi, Maziar TRAN:EX <Maziar.Kazemi@gov.bc.ca>
Sent: Sunday, December 18, 2022 5:00 PM
To: TRAN LMD Executive Incident Response <LMDEXINR@Victoria1.gov.bc.ca>
Cc: Braun, Michael TRAN:EX <Michael.Braun@gov.bc.ca>; Robertson, Steve TRAN:EX <Steve.Robertson@gov.bc.ca>; Drury, Krista TRAN:EX <Krista.Drury@gov.bc.ca>; Stevenson, Christie TRAN:EX <Christie.Stevenson@gov.bc.ca>; Bonhomme, Korry TRAN:EX <Korry.Bonhomme@gov.bc.ca>; Sekhon, Pravdeep TRAN:EX <Pravdeep.Sekhon@gov.bc.ca>; Mustaq, Andaleeb TRAN:EX <Andaleeb.Mustaq@gov.bc.ca>; TMCBC TRAN:EX <TMCBC@gov.bc.ca>
Subject: PMB/AFB Snow & Ice Status Update - Dec 18 2022 1700hrs

Good evening, everyone,

Thanks for your patience on this update.

Snowfall continued thru the afternoon today and appears to have now tapered at both bridges. There is still potential for additional snowfall in the western parts of Metro Vancouver including the Alex Fraser Bridge. After a clean up round of collar drops at Port Mann Bridge, we are now at an ALERT LEVEL 3 for both bridges.

The next system is expected Monday evening. Crews will remain on-station at bridges overnight reloading and preparing for this next snow event. We are continuing to monitor the forecast.

Please find below an update on the status of the Port Mann Bridge and Alex Fraser Bridges.

ALERT LEVEL 3

Weather Update:

Current Condition:

Mostly Cloudy, -6 degrees.

Discussion:

Light snow is expected to start picking up around 7-8am Sunday morning with occasional light snow throughout the day. Snow may turn steadier for an hour or two around noon, then should start to decrease to flurries in the afternoon. Temps hover around freezing most of the day, but will be gradually dropping in the afternoon. Temps drop more significantly Sunday evening/night. Flurries taper off in the evening with conditions turning dry overnight. Monday looks dry and cold with temps remaining below freezing.

Extended:

Wednesday is looking dry and cold. There is some uncertainty for Thursday, but starting to lean towards Thursday being dry too with snow returning later Thursday night into Friday morning. Snow is possible for most of the day on Friday then snow levels will rise into the weekend and rain showers will be dominant throughout the rest of the weekend. Looks like a wet, but milder pattern through the following week with rain at times.

Control:

Up to 1 cm of snow accumulations observed at PMB throughout the day and cleared as required with approximately 3x rounds of collars dropped on low angle cable stays. Total of 209 chains dropped as follows:

North Tower outside cable stays: 45 collars dropped

North Tower center cable stays: 50 collars dropped

South Tower outside cable stays: 56 collars dropped

South tower centre cable stays: 58 collars dropped

Trace to no accumulations at AFB. No collar drops needed.

Work Crews:

Snow and Ice Management team are on-station and monitoring conditions.

Maintenance Contractor crews and Rope Access Technicians (RATs) are on-station at both bridges.

Traffic:

EB HOV lane closure in effect at Port Mann. Intermittent lane closures in both directions can be expected throughout the week at Port Mann to support snow and ice operations.

At Alex Fraser, there are right lane closures in both directions. These will be removed and lanes cleared once there is no longer snow concerns at AFB.

Next Update:

Mon Dec 19 0900hrs

Sincerely,

Maziar Kazemi

Operations Manager, Metro Vancouver

Ministry of Transportation and Infrastructure

Lower Mainland District Office

310-1500 Woolridge Street

Coquitlam, BC Canada V3K 0B8

direct line: 778-704-0024

fax: 604-527-2222

maziar.kazemi@gov.bc.ca

Pronouns I use: he, him, his

For the latest ministry news and information, click one of the icons below:

<<https://shiftintowinter.ca/>> <<http://tranbc.ca/>> <<http://www.drivebc.ca/>>

Highway Permits & Approvals website: <http://www.gov.bc.ca/highway-use-permits>

This communication (both the message and any attachments) is confidential and may be protected by solicitor client/privilege. It is intended only for the use of the person or persons to whom it is addressed. Any distribution, copying, or other use by anyone else is strictly prohibited. If you have received this communication in error, please notify me by telephone or by email and then destroy the email message and any attachments immediately.

From: Kazemi, Maziar TRAN:EX <Maziar.Kazemi@gov.bc.ca>

Sent: December 18, 2022 10:57 AM

To: TRAN LMD Executive Incident Response <LMDEXINR@Victoria1.gov.bc.ca>

Cc: Braun, Michael TRAN:EX <Michael.Braun@gov.bc.ca>; Robertson, Steve TRAN:EX

<Steve.Robertson@gov.bc.ca>; Drury, Krista TRAN:EX <Krista.Drury@gov.bc.ca>; Stevenson, Christie TRAN:EX

<Christie.Stevenson@gov.bc.ca>; Bonhomme, Korry TRAN:EX <Korry.Bonhomme@gov.bc.ca>; Sekhon, Pravdeep

TRAN:EX <Pravdeep.Sekhon@gov.bc.ca>; Mustaq, Andaleeb TRAN:EX <Andaleeb.Mustaq@gov.bc.ca>; TMCBC

TRAN:EX <TMCBC@gov.bc.ca>

Subject: RE: PMB/AFB Snow & Ice Status Update - Dec 18 2022 0900hrs

Importance: High

Hello,

I wanted to update the group that Port Mann Bridge is at an Alert Level 4 effective 9:44am.

Up to 1 cm of accumulations have been observed on low angle stays at PMB. Low angle stays are being targeted for accumulation removal, especially as temperatures continue to drop and cause concerns for icing.

2x rounds of collar were dropped on low angle stays. A few reports of collars becoming stuck as they made their way down and were set free by an additional collar drops where needed.

Crews currently monitoring to assess whether additional collar drops are required.

Sincerely,

Maziar Kazemi

Operations Manager, Metro Vancouver

Pronouns I use: he, him, his

Highway Permits & Approvals website:<http://www.gov.bc.ca/highway-use-permits>

This communication (both the message and any attachments) is confidential and may be protected by solicitor client/privilege. It is intended only for the use of the person or persons to whom it is addressed. Any distribution,

copying, or other use by anyone else is strictly prohibited. If you have received this communication in error, please notify me by telephone or by email and then destroy the email message and any attachments immediately.

From: Kazemi, Maziar TRAN:EX <Maziar.Kazemi@gov.bc.ca>

Sent: December 18, 2022 9:05 AM

To: TRAN LMD Executive Incident Response <LMDEXINR@Victoria1.gov.bc.ca>

Cc: Braun, Michael TRAN:EX <Michael.Braun@gov.bc.ca>; Robertson, Steve TRAN:EX

<Steve.Robertson@gov.bc.ca>; Drury, Krista TRAN:EX <Krista.Drury@gov.bc.ca>; Stevenson, Christie TRAN:EX

<Christie.Stevenson@gov.bc.ca>; Bonhomme, Korry TRAN:EX <Korry.Bonhomme@gov.bc.ca>; Sekhon, Pravdeep

TRAN:EX <Pravdeep.Sekhon@gov.bc.ca>; Mustaq, Andaleeb TRAN:EX <Andaleeb.Mustaq@gov.bc.ca>; TMCBC

TRAN:EX <TMCBC@gov.bc.ca>

Subject: PMB/AFB Snow & Ice Status Update - Dec 18 2022 0900hrs

Good morning, everyone,

We experienced light snowfall overnight with dropping temperatures and high winds as the arctic outflow continues to settle into the region. Snowfall has picked up intensity this morning as the Fraser Valley and Howe Sound outflows converged. There was lightning observed at Alex Fraser Bridge, and due to winds and changing weather conditions, right lane closures were put in at the Alex Fraser Bridge in both directions to support snow and ice operations. We are expecting periods of heavy snow to continue throughout the morning before decreasing to flurries in the afternoon. Ministry staff are out monitoring roads. All contractor resources are deployed. Information is being shared via the TranBC_LMD twitter account.

There is still conflicting information around snow amounts and event time and duration for the next winter events expecting Tuesday thru Thursday. We're continuing to monitor the forecast. Resources will be on-station at both bridges throughout the week as required.

Please find below an update on the status of the Port Mann Bridge and Alex Fraser Bridges.

alert level 3

Weather Update:

Current Condition:

Snowing, -3 degrees.

Discussion:

Light snow is expected to start picking up around 7-8am Sunday morning with occasional light snow throughout the day. Snow may turn steadier for an hour or two around noon, then should start to decrease to flurries in the afternoon. Temps hover around freezing most of the day, but will be gradually dropping in the afternoon. Temps drop more significantly Sunday evening/night. Flurries taper off in the evening with conditions turning dry overnight. Monday looks dry and cold with temps remaining below freezing.

Extended:

Wednesday is looking dry and cold. There is some uncertainty for Thursday, but starting to lean towards Thursday being dry too with snow returning later Thursday night into Friday morning. Snow is possible for most of the day on Friday then snow levels will rise into the weekend and rain showers will be dominant throughout the rest of the weekend. Looks like a wet, but milder pattern through the following week with rain at times.

Control:

Very light and dry trace snow accumulations observed at both bridges.

A total of 6 isolated test drops at PMB overnight.

Work Crews:

Snow and Ice Management team are on-station and monitoring conditions.

Maintenance Contractor crews and Rope Access Technicians (RATs) are on-station at both bridges.

Traffic:

EB HOV lane closure in effect at Port Mann. Intermittent lane closures in both directions can be expected throughout the week at Port Mann to support snow and ice operations.

At Alex Fraser, there are right lane closures in both directions.

Next Update:

Sun Dec 18 1600hrs

Sincerely,

Maziar Kazemi

Operations Manager, Metro Vancouver

Ministry of Transportation and Infrastructure

Lower Mainland District Office

310-1500 Woolridge Street

Coquitlam, BC Canada V3K 0B8

direct line: 778-704-0024

fax: 604-527-2222

maziar.kazemi@gov.bc.ca

Pronouns I use: he, him, his

For the latest ministry news and information, click one of the icons below:

<<https://shiftintowinter.ca/>> <<http://tranbc.ca/>> <<http://www.drivebc.ca/>>

Highway Permits & Approvals website: <http://www.gov.bc.ca/highway-use-permits>

This communication (both the message and any attachments) is confidential and may be protected by solicitor client/privilege. It is intended only for the use of the person or persons to whom it is addressed. Any distribution, copying, or other use by anyone else is strictly prohibited. If you have received this communication in error, please notify me by telephone or by email and then destroy the email message and any attachments immediately.

PMB/AFB Snow & Ice Status Update - Dec 19 2022 1600hrs

From: Kazemi, Maziar TRAN:EX <Maziar.Kazemi@gov.bc.ca>
To: TRAN LMD Executive Incident Response <LMDEXINR@Victoria1.gov.bc.ca>
Cc: Braun, Michael TRAN:EX <Michael.Braun@gov.bc.ca>, Robertson, Steve TRAN:EX <Steve.Robertson@gov.bc.ca>, Drury, Krista TRAN:EX <Krista.Drury@gov.bc.ca>, Bonhomme, Korry TRAN:EX <Korry.Bonhomme@gov.bc.ca>, Sekhon, Pravdeep TRAN:EX <Pravdeep.Sekhon@gov.bc.ca>, Mustaq, Andaleeb TRAN:EX <Andaleeb.Mustaq@gov.bc.ca>, TMCBC TRAN:EX <TMCBC@gov.bc.ca>
Sent: December 19, 2022 4:42:17 PM PST
Attachments: image001.png, image003.png, image004.png, image002.png

Good afternoon, everyone,

We're currently at an ALERT LEVEL 3 at both bridges. A low pressure system will make landfall in Washington State tonight. The associated front will brush through the very southern part of British Columbia giving another round of snow starting late this evening. It is currently lightly snowing in parts of Metro Vancouver. A snowfall warning has been issued by Environment Canada with up to 10-20cm of snowfall accumulations into late evening on Tuesday. Dry conditions expected Wednesday until next system Thursday night/Friday morning.

Crews will remain on-station at bridges 24/7 reloading and prepared for any anticipated snowfall. We're continuing to monitor the forecast for any changes.

Please find below an update on the status of the Port Mann Bridge and Alex Fraser Bridges.

ALERT LEVEL 3

Weather Update:

Current Condition:

Snowing, -8 degrees.

Discussion

New major snow accumulations are expected Monday night into Tuesday morning.

A few flurries start off the evening hours Monday and continue off and on before increasing to steadier snow late evening. Steady snow then continues throughout the rest of the night and can be light to moderate at times. 3-8 cm of snow are expected with periods of moderate snow, but confidence is somewhat low as snow may remain lighter with lesser totals than expected. The higher amounts are expected for higher towers. Temperatures remain well below freezing, so ice concerns are expected.

Steady snow continues into Tuesday morning before breaking into spotty flurries around midday. A few spotty flurries then continue throughout the rest of the day. With snow still being light to moderate at times in the morning, another 3-8 cm of snow can be expected along with ice concerns. Again, the confidence in the amounts is somewhat low as it depends on how heavy the snow gets, so we could see less. Spotty flurries then linger into Tuesday night with dry time mixing in. Temperatures remain well below freezing still, so high ice concerns are expected. Little to no accumulations are expected.

Any lingering flurries taper off into early Wednesday morning with dry and cold conditions throughout the rest of the day.

Extended

Conditions look to remain dry and cold through Thursday. Into late Thursday night/Friday morning, another disturbance looks to move into the area bringing more steady precipitation. The confidence on when it arrives is fair at the moment, but it arrives sometime late Thursday night or into Friday morning with steady snow, but it is looking more like Friday morning. Snow then continues, but it looks like there will be a snow to freezing rain to rain transition Friday night into Saturday. The confidence in when precipitation changes as well as how long freezing rain lasts is low at the moment, but keep an eye out for upcoming reports as we get closer. After Saturday, conditions look to become more mild with active weather continuing, but it should remain as rain.

Control:

No control

Work Crews:

Snow and Ice Management team are on-station and monitoring conditions.

Maintenance Contractor crews and Rope Access Technicians (RATs) are on-station at both bridges.

Traffic:

EB HOV lane closure in effect at Port Mann. Intermittent lane closures in both directions can be expected throughout the week at Port Mann to support snow and ice operations.

At Alex Fraser, traffic management is stationed at the closest interchanges located at either end of the bridge structure and mobilized for short-response times if lane closures are required.

Next Update:

Mon Dec 20 0900hrs

Sincerely,

Maziar Kazemi

Operations Manager, Metro Vancouver

Ministry of Transportation and Infrastructure

Lower Mainland District Office

310-1500 Woolridge Street

Coquitlam, BC Canada V3K 0B8

direct line: 778-704-0024

fax: 604-527-2222

maziar.kazemi@gov.bc.ca

Pronouns I use: he, him, his

For the latest ministry news and information, click one of the icons below:

<<https://shiftintowinter.ca/>> <<http://tranbc.ca/>> <<http://www.drivebc.ca/>>

Highway Permits & Approvals website: <http://www.gov.bc.ca/highway-use-permits>

This communication (both the message and any attachments) is confidential and may be protected by solicitor client/privilege. It is intended only for the use of the person or persons to whom it is addressed. Any distribution, copying, or other use by anyone else is strictly prohibited. If you have received this communication in error, please notify me by telephone or by email and then destroy the email message and any attachments immediately.

FW: s.13; s.16; s.17

From: Bhatti, Ashok A TRAN:EX
To: Elena.Farmer@gov.bc.ca, Staite, Janelle A TRAN:EX <Janelle.Staite@gov.bc.ca>
Sent: December 19, 2022 6:53:21 PM PST
Attachments: s.13; s.16; s.17

FYI. s.13

Thank you,

Ashok Bhatti, B.COMM. MBA

Executive Director

South Coast Region

Ministry of Transportation and Infrastructure

Visit us at:<http://www.gov.bc.ca/tran>

This e-mail is intended solely for the person or entity to which it is addressed and may contain confidential and privileged information. Any review, dissemination, copying, printing or other use of this e-mail by persons or entities other than the addressee is prohibited. If you have received this e-mail in error, please contact the sender immediately and delete the material from any computer.

From: Richter, Kevin J TRAN:EX <Kevin.Richter@gov.bc.ca>
Sent: December 19, 2022 5:30 PM
To: Bhatti, Ashok A TRAN:EX <Ashok.Bhatti@gov.bc.ca>
Subject: Fwd: s.13; s.16; s.17

Get Outlook for iOS <<https://aka.ms/o0ukef>>

From: Bawa, Reg R TRAN:EX <Reg.Bawa@gov.bc.ca>
Sent: Monday, December 19, 2022 4:39:32 PM
To: Krishna, Kaye TRAN:EX <Kaye.Krishna@gov.bc.ca>; Richter, Kevin J TRAN:EX <Kevin.Richter@gov.bc.ca>
Subject: s.13; s.16; s.17

s.13; s.16; s.17

R

Reg Bawa

ADM Policy, Programs & Partnerships

Transportation & Infrastructure

250-888-0658

From: Ross, Sarah <sarah.ross@translink.ca>
Sent: Monday, December 19, 2022 4:28 PM
To: Bawa, Reg R TRAN:EX <Reg.Bawa@gov.bc.ca>
Subject: s.13; s.16; s.17

[EXTERNAL] This email came from an external source. Only open attachments or links that you are expecting from a known sender.

Hey Reg,

Attached is some information on s.13; s.16; s.17
s.13; s.16; s.17 s.13; s.16; s.17
s.13; s.16; s.17

Dan Freeman on my team would be happy to meet with your team to give a presentation on this. Feel free to have Jodi or Kate reach out direct to him. Or we can add this to one of our partner engagement meetings. Let us know.

Sarah.

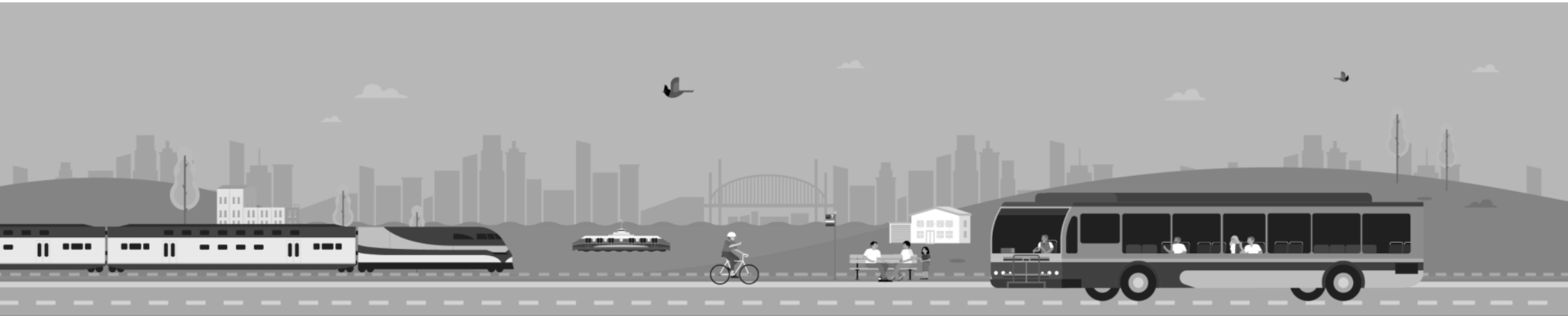
Sarah Ross (she/her)

Vice President Transportation Planning & Policy, TransLink

778.375.7636 desk S.22 cell

I acknowledge that I am on the unceded traditional Territory of the Coast Salish people

This e-mail and any attachments may contain confidential and privileged information. If you are not the intended recipient, please notify the sender immediately by return e-mail, delete this e-mail and destroy any copies. Any dissemination or use of this information by a person other than the intended recipient is unauthorized and may be illegal.



s.13; s.16; s.17

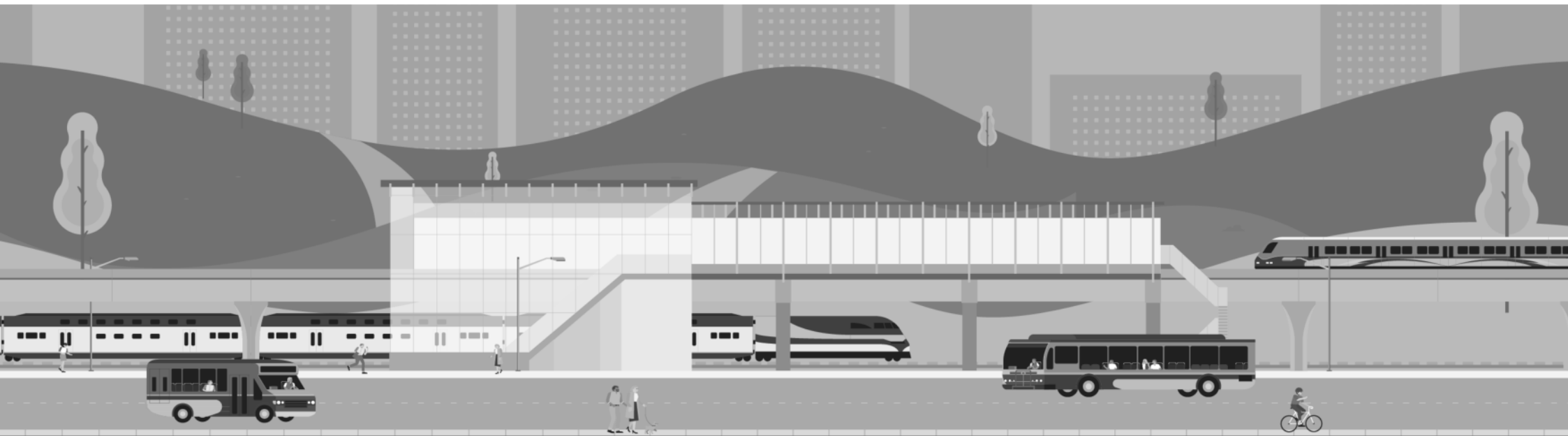
April 11, 2022

Page 233 of 353 to/à Page 243 of 353

Withheld pursuant to/removed as

s.13 ; s.16 ; s.17

Discussion



s.13; s.16; s.17



Together all the way



Page 246 of 353 to/à Page 247 of 353

Withheld pursuant to/removed as

s.13 ; s.16 ; s.17

FW: Translink KMs on buses, winter tires

From: Bhatti, Ashok A TRAN:EX
To: Elena.Farmer@gov.bc.ca
Cc: Staite, Janelle A TRAN:EX <Janelle.Staite@gov.bc.ca>
Sent: December 19, 2022 8:33:57 PM PST

FYI only. Messaging from the Minister on concerns involving TransLink Buses and Winter Conditions

Thank you,

Ashok Bhatti, B.COMM. MBA

Executive Director

South Coast Region

Ministry of Transportation and Infrastructure

Visit us at:<http://www.gov.bc.ca/tran>

This e-mail is intended solely for the person or entity to which it is addressed and may contain confidential and privileged information. Any review, dissemination, copying, printing or other use of this e-mail by persons or entities other than the addressee is prohibited. If you have received this e-mail in error, please contact the sender immediately and delete the material from any computer.

From: Duffus, Robert GCPE:EX <Robert.Duffus@gov.bc.ca>
Sent: December 19, 2022 4:13 PM
To: Harrison, Veronica MOTI:EX <Veronica.Harrison@gov.bc.ca>; Champion, Ella D MOTI:EX <Ella.D.Champion@gov.bc.ca>
Cc: Bhatti, Ashok A TRAN:EX <Ashok.Bhatti@gov.bc.ca>
Subject: Translink KMs on buses, winter tires

Re: the minister's question, here's info from Translink:

KEY MESSAGES

- Whenever winter weather is in the forecast, TransLink activates its snow plan for severe weather.
- This involves a series of actions we take to mitigate delays due to inclement weather.
- Our buses are only as good as the roads they drive on.
- Keeping roads clear of snow and ice is a responsibility of each municipality in the region.
- TransLink works closely with each municipality and is in constant communication with them to advise which roads should be prioritized for clearing.
- We encourage customers to know before they go.

- Whenever winter weather is in the forecast, we recommend customers build extra time into their commutes.

- We encourage to use our Trip Planner

s.15; s.22

Tires and tire socks

TransLink buses are equipped with ideal tires for typical Metro Vancouver winter weather.

- All our bus tires have the Three Peaks Mountain Snowflake symbol in addition to the M&S rating.
- These tires are the best tires for wet snow – which is typical for Metro Vancouver.
- These tires have been tested to provide traction in severe snow by the Tire and Rubber Association of Canada.
- While snow tires are ideal for powdery snow – they are not ideal for rainy conditions.
- We have tested snow tires and they don't perform as well when turning or braking on wet pavement.
- We exceed regulated requirements for tire tread depth and ensure all bus have appropriate tread depth each winter. We replace all tires with wearing treads each year as part of our snow plan if the tire's depth is below 11/32".
- TransLink uses tire socks on buses where appropriate, on routes with challenging terrains such as Burnaby Mountain, UBC, or some areas on the North Shore.

TransLink uses tire socks on routes where necessary

- Tire socks are helpful in hilly areas with snow buildup.
- We sometimes use tire socks on routes serving Burnaby Mountain, hilly areas of the North Shore, and UBC.
- We alter routes in need of snow socks so customers transfer to or from a bus with snow socks as buses get to problem areas.
- These tire socks limit the speed of buses, need a safe location to install, and are only useful on roads with snow on the ground, so they are not used on all routes.

Rob Duffus

Communications Manager

Page 251 of 353 to/à Page 266 of 353

Withheld pursuant to/removed as

s.12 ; s.13 ; s.14 ; s.16

RE: Alertable for DriveBC

From: Bhatti, Ashok A TRAN:EX <Ashok.Bhatti@gov.bc.ca>
To: Lee, Chris TRAN:EX <Chris.Lee2@gov.bc.ca>, Farmer, Elena TRAN:EX <Elena.Farmer@gov.bc.ca>, Staite, Janelle A TRAN:EX <Janelle.Staite@gov.bc.ca>
Sent: December 19, 2022 11:07:09 PM PST
Attachments: image002.gif, image005.png, image004.png, image003.gif, image001.jpg

I am not sure what is being referenced here. Perhaps we can chat tomorrow.

Thank you,

Ashok Bhatti, B.COMM. MBA

Executive Director

South Coast Region

Ministry of Transportation and Infrastructure

Visit us at:<http://www.gov.bc.ca/tran>

This e-mail is intended solely for the person or entity to which it is addressed and may contain confidential and privileged information. Any review, dissemination, copying, printing or other use of this e-mail by persons or entities other than the addressee is prohibited. If you have received this e-mail in error, please contact the sender immediately and delete the material from any computer.

From: Lee, Chris TRAN:EX <Chris.Lee2@gov.bc.ca>
Sent: December 18, 2022 12:08 PM
To: Bhatti, Ashok A TRAN:EX <Ashok.Bhatti@gov.bc.ca>; Farmer, Elena TRAN:EX <Elena.Farmer@gov.bc.ca>; Staite, Janelle A TRAN:EX <Janelle.Staite@gov.bc.ca>
Subject: Fwd: Alertable for DriveBC

Do you know if this alert is in the work or? Seems good idea but not sure cost vs probability of using it??

Get Outlook for iOS <<https://aka.ms/o0ukef>>

From: TMCBC TRAN:EX <TMCBC@gov.bc.ca>
Sent: Sunday, December 18, 2022 10:54:21 AM
To: EMBC PDM EMBC:EX <EMBCPDM@gov.bc.ca>
Cc: TRAN TMCBC Staff <TMCBCSTF@Victoria1.gov.bc.ca>; Braun, Michael TRAN:EX <Michael.Braun@gov.bc.ca>
Subject: RE: Alertable for DriveBC

Morning, Gabe

Unfortunately, our team does not have any control over the Alertable App and will not be pushing any updates regarding this incident. Public updates we provide are done through Twitter, DriveBC.ca, and overhead messaging

boards.

Luckily, however, the situation at Mountain Highway has improved considerably and two of the three lanes have been cleared. Only the right lane remains blocked.

Our operations manager for Howe Sound, Michael Braun, may be able to answer your question regarding who to contact for updates on the Alertable app. His email is Michael.Braun@gov.bc.ca

Regards,

James Shaw

TMC Agent

Transportation

Management

1-866-707-7862

Centre

@DriveBC <<https://twitter.com/DriveBC>>

BC

TMCBC@gov.bc.ca

From: EMBC PDM EMBC:EX <EMBCPDM@gov.bc.ca>

Sent: December 18, 2022 10:41 AM

To: TMCBC TRAN:EX <TMCBC@gov.bc.ca>

Subject: FW: Alertable for DriveBC

Hi,

I've had a request from the District of North Vancouver for information on whether an Alertable App alert is going to be sent out for the closure on Highway 1 between Mountain Highway and Lynn Valley Road. Is Drive BC going to be pushing one out on the app? And is this the best email for getting information on this type of request?

Thanks,

Gabe Carpendale

Provincial Duty Manager

Emergency Management BC <<http://www.gov.bc.ca/emergency-preparedness-response-recovery>>

PO Box 9201 Stn Prov Gov

Victoria, B.C. CANADA V8W 9J1

Ph: 250-952-4278

24 Hour Emergency Reporting 1-800-663-3456

Follow us on Twitter @EmergencyInfoBC <<http://twitter.com/emergencyinfobc>> and @PreparedBC <<https://twitter.com/PreparedBC>>

<<https://twitter.com/PreparedBC>> <<https://www.facebook.com/PreparedBC>>

From: Bland, Craig W EMBC:EX <Craig.Bland@gov.bc.ca>
Sent: December 18, 2022 10:21
To: EMBC PDM EMBC:EX <EMBCPDM@gov.bc.ca>
Cc: Meeks, Ken EMBC:EX <Ken.Meeks@gov.bc.ca>
Subject: FW: Alertable for DriveBC

Information from NESM regarding an Alertable.

Let me know what you think and the proper protocol when you can.

Thanks very much.

Craig Bland | Regional Manager

Ministry of Emergency Management And Climate Readiness

14292 Green Timbers Way

Surrey, B.C. CANADA V3T OJ4

Ph: 236-468-3232 Cell: 604-329-6452
24 Hour Emergency Reporting: 1 800 663-3456

Follow PreparedBC

<<https://twitter.com/PreparedBC>> <<https://www.facebook.com/PreparedBC>>

Follow EmergencyInfoBC

<<https://twitter.com/EmergencyInfoBC>>

From: Emily Dicken <EDicken@nsem.ca>
Sent: December 18, 2022 10:11
To: Bland, Craig W EMBC:EX <Craig.Bland@gov.bc.ca>; Carolyn Grafton <GraftonC@dnv.org>; Simon Svane Als <ssvaneals@nsem.ca>; NSEM Duty Staff <dutystaff@nsem.ca>
Subject: Fwd: Alertable for DriveBC

[EXTERNAL] This email came from an external source. Only open attachments or links that you are expecting from a known sender.

Hello Craig

Thank you for the chat.

Please see the info below from DNV communications.

Through the PDM, please advise. If you require any other info or a coordination call with NSEM, please reach out.

Thank you,

Emily

Get Outlook for iOS

<<https://can01.safelinks.protection.outlook.com/?url=https://aka.ms/o0ukef&data=05|01|Craig.Bland@gov.bc.ca|64749911b4804dedbae108dae1233664|6fdb52003d0d4a8ab036d3685e359adc|0|0|638069838598323314|Unknown|TWFPbGZsb3d8eyJWljojMC4wLjAwMDAiLCJQljojV2luMzliLCJBTil6lk1haWwiLCJXVCi6Mn0=|3000|||&sdata=1C1ibAYeEF2VIWfzuUatX09V8hupZDEOs9gcSb32CZs=&reserved=0>>

From: Carolyn Grafton <GraftonC@dnv.org>

Sent: Sunday, December 18, 2022 9:23:09 AM

To: Emily Dicken <EDicken@nsem.ca>; Simon Svane Als <SSvaneAls@nsem.ca>; NSEM Duty Staff <dutystaff@nsem.ca>

Subject: Alertable for DriveBC

Good morning;

Engineering and Comms for the DNV request that DriveBC issue an Alertable about the status of Highway 1 ASAP.

DriveBC reports on Twitter that WB lanes are closed on Hwy 1 between Mtn Hwy and Lynn Valley Road. Traffic media are advising travellers to avoid EB Hwy 1 in the same stretch.

Please advise people to stay off the roads until the storm has passed and crews have a chance to clear priority 1 routes.

Carolyn

FW: Hwy 15 update

From: Bhatti, Ashok A TRAN:EX
To: Elena.Farmer@gov.bc.ca
Sent: December 20, 2022 7:05:06 AM PST
Attachments: image001.png

Let ensure we have a good communications with Municipal Operations across Metro. If there are bulk emails we can send out to our contacts it will be well supported.

Thank you,

Ashok Bhatti, B.COMM. MBA

Executive Director

South Coast Region

Ministry of Transportation and Infrastructure

Visit us at:<http://www.gov.bc.ca/tran>

This e-mail is intended solely for the person or entity to which it is addressed and may contain confidential and privileged information. Any review, dissemination, copying, printing or other use of this e-mail by persons or entities other than the addressee is prohibited. If you have received this e-mail in error, please contact the sender immediately and delete the material from any computer.

From: Kerr, Ray <RKerr@surrey.ca>
Sent: December 20, 2022 5:49 AM
To: Bhatti, Ashok A TRAN:EX <Ashok.Bhatti@gov.bc.ca>
Cc: Neuman, Scott <SNeuman@surrey.ca>
Subject: Hwy 15 update

[EXTERNAL] This email came from an external source. Only open attachments or links that you are expecting from a known sender.

Ashok,

Just an FYI this morning. Semi-trucks and vehicles spun out everywhere along Hwy 15 with the worse sections being;

Hwy 15 north of 88 avenue no one can navigate the hill.

Hwy 15 north and south of 16 avenue

Thanks,

Ray

RAY KERR | MANAGER, ENGINEERING OPERATIONS

CITY OF SURREY

Engineering Department

6651 148 Street, Surrey, BC, Canada V3S 3C7

T 604.590.7271 | F 604.591.7836

www.surrey.ca

<<https://can01.safelinks.protection.outlook.com/?url=http://www.surrey.ca/&data=05|01|Ashok.Bhatti@gov.bc.ca|ebb9098e91d949c1154d08dae2910439|6fdb52003d0d4a8ab036d3685e359adc|0|0|638071409712246282|Unknown|TWFPbGZsb3d8eyJWljojMC4wLjAwMDAiLCJQIjojV2luMzliLCJBTiI6Ik1haWwiLCJXVCi6Mn0=|3000|||&sdata=kXoZWHZs/iGxqLUT7aQtabYzrjLL2tDIWNenstUo+o=&reserved=0>>

Re: For review/approval - Traffic advisory - don't travel

From: Farmer, Elena TRAN:EX <Elena.Farmer@gov.bc.ca>
To: Staite, Janelle A TRAN:EX <Janelle.Staite@gov.bc.ca>, Duffus, Robert GCPE:EX <Robert.Duffus@gov.bc.ca>, Pearson, Michael TRAN:EX <Michael.Pearson@gov.bc.ca>, Bhatti, Ashok A TRAN:EX <Ashok.Bhatti@gov.bc.ca>
Cc: Chambers, Craig GCPE:EX <Craig.Chambers@gov.bc.ca>
Sent: December 20, 2022 7:37:14 AM PST

Looks good.

Get Outlook for iOS <<https://aka.ms/o0ukef>>

From: Staite, Janelle A TRAN:EX <Janelle.Staite@gov.bc.ca>
Sent: Tuesday, December 20, 2022 7:24:03 AM
To: Duffus, Robert GCPE:EX <Robert.Duffus@gov.bc.ca>; Pearson, Michael TRAN:EX <Michael.Pearson@gov.bc.ca>; Bhatti, Ashok A TRAN:EX <Ashok.Bhatti@gov.bc.ca>; Farmer, Elena TRAN:EX <Elena.Farmer@gov.bc.ca>
Cc: Chambers, Craig GCPE:EX <Craig.Chambers@gov.bc.ca>
Subject: Re: For review/approval - Traffic advisory - don't travel

It's high levels but I'm good with it subject to Elena and Mike as best to get it out fast in terms of message to stay home

Are any island radios wanting to chat to help push the stay home message?

Get Outlook for iOS <<https://aka.ms/o0ukef>>

From: Duffus, Robert GCPE:EX <Robert.Duffus@gov.bc.ca>
Sent: Tuesday, December 20, 2022 7:20:40 AM
To: Staite, Janelle A TRAN:EX <Janelle.Staite@gov.bc.ca>; Pearson, Michael TRAN:EX <Michael.Pearson@gov.bc.ca>; Bhatti, Ashok A TRAN:EX <Ashok.Bhatti@gov.bc.ca>; Farmer, Elena TRAN:EX <Elena.Farmer@gov.bc.ca>
Cc: Chambers, Craig GCPE:EX <Craig.Chambers@gov.bc.ca>
Subject: For review/approval - Traffic advisory - don't travel

Hello all...attached is the draft traffic advisory for your review

Thanks

Rob

From: Staite, Janelle A TRAN:EX <Janelle.Staite@gov.bc.ca>
Sent: December 20, 2022 7:09 AM
To: Pearson, Michael TRAN:EX <Michael.Pearson@gov.bc.ca>; Duffus, Robert GCPE:EX <Robert.Duffus@gov.bc.ca>; Bhatti, Ashok A TRAN:EX <Ashok.Bhatti@gov.bc.ca>; Farmer, Elena TRAN:EX

<Elena.Farmer@gov.bc.ca>

Subject: Re: Weather & Conditions - south/middle island

For LMD

No counterflow at gmt

Active college drops at both bridges

Upwards of 25cm of snow in metro van

Can we call it essential travel only

Get Outlook for iOS <<https://aka.ms/o0ukef>>

From: Pearson, Michael TRAN:EX <Michael.Pearson@gov.bc.ca>

Sent: Tuesday, December 20, 2022 7:06 AM

To: Duffus, Robert GCPE:EX <Robert.Duffus@gov.bc.ca>; Staite, Janelle A TRAN:EX <janelle.staite@gov.bc.ca>;

Bhatti, Ashok A TRAN:EX <Ashok.Bhatti@gov.bc.ca>; Farmer, Elena TRAN:EX <Elena.Farmer@gov.bc.ca>

Subject: RE: Weather & Conditions - south/middle island

Hi Rob,

Yes please and not just for the Island but also the Lower Mainland.

Key messages:

- Stay home and avoid unnecessary travel today as crews continue to clear snow as quick as possible after last nights storm
- South island saw 30cm of snow overnight on the Malahat and across the region
- Much of the Central Island saw similar amounts of 20 + cm
- MC and CVSE have been out in full force all night with chain up enforcement
- Intersections, interchange ramps and turn lanes are still getting cleared.... i.e. this is where you could have trouble not the highway

Including everyone on this email for speedy approvals. Hoping to get this out by 7:30AM

Thanks!

Mike Pearson, P. Eng.

Director, Vancouver Island District

Michael.Pearson@gov.bc.ca

From: Duffus, Robert GCPE:EX <Robert.Duffus@gov.bc.ca>
Sent: December 20, 2022 6:39 AM
To: Pearson, Michael TRAN:EX <Michael.Pearson@gov.bc.ca>
Subject: RE: Weather & Conditions - south/middle island

Hi Michael, just seeing this. You're looking for a TA for the Island this morning?

From: Pearson, Michael TRAN:EX <Michael.Pearson@gov.bc.ca>
Sent: December 19, 2022 10:02 PM
To: Duffus, Robert GCPE:EX <Robert.Duffus@gov.bc.ca>
Subject: Fwd: Weather & Conditions - south/middle island

FYI

Get Outlook for iOS <<https://aka.ms/o0ukef>>

From: Pearson, Michael TRAN:EX <Michael.Pearson@gov.bc.ca>
Sent: Monday, December 19, 2022 9:56 PM
To: Bhatti, Ashok A TRAN:EX <Ashok.Bhatti@gov.bc.ca>; Staite, Janelle A TRAN:EX <Janelle.Staite@gov.bc.ca>;
Crebo, David GCPE:EX <David.Crebo@gov.bc.ca>
Subject: Re: Weather & Conditions - south/middle island

Hey,

Just checking on this updated TA that Kevin has asked for.

Short version is stay home and avoid unnecessary travel. Heavy snowfall is expected to last throughout the night and into the morning ending around noon.

The morning commute will be a challenge with the rate snow is currently falling as we are keeping up but it's a challenge.

Area most impacted is Nanaimo south to the Malahat and Highway 4 to Port Alberni.

Thanks, Mike

Get Outlook for iOS <<https://aka.ms/o0ukef>>

From: Richter, Kevin J TRAN:EX <Kevin.Richter@gov.bc.ca>
Sent: Monday, December 19, 2022 9:46 PM
To: Fleming, Rob MOTI:EX <Rob.Fleming@gov.bc.ca>; Harrison, Veronica MOTI:EX <Veronica.Harrison@gov.bc.ca>; Champion, Ella D MOTI:EX <Ella.D.Champion@gov.bc.ca>; Crebo, David GCPE:EX <David.Crebo@gov.bc.ca>; Duffus, Robert GCPE:EX <Robert.Duffus@gov.bc.ca>; Bhatti, Ashok A TRAN:EX <Ashok.Bhatti@gov.bc.ca>; Staite, Janelle A TRAN:EX <Janelle.Staite@gov.bc.ca>; Pearson, Michael TRAN:EX <Michael.Pearson@gov.bc.ca>; Krishna, Kaye TRAN:EX <Kaye.Krishna@gov.bc.ca>; Hayre, Courtney TRAN:EX <Courtney.Hayre@gov.bc.ca>; Herrett, Joshua TRAN:EX <Joshua.Herrett@gov.bc.ca>; Gedney, Vanessa R TRAN:EX <Vanessa.Gedney@gov.bc.ca>

Subject: Weather & Conditions - south/middle island

Heavy snow falling.

Slippery sections.

Conditions deteriorating.

MC deployed all equipment and sub contractors.

Talking to gcpe about a updated do not drive due to heavy snowfall

Get Outlook for iOS <<https://aka.ms/o0ukef>>

SA06 Update - Dec 20, 2022 - 830am

From: Kazemi, Maziar TRAN:EX <Maziar.Kazemi@gov.bc.ca>
To: Farmer, Elena TRAN:EX <Elena.Farmer@gov.bc.ca>
Cc: Bui, Phu TRAN:EX <Phu.Bui@gov.bc.ca>, Braun, Michael TRAN:EX <Michael.Braun@gov.bc.ca>, Smith, Grant TRAN:EX <Grant.Smith@gov.bc.ca>
Sent: December 20, 2022 8:28:58 AM PST
Attachments: image001.png, image003.png, image004.png, image002.png

Hey Elena,

- In SA06, experienced 26cm at the Alex Fraser Bridge overnight and 22cm at Port Mann bridge.
- Weather conditions included heavy snowfall, blowing snow, with very limited visibility in some areas. Temps are between -7 and -9. The MC was out in full force overnight plowing, sanding, and salting.
- All roads are snow covered. Many areas of compact snow with slippery sections. Plow trucks continue to cycle their plow blocks.
- Snowfall has begun to taper in many areas.
- The counterflow at Massey Tunnel on Hwy 99 was not implemented due to heavy snowfall with limited visibility and for safety.
- Traffic overall in the service area is light. Drivers appear to be driving to conditions for the most part.
- Hot spots include bridge approaches and steep grades.
- Currently, spun out vehicles on Hwy 15 NB between 88 St and 96 St (steep grade), Hwy 17 SB after 104th Ave towards Hwy 1 (steep grade), Hwy 15 NB between 16th Ave and 32nd Ave (steep grade), and Hwy 10 between Hwy 91 and Scott Rd (steep grade).
- Additional traffic management resources are out. Heavy wreckers are out assisting with spun out commercial vehicles. CVSE is out patrolling key routes.
- Multiple rounds of collar drops at AFB and PMB to clear accumulations. No icing concerns at this time.

Sincerely,

Maziar Kazemi

Operations Manager, Metro Vancouver

Ministry of Transportation and Infrastructure

Lower Mainland District Office

310-1500 Woolridge Street

Coquitlam, BC Canada V3K 0B8

direct line: 778-704-0024

fax: 604-527-2222

maziar.kazemi@gov.bc.ca

Pronouns I use: he, him, his

For the latest ministry news and information, click one of the icons below:

<<https://shiftintowinter.ca/>> <<http://tranbc.ca/>> <<http://www.drivebc.ca/>>

Highway Permits & Approvals website: <http://www.gov.bc.ca/highway-use-permits>

This communication (both the message and any attachments) is confidential and may be protected by solicitor client/privilege. It is intended only for the use of the person or persons to whom it is addressed. Any distribution, copying, or other use by anyone else is strictly prohibited. If you have received this communication in error, please notify me by telephone or by email and then destroy the email message and any attachments immediately.

Page 279 of 353 to/à Page 282 of 353

Withheld pursuant to/removed as

s.12 ; s.13 ; s.14 ; s.16

Page 283 of 353 to/à Page 285 of 353

Withheld pursuant to/removed as

s.12 ; s.13 ; s.16

LMD Road and Weather Update - Dec 20 0830 hrs

From: Farmer, Elena TRAN:EX <Elena.Farmer@gov.bc.ca>
To: Bhatti, Ashok A TRAN:EX <Ashok.Bhatti@gov.bc.ca>, Staite, Janelle A TRAN:EX <Janelle.Staite@gov.bc.ca>
Cc: Pearson, Michael TRAN:EX <Michael.Pearson@gov.bc.ca>
Sent: December 20, 2022 8:48:20 AM PST

Good morning,

LMD Road and Weather Update below:

SA04 – Howe Sound

- North Shore
- Currently, - 5 deg and snowing
- Significant snow accumulations (20 +cm) through the night but MC worked throughout plowing and applying abrasives.
- Full complement of plows are out and sub-contractors have been engaged.
- Mostly compact conditions with slippery areas. Traction is good.
- Materials are well stocked. No concerns.
- Traffic is very light.
- Observing the odd spun out vehicle but appears that prepared vehicles are having no issues.
- Sea to Sky
- Very cold artic outflow. -19 deg with a wind chill of -26 in Whistler. Snow flurries.
- MC has been out with full complement of equipment.
- Compact conditions throughout.
- MC focusing on plowing and sanding.
- No major issues to report.

SA05 – Sunshine Coast

- 4 deg and still snowing on the lower coast.
- Area saw significant accumulations overnight (5-15 cm).
- MC has been on with their full complement of resources.

- MC is focusing on maintaining H101. Mostly compact with some section restored to bare and black on Highway.
- Subs have been engaged to plow side road network.
- I understand that BC ferries has canceled sailing which will help with traffic
- Travel advisory on place.

SA06 – Metro Vancouver

- Significant snowfall overnight throughout Metro Vancouver, with 26cm at the Alex Fraser Bridge overnight and 22cm at Port Mann bridge.
- Weather conditions included heavy snowfall, blowing snow, with very limited visibility in some areas. Temps are between -7 and -9. The MC was out in full force overnight plowing, sanding, and salting.
- All roads are snow covered. Many areas of compact snow with slippery sections. Plow trucks continue to cycle their plow blocks.
- Snowfall has begun to taper in many areas.
- The counterflow at Massey Tunnel on Hwy 99 was not implemented due to heavy snowfall with limited visibility and for safety.
- Traffic overall in the service area is light. Drivers appear to be driving to conditions for the most part.
- Hot spots include bridge approaches and steep grades.
- Currently, spun out vehicles on Hwy 15 NB between 88 St and 96 St (steep grade), Hwy 17 SB after 104th Ave towards Hwy 1 (steep grade), Hwy 15 NB between 16th Ave and 32nd Ave (steep grade), and Hwy 10 between Hwy 91 and Scott Rd (steep grade).
- Additional traffic management resources are out. Heavy wreckers are out assisting with spun out commercial vehicles. CVSE is out patrolling key routes.
- Multiple rounds of collar drops at AFB and PMB to clear accumulations. No icing concerns at this time.

SA07 – Fraser Valley

- The Fraser Valley saw between 8-15cm of snow overnight.
- Roads have compact snow and slippery sections.
- Highway 1 in Abbotsford is experiencing high winds, blow snow and reducing visibility. Speeds have been dropped to 50 km/hr.
- High winds are creating issues with keep abrasives on the roadways.
- We have a few locations with compact icy sections. Primarily on Highway 1 from Hope to Yale. Due to the temperatures, -12, salt will not perform. MC is applying sand for traction. We have limited visibility on all highways due

to blowing snow. Sand is being blown off the road almost as fast as it put out. All available trucks working to maintain traction.

- Highway 1, Hope to Yale - average road temperatures -13. Light snow, reduced visibility due to blowing snow. Traction is ok at this time. Wind is blowing sand off the road and snow across the roadway.

Boston Bar - Road temperatures range from -13 at Yale to -20 at Jackass. Light snow. Roads are in good shape. No delays at this time.

- Highway 3, Hope to Sunday Summit, 9 Mile Hill is slightly snow covered for traction. Crews are actively sanding and plowing. Light to moderate snow with road temperatures between -12 and -16. No delays at this time.

Allison Pass - Road temperatures -19 with -23 in the air. Light to moderate snow fall. Snow covered roads with plowing in progress. Sand is freezing in the boxes, so it is difficult to get the sand on the road. No delays at this time.

- Highway 5, Hope to Portia, road temperatures ranged from -12 to -16. Light to moderate snow with blowing snow covering the road with light snow. Crews are doing what they can to plow the snow off the road. When the snow was pushed, it would blow back onto the road. Sand is being placed on hills and corners repeatedly due to the wind blowing it off. Traffic is light and flowing without delays.

Regards,

Elena

Elena Farmer (she/her/hers)

District Manager, Transportation

Lower Mainland District | South Coast Region

Ministry of Transportation and Infrastructure

1500 Woolridge Street, Coquitlam, BC V3K 0B8

P: 236-468-1935

E: Elena.Farmer@gov.bc.ca

FW: Caller: Veeda/ Would like to report HWY 1

From: Farmer, Elena TRAN:EX
To: Kazemi, Maziar TRAN:EX (Maziar.Kazemi@gov.bc.ca) <Maziar.Kazemi@gov.bc.ca>
Cc: Vasquez, Alina TRAN:EX (Alina.Vasquez@gov.bc.ca) <Alina.Vasquez@gov.bc.ca>
Sent: December 20, 2022 8:55:29 AM PST
Attachments: s.22 (40 seconds) Voice Mail.mp3

Please have someone give s.22 a call back regarding Highway 1 in Coquitlam.

Elena

Elena Farmer (she/her/hers)

District Manager, Transportation

Lower Mainland District | South Coast Region

Ministry of Transportation and Infrastructure

1500 Woolridge Street, Coquitlam, BC V3K 0B8

P: 236-468-1935

E: Elena.Farmer@gov.bc.ca

From: Vasquez, Alina TRAN:EX <Alina.Vasquez@gov.bc.ca>

Sent: December 19, 2022 3:50 PM

To: Farmer, Elena TRAN:EX <Elena.Farmer@gov.bc.ca>

Subject: Caller: s.22 / Would like to report HWY 1

Hello Elena

Could you kindly have someone call s.22 back?

She would like to discuss the condition of certain areas of HWY 1.

s.22

Thanks kindly.

Alina Vasquez

Documents Coordinator

Office of the Deputy Minister

Ministry of Transportation & Infrastructure

778-405-4110

PMB/AFB Snow & Ice Status Update - Dec 20 2022 0900hrs

From: Kazemi, Maziar TRAN:EX <Maziar.Kazemi@gov.bc.ca>
To: TRAN LMD Executive Incident Response <LMDEXINR@Victoria1.gov.bc.ca>
Cc: Braun, Michael TRAN:EX <Michael.Braun@gov.bc.ca>, Robertson, Steve TRAN:EX <Steve.Robertson@gov.bc.ca>, Drury, Krista TRAN:EX <Krista.Drury@gov.bc.ca>, Stevenson, Christie TRAN:EX <Christie.Stevenson@gov.bc.ca>, Bonhomme, Korry TRAN:EX <Korry.Bonhomme@gov.bc.ca>, Sekhon, Pravdeep TRAN:EX <Pravdeep.Sekhon@gov.bc.ca>, Mustaq, Andaleeb TRAN:EX <Andaleeb.Mustaq@gov.bc.ca>
Sent: December 20, 2022 9:05:07 AM PST
Attachments: image001.png, image003.png, image002.png, image004.png

Good afternoon, everyone,

We are currently at an ALERT LEVEL 4. Significant snowfall in Metro Vancouver overnight. Approximately 26cm new snow accumulations at AFB and 22cm new snow accumulations at PMB. Approximately 30cm overall across the region. Two (2x) rounds of collars dropped at both structures overnight. Snowfall has now finished. We may see trace to 1cm over the next 24 hours according to our forecast product but essentially no more precip until Thursday sometime in the late afternoon/evening.

We will be moving back down to an Alert Level 2 later this morning. Crews will remain on-station at bridges 24/7 reloading and prepared for any anticipated snowfall. We're continuing to monitor the forecast for any changes.

Please find below an update on the status of the Port Mann Bridge and Alex Fraser Bridges.

ALERT LEVEL 4

Weather Update:

Current Condition:

Cloudy, -8 degrees.

Discussion

In the short term, the current snowstorm underway should start wrapping up around 6-7am with snow starting to lighten up, then snow tapers off to flurries by 8-9am. For the rest of the day some occasional flurries will be possible anytime, but only minor new snow accums. Breezy E winds will continue all day with temps staying cold. Occasional flurries continue overnight into early Wednesday morning, then most of the day Wednesday is looking dry and cold.

Extended

Freezing rain concern needs to be monitored Friday and Fri night, especially for the Port Mann, but all areas should be turning to rain and warming above freezing on Saturday. Sluffing of snow may continue to be a concern well into Saturday. But we should return to a wet, rainy, milder pattern Sunday on into next week.

Control:

Low density low mass accumulations observed overnight and cleared.

2x rounds of collars dropped at PMB overnight (576 total collars dropped)

2x rounds of collars dropped at AFB overnight (384 total collars dropped)

Currently, no accumulations.

Work Crews:

Snow and Ice Management team are on-station and monitoring conditions.

Maintenance Contractor crews and Rope Access Technicians (RATs) are on-station at both bridges.

Traffic:

EB HOV lane closure in effect at Port Mann. Intermittent lane closures in both directions can be expected throughout the week at Port Mann to support snow and ice operations.

At Alex Fraser, a NB right lane closure is in effect.

Next Update:

Thursday when we go back to an Alert Level 3

Sincerely,

Maziar Kazemi

Operations Manager, Metro Vancouver

Ministry of Transportation and Infrastructure

Lower Mainland District Office

310-1500 Woolridge Street

Coquitlam, BC Canada V3K 0B8

direct line: 778-704-0024

fax: 604-527-2222

maziar.kazemi@gov.bc.ca

Pronouns I use: he, him, his

For the latest ministry news and information, click one of the icons below:

<<https://shiftintowinter.ca/>> <<http://tranbc.ca/>> <<http://www.drivebc.ca/>>

Highway Permits & Approvals website: <http://www.gov.bc.ca/highway-use-permits>

This communication (both the message and any attachments) is confidential and may be protected by solicitor client/privilege. It is intended only for the use of the person or persons to whom it is addressed. Any distribution, copying, or other use by anyone else is strictly prohibited. If you have received this communication in error, please notify me by telephone or by email and then destroy the email message and any attachments immediately.

RE: Winter communications on Twitter

From: Kazemi, Maziar TRAN:EX <Maziar.Kazemi@gov.bc.ca>
To: Bhatti, Ashok A TRAN:EX <Ashok.Bhatti@gov.bc.ca>, Lolacher, Russel TRAN:EX <Russel.Lolacher@gov.bc.ca>
Cc: Judson, Neil TRAN:EX <Neil.Judson@gov.bc.ca>, McLeod, Nancy TRAN:EX <Nancy.McLeod@gov.bc.ca>, Khorsandi, Porya TRAN:EX <Porya.Khorsandi@gov.bc.ca>
Sent: December 20, 2022 9:20:46 AM PST
Attachments: image003.png, image004.png, image005.png, image002.png

Hi Ashok,

We've done a few from our office this morning but we will continue.

https://twitter.com/TranBC_LMD/status/1605231461376065536?s=20&t=bfdhRGVpbkP2zWLTNufOkA

https://twitter.com/TranBC_LMD/status/1605233111230713856?s=20&t=bfdhRGVpbkP2zWLTNufOkA

https://twitter.com/TranBC_LMD/status/1605249787426926592?s=20&t=bfdhRGVpbkP2zWLTNufOkA

Sincerely,

Maziar Kazemi

Operations Manager, Metro Vancouver

Pronouns I use: he, him, his

Highway Permits & Approvals website:<http://www.gov.bc.ca/highway-use-permits>

This communication (both the message and any attachments) is confidential and may be protected by solicitor client/privilege. It is intended only for the use of the person or persons to whom it is addressed. Any distribution, copying, or other use by anyone else is strictly prohibited. If you have received this communication in error, please notify me by telephone or by email and then destroy the email message and any attachments immediately.

From: Bhatti, Ashok A TRAN:EX <Ashok.Bhatti@gov.bc.ca>
Sent: December 20, 2022 8:55 AM
To: Kazemi, Maziar TRAN:EX <Maziar.Kazemi@gov.bc.ca>; Lolacher, Russel TRAN:EX <Russel.Lolacher@gov.bc.ca>
Cc: Judson, Neil TRAN:EX <Neil.Judson@gov.bc.ca>; McLeod, Nancy TRAN:EX <Nancy.McLeod@gov.bc.ca>; Khorsandi, Porya TRAN:EX <Porya.Khorsandi@gov.bc.ca>
Subject: RE: Winter communications on Twitter
Importance: High

Maz, can we get any action shots around Cape Horn Interchange. Be great to show our efforts but also the extent of our infrastructure and what our contractor has to maintain.

PK any chance we can get the drone up with some live action shots or is the weather limiting?

Thank you,

Ashok Bhatti, B.COMM. MBA

Executive Director

South Coast Region

Ministry of Transportation and Infrastructure

Visit us at:<http://www.gov.bc.ca/tran>

This e-mail is intended solely for the person or entity to which it is addressed and may contain confidential and privileged information. Any review, dissemination, copying, printing or other use of this e-mail by persons or entities other than the addressee is prohibited. If you have received this e-mail in error, please contact the sender immediately and delete the material from any computer.

From: Kazemi, Maziar TRAN:EX <Maziar.Kazemi@gov.bc.ca>

Sent: December 20, 2022 8:42 AM

To: Lolacher, Russel TRAN:EX <Russel.Lolacher@gov.bc.ca>; Bhatti, Ashok A TRAN:EX <Ashok.Bhatti@gov.bc.ca>

Cc: Judson, Neil TRAN:EX <Neil.Judson@gov.bc.ca>; McLeod, Nancy TRAN:EX <Nancy.McLeod@gov.bc.ca>;

Khorsandi, Porya TRAN:EX <Porya.Khorsandi@gov.bc.ca>

Subject: RE: Winter communications on Twitter

Thanks Russel.

We were active overnight with the @TranBC_LMD twitter account.

Sincerely,

Maziar Kazemi

Operations Manager, Metro Vancouver

Pronouns I use: he, him, his

Highway Permits & Approvals website:<http://www.gov.bc.ca/highway-use-permits>

This communication (both the message and any attachments) is confidential and may be protected by solicitor client/privilege. It is intended only for the use of the person or persons to whom it is addressed. Any distribution, copying, or other use by anyone else is strictly prohibited. If you have received this communication in error, please notify me by telephone or by email and then destroy the email message and any attachments immediately.

From: Lolacher, Russel TRAN:EX <Russel.Lolacher@gov.bc.ca>

Sent: December 19, 2022 9:15 PM

To: Bhatti, Ashok A TRAN:EX <Ashok.Bhatti@gov.bc.ca>

Cc: Judson, Neil TRAN:EX <Neil.Judson@gov.bc.ca>; Kazemi, Maziar TRAN:EX <Maziar.Kazemi@gov.bc.ca>;

McLeod, Nancy TRAN:EX <Nancy.McLeod@gov.bc.ca>; Khorsandi, Porya TRAN:EX <Porya.Khorsandi@gov.bc.ca>

Subject: Re: Winter communications on Twitter

Thanks Ashok

We got great photos from the island - CVSE and maintenance. Shared them all to help get the message out.

Appreciated

R

On Dec 19, 2022, at 9:12 PM, Bhatti, Ashok A TRAN:EX <Ashok.Bhatti@gov.bc.ca> wrote:

I appreciate the updates today. I have asked the team to send in as many photos as possible. If there are particular shots you need that will help our messaging (especially around our maintenance contractor) please let us know.

Thank you,

Ashok Bhatti, B.COMM. MBA

Executive Director

South Coast Region

Ministry of Transportation and Infrastructure

Visit us at:<http://www.gov.bc.ca/tran>

This e-mail is intended solely for the person or entity to which it is addressed and may contain confidential and privileged information. Any review, dissemination, copying, printing or other use of this e-mail by persons or entities other than the addressee is prohibited. If you have received this e-mail in error, please contact the sender immediately and delete the material from any computer.

From: Judson, Neil TRAN:EX <Neil.Judson@gov.bc.ca>

Sent: December 19, 2022 12:12 PM

To: Bhatti, Ashok A TRAN:EX <Ashok.Bhatti@gov.bc.ca>; Kazemi, Maziar TRAN:EX <Maziar.Kazemi@gov.bc.ca>

Cc: Lolacher, Russel TRAN:EX <Russel.Lolacher@gov.bc.ca>; McLeod, Nancy TRAN:EX <Nancy.McLeod@gov.bc.ca>; Khorsandi, Porya TRAN:EX <Porya.Khorsandi@gov.bc.ca>

Subject: Winter communications on Twitter

Hi Ashok and Maziar,

I just want to give you an idea of some of our communications on Twitter. I also included a couple responses to give you an idea how we're responding to complaints. Both traffic advisories are shared, along with supporting blog etc. DriveBC is also being very active and we're sharing their tweets.

<image003.png>

<image004.png>

<image005.png>

<image006.png>

Neil Judson
Information Officer

Web & Social Media Services

Transportation Services Branch

B.C. Ministry of Transportation & Infrastructure

Office: 778-974-5345

Connect with us on:

<<https://www.tranbc.ca/>> <<http://www.facebook.com/home.php#!/TranBC>> <<https://www.flickr.com/photos/tranbc>>
<<https://twitter.com/#!/TranBC>> <<https://www.youtube.com/MinistryofTranBC>> <<https://pinterest.com/tranbc/>>
<<https://www.instagram.com/ministryoftranbc/?hl=en>>



Lower Mainland Dist. @TranBC_LMD · 1h

...

#BCHwy1 Plowing WB in #Coquitlam near Woolridge St heading towards the King Edward Overpass. Please be patient and do not pass plow trucks. Allow extra room for plows to work.



6

6

11





Lower Mainland Dist. @TranBC_LMD · 7m

...

#BCHwy1 Current conditions near Woolridge St. Highway Contractor crews are out in full force. Please be patient and allow room for plows to clear snow. #Coquitlam





Lower Mainland Dist. @TranBC_LMD · 1h

...

#BCHwy1 Current conditions on in the WB direction looking east from Woolridge St. Snow covered roads with compact sections. Watch for slippery sections. Left lanes recently plowed. Watch for changing road conditions. #Coquitlam



1



5



7



RE: MTO

From: Farmer, Elena TRAN:EX
To: Kazemi, Maziar TRAN:EX <Maziar.Kazemi@gov.bc.ca>, LMD Correspondence TRAN:EX <LMD.Correspondence@gov.bc.ca>
Sent: December 20, 2022 9:54:58 AM PST
Attachments: image001.png

Maybe reach out to Jerry Froese as he is the Manager for Traffic Engineering Policy.

Elena

Elena Farmer (she/her/hers)

District Manager, Transportation

Lower Mainland District | South Coast Region

Ministry of Transportation and Infrastructure

1500 Woolridge Street, Coquitlam, BC V3K 0B8
P: 236-468-1935

E: Elena.Farmer@gov.bc.ca

From: Kazemi, Maziar TRAN:EX <Maziar.Kazemi@gov.bc.ca>
Sent: December 14, 2022 4:37 PM
To: LMD Correspondence TRAN:EX <LMD.Correspondence@gov.bc.ca>; Farmer, Elena TRAN:EX <Elena.Farmer@gov.bc.ca>
Subject: RE: MTO

Hi Elena. I've reached out to WS for recent messaging on our tolling policy.

Is there anyone from our policy group that you suggest I speak to about this?

Sincerely,

Maziar Kazemi

Operations Manager, Metro Vancouver

Pronouns I use: he, him, his

Highway Permits & Approvals website:<http://www.gov.bc.ca/highway-use-permits>

This communication (both the message and any attachments) is confidential and may be protected by solicitor client/privilege. It is intended only for the use of the person or persons to whom it is addressed. Any distribution, copying, or other use by anyone else is strictly prohibited. If you have received this communication in error, please notify me by telephone or by email and then destroy the email message and any attachments immediately.

From: LMD Correspondence TRAN:EX <LMD.Correspondence@gov.bc.ca>
Sent: December 14, 2022 4:15 PM
To: Farmer, Elena TRAN:EX <Elena.Farmer@gov.bc.ca>; Kazemi, Maziar TRAN:EX <Maziar.Kazemi@gov.bc.ca>
Cc: LMD Correspondence TRAN:EX <LMD.Correspondence@gov.bc.ca>
Subject: RE: MTO

Good afternoon Maziar,

Assigned to you for response.

Thanks,

Tina

From: Farmer, Elena TRAN:EX <Elena.Farmer@gov.bc.ca>
Sent: December 9, 2022 12:41 PM
To: LMD Correspondence TRAN:EX <LMD.Correspondence@gov.bc.ca>
Subject: FW: MTO

Please assign for response.

Elena Farmer (she/her/hers)

District Manager, Transportation

Lower Mainland District | South Coast Region

Ministry of Transportation and Infrastructure

1500 Woolridge Street, Coquitlam, BC V3K 0B8
P: 236-468-1935

E: Elena.Farmer@gov.bc.ca

From: s.22
Sent: December 9, 2022 11:32 AM
To: Farmer, Elena TRAN:EX <Elena.Farmer@gov.bc.ca>
Subject: Re: MTO

[EXTERNAL] This email came from an external source. Only open attachments or links that you are expecting from a known sender.

Thanks Elena. That would be great.

It is attached. Feel free to forward. Would love to eventually hear what you think.

s.22

On Fri, Dec 9, 2022 at 8:41 AM Farmer, Elena TRAN:EX <Elena.Farmer@gov.bc.ca> wrote:

Good morning^{s.22}

You can submit your letter to me and I can redirect it if needed.

Regards,

Elena

Elena Farmer (she/her/hers)

District Manager, Transportation

Lower Mainland District | South Coast Region

Ministry of Transportation and Infrastructure

1500 Woolridge Street, Coquitlam, BC V3K 0B8

P: 236-468-1935

E: Elena.Farmer@gov.bc.ca

From: s.22

Sent: December 8, 2022 11:41 AM

To: Farmer, Elena TRAN:EX <Elena.Farmer@gov.bc.ca>

Subject: MTO

[EXTERNAL] This email came from an external source. Only open attachments or links that you are expecting from a known sender.

Dear Elena, hope you are well. This is s.22 writing. I noted your email address on the Ministry of Transportation website, as the District Manager for the Lower Mainland region. I wanted to submit a letter (as a private citizen) with a suggestion for the Ministry to consider. Should I forward my letter to you? Or is there a general "inbox" for feedback for the Ministry?

RE: NCR 410 - Snow removal response time

From: Farmer, Elena TRAN:EX
To: Kazemi, Maziar TRAN:EX <Maziar.Kazemi@gov.bc.ca>
Sent: December 20, 2022 10:40:58 AM PST
Attachments: image001.png

Thank you.

Elena Farmer (she/her/hers)

District Manager, Transportation

Lower Mainland District | South Coast Region

Ministry of Transportation and Infrastructure

1500 Woolridge Street, Coquitlam, BC V3K 0B8
P: 236-468-1935

E: Elena.Farmer@gov.bc.ca

From: Kazemi, Maziar TRAN:EX <Maziar.Kazemi@gov.bc.ca>
Sent: December 16, 2022 6:11 PM
To: Farmer, Elena TRAN:EX <Elena.Farmer@gov.bc.ca>
Subject: FW: NCR 410 - Snow removal response time
Importance: High

s.21

Sincerely,

Maziar Kazemi

Operations Manager, Metro Vancouver

Pronouns I use: he, him, his

Highway Permits & Approvals website:<http://www.gov.bc.ca/highway-use-permits>

This communication (both the message and any attachments) is confidential and may be protected by solicitor client/privilege. It is intended only for the use of the person or persons to whom it is addressed. Any distribution, copying, or other use by anyone else is strictly prohibited. If you have received this communication in error, please notify me by telephone or by email and then destroy the email message and any attachments immediately.

From: Kazemi, Maziar TRAN:EX <Maziar.Kazemi@gov.bc.ca>
Sent: December 16, 2022 1:14 PM
To: XT:MTCon, Sarn Banwait TRAN:IN <sbanwait@mainroad.ca>
Subject: RE: NCR 410 - Snow removal response time
Importance: High

Thank you. Hope you're feeling better. I will share with the team.

Sincerely,

Maziar Kazemi

Operations Manager, Metro Vancouver

Pronouns I use: he, him, his

Highway Permits & Approvals website:<http://www.gov.bc.ca/highway-use-permits>

This communication (both the message and any attachments) is confidential and may be protected by solicitor client/privilege. It is intended only for the use of the person or persons to whom it is addressed. Any distribution, copying, or other use by anyone else is strictly prohibited. If you have received this communication in error, please notify me by telephone or by email and then destroy the email message and any attachments immediately.

From: Sarn Banwait <sbanwait@mainroad.ca>
Sent: December 16, 2022 12:06 PM
To: Kazemi, Maziar TRAN:EX <Maziar.Kazemi@gov.bc.ca>
Subject: NCR 410 - Snow removal response time

[EXTERNAL] This email came from an external source. Only open attachments or links that you are expecting from a known sender.

Hello Maziar,

Please see the attached NCR I have issued to our operations division regarding response time on snow removal for class C - Barnston island.

Please contact me if you have any questions or comments.

Thank you,

Sarn Banwait

Quality Manager

Clean Up Strategy for Today - Priority PMH1 West

From: Kazemi, Maziar TRAN:EX <Maziar.Kazemi@gov.bc.ca>
To: Farmer, Elena TRAN:EX <Elena.Farmer@gov.bc.ca>
Sent: December 20, 2022 10:54:12 AM PST
Attachments: image002.png, image003.png, image004.png, image001.png

Hi Elena,

As discussed, here is the clean up strategy for today:

- An echelon plow formation of three trucks is currently on Highway 7 at 280th.
- The plan is to re-assign these resources to Highway 1 mainly to break down the compact snow in the Burnaby Lake stretch.
- The trucks will plow WB Highway 7 and connect to Highway 1 (likely at Cape Horn interchange) and continue west on Highway 1 towards 1st Ave. They will spend a considerable amount of time in this west end of Highway 1 (continuously working between Brunette and First Avenue).
- This is in addition to the 4 dedicated plow trucks on PMH1 west of Port Mann
- This is our priority location currently due to the traffic volumes in this section and the public concerns from yesterday.

In addition to this, Mainroad is continuing to clean up accumulations on all routes. With how dry the snow is, we have a higher confidence that the clean up will go quicker before potential extreme cold tonight.

Sincerely,

Maziar Kazemi

Operations Manager, Metro Vancouver

Ministry of Transportation and Infrastructure

Lower Mainland District Office

310-1500 Woolridge Street

Coquitlam, BC Canada V3K 0B8

direct line: 778-704-0024

fax: 604-527-2222

maziar.kazemi@gov.bc.ca

Pronouns I use: he, him, his

For the latest ministry news and information, click one of the icons below:

<<https://shiftintowinter.ca/>> <<http://tranbc.ca/>> <<http://www.drivebc.ca/>>

Highway Permits & Approvals website: <http://www.gov.bc.ca/highway-use-permits>

This communication (both the message and any attachments) is confidential and may be protected by solicitor client/privilege. It is intended only for the use of the person or persons to whom it is addressed. Any distribution, copying, or other use by anyone else is strictly prohibited. If you have received this communication in error, please notify me by telephone or by email and then destroy the email message and any attachments immediately.

FW: Access / Sight Lines Question

From: Farmer, Elena TRAN:EX
To: Kazemi, Maziar TRAN:EX (Maziar.Kazemi@gov.bc.ca)
<Maziar.Kazemi@gov.bc.ca>
Sent: December 20, 2022 11:08:24 AM PST
Attachments: image002.png, image004.jpg, image001.png

Maziar,

For your response, please.

Elena

Elena Farmer (she/her/hers)

District Manager, Transportation

Lower Mainland District | South Coast Region

Ministry of Transportation and Infrastructure

1500 Woolridge Street, Coquitlam, BC V3K 0B8
P: 236-468-1935

E: Elena.Farmer@gov.bc.ca

From: s.22
Sent: December 20, 2022 8:25 AM
To: Farmer, Elena TRAN:EX <Elena.Farmer@gov.bc.ca>
Subject: Access / Sight Lines Question

[EXTERNAL] This email came from an external source. Only open attachments or links that you are expecting from a known sender.

Good morning,

I have a question regarding access and sight lines. I am the owner s.22
s.22 I have attached s.22 to try to help explain my question.

At s.22, we are looking to create heavy truck parking and the only reasonable access point is near the intersection (where I did not close my traced line).

I have reviewed the design documents for the highway widening project, and it seems the highway will come divided at this intersection, limiting traffic to right turns in and out.

I believe the angular road allowance is MoTI property? Can you confirm if it is MoTI or municipal?

My proposal would be to remove the vegetation from the area circled, and create a gravel surface. The intersection is quite hidden, and I think removing the vegetation would improve sight lines and be much safer for all road users. I

propose to leave the highways ditch intact so that this would not become a pull-out. I further propose to adjust grade as required to merge a gravelled surface with my existing driveway, so that my trucks could pull in and then safely back into the yard parking when safe to do so.

The new highway widening project also involves replacing a culvert across my driveway, so a portion of this proposed area will be cleared by others for construction regardless.

Can you advise on the steps I would need to take to formally propose this?

Thank you,

s.22

President

s.22

Page 309 of 353

Withheld pursuant to/removed as

s.13 ; s.22

RE: SA06 Highlights and Challenges

From: Kazemi, Maziar TRAN:EX <Maziar.Kazemi@gov.bc.ca>
To: Farmer, Elena TRAN:EX <Elena.Farmer@gov.bc.ca>
Sent: December 20, 2022 11:44:03 AM PST
Attachments: image006.png, image008.png, image009.png, image007.png, image005.png

Some other challenges:

- Due to extreme weather conditions and significant snowfall received overnight the Alex Fraser counterflow (zipper) cannot be safely implemented today. Configuration will remain 4 lanes NB 3 lanes SB.
- Counterflow at George Massey Tunnel wasn't implemented today due to extreme weather conditions including significant snowfall and blowing snow with limited visibility. Counterflow is not expected to be implemented during the PM Peak for safety.

Sincerely,

Maziar Kazemi

Operations Manager, Metro Vancouver

Pronouns I use: he, him, his

Highway Permits & Approvals website:<http://www.gov.bc.ca/highway-use-permits>

This communication (both the message and any attachments) is confidential and may be protected by solicitor client/privilege. It is intended only for the use of the person or persons to whom it is addressed. Any distribution, copying, or other use by anyone else is strictly prohibited. If you have received this communication in error, please notify me by telephone or by email and then destroy the email message and any attachments immediately.

From: Kazemi, Maziar TRAN:EX <Maziar.Kazemi@gov.bc.ca>
Sent: December 20, 2022 11:39 AM
To: Farmer, Elena TRAN:EX <Elena.Farmer@gov.bc.ca>
Subject: SA06 Highlights and Challenges

Hi Elena,

The highlights in SA06 are as follows:

- Because drier low density snowfall crews are making progress clearing accumulations and getting to bare pavement in areas
- We've been able to do echelon plowing due to lower volumes.
- We've started this on Highway 7 in Maple Ridge working our way to Highway 1.
- We will be focussing on the western portions of the Port Mann Highway 1 corridor (Burnaby/Vancouver) where there are some sections of compact snow which have been a challenge for some drivers.

- The Tow plow is making good progress on Hwy 99 cycling from Oak St Bridge to the Border.
- We've been able to shift focus at the Alex Fraser Bridge and Port Mann Bridge from accumulation removal to reloading and preparing for next event.

The challenges in SA06 are as follows:

- Hwy 15 NB at 8th Ave to 16th Ave closed for jackknifed semi. CVSE are on scene. Specialized equipment en route.
- Queensborough NB 1 lane is getting through. Spun out vehicle with summer tires.

Sincerely,

Maziar Kazemi

Operations Manager, Metro Vancouver

Ministry of Transportation and Infrastructure

Lower Mainland District Office

310-1500 Woolridge Street

Coquitlam, BC Canada V3K 0B8

direct line: 778-704-0024

fax: 604-527-2222

maziar.kazemi@gov.bc.ca

Pronouns I use: he, him, his

For the latest ministry news and information, click one of the icons below:

<<https://shiftintowinter.ca/>> <<http://tranbc.ca/>> <<http://www.drivebc.ca/>>

Highway Permits & Approvals website: <http://www.gov.bc.ca/highway-use-permits>

This communication (both the message and any attachments) is confidential and may be protected by solicitor client/privilege. It is intended only for the use of the person or persons to whom it is addressed. Any distribution, copying, or other use by anyone else is strictly prohibited. If you have received this communication in error, please notify me by telephone or by email and then destroy the email message and any attachments immediately.

Re: Winter Weather/Conditions Update - South Coast Region

From: Bhatti, Ashok A TRAN:EX <Ashok.Bhatti@gov.bc.ca>
To: Farmer, Elena TRAN:EX <Elena.Farmer@gov.bc.ca>
Sent: December 20, 2022 12:30:12 PM PST

Will correct

Get Outlook for iOS <<https://aka.ms/o0ukef>>

From: Farmer, Elena TRAN:EX <Elena.Farmer@gov.bc.ca>
Sent: Tuesday, December 20, 2022 12:19:13 PM
To: Bhatti, Ashok A TRAN:EX <Ashok.Bhatti@gov.bc.ca>
Subject: RE: Winter Weather/Conditions Update - South Coast Region

Ashok,

I just want to clarify as I think below is a bit misleading on the progress in LMD. Only the North Shore highways are bare and black. We do see pavement in some areas in Metro Van (i.e. H1 HOV and fast lane WB is bare), but still lots more work to get to bare and black area wide. Still seeing lots of compact snow with slippery sections in both Metro Van and Fraser Valley.

Elena

Elena Farmer (she/her/hers)

District Manager, Transportation

Lower Mainland District | South Coast Region

Ministry of Transportation and Infrastructure

1500 Woolridge Street, Coquitlam, BC V3K 0B8
P: 236-468-1935

E: Elena.Farmer@gov.bc.ca

From: Bhatti, Ashok A TRAN:EX <Ashok.Bhatti@gov.bc.ca>
Sent: December 20, 2022 12:14 PM
To: Richter, Kevin J TRAN:EX <Kevin.Richter@gov.bc.ca>
Cc: Staite, Janelle A TRAN:EX <Janelle.Staite@gov.bc.ca>; Chambers, Craig GCPE:EX <Craig.Chambers@gov.bc.ca>; Duffus, Robert GCPE:EX <Robert.Duffus@gov.bc.ca>; Lolacher, Russel TRAN:EX <Russel.Lolacher@gov.bc.ca>; Sinclair, Murray GCPE:EX <Murray.Sinclair@gov.bc.ca>; Farmer, Elena TRAN:EX <Elena.Farmer@gov.bc.ca>; Pearson, Michael TRAN:EX <Michael.Pearson@gov.bc.ca>
Subject: Winter Weather/Conditions Update - South Coast Region

Kevin his a mid-day update:

Lower Mainland.

For the most part snow has stopped in LMD, with sporadic flurries in Metro Vancouver and the Fraser Valley. Could see small flurries return tonight in forecast but it varies depending on location.

MC's continue to work to clear all the major routes.

Drier low-density snowfall has allowed crews to make progress on clearing accumulation in Metro Vancouver.

Many major routes in the lower mainland are bare and black throughout. We are Prioritizing major routes before we transition to the secondary Routes.

We have Continued Challenges on select locations on Highway 15, Hwy 91A for earlier vehicles that we are working to clear. Fraser Valley still has high winds and blowing snow reducing visibility. Highway 5 is closed between Hope and Othello Northbound due to an MVI. Crews On scene.

Vancouver Island:

The storm hit the Central and South Island hardest and very little in the North Island.

Numbered routes are all caught up, bare and wet. Focus now is on cleaning up turning lanes, ramps and moving to secondary routes (School bus and Transit routes).

Forecast is calling for more snow tonight starting around 6pm and going until midnight; about 5cm forecast.

Malahat Chain up Protocol was implemented successfully and we had ZERO vehicles spun out or abandoned on the Malahat – typically we have a least a couple so this is a testament to having CVSE presence at the right time. Our Maintenance contractor had 4 trucks (and for a period 5) to just the Malahat corridor to stay on top of it

Travel lanes on all numbered routes remained in spec for the duration of the storm; turn lanes etc are second priority and we are catching up on those now.

Get Outlook for iOS <<https://aka.ms/o0ukef>>

You Are Appreciated

From: Bhatti, Ashok A TRAN:EX <Ashok.Bhatti@gov.bc.ca>
To: TRAN SCR LMD Admin Staff <LMDADMIN@Victoria1.gov.bc.ca>, TRAN SCR LMD Coquitlam <TSCRNEWE@Victoria1.gov.bc.ca>, TRAN SCR LMD Fraser Valley <TSCRCHIL@Victoria1.gov.bc.ca>, TRAN SCR LMD Howe Sound <TSCRNEHS@Victoria1.gov.bc.ca>, TRAN SCR LMD Sunshine Coast <TRLMDSCR@Victoria1.gov.bc.ca>, TRAN SCR LMD Managers <LMDMGRS@Victoria1.gov.bc.ca>, Adams, Amelia TRAN:EX <Amelia.Adams@gov.bc.ca>, Atchison, Derek TRAN:EX <Derek.Atchison@gov.bc.ca>, Benisky, Marisa TRAN:EX <Marisa.Benisky@gov.bc.ca>, Berube, Katrina TRAN:EX <Katrina.Berube@gov.bc.ca>, Boyden, Brad TRAN:EX <Brad.Boyden@gov.bc.ca>, Bradley, Sandra TRAN:EX <Sandra.Bradley@gov.bc.ca>, Breysen, Tara TRAN:EX <Tara.Breysen@gov.bc.ca>, Brown, Susan M TRAN:EX <Susan.M.Brown@gov.bc.ca>, Carter, Kevin TRAN:EX <Kevin.Carter@gov.bc.ca>, Corner, Cindy L TRAN:EX <Cindy.L.Corner@gov.bc.ca>, Cousens, Ashley TRAN:EX <Ashley.Cousens@gov.bc.ca>, Danvers, Ron G TRAN:EX <Ron.Danvers@gov.bc.ca>, Dyer, Jennifer TRAN:EX <Jennifer.Dyer@gov.bc.ca>, Ethier, Kristine TRAN:EX <Kristine.Ethier@gov.bc.ca>, Gerow, Ryan TRAN:EX <Ryan.Gerow@gov.bc.ca>, Gustafson, Ryan TRAN:EX <Ryan.Gustafson@gov.bc.ca>, Haley, Shawn TRAN:EX <Shawn.Haley@gov.bc.ca>, Jones, Michelle TRAN:EX <Michelle.Jones@gov.bc.ca>, Kelly, Brendan TRAN:EX <Brendan.Kelly@gov.bc.ca>, Kirk, Kari TRAN:EX <Kari.Kirk@gov.bc.ca>, Laurent, Francois TRAN:EX <Francois.Laurent@gov.bc.ca>, Leaman, Erika TRAN:EX <Erika.Leaman@gov.bc.ca>, Learn, Jessica TRAN:EX <Jessica.Learn@gov.bc.ca>, LeRue, David TRAN:EX <David.LeRue@gov.bc.ca>, MacLeod, Tammy TRAN:EX <Tammy.MacLeod@gov.bc.ca>, McRae, Tallina TRAN:EX <Tallina.McRae@gov.bc.ca>, Miskulin, James TRAN:EX <James.Miskulin@gov.bc.ca>, Neufeld-Cumming, Yannick TRAN:EX <Yannick.Neufeld-Cumming@gov.bc.ca>, O'Brien, Debbie TRAN:EX <Debbie.O'Brien@gov.bc.ca>, Page, Owen TRAN:EX <Owen.Page@gov.bc.ca>, Pearson, Michael TRAN:EX <Michael.Pearson@gov.bc.ca>, Pirozzini, Bryce TRAN:EX <Bryce.Pirozzini@gov.bc.ca>, Price, Jirina TRAN:EX <Jirina.Price@gov.bc.ca>, Ray, Jeff TRAN:EX <Jeff.Ray@gov.bc.ca>, Schneider, Nikki TRAN:EX <Nikki.Schneider@gov.bc.ca>, Spilde, Dana TRAN:EX <Dana.Spilde@gov.bc.ca>, Thomas, Daveena L TRAN:EX <Daveena.Thomas@gov.bc.ca>, Thompson, Gilbert TRAN:EX <Gilbert.Thompson@gov.bc.ca>, Thompson, Tammy TRAN:EX <Tammy.Thompson@gov.bc.ca>, Timpa, Arzeena TRAN:EX <Arzeena.Timpa@gov.bc.ca>, Truant, Kellen TRAN:EX <Kellen.Truant@gov.bc.ca>
Cc: Pearson, Michael TRAN:EX <Michael.Pearson@gov.bc.ca>, Farmer, Elena TRAN:EX <Elena.Farmer@gov.bc.ca>, Price, Amanda TRAN:EX <Amanda.Price@gov.bc.ca>, Staite, Janelle A TRAN:EX <Janelle.Staite@gov.bc.ca>
Sent: December 20, 2022 1:05:21 PM PST
Attachments: image001.png

Afternoon everyone,

As we work our way through this winter event, Janelle and I want you all to know that YOU ARE APPRECIATED. The work you are doing, the hours you have been putting in working late, out on the roads monitoring conditions, working with our contractors matters and YOU are making an impact. There is a lot of media right now looking for individuals to point to when things aren't going well. We can't get it perfect each time. Tens of thousands of commutes are still happening as people travel for essential purposes and those trips are happening without incident because you have made safety your priority. For the few individuals who can't make it and are being challenged on our highways, the messaging from myself, Janelle, Kevin and the Minister has been clear, "The goal is driver preparedness". Know before you go, have good winter tires with good tread depth, and drive for the conditions of the road. You are a difference maker and Janelle and I see it with your response, pictures, and the timeliness of your calls and replies.

Debriefs post even will come and we will all learn from this event as we have learned from others. Don't let the few take away from all your hard work and dedication. Please also find that time to be with your family, friends, and other loved ones. Ensure you are taking care of each other and you are taking breaks. You all deserve it.

Thank you for your dedication and passion. It is not going unnoticed.

Thank you,

Ashok Bhatti, B.COMM. MBA

Executive Director

South Coast Region

Ministry of Transportation and Infrastructure

PH: +1 (236) 468-1911

Email: Ashok.Bhatti@gov.bc.ca

Visit us at:<http://www.gov.bc.ca/tran>

This e-mail is intended solely for the person or entity to which it is addressed and may contain confidential and privileged information. Any review, dissemination, copying, printing or other use of this e-mail by persons or entities other than the addressee is prohibited. If you have received this e-mail in error, please contact the sender immediately and delete the material from any computer.

TOUGH
TIMES

don't last

TOUGH
TEAMS
DO

FW: YVR Operational Update -- 1100

From: Bhatti, Ashok A TRAN:EX
To: Elena.Farmer@gov.bc.ca
Sent: December 20, 2022 1:20:55 PM PST

FYI.

Thank you,

Ashok Bhatti, B.COMM. MBA

Executive Director

South Coast Region

Ministry of Transportation and Infrastructure

Visit us at:<http://www.gov.bc.ca/tran>

This e-mail is intended solely for the person or entity to which it is addressed and may contain confidential and privileged information. Any review, dissemination, copying, printing or other use of this e-mail by persons or entities other than the addressee is prohibited. If you have received this e-mail in error, please contact the sender immediately and delete the material from any computer.

From: Trevor Boudreau <Trevor_Boudreau@yvr.ca>
Sent: December 20, 2022 11:16 AM
To: Krishna, Kaye TRAN:EX <Kaye.Krishna@gov.bc.ca>
Cc: Bhatti, Ashok A TRAN:EX <Ashok.Bhatti@gov.bc.ca>; Richter, Kevin J TRAN:EX <Kevin.Richter@gov.bc.ca>
Subject: YVR Operational Update -- 1100

[EXTERNAL] This email came from an external source. Only open attachments or links that you are expecting from a known sender.

Good morning MOTI colleagues,

A quick update on the ongoing operational impacts we're seeing at YVR due to the unexpected and unprecedented snow event overnight. We are going to see continued operational impact today and the week ahead—but it has been very heartening to see the airport community come together to support passengers. Have also shared this with Premier's Office and IGRS.

Operational Update – 1130

The winter storm that hit Metro Vancouver and Southern British Columbia overnight continues to have an unprecedented effect on flights and operations at YVR. Airport employees as well as our partners are doing everything possible to assist those currently in the terminal.

•Flights are slowly beginning to depart, however cancellations and delays will persist for the majority of scheduled flights

·Flights that were previously grounded with passengers onboard have now all returned to gate and passengers are off the aircraft.

·Staff are working to provide food, water, and any other needed assistance to passengers throughout the terminal buildings.

·We continue to work with ground transportation providers to assist people leaving the terminal to get where they need to go safely given road conditions.

·Terminal operations and our partners are facing challenges getting additional staff to the airport.

·While it isn't currently snowing, de-icing operations continue.

We recognize the impact this has had on travellers, many of whom were onboard aircraft for a number of hours overnight. We are incredibly grateful for their patience as well as the professionalism of flight crews as ground teams worked to get people off aircraft as soon as was safely possible.

Passengers who are expecting to fly today and this week are advised to check with their airline directly on the status of their flight. We are asking people to please not come to YVR if you do not absolutely need too.

We will provide further information as it becomes available with updates to follow throughout the day. For latest flight information and operational updates, passengers can also visit [YVR.ca](https://www.yvr.ca).

Thanks and let me know if you have any questions.

Trevor Boudreau (he/him/il)

Director, Government Relations | Directeur des relations gouvernementales

Vancouver Airport Authority | Administration de l'aéroport de Vancouver

Mobile: 778.839.4671

RE: Winter Conditions - Update

From: Farmer, Elena TRAN:EX
To: Bhatti, Ashok A TRAN:EX <Ashok.Bhatti@gov.bc.ca>, Pearson, Michael TRAN:EX <Michael.Pearson@gov.bc.ca>
Cc: Staite, Janelle A TRAN:EX <Janelle.Staite@gov.bc.ca>
Sent: December 20, 2022 4:16:16 PM PST

Here are the numbers from SA04 & SA05:

SA04

- Brine - 20,000 L
- Salt – 125 tonnes
- Sand – 80 tonnes

SA05

- Brine - 50,000 L
- Salt – 220 tonnes
- Sand – 200 tonnes

Elena Farmer (she/her/hers)

District Manager, Transportation

Lower Mainland District | South Coast Region

Ministry of Transportation and Infrastructure

1500 Woolridge Street, Coquitlam, BC V3K 0B8

P: 236-468-1935

E: Elena.Farmer@gov.bc.ca

From: Farmer, Elena TRAN:EX
Sent: December 20, 2022 1:04 PM
To: Bhatti, Ashok A TRAN:EX <Ashok.Bhatti@gov.bc.ca>; Pearson, Michael TRAN:EX <Michael.Pearson@gov.bc.ca>
Cc: Staite, Janelle A TRAN:EX <Janelle.Staite@gov.bc.ca>
Subject: RE: Winter Conditions - Update

Here are amounts from SA06 & SA07:

SA06

- Salt – 2,000 tonnes
- Sand – 600 tonnes
- Brine 150,000 L
- CaCl – 15,000 L

SA07

- Sand - 6,000 tonnes

Elena Farmer (she/her/hers)

District Manager, Transportation

Lower Mainland District | South Coast Region

Ministry of Transportation and Infrastructure

1500 Woolridge Street, Coquitlam, BC V3K 0B8
P: 236-468-1935

E: Elena.Farmer@gov.bc.ca

From: Bhatti, Ashok A TRAN:EX <Ashok.Bhatti@gov.bc.ca>
Sent: December 20, 2022 12:50 PM
To: Pearson, Michael TRAN:EX <Michael.Pearson@gov.bc.ca>; Farmer, Elena TRAN:EX <Elena.Farmer@gov.bc.ca>
Cc: Staite, Janelle A TRAN:EX <Janelle.Staite@gov.bc.ca>
Subject: Re: Winter Conditions - Update

Minister meeting at 1:15. Send what you can pls.

Get Outlook for iOS <<https://aka.ms/o0ukef>>

From: Pearson, Michael TRAN:EX <Michael.Pearson@gov.bc.ca>
Sent: Tuesday, December 20, 2022 12:49:16 PM
To: Bhatti, Ashok A TRAN:EX <Ashok.Bhatti@gov.bc.ca>; Farmer, Elena TRAN:EX <Elena.Farmer@gov.bc.ca>
Cc: Staite, Janelle A TRAN:EX <Janelle.Staite@gov.bc.ca>
Subject: Re: Winter Conditions - Update

Yes that is correct

Get Outlook for iOS <<https://aka.ms/o0ukef>>

From: Bhatti, Ashok A TRAN:EX <Ashok.Bhatti@gov.bc.ca>

Sent: Tuesday, December 20, 2022 12:47:51 PM
To: Pearson, Michael TRAN:EX <Michael.Pearson@gov.bc.ca>; Farmer, Elena TRAN:EX <Elena.Farmer@gov.bc.ca>
Cc: Staite, Janelle A TRAN:EX <Janelle.Staite@gov.bc.ca>
Subject: Re: Winter Conditions - Update

For reference is this since Sunday night?

Get Outlook for iOS <<https://aka.ms/o0ukef>>

From: Pearson, Michael TRAN:EX <Michael.Pearson@gov.bc.ca>
Sent: Tuesday, December 20, 2022 12:26:15 PM
To: Bhatti, Ashok A TRAN:EX <Ashok.Bhatti@gov.bc.ca>; Farmer, Elena TRAN:EX <Elena.Farmer@gov.bc.ca>
Cc: Staite, Janelle A TRAN:EX <Janelle.Staite@gov.bc.ca>
Subject: Re: Winter Conditions - Update

Damn auto correct...

2400 Kms of plowing

Get Outlook for iOS <<https://aka.ms/o0ukef>>

From: Pearson, Michael TRAN:EX <Michael.Pearson@gov.bc.ca>
Sent: Tuesday, December 20, 2022 12:25 PM
To: Bhatti, Ashok A TRAN:EX <Ashok.Bhatti@gov.bc.ca>; Farmer, Elena TRAN:EX <Elena.Farmer@gov.bc.ca>
Cc: Staite, Janelle A TRAN:EX <Janelle.Staite@gov.bc.ca>
Subject: Re: Winter Conditions - Update

For SA1

180MT of Salt

300MT of Sand

230,000 Litres of Brine

2400 LMD of plowing

Haven't got SA2 yet.

Thanks, Mike

Get Outlook for iOS <<https://aka.ms/o0ukef>>

From: Bhatti, Ashok A TRAN:EX <Ashok.Bhatti@gov.bc.ca>

Sent: Tuesday, December 20, 2022 12:02 PM

To: Farmer, Elena TRAN:EX <Elena.Farmer@gov.bc.ca>; Pearson, Michael TRAN:EX <Michael.Pearson@gov.bc.ca>

Cc: Staite, Janelle A TRAN:EX <Janelle.Staite@gov.bc.ca>

Subject: Re: Winter Conditions - Update

Appreciate your updates. Are we able to get stats on volume of salt/brine/sand we have put down? Estimates completely work. Both vid and LMD

Get Outlook for iOS <<https://aka.ms/o0ukef>>

From: Farmer, Elena TRAN:EX <Elena.Farmer@gov.bc.ca>

Sent: Tuesday, December 20, 2022 11:46:23 AM

To: Bhatti, Ashok A TRAN:EX <Ashok.Bhatti@gov.bc.ca>; Pearson, Michael TRAN:EX <Michael.Pearson@gov.bc.ca>

Cc: Staite, Janelle A TRAN:EX <Janelle.Staite@gov.bc.ca>

Subject: RE: Winter Conditions - Update

Ashok,

For the most part snow has stopped in LMD, with sporadic flurries in Metro Vancouver and the Fraser Valley. MC's continue to work to clear all the major routes.

Highlights:

- Drier low-density snowfall has allowed crews to make progress on clearing accumulation in Metro Vancouver. Starting to get to pavement in some areas.
- Low traffic volumes have allowed echelon plowing to occur on Highway 7 and Highway 1.
- North Vancouver routes (H1/H99) are bare and black throughout.

Challenges:

- Highway 15 NB at 8th Ave to 16th Ave closed due to a jack-knifed semi. CVSE on scene and specialize equipment on routes.
- Queensborough NB 1 lane is getting through. Spun out vehicle with summer tires.
- Blowing snow on Highway 1 in the Valley continues to be a challenge. Seeing commercial vehicles in the ditch.
- Highway 5 between Hope and Othello closed NB due to MVI.

Elena

Elena Farmer (she/her/hers)

District Manager, Transportation

Lower Mainland District | South Coast Region

Ministry of Transportation and Infrastructure

1500 Woolridge Street, Coquitlam, BC V3K 0B8

P: 236-468-1935

E: Elena.Farmer@gov.bc.ca

From: Bhatti, Ashok A TRAN:EX <Ashok.Bhatti@gov.bc.ca>

Sent: December 20, 2022 11:04 AM

To: Pearson, Michael TRAN:EX <Michael.Pearson@gov.bc.ca>; Farmer, Elena TRAN:EX <Elena.Farmer@gov.bc.ca>

Cc: Staite, Janelle A TRAN:EX <Janelle.Staite@gov.bc.ca>

Subject: Winter Conditions - Update

Mike/Elena, can I get a quick update on how we are doing. As we progress into the noon hour, media interested in our progress. Hoping you can share a few highlights if you have any. Also any major challenges still, backups, counterflow, etc.

Next interview at 12:00.

Thank you,

Ashok Bhatti, B.COMM. MBA

Executive Director

South Coast Region

Ministry of Transportation and Infrastructure

PH: +1 (236) 468-1911

Email: Ashok.Bhatti@gov.bc.ca

Visit us at:<http://www.gov.bc.ca/tran>

This e-mail is intended solely for the person or entity to which it is addressed and may contain confidential and privileged information. Any review, dissemination, copying, printing or other use of this e-mail by persons or entities other than the addressee is prohibited. If you have received this e-mail in error, please contact the sender immediately and delete the material from any computer.

Page 324 of 353 to/à Page 353 of 353

Withheld pursuant to/removed as

s.13